

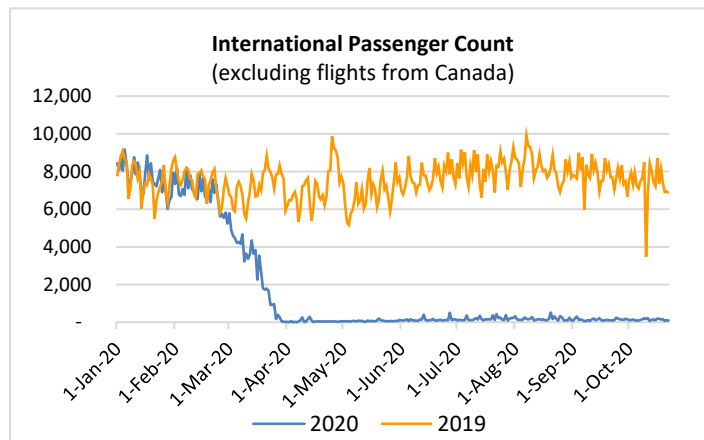
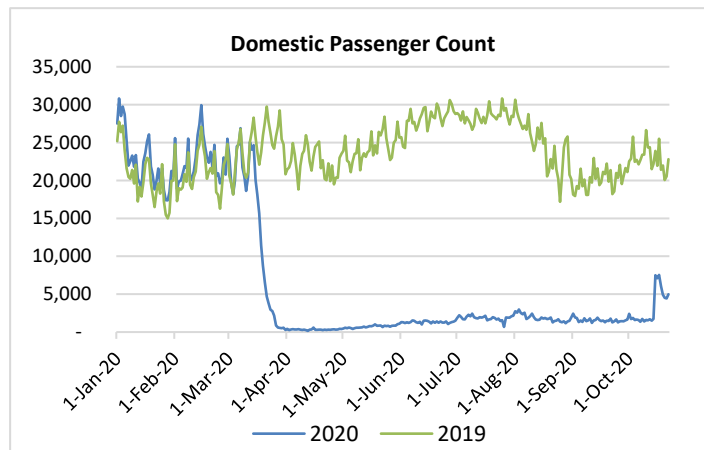
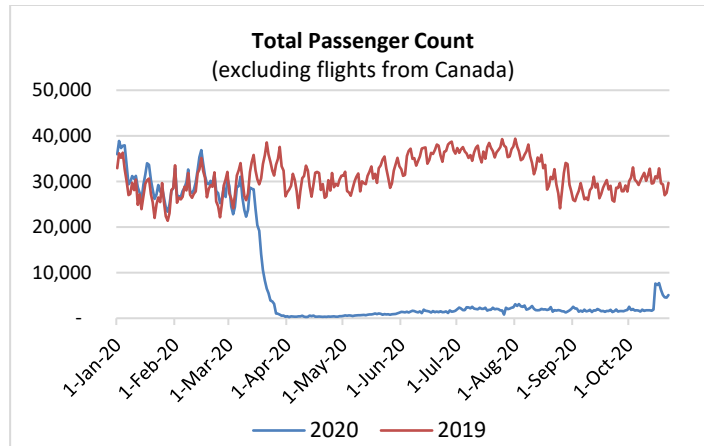
# HTA COVID-19 UPDATE

(Issued: 10/23/20 @ 4:30pm)

Reason for Trip by Arrival Airport - Transpacific Screened Passengers as of 10/22/20	Honolulu (HNL)	Kahului (OGG)	Kona (KOA)	Lihue (LIH)	Grand Total
Airline Crew	323	72	54	31	480
Corporate Meeting	1	4	1	0	6
Essential Worker	105	14	12	4	135
Honeymoon	17	6	8	1	32
Incentive Trip	8	0	0	0	8
Intended Resident	102	23	29	7	161
Military or Federal Government	160	1	1	3	165
Other	98	18	18	6	140
Other Business	149	49	39	13	250
Pleasure/Vacation	1,114	827	319	374	2,634
Returning Resident	543	130	140	41	854
To Attend School	9	0	0	0	9
To Get Married	7	4	0	1	12
Transit	183	1	0	0	184
Visiting Friends or Relatives	834	162	100	71	1,167
<b>Grand Total</b>	<b>3,653</b>	<b>1,311</b>	<b>721</b>	<b>552</b>	<b>6,237</b>

**Source:** Safe Travels program developed by the State of Hawaii Office of Enterprise Technology Services  
**Note:** The data is preliminary and subject to change

Market Impact Update: <https://www.dropbox.com/10/23/20 HTA COVID19 Update>



**Daily Passenger Count Table**

10/22/2020	Domestic	International	Total
Oahu	2852	87	2939
Maui	1019		1019
Island of Hawaii	623		623
Kauai	495		495
State	4989	87	5076

## Novel Coronavirus in Hawaii

### COVID-19 Positive Cases

Cumulative totals as of 12:00 noon on October 23, 2020

<b>Total Cases</b>	<b>14,464 (131 new)</b>
Required Hospitalization	1,057‡
Death	209
Released from Isolation	11,292§
Hawaii County	1,154
Honolulu County	12,734
Kauai County	60
Maui County	464†
Pending	0
Residents diagnosed outside of Hawaii	52

### Footnotes for COVID-19 Cases

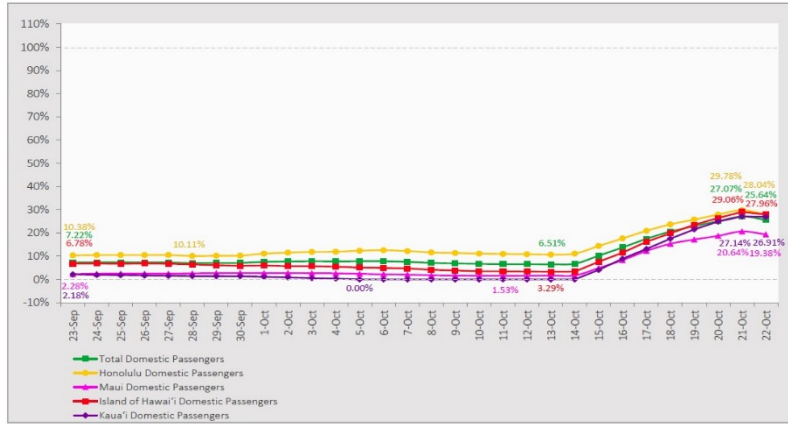
\*As a result of updated information, two cases from Honolulu were removed from the counts.

†One case is a Lanai resident whose exposure is on Maui Island and who will be remaining on Maui Island for the interim.

‡Includes Hawaii residents hospitalized out of state.  
 §Includes cases that meet isolation release criteria (Isolation should be maintained until at least 24 hours after resolution of fever and myalgia without the use of antipyretics OR at least 10 days have passed since symptom onset, whichever is longer). (The cases that have died and one case that has left the jurisdiction have been removed from these counts). Positive cases include confirmed cases, and Hawaii residents and non-residents; data are preliminary and subject to change. Note that CDC provides case counts according to states of residence.

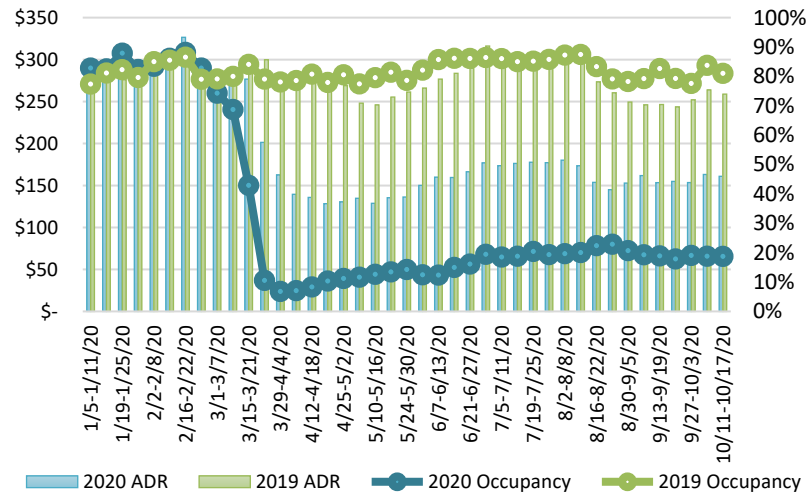
## 7-Day Domestic by Island Moving Average Daily Passenger Volume

2020 Volume as Percentage of 2019 Volume  
Through October 22, 2020



Source: HVCB analysis based on data from DBEDT  
Note: Passenger volume figures include both visitors and residents.

## State of Hawaii Hotel Performance by Week - 2020 vs 2019



Source: STR, Inc. © Copyright 2020 Hawaii Tourism Authority

## Hawaii Hotel Performance Info:

For the week of October 11 – October 17, 2020

	Occupancy	ADR	RevPAR
State of Hawaii	18.7%	\$ 160.95	\$ 30.09
Oahu	20.0%	\$ 157.00	\$ 31.43
Maui County	14.5%	\$ 188.22	\$ 27.33
Kauai County	17.3%	\$ 162.53	\$ 28.17
Island of Hawaii	22.8%	\$ 138.15	\$ 31.44

## Domestic by Island Month-to-Date and Year-to-Date Daily Passenger Volume

2020 Volume versus 2019 Volume  
Through October 22, 2020

October 2020 (Month-to-Date through October 22)

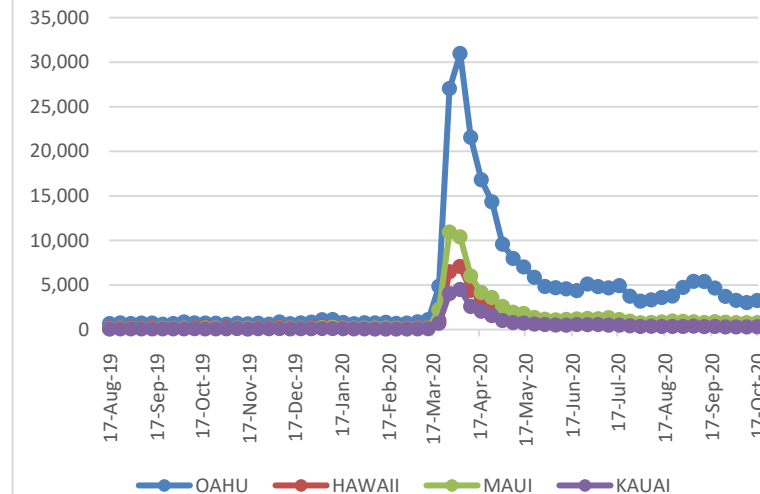
	2020	2019	Volume Change	Percent Change
Honolulu	48,648	272,958	-224,310	-82.2%
Maui County	11,062	134,838	-123,776	-91.8%
Island of Hawai'i	6,380	50,889	-44,509	-87.5%
Kaua'i	4,383	45,913	-41,530	-90.5%
Total	70,473	504,598	-434,125	-86.0%

2020 (Year-to-Date through October 22)

	2020	2019	Volume Change	Percent Change
Honolulu	1,212,926	3,752,208	-2,539,282	-67.7%
Maui County	468,742	1,828,908	-1,360,166	-74.4%
Island of Hawai'i	235,943	804,023	-568,080	-70.7%
Kaua'i	156,447	625,374	-468,927	-75.0%
Total	2,074,058	7,010,513	-4,936,456	-70.4%

Source: HVCB analysis based on data from DBEDT  
Note: Passenger volume figures include both visitors and residents. Total includes other international passengers. 2020 includes one additional day due to Leap Year (February 29th, 2020).

## 2020 Initial Weekly Unemployment Claims by Island



## Weekly Unemployment Initial Claims: October 17, 2020

State of Hawaii	5,119
C&C of Oahu	3,247
Hawaii County	705
Maui County	750
Kauai County	295
Agent (filed in Hawaii against another state)	122

## News Highlights

October 23, 2020

**Hawaii News Now:** [Hospitals on Maui, Oahu on alert as COVID-19 outbreak on Lanai grows](#)

**Hawaii News Now:** [Hotels help police enforce quarantine for travelers who land without a negative test](#)

**Honolulu Star Advertiser:** [Backlog in the state's manual COVID-19 test verification process sends thousands of Hawaii travelers to quarantine](#)

**Honolulu Star Advertiser:** [Community activist Larry Geller advocates for the vulnerable struggling with the coronavirus pandemic](#)

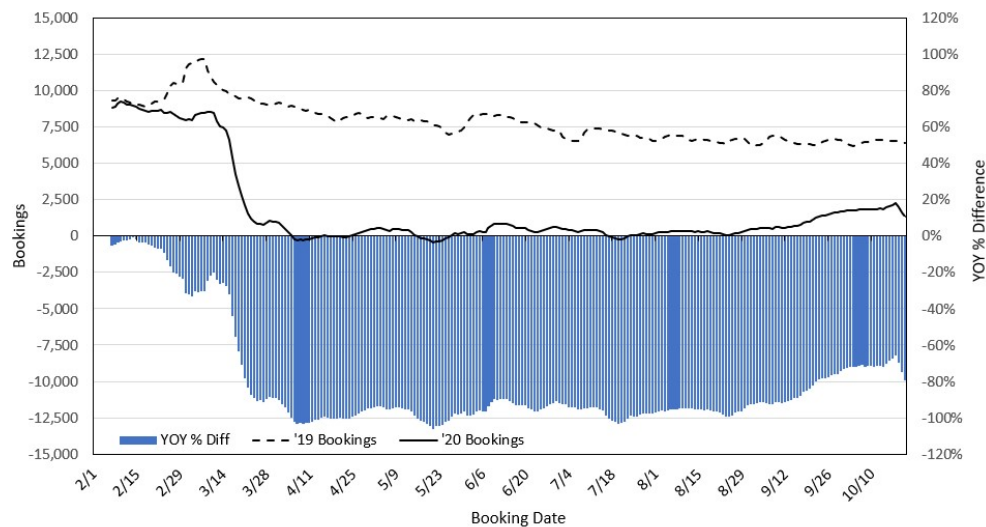
**Honolulu Star Advertiser:** [Lanai residents told to shelter in place as coronavirus cases grow on rural island](#)

**KITV4:** [Hilton Hawaiian Village to permanently lay off more than 50 employees](#)

**Honolulu Civil Beat:** [Here's How Hawaii Is Planning For A Future COVID-19 Vaccine](#)

**Hawaii Tribune-Herald:** [Most new Big Island cases are people younger than 40](#)

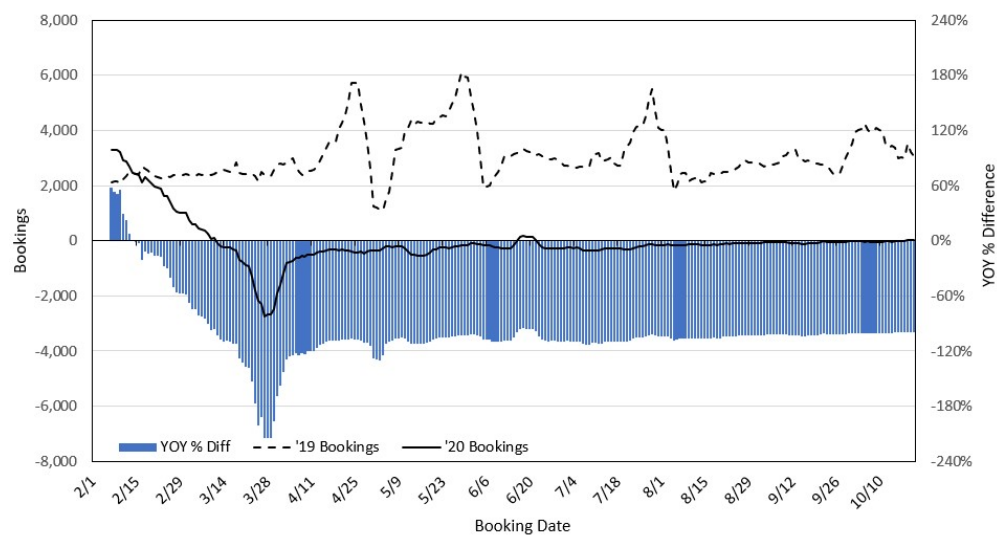
### Travel Agency Bookings to Hawaii for Future Arrivals\* Based on a 7-day Moving Average, 2020 vs 2019 U.S.



\*Future Arrivals refers to all arrivals that are 'future' relative to the referenced booking date.  
Source: Global Agency Pro

Update: Oct 21, 2020

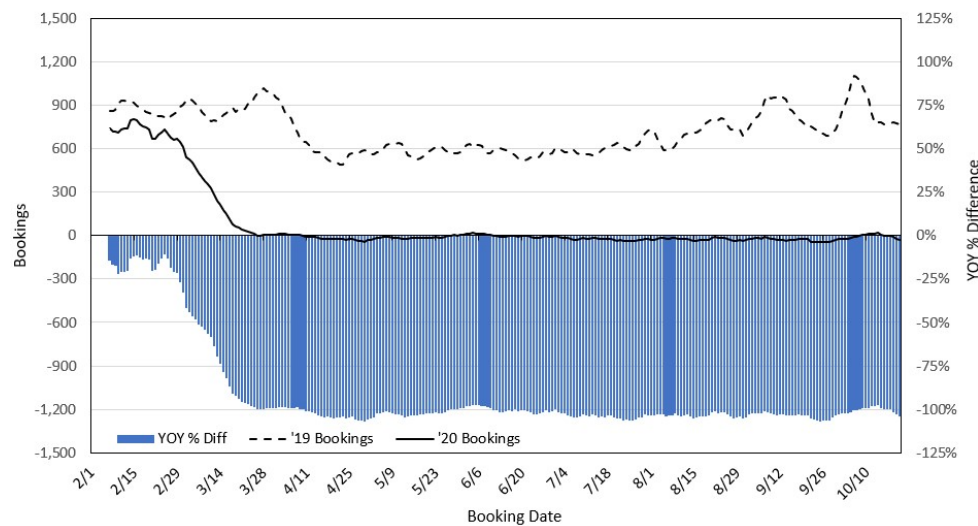
### Travel Agency Bookings to Hawaii for Future Arrivals\* Based on a 7-day Moving Average, 2020 vs 2019 Japan



\*Future Arrivals refers to all arrivals that are 'future' relative to the referenced booking date.  
Source: Global Agency Pro

Update: Oct 21, 2020

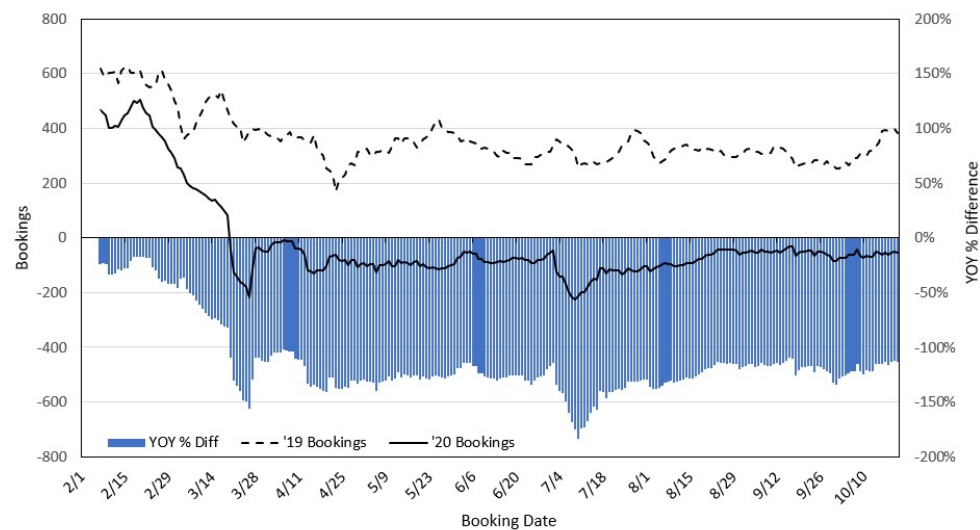
### Travel Agency Bookings to Hawaii for Future Arrivals\* Based on a 7-day Moving Average, 2020 vs 2019 Canada



\*Future Arrivals refers to all arrivals that are 'future' relative to the referenced booking date.  
Source: Global Agency Pro

Update: Oct 21, 2020

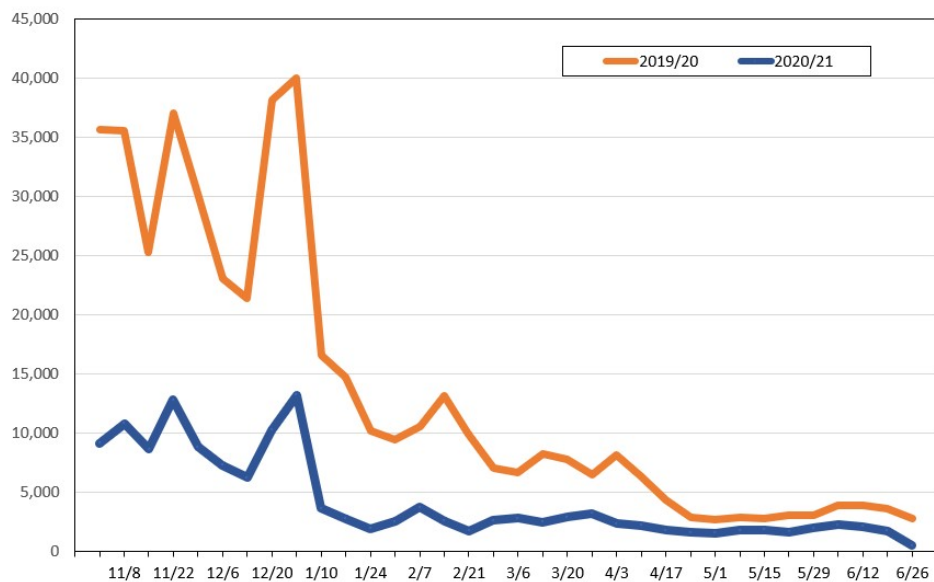
### Travel Agency Bookings to Hawaii for Future Arrivals\* Based on a 7-day Moving Average, 2020 vs 2019 Australia



\*Future Arrivals refers to all arrivals that are 'future' relative to the referenced booking date.  
Source: Global Agency Pro

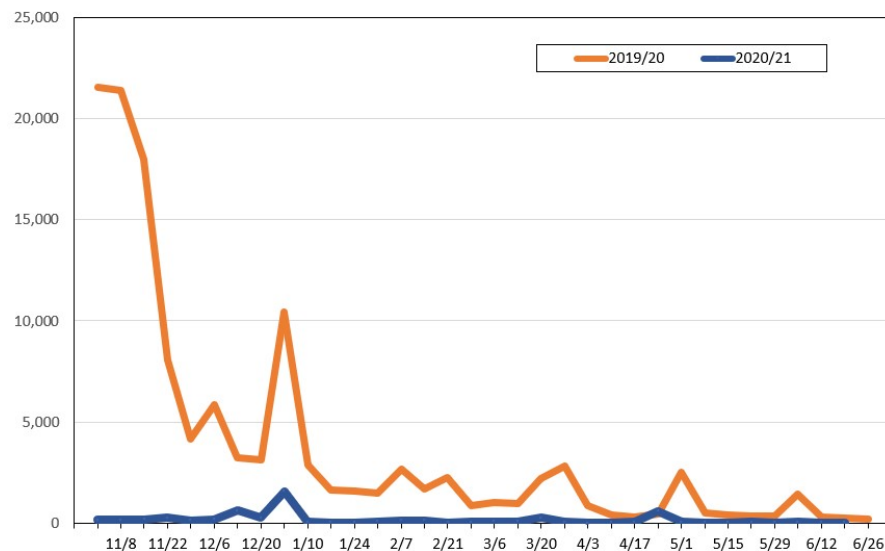
Update: Oct 21, 2020

**Travel Agency Weekly Bookings for Future Travel to Hawai'i as of October 21, 2020**  
**U.S.**



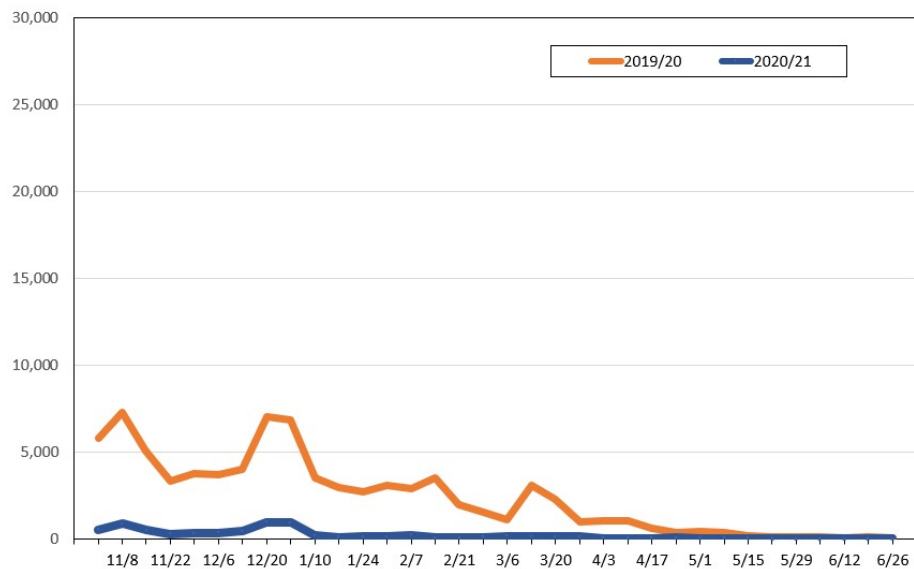
Source: Global Agency Pro, as of October 21, 2020

**Travel Agency Weekly Bookings for Future Travel to Hawai'i as of October 21, 2020**  
**Japan**



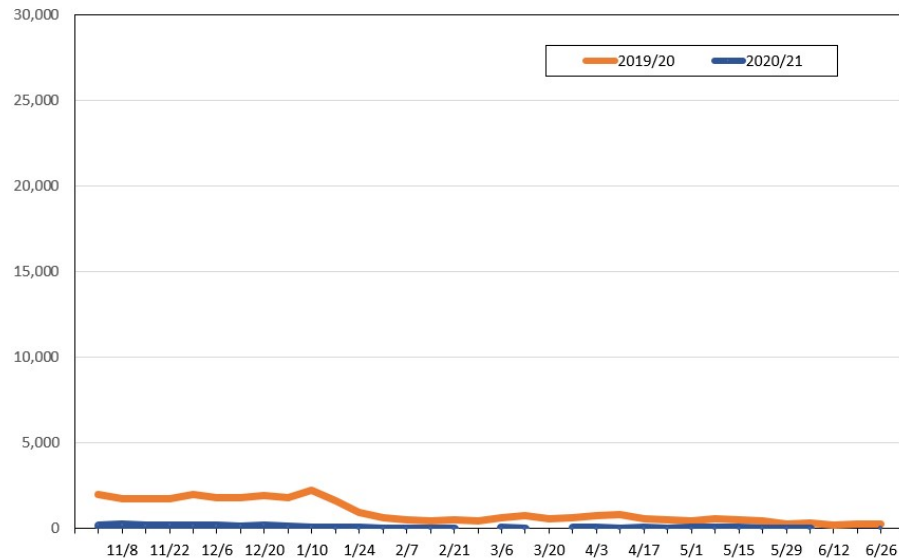
Source: Global Agency Pro, as of October 21, 2020

**Travel Agency Weekly Bookings for Future Travel to Hawai'i as of October 21, 2020**  
**Canada**



Source: Global Agency Pro, as of October 21, 2020

**Travel Agency Weekly Bookings for Future Travel to Hawai'i as of October 21, 2020**  
**Australia**



Source: Global Agency Pro, as of October 21, 2020