

HTA COVID-19 UPDATE

(Issued: 10/26/20 @ 4:00pm)

Reason for Trip by Arrival Airport - Transpacific Screened Passengers as of 10/25/20	Honolulu (HNL)	Kahului (OGG)	Kona (KOA)	Lihue (LIH)	Grand Total
Airline Crew	260	63	56	37	416
Corporate Meeting	0	2	1	0	3
Essential Worker	112	16	17	10	155
Honeymoon	12	16	5	5	38
Intended Resident	77	27	21	4	129
Military or Federal Government	155	4	1	1	161
Other	27	3	4	11	45
Other Business	122	39	25	21	207
Pleasure/Vacation	663	620	200	277	1,760
Returning Resident	743	109	141	39	1,032
Sports Event	1	0	0	0	1
To Attend School	11	0	0	0	11
To Get Married	2	0	0	2	4
Transit	145	2	1	1	149
Visiting Friends or Relatives	438	86	67	50	641
Grand Total	2,768	987	539	458	4,752

Source: Safe Travels program developed by the State of Hawaii Office of Enterprise Technology Services
Note: The data is preliminary and subject to change

Market Impact Update: <https://www.dropbox.com/10/26/20 HTA COVID19 Update>

Novel Coronavirus in Hawaii

COVID-19 Positive Cases

Cumulative totals as of 12:00 noon on October 26, 2020

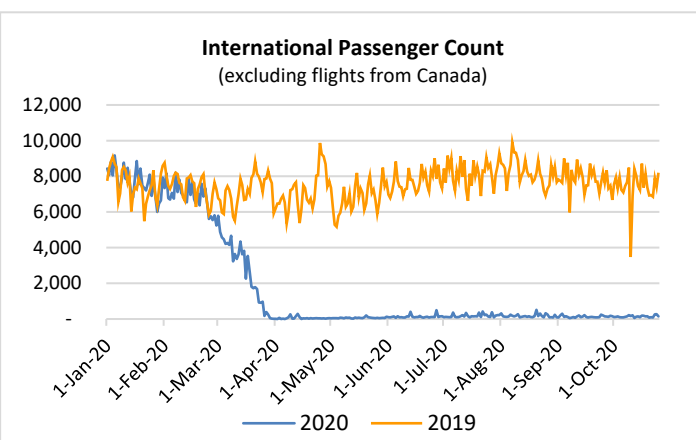
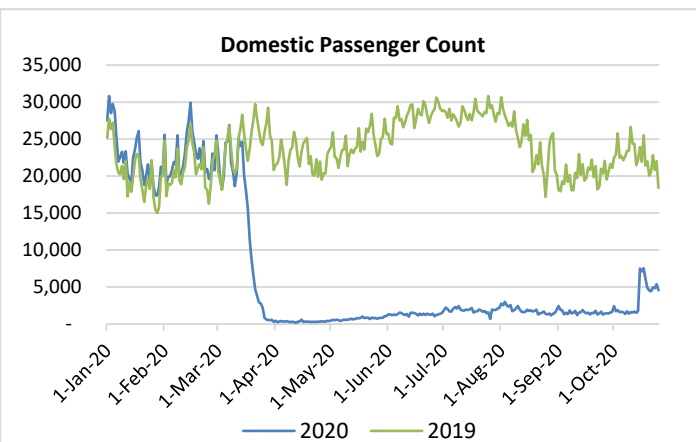
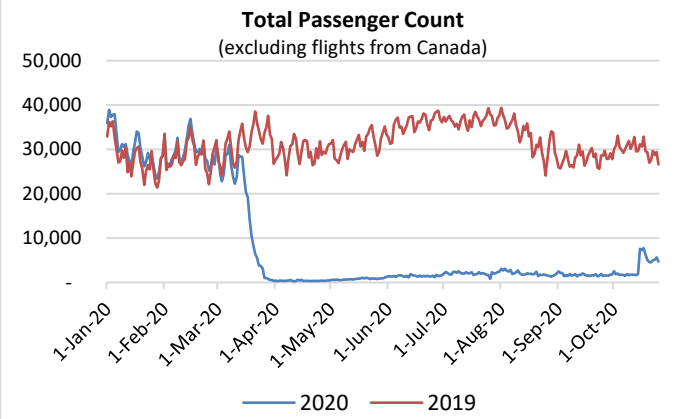
Total Cases	14,709 (38 new)
Hawaii	1,230
Kauai	62
Lanai	79
Maui	401†
Molokai	17
Oahu	12,864
Pending	0
Residents diagnosed outside of Hawaii	56
Required Hospitalization	1,067‡
Hawaii Deaths	212
Released from Isolation	11,444§

Footnotes for COVID-19 Cases

*As a result of updated information, one case from Oahu was removed from the counts.

†One case is a Lanai resident whose exposure is on Maui Island and who will be remaining on Maui Island for the interim.

‡Includes Hawaii residents hospitalized out of state.
 §Includes cases that meet isolation release criteria (Isolation should be maintained until at least 24 hours after resolution of fever and myalgia without the use of antipyretics OR at least 10 days have passed since symptom onset, whichever is longer). (The cases that have died and one case that has left the jurisdiction have been removed from these counts). Positive cases include confirmed cases, and Hawaii residents and non-residents; data are preliminary and subject to change. Note that CDC provides case counts according to states of residence.

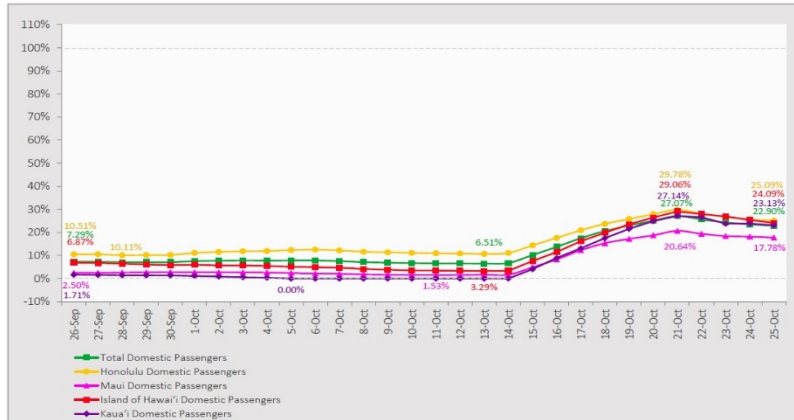


Daily Passenger Count Table

10/25/2020	Domestic	International	Total
Oahu	2855	144	2999
Maui	876		876
Island of Hawaii	415		415
Kauai	402		402
State	4548	144	4692

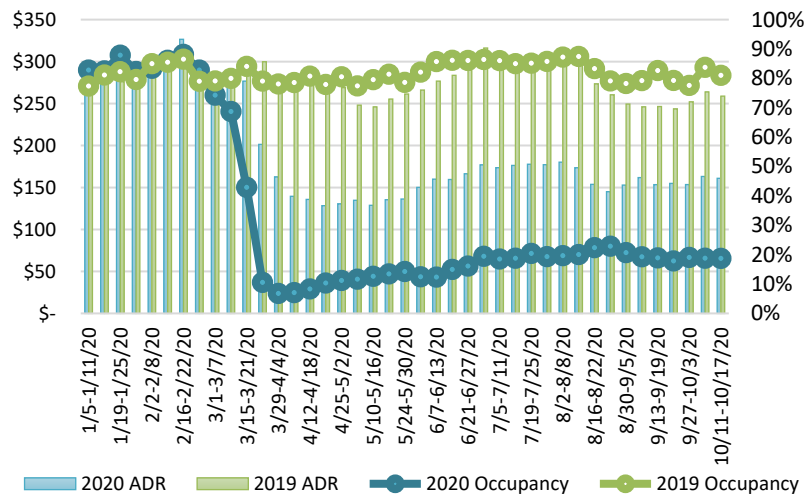
7-Day Domestic by Island Moving Average Daily Passenger Volume

2020 Volume as Percentage of 2019 Volume
Through October 25, 2020



Source: HVCB analysis based on data from DBEDT
Note: Passenger volume figures include both visitors and residents.

State of Hawaii Hotel Performance by Week - 2020 vs 2019



Source: STR, Inc. © Copyright 2020 Hawaii's Tourism Authority

Hawaii Hotel Performance Info:

For the week of October 11 – October 17, 2020

	Occupancy	ADR	RevPAR
State of Hawaii	18.7%	\$ 160.95	\$ 30.09
Oahu	20.0%	\$ 157.00	\$ 31.43
Maui County	14.5%	\$ 188.22	\$ 27.33
Kauai County	17.3%	\$ 162.53	\$ 28.17
Island of Hawaii	22.8%	\$ 138.15	\$ 31.44

Domestic by Island Month-to-Date and Year-to-Date Daily Passenger Volume

2020 Volume versus 2019 Volume
Through October 25, 2020

October 2020 (Month-to-Date through October 25)

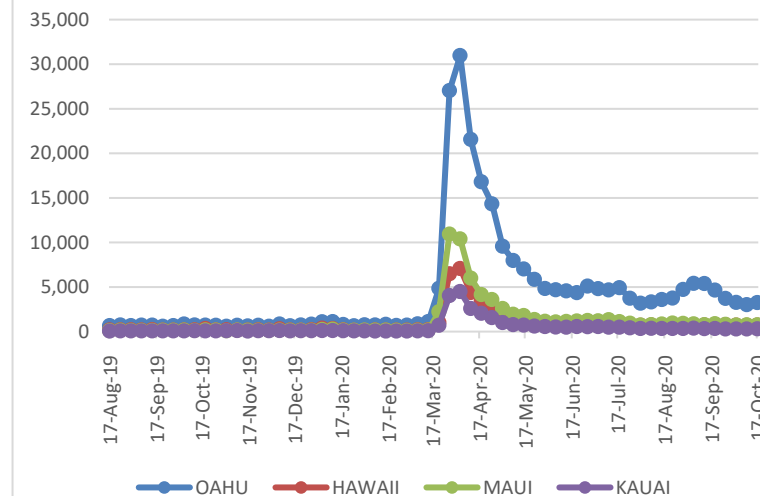
	2020	2019	Volume Change	Percent Change
Honolulu	57,210	307,971	-250,761	-81.4%
Maui County	14,472	151,926	-137,454	-90.5%
Island of Hawai'i	7,886	57,324	-49,438	-86.2%
Kaua'i	5,625	51,564	-45,939	-89.1%
Total	85,193	568,785	-483,592	-85.0%

2020 (Year-to-Date through October 25)

	2020	2019	Volume Change	Percent Change
Honolulu	1,221,488	3,787,221	-2,565,733	-67.7%
Maui County	472,152	1,845,996	-1,373,844	-74.4%
Island of Hawai'i	237,449	810,458	-573,009	-70.7%
Kaua'i	157,689	631,025	-473,336	-75.0%
Total	2,088,777	7,074,700	-4,985,923	-70.5%

Source: HVCB analysis based on data from DBEDT
Note: Passenger volume figures include both visitors and residents. Total includes other international passengers. 2020 includes one additional day due to Leap Year (February 29th, 2020).

2020 Initial Weekly Unemployment Claims by Island



Weekly Unemployment Initial Claims: October 17, 2020

State of Hawaii	5,119
C&C of Oahu	3,247
Hawaii County	705
Maui County	750
Kauai County	295
Agent (filed in Hawaii against another state)	122

News Highlights

October 26, 2020

KHON2: [HTA doubling up its efforts to educate travelers about Hawaii's COVID-19 rules](#)

KHON2: [Hawaii Island sees spike in cases, Lanai prepares for stay-at-home order](#)

Honolulu Civil Beat: [Wrong Tests, Weird Exemptions – What The Data Tells Us About Hawaii's Reopening](#)

The Garden Island: [Resident tests positive](#)

Hawaii Herald-Tribune: [Lt. Gov. Green calls for stronger, uniform rules as virus surges](#)

Hawaii Herald-Tribune: [Tens of thousands arrive in Hawaii with pre-travel testing](#)

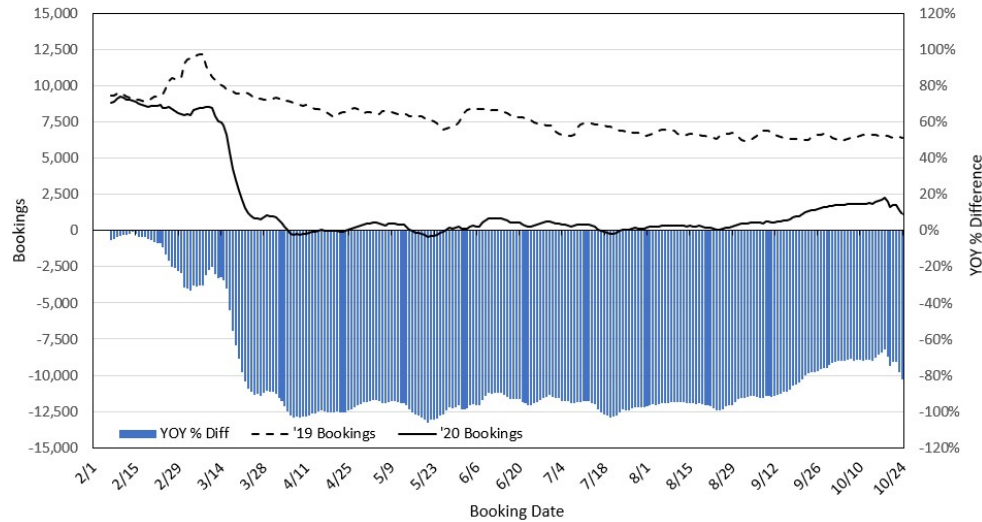
The Maui News: [Vehicle demonstration at airport for enhanced COVID-19 measures](#)

Los Angeles Times: [Is Hawaii ready for visitors? Scenes from one reopened island](#)

SF Gate: [Until tourists return, here's what Hawaii restaurants are doing to survive](#)

TTG Asia: [Hawaii plans to reopen to Japanese tourists by year-end](#)

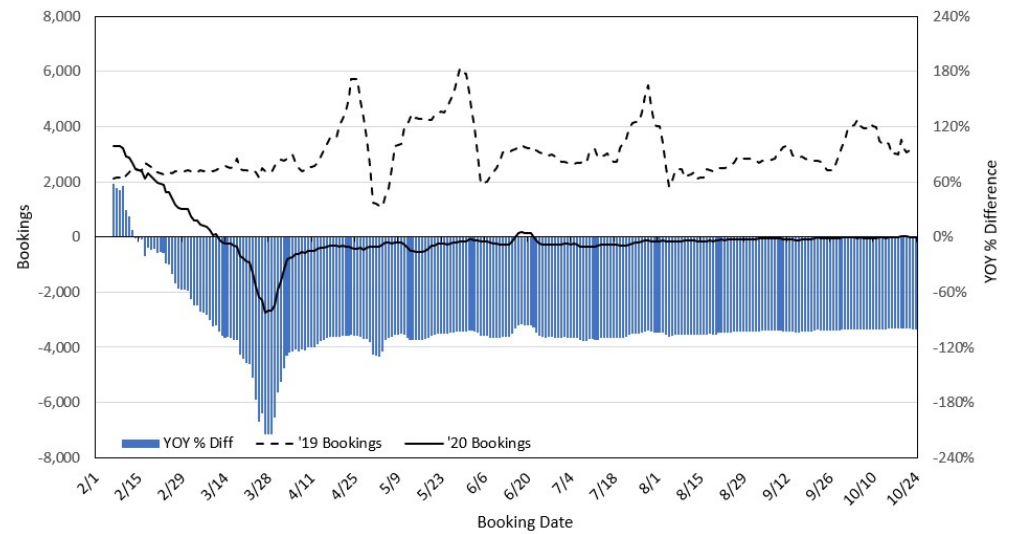
Travel Agency Bookings to Hawaii for Future Arrivals* Based on a 7-day Moving Average, 2020 vs 2019 U.S.



*Future Arrivals refers to all arrivals that are 'future' relative to the referenced booking date.
Source: Global Agency Pro

Update: Oct 24, 2020

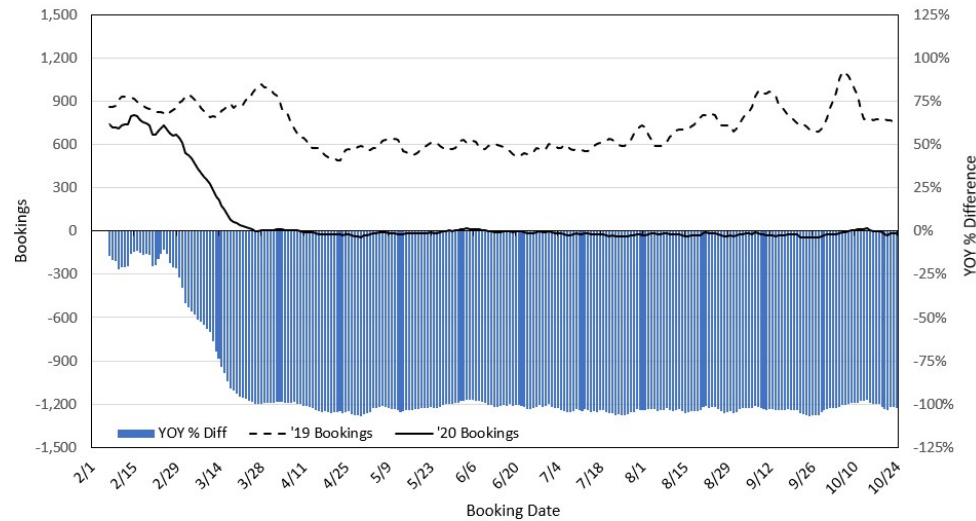
Travel Agency Bookings to Hawaii for Future Arrivals* Based on a 7-day Moving Average, 2020 vs 2019 Japan



*Future Arrivals refers to all arrivals that are 'future' relative to the referenced booking date.
Source: Global Agency Pro

Update: Oct 24, 2020

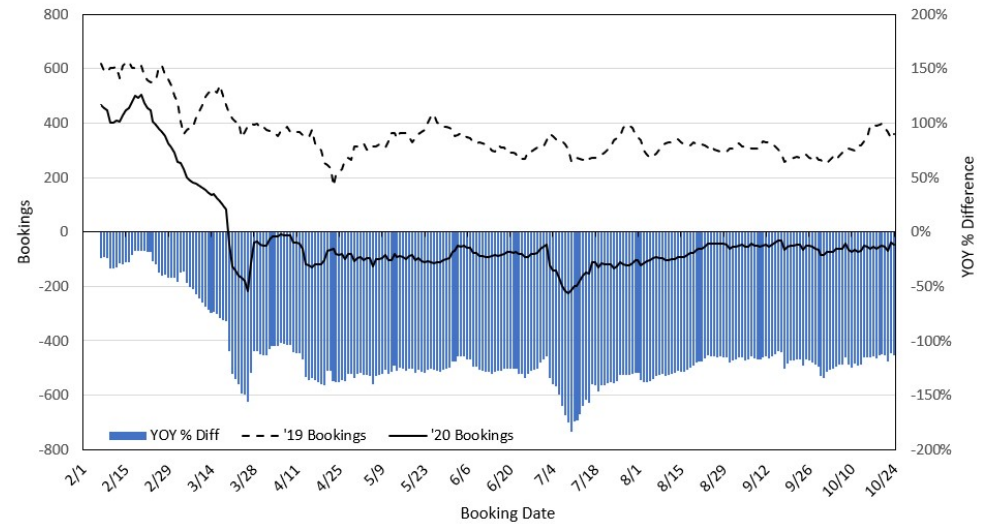
Travel Agency Bookings to Hawaii for Future Arrivals* Based on a 7-day Moving Average, 2020 vs 2019 Canada



*Future Arrivals refers to all arrivals that are 'future' relative to the referenced booking date.
Source: Global Agency Pro

Update: Oct 24, 2020

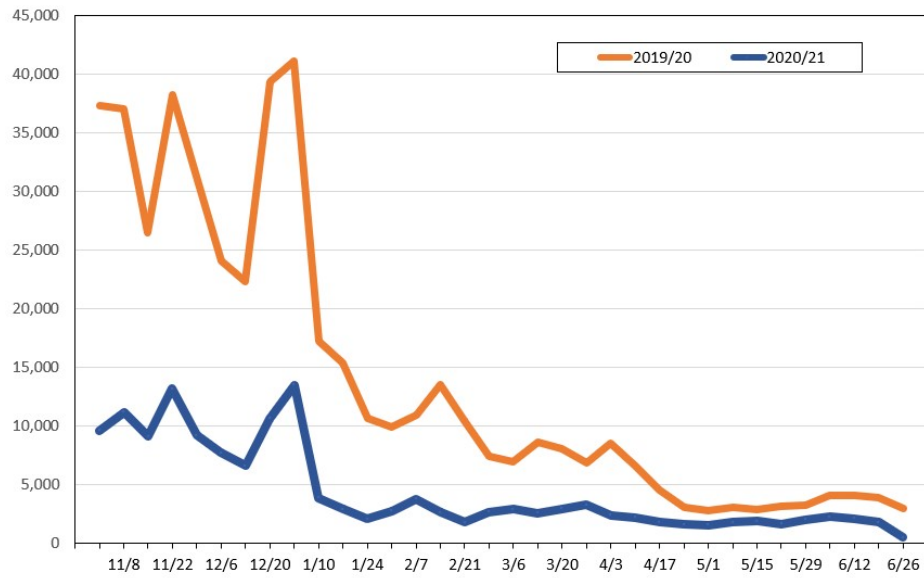
Travel Agency Bookings to Hawaii for Future Arrivals* Based on a 7-day Moving Average, 2020 vs 2019 Australia



*Future Arrivals refers to all arrivals that are 'future' relative to the referenced booking date.
Source: Global Agency Pro

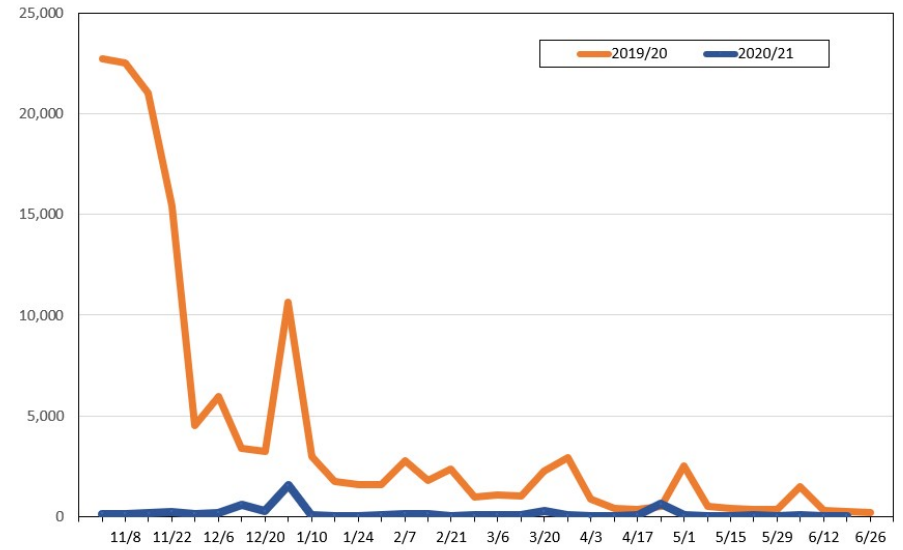
Update: Oct 24, 2020

Travel Agency Weekly Bookings for Future Travel to Hawai'i as of October 24, 2020
U.S.



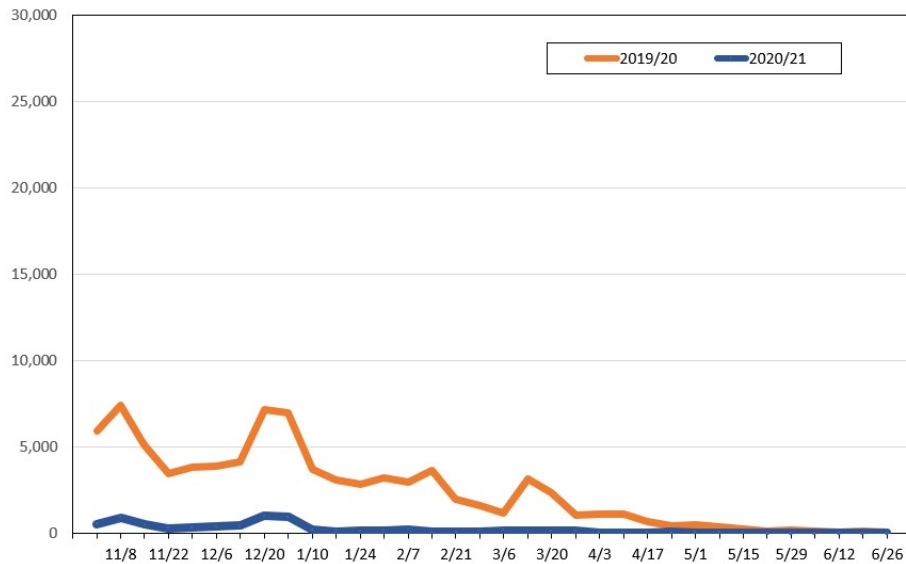
Source: Global Agency Pro, as of October 24, 2020

Travel Agency Weekly Bookings for Future Travel to Hawai'i as of October 24, 2020
Japan



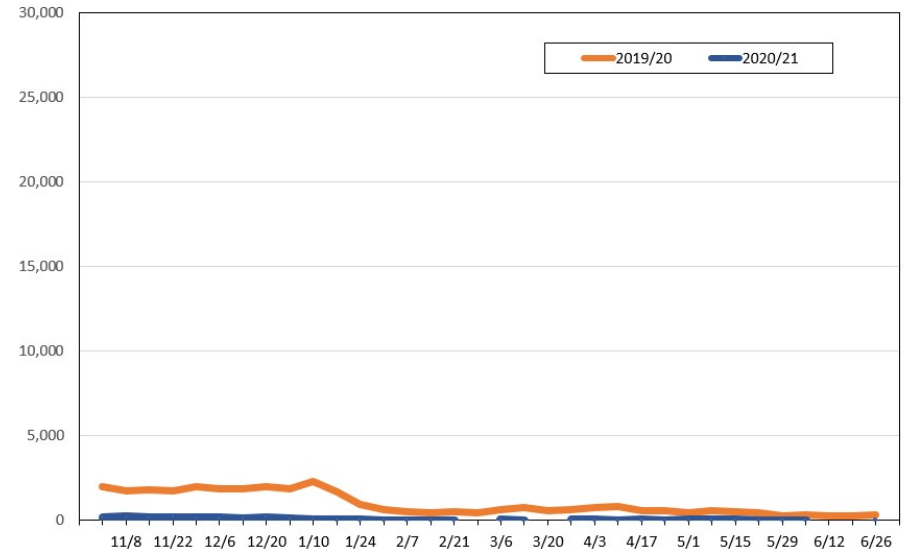
Source: Global Agency Pro, as of October 24, 2020

Travel Agency Weekly Bookings for Future Travel to Hawai'i as of October 24, 2020
Canada



Source: Global Agency Pro, as of October 24, 2020

Travel Agency Weekly Bookings for Future Travel to Hawai'i as of October 24, 2020
Australia



Source: Global Agency Pro, as of October 24, 2020