

HTA COVID-19 UPDATE

(Issued: 10/27/20 @ 4:00pm)

Reason for Trip by Arrival Airport - Transpacific Screened Passengers as of 10/26/20	Honolulu (HNL)	Kahului (OGG)	Kona (KOA)	Lihue (LIH)	Grand Total
Airline Crew	267	66	40	32	405
Corporate Meeting	2	0	1	0	3
Essential Worker	139	28	12	9	188
Honeymoon	17	9	0	9	35
Incentive Trip	3	1	0	0	4
Intended Resident	79	32	22	12	145
Military or Federal Government	125	1	0	2	128
Other	73	17	12	5	107
Other Business	118	40	30	11	199
Pleasure/Vacation	532	467	130	193	1,322
Returning Resident	860	168	133	50	1,211
To Attend School	11	0	0	0	11
To Get Married	0	0	1	2	3
Transit	325	1	0	0	326
Visiting Friends or Relatives	465	114	50	32	661
Grand Total	3,016	944	431	357	4,748

Source: Safe Travels program developed by the State of Hawaii Office of Enterprise Technology Services
Note: The data is preliminary and subject to change

Market Impact Update: <https://www.dropbox.com/10/27/20 HTA COVID19 Update>

Novel Coronavirus in Hawaii

COVID-19 Positive Cases

Cumulative totals as of 12:00 noon on October 27, 2020

Total Cases	14,773 (66 new)
Hawaii	1,233
Kauai	62
Lanai	87
Maui	403†
Molokai	17
Oahu	12,913
Pending	0
Residents diagnosed outside of Hawaii	58
Required Hospitalization	1,073‡
Hawaii Deaths	215
Released from Isolation	11,523§

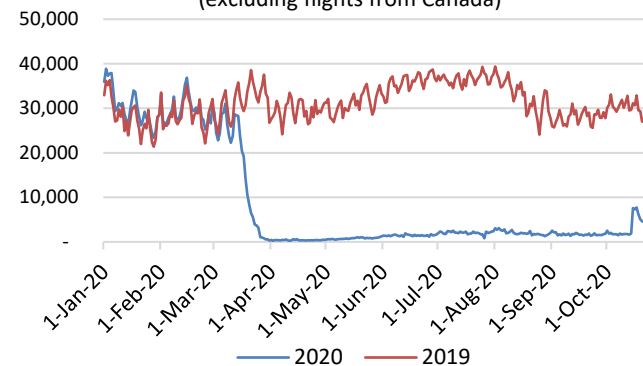
Footnotes for COVID-19 Cases

*As a result of updated information, one case from Oahu was removed from the counts.

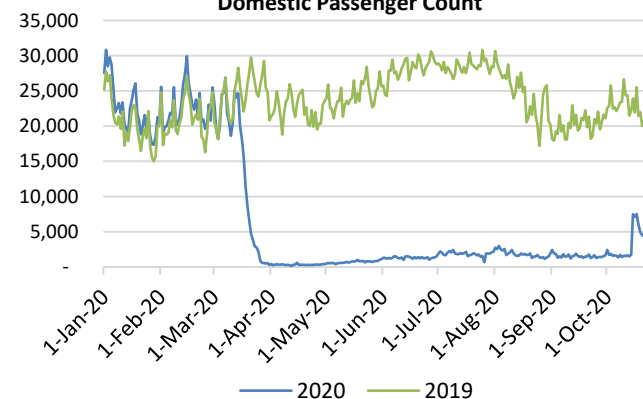
†One case is a Lanai resident whose exposure is on Maui Island and who will be remaining on Maui Island for the interim.

‡Includes Hawaii residents hospitalized out of state.
 §Includes cases that meet isolation release criteria (Isolation should be maintained until at least 24 hours after resolution of fever and myalgia without the use of antipyretics OR at least 10 days have passed since symptom onset, whichever is longer). (The cases that have died and one case that has left the jurisdiction have been removed from these counts). Positive cases include confirmed cases, and Hawaii residents and non-residents; data are preliminary and subject to change. Note that CDC provides case counts according to states of residence.

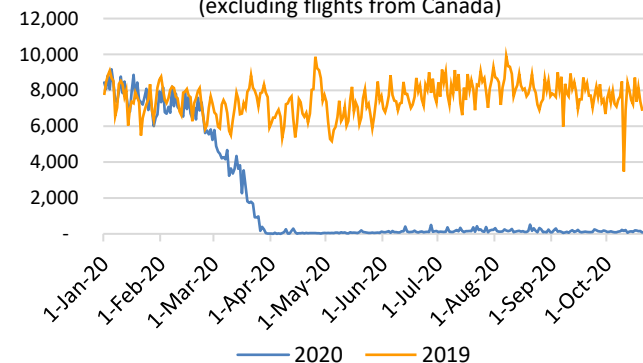
Total Passenger Count
(excluding flights from Canada)



Domestic Passenger Count



International Passenger Count
(excluding flights from Canada)

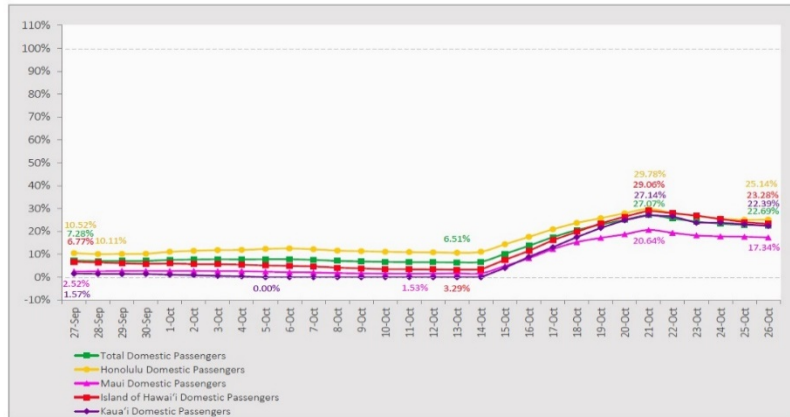


Daily Passenger Count Table

10/26/2020	Domestic	International	Total
Oahu	2856	332	3188
Maui	469		469
Island of Hawaii	370		370
Kauai	350		350
State	4045	332	4377

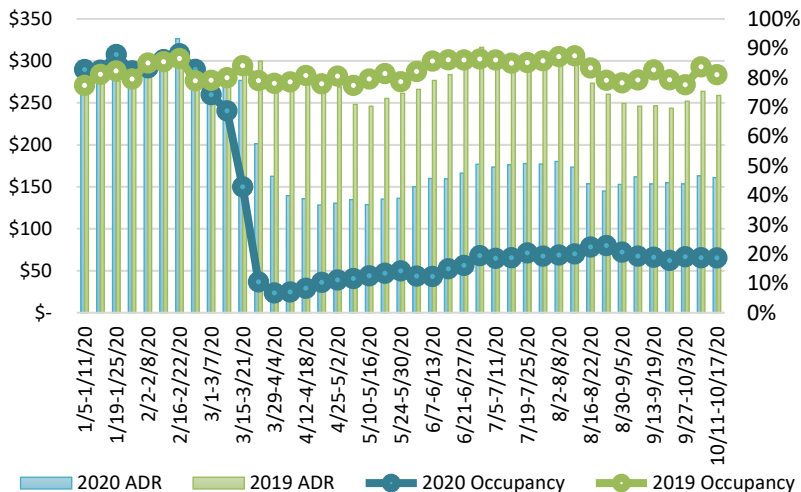
7-Day Domestic by Island Moving Average Daily Passenger Volume

2020 Volume as Percentage of 2019 Volume
Through October 26, 2020



Source: HVCB analysis based on data from DBEDT
Note: Passenger volume figures include both visitors and residents.

State of Hawaii Hotel Performance by Week - 2020 vs 2019



Source: STR, Inc. © Copyright 2020 Hawaii Tourism Authority

Hawaii Hotel Performance Info:

For the week of October 11 – October 17, 2020

	Occupancy	ADR	RevPAR
State of Hawaii	18.7%	\$ 160.95	\$ 30.09
Oahu	20.0%	\$ 157.00	\$ 31.43
Maui County	14.5%	\$ 188.22	\$ 27.33
Kauai County	17.3%	\$ 162.53	\$ 28.17
Island of Hawaii	22.8%	\$ 138.15	\$ 31.44

Domestic by Island Month-to-Date and Year-to-Date Daily Passenger Volume

2020 Volume versus 2019 Volume
Through October 26, 2020

October 2020 (Month-to-Date through October 26)

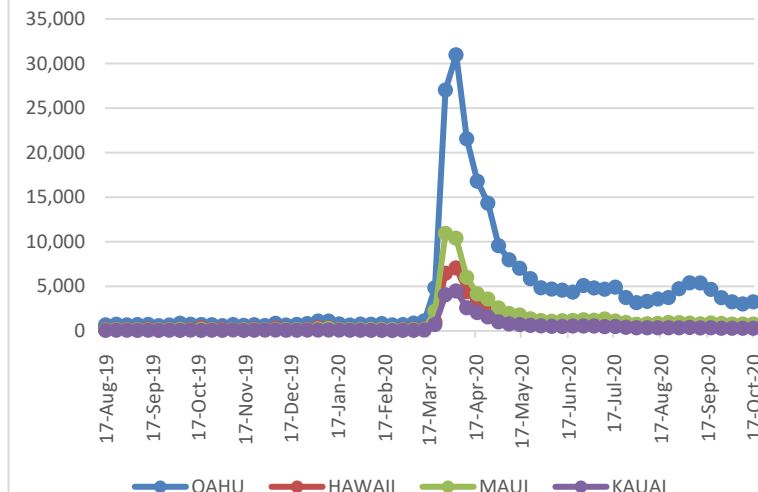
	2020	2019	Volume Change	Percent Change
Honolulu	60,066	319,309	-259,243	-81.2%
Maui County	14,906	157,909	-143,003	-90.6%
Island of Hawai'i	8,256	59,803	-51,547	-86.2%
Kaua'i	5,974	53,783	-47,809	-88.9%
Total	89,202	590,804	-501,602	-84.9%

2020 (Year-to-Date through October 26)

	2020	2019	Volume Change	Percent Change
Honolulu	1,224,344	3,798,559	-2,574,215	-67.8%
Maui County	472,586	1,851,979	-1,379,393	-74.5%
Island of Hawai'i	237,819	812,937	-575,118	-70.7%
Kaua'i	158,038	633,244	-475,206	-75.0%
Total	2,092,787	7,096,719	-5,003,932	-70.5%

Source: HVCB analysis based on data from DBEDT
Note: Passenger volume figures include both visitors and residents. Total includes other international passengers. 2020 includes one additional day due to Leap Year (February 29th, 2020).

2020 Initial Weekly Unemployment Claims by Island



Weekly Unemployment Initial Claims: October 17, 2020

State of Hawaii	5,119
C&C of Oahu	3,247
Hawaii County	705
Maui County	750
Kauai County	295
Agent (filed in Hawaii against another state)	122

News Highlights

October 27, 2020

Honolulu Star Advertiser:

[Confusion about rules on mask wearing is widespread across counties for residents and tourists](#)

KHON2: [Halloween gatherings in Waikiki are discouraged](#)

Honolulu Civil Beat: [COVID-19 Restrictions Vary Wildly Depending On Where You Live](#)

Honolulu Civil Beat: [Anatomy Of An Outbreak: Once Unleashed, The Coronavirus Moved Swiftly On Lanai](#)

Honolulu Public Radio: [The Latest: Lanai Test Results Should Show Extent Of Spread As Stay-At-Home Order Takes Effect](#)

West Hawaii Today: [Japanese travel plan nearly set](#)

Big Island Now: [Hawaii Health Systems Supported by Out-of-State Workers Through Christmas](#)

Travel Pulse: [CDC Updates Recommendation to Defer All Cruise Travel](#)

SF Gate: [United drops its shortest route, Hawaii opens and adds new flights, holiday travel bargains ahead](#)

Helpful Resources

Department of Health
<https://hawaiiicovid19.com/>

Department of Health

<https://health.hawaii.gov/docd/advisories/novel-coronavirus-2019>

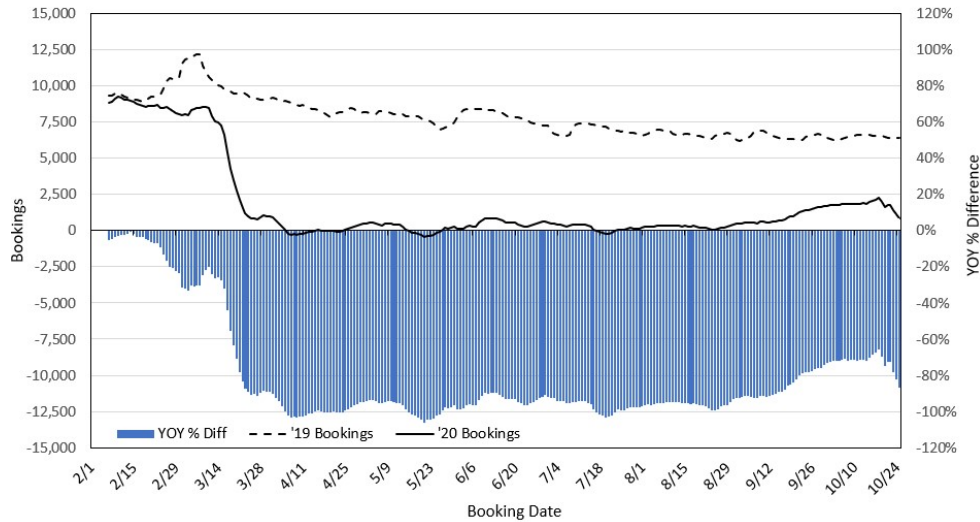
Dept. of Business, Economic Development & Tourism

<https://dbedt.hawaii.gov/economic/covid19/>

Department of Transportation

<https://hidot.hawaii.gov/coronavirus/>

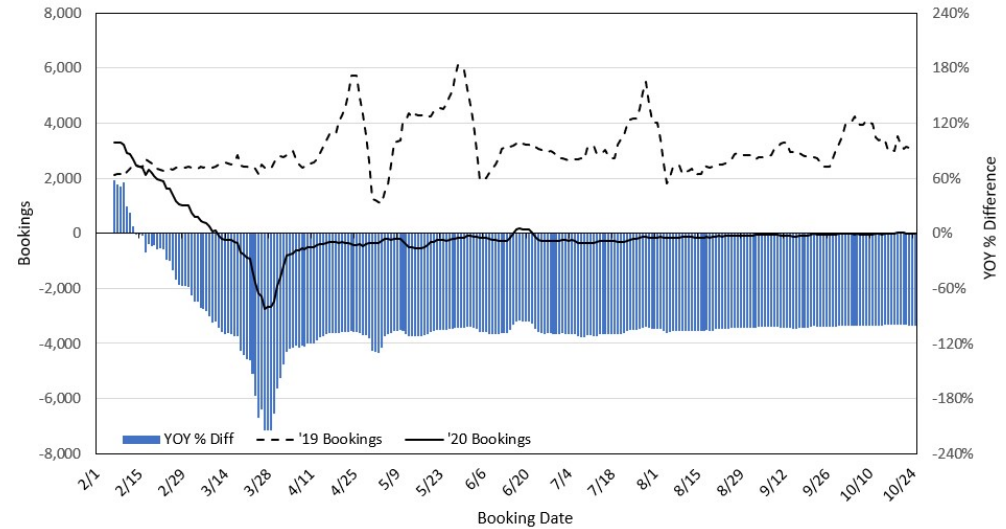
Travel Agency Bookings to Hawaii for Future Arrivals* Based on a 7-day Moving Average, 2020 vs 2019 U.S.



*Future Arrivals refers to all arrivals that are 'future' relative to the referenced booking date.
Source: Global Agency Pro

Update: Oct 25, 2020

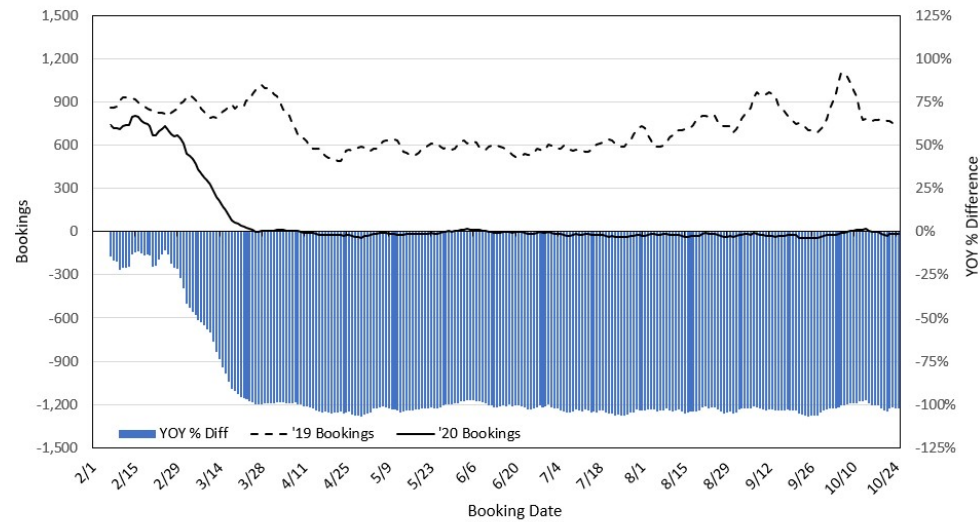
Travel Agency Bookings to Hawaii for Future Arrivals* Based on a 7-day Moving Average, 2020 vs 2019 Japan



*Future Arrivals refers to all arrivals that are 'future' relative to the referenced booking date.
Source: Global Agency Pro

Update: Oct 25, 2020

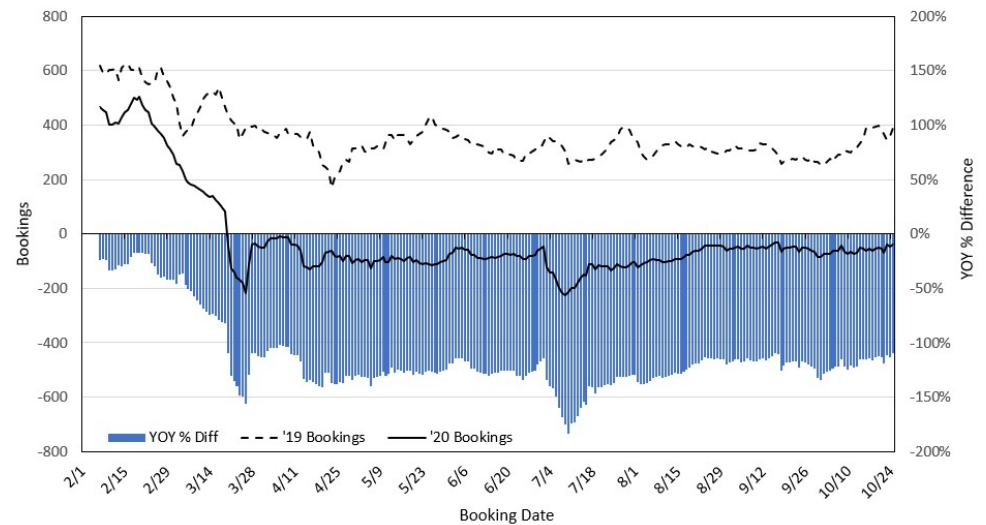
Travel Agency Bookings to Hawaii for Future Arrivals* Based on a 7-day Moving Average, 2020 vs 2019 Canada



*Future Arrivals refers to all arrivals that are 'future' relative to the referenced booking date.
Source: Global Agency Pro

Update: Oct 25, 2020

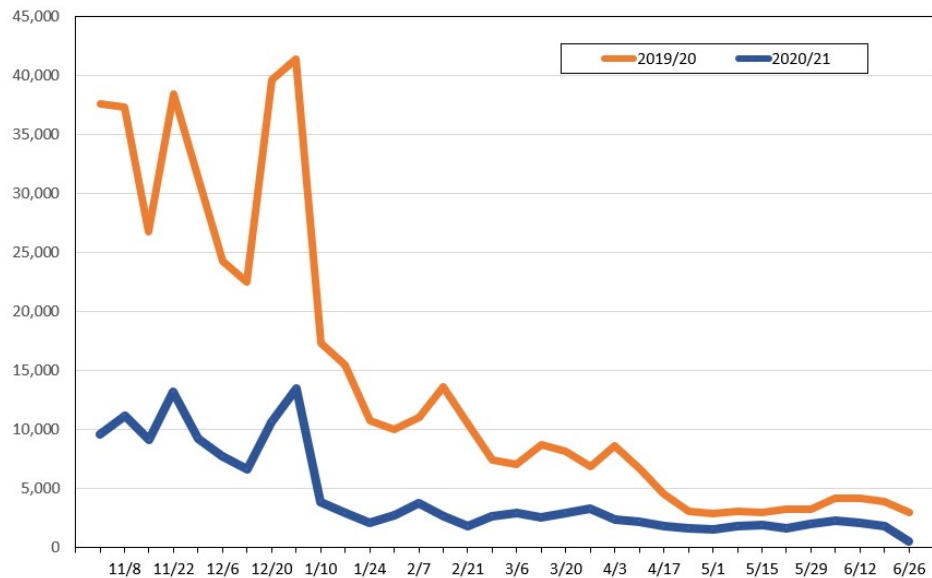
Travel Agency Bookings to Hawaii for Future Arrivals* Based on a 7-day Moving Average, 2020 vs 2019 Australia



*Future Arrivals refers to all arrivals that are 'future' relative to the referenced booking date.
Source: Global Agency Pro

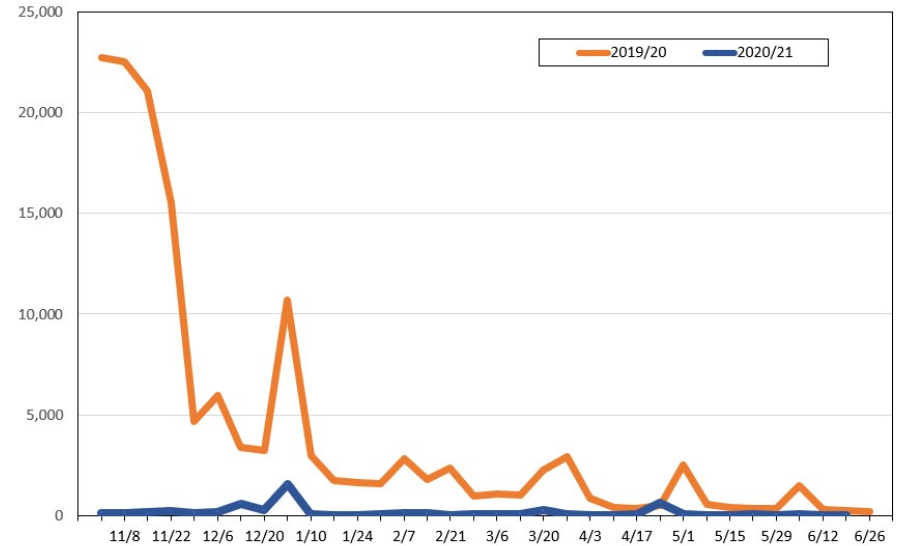
Update: Oct 25, 2020

Travel Agency Weekly Bookings for Future Travel to Hawai'i as of October 25, 2020
U.S.



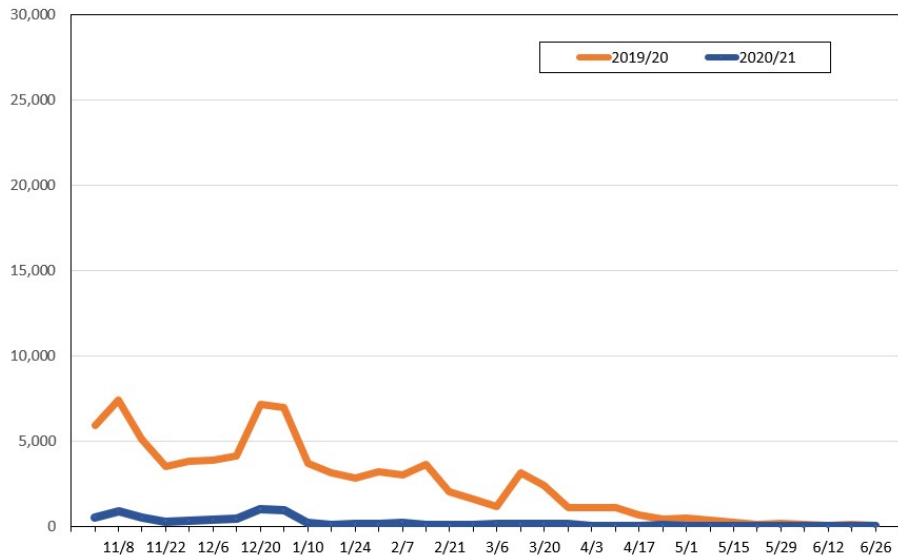
Source: Global Agency Pro, as of October 25, 2020

Travel Agency Weekly Bookings for Future Travel to Hawai'i as of October 25, 2020
Japan



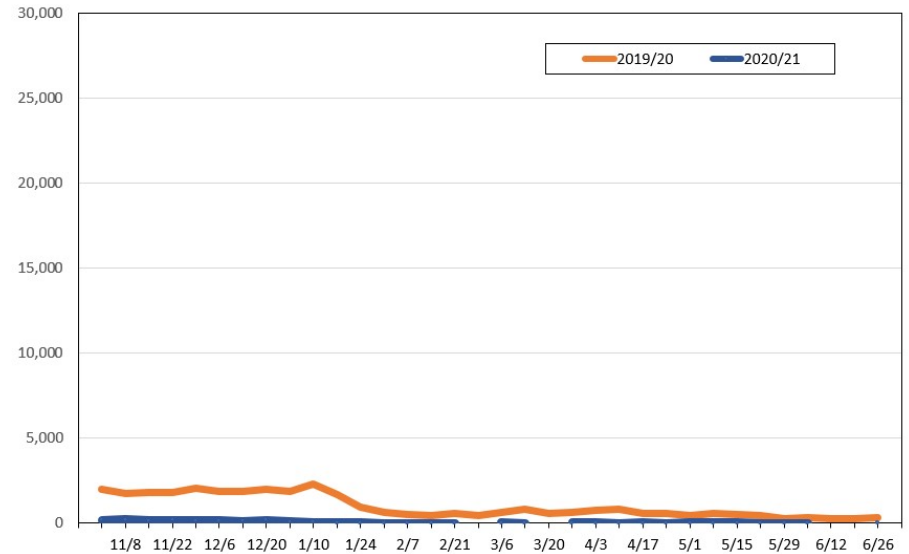
Source: Global Agency Pro, as of October 25, 2020

Travel Agency Weekly Bookings for Future Travel to Hawai'i as of October 25, 2020
Canada



Source: Global Agency Pro, as of October 25, 2020

Travel Agency Weekly Bookings for Future Travel to Hawai'i as of October 25, 2020
Australia



Source: Global Agency Pro, as of October 25, 2020