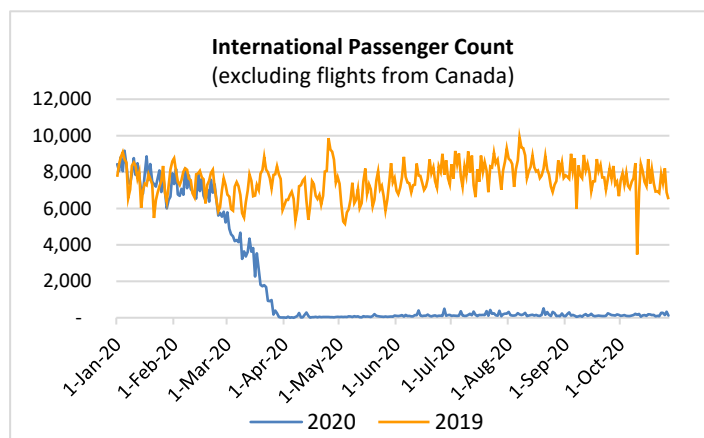
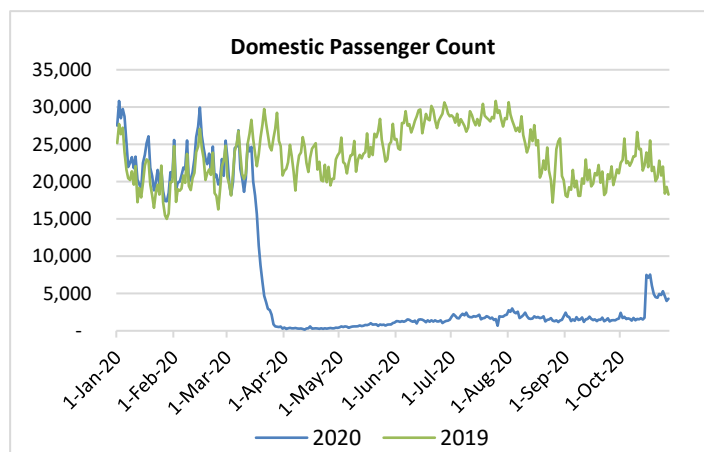
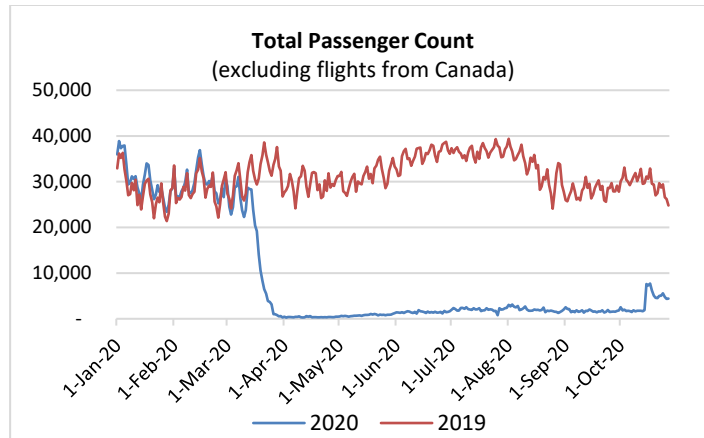


HTA COVID-19 UPDATE

(Issued: 10/28/20 @ 4:00pm)

Reason for Trip by Arrival Airport - Transpacific Screened Passengers as of 10/27/20	Honolulu (HNL)	Kahului (OGG)	Kona (KOA)	Lihue (LIH)	Grand Total
Airline Crew	270	65	42	32	409
Essential Worker	88	12	12	6	118
Honeymoon	10	4	0	2	16
Intended Resident	129	18	18	7	172
Military or Federal Government	132	0	0	0	132
Other	32	13	6	7	58
Other Business	103	31	23	12	169
Pleasure/Vacation	491	495	123	175	1,284
Returning Resident	774	152	112	50	1,088
To Attend School	8	1	0	0	9
To Get Married	1	2	0	0	3
Transit	183	0	1	0	184
Visiting Friends or Relatives	520	118	63	28	729
Grand Total	2,741	911	400	319	4,371
Source: Safe Travels program developed by the State of Hawaii Office of Enterprise Technology Services Note: The data is preliminary and subject to change					



Daily Passenger Count Table

10/27/2020	Domestic	International	Total
Oahu	2857	124	2981
Maui	833		833
Island of Hawaii	338		338
Kauai	278		278
State	4306	124	4430

Market Impact Update: <https://www.dropbox.com/10/28/20 HTA COVID19 Update>

Novel Coronavirus in Hawaii

COVID-19 Positive Cases

Cumulative totals as of 12:00 noon on October 28, 2020

Total Cases	14,834* (62 new)
Hawaii	1,238
Kauai	63
Lanai	94
Maui	405†
Molokai	17
Oahu	12,953
Pending	0
Residents diagnosed outside of Hawaii	64
Required Hospitalization	1,081‡
Hawaii Deaths	213**
Released from Isolation	11,605§

Footnotes for COVID-19 Cases

*As a result of updated information, one case from Oahu was removed from the counts.

**As a result of updated information, two previously reported deaths were determined to not be related to COVID-19 and were removed from the counts (1 from Lanai, and 1 from Maui).

†One case is a Lanai resident whose exposure is on Maui Island and who will be remaining on Maui Island for the interim.

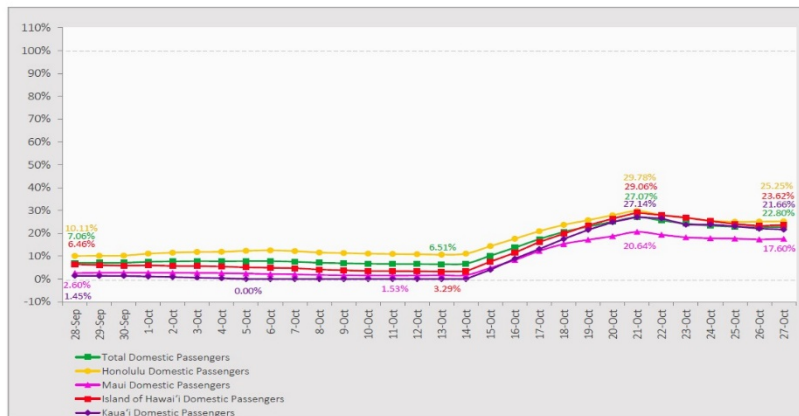
‡Includes Hawaii residents hospitalized out of state.

§Includes cases that meet isolation release criteria (Isolation should be maintained until at least 24 hours after resolution of fever and myalgia without the use of antipyretics OR at least 10 days have passed since symptom onset, whichever is longer). (The cases that have died and one case that has left the jurisdiction have been removed from these counts). Positive cases include confirmed cases, and Hawaii residents and non-residents; data are preliminary and subject to change. Note that CDC provides case counts according to states of residence.

7-Day Domestic by Island Moving Average Daily Passenger Volume

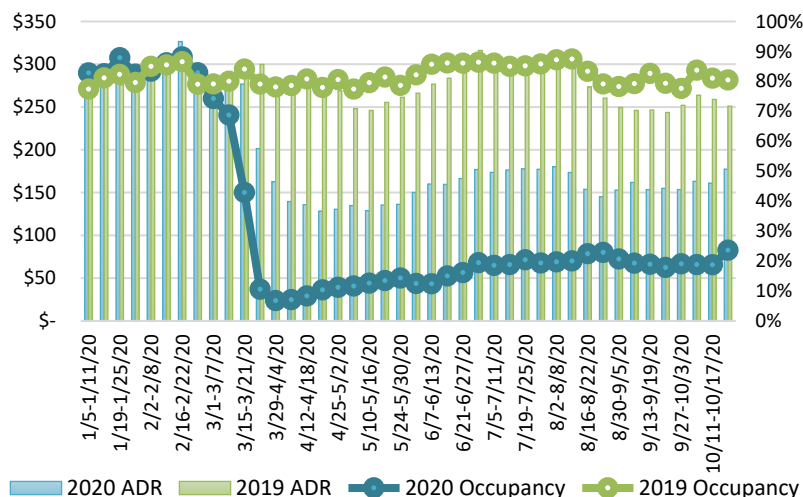
2020 Volume as Percentage of 2019 Volume

Through October 27, 2020



Source: HVCB analysis based on data from DBEDT
Note: Passenger volume figures include both visitors and residents.

State of Hawai'i Hotel Performance by Week - 2020 vs 2019



Source: STR, Inc. © Copyright 2020 Hawai'i Tourism Authority

Hawaii Hotel Performance Info:

For the week of October 18 – October 24, 2020

	Occupancy	ADR	RevPAR
State of Hawaii	23.6%	\$ 177.35	\$ 41.85
Oahu	23.4%	\$ 162.41	\$ 37.97
Maui County	17.5%	\$ 241.90	\$ 42.40
Kauai County	28.8%	\$ 179.11	\$ 51.57
Island of Hawaii	35.2%	\$ 145.60	\$ 51.19

Domestic by Island Month-to-Date and Year-to-Date Daily Passenger Volume

2020 Volume versus 2019 Volume

Through October 27, 2020

October 2020 (Month-to-Date through October 27)

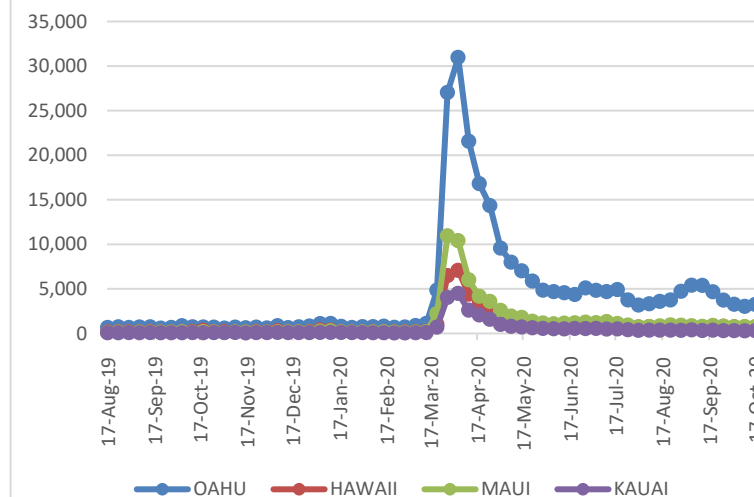
	2020	2019	Volume Change	Percent Change
Honolulu	62,923	330,037	-267,114	-80.9%
Maui County	15,739	162,084	-146,345	-90.3%
Island of Hawai'i	8,594	61,701	-53,107	-86.1%
Kaua'i	6,211	55,372	-49,161	-88.8%
Total	93,467	609,194	-515,727	-84.7%

2020 (Year-to-Date through October 27)

	2020	2019	Volume Change	Percent Change
Honolulu	1,227,201	3,809,287	-2,582,086	-67.8%
Maui County	473,419	1,856,154	-1,382,735	-74.5%
Island of Hawai'i	238,157	814,835	-576,678	-70.8%
Kaua'i	158,275	634,833	-476,558	-75.1%
Total	2,097,052	7,115,109	-5,018,057	-70.5%

Source: HVCB analysis based on data from DBEDT
Note: Passenger volume figures include both visitors and residents. Total includes other international passengers. 2020 includes one additional day due to Leap Year (February 29th, 2020).

2020 Initial Weekly Unemployment Claims by Island



Weekly Unemployment Initial Claims: October 17, 2020

State of Hawaii	5,119
C&C of Oahu	3,247
Hawaii County	705
Maui County	750
Kauai County	295
Agent (filed in Hawaii against another state)	122

News Highlights

October 28, 2020

Honolulu Star Advertiser: [Hawaii to welcome Japanese travelers next month through the state's pre-arrival testing program](#)

Hawaii News Now: [Kim: Big Island virus spike due to local spread, not travel](#)

KHON2: [DOH confirms traveler tested positive for COVID-19 coming into Honolulu](#)

KHON2: [How Kalawao County on Molokai managed to stay COVID-19 free](#)

KITV4: [Watch: HTA creates new video to educate visitors to the state](#)

Hawaii Magazine: [Visitors are Back in Hawaii: What Does Waikiki and Haleiwa Look Like Now?](#)

Hawaii Tribune-Herald: [Mobile COVID-19 testing vans to roll out soon](#)

Good Morning America: [Hawaii vacationers stuck in hotel rooms sent back home](#)

Travel + Leisure: [I Traveled to Hawaii During the Coronavirus Pandemic — Here's What It Was Like](#)

Helpful Resources

Department of Health
<https://hawaii.covid19.com/>

Department of Health

<https://health.hawaii.gov/docd/advisories/novel-coronavirus-2019>

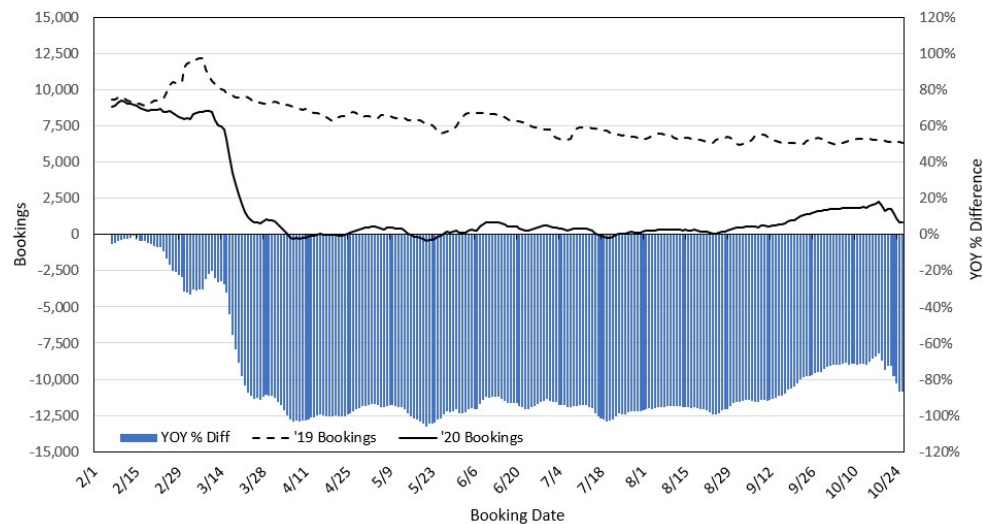
Dept. of Business, Economic Development & Tourism

<https://dbedt.hawaii.gov/economic/covid19/>

Department of Transportation

<https://hidot.hawaii.gov/coronavirus/>

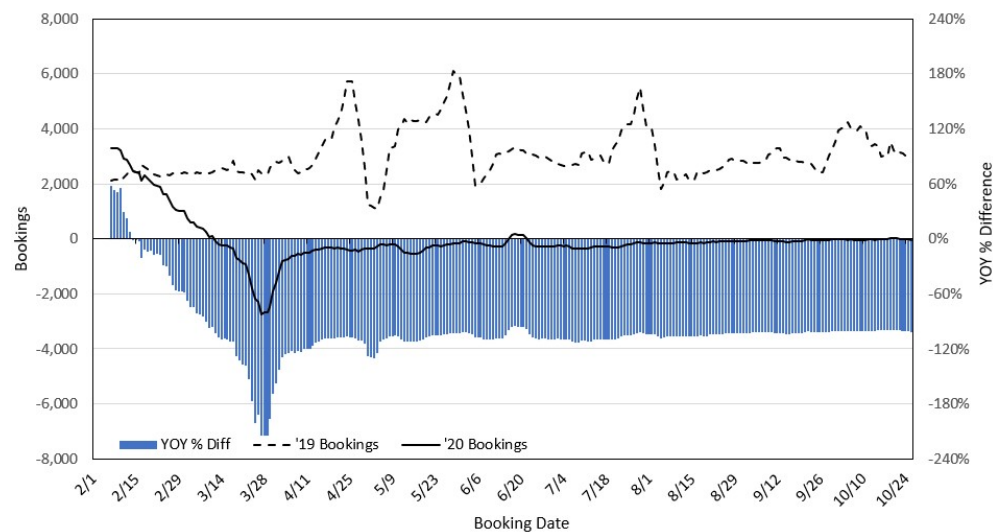
Travel Agency Bookings to Hawaii for Future Arrivals* Based on a 7-day Moving Average, 2020 vs 2019 U.S.



*Future Arrivals refers to all arrivals that are 'future' relative to the referenced booking date.
Source: Global Agency Pro

Update: Oct 26, 2020

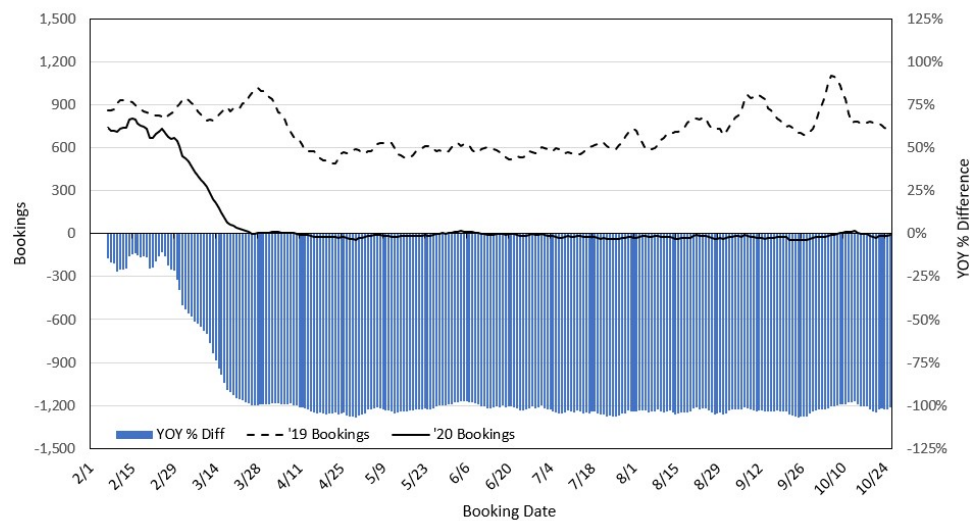
Travel Agency Bookings to Hawaii for Future Arrivals* Based on a 7-day Moving Average, 2020 vs 2019 Japan



*Future Arrivals refers to all arrivals that are 'future' relative to the referenced booking date.
Source: Global Agency Pro

Update: Oct 26, 2020

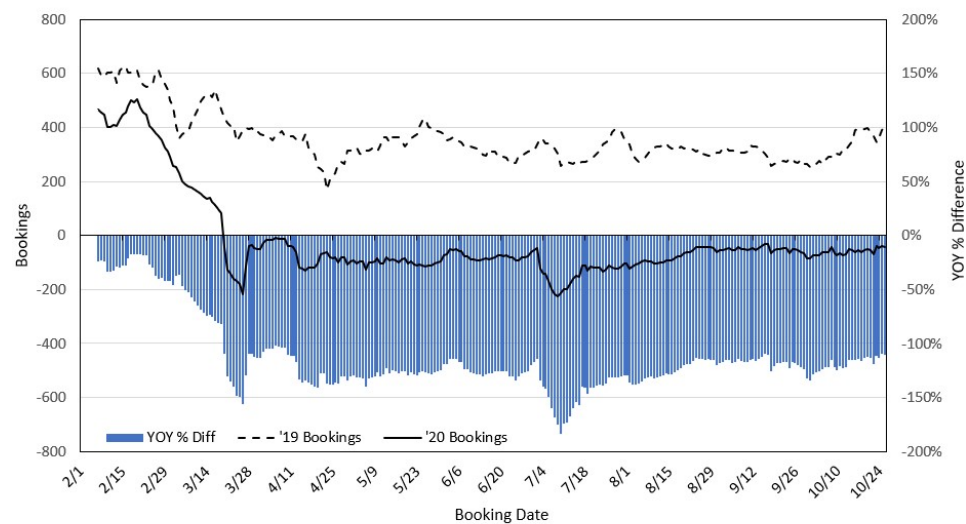
Travel Agency Bookings to Hawaii for Future Arrivals* Based on a 7-day Moving Average, 2020 vs 2019 Canada



*Future Arrivals refers to all arrivals that are 'future' relative to the referenced booking date.
Source: Global Agency Pro

Update: Oct 26, 2020

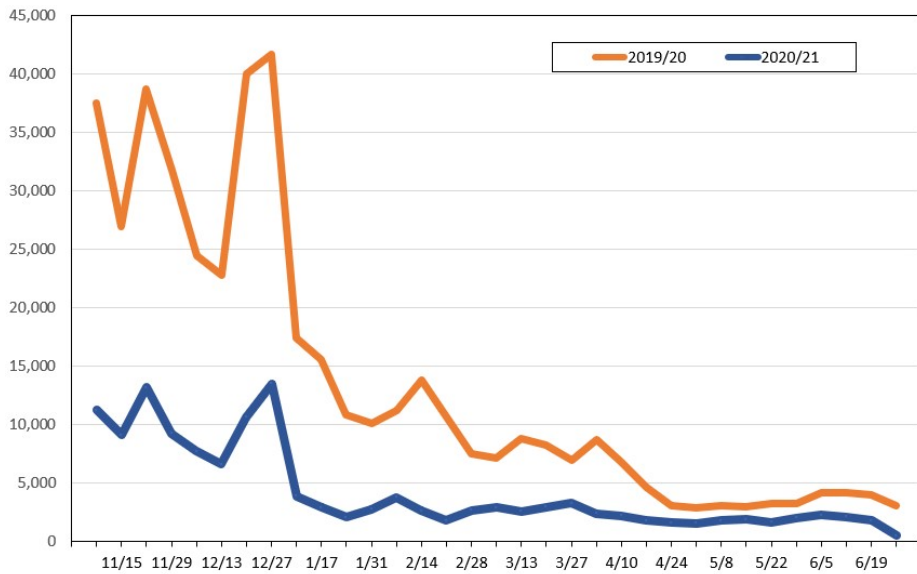
Travel Agency Bookings to Hawaii for Future Arrivals* Based on a 7-day Moving Average, 2020 vs 2019 Australia



*Future Arrivals refers to all arrivals that are 'future' relative to the referenced booking date.
Source: Global Agency Pro

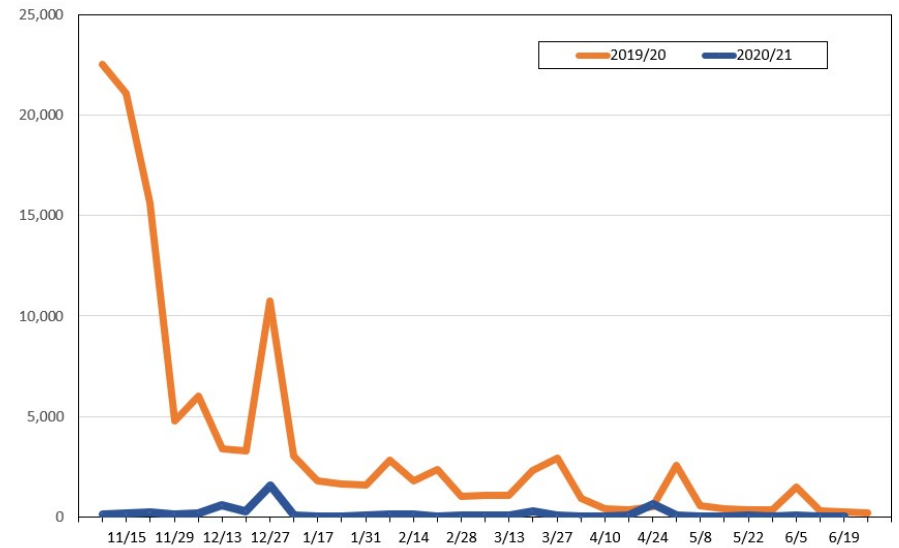
Update: Oct 26, 2020

Travel Agency Weekly Bookings for Future Travel to Hawai'i as of October 26, 2020
U.S.



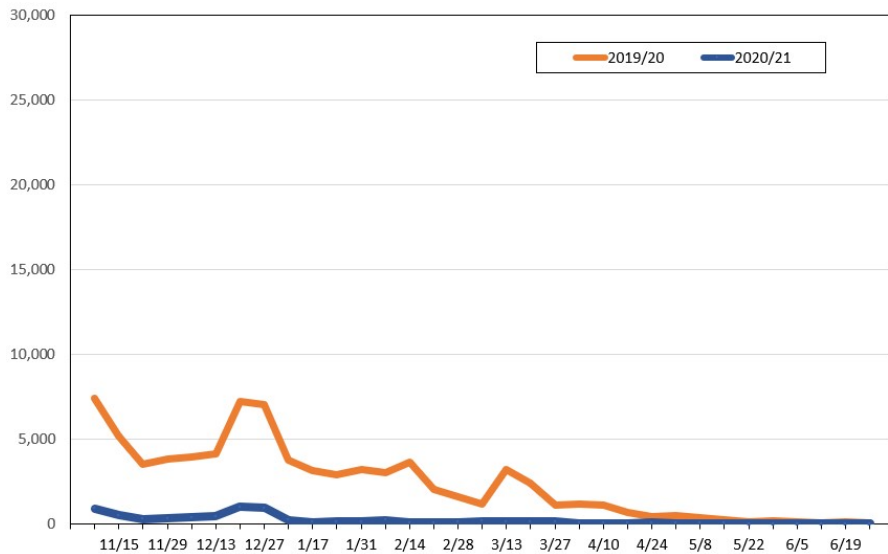
Source: Global Agency Pro, as of October 26, 2020

Travel Agency Weekly Bookings for Future Travel to Hawai'i as of October 26, 2020
Japan



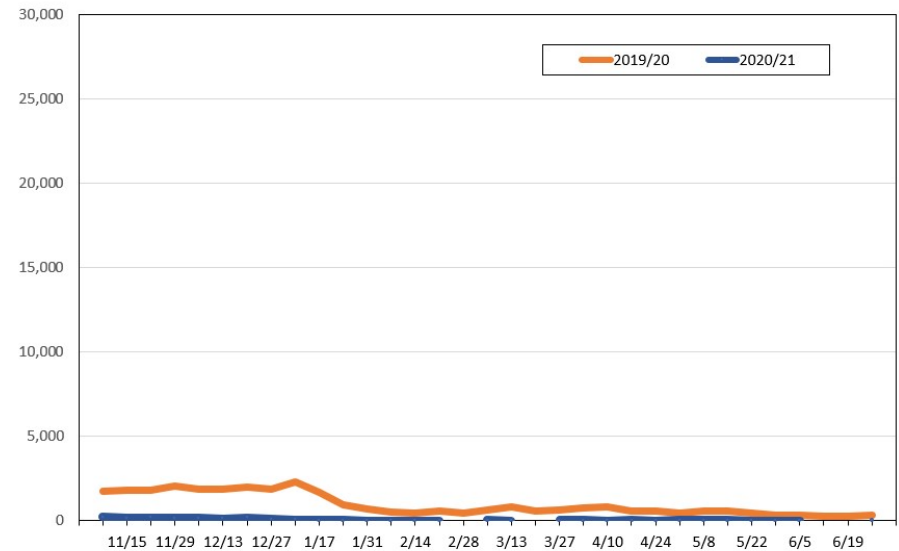
Source: Global Agency Pro, as of October 26, 2020

Travel Agency Weekly Bookings for Future Travel to Hawai'i as of October 26, 2020
Canada



Source: Global Agency Pro, as of October 26, 2020

Travel Agency Weekly Bookings for Future Travel to Hawai'i as of October 26, 2020
Australia



Source: Global Agency Pro, as of October 26, 2020