

# HTA COVID-19 UPDATE

(Issued: 10/29/20 @ 4:00pm)

Reason for Trip by Arrival Airport - Transpacific Screened Passengers as of 10/28/20	Honolulu (HNL)	Kahului (OGG)	Kona (KOA)	Lihue (LIH)	Grand Total
Airline Crew	268	63	41	36	408
Essential Worker	70	10	9	1	90
Honeymoon	11	10	0	0	21
Incentive Trip	1	0	0	2	3
Intended Resident	92	37	34	6	169
Military or Federal Government	133	0	3	2	138
Other	56	13	15	4	88
Other Business	105	33	30	11	179
Pleasure/Vacation	661	477	144	266	1,548
Returning Resident	617	128	128	32	905
To Attend School	3	0	1	0	4
To Get Married	5	0	0	0	5
Transit	203	0	8	0	211
Visiting Friends or Relatives	572	123	103	55	853
<b>Grand Total</b>	<b>2,797</b>	<b>894</b>	<b>516</b>	<b>415</b>	<b>4,622</b>

**Source:** Safe Travels program developed by the State of Hawaii Office of Enterprise Technology Services  
**Note:** The data is preliminary and subject to change

Market Impact Update: <https://www.dropbox.com/10/29/20 HTA COVID19 Update>

## Novel Coronavirus in Hawaii

### COVID-19 Positive Cases

Cumulative totals as of 12:00 noon on October 29, 2020

Total Cases	14,911* (77 new)
Hawaii	1,246
Kauai	64
Lanai	97
Maui	404†
Molokai	17
Oahu	13,013
Pending	0
Residents diagnosed outside of Hawaii	70
Required Hospitalization	1,090‡
Hawaii Deaths	215
Released from Isolation	11,682§

### Footnotes for COVID-19 Cases

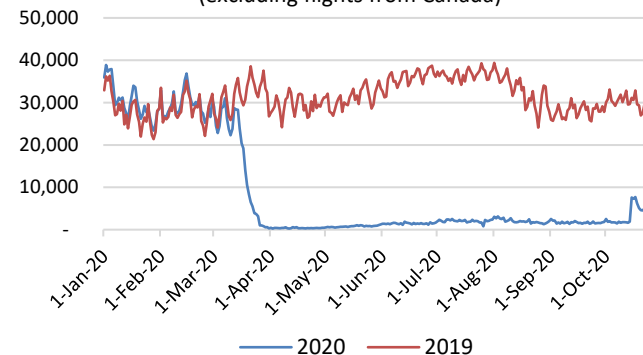
\*As a result of updated information, one case from Maui was recategorized to Lanai.

†One case is a Lanai resident whose exposure is on Maui Island and who will be remaining on Maui Island for the interim.

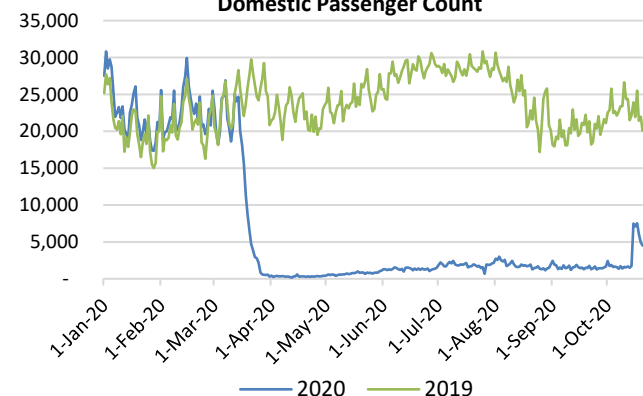
‡Includes Hawaii residents hospitalized out of state.

§Includes cases that meet isolation release criteria (Isolation should be maintained until at least 24 hours after resolution of fever and myalgia without the use of antipyretics OR at least 10 days have passed since symptom onset, whichever is longer). (The cases that have died and one case that has left the jurisdiction have been removed from these counts). Positive cases include confirmed cases, and Hawaii residents and non-residents; data are preliminary and subject to change. Note that CDC provides case counts according to states of residence.

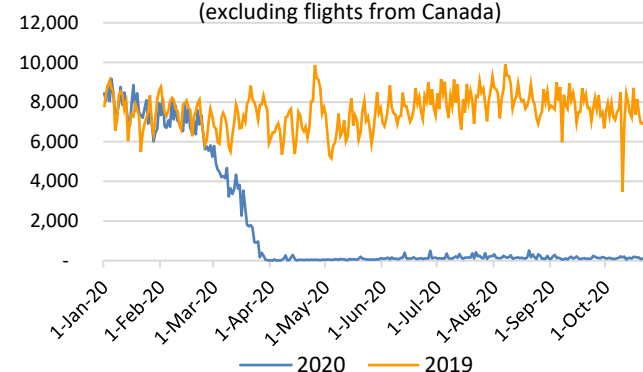
**Total Passenger Count**  
(excluding flights from Canada)



**Domestic Passenger Count**



**International Passenger Count**  
(excluding flights from Canada)



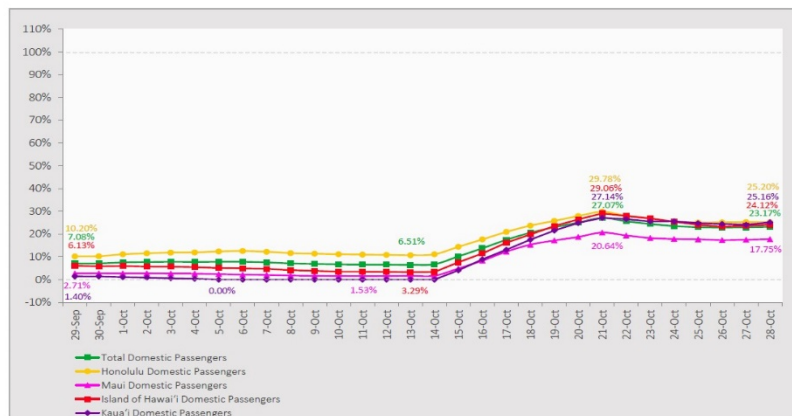
**Daily Passenger Count Table**

10/28/2020	Domestic	International	Total
Oahu	2858	143	3001
Maui	789		789
Island of Hawaii	444		444
Kauai	360		360
State	4451	143	4594

## 7-Day Domestic by Island Moving Average Daily Passenger Volume

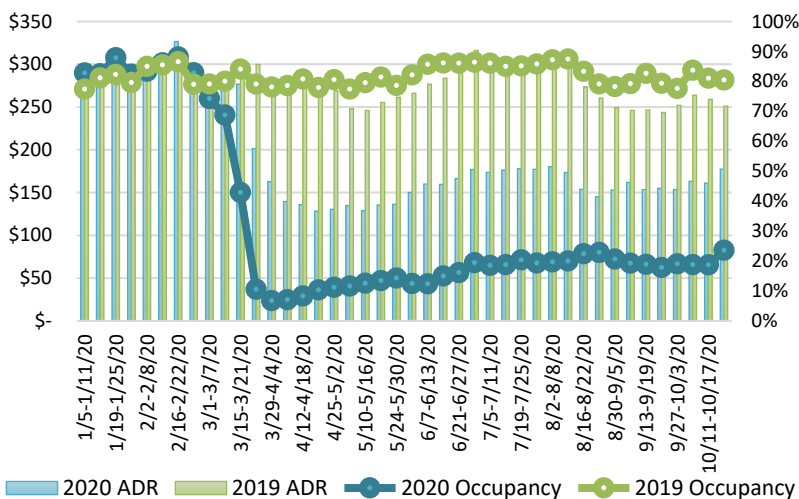
2020 Volume as Percentage of 2019 Volume

Through October 28, 2020



Source: HVCB analysis based on data from DBEDT  
Note: Passenger volume figures include both visitors and residents.

## State of Hawai'i Hotel Performance by Week - 2020 vs 2019



Source: STR, Inc. © Copyright 2020 Hawai'i Tourism Authority

## Hawaii Hotel Performance Info:

For the week of October 18 – October 24, 2020

	Occupancy	ADR	RevPAR
State of Hawaii	23.6%	\$ 177.35	\$ 41.85
Oahu	23.4%	\$ 162.41	\$ 37.97
Maui County	17.5%	\$ 241.90	\$ 42.40
Kauai County	28.8%	\$ 179.11	\$ 51.57
Island of Hawaii	35.2%	\$ 145.60	\$ 51.19

## Domestic by Island Month-to-Date and Year-to-Date Daily Passenger Volume

2020 Volume versus 2019 Volume

Through October 28, 2020

October 2020 (Month-to-Date through October 28)

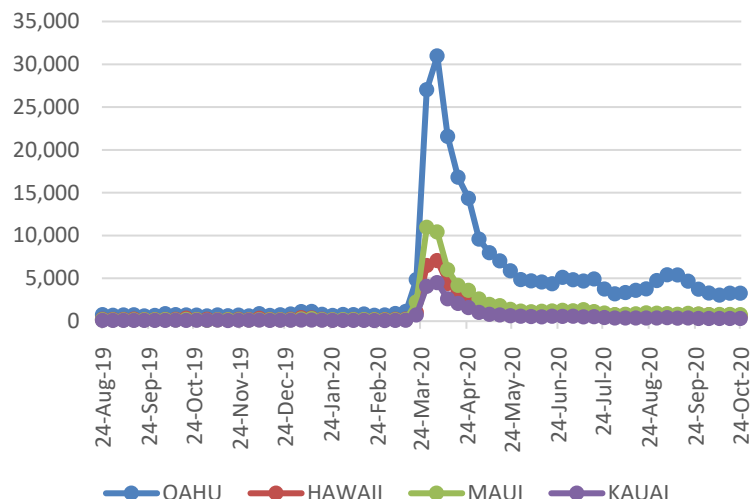
	2020	2019	Volume Change	Percent Change
Honolulu	65,781	341,462	-275,681	-80.7%
Maui County	16,499	166,847	-150,348	-90.1%
Island of Hawai'i	9,038	63,303	-54,265	-85.7%
Kaua'i	6,866	56,882	-50,016	-87.9%
Total	98,184	628,494	-530,310	-84.4%

2020 (Year-to-Date through October 28)

	2020	2019	Volume Change	Percent Change
Honolulu	1,230,059	3,820,712	-2,590,653	-67.8%
Maui County	474,179	1,860,917	-1,386,738	-74.5%
Island of Hawai'i	238,601	816,437	-577,836	-70.8%
Kaua'i	158,930	636,343	-477,413	-75.0%
Total	2,101,769	7,134,409	-5,032,641	-70.5%

Source: HVCB analysis based on data from DBEDT  
Note: Passenger volume figures include both visitors and residents. Total includes other international passengers. 2020 includes one additional day due to Leap Year (February 29th, 2020).

## 2020 Initial Weekly Unemployment Claims by Island



## Weekly Unemployment Initial Claims: October 24, 2020

State of Hawaii	4,933
C&C of Oahu	3,241
Hawaii County	571
Maui County	730
Kauai County	288
Agent (filed in Hawaii against another state)	103

## News Highlights

October 29, 2020

**Honolulu Star Advertisers:** [Kauai visitor tests positive for COVID-19 after twice testing negative](#)

**Honolulu Star Advertisers:** [Visitor from Norway, whose father died while she was en route to Hawaii, seeks full quarantine exemption](#)

**KHON2:** [Kauai visitor tests COVID-positive after testing negative for pre and post-travel tests](#)

**The Maui News:** [Two Lanaians are flown to hospitals with COVID-19](#)

**Hawaii Tribune-Herald:** [Free COVID-19 testing offered every Wednesday](#)

**The Garden Island:** [My mask can protect me and you](#)

**Forbes:** [United States Travel Restrictions By State](#)

**Forbes:** [Melbourne Ends Its Grueling 15-Week Lockdown, While Hawaii Welcomes Visitors From Japan](#)

**Travel Pulse:** [Lanai, Hawaii, Shuts Down After COVID-19 Outbreak](#)

**ABC News:** [Here's what it's like traveling to Hawaii during a pandemic](#)

### Helpful Resources

Department of Health  
<https://hawaiiicovid19.com/>

### Department of Health

<https://health.hawaii.gov/docd/advisories/novel-coronavirus-2019>

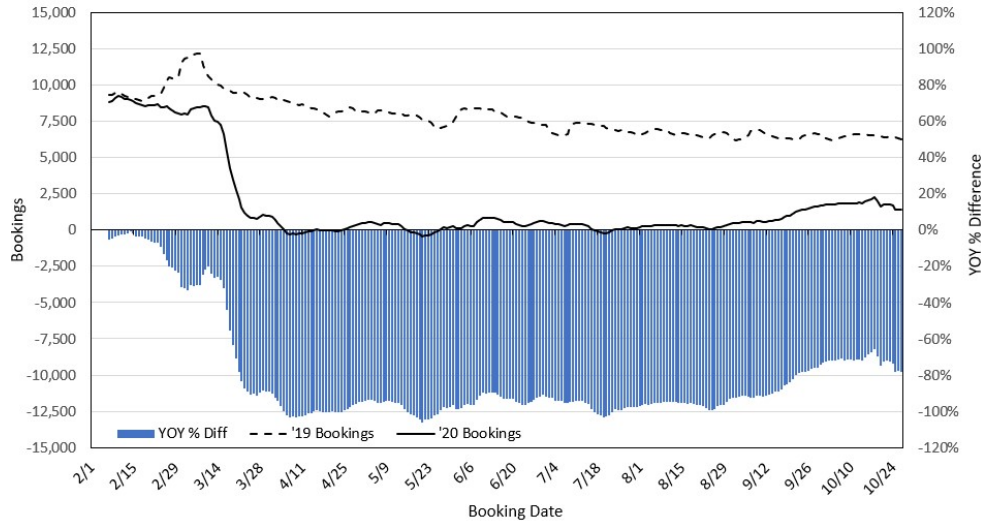
### Dept. of Business, Economic Development & Tourism

<https://dbedt.hawaii.gov/economic/covid19/>

### Department of Transportation

<https://hidot.hawaii.gov/coronavirus/>

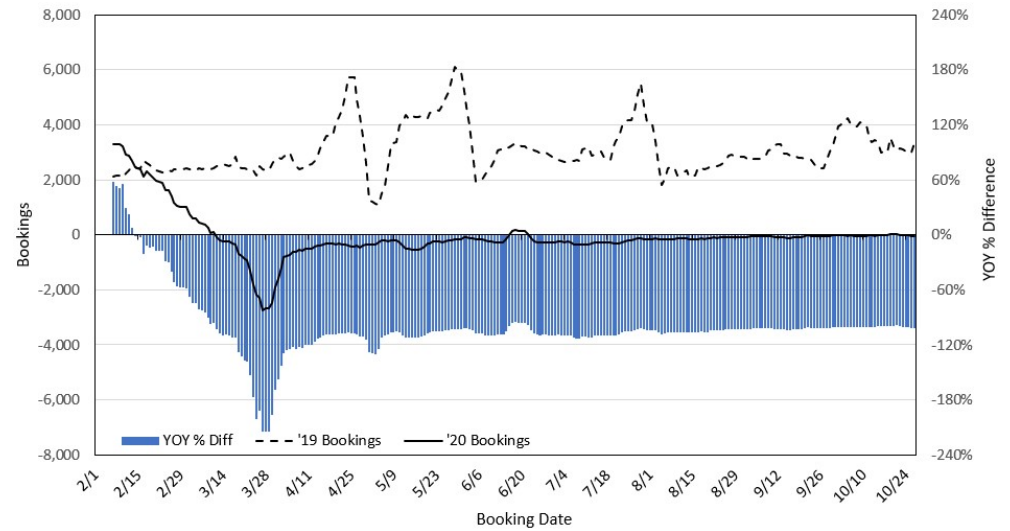
### Travel Agency Bookings to Hawaii for Future Arrivals\* Based on a 7-day Moving Average, 2020 vs 2019 U.S.



\*Future Arrivals refers to all arrivals that are 'future' relative to the referenced booking date.  
Source: Global Agency Pro

Update: Oct 27, 2020

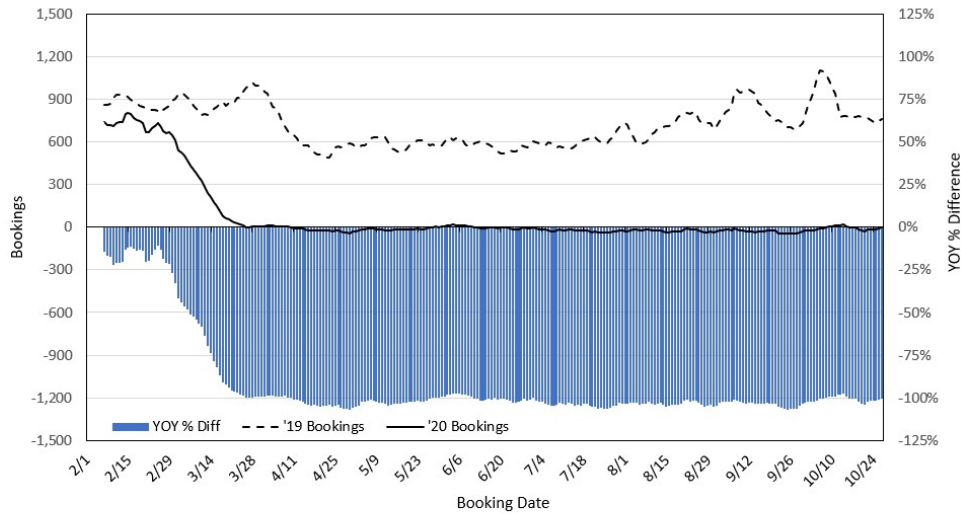
### Travel Agency Bookings to Hawaii for Future Arrivals\* Based on a 7-day Moving Average, 2020 vs 2019 Japan



\*Future Arrivals refers to all arrivals that are 'future' relative to the referenced booking date.  
Source: Global Agency Pro

Update: Oct 27, 2020

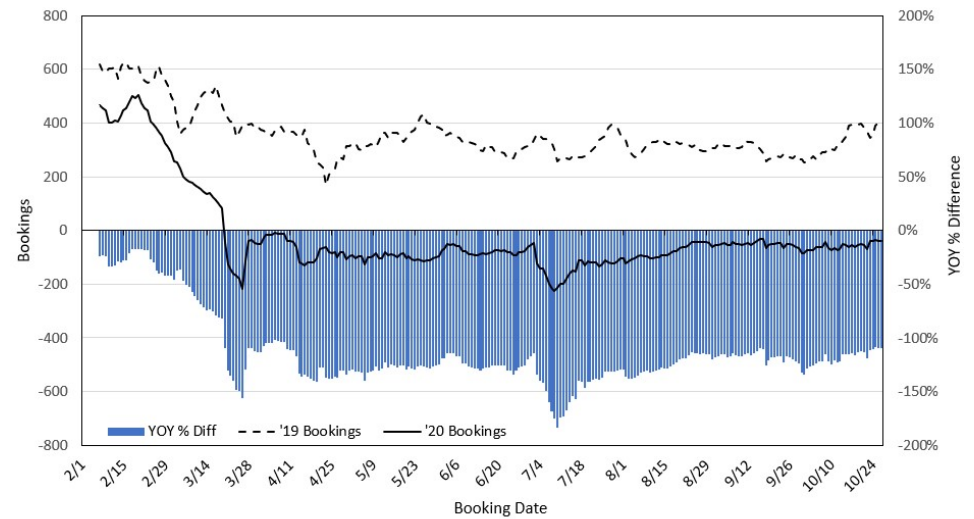
### Travel Agency Bookings to Hawaii for Future Arrivals\* Based on a 7-day Moving Average, 2020 vs 2019 Canada



\*Future Arrivals refers to all arrivals that are 'future' relative to the referenced booking date.  
Source: Global Agency Pro

Update: Oct 27, 2020

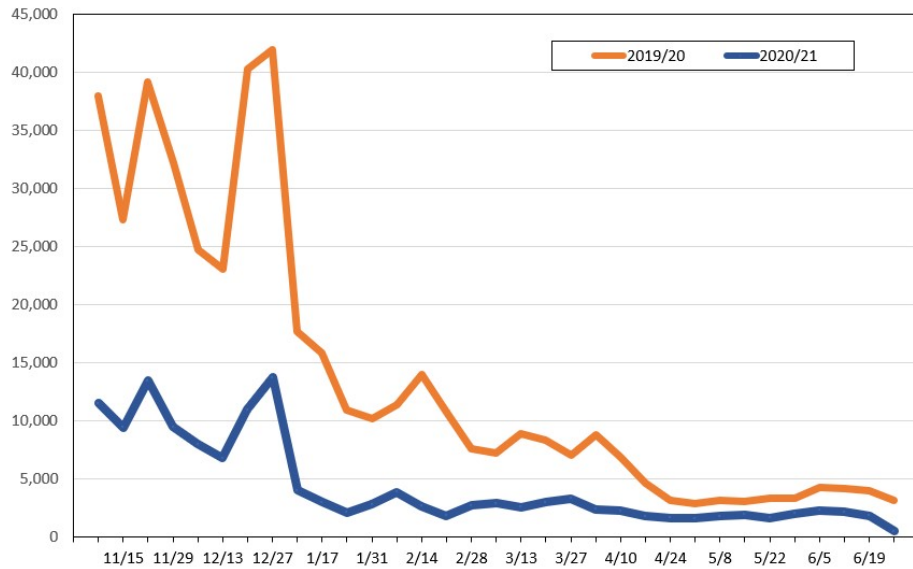
### Travel Agency Bookings to Hawaii for Future Arrivals\* Based on a 7-day Moving Average, 2020 vs 2019 Australia



\*Future Arrivals refers to all arrivals that are 'future' relative to the referenced booking date.  
Source: Global Agency Pro

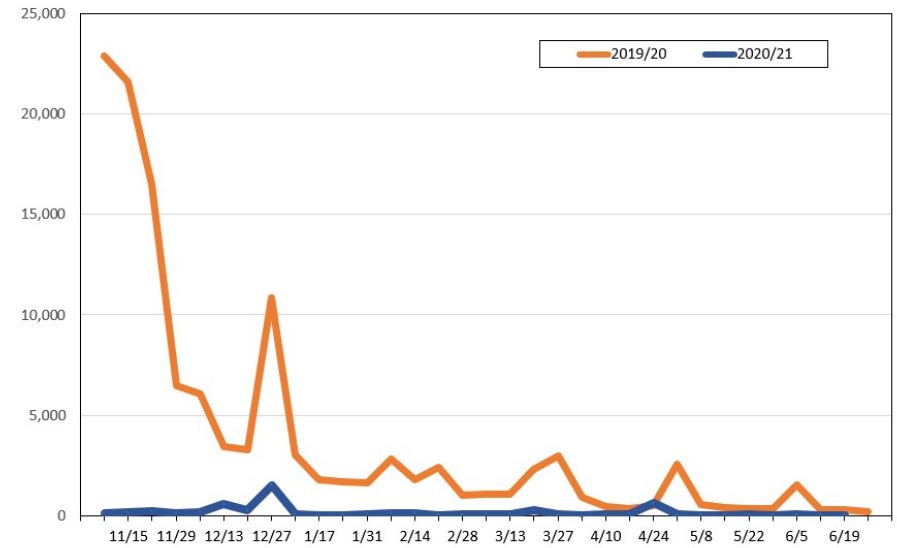
Update: Oct 27, 2020

**Travel Agency Weekly Bookings for Future Travel to Hawai'i as of October 27, 2020**  
**U.S.**



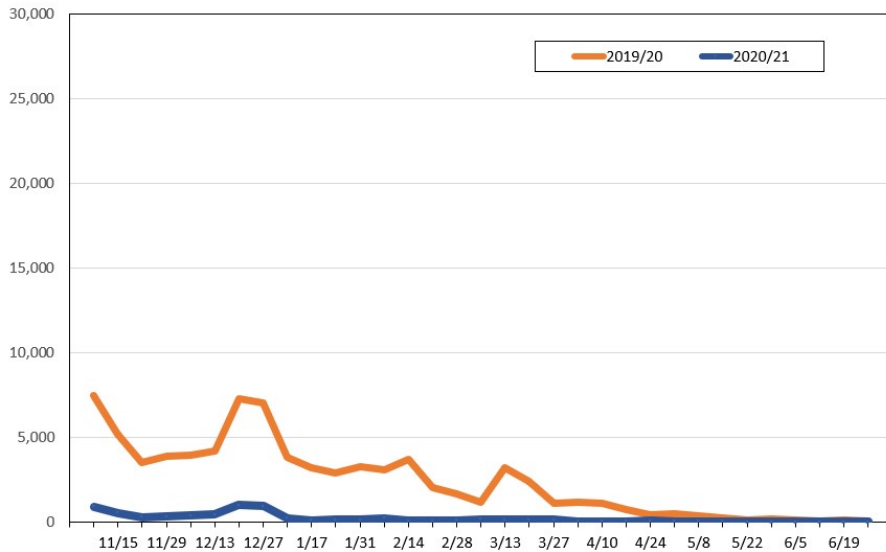
Source: Global Agency Pro, as of October 27, 2020

**Travel Agency Weekly Bookings for Future Travel to Hawai'i as of October 27, 2020**  
**Japan**



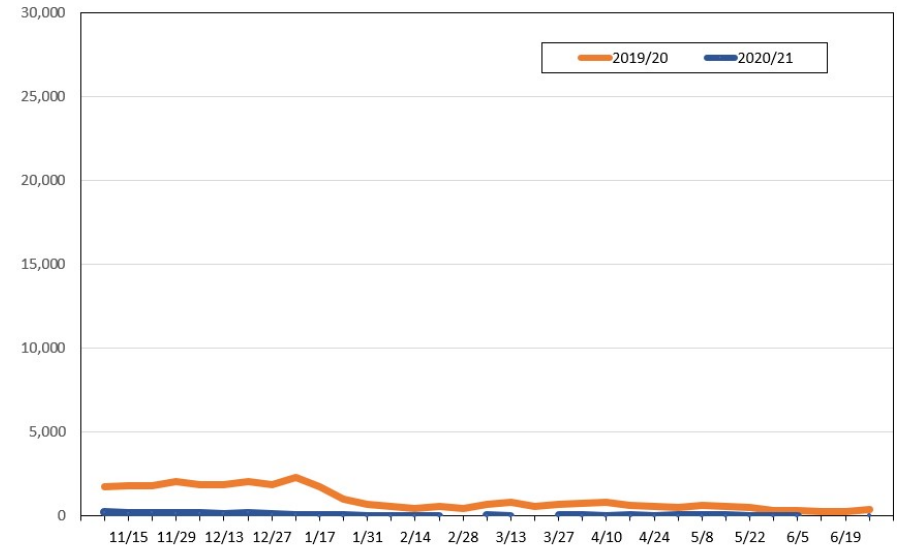
Source: Global Agency Pro, as of October 27, 2020

**Travel Agency Weekly Bookings for Future Travel to Hawai'i as of October 27, 2020**  
**Canada**



Source: Global Agency Pro, as of October 27, 2020

**Travel Agency Weekly Bookings for Future Travel to Hawai'i as of October 27, 2020**  
**Australia**



Source: Global Agency Pro, as of October 27, 2020