

# HTA COVID-19 UPDATE

(Issued: 10/30/20 @ 5:30pm)

Reason for Trip by Arrival Airport - Transpacific Screened Passengers as of 10/29/20	Honolulu (HNL)	Kahului (OGG)	Kona (KOA)	Lihue (LIH)	Grand Total
Airline Crew	314	74	61	33	482
Corporate Meeting	3	0	1	0	4
Essential Worker	110	14	11	4	139
Honeymoon	7	4	2	2	15
Incentive Trip	1	0	0	0	1
Intended Resident	109	19	47	17	192
Military or Federal Government	161	2	1	0	164
Other	54	14	17	12	97
Other Business	94	31	37	12	174
Pleasure/Vacation	941	763	251	332	2,287
Returning Resident	661	160	124	49	994
To Attend School	10	1	0	0	11
To Get Married	7	2	0	0	9
Transit	197	2	1	1	201
Visiting Friends or Relatives	690	138	115	65	1,008
<b>Grand Total</b>	<b>3,359</b>	<b>1,224</b>	<b>668</b>	<b>527</b>	<b>5,778</b>

**Source:** Safe Travels program developed by the State of Hawaii Office of Enterprise Technology Services

**Note:** The data is preliminary and subject to change

**Market Impact Update:** <https://www.dropbox.com/10/30/20 HTA COVID19 Update>

## Novel Coronavirus in Hawaii

### COVID-19 Positive Cases

*Cumulative totals as of 12:00 noon on October 30, 2020*

Total Cases	15,003* (94 new)
Hawaii	1,259
Kauai	64
Lanai	99
Maui	407†
Molokai	17
Oahu	13,087
Pending	0
Residents diagnosed outside of Hawaii	70
Required Hospitalization	1,097‡
Hawaii Deaths	216
Released from Isolation	11,738§

### Footnotes for COVID-19 Cases

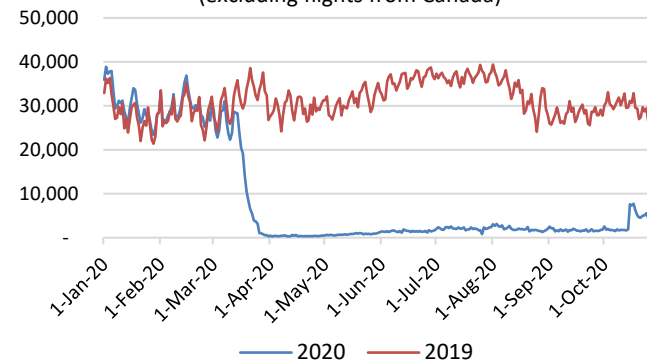
\*As a result of updated information, one case from Hawaii and one case from Kauai were removed from the counts.

†One case is a Lanai resident whose exposure is on Maui Island and who will be remaining on Maui Island for the interim.

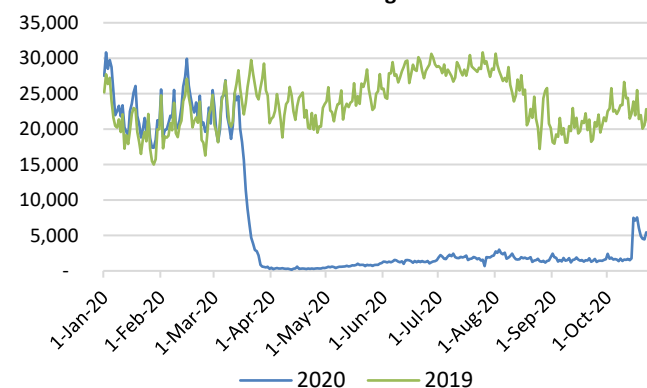
‡Includes Hawaii residents hospitalized out of state.

§Includes cases that meet isolation release criteria (Isolation should be maintained until at least 24 hours after resolution of fever and myalgia without the use of antipyretics OR at least 10 days have passed since symptom onset, whichever is longer). (The cases that have died and one case that has left the jurisdiction have been removed from these counts). Positive cases include confirmed cases, and Hawaii residents and non-residents; data are preliminary and subject to change. Note that CDC provides case counts according to states of residence.

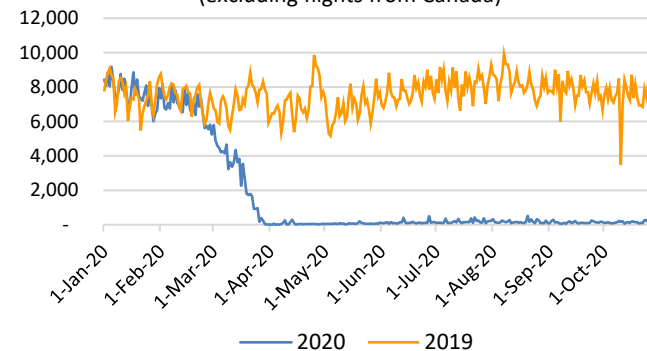
**Total Passenger Count**  
(excluding flights from Canada)



**Domestic Passenger Count**



**International Passenger Count**  
(excluding flights from Canada)

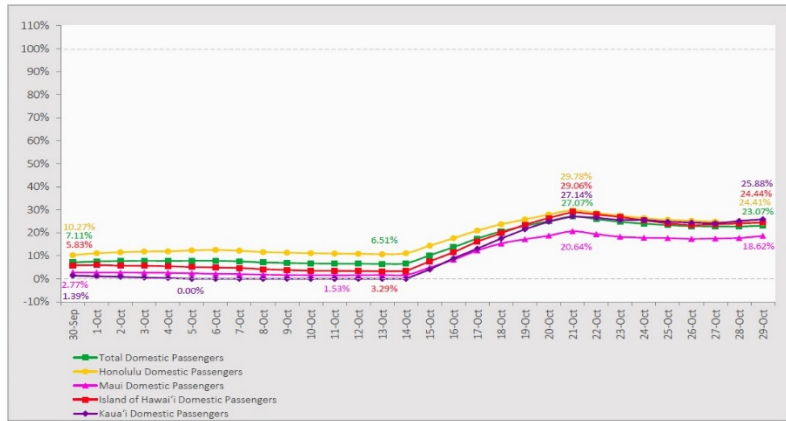


### Daily Passenger Count Table

10/29/2020	Domestic	International	Total
Oahu	3172	134	3306
Maui	1091		1091
Island of Hawaii	576		576
Kauai	467		467
State	5306	134	5440

## 7-Day Domestic by Island Moving Average Daily Passenger Volume

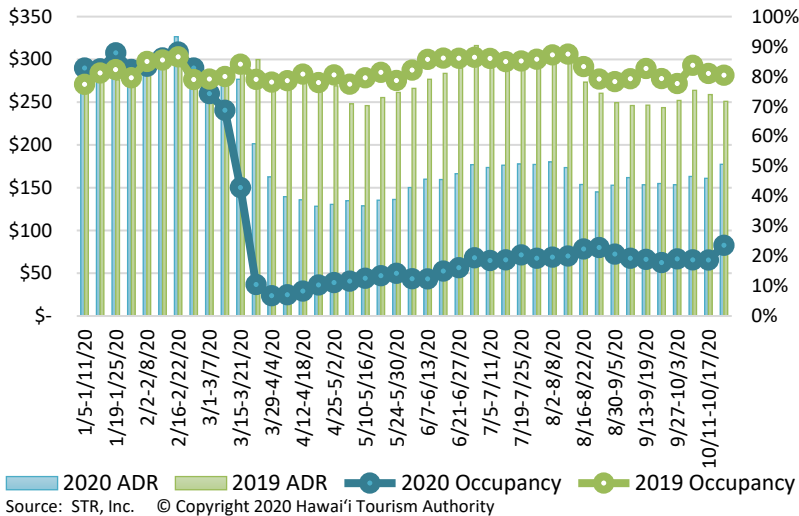
2020 Volume as Percentage of 2019 Volume  
Through October 29, 2020



Source: HVCB analysis based on data from DBEDT

Note: Passenger volume figures include both visitors and residents.

## State of Hawai'i Hotel Performance by Week - 2020 vs 2019



Source: STR, Inc. © Copyright 2020 Hawai'i Tourism Authority

## Hawaii Hotel Performance Info:

For the week of October 18 – October 24, 2020

	Occupancy	ADR	RevPAR
State of Hawaii	23.6%	\$ 177.35	\$ 41.85
Oahu	23.4%	\$ 162.41	\$ 37.97
Maui County	17.5%	\$ 241.90	\$ 42.40
Kauai County	28.8%	\$ 179.11	\$ 51.57
Island of Hawaii	35.2%	\$ 145.60	\$ 51.19

## Domestic by Island Month-to-Date and Year-to-Date Daily Passenger Volume

2020 Volume versus 2019 Volume  
Through October 29, 2020

October 2020 (Month-to-Date through October 29)

	2020	2019	Volume Change	Percent Change
Honolulu	68,323	352,083	-283,760	-80.6%
Maui County	17,590	171,646	-154,056	-89.8%
Island of Hawai'i	9,614	64,902	-55,288	-85.2%
Kaua'i	7,329	58,141	-50,812	-87.4%
Total	102,856	646,772	-543,916	-84.1%

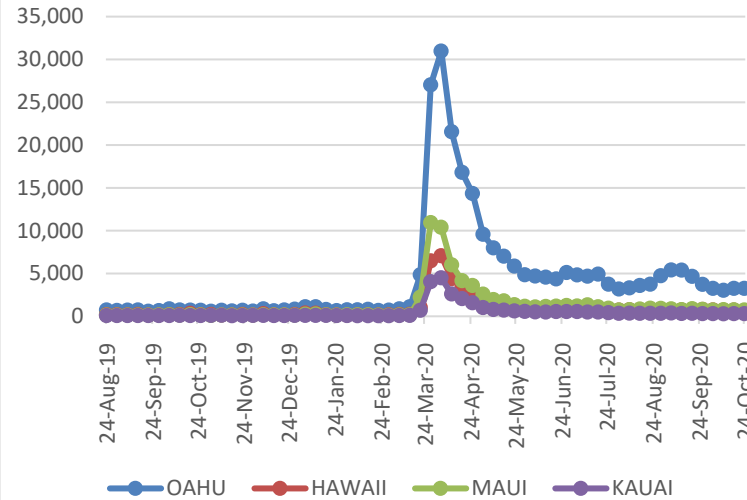
2020 (Year-to-Date through October 29)

	2020	2019	Volume Change	Percent Change
Honolulu	1,232,601	3,831,333	-2,598,732	-67.8%
Maui County	475,270	1,865,716	-1,390,446	-74.5%
Island of Hawai'i	239,177	818,036	-578,859	-70.8%
Kaua'i	159,393	637,602	-478,209	-75.0%
Total	2,106,440	7,152,687	-5,046,247	-70.6%

Source: HVCB analysis based on data from DBEDT

Note: Passenger volume figures include both visitors and residents. Total includes other international passengers. 2020 includes one additional day due to Leap Year (February 29th, 2020).

## 2020 Initial Weekly Unemployment Claims by Island



## Weekly Unemployment Initial Claims: October 24, 2020

State of Hawaii	4,933
C&C of Oahu	3,241
Hawaii County	571
Maui County	730
Kauai County	288
Agent (filed in Hawaii against another state)	103

## News Highlights

October 30, 2020

Honolulu Star Advertiser: [Hawaii tourism struggles to gain momentum](#)

KHON2: [COVID-19 data analyst projects spike from Halloween could come around Nov. 15](#)

KHON2: [Renewed calls for Gov. Ige to issue a statewide mask mandate](#)

Honolulu Magazine: [When it Comes to Reporting Quarantine Violations, There's a Line Between Safety and Self-Righteousness](#)

The Maui News: [New county mask rule strikes gaiters](#)

Hawaii Tribune-Herald: [More than 83,000 flew to Hawaii since Oct. 15](#)

The Garden Island: [Kollar: All must obey virus rules](#)

Travel Pulse: [New Report Reveals COVID-19's Impact on Hotel Rates](#)

Travel + Leisure: [Lanai Locks Down As Hawaii Welcomes Tourists With Negative COVID-19 Tests](#)

SF Gate: [Whoops. Passenger boards plane, flies to Hawaii with COVID-19](#)

## Helpful Resources

Department of Health  
<https://hawaii.covid19.com/>

## Department of Health

<https://health.hawaii.gov/docd/advisories/novel-coronavirus-2019>

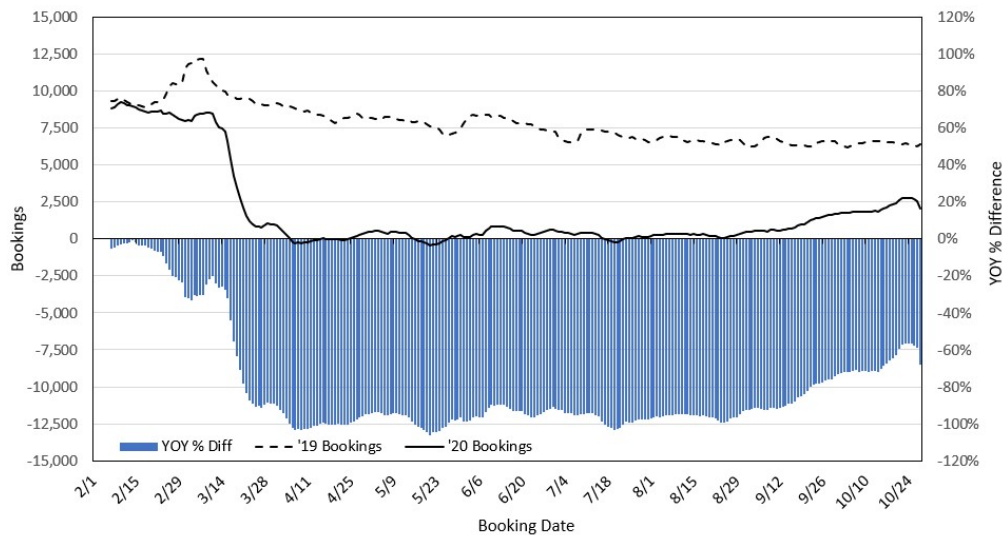
## Dept. of Business, Economic Development & Tourism

<https://dbedt.hawaii.gov/economic/covid19/>

## Department of Transportation

<https://hidot.hawaii.gov/coronavirus/>

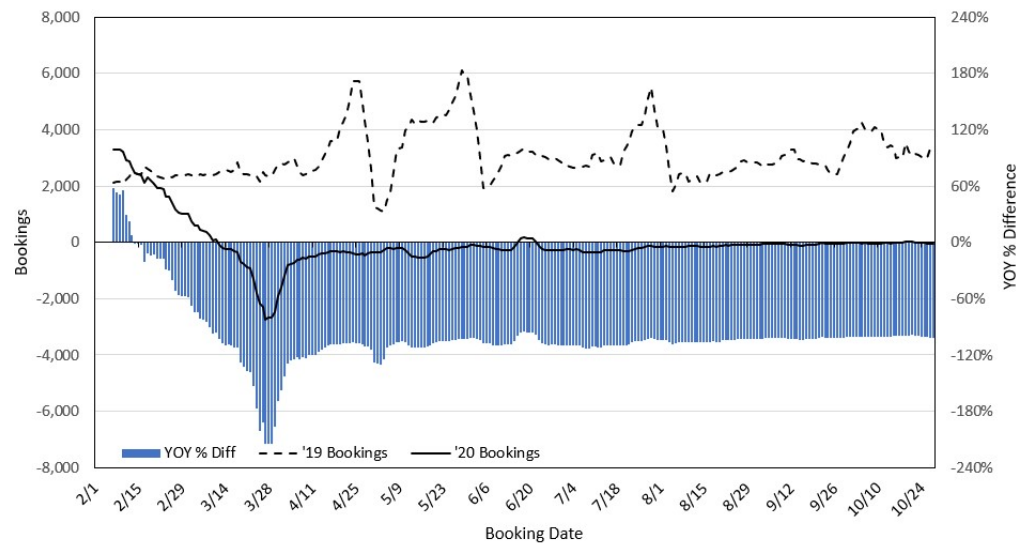
### Travel Agency Bookings to Hawaii for Future Arrivals\* Based on a 7-day Moving Average, 2020 vs 2019 U.S.



\*Future Arrivals refers to all arrivals that are 'future' relative to the referenced booking date.  
Source: Global Agency Pro

Update: Oct 28, 2020

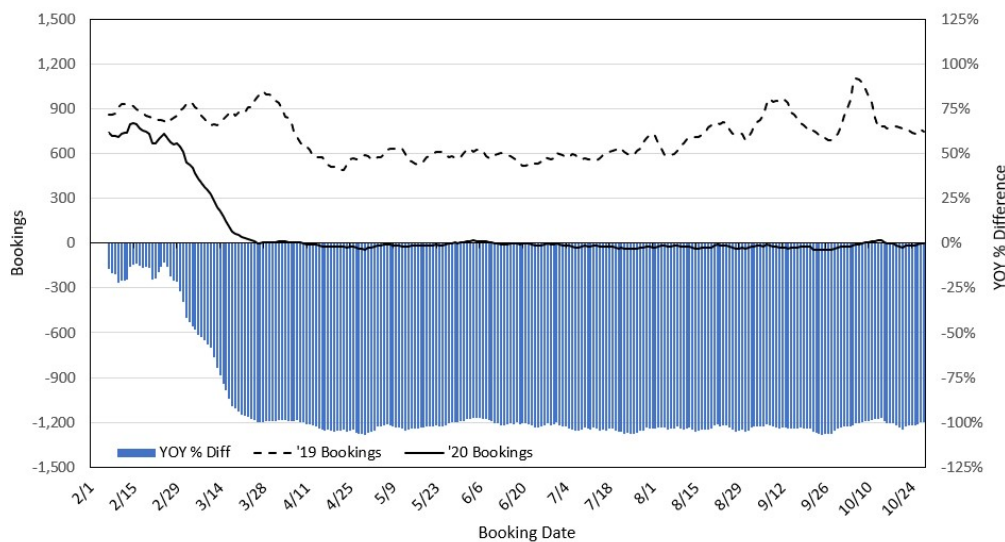
### Travel Agency Bookings to Hawaii for Future Arrivals\* Based on a 7-day Moving Average, 2020 vs 2019 Japan



\*Future Arrivals refers to all arrivals that are 'future' relative to the referenced booking date.  
Source: Global Agency Pro

Update: Oct 28, 2020

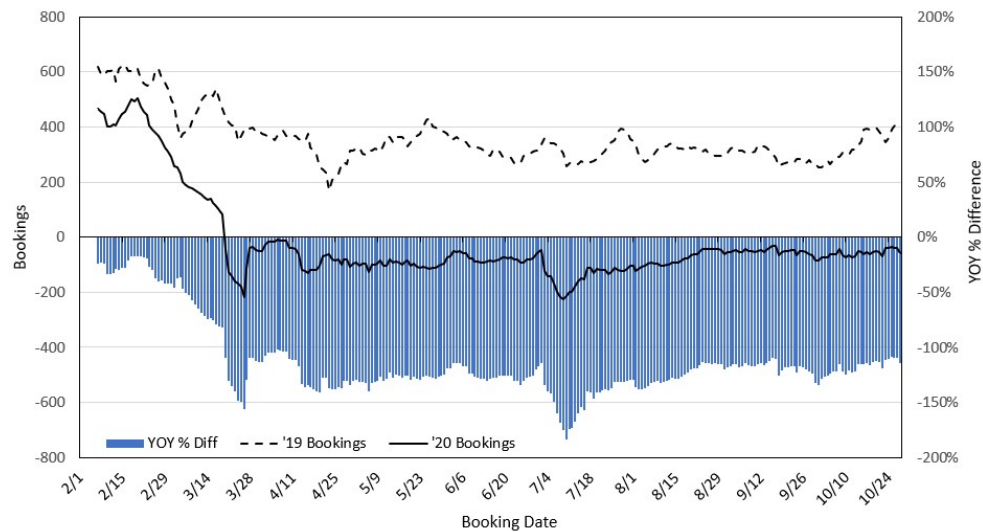
### Travel Agency Bookings to Hawaii for Future Arrivals\* Based on a 7-day Moving Average, 2020 vs 2019 Canada



\*Future Arrivals refers to all arrivals that are 'future' relative to the referenced booking date.  
Source: Global Agency Pro

Update: Oct 28, 2020

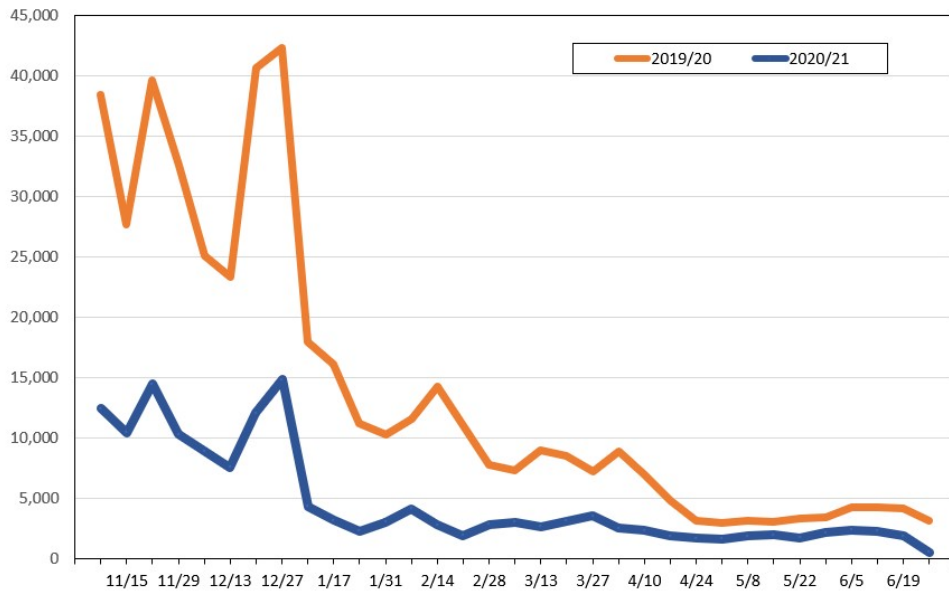
### Travel Agency Bookings to Hawaii for Future Arrivals\* Based on a 7-day Moving Average, 2020 vs 2019 Australia



\*Future Arrivals refers to all arrivals that are 'future' relative to the referenced booking date.  
Source: Global Agency Pro

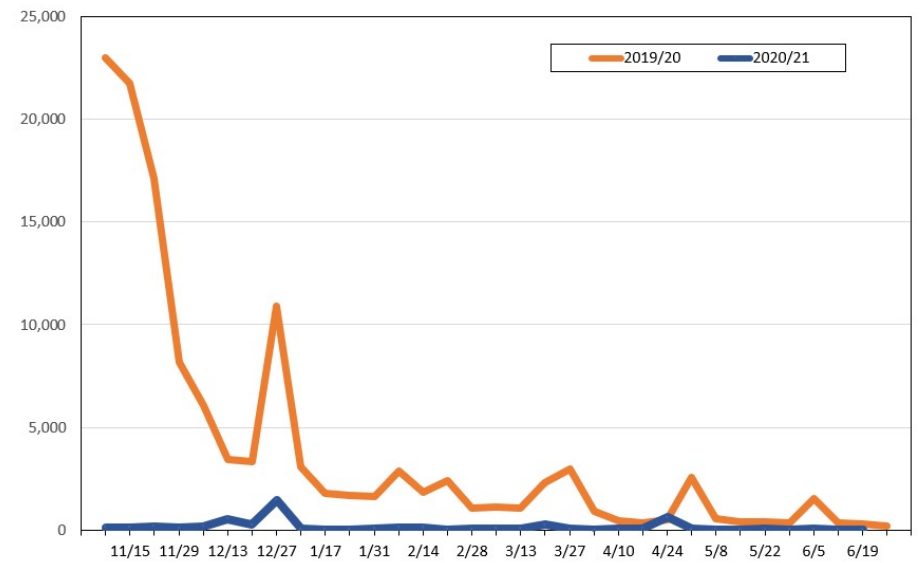
Update: Oct 28, 2020

**Travel Agency Weekly Bookings for Future Travel to Hawai'i as of October 28, 2020**  
**U.S.**



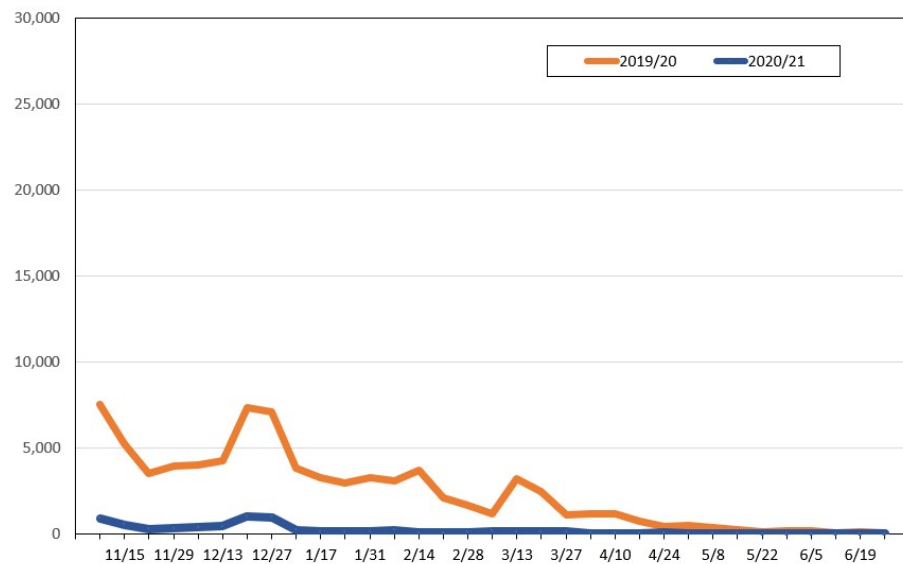
Source: Global Agency Pro, as of October 28, 2020

**Travel Agency Weekly Bookings for Future Travel to Hawai'i as of October 28, 2020**  
**Japan**



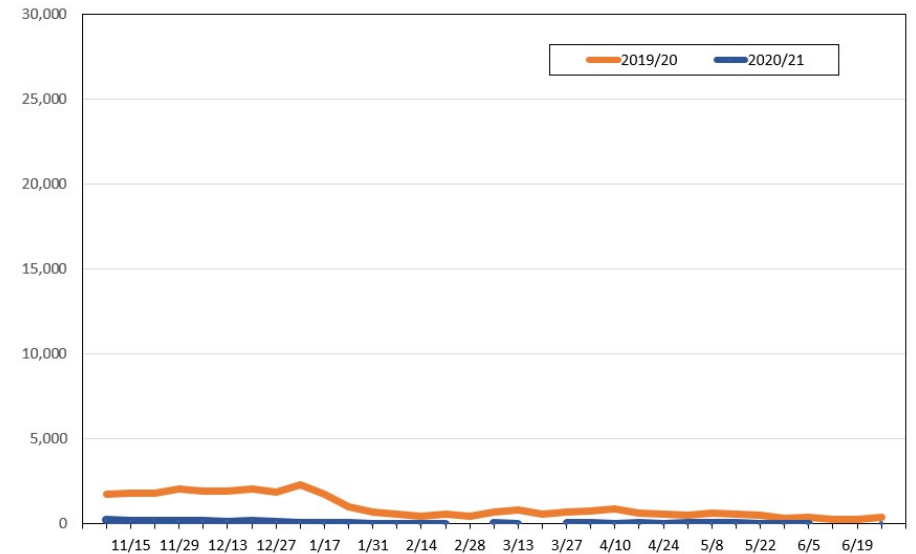
Source: Global Agency Pro, as of October 28, 2020

**Travel Agency Weekly Bookings for Future Travel to Hawai'i as of October 28, 2020**  
**Canada**



Source: Global Agency Pro, as of October 28, 2020

**Travel Agency Weekly Bookings for Future Travel to Hawai'i as of October 28, 2020**  
**Australia**



Source: Global Agency Pro, as of October 28, 2020