

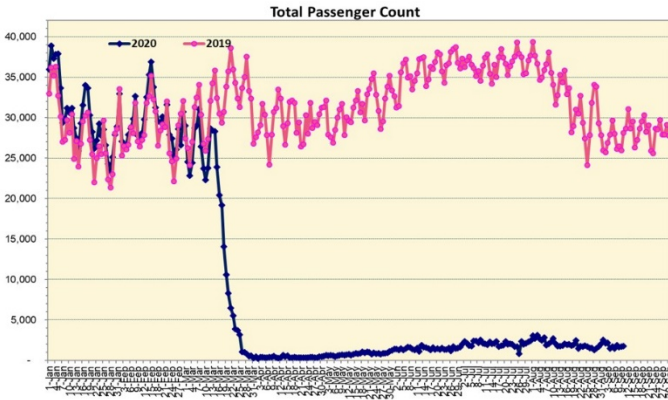
# HTA COVID-19 UPDATE

(Issued: 9/11/20 @ 4:30pm)

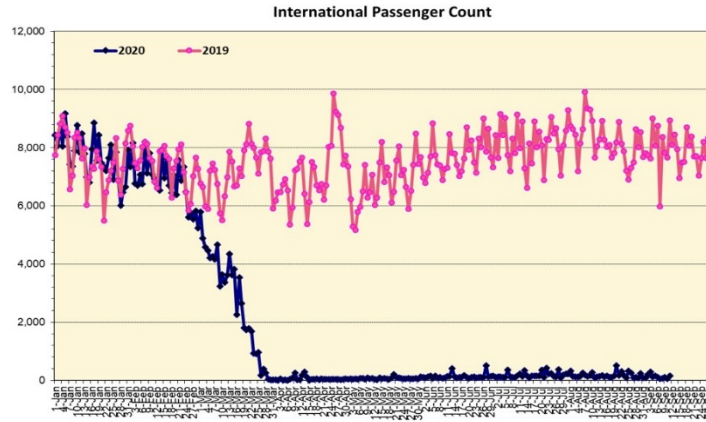
## Novel Coronavirus in Hawaii

COVID-19 Positive\* Cases

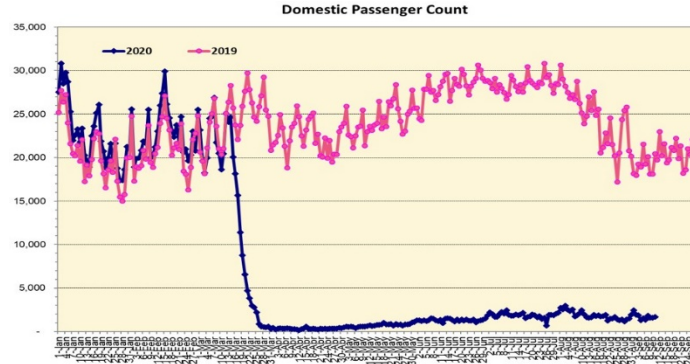
Cumulative totals as of 12:00 noon on September 11, 2020



Note: Excludes flights from Canada



Note: Excludes flights from Canada



### Daily Passenger Count Table

09/10/2020	Domestic	International	Total
Oahu	1392	62	1454
Maui	138		138
Island of Hawaii	123		123
Kauai	40		40
State	1693	62	1755

Market Impact Update: <https://www.dropbox.com/09/11/20 HTA COVID19 Update>

09/10/20 Hawaii Passenger Trans-Pacific Arrivals by Air	Honolulu (HNL)	Kahului (OGG)	Kona (KOA)	Lihue (LIH)	Grand Total
Airline Crew	208	24	13	5	250
Corporate Meeting	3	0	0	0	3
Essential Worker	67	16	5	14	102
Intended Resident	152	22	29	18	221
Military or Federal Government	133	0	1	0	134
Other	114	5	4	13	136
Other Business	68	17	8	8	101
Pleasure/Vacation	63	21	9	7	100
Returning Resident	450	72	73	41	636
To Attend School	15	2	3	2	22
Visiting Friends or Relatives	257	37	27	16	337
(blank)	0	0	0	0	0
Transit	N/A	N/A	N/A	N/A	N/A
Grand Total	1,530	216	172	124	2,042

Source: Safe Travels program developed by the State of Hawaii Office of Enterprise Technology Services

Note: The data is preliminary and subject to change

Statewide	Total
Total Cases	10459 (167 new)
Released from Isolation†	3334
Required Hospitalization	622
Deaths	96
BY COUNTY	Total
Hawaii County	
Total Cases	562
Released from Isolation†	261
Required Hospitalization	23
Deaths	3
Honolulu County	
Total Cases	9446
Released from Isolation†	2793
Required Hospitalization	549
Deaths	83
Kauai County	
Total Cases	58
Released from Isolation†	57
Required Hospitalization	1
Deaths	0
Maui County	
Total Cases	367
Released from Isolation†	223
Required Hospitalization	47
Deaths	9
HI Residents diagnosed outside of HI	26
County Pending	0

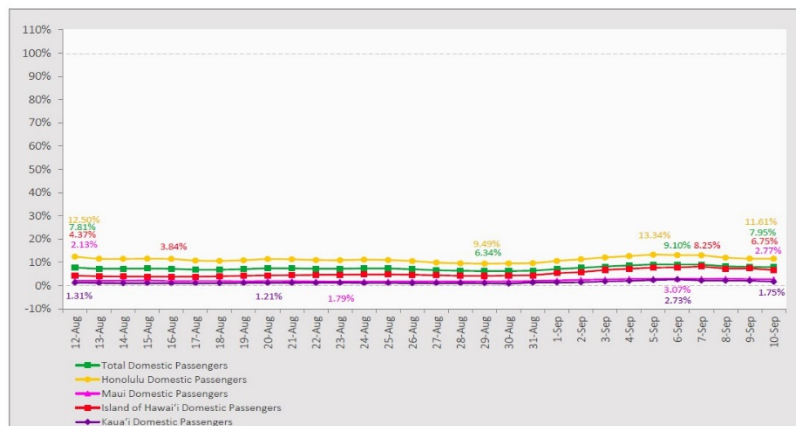
\*includes presumptive and confirmed cases, data are preliminary and subject to change; note that CDC provides case counts according to states of residence.

†Isolation should be maintained until at least 3 days (72 hours) after resolution of fever and myalgia without the use of antipyretics OR at least 7 days have passed since symptom onset, whichever is longer.

## 7-Day Domestic by Island Moving Average Daily Passenger Volume

2020 Volume as Percentage of 2019 Volume

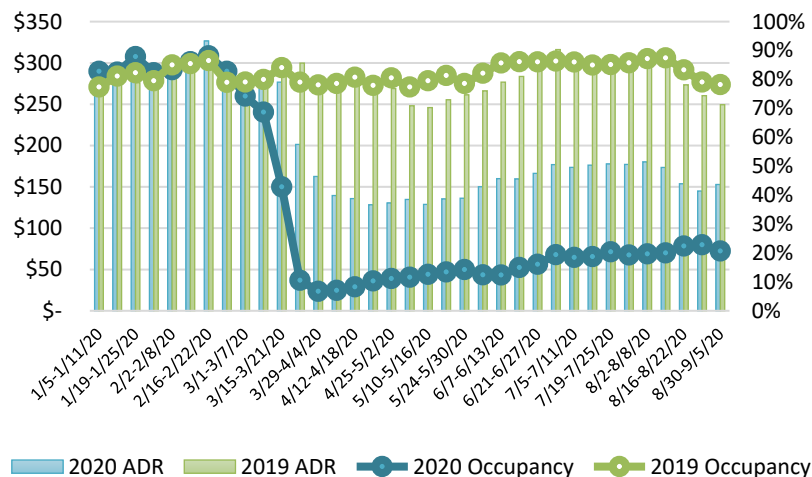
Through September 10, 2020



Source: HVCB analysis based on data from DBEDT

Note: Passenger volume figures include both visitors and residents.

## State of Hawai'i Hotel Performance by Week - 2020 vs 2019



Source: STR, Inc. © Copyright 2020 Hawai'i Tourism Authority

## Hawaii Hotel Performance Info:

For the week of August 30 – September 5, 2020

	Occupancy	ADR	RevPAR
State of Hawaii	20.7%	\$ 152.88	\$ 31.58
Oahu	24.4%	\$ 152.91	\$ 37.27
Maui County	13.7%	\$ 179.66	\$ 24.66
Kauai County	15.0%	\$ 147.57	\$ 22.11
Island of Hawaii	21.9%	\$ 126.37	\$ 27.65

## Domestic by Island Month-to-Date and Year-to-Date Daily Passenger Volume

2020 Volume versus 2019 Volume

Through September 10, 2020

September 2020 (Month-to-Date through September 10)

	2020	2019	Volume Change	Percent Change
Honolulu	13,761	108,849	-95,088	-87.4%
Maui County	1,541	50,976	-49,435	-97.0%
Island of Hawai'i	1,457	17,903	-16,447	-91.9%
Kaua'i	296	16,473	-16,177	-98.2%
Total	17,055	194,201	-177,146	-91.2%

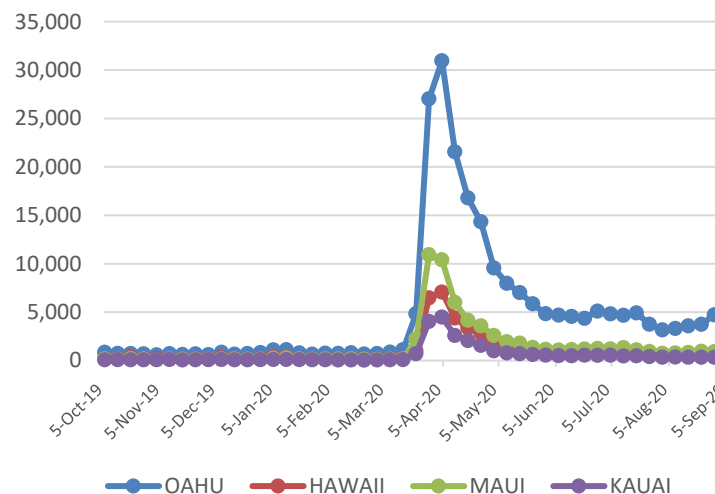
2020 (Year-to-Date through September 10)

	2020	2019	Volume Change	Percent Change
Honolulu	1,139,997	3,252,713	-2,112,716	-65.0%
Maui County	455,117	1,586,800	-1,131,683	-71.3%
Island of Hawai'i	227,237	715,428	-488,192	-68.2%
Kaua'i	151,414	543,210	-391,796	-72.1%
Total	1,973,765	6,098,151	-4,124,387	-67.6%

Source: HVCB analysis based on data from DBEDT

Note: Passenger volume figures include both visitors and residents. Total includes other international passengers. 2020 includes one additional day due to Leap Year (February 29th, 2020).

## 2020 Initial Weekly Unemployment Claims by Island



## Weekly Unemployment Initial Claims: September 5, 2020

State of Hawaii	7,504
C&C of Oahu	5,394
Hawaii County	737
Maui County	860
Kauai County	376
Agent (filed in Hawaii against another state)	137

## News Highlights

September 11, 2020

**Honolulu Star Advertiser:** [Pearl Hotel Waikiki among four lodges assisting those in need of COVID-19 isolation](#)

**KITV4:** [Four hotels on Oahu are stepping up to help people with COVID-19](#)

**KHON2:** [Pearl Hotel offers tour of quarantine rooms](#)

**KHON2:** [Oahu launches virtual dashboard to show how COVID-19 funds are being spent](#)

**Honolulu Civil Beat:** [How Oahu's COVID-19 Park And Beach Restrictions Are Hurting Families](#)

**Big Island Now:** [Kona Man Gets Top Job at Hawaii Tourism Authority](#)

**Hawaii Tribune-Herald:** [DOH: COVID-19 case numbers appear to be declining](#)

**Maui Now:** [Schatz: VA Health Team Mobilized, Heading To Hilo As Early As Today](#)

## Helpful Resources

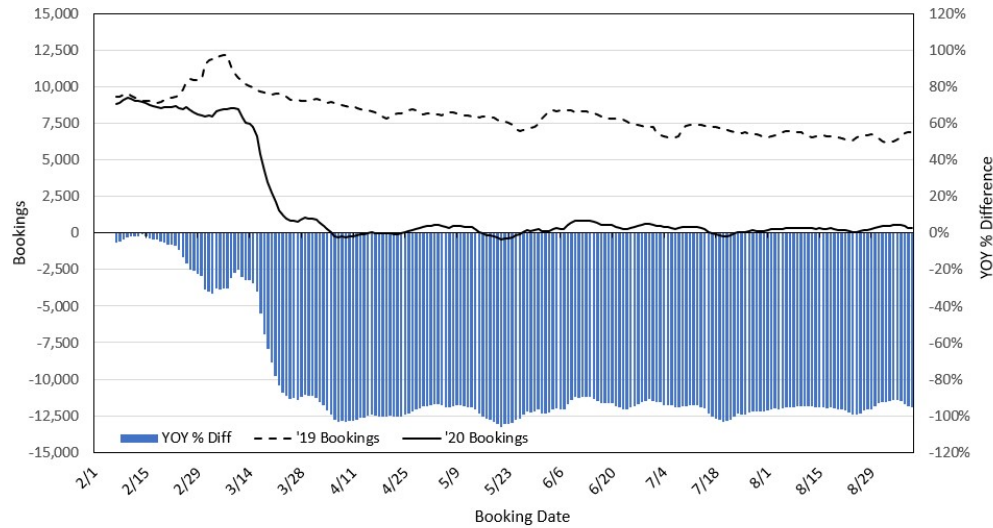
**Department of Health**  
<https://hawaiicovid19.com/>

**Department of Health**  
<https://health.hawaii.gov/docd/advisories/novel-coronavirus-2019>

**Dept. of Business, Economic Development & Tourism**  
<https://dbedt.hawaii.gov/economic/covid19/>

**Department of Transportation**  
<https://hidot.hawaii.gov/coronavirus/>

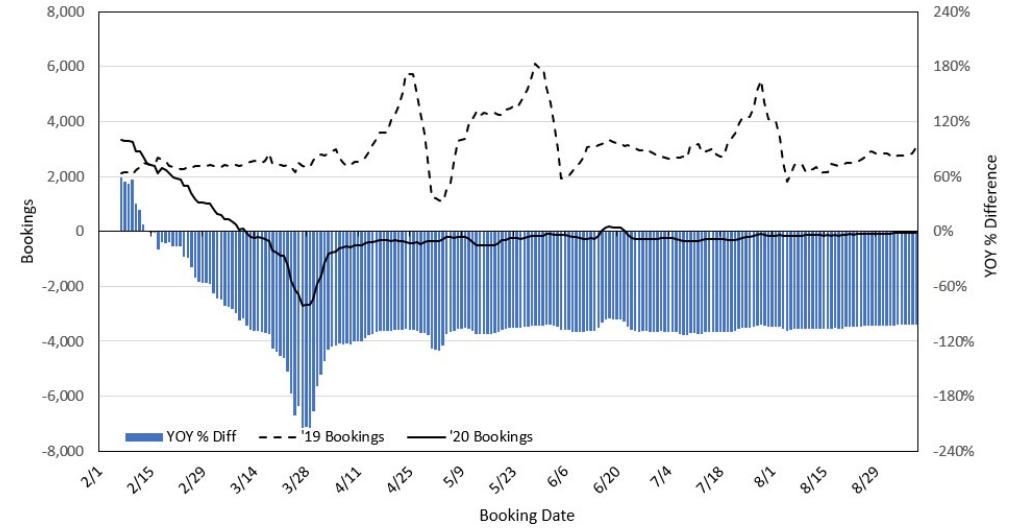
### Travel Agency Bookings to Hawaii for Future Arrivals\* Based on a 7-day Moving Average, 2020 vs 2019 U.S.



\*Future Arrivals refers to all arrivals that are 'future' relative to the referenced booking date.  
Source: Global Agency Pro

Update: Sep 9, 2020

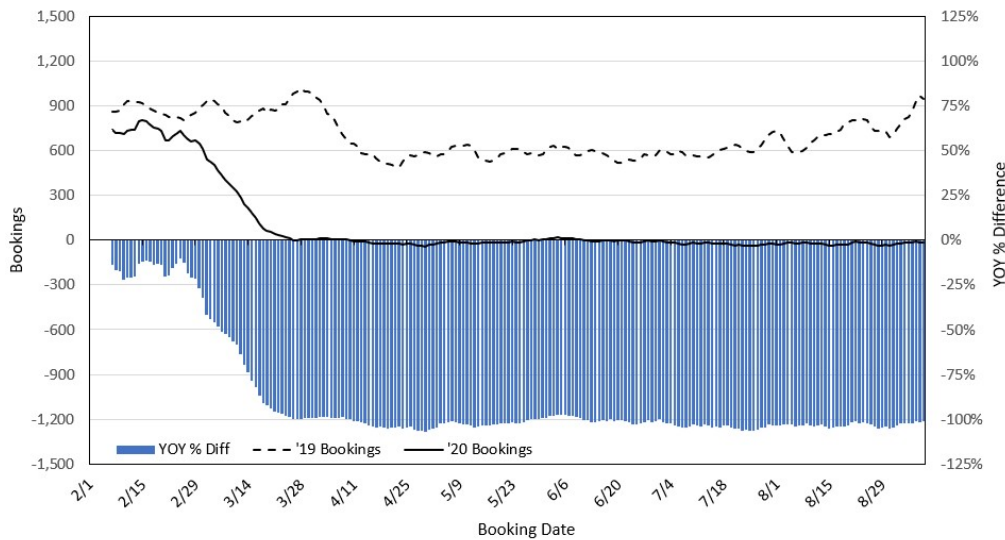
### Travel Agency Bookings to Hawaii for Future Arrivals\* Based on a 7-day Moving Average, 2020 vs 2019 Japan



\*Future Arrivals refers to all arrivals that are 'future' relative to the referenced booking date.  
Source: Global Agency Pro

Update: Sep 9, 2020

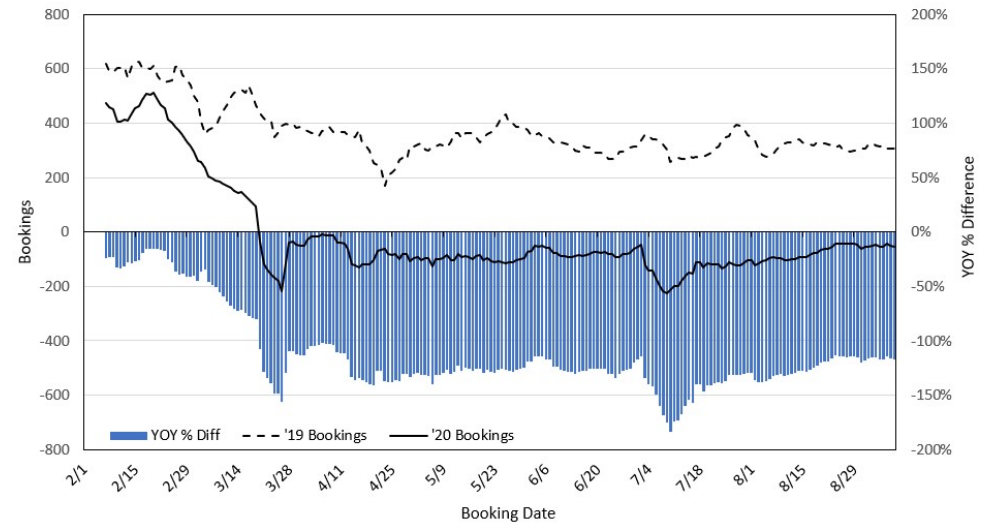
### Travel Agency Bookings to Hawaii for Future Arrivals\* Based on a 7-day Moving Average, 2020 vs 2019 Canada



\*Future Arrivals refers to all arrivals that are 'future' relative to the referenced booking date.  
Source: Global Agency Pro

Update: Sep 9, 2020

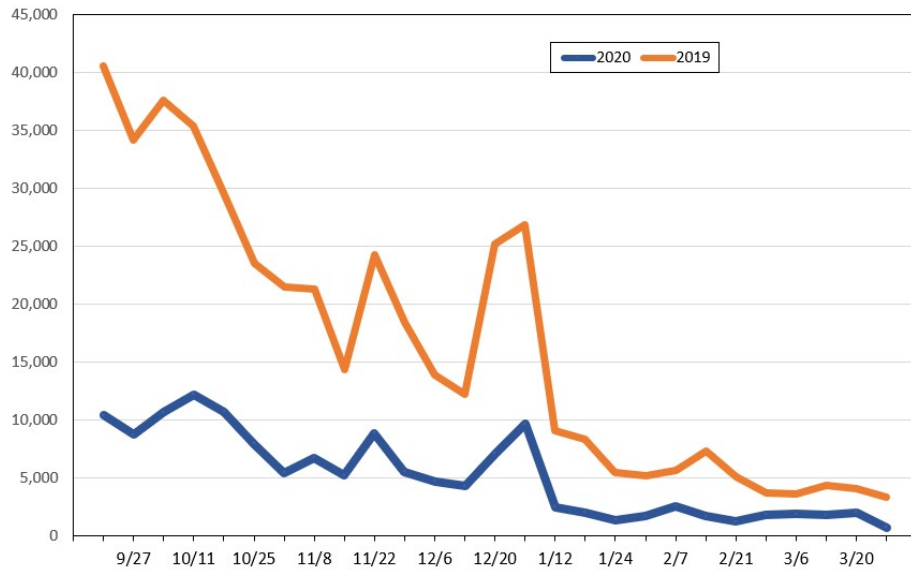
### Travel Agency Bookings to Hawaii for Future Arrivals\* Based on a 7-day Moving Average, 2020 vs 2019 Australia



\*Future Arrivals refers to all arrivals that are 'future' relative to the referenced booking date.  
Source: Global Agency Pro

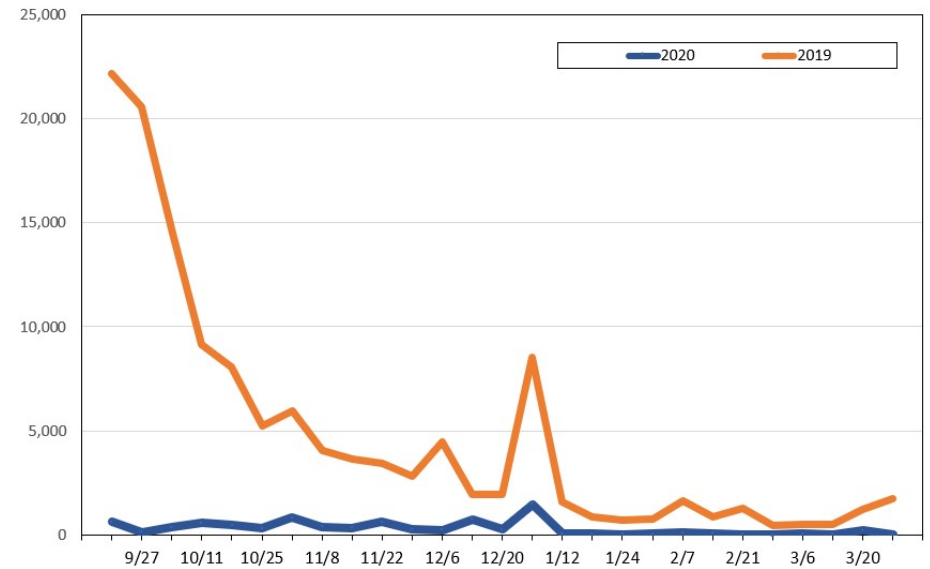
Update: Sep 9, 2020

**Travel Agency Weekly Bookings for Future Travel to Hawai'i as of September 9, 2020**  
U.S.



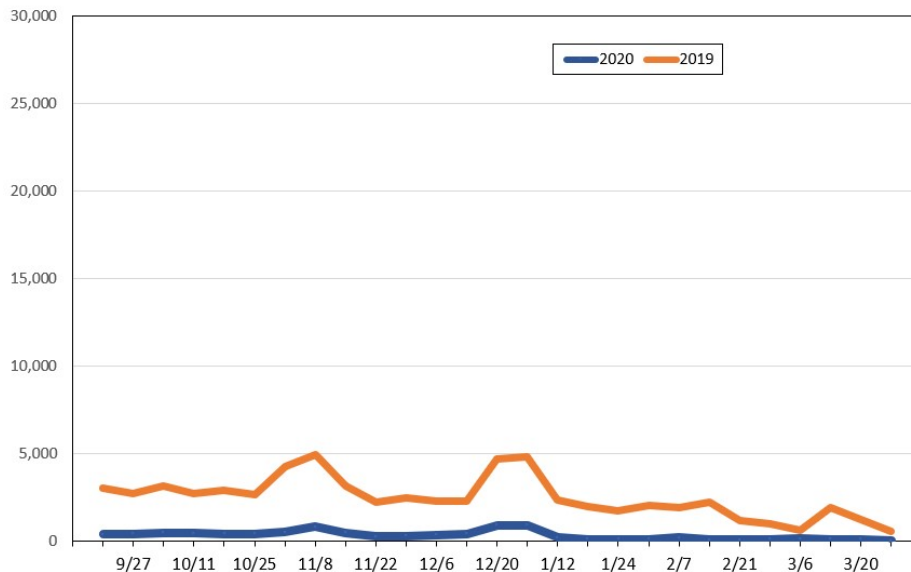
Source: Global Agency Pro, as of September 9, 2020

**Travel Agency Weekly Bookings for Future Travel to Hawai'i as of September 9, 2020**  
Japan



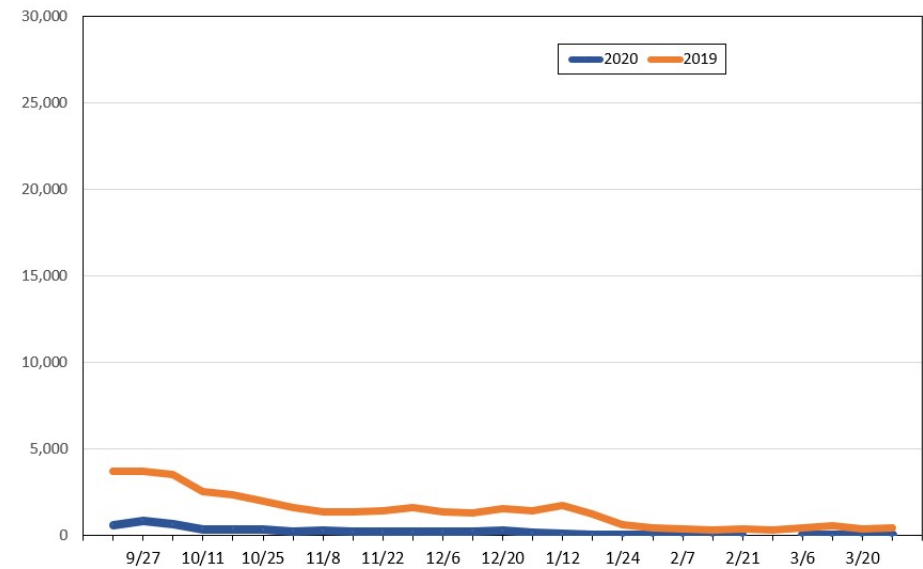
Source: Global Agency Pro, as of September 9, 2020

**Travel Agency Weekly Bookings for Future Travel to Hawai'i as of September 9, 2020**  
Canada



Source: Global Agency Pro, as of September 9, 2020

**Travel Agency Weekly Bookings for Future Travel to Hawai'i as of September 9, 2020**  
Australia



Source: Global Agency Pro, as of September 9, 2020