

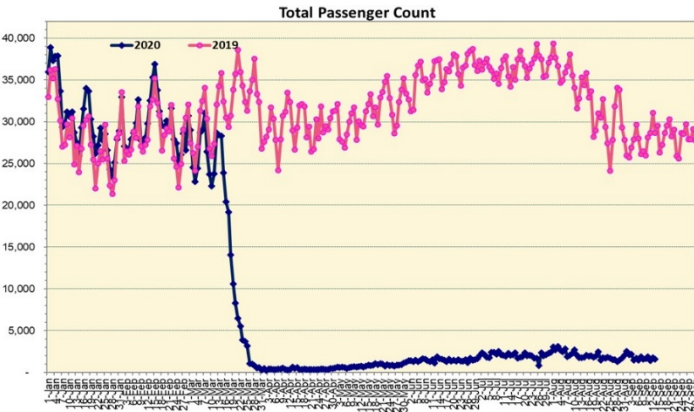
# HTA COVID-19 UPDATE

(Issued: 9/14/20 @ 3:30pm)

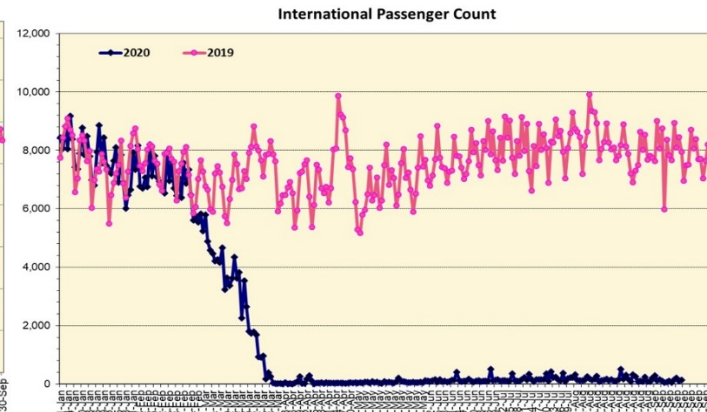
## Novel Coronavirus in Hawaii

COVID-19 Positive\* Cases

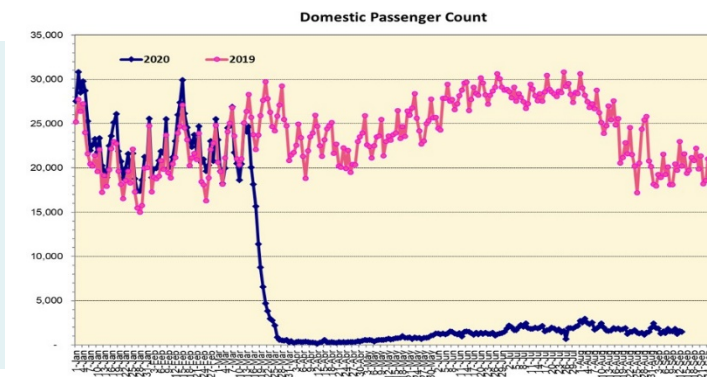
Cumulative totals as of 12:00 noon on September 14, 2020



Note: Excludes flights from Canada



Note: Excludes flights from Canada



### Daily Passenger Count Table

09/13/2020	Domestic	International	Total
Oahu	1208	103	1311
Maui	130		130
Island of Hawaii	96		96
Kauai	35		35
State	1469	103	1572

Market Impact Update: <https://www.dropbox.com/09/14/20 HTA COVID19 Update>

09/13/20 Hawaii Passenger Trans-Pacific Arrivals by Air	Honolulu (HNL)	Kahului (OGG)	Kona (KOA)	Lihue (LIH)	Grand Total
Airline Crew	210	22	20	7	259
Essential Worker	140	24	20	5	189
Honeymoon	3	0	0	0	3
Intended Resident	76	13	10	8	107
Military or Federal Government	115	1	0	3	119
Other	69	12	4	1	86
Other Business	64	34	12	11	121
Pleasure/Vacation	38	14	15	2	69
Returning Resident	489	64	63	15	631
To Attend School	20	0	1	1	22
Visiting Friends or Relatives	196	26	32	13	267
Transit	N/A	N/A	N/A	N/A	N/A
<b>Grand Total</b>	<b>1,420</b>	<b>210</b>	<b>177</b>	<b>66</b>	<b>1,873</b>

Source: Safe Travels program developed by the State of Hawaii Office of Enterprise Technology Services

Note: The data is preliminary and subject to change

Statewide	Total
Total Cases	10779 (80 new)
Released from Isolation†	3693
Required Hospitalization	638
Deaths	99
BY COUNTY	Total
Hawaii County	
Total Cases	594
Released from Isolation†	320
Required Hospitalization	24
Deaths	3
Honolulu County	
Total Cases	9723
Released from Isolation†	3080
Required Hospitalization	564
Deaths	86
Kauai County	
Total Cases	58
Released from Isolation†	57
Required Hospitalization	1
Deaths	0
Maui County	
Total Cases	378
Released from Isolation†	236
Required Hospitalization	47
Deaths	9
HI Residents diagnosed outside of HI	26
County Pending	0

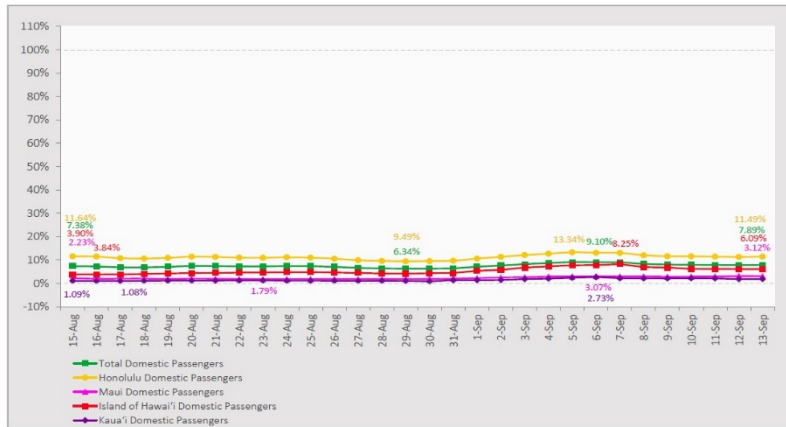
\*includes presumptive and confirmed cases, data are preliminary and subject to change; note that CDC provides case counts according to states of residence.

†Isolation should be maintained until at least 3 days (72 hours) after resolution of fever and myalgia without the use of antipyretics OR at least 7 days have passed since symptom onset, whichever is longer.

## 7-Day Domestic by Island Moving Average Daily Passenger Volume

2020 Volume as Percentage of 2019 Volume

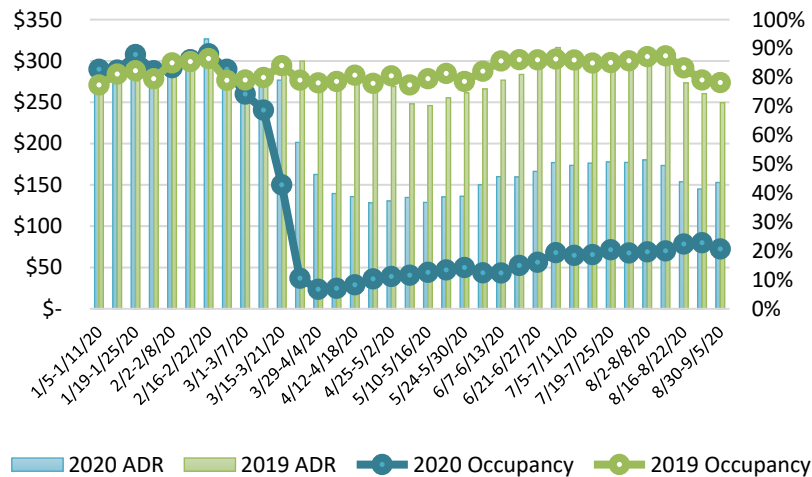
Through September 13, 2020



Source: HVCB analysis based on data from DBEDT

Note: Passenger volume figures include both visitors and residents.

## State of Hawai'i Hotel Performance by Week - 2020 vs 2019



Source: STR, Inc. © Copyright 2020 Hawai'i Tourism Authority

## Hawaii Hotel Performance Info:

For the week of August 30 – September 5, 2020

	Occupancy	ADR	RevPAR
<b>State of Hawaii</b>	20.7%	\$ 152.88	\$ 31.58
<b>Oahu</b>	24.4%	\$ 152.91	\$ 37.27
<b>Maui County</b>	13.7%	\$ 179.66	\$ 24.66
<b>Kauai County</b>	15.0%	\$ 147.57	\$ 22.11
<b>Island of Hawaii</b>	21.9%	\$ 126.37	\$ 27.65

## Domestic by Island Month-to-Date and Year-to-Date Daily Passenger Volume

2020 Volume versus 2019 Volume

Through September 13, 2020

September 2020 (Month-to-Date through September 13)

	2020	2019	Volume Change	Percent Change
Honolulu	17,174	140,594	-123,420	-87.8%
Maui County	2,061	66,714	-64,653	-96.9%
Island of Hawai'i	1,704	23,304	-21,600	-92.7%
Kaua'i	455	21,833	-21,378	-97.9%
<b>Total</b>	<b>21,394</b>	<b>252,445</b>	<b>-231,051</b>	<b>-91.5%</b>

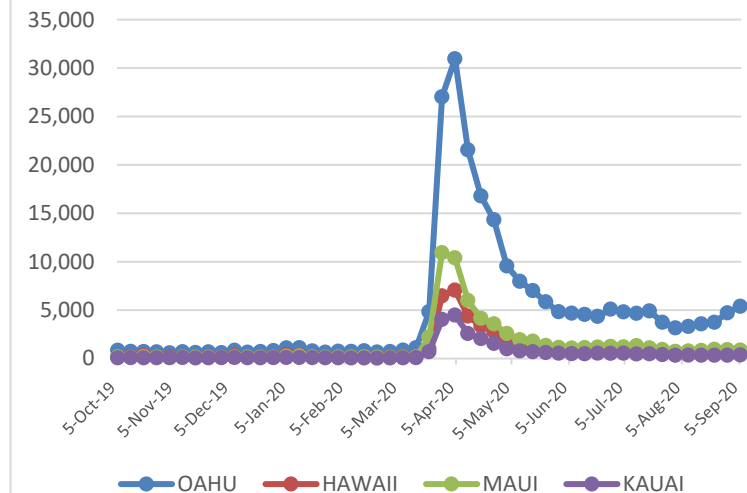
2020 (Year-to-Date through September 13)

	2020	2019	Volume Change	Percent Change
Honolulu	1,143,410	3,284,458	-2,141,048	-65.2%
Maui County	455,637	1,602,538	-1,146,901	-71.6%
Island of Hawai'i	227,484	720,829	-493,345	-68.4%
Kaua'i	151,573	548,570	-396,997	-72.4%
<b>Total</b>	<b>1,978,104</b>	<b>6,156,395</b>	<b>-4,178,292</b>	<b>-67.9%</b>

Source: HVCB analysis based on data from DBEDT

Note: Passenger volume figures include both visitors and residents. Total includes other international passengers. 2020 includes one additional day due to Leap Year (February 29th, 2020).

## 2020 Initial Weekly Unemployment Claims by Island



## Weekly Unemployment Initial Claims: September 5, 2020

<b>State of Hawaii</b>	7,504
<b>C&amp;C of Oahu</b>	5,394
<b>Hawaii County</b>	737
<b>Maui County</b>	860
<b>Kauai County</b>	376
<b>Agent (filed in Hawaii against another state)</b>	137

## News Highlights

September 14, 2020

**Hawaii News Now:** [From trips to weddings and other big plans, 2020 has forced cancellations unlike ever before](#)

**Honolulu Star-Advertiser:** [Editorial: A new tourism chief](#)

**KITV4:** [COVID-19 risk linked to restaurant dining: CDC study](#)

**KITV4:** [Local businesses continue to struggle during second stay at home order](#)

**West Hawaii Today:** [COVID-19 survivors see flaws in system: Mayor thinks central command post will improve response](#)

**West Hawaii Today:** [Green tests positive for COVID-19; Kohala Hospital patients, employees awaiting results](#)

**West Hawaii Today:** [Small Business Matters: Up to \\$10,000 in aid available for businesses in Hawaii County: APPLY NOW!](#)

**Honolulu Magazine:** [So Much for Social Distancing: Honolulu City Buses are Still Crowded During Quarantine](#)

## Helpful Resources

**Department of Health**

<https://hawaiicovid19.com/>

**Department of Health**

<https://health.hawaii.gov/docd/advisories/novel-coronavirus-2019>

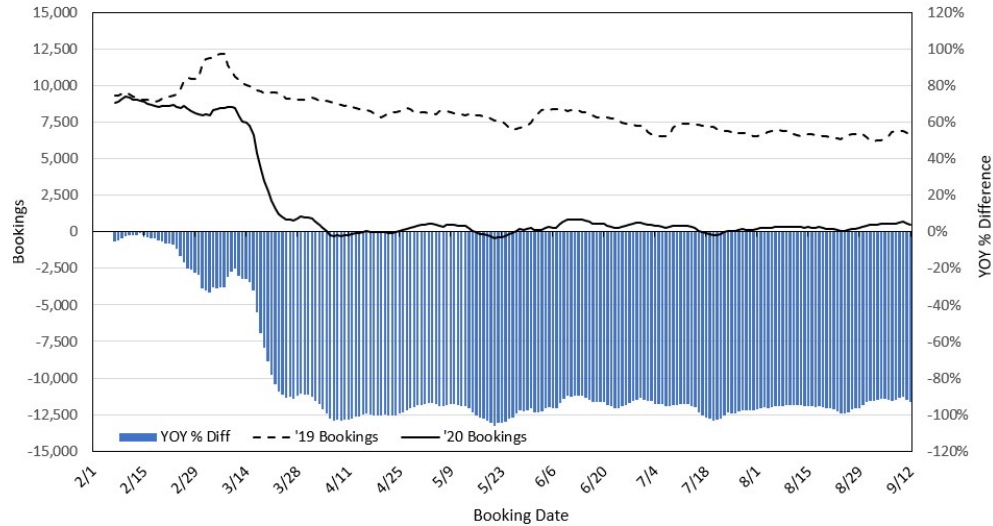
**Dept. of Business, Economic Development & Tourism**

<https://dbedt.hawaii.gov/economic/covid19/>

**Department of Transportation**

<https://hidot.hawaii.gov/coronavirus/>

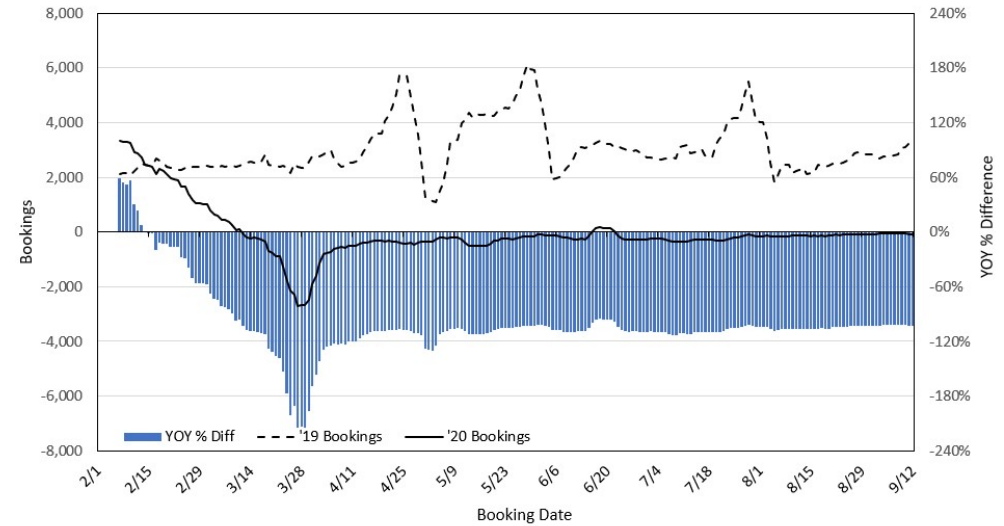
### Travel Agency Bookings to Hawaii for Future Arrivals\* Based on a 7-day Moving Average, 2020 vs 2019 U.S.



\*Future Arrivals refers to all arrivals that are 'future' relative to the referenced booking date.  
Source: Global Agency Pro

Update: Sep 12, 2020

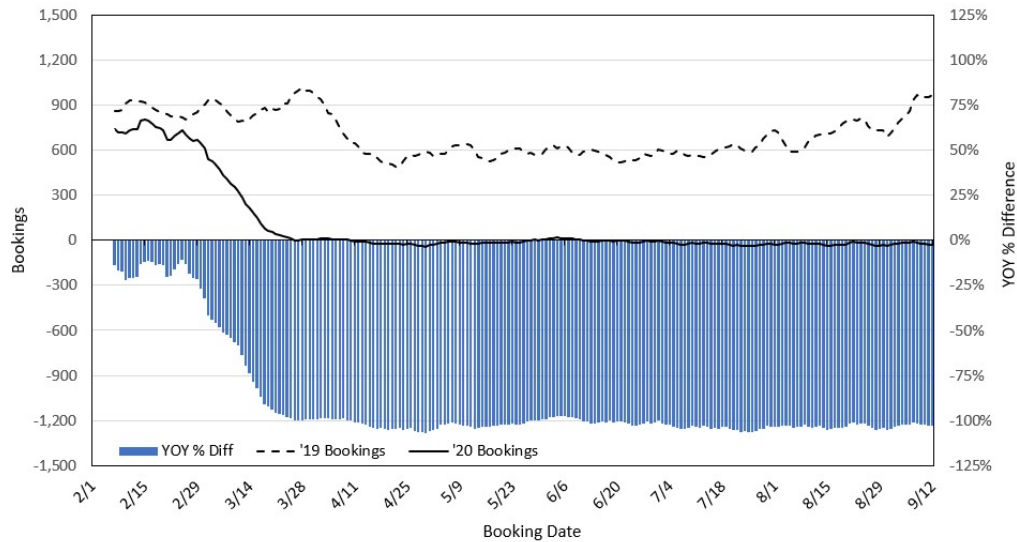
### Travel Agency Bookings to Hawaii for Future Arrivals\* Based on a 7-day Moving Average, 2020 vs 2019 Japan



\*Future Arrivals refers to all arrivals that are 'future' relative to the referenced booking date.  
Source: Global Agency Pro

Update: Sep 12, 2020

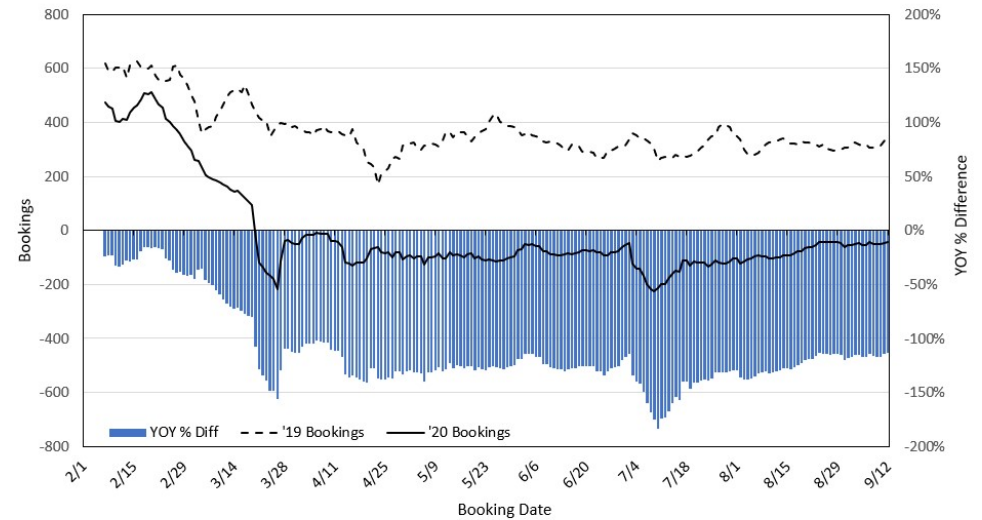
### Travel Agency Bookings to Hawaii for Future Arrivals\* Based on a 7-day Moving Average, 2020 vs 2019 Canada



\*Future Arrivals refers to all arrivals that are 'future' relative to the referenced booking date.  
Source: Global Agency Pro

Update: Sep 12, 2020

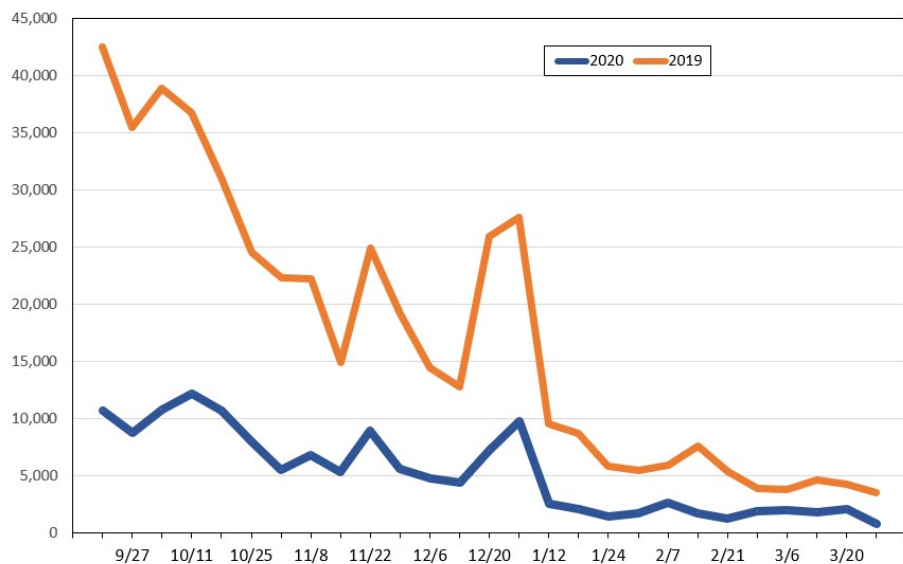
### Travel Agency Bookings to Hawaii for Future Arrivals\* Based on a 7-day Moving Average, 2020 vs 2019 Australia



\*Future Arrivals refers to all arrivals that are 'future' relative to the referenced booking date.  
Source: Global Agency Pro

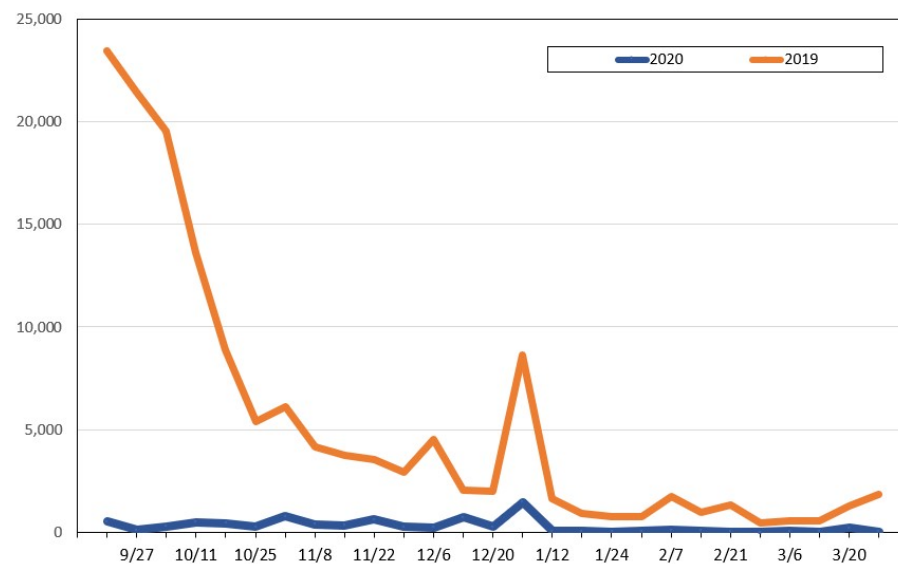
Update: Sep 12, 2020

**Travel Agency Weekly Bookings for Future Travel to Hawai'i as of September 12, 2020**  
**U.S.**



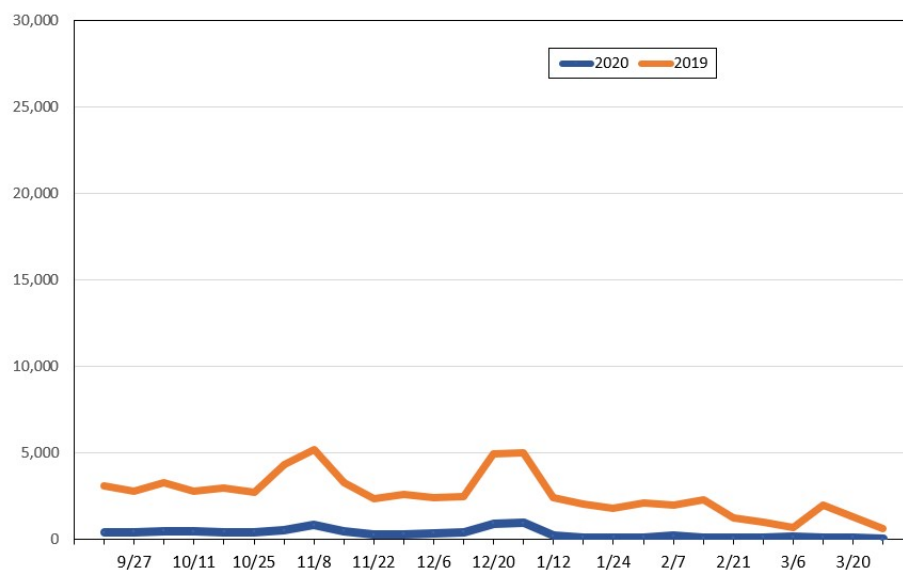
Source: Global Agency Pro, as of September 12, 2020

**Travel Agency Weekly Bookings for Future Travel to Hawai'i as of September 12, 2020**  
**Japan**



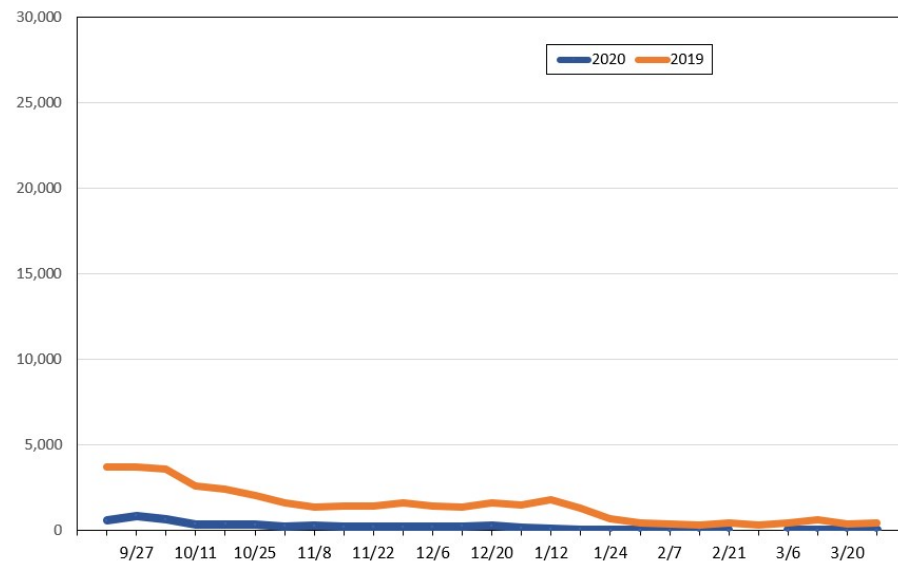
Source: Global Agency Pro, as of September 12, 2020

**Travel Agency Weekly Bookings for Future Travel to Hawai'i as of September 12, 2020**  
**Canada**



Source: Global Agency Pro, as of September 12, 2020

**Travel Agency Weekly Bookings for Future Travel to Hawai'i as of September 12, 2020**  
**Australia**



Source: Global Agency Pro, as of September 12, 2020