

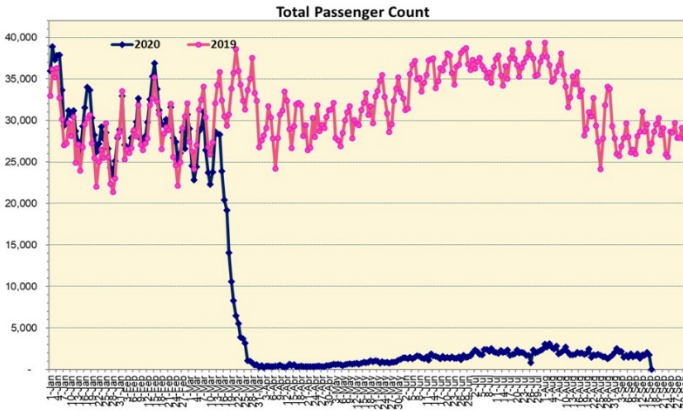
HTA COVID-19 UPDATE

(Issued: 9/16/20 @ 4:30pm)

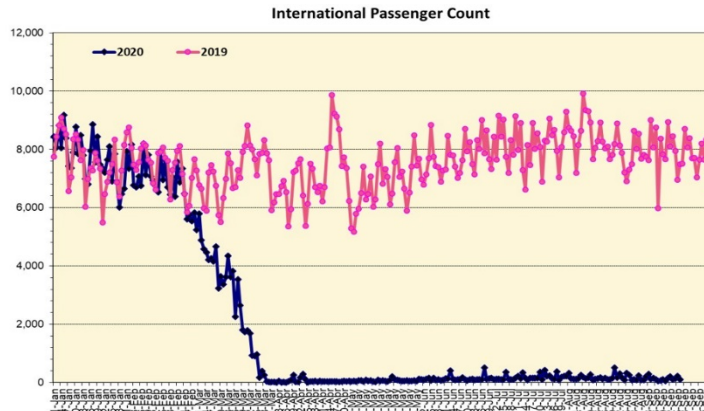
Novel Coronavirus in Hawaii

COVID-19 Positive* Cases

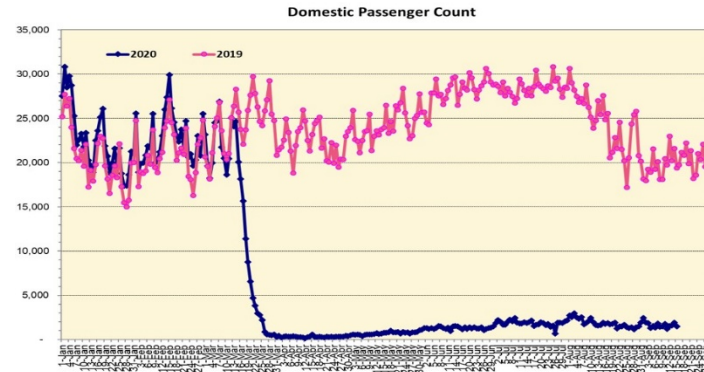
Cumulative totals as of 12:00 noon on September 16, 2020



Note: Excludes flights from Canada



Note: Excludes flights from Canada



Daily Passenger Count Table

09/15/2020	Domestic	International	Total
Oahu	1223	220	1443
Maui	125		125
Island of Hawaii	159		159
Kauai	0		0
State	1507	220	1727

Market Impact Update: <https://www.dropbox.com/09/16/20 HTA COVID19 Update>

09/15/20 Hawaii Passenger Trans-Pacific Arrivals by Air	Honolulu (HNL)	Kahului (OGG)	Kona (KOA)	Lihue (LIH)	Grand Total
Airline Crew	229	19	11	1	260
Essential Worker	94	22	13	3	132
Honeymoon	1	4	0	0	5
Incentive Trip	1	0	2	0	3
Intended Resident	137	27	31	6	201
Military or Federal Government	130	2	3	0	135
Other	108	3	9	1	121
Other Business	56	14	12	3	85
Pleasure/Vacation	59	20	26	1	106
Returning Resident	540	88	52	5	685
To Attend School	17	0	1	0	18
To Get Married	2	0	0	0	2
Visiting Friends or Relatives	232	14	27	4	277
(blank)	0	0	0	0	0
Transit	N/A	N/A	N/A	N/A	N/A
Grand Total	1,606	213	187	24	2,030

Source: Safe Travels program developed by the State of Hawaii Office of Enterprise Technology Services

Note: The data is preliminary and subject to change

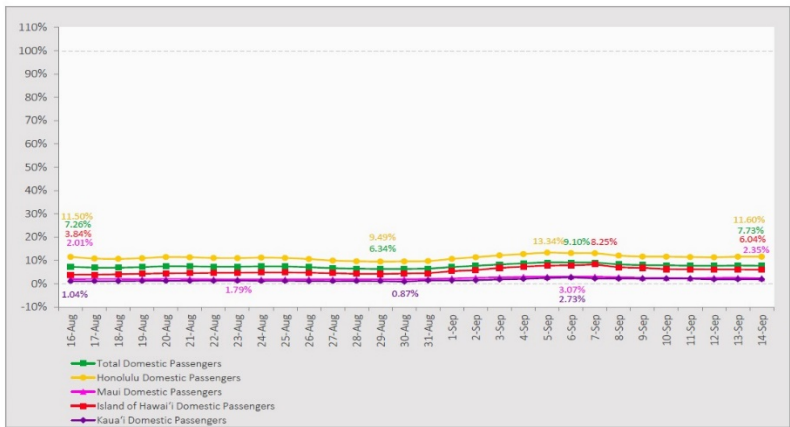
Statewide	Total
Total Cases	10946 (102 new)
Released from Isolation†	4105
Required Hospitalization	667
Deaths	103
BY COUNTY	Total
Hawaii County	
Total Cases	603
Released from Isolation†	394
Required Hospitalization	27
Deaths	3
Honolulu County	
Total Cases	9879
Released from Isolation†	3412
Required Hospitalization	590
Deaths	90
Kauai County	
Total Cases	58
Released from Isolation†	57
Required Hospitalization	1
Deaths	0
Maui County	
Total Cases	378
Released from Isolation†	242
Required Hospitalization	47
Deaths	9
HI Residents diagnosed outside of HI	28
County Pending	0

*includes presumptive and confirmed cases, data are preliminary and subject to change; note that CDC provides case counts according to states of residence.

†Isolation should be maintained until at least 3 days (72 hours) after resolution of fever and myalgia without the use of antipyretics OR at least 7 days have passed since symptom onset, whichever is longer.

7-Day Domestic by Island Moving Average Daily Passenger Volume

2020 Volume as Percentage of 2019 Volume
Through September 14, 2020



Source: HVCB analysis based on data from DBEDT
Note: Passenger volume figures include both visitors and residents.

Domestic by Island Month-to-Date and Year-to-Date Daily Passenger Volume

2020 Volume versus 2019 Volume
Through September 14, 2020

September 2020 (Month-to-Date through September 14)

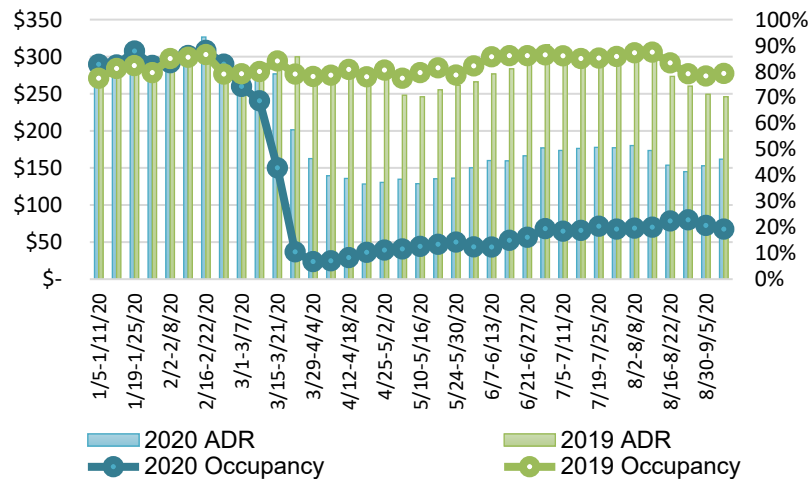
	2020	2019	Volume Change	Percent Change
Honolulu	18,798	152,350	-133,552	-87.7%
Maui County	1,956	73,214	-71,258	-97.3%
Island of Hawai'i	1,843	25,776	-23,933	-92.8%
Kaua'i	505	24,067	-23,562	-97.9%
Total	23,102	275,407	-252,305	-91.6%

2020 (Year-to-Date through September 14)

	2020	2019	Volume Change	Percent Change
Honolulu	1,145,034	3,296,214	-2,151,180	-65.3%
Maui County	455,532	1,609,038	-1,153,506	-71.7%
Island of Hawai'i	227,623	723,301	-495,678	-68.5%
Kaua'i	151,623	550,804	-399,181	-72.5%
Total	1,979,812	6,179,357	-4,199,546	-68.0%

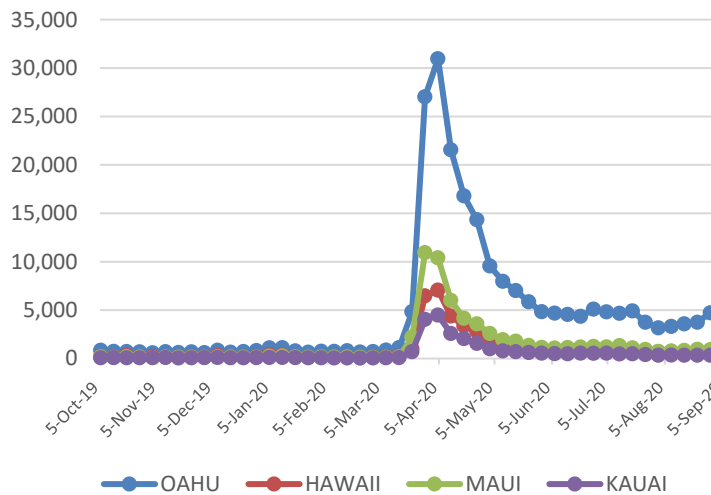
Source: HVCB analysis based on data from DBEDT
Note: Passenger volume figures include both visitors and residents. Total includes other international passengers. 2020 includes one additional day due to Leap Year (February 29th, 2020).

State of Hawai'i Hotel Performance by Week - 2020 vs 2019



Source: STR, Inc. © Copyright 2020 Hawai'i Tourism Authority

2020 Initial Weekly Unemployment Claims by Island



Weekly Unemployment Initial Claims: September 5, 2020

State of Hawaii	7,504
C&C of Oahu	5,394
Hawaii County	737
Maui County	860
Kauai County	376
Agent (filed in Hawaii against another state)	137

Hawaii Hotel Performance Info:

For the week of September 6 – September 12, 2020

	Occupancy	ADR	RevPAR
State of Hawaii	19.3%	\$ 161.81	\$ 31.16
Oahu	21.1%	\$ 159.44	\$ 33.64
Maui County	17.3%	\$ 189.80	\$ 32.74
Kauai County	14.8%	\$ 149.74	\$ 22.13
Island of Hawaii	19.1%	\$ 130.76	\$ 24.94

News Highlights

September 16, 2020

Hawaii News Now: [Facing mounting economic woes, Hawaii to launch pre-travel testing program Oct. 15](#)

Hawaii News Now: [Honolulu's Managing Director explains 'tier plan' for reopening](#)

Hawaii News Now: [Hotel industry pushes Gov. Ige to relaunch trans-Pacific travel no later than mid-October](#)

KITV4: [DOH releases list of care homes where COVID-19 cases have been reported](#)

KHON2: [65% of Hawaii restaurants expect to close in six months, HRA meets with Mayor Caldwell](#)

Pacific Business News: [Hawaii is the state with the most Covid restrictions, report finds](#)

Hawaii Tribune-Herald: [Civil Defense: 2 more COVID-19 deaths of veterans home residents; Big Island death toll now 15](#)

The Garden Island: [Opening the island safely](#)

Travel + Leisure: [Kauai Gets 'Resort Bubble' Program Approval to Allow Quarantined Visitors to Use Facilities](#)

Helpful Resources

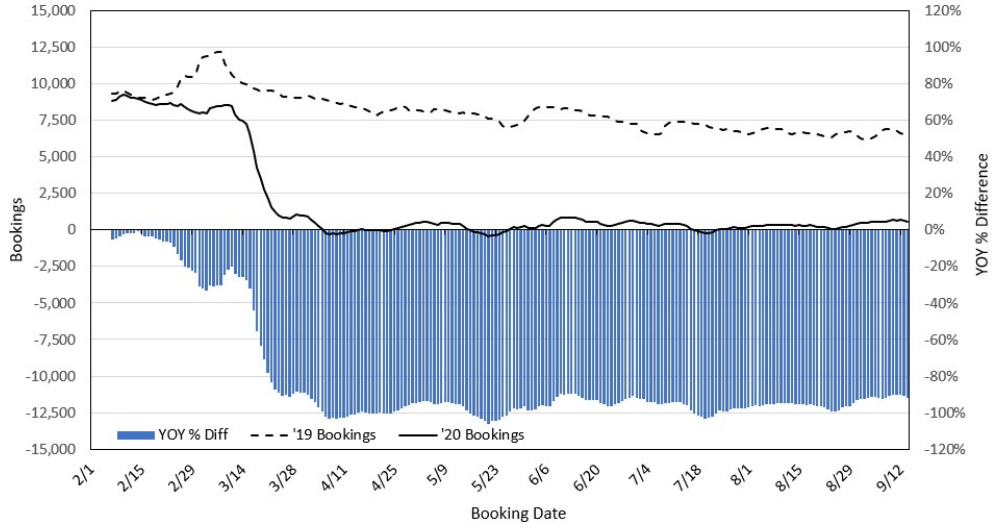
Department of Health
<https://hawaiiocovid19.com/>

Department of Health
<https://health.hawaii.gov/docd/advisories/novel-coronavirus-2019>

Dept. of Business, Economic Development & Tourism
<https://dbedt.hawaii.gov/economic/covid19/>

Department of Transportation
<https://hidot.hawaii.gov/coronavirus/>

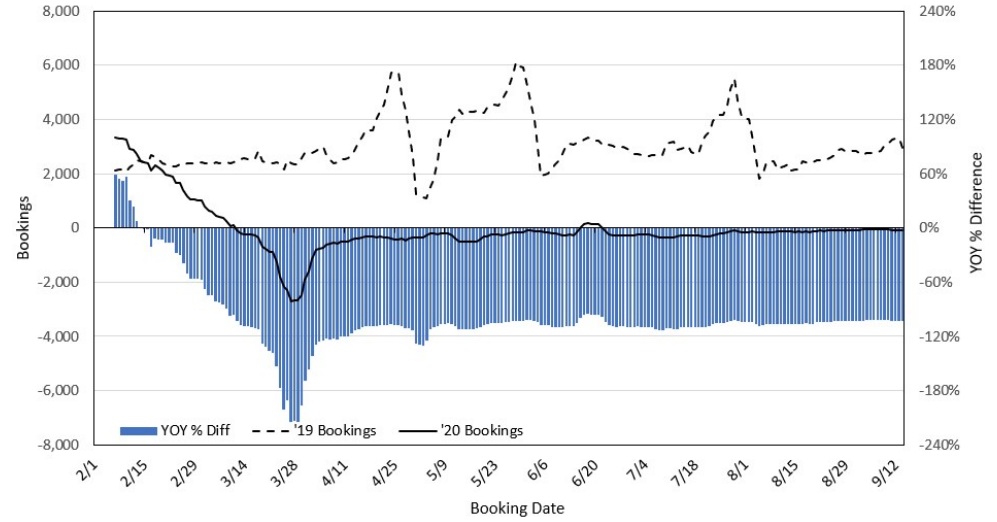
**Travel Agency Bookings to Hawaii for Future Arrivals*
Based on a 7-day Moving Average, 2020 vs 2019
U.S.**



*Future Arrivals refers to all arrivals that are 'future' relative to the referenced booking date.
Source: Global Agency Pro

Update: Sep 14, 2020

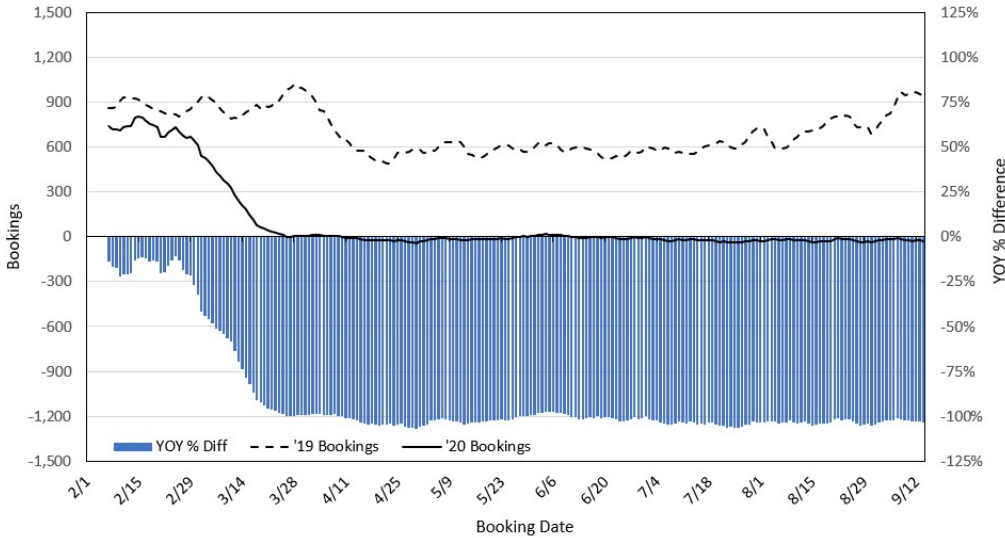
**Travel Agency Bookings to Hawaii for Future Arrivals*
Based on a 7-day Moving Average, 2020 vs 2019
Japan**



*Future Arrivals refers to all arrivals that are 'future' relative to the referenced booking date.
Source: Global Agency Pro

Update: Sep 14, 2020

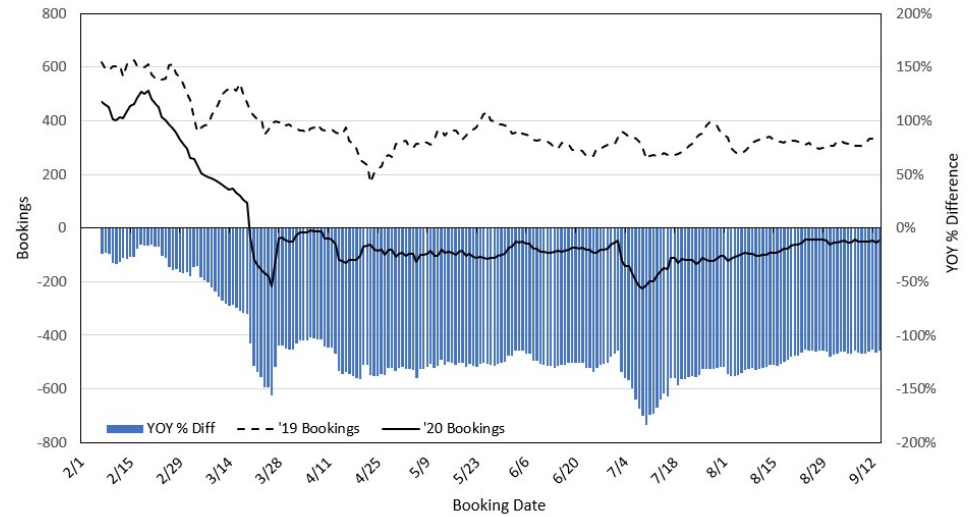
**Travel Agency Bookings to Hawaii for Future Arrivals*
Based on a 7-day Moving Average, 2020 vs 2019
Canada**



*Future Arrivals refers to all arrivals that are 'future' relative to the referenced booking date.
Source: Global Agency Pro

Update: Sep 14, 2020

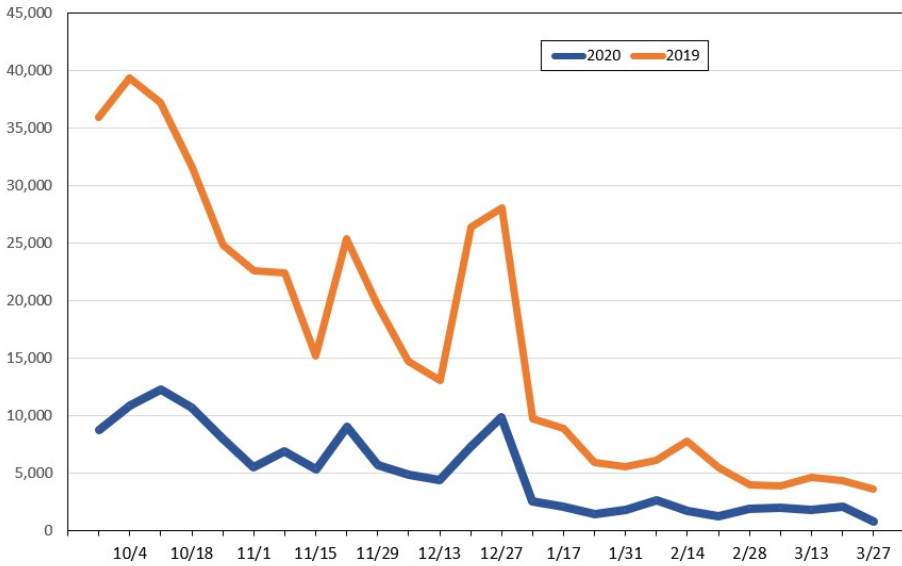
**Travel Agency Bookings to Hawaii for Future Arrivals*
Based on a 7-day Moving Average, 2020 vs 2019
Australia**



*Future Arrivals refers to all arrivals that are 'future' relative to the referenced booking date.
Source: Global Agency Pro

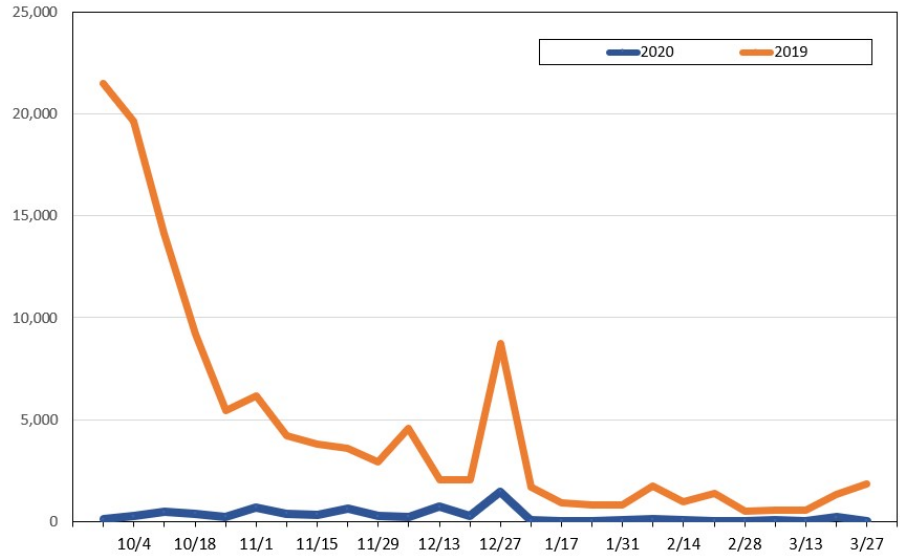
Update: Sep 14, 2020

Travel Agency Weekly Bookings for Future Travel to Hawai'i as of September 14, 2020
U.S.



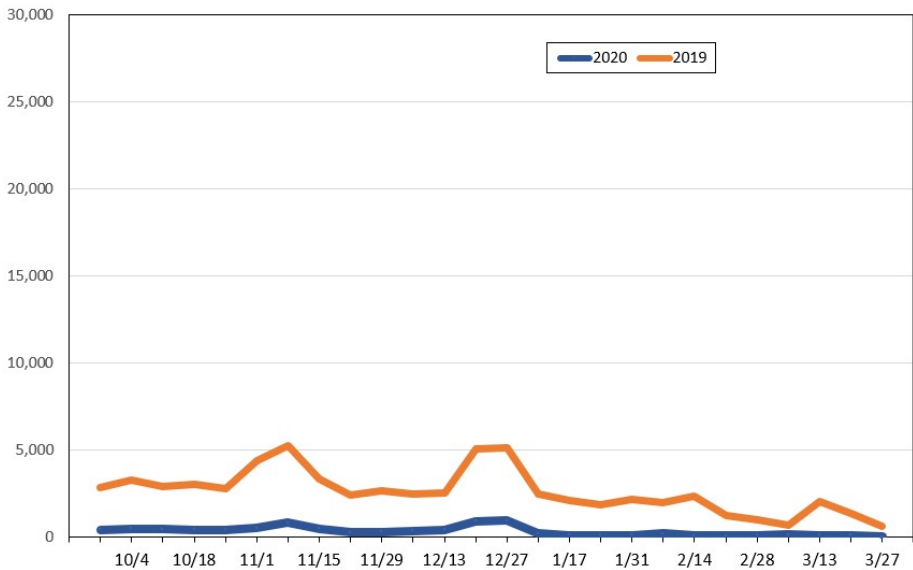
Source: Global Agency Pro, as of September 14, 2020

Travel Agency Weekly Bookings for Future Travel to Hawai'i as of September 14, 2020
Japan



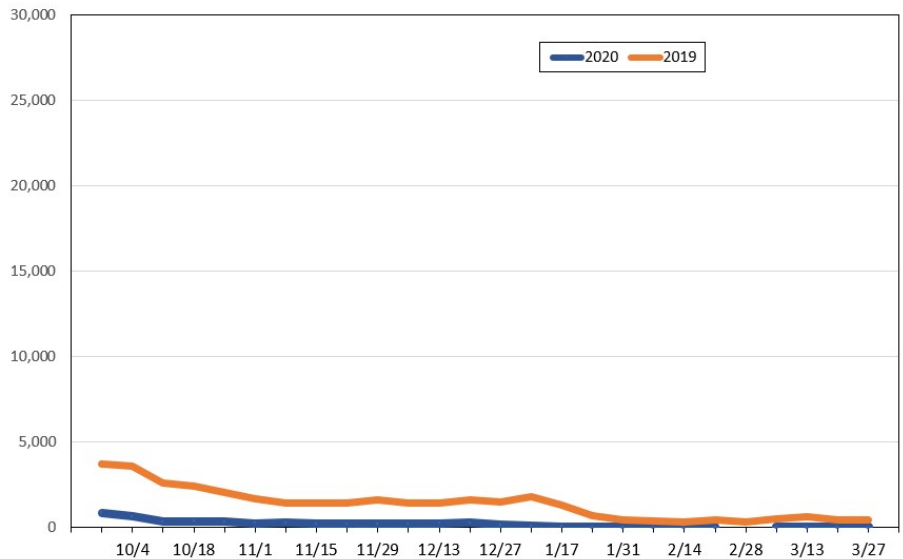
Source: Global Agency Pro, as of September 14, 2020

Travel Agency Weekly Bookings for Future Travel to Hawai'i as of September 14, 2020
Canada



Source: Global Agency Pro, as of September 14, 2020

Travel Agency Weekly Bookings for Future Travel to Hawai'i as of September 14, 2020
Australia



Source: Global Agency Pro, as of September 14, 2020