

# HTA COVID-19 UPDATE

(Issued: 8/10/20 @ 5:00pm)

## Novel Coronavirus in Hawaii

COVID-19 Positive\* Cases

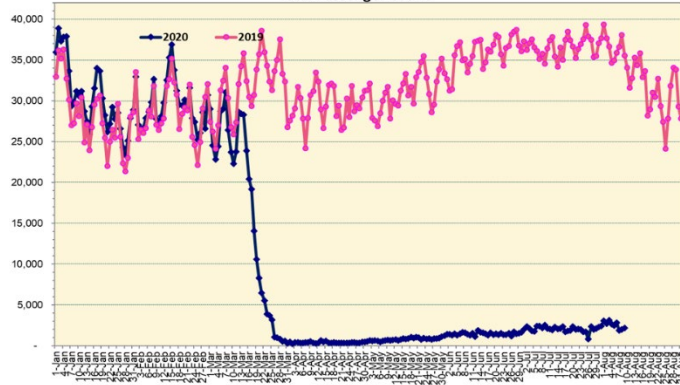
Cumulative totals as of 12:00 noon on August 10, 2020

Statewide	Total
Total Cases	<b>3638</b> (140 new)
Released from Isolation†	1586
Required Hospitalization	242
Deaths	34
BY COUNTY	Total
Hawaii County	
Total Cases	131
Released from Isolation†	117
Required Hospitalization	4
Deaths	0
Honolulu County	
Total Cases	3249
Released from Isolation†	1274
Required Hospitalization	209
Deaths	27
Kauai County	
Total Cases	49
Released from Isolation†	46
Required Hospitalization	1
Deaths	0
Maui County	
Total Cases	186
Released from Isolation†	149
Required Hospitalization	26
Deaths	6
HI Residents diagnosed outside of HI	23
County Pending	0

\*includes presumptive and confirmed cases, data are preliminary and subject to change; note that CDC provides case counts according to states of residence.

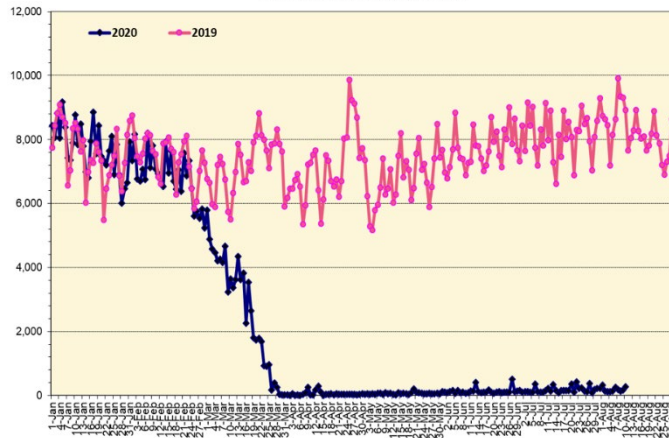
†Isolation should be maintained until at least 3 days (72 hours) after resolution of fever and myalgia without the use of antipyretics OR at least 7 days have passed since symptom onset, whichever is longer.

Total Passenger Count



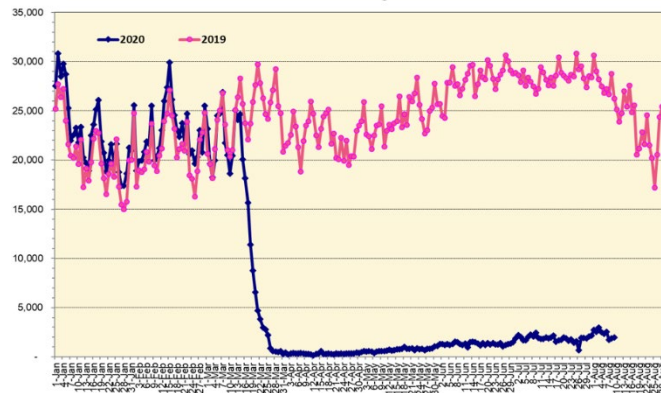
Note: Excludes flights from Canada

International Passenger Count



Note: Excludes flights from Canada

Domestic Passenger Count



### Daily Passenger Count Table

08/09/2020	Domestic	International	Total
Oahu	1669	180	1849
Maui	152		152
Island of Hawaii	133		133
Kauai	38		38
State	1992	180	2172

### 8/10/20 Hawaii Passenger Arrivals by Air Update

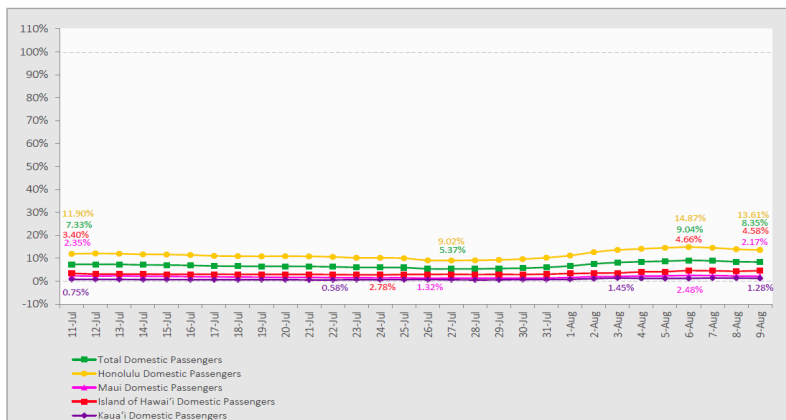
Yesterday, 2563 people arrived in Hawaii. This table shows the number of people who arrived by air from out of state yesterday and does not include interisland travel. This data was collected from the Hawaii DOT new Mandatory Travel Declaration Form.

	Kona	Maui	Oahu	Lihue	Total
Crew	19	32	242	7	300
Transit	2	1	179		182
Military		3	141		144
Exempt			289		289
Relocate to Hawaii	24	14	142	4	184
Returning Resident	69	84	716	6	875
Visitor	65	50	449	25	589
<b>Grand Total</b>	<b>179</b>	<b>184</b>	<b>2158</b>	<b>42</b>	<b>2563</b>
<b>Flights</b>	<b>5</b>	<b>4</b>	<b>23</b>	<b>1</b>	<b>33</b>

Market Impact Update: <https://www.dropbox.com/8/10/20 HTA COVID19 Update>

### 7-Day Domestic by Island Moving Average Daily Passenger Volume

2020 Volume as Percentage of 2019 Volume  
Through August 9, 2020



Source: HVCB analysis based on data from DBEDT  
Note: Passenger volume figures include both visitors and residents.

### Domestic by Island Month-to-Date and Year-to-Date Daily Passenger Volume

2020 Volume versus 2019 Volume  
Through August 9, 2020

August 2020 (Month-to-Date through August 9)

	2020	2019	Volume Change	Percent Change
Honolulu	18,055	130,992	-112,937	-86.2%
Maui County	1,564	69,569	-68,005	-97.8%
Island of Hawai'i	1,359	30,686	-29,327	-95.6%
Kauai	307	21,685	-21,378	-98.6%
<b>Total</b>	<b>21,285</b>	<b>252,932</b>	<b>-231,647</b>	<b>-91.6%</b>

2020 (Year-to-Date through August 9)

	2020	2019	Volume Change	Percent Change
Honolulu	1,095,424	2,853,627	-1,758,203	-61.6%
Maui County	450,846	1,399,914	-949,068	-67.8%
Island of Hawai'i	223,561	642,713	-419,152	-65.2%
Kauai	150,587	482,824	-332,237	-68.8%
<b>Total</b>	<b>1,920,418</b>	<b>5,379,078</b>	<b>-3,458,661</b>	<b>-64.3%</b>

Source: HVCB analysis based on data from DBEDT  
Note: Passenger volume figures include both visitors and residents. Total includes other international passengers. 2020 includes one additional day due to Leap Year (February 29th, 2020).

## News Highlights

August 10, 2020

**KITV4: Health Director:** [Transpacific travel "Needs to be put off for at least a couple of months"](#)

**Honolulu Star-Advertiser:** [Daily visitor arrivals into Hawaii jump to nearly 900 as coronavirus cases surge](#)

**Hawaii Public Radio:** [The Latest: 152 New Cases; Health Director: Expect More Deaths As Surge Continues; 3 Inmates Postive](#)

**Hawaii Tribune-Herald:** [UH-Hilo creates quarantine program for out-of-state students](#)

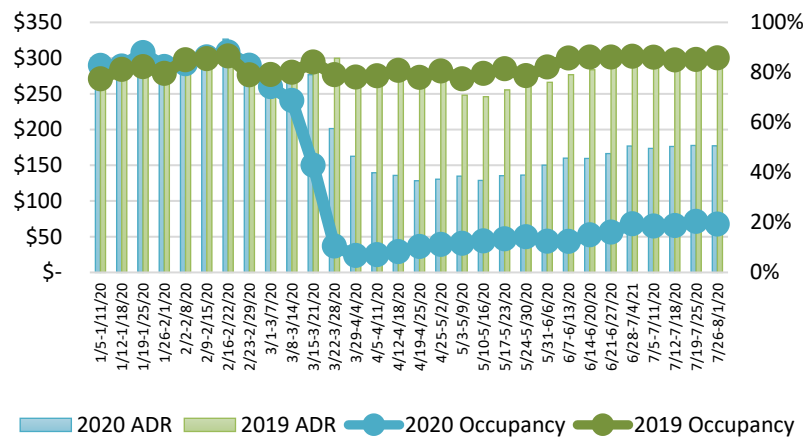
**The Garden Island:** [New case travel-related](#)

**The Garden Island:** [Kauai has learned from others' virus mistakes](#)

**USA Today:** [Hawaii's inter-island quarantine returns Tuesday as state reports 200+ new cases per day](#)

**Forbes:** [Hawaii Travel Update: Inter-Island Quarantine To Be Partially Reinstated Starting Tuesday; Here's What You Need To Know](#)

### State of Hawai'i Hotel Performance by Week - 2020 vs 2019

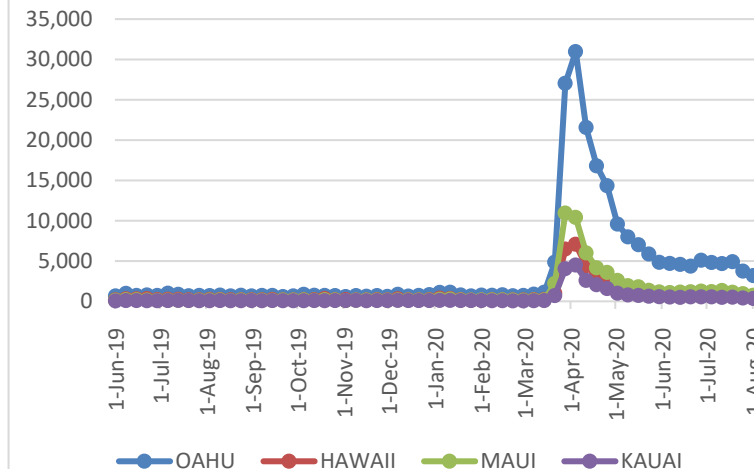


Source: STR, Inc. © Copyright 2020 Hawai'i Tourism Authority

### Hawaii Hotel Performance Info: For the week of July 26 – August 1, 2020

	Occupancy	ADR	RevPAR
<b>State of Hawaii</b>	19.3%	\$ 177.17	\$ 34.17
<b>Oahu</b>	21.4%	\$ 173.13	\$ 37.10
<b>Maui County</b>	9.0%	\$ 233.50	\$ 21.09
<b>Kauai County</b>	22.2%	\$ 197.28	\$ 43.76
<b>Island of Hawaii</b>	26.1%	\$ 142.36	\$ 37.22

### 2020 Initial Weekly Unemployment Claims by Island



### Weekly Unemployment Initial Claims: August 1, 2020

<b>State of Hawaii</b>	5,069
<b>C&amp;C of Oahu</b>	3,166
<b>Hawaii County</b>	703
<b>Maui County</b>	734
<b>Kauai County</b>	339
<b>Agent (filed in Hawaii against another state)</b>	127

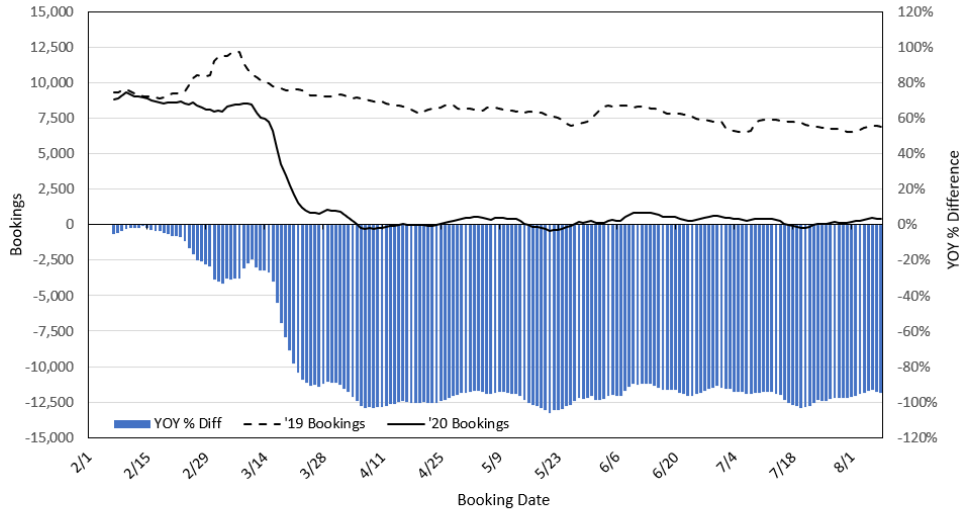
**Helpful Resources**  
Department of Health  
<https://hawaiicovid19.com/>

Department of Health  
<https://health.hawaii.gov/dacd/advisories/novel-coronavirus-2019>

Dept. of Business, Economic Development & Tourism  
<https://dbedt.hawaii.gov/economic/covid19/>

Department of Transportation  
<https://hidot.hawaii.gov/coronavirus/>

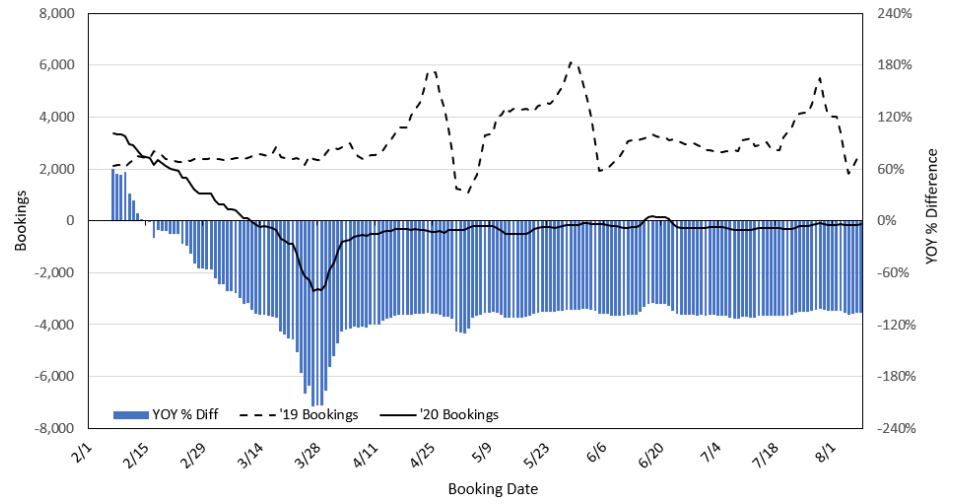
**Travel Agency Bookings to Hawaii for Future Arrivals\***  
**Based on a 7-day Moving Average, 2020 vs 2019**  
**U.S.**



\*Future Arrivals refers to all arrivals that are 'future' relative to the referenced booking date.  
 Source: Global Agency Pro

Update: Aug 8, 2020

**Travel Agency Bookings to Hawaii for Future Arrivals\***  
**Based on a 7-day Moving Average, 2020 vs 2019**  
**Japan**



\*Future Arrivals refers to all arrivals that are 'future' relative to the referenced booking date.  
 Source: Global Agency Pro

Update: Aug 8, 2020

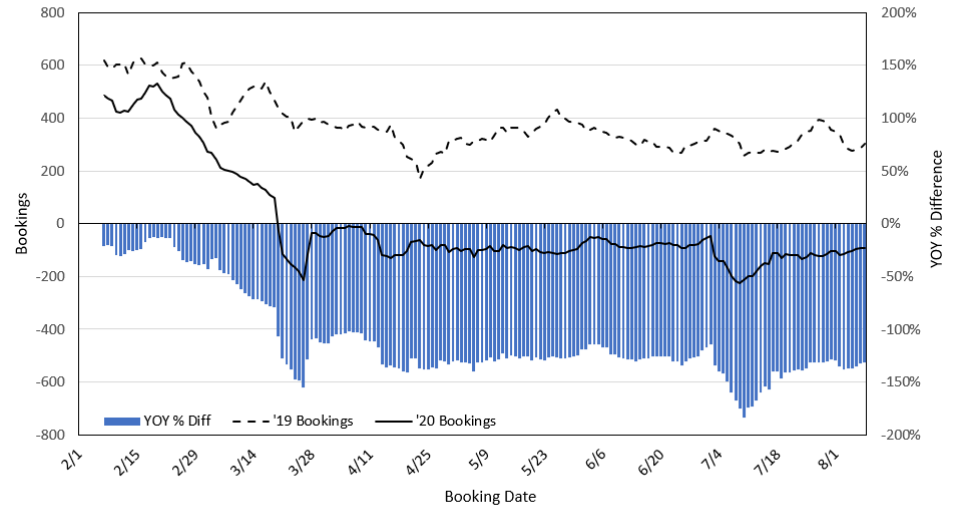
**Travel Agency Bookings to Hawaii for Future Arrivals\***  
**Based on a 7-day Moving Average, 2020 vs 2019**  
**Canada**



\*Future Arrivals refers to all arrivals that are 'future' relative to the referenced booking date.  
 Source: Global Agency Pro

Update: Aug 8, 2020

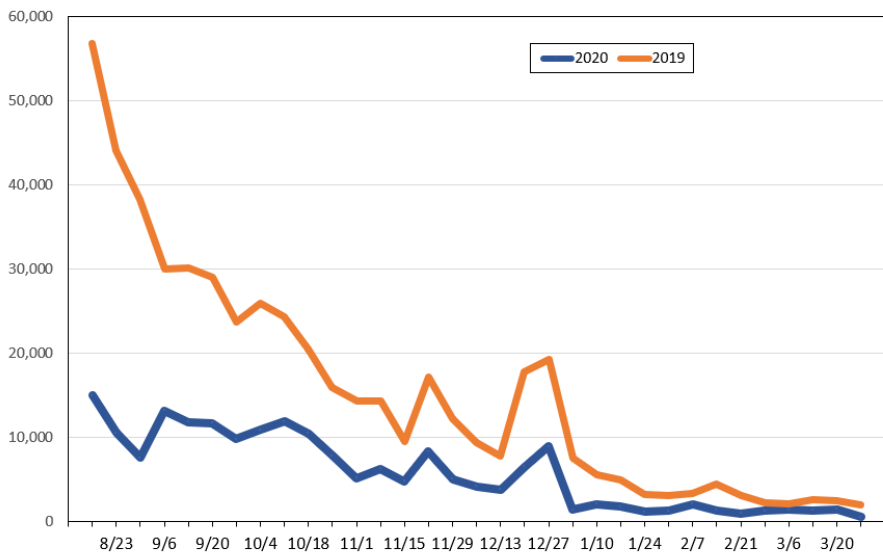
**Travel Agency Bookings to Hawaii for Future Arrivals\***  
**Based on a 7-day Moving Average, 2020 vs 2019**  
**Australia**



\*Future Arrivals refers to all arrivals that are 'future' relative to the referenced booking date.  
 Source: Global Agency Pro

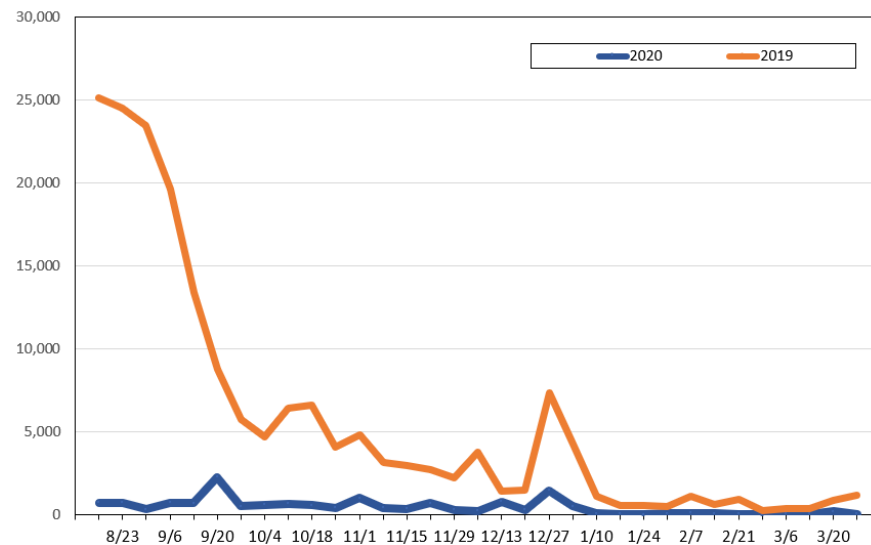
Update: Aug 8, 2020

### Travel Agency Weekly Bookings for Future Travel to Hawai'i as of August 8, 2020 U.S.



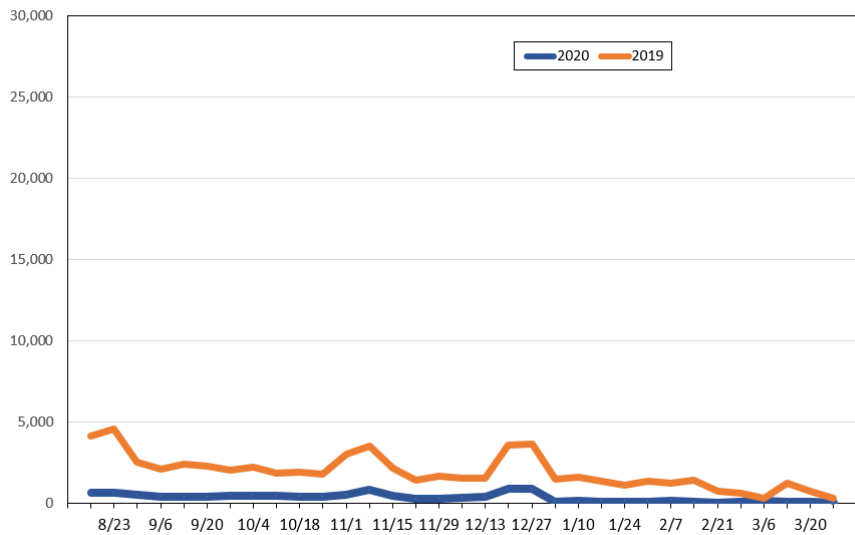
Source: Global Agency Pro, as of August 8, 2020

### Travel Agency Weekly Bookings for Future Travel to Hawai'i as of August 8, 2020 Japan



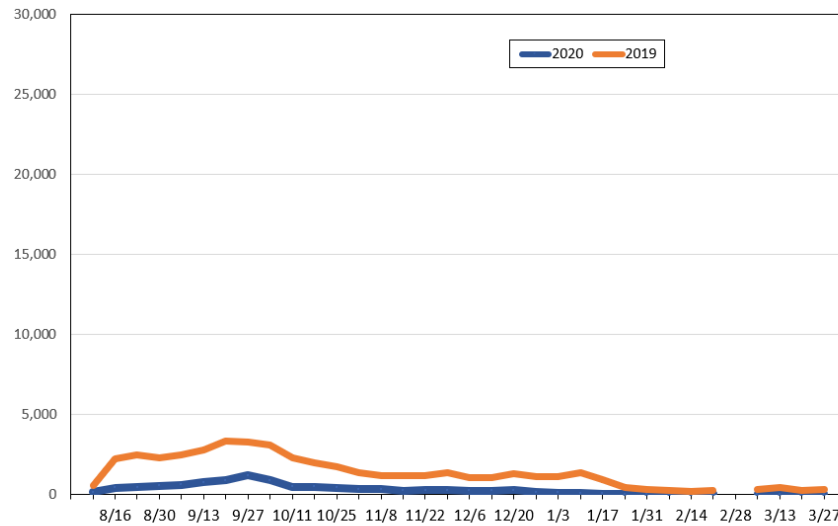
Source: Global Agency Pro, as of August 8, 2020

### Travel Agency Weekly Bookings for Future Travel to Hawai'i as of August 8, 2020 Canada



Source: Global Agency Pro, as of August 8, 2020

### Travel Agency Weekly Bookings for Future Travel to Hawai'i as of August 8, 2020 Australia



Source: Global Agency Pro, as of August 8, 2020