

HTA COVID-19 UPDATE

(Issued: 8/20/20 @ 4:30pm)

Novel Coronavirus in Hawaii

COVID-19 Positive* Cases

Cumulative totals as of 12:00 noon on August 20, 2020

Statewide	Total
Total Cases	5844 (236 new)
Released from Isolation†	2031
Required Hospitalization	317
Deaths	45
BY COUNTY	Total
Hawaii County	
Total Cases	164
Released from Isolation†	134
Required Hospitalization	7
Deaths	0
Honolulu County	
Total Cases	5340
Released from Isolation†	1681
Required Hospitalization	276
Deaths	37
Kauai County	
Total Cases	54
Released from Isolation†	50
Required Hospitalization	1
Deaths	0
Maui County	
Total Cases	263
Released from Isolation†	166
Required Hospitalization	31
Deaths	7
HI Residents diagnosed outside of HI	23
County Pending	0

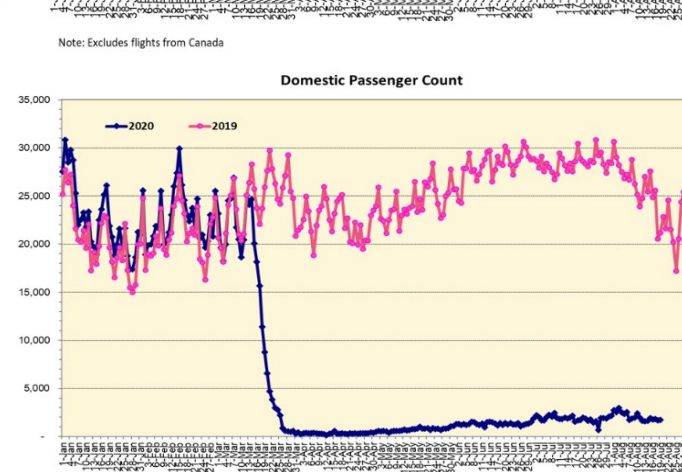
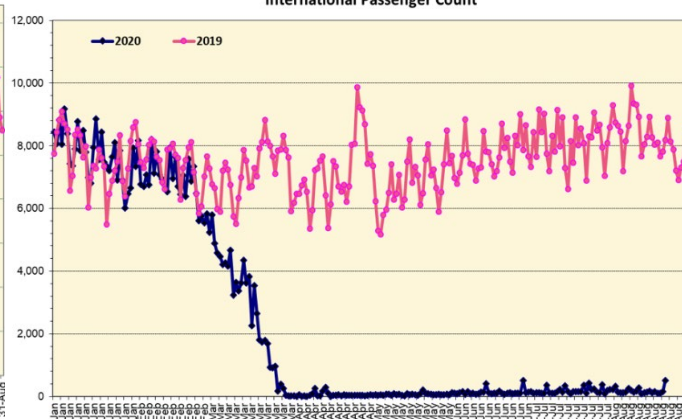
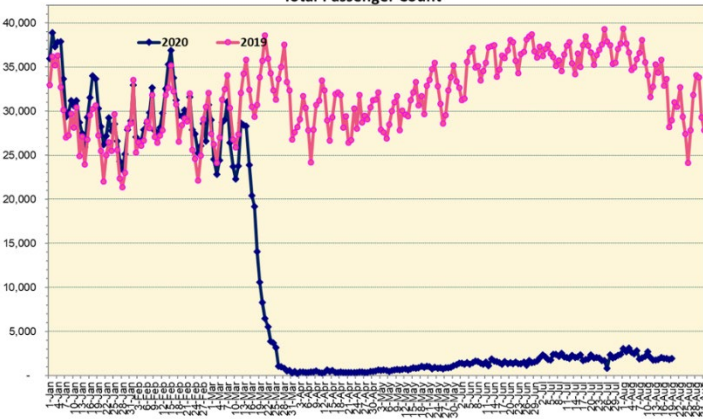
*includes presumptive and confirmed cases, data are preliminary and subject to change; note that CDC provides case counts according to states of residence.

†Isolation should be maintained until at least 3 days (72 hours) after resolution of fever and myalgia without the use of antipyretics OR at least 7 days have passed since symptom onset, whichever is longer.

Total Passenger Count

International Passenger Count

Domestic Passenger Count



Note: Excludes flights from Canada

Note: Excludes flights from Canada

Daily Passenger Count Table

08/19/2020	Domestic	International	Total
Oahu	1615	157	1772
Maui	58		58
Island of Hawaii	75		75
Kauai	0		0
State	1748	157	1905

8/20/20 Hawaii Passenger Arrivals by Air Update

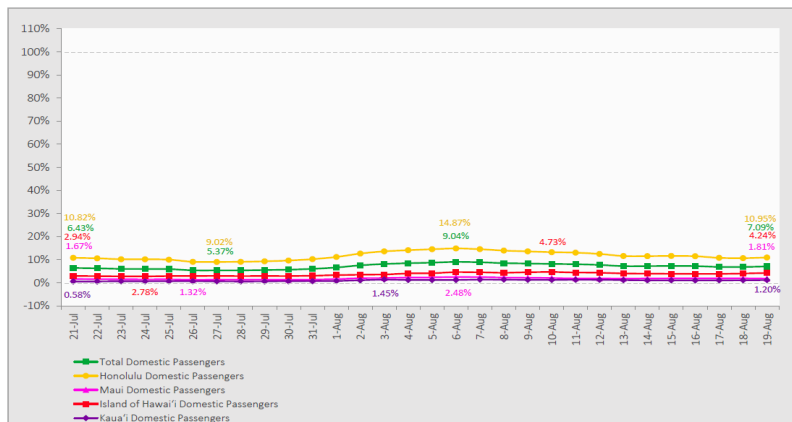
Yesterday, 2047 people arrived in Hawaii. This table shows the number of people who arrived by air from out of state yesterday and does not include interisland travel. This data was collected from the Hawaii DOT new Mandatory Travel Declaration Form.

	Kona	Maui	Oahu	Lihue	Total
Crew	8	12	169		189
Transit	1		122		123
Military			187		187
Exempt			181		181
Relocate to Hawaii	15	6	251		272
Returning Resident	38	26	573		637
Visitor	21	26	411		458
Grand Total	83	70	1894	0	2047
Flights	2	2	23	0	27

Market Impact Update: <https://www.dropbox.com/8/20/20 HTA COVID19 Update>

7-Day Domestic by Island Moving Average Daily Passenger Volume

2020 Volume as Percentage of 2019 Volume
Through August 19, 2020



Source: HVCB analysis based on data from DBEDT
Note: Passenger volume figures include both visitors and residents.

Domestic by Island Month-to-Date and Year-to-Date Daily Passenger Volume

2020 Volume versus 2019 Volume
Through August 19, 2020

August 2020 (Month-to-Date through August 19)

	2020	2019	Volume Change	Percent Change
Honolulu	33,771	270,729	-236,958	-87.5%
Maui County	2,739	136,425	-133,686	-98.0%
Island of Hawai'i	2,467	60,189	-57,722	-95.9%
Kaua'i	522	44,825	-44,303	-98.8%
Total	39,499	512,168	-472,669	-92.3%

2020 (Year-to-Date through August 19)

	2020	2019	Volume Change	Percent Change
Honolulu	1,111,140	2,993,364	-1,882,224	-62.9%
Maui County	452,021	1,466,770	-1,014,749	-69.2%
Island of Hawai'i	224,669	672,216	-447,547	-66.6%
Kaua'i	150,802	505,964	-355,162	-70.2%
Total	1,938,632	5,638,314	-3,699,683	-65.6%

Source: HVCB analysis based on data from DBEDT
Note: Passenger volume figures include both visitors and residents. Total includes other International passengers. 2020 includes one additional day due to Leap Year (February 29th, 2020).

News Highlights

August 20, 2020

Hawaii News Now: [New rules on gatherings now in effect for Oahu in effort to curb COVID-19 surge](#)

Honolulu Star-Advertiser: [Gov. David Ige defends Hawaii's contact tracing](#)

KHON2: [27 flights arrive in Hawaii following Governors travel announcement](#)

Hawaii News Now: [Hawaii Island film industry experiences pandemic slowdown](#)

Hawaii News Now: [Another beloved Waikiki eatery closes its doors amid economic fallout](#)

KHON2: [Waikiki Aquarium to close indefinitely](#)

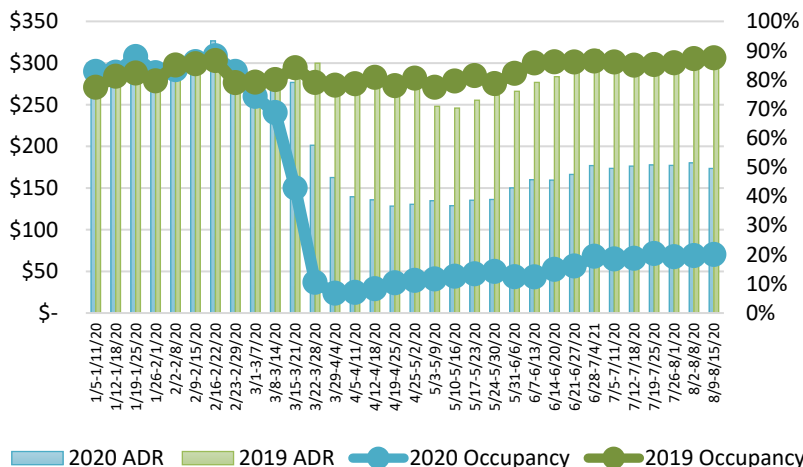
Honolulu Civil Beat: [Is COVID-19 Spreading Because People Have Gotten Tired Of Restrictions?](#)

West Hawaii Today: [Blanket screening: Thermal temperature screening expands to all arrival gates statewide](#)

Travel Weekly: [Hawaii postpones pretravel testing program for second time](#)

CNN: [Hawaii further delays quarantine lift until October 1](#)

State of Hawai'i Hotel Performance by Week - 2020 vs 2019



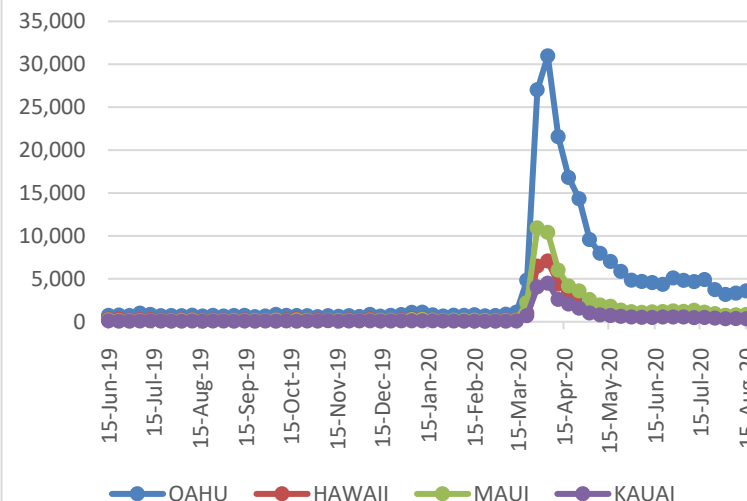
Source: STR, Inc. © Copyright 2020 Hawai'i Tourism Authority

Hawaii Hotel Performance Info:

For the week of August 9 – August 15, 2020

	Occupancy	ADR	RevPAR
State of Hawaii	20.0%	\$ 173.50	\$ 34.74
Oahu	22.8%	\$ 165.53	\$ 37.72
Maui County	11.1%	\$ 225.73	\$ 25.12
Kauai County	15.4%	\$ 182.91	\$ 28.21
Island of Hawaii	25.3%	\$ 164.04	\$ 41.57

2020 Initial Weekly Unemployment Claims by Island



Weekly Unemployment Initial Claims: August 15, 2020

State of Hawaii	5,536
C&C of Oahu	3,577
Hawaii County	656
Maui County	832
Kauai County	341
Agent (filed in Hawaii against another state)	130

Helpful Resources

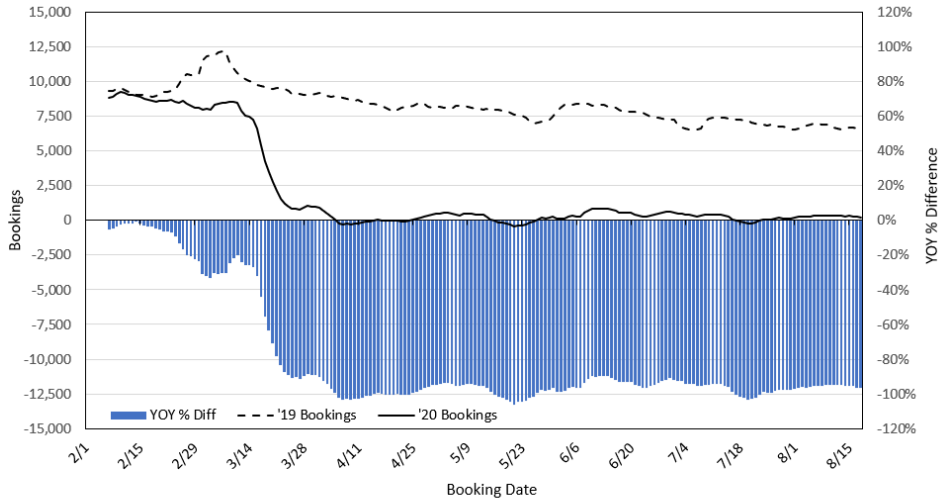
Department of Health
<https://hawaiiocovid19.com/>

Department of Health
<https://health.hawaii.gov/docd/advisories/novel-coronavirus-2019>

Dept. of Business, Economic Development & Tourism
<https://dbedt.hawaii.gov/economic/covid19/>

Department of Transportation
<https://hidot.hawaii.gov/coronavirus/>

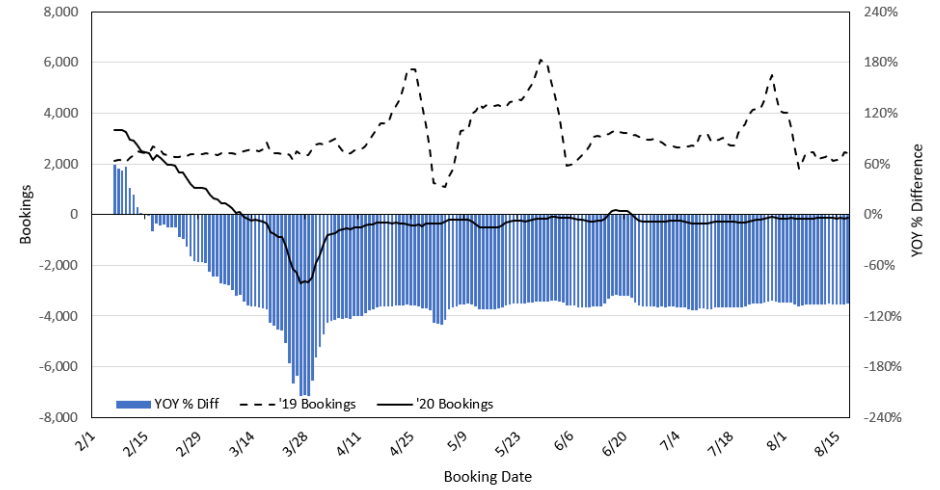
Travel Agency Bookings to Hawaii for Future Arrivals*
Based on a 7-day Moving Average, 2020 vs 2019
U.S.



*Future Arrivals refers to all arrivals that are 'future' relative to the referenced booking date.
 Source: Global Agency Pro

Update: Aug 18, 2020

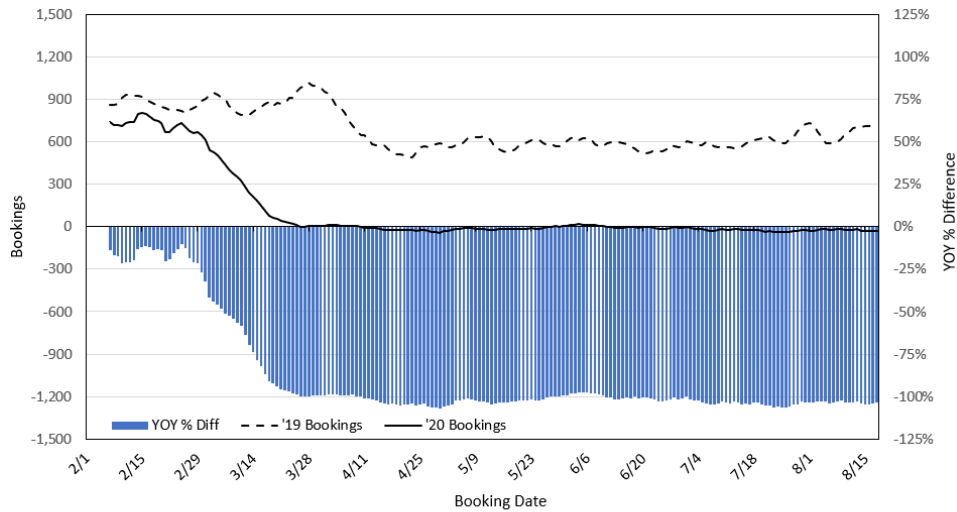
Travel Agency Bookings to Hawaii for Future Arrivals*
Based on a 7-day Moving Average, 2020 vs 2019
Japan



*Future Arrivals refers to all arrivals that are 'future' relative to the referenced booking date.
 Source: Global Agency Pro

Update: Aug 18, 2020

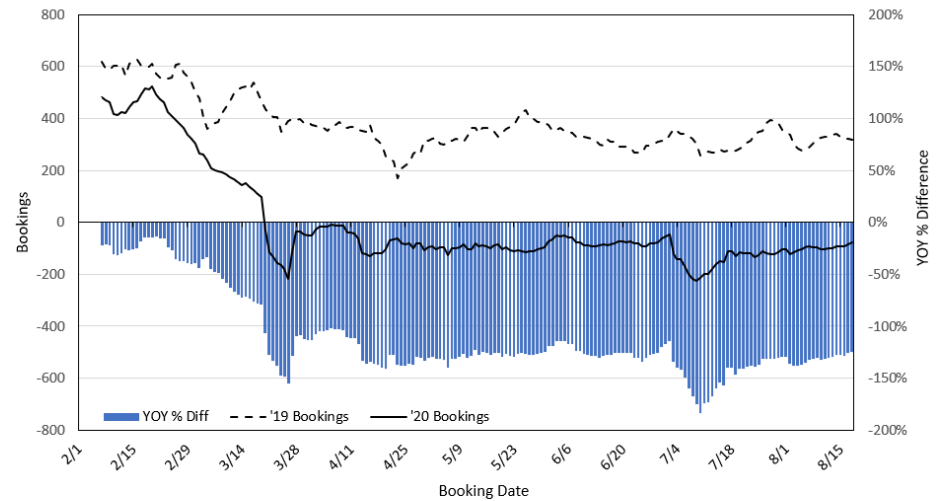
Travel Agency Bookings to Hawaii for Future Arrivals*
Based on a 7-day Moving Average, 2020 vs 2019
Canada



*Future Arrivals refers to all arrivals that are 'future' relative to the referenced booking date.
 Source: Global Agency Pro

Update: Aug 18, 2020

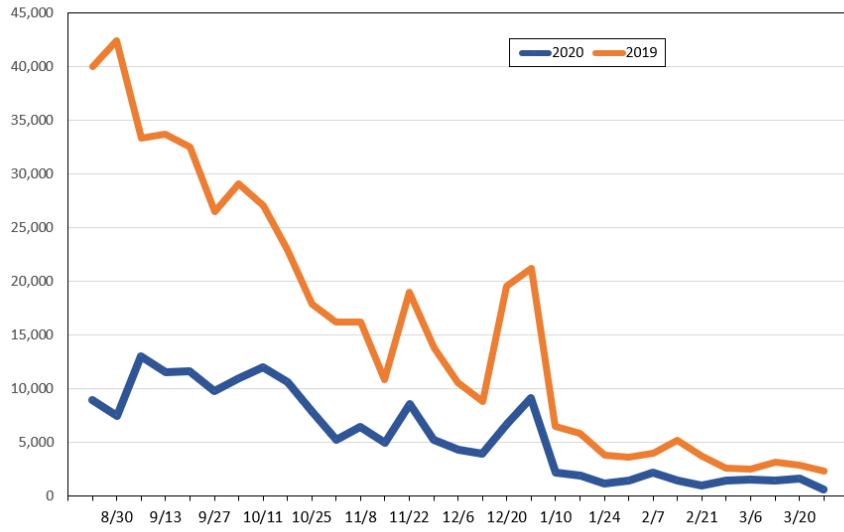
Travel Agency Bookings to Hawaii for Future Arrivals*
Based on a 7-day Moving Average, 2020 vs 2019
Australia



*Future Arrivals refers to all arrivals that are 'future' relative to the referenced booking date.
 Source: Global Agency Pro

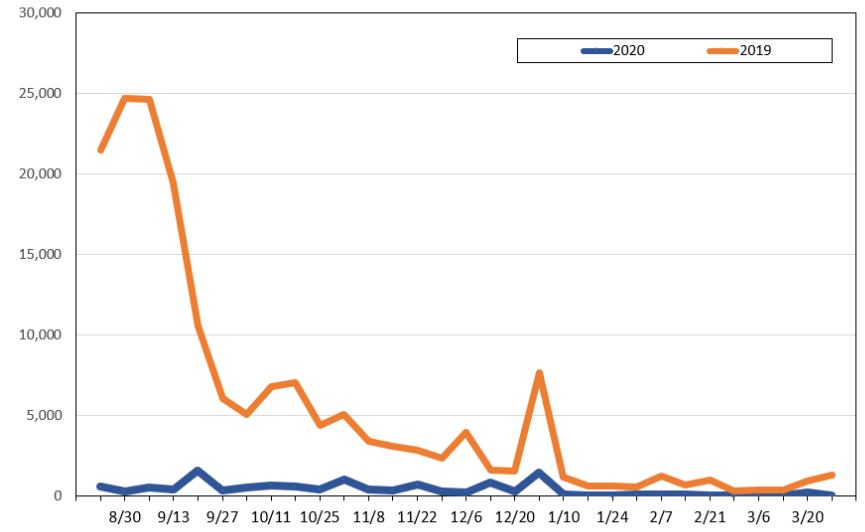
Update: Aug 18, 2020

Travel Agency Weekly Bookings for Future Travel to Hawai'i as of August 18, 2020
U.S.



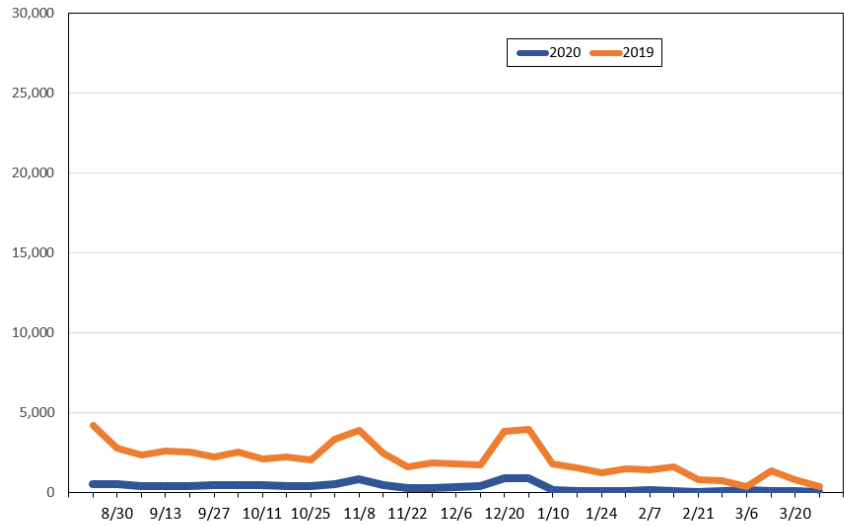
Source: Global Agency Pro, as of August 18, 2020

Travel Agency Weekly Bookings for Future Travel to Hawai'i as of August 18, 2020
Japan



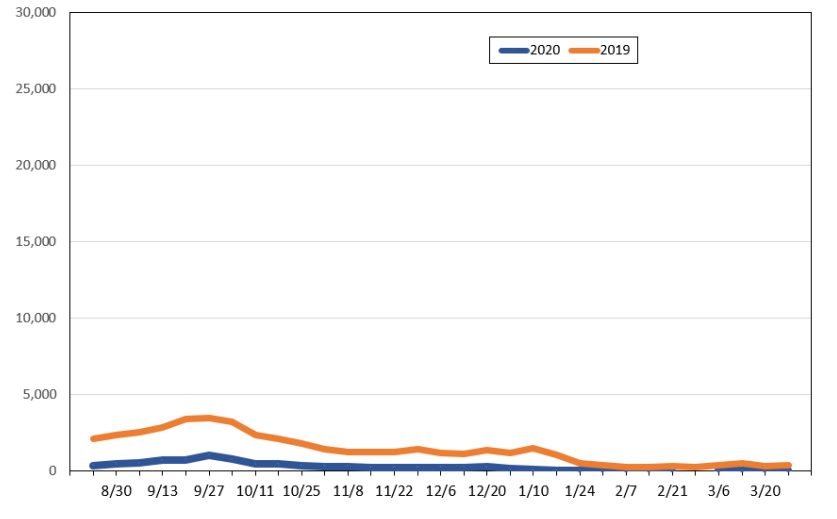
Source: Global Agency Pro, as of August 18, 2020

Travel Agency Weekly Bookings for Future Travel to Hawai'i as of August 18, 2020
Canada



Source: Global Agency Pro, as of August 18, 2020

Travel Agency Weekly Bookings for Future Travel to Hawai'i as of August 18, 2020
Australia



Source: Global Agency Pro, as of August 18, 2020