

# HTA COVID-19 UPDATE

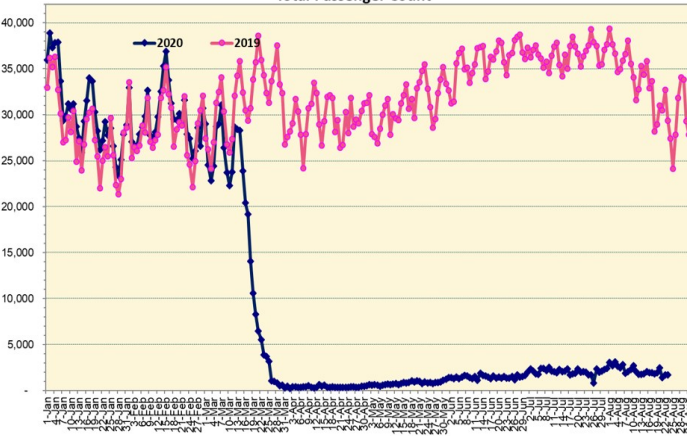
(Issued: 8/24/20 @ 4:30pm)

## Novel Coronavirus in Hawaii

COVID-19 Positive\* Cases

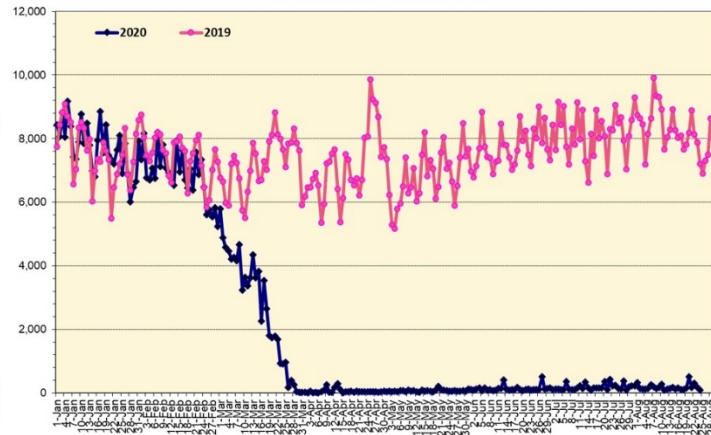
Cumulative totals as of 12:00 noon on August 24, 2020

Total Passenger Count



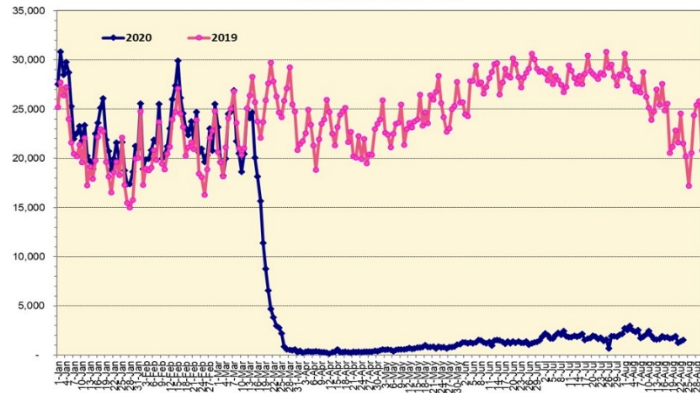
Note: Excludes flights from Canada

International Passenger Count



Note: Excludes flights from Canada

Domestic Passenger Count



### Daily Passenger Count Table

08/23/2020	Domestic	International	Total
Oahu	1349	169	1518
Maui	89		89
Island of Hawaii	82		82
Kauai	35		35
State	1555	169	1724

### 8/24/20 Hawaii Passenger Arrivals by Air Update

Yesterday, 1854 people arrived in Hawaii. This table shows the number of people who arrived by air from out of state yesterday and does not include interisland travel. This data was collected from the Hawaii DOT new Mandatory Travel Declaration Form.

	Kona	Maui	Oahu	Lihue	Total
Crew	16	26	123	7	172
Transit			166		166
Military			80		80
Exempt			207		207
Relocate to Hawaii	5	15	78	3	101
Returning Resident	43	53	632	10	738
Visitor	36	23	320	11	390
<b>Grand Total</b>	<b>100</b>	<b>117</b>	<b>1606</b>	<b>31</b>	<b>1854</b>
<b>Flights</b>	<b>5</b>	<b>4</b>	<b>23</b>	<b>1</b>	<b>33</b>

Market Impact Update: <https://www.dropbox.com/8/24/20 HTA COVID19 Update>

Statewide	Total
Total Cases	<b>6769</b> (169 new)

Released from Isolation† 2172

Required Hospitalization 399

Deaths 49

BY COUNTY	Total
-----------	-------

#### Hawaii County

Total Cases 209

Released from Isolation† 144

Required Hospitalization 8

Deaths 0

#### Honolulu County

Total Cases 6181

Released from Isolation† 1807

Required Hospitalization 352

Deaths 41

#### Kauai County

Total Cases 56

Released from Isolation† 53

Required Hospitalization 1

Deaths 0

#### Maui County

Total Cases 300

Released from Isolation† 168

Required Hospitalization 36

Deaths 7

#### HI Residents diagnosed outside of HI

County Pending 0

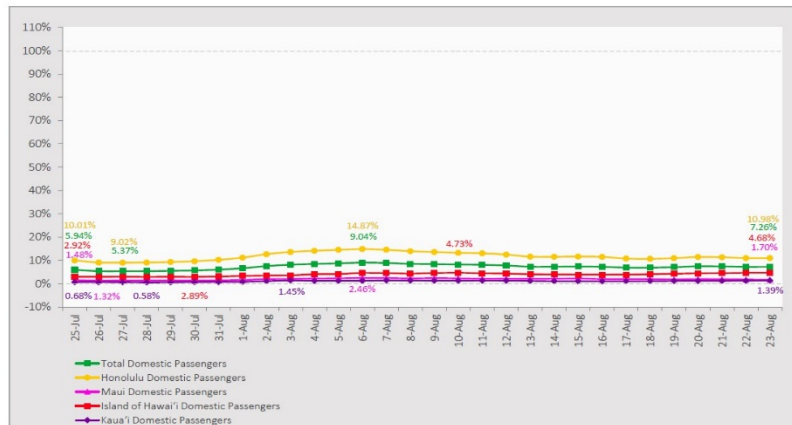
\*includes presumptive and confirmed cases, data are preliminary and subject to change; note that CDC provides case counts according to states of residence.

†Isolation should be maintained until at least 3 days (72 hours) after resolution of fever and myalgia without the use of antipyretics OR at least 7 days have passed since symptom onset, whichever is longer.

## 7-Day Domestic by Island Moving Average Daily Passenger Volume

2020 Volume as Percentage of 2019 Volume

Through August 23, 2020



Source: HVCB analysis based on data from DBEDT

Note: Passenger volume figures include both visitors and residents.

## Domestic by Island Month-to-Date and Year-to-Date Daily Passenger Volume

2020 Volume versus 2019 Volume

Through August 23, 2020

August 2020 (Month-to-Date through August 23)

	2020	2019	Volume Change	Percent Change
Honolulu	39,033	186,139	-147,106	-79.0%
Maui County	3,282	96,830	-93,548	-96.6%
Island of Hawai'i	2,850	43,414	-40,564	-93.4%
Kaua'i	639	30,608	-29,969	-97.9%
Total	45,804	598,281	-552,478	-92.3%

2020 (Year-to-Date through August 23)

	2020	2019	Volume Change	Percent Change
Honolulu	1,116,401	2,908,774	-1,792,373	-61.6%
Maui County	452,564	1,427,175	-974,611	-68.3%
Island of Hawai'i	225,052	655,441	-430,389	-65.7%
Kaua'i	150,919	491,747	-340,828	-69.3%
Total	1,944,936	5,724,427	-3,779,491	-66.0%

Source: HVCB analysis based on data from DBEDT

Note: Passenger volume figures include both visitors and residents. Total includes other international passengers. 2020 includes one additional day due to Leap Year (February 29th, 2020).

## News Highlights

August 24, 2020

**Hawaii News Now:** [Lt. Gov. Green repeats call for stronger mandates as Hawaii sees another day with 200-plus cases](#)

**Honolulu Star-Advertiser:** [Returning Hawaii residents outnumber visitor arrivals on Friday](#)

**West Hawaii Today:** [\\$10M in federal relief money to go to nontourism jobs](#)

**West Hawaii Today:** [Leeward Planning Commission gives OK to airport hotel proposal](#)

**West Hawaii Today:** [Kim expresses doubts about 'bubble' resorts](#)

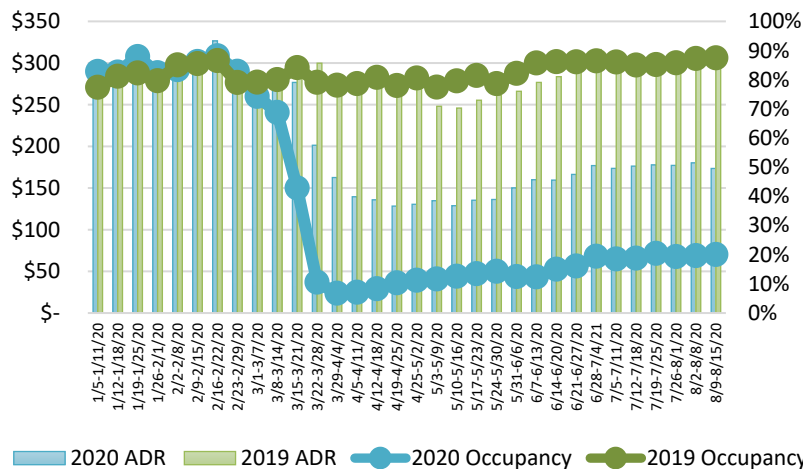
**The Garden Island:** [The PAL Papers: Can Kauai recover from COVID-19? If so, how?](#)

**The Garden Island:** [Ige declines to address open records request](#)

**U.S. News & World Report:** [Former Hawaii Plantation Towns Struggling Without Tourism](#)

**Los Angeles Times:** [Hawaii never reopened this summer. What about Thanksgiving and Christmas?](#)

## State of Hawai'i Hotel Performance by Week - 2020 vs 2019



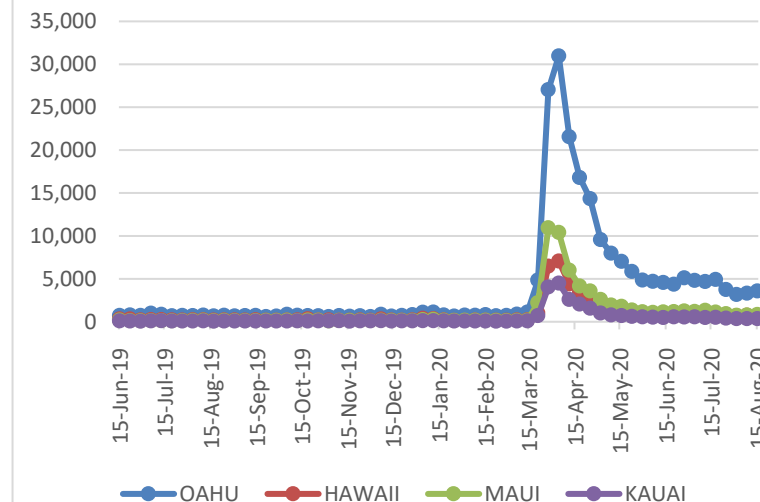
Source: STR, Inc. © Copyright 2020 Hawai'i Tourism Authority

## Hawaii Hotel Performance Info:

For the week of August 9 – August 15, 2020

	Occupancy	ADR	RevPAR
State of Hawaii	20.0%	\$ 173.50	\$ 34.74
Oahu	22.8%	\$ 165.53	\$ 37.72
Maui County	11.1%	\$ 225.73	\$ 25.12
Kauai County	15.4%	\$ 182.91	\$ 28.21
Island of Hawaii	25.3%	\$ 164.04	\$ 41.57

## 2020 Initial Weekly Unemployment Claims by Island



## Weekly Unemployment Initial Claims: August 15, 2020

State of Hawaii	5,536
C&C of Oahu	3,577
Hawaii County	656
Maui County	832
Kauai County	341
Agent (filed in Hawaii against another state)	130

## Helpful Resources

Department of Health

<https://hawaiicovid19.com/>

Department of Health

<https://health.hawaii.gov/docd/advisories/novel-coronavirus-2019>

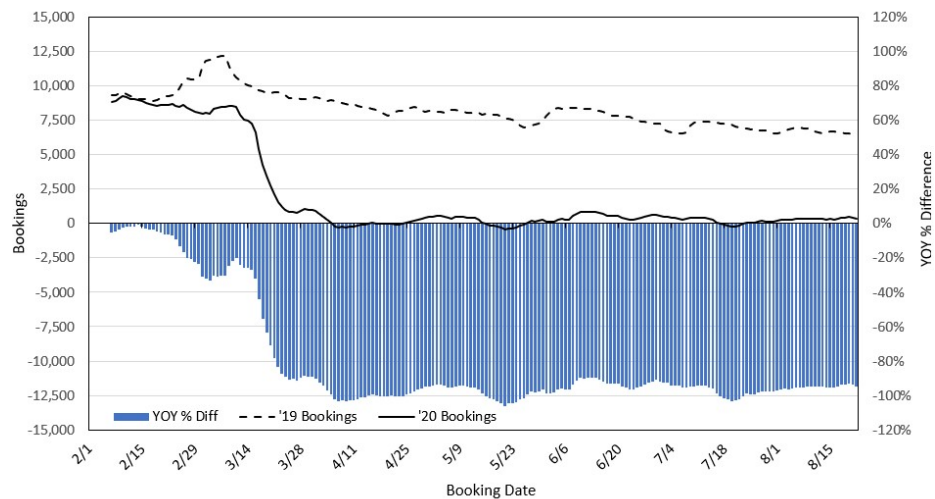
Dept. of Business, Economic Development & Tourism

<https://dbedt.hawaii.gov/economic/covid19/>

Department of Transportation

<https://hidot.hawaii.gov/coronavirus/>

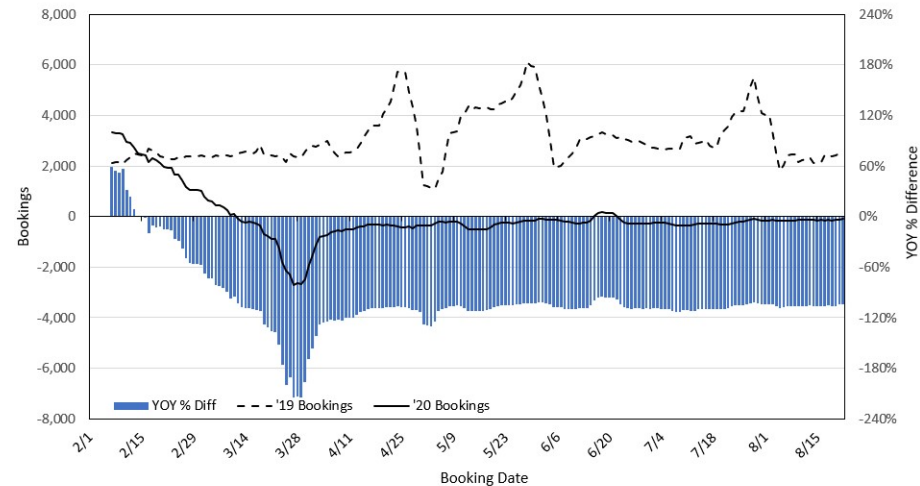
### Travel Agency Bookings to Hawaii for Future Arrivals\* Based on a 7-day Moving Average, 2020 vs 2019 U.S.



\*Future Arrivals refers to all arrivals that are 'future' relative to the referenced booking date.  
Source: Global Agency Pro

Update: Aug 22, 2020

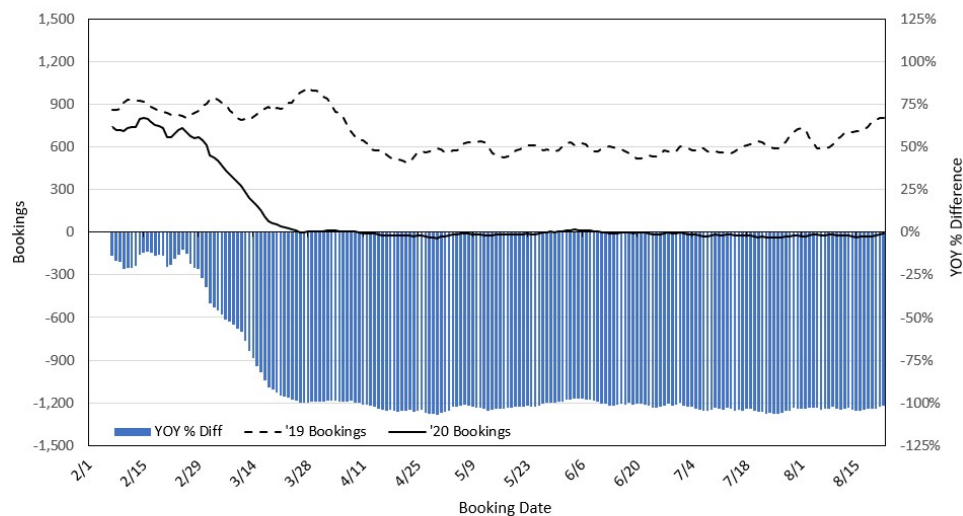
### Travel Agency Bookings to Hawaii for Future Arrivals\* Based on a 7-day Moving Average, 2020 vs 2019 Japan



\*Future Arrivals refers to all arrivals that are 'future' relative to the referenced booking date.  
Source: Global Agency Pro

Update: Aug 22, 2020

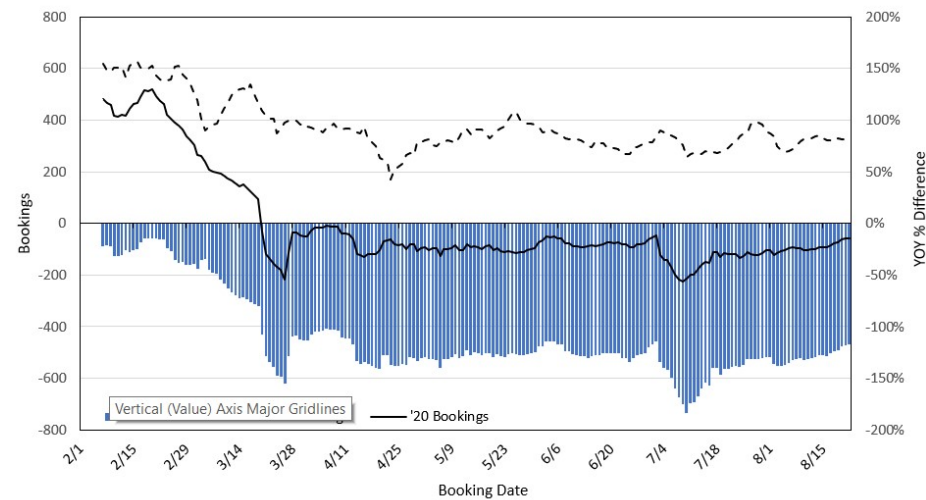
### Travel Agency Bookings to Hawaii for Future Arrivals\* Based on a 7-day Moving Average, 2020 vs 2019 Canada



\*Future Arrivals refers to all arrivals that are 'future' relative to the referenced booking date.  
Source: Global Agency Pro

Update: Aug 22, 2020

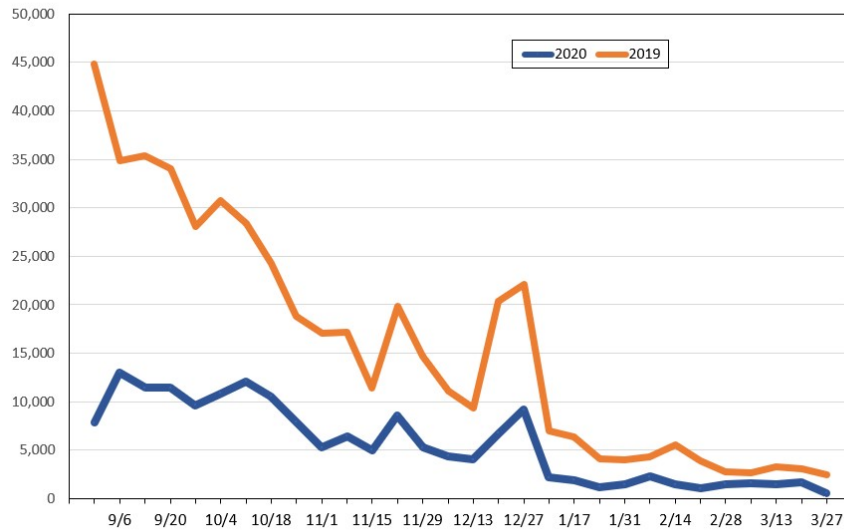
### Travel Agency Bookings to Hawaii for Future Arrivals\* Based on a 7-day Moving Average, 2020 vs 2019 Australia



\*Future Arrivals refers to all arrivals that are 'future' relative to the referenced booking date.  
Source: Global Agency Pro

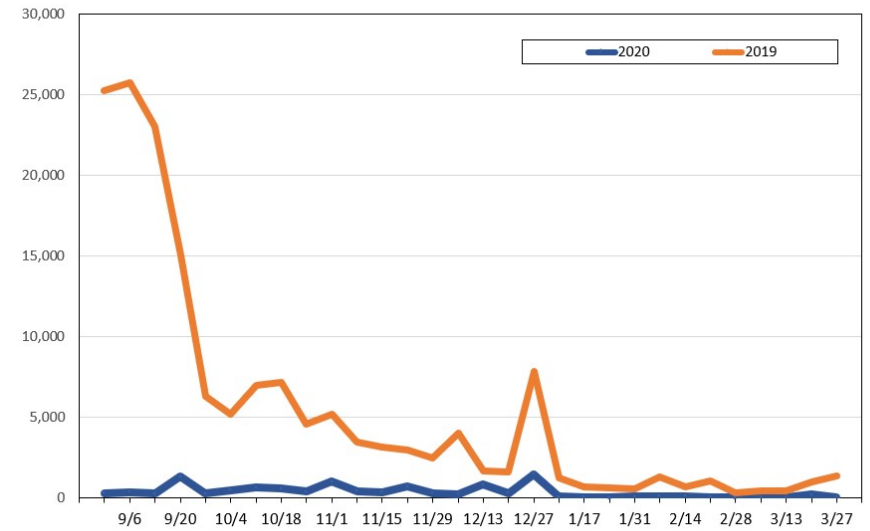
Update: Aug 22, 2020

Travel Agency Weekly Bookings for Future Travel to Hawai'i as of August 22, 2020  
U.S.



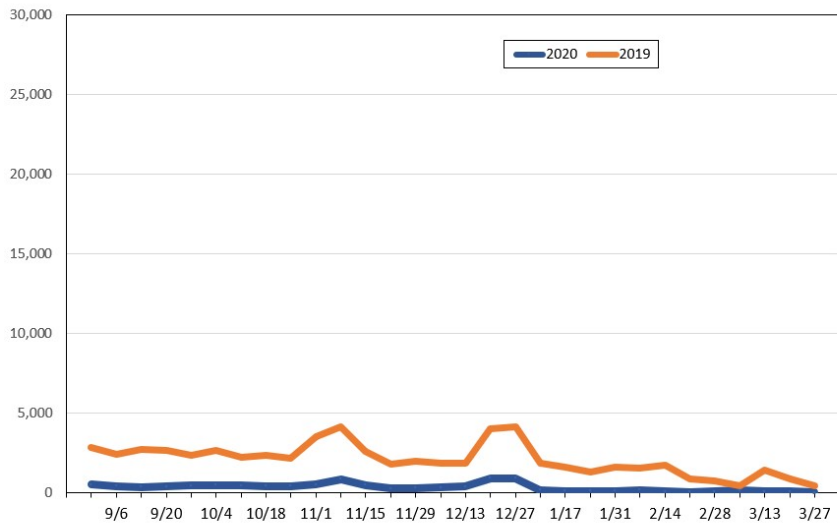
Source: Global Agency Pro, as of August 22, 2020

Travel Agency Weekly Bookings for Future Travel to Hawai'i as of August 22, 2020  
Japan



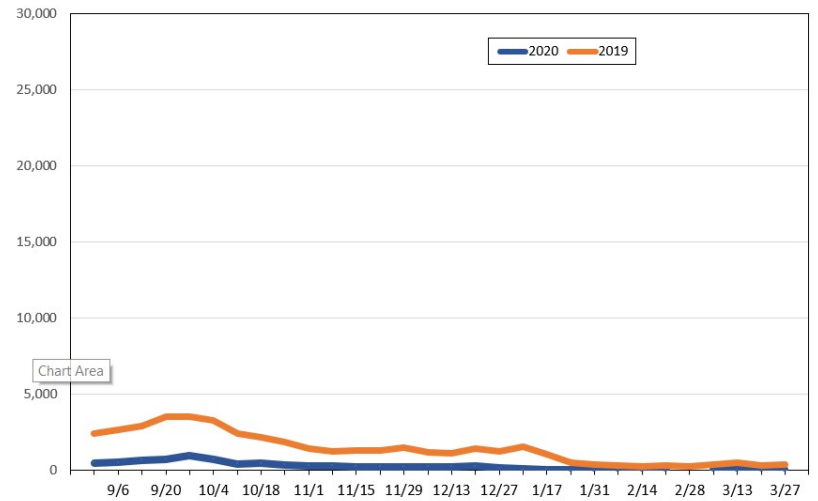
Source: Global Agency Pro, as of August 22, 2020

Travel Agency Weekly Bookings for Future Travel to Hawai'i as of August 22, 2020  
Canada



Source: Global Agency Pro, as of August 22, 2020

Travel Agency Weekly Bookings for Future Travel to Hawai'i as of August 22, 2020  
Australia



Source: Global Agency Pro, as of August 22, 2020