

HTA COVID-19 UPDATE

(Issued: 8/25/20 @ 4:30pm)

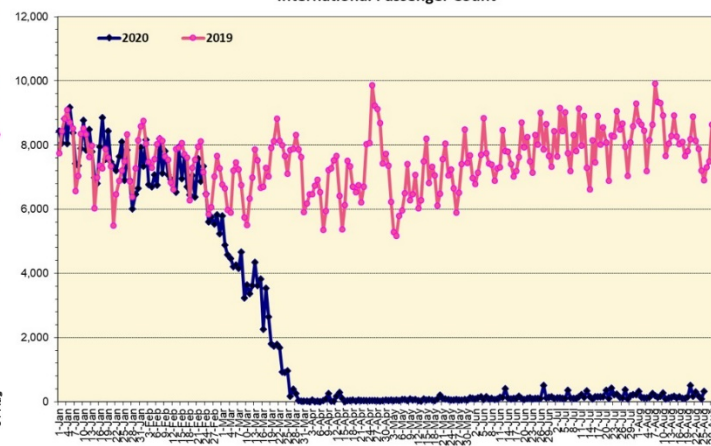
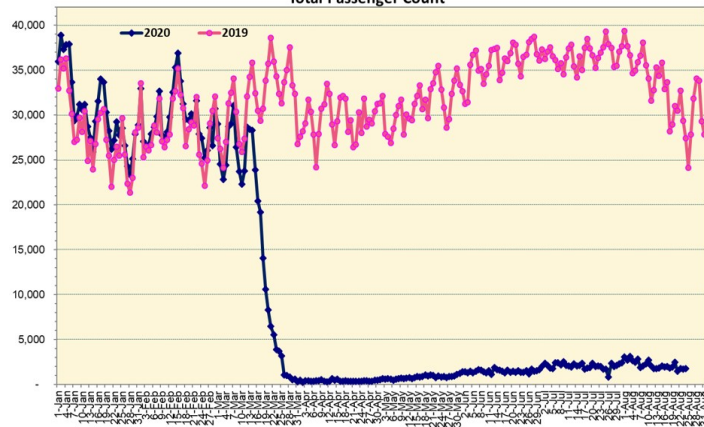
Novel Coronavirus in Hawaii

COVID-19 Positive* Cases

Cumulative totals as of 12:00 noon on August 25, 2020

Total Passenger Count

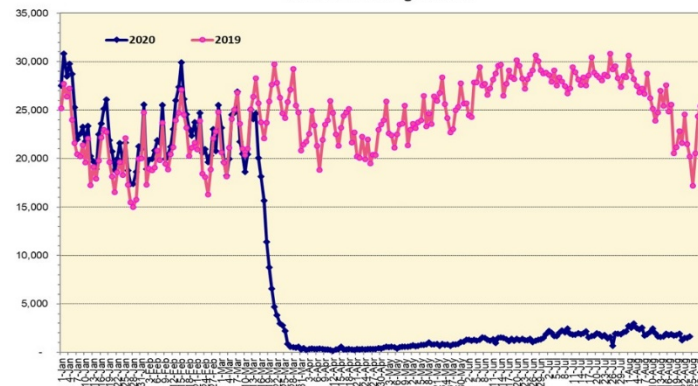
International Passenger Count



Note: Excludes flights from Canada

Note: Excludes flights from Canada

Domestic Passenger Count



Daily Passenger Count Table

08/24/2020	Domestic	International	Total
Oahu	1386	90	1476
Maui	143		143
Island of Hawaii	84		84
Kauai	22		22
State	1635	90	1725

8/25/20 Hawaii Passenger Arrivals by Air Update

Yesterday, 2118 people arrived in Hawaii. This table shows the number of people who arrived by air from out of state yesterday and does not include interisland travel. This data was collected from the Hawaii DOT new Mandatory Travel Declaration Form.

	Kona	Maui	Oahu	Lihue	Total
Crew	9	21	134	6	170
Transit			107		107
Military			118		118
Exempt			209		209
Relocate to Hawaii	7	17	143		167
Returning Resident	46	74	617	94	831
Visitor	36	52	418	10	516
Grand Total	98	164	1746	110	2118
Flights	2	3	23	1	29

Statewide	Total
Total Cases	6984 (215 new)
Released from Isolation†	2236
Required Hospitalization	419
Deaths	49
BY COUNTY	Total
Hawaii County	
Total Cases	220
Released from Isolation†	146
Required Hospitalization	8
Deaths	0
Honolulu County	
Total Cases	6382
Released from Isolation†	1869
Required Hospitalization	372
Deaths	41
Kauai County	
Total Cases	56
Released from Isolation†	53
Required Hospitalization	1
Deaths	0
Maui County	
Total Cases	303
Released from Isolation†	168
Required Hospitalization	36
Deaths	7
HI Residents diagnosed outside of HI	23
County Pending	0

*includes presumptive and confirmed cases, data are preliminary and subject to change; note that CDC provides case counts according to states of residence.

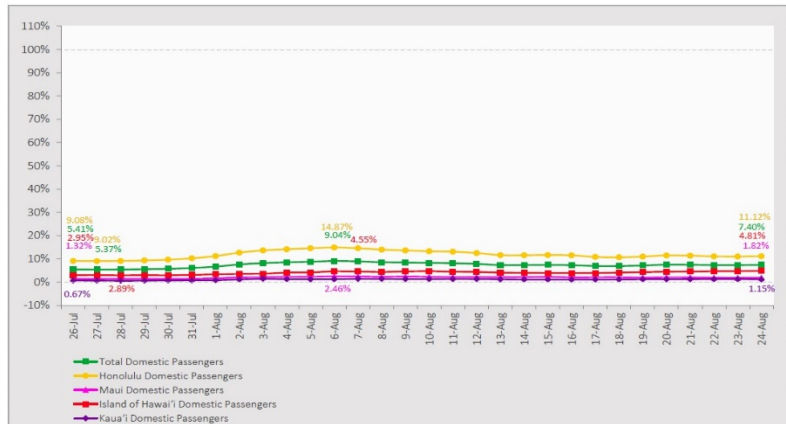
†Isolation should be maintained until at least 3 days (72 hours) after resolution of fever and myalgia without the use of antipyretics OR at least 7 days have passed since symptom onset, whichever is longer.

Market Impact Update: <https://www.dropbox.com/8/25/20 HTA COVID19 Update>

7-Day Domestic by Island Moving Average Daily Passenger Volume

2020 Volume as Percentage of 2019 Volume

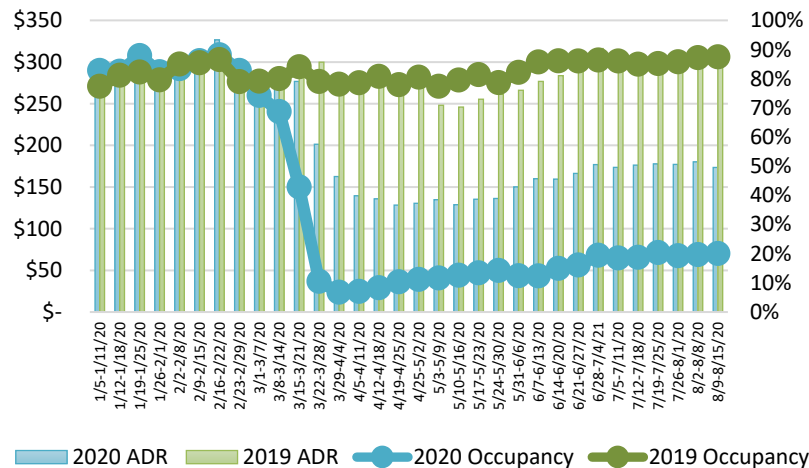
Through August 24, 2020



Source: HVCB analysis based on data from DBEDT

Note: Passenger volume figures include both visitors and residents.

State of Hawai'i Hotel Performance by Week - 2020 vs 2019



Source: STR, Inc. © Copyright 2020 Hawai'i Tourism Authority

Hawaii Hotel Performance Info:

For the week of August 9 – August 15, 2020

	Occupancy	ADR	RevPAR
State of Hawaii	20.0%	\$ 173.50	\$ 34.74
Oahu	22.8%	\$ 165.53	\$ 37.72
Maui County	11.1%	\$ 225.73	\$ 25.12
Kauai County	15.4%	\$ 182.91	\$ 28.21
Island of Hawaii	25.3%	\$ 164.04	\$ 41.57

Domestic by Island Month-to-Date and Year-to-Date Daily Passenger Volume

2020 Volume versus 2019 Volume

Through August 24, 2020

August 2020 (Month-to-Date through August 24)

	2020	2019	Volume Change	Percent Change
Honolulu	40,434	333,719	-293,285	-87.9%
Maui County	3,463	165,247	-161,784	-97.9%
Island of Hawai'i	2,934	70,649	-67,715	-95.8%
Kauai	651	53,235	-52,584	-98.8%
Total	47,482	622,850	-575,368	-92.4%

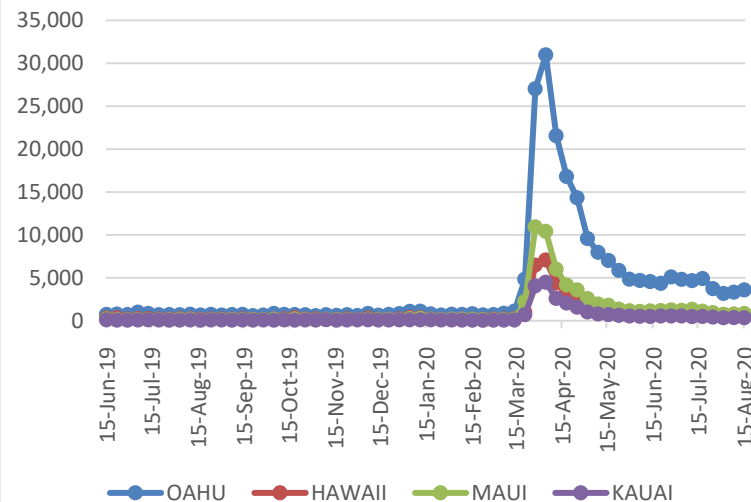
2020 (Year-to-Date through August 24)

	2020	2019	Volume Change	Percent Change
Honolulu	1,117,803	3,056,354	-1,938,551	-63.4%
Maui County	452,745	1,495,592	-1,042,847	-69.7%
Island of Hawai'i	225,136	682,676	-457,540	-67.0%
Kauai	150,931	514,374	-363,443	-70.7%
Total	1,946,615	5,748,996	-3,802,382	-66.1%

Source: HVCB analysis based on data from DBEDT

Note: Passenger volume figures include both visitors and residents. Total includes other international passengers. 2020 includes one additional day due to Leap Year (February 29th, 2020).

2020 Initial Weekly Unemployment Claims by Island



Weekly Unemployment Initial Claims: August 15, 2020

State of Hawaii	5,536
C&C of Oahu	3,577
Hawaii County	656
Maui County	832
Kauai County	341
Agent (filed in Hawaii against another state)	130

News Highlights

August 25, 2020

Hawaii News Now: [Governor issues another sweeping 'stay-at-home' order on Oahu for 2 weeks](#)

Hawaii News Now: [Hawaii mayor expresses doubts about bubble quarantine plan](#)

Honolulu Star-Advertiser: [New data shows young adults have the highest number of COVID-19 diagnoses in Hawaii](#)

Honolulu Star-Advertiser: [Hawaii airports getting facial imaging technology by end of the year](#)

Honolulu Star-Advertiser: [Hawaii behind in launching new web app that collects traveler information](#)

KHON2: [Hawaii sees lowest number of passenger arrivals for the month of August](#)

Hawaii News Now: [In its 43rd year, Prince Lot Hula Festival gets community support to go virtual](#)

Hawaii Tribune-Herald: [Hilo restaurants curtail services in response to COVID-19 spike](#)

Hawaii Tribune-Herald: [Surge in East Hawaii cases leads to greater enforcement](#)

Helpful Resources

Department of Health

<https://hawaiicovid19.com/>

Department of Health

<https://health.hawaii.gov/docd/advisories/novel-coronavirus-2019>

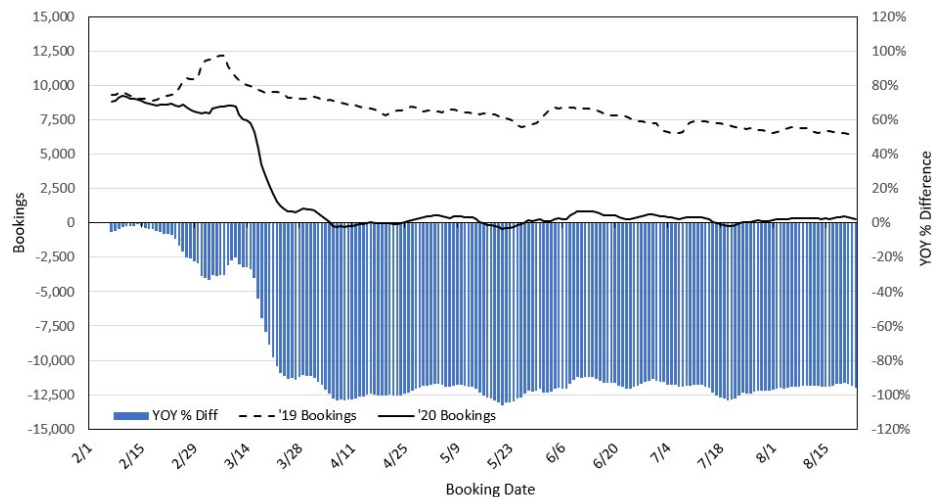
Dept. of Business, Economic Development & Tourism

<https://dbedt.hawaii.gov/economic/covid19/>

Department of Transportation

<https://hidot.hawaii.gov/coronavirus/>

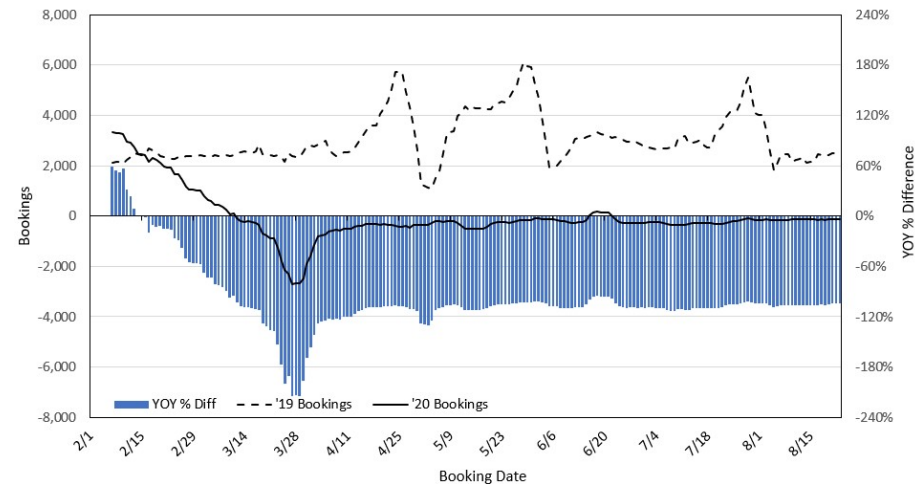
Travel Agency Bookings to Hawaii for Future Arrivals* Based on a 7-day Moving Average, 2020 vs 2019 U.S.



*Future Arrivals refers to all arrivals that are 'future' relative to the referenced booking date.
Source: Global Agency Pro

Update: Aug 23, 2020

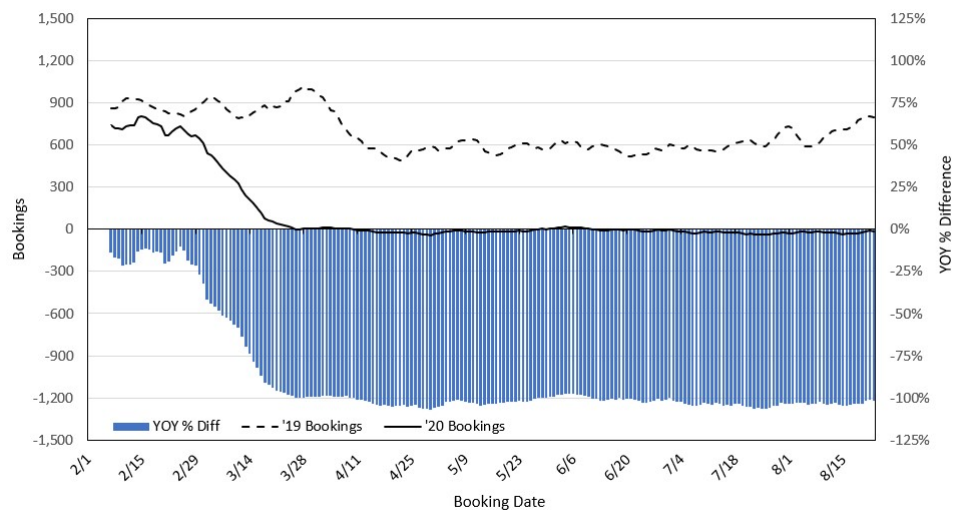
Travel Agency Bookings to Hawaii for Future Arrivals* Based on a 7-day Moving Average, 2020 vs 2019 Japan



*Future Arrivals refers to all arrivals that are 'future' relative to the referenced booking date.
Source: Global Agency Pro

Update: Aug 23, 2020

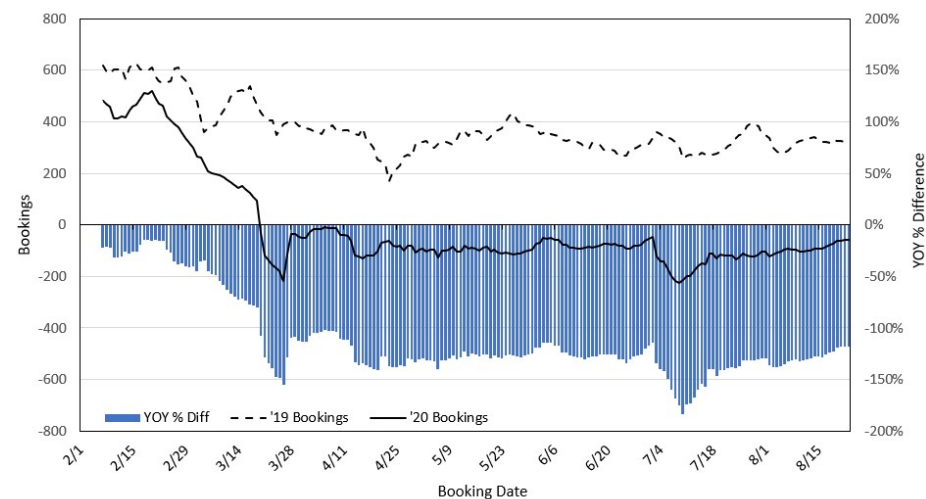
Travel Agency Bookings to Hawaii for Future Arrivals* Based on a 7-day Moving Average, 2020 vs 2019 Canada



*Future Arrivals refers to all arrivals that are 'future' relative to the referenced booking date.
Source: Global Agency Pro

Update: Aug 23, 2020

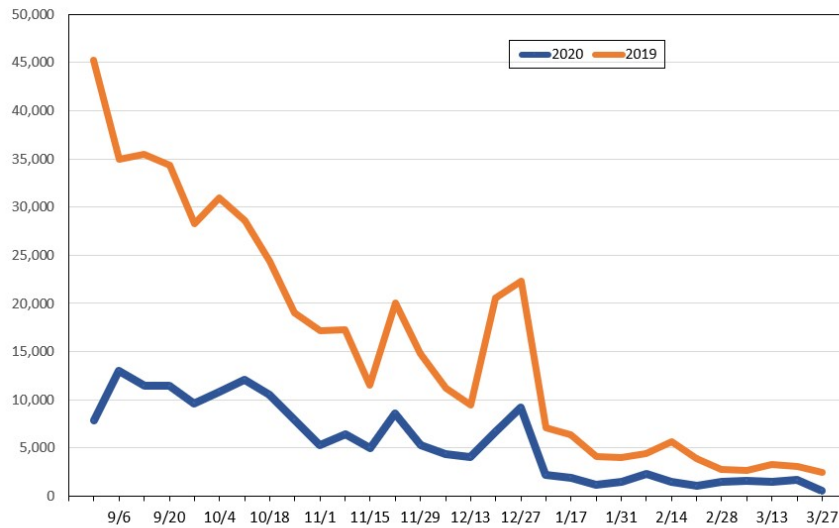
Travel Agency Bookings to Hawaii for Future Arrivals* Based on a 7-day Moving Average, 2020 vs 2019 Australia



*Future Arrivals refers to all arrivals that are 'future' relative to the referenced booking date.
Source: Global Agency Pro

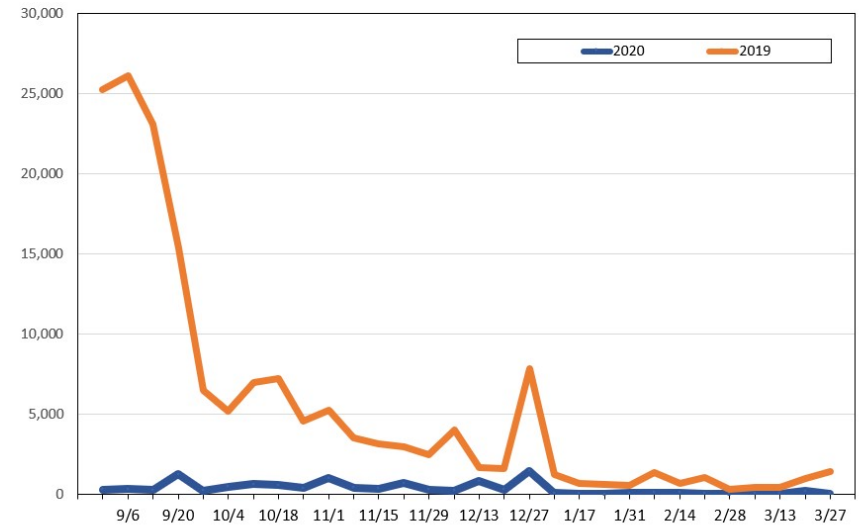
Update: Aug 23, 2020

Travel Agency Weekly Bookings for Future Travel to Hawai'i as of August 23, 2020
U.S.



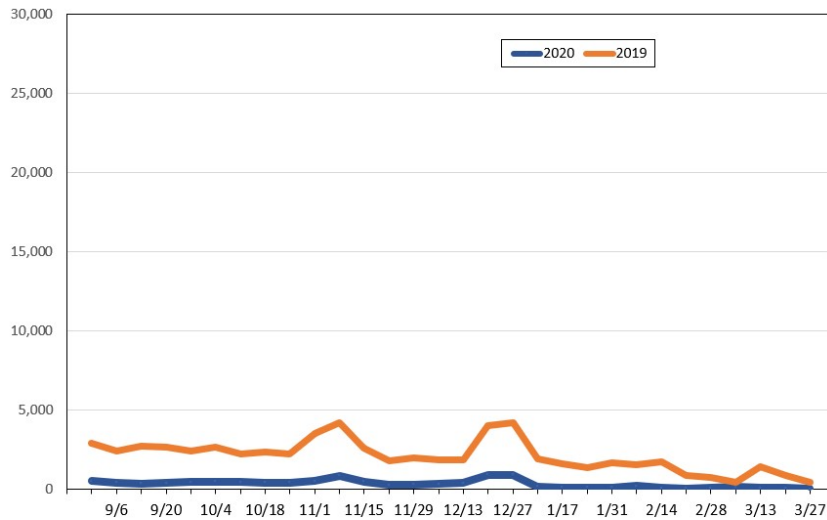
Source: Global Agency Pro, as of August 23, 2020

Travel Agency Weekly Bookings for Future Travel to Hawai'i as of August 23, 2020
Japan



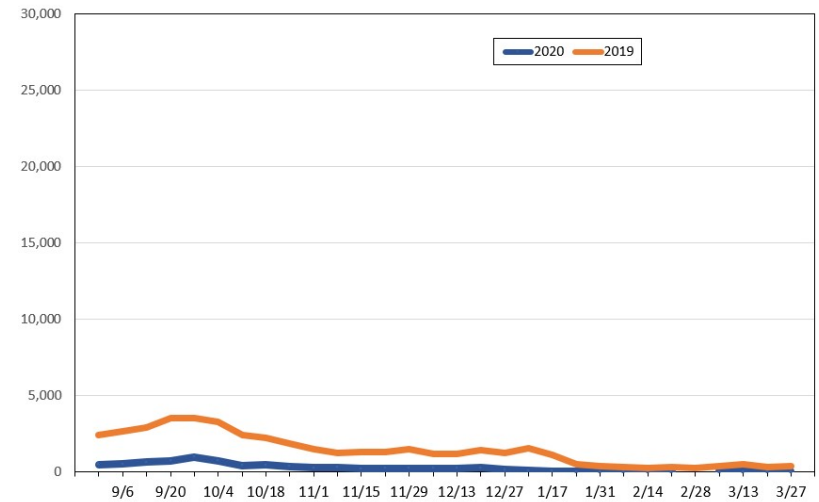
Source: Global Agency Pro, as of August 23, 2020

Travel Agency Weekly Bookings for Future Travel to Hawai'i as of August 23, 2020
Canada



Source: Global Agency Pro, as of August 23, 2020

Travel Agency Weekly Bookings for Future Travel to Hawai'i as of August 23, 2020
Australia



Source: Global Agency Pro, as of August 23, 2020