

HTA COVID-19 UPDATE

(Issued: 8/26/20 @ 5:00pm)

Novel Coronavirus in Hawaii

COVID-19 Positive* Cases

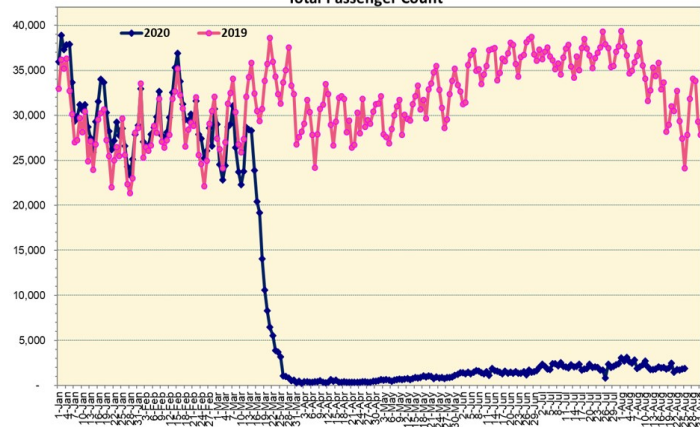
Cumulative totals as of 12:00 noon on August 26, 2020

Statewide	Total
Total Cases	7260 (277 new)
Released from Isolation†	2288
Required Hospitalization	444
Deaths	51
BY COUNTY	Total
Hawaii County	
Total Cases	243
Released from Isolation†	150
Required Hospitalization	11
Deaths	0
Honolulu County	
Total Cases	6626
Released from Isolation†	1910
Required Hospitalization	390
Deaths	43
Kauai County	
Total Cases	56
Released from Isolation†	53
Required Hospitalization	1
Deaths	0
Maui County	
Total Cases	311
Released from Isolation†	175
Required Hospitalization	40
Deaths	7
HI Residents diagnosed outside of HI	24
County Pending	0

*includes presumptive and confirmed cases, data are preliminary and subject to change; note that CDC provides case counts according to states of residence.

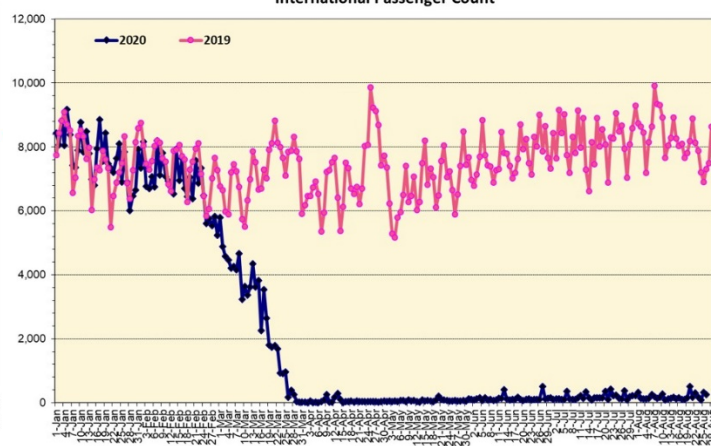
†Isolation should be maintained until at least 3 days (72 hours) after resolution of fever and myalgia without the use of antipyretics OR at least 7 days have passed since symptom onset, whichever is longer.

Total Passenger Count



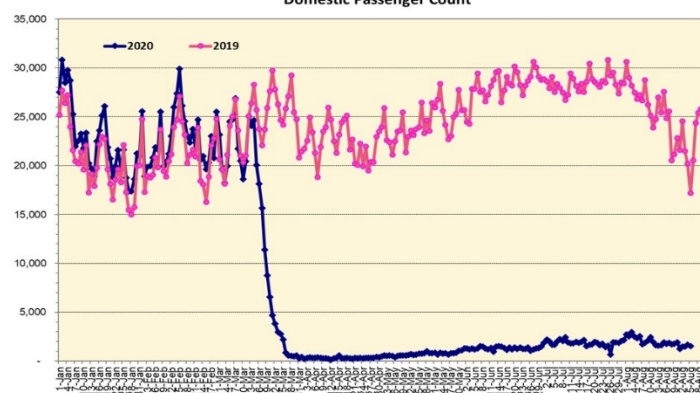
Note: Excludes flights from Canada

International Passenger Count



Note: Excludes flights from Canada

Domestic Passenger Count



Daily Passenger Count Table

08/25/2020	Domestic	International	Total
Oahu	1342	324	1666
Maui	74		74
Island of Hawaii	122		122
Kauai	0		0
State	1538	324	1862

8/26/20 Hawaii Passenger Arrivals by Air Update

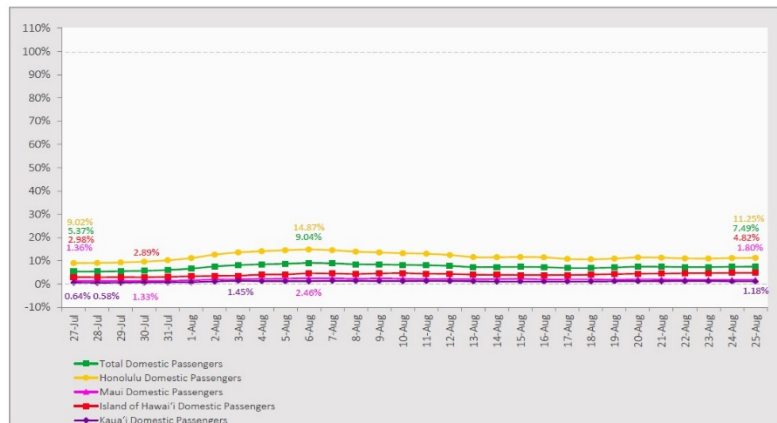
Yesterday, 1829 people arrived in Hawaii. This table shows the number of people who arrived by air from out of state yesterday and does not include interisland travel. This data was collected from the Hawaii DOT new Mandatory Travel Declaration Form.

	Kona	Maui	Oahu	Lihue	Total
Crew	16	15	123		154
Transit		1	193		194
Military			89		89
Exempt			121		121
Relocate to Hawaii	14	7	160		181
Returning Resident	71	46	560		677
Visitor	36	20	357		413
Grand Total	137	89	1603	0	1829
Flights	3	2	26	0	31

Market Impact Update: <https://www.dropbox.com/8/26/20 HTA COVID19 Update>

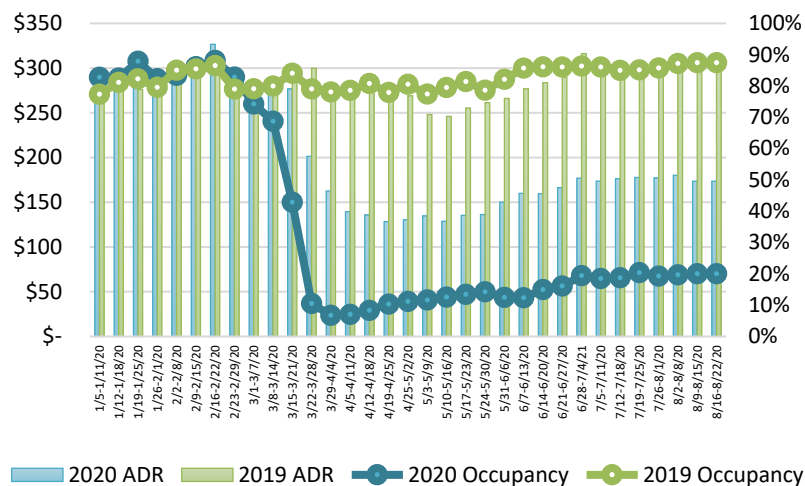
7-Day Domestic by Island Moving Average Daily Passenger Volume

2020 Volume as Percentage of 2019 Volume
Through August 25, 2020



Source: HVCB analysis based on data from DBEDT
Note: Passenger volume figures include both visitors and residents.

State of Hawai'i Hotel Performance by Week - 2020 vs 2019



Source: STR, Inc. © Copyright 2020 Hawai'i Tourism Authority

Hawaii Hotel Performance Info:

For the week of August 16 – August 22, 2020

	Occupancy	ADR	RevPAR
State of Hawaii	22.4%	\$ 153.74	\$ 34.41
Oahu	26.5%	\$ 154.09	\$ 40.90
Maui County	16.1%	\$ 169.59	\$ 27.24
Kauai County	13.0%	\$ 165.23	\$ 21.42
Island of Hawaii	22.5%	\$ 128.65	\$ 28.94

Domestic by Island Month-to-Date and Year-to-Date Daily Passenger Volume

2020 Volume versus 2019 Volume
Through August 25, 2020

August 2020 (Month-to-Date through August 25)

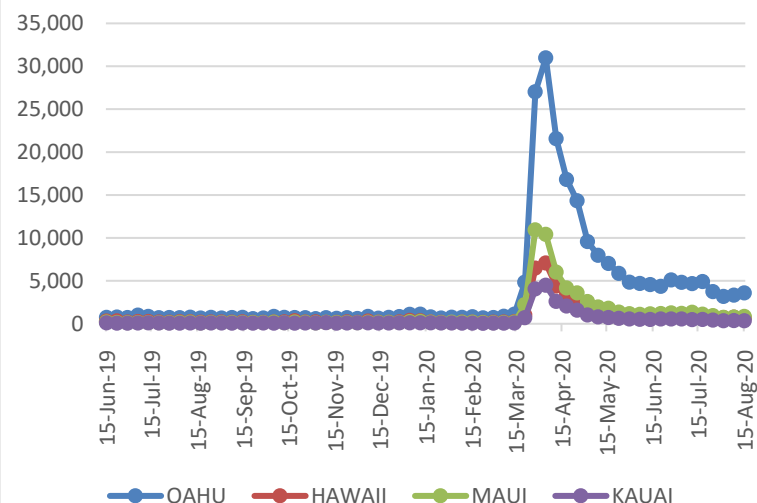
	2020	2019	Volume Change	Percent Change
Honolulu	41,839	346,578	-304,739	-87.9%
Maui County	3,537	170,507	-166,970	-97.9%
Island of Hawai'i	3,056	72,624	-69,568	-95.8%
Kaua'i	651	54,616	-53,965	-98.8%
Total	49,083	644,325	-595,242	-92.4%

2020 (Year-to-Date through August 25)

	2020	2019	Volume Change	Percent Change
Honolulu	1,119,208	3,069,213	-1,950,005	-63.5%
Maui County	452,819	1,500,852	-1,048,033	-69.8%
Island of Hawai'i	225,258	684,651	-459,393	-67.1%
Kaua'i	150,931	515,755	-364,824	-70.7%
Total	1,948,216	5,770,471	-3,822,256	-66.2%

Source: HVCB analysis based on data from DBEDT
Note: Passenger volume figures include both visitors and residents. Total includes other international passengers. 2020 includes one additional day due to Leap Year (February 29th, 2020).

2020 Initial Weekly Unemployment Claims by Island



Weekly Unemployment Initial Claims: August 15, 2020

State of Hawaii	5,536
C&C of Oahu	3,577
Hawaii County	656
Maui County	832
Kauai County	341
Agent (filed in Hawaii against another state)	130

News Highlights

August 26, 2020

Hawaii News Now: [60,000 free coronavirus tests will be offered to residents. Here's how to get one](#)

Hawaii News Now: [Hawaii behind schedule on app to track quarantined travelers](#)

Honolulu Star-Advertiser: [Waikiki hotels agree to house those under quarantine](#)

KHON2: [Hawaii county adopts eleventh emergency rule](#)

KHON2: [Hotel contracted to isolate and quarantine COVID-19 positive people](#)

KHON2: [Aug. 24: 2,116 passengers, 29 flights land in Hawaii](#)

KITV4: [Oahu issued stay-at-home order for at least two weeks](#)

The New York Times: [New Virus Hot Spots: U.S. Islands from Hawaii to Puerto Rico](#)

ABC News: [Hawaii reinstates strict Oahu shutdown as coronavirus cases surge](#)

Helpful Resources

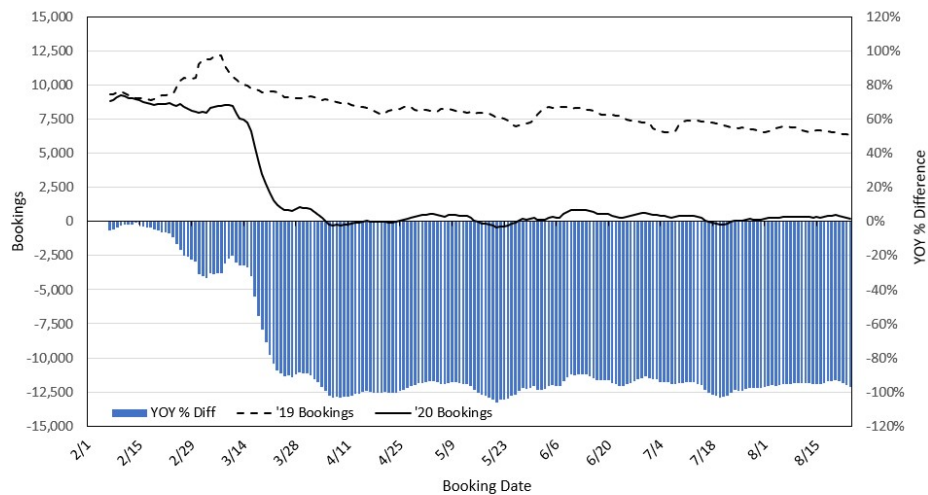
Department of Health
<https://hawaiicovid19.com/>

Department of Health
<https://health.hawaii.gov/docd/advisories/novel-coronavirus-2019>

Dept. of Business, Economic Development & Tourism
<https://dbedt.hawaii.gov/economic/covid19/>

Department of Transportation
<https://hidot.hawaii.gov/coronavirus/>

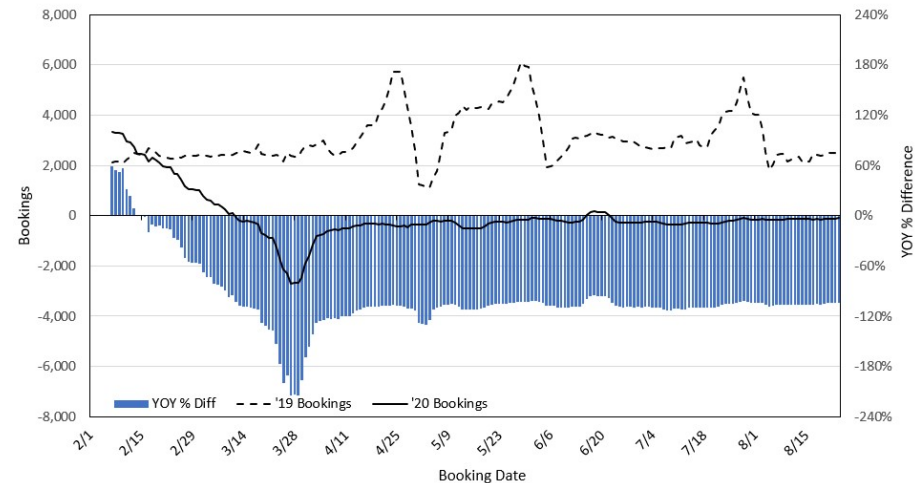
Travel Agency Bookings to Hawaii for Future Arrivals* Based on a 7-day Moving Average, 2020 vs 2019 U.S.



*Future Arrivals refers to all arrivals that are 'future' relative to the referenced booking date.
Source: Global Agency Pro

Update: Aug 24, 2020

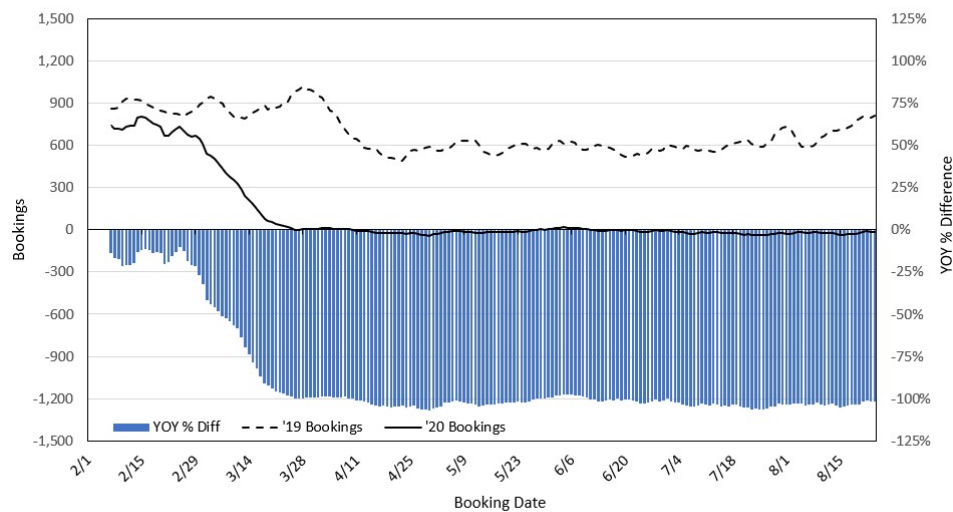
Travel Agency Bookings to Hawaii for Future Arrivals* Based on a 7-day Moving Average, 2020 vs 2019 Japan



*Future Arrivals refers to all arrivals that are 'future' relative to the referenced booking date.
Source: Global Agency Pro

Update: Aug 24, 2020

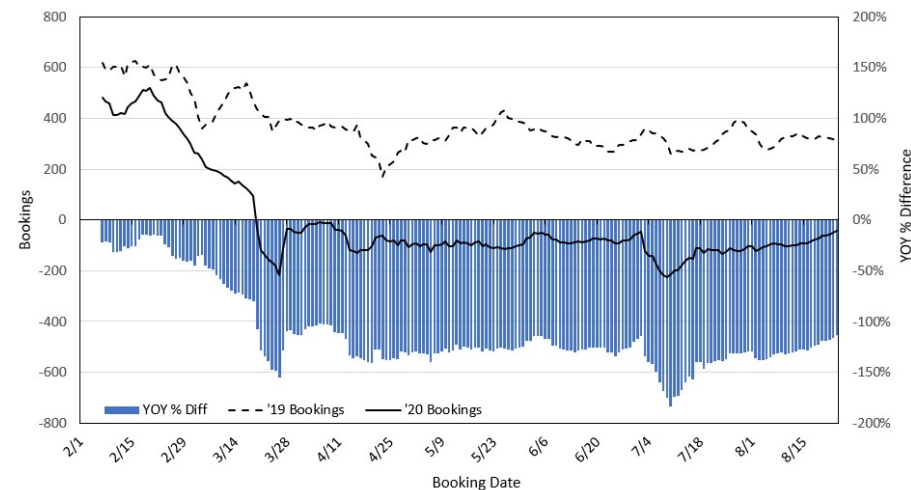
Travel Agency Bookings to Hawaii for Future Arrivals* Based on a 7-day Moving Average, 2020 vs 2019 Canada



*Future Arrivals refers to all arrivals that are 'future' relative to the referenced booking date.
Source: Global Agency Pro

Update: Aug 24, 2020

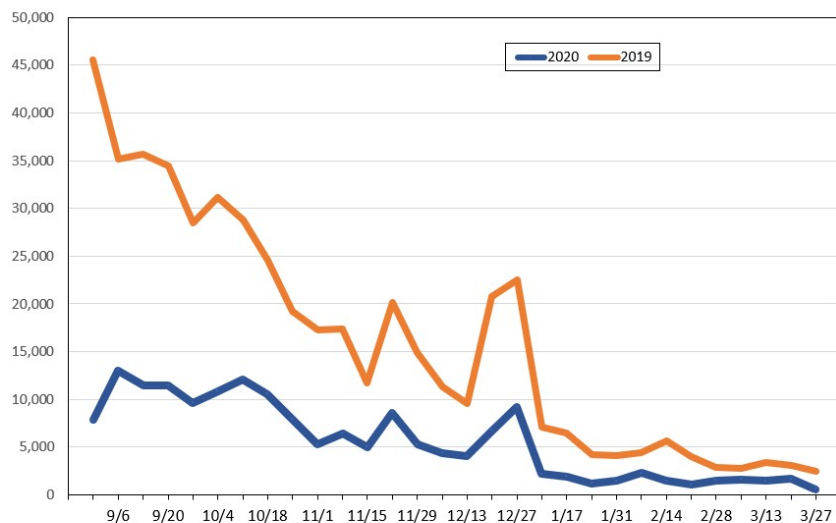
Travel Agency Bookings to Hawaii for Future Arrivals* Based on a 7-day Moving Average, 2020 vs 2019 Australia



*Future Arrivals refers to all arrivals that are 'future' relative to the referenced booking date.
Source: Global Agency Pro

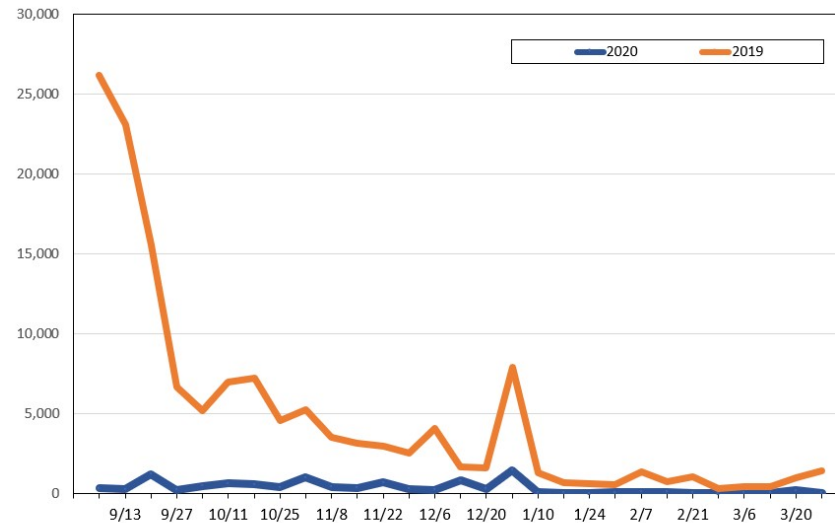
Update: Aug 24, 2020

Travel Agency Weekly Bookings for Future Travel to Hawai'i as of August 24, 2020
U.S.



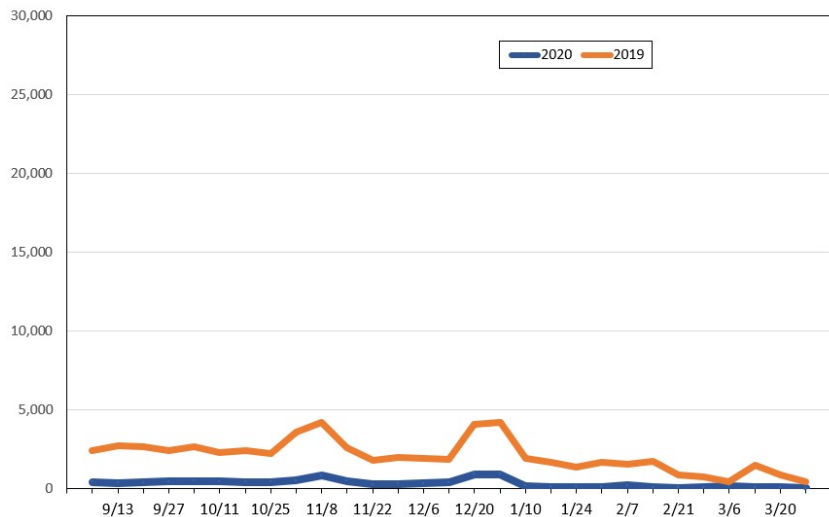
Source: Global Agency Pro, as of August 24, 2020

Travel Agency Weekly Bookings for Future Travel to Hawai'i as of August 24, 2020
Japan



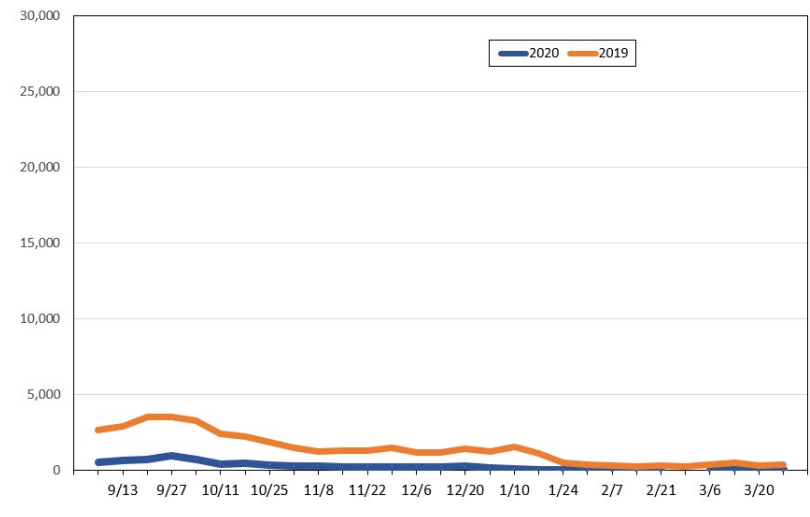
Source: Global Agency Pro, as of August 24, 2020

Travel Agency Weekly Bookings for Future Travel to Hawai'i as of August 24, 2020
Canada



Source: Global Agency Pro, as of August 24, 2020

Travel Agency Weekly Bookings for Future Travel to Hawai'i as of August 24, 2020
Australia



Source: Global Agency Pro, as of August 24, 2020