

# HTA COVID-19 UPDATE

(Issued: 8/27/20 @ 3:30pm)

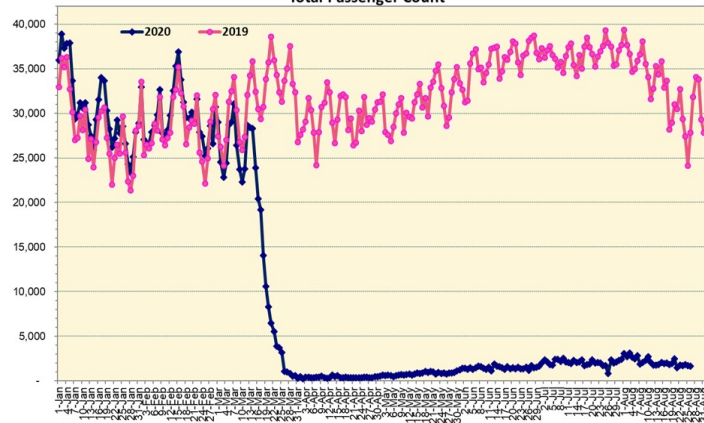
## Novel Coronavirus in Hawaii

COVID-19 Positive\* Cases

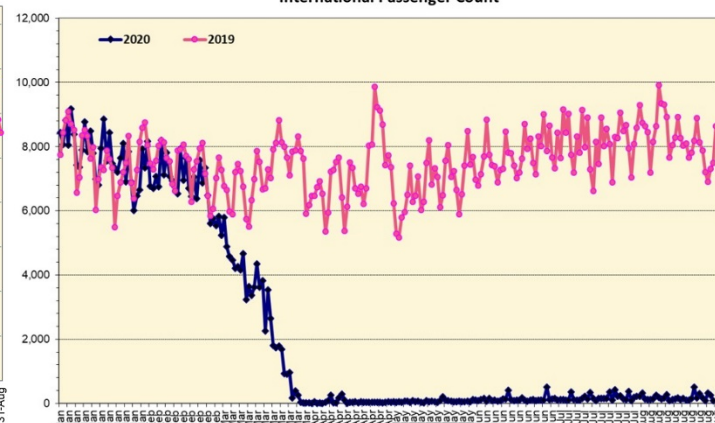
Cumulative totals as of 12:00 noon on August 27, 2020

Total Passenger Count

International Passenger Count

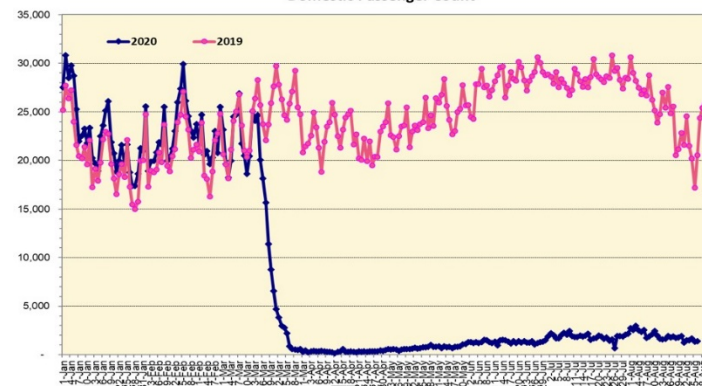


Note: Excludes flights from Canada



Note: Excludes flights from Canada

Domestic Passenger Count



### Daily Passenger Count Table

| 08/26/2020       | Domestic | International | Total |
|------------------|----------|---------------|-------|
| Oahu             | 1260     | 256           | 1516  |
| Maui             | 79       |               | 79    |
| Island of Hawaii | 53       |               | 53    |
| Kauai            | 0        |               | 0     |
| State            | 1392     | 256           | 1648  |

### 8/27/20 Hawaii Passenger Arrivals by Air Update

Yesterday, 1695 people arrived in Hawaii. This table shows the number of people who arrived by air from out of state yesterday and does not include interisland travel. This data was collected from the Hawaii DOT new Mandatory Travel Declaration Form.

|                    | Kona      | Maui      | Oahu        | Lihue    | Total       |
|--------------------|-----------|-----------|-------------|----------|-------------|
| Crew               | 11        | 14        | 140         |          | 165         |
| Transit            |           |           | 217         |          | 217         |
| Military           |           |           | 120         |          | 120         |
| Exempt             |           |           | 142         |          | 142         |
| Relocate to Hawaii |           | 16        | 90          |          | 106         |
| Returning Resident | 32        | 45        | 471         |          | 548         |
| Visitor            | 20        | 18        | 359         |          | 397         |
| <b>Grand Total</b> | <b>63</b> | <b>93</b> | <b>1539</b> | <b>0</b> | <b>1695</b> |
| <b>Flights</b>     | <b>3</b>  | <b>2</b>  | <b>27</b>   | <b>0</b> | <b>32</b>   |

Market Impact Update: <https://www.dropbox.com/8/27/20 HTA COVID19 Update>

| Statewide                            | Total          |
|--------------------------------------|----------------|
| Total Cases                          | 7566 (306 new) |
| Released from Isolation†             | 2371           |
| Required Hospitalization             | 462            |
| Deaths                               | 55             |
| BY COUNTY                            | Total          |
| Hawaii County                        |                |
| Total Cases                          | 253            |
| Released from Isolation†             | 157            |
| Required Hospitalization             | 11             |
| Deaths                               | 0              |
| Honolulu County                      |                |
| Total Cases                          | 6915           |
| Released from Isolation†             | 1984           |
| Required Hospitalization             | 407            |
| Deaths                               | 47             |
| Kauai County                         |                |
| Total Cases                          | 56             |
| Released from Isolation†             | 54             |
| Required Hospitalization             | 1              |
| Deaths                               | 0              |
| Maui County                          |                |
| Total Cases                          | 318            |
| Released from Isolation†             | 176            |
| Required Hospitalization             | 41             |
| Deaths                               | 7              |
| HI Residents diagnosed outside of HI | 24             |
| County Pending                       | 0              |

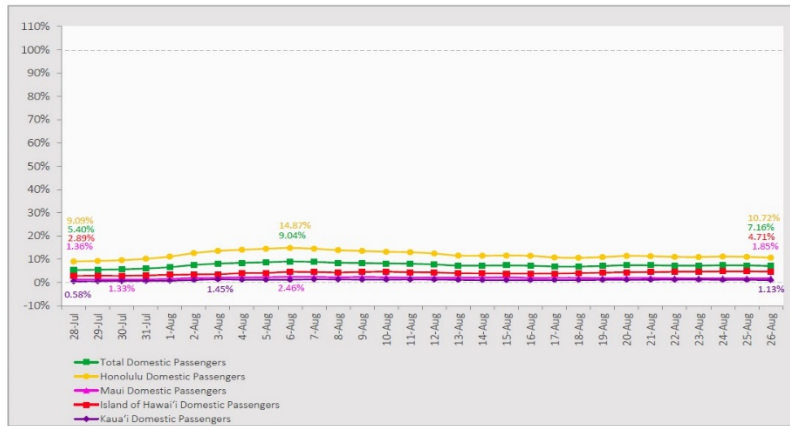
\*includes presumptive and confirmed cases, data are preliminary and subject to change; note that CDC provides case counts according to states of residence.

†Isolation should be maintained until at least 3 days (72 hours) after resolution of fever and myalgia without the use of antipyretics OR at least 7 days have passed since symptom onset, whichever is longer.

## 7-Day Domestic by Island Moving Average Daily Passenger Volume

2020 Volume as Percentage of 2019 Volume

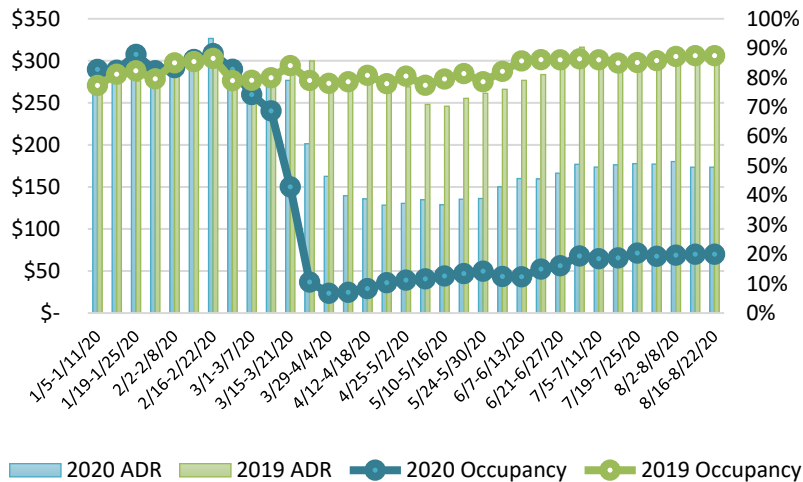
Through August 26, 2020



Source: HVCB analysis based on data from DBEDT

Note: Passenger volume figures include both visitors and residents.

## State of Hawai'i Hotel Performance by Week - 2020 vs 2019



Source: STR, Inc. © Copyright 2020 Hawai'i Tourism Authority

## Hawaii Hotel Performance Info:

For the week of August 16 – August 22, 2020

|                         | Occupancy | ADR       | RevPAR   |
|-------------------------|-----------|-----------|----------|
| <b>State of Hawaii</b>  | 22.4%     | \$ 153.74 | \$ 34.41 |
| <b>Oahu</b>             | 26.5%     | \$ 154.09 | \$ 40.90 |
| <b>Maui County</b>      | 16.1%     | \$ 169.59 | \$ 27.24 |
| <b>Kauai County</b>     | 13.0%     | \$ 165.23 | \$ 21.42 |
| <b>Island of Hawaii</b> | 22.5%     | \$ 128.65 | \$ 28.94 |

## Domestic by Island Month-to-Date and Year-to-Date Daily Passenger Volume

2020 Volume versus 2019 Volume

Through August 26, 2020

August 2020 (Month-to-Date through August 26)

|                   | 2020          | 2019           | Volume Change   | Percent Change |
|-------------------|---------------|----------------|-----------------|----------------|
| Honolulu          | 42,926        | 358,315        | -315,389        | -88.0%         |
| Maui County       | 3,616         | 175,582        | -171,966        | -97.9%         |
| Island of Hawai'i | 3,109         | 74,501         | -71,392         | -95.8%         |
| Kaua'i            | 651           | 56,120         | -55,469         | -98.8%         |
| <b>Total</b>      | <b>50,302</b> | <b>664,518</b> | <b>-614,216</b> | <b>-92.4%</b>  |

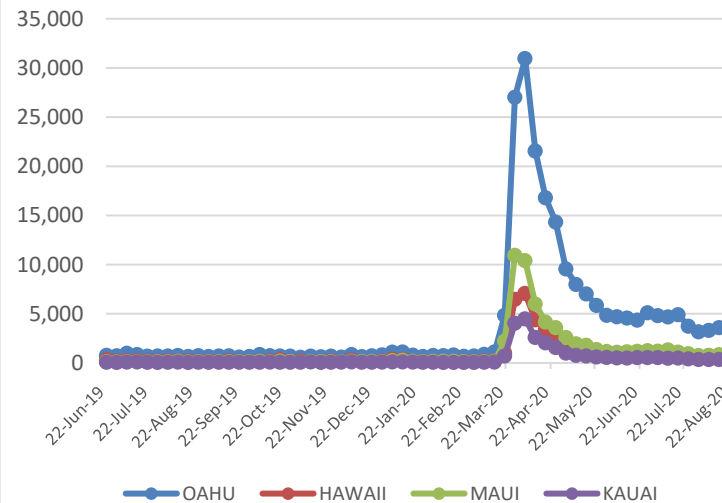
2020 (Year-to-Date through August 26)

|                   | 2020             | 2019             | Volume Change     | Percent Change |
|-------------------|------------------|------------------|-------------------|----------------|
| Honolulu          | 1,120,295        | 3,080,950        | -1,960,655        | -63.6%         |
| Maui County       | 452,898          | 1,505,927        | -1,053,029        | -69.9%         |
| Island of Hawai'i | 225,311          | 686,528          | -461,217          | -67.2%         |
| Kaua'i            | 150,931          | 517,259          | -366,328          | -70.8%         |
| <b>Total</b>      | <b>1,949,435</b> | <b>5,790,664</b> | <b>-3,841,230</b> | <b>-66.3%</b>  |

Source: HVCB analysis based on data from DBEDT

Note: Passenger volume figures include both visitors and residents. Total includes other international passengers. 2020 includes one additional day due to Leap Year (February 29th, 2020).

## 2020 Initial Weekly Unemployment Claims by Island



## Weekly Unemployment Initial Claims: August 22, 2020

|  |       |
|--|-------|
| <b>State of Hawaii</b>                               | 5,785 |
| <b>C&amp;C of Oahu</b>                               | 3,741 |
| <b>Hawaii County</b>                                 | 646   |
| <b>Maui County</b>                                   | 941   |
| <b>Kauai County</b>                                  | 340   |
| <b>Agent</b> (filed in Hawaii against another state) | 127   |

## News Highlights

August 27, 2020

**Honolulu Star-Advertiser:** [Oahu vacation rental owners feeling pain of shutdown](#)

**Hawaii News Now:** [Turnout for city's mass testing program starts strong, but problems already reported](#)

**Hawaii News Now:** [Business Report: Summer report on vacation rentals](#)

**Hawaii News Now:** [Dillingham Saimin closes indefinitely after 64 years in the biz](#)

**KHON2:** [Maui and Hawaii island virus cases linked to known clusters continue to grow, mayors take what-and-see approach](#)

**Hawaii Public Radio:** [The Latest: 2 Deaths, 277 New Cases; Stay-At-Home Order Set For Oahu; Free, Open-To-All Testing](#)

**The Garden Island:** [Kawakami extends COVID-19 emergency](#)

**West Hawaii Today:** [Ironman 70.3 Hawaii canceled, will return in June 2021](#)

**The New York Times:** [Move Over, Sustainable Travel. Regenerative Travel Has Arrived](#)

## Helpful Resources

Department of Health

<https://hawaiicovid19.com/>

Department of Health

<https://health.hawaii.gov/docd/advisories/novel-coronavirus-2019>

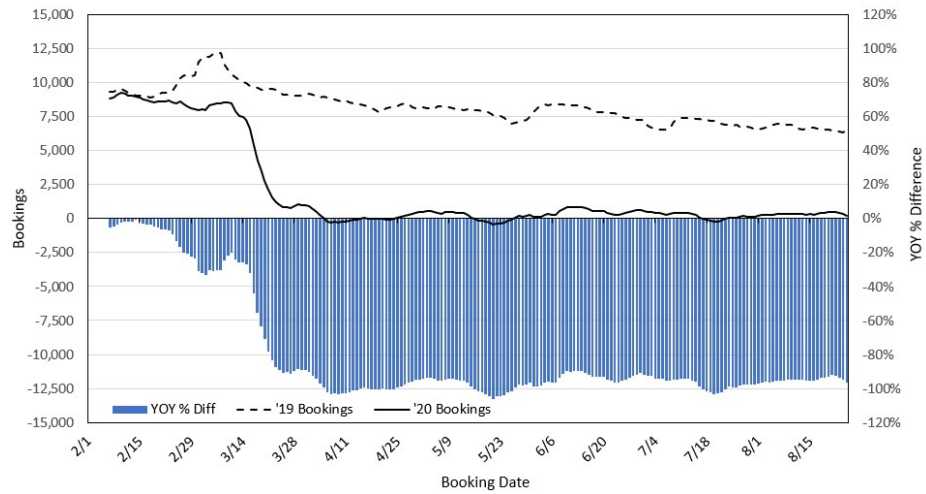
Dept. of Business, Economic Development & Tourism

<https://dbedt.hawaii.gov/economic/covid19/>

Department of Transportation

<https://hidot.hawaii.gov/coronavirus/>

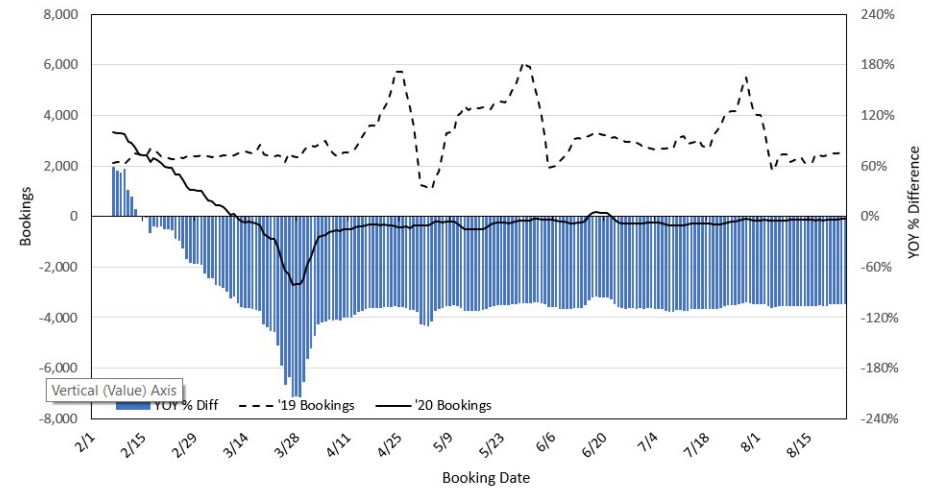
### Travel Agency Bookings to Hawaii for Future Arrivals\* Based on a 7-day Moving Average, 2020 vs 2019 U.S.



\*Future Arrivals refers to all arrivals that are 'future' relative to the referenced booking date.  
Source: Global Agency Pro

Update: Aug 25, 2020

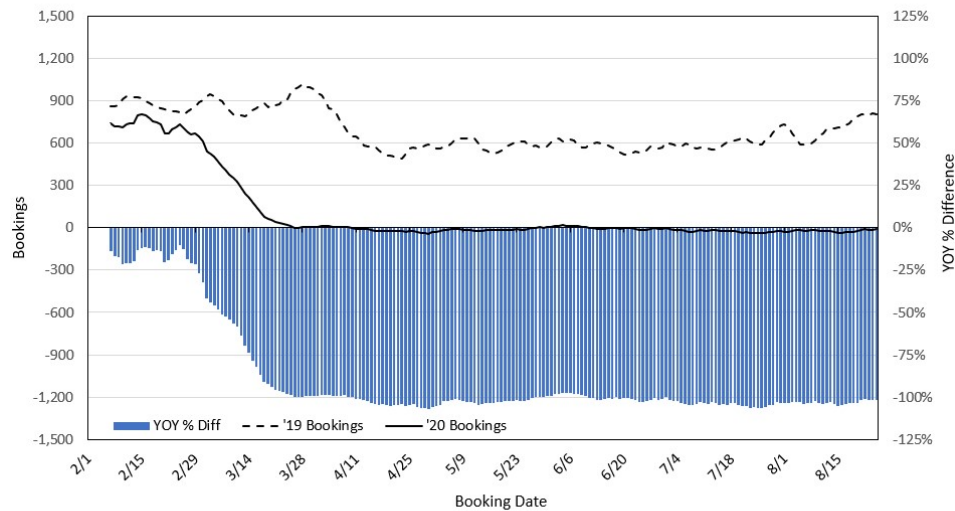
### Travel Agency Bookings to Hawaii for Future Arrivals\* Based on a 7-day Moving Average, 2020 vs 2019 Japan



\*Future Arrivals refers to all arrivals that are 'future' relative to the referenced booking date.  
Source: Global Agency Pro

Update: Aug 25, 2020

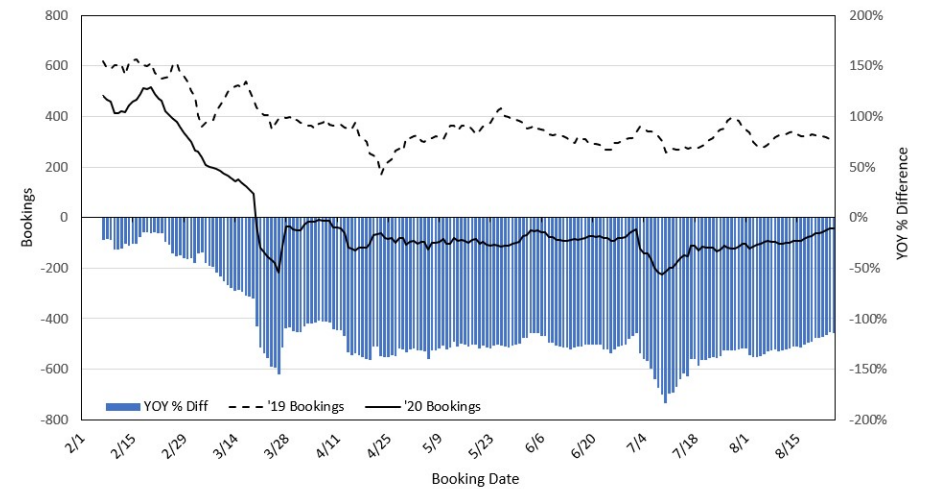
### Travel Agency Bookings to Hawaii for Future Arrivals\* Based on a 7-day Moving Average, 2020 vs 2019 Canada



\*Future Arrivals refers to all arrivals that are 'future' relative to the referenced booking date.  
Source: Global Agency Pro

Update: Aug 25, 2020

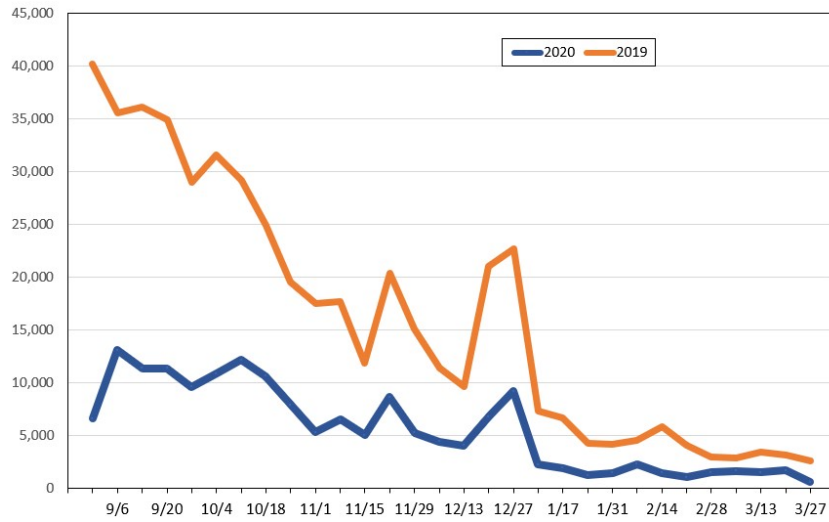
### Travel Agency Bookings to Hawaii for Future Arrivals\* Based on a 7-day Moving Average, 2020 vs 2019 Australia



\*Future Arrivals refers to all arrivals that are 'future' relative to the referenced booking date.  
Source: Global Agency Pro

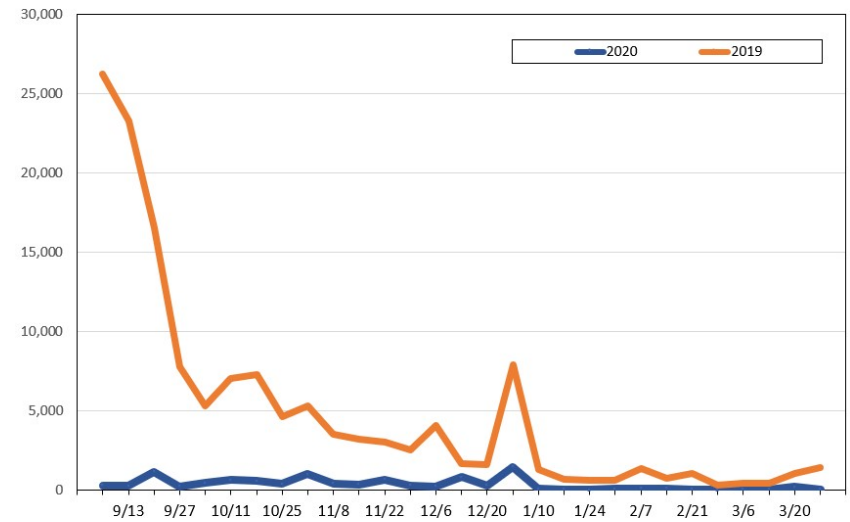
Update: Aug 25, 2020

**Travel Agency Weekly Bookings for Future Travel to Hawai'i as of August 25, 2020**  
U.S.



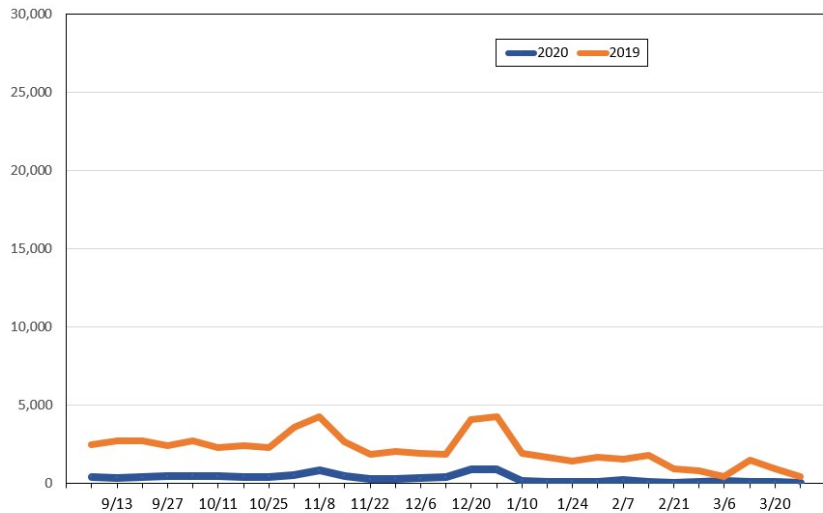
Source: Global Agency Pro, as of August 25, 2020

**Travel Agency Weekly Bookings for Future Travel to Hawai'i as of August 25, 2020**  
Japan



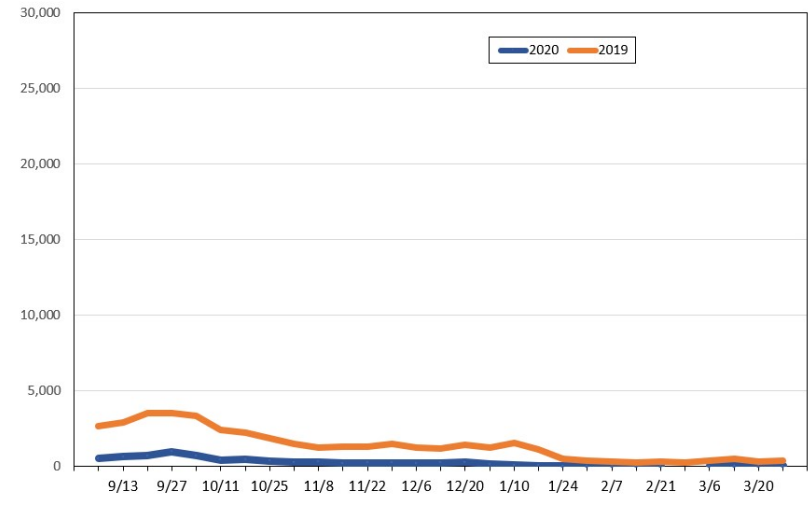
Source: Global Agency Pro, as of August 25, 2020

**Travel Agency Weekly Bookings for Future Travel to Hawai'i as of August 25, 2020**  
Canada



Source: Global Agency Pro, as of August 25, 2020

**Travel Agency Weekly Bookings for Future Travel to Hawai'i as of August 25, 2020**  
Australia



Source: Global Agency Pro, as of August 25, 2020