

HTA COVID-19 UPDATE

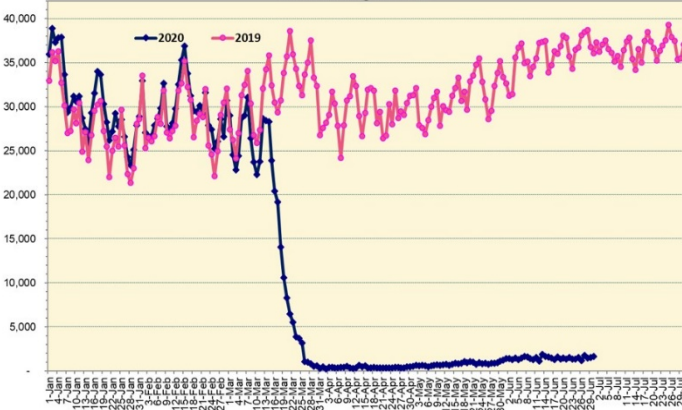
(Issued: 7/1/20 @ 4:30pm)

Novel Coronavirus in Hawaii

COVID-19 Positive* Cases

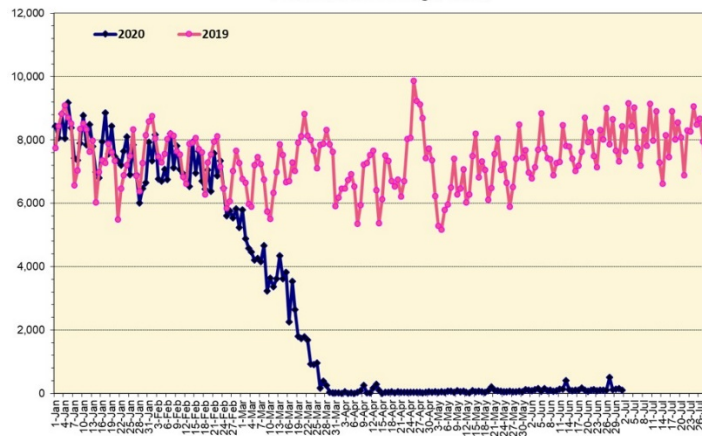
Cumulative totals as of 12:00 noon on July 1, 2020

Total Passenger Count



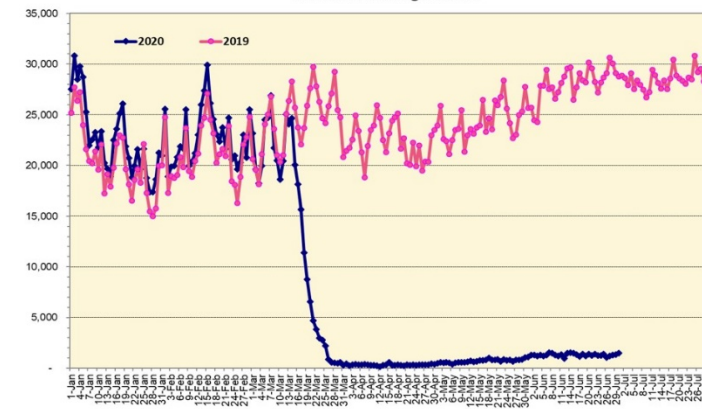
Note: Excludes flights from Canada

International Passenger Count



Note: Excludes flights from Canada

Domestic Passenger Count



Daily Passenger Count Table

06/30/2020	Domestic	International	Total
Oahu	1297	155	1452
Maui	131		131
Island of Hawaii	69		69
Kauai	0		0
State	1497	155	1652

7/1/20 Hawaii Passenger Arrivals by Air Update

Yesterday, 1786 people arrived in Hawaii. This table shows the number of people who arrived by air from out of state yesterday and does not include interisland travel. This data was collected from the Hawaii DOT new Mandatory Travel Declaration Form.

	Kona	Maui	Oahu	Lihue	Total
Crew	11	13	217		241
Transit			166		166
Military			194		194
Exempt			90		90
Relocate to Hawaii	5	11	93		109
Returning Resident	37	74	439		550
Visitor	27	47	362		436
Grand Total	80	145	1561	0	1786
Flights	2	2	14	0	18

Market Impact Update: <https://www.dropbox.com/07/01/20 HTA COVID19 Update>

Statewide	Total
Total Cases	926 (9 new)
Released from Isolation†	741
Required Hospitalization	116
Deaths	18
BY COUNTY	Total
Hawaii County	
Total Cases	87
Released from Isolation†	85
Required Hospitalization	3
Deaths	0
Honolulu County	
Total Cases	659
Released from Isolation†	522
Required Hospitalization	86
Deaths	12
Kauai County	
Total Cases	38
Released from Isolation†	20
Required Hospitalization	1
Deaths	0
Maui County	
Total Cases	125
Released from Isolation†	114
Required Hospitalization	25
Deaths	6
HI Residents diagnosed outside of HI	17
County Pending	0

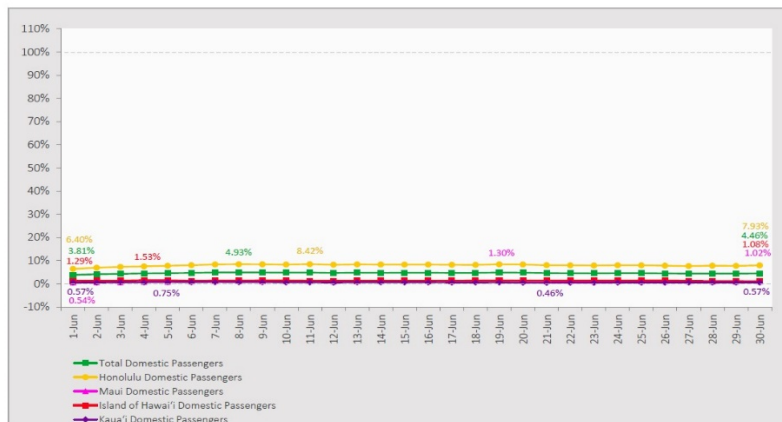
*includes presumptive and confirmed cases, data are preliminary and subject to change; note that CDC provides case counts according to states of residence.

†Isolation should be maintained until at least 3 days (72 hours) after resolution of fever and myalgia without the use of antipyretics OR at least 7 days have passed since symptom onset, whichever is longer.

7-Day Domestic by Island Moving Average Daily Passenger Volume

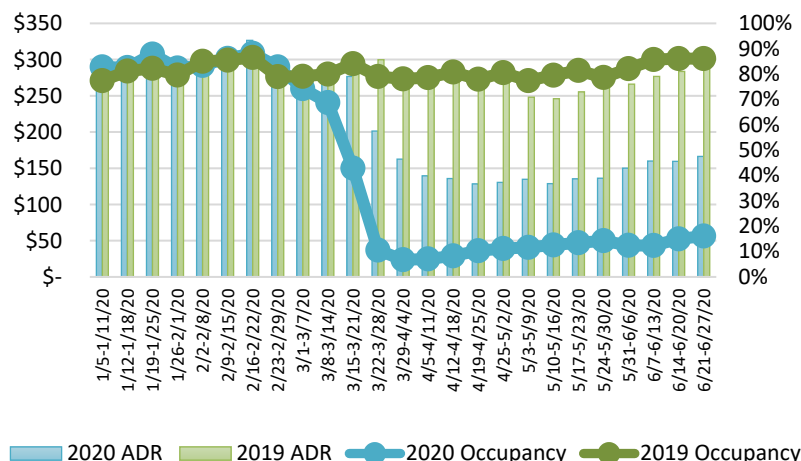
2020 Volume as Percentage of 2019 Volume

Through June 30, 2020



Source: HVCB analysis based on data from DBEDT
Note: Passenger volume figures include both visitors and residents.

State of Hawai'i Hotel Performance by Week - 2020 vs 2019



Source: STR, Inc. © Copyright 2020 Hawai'i Tourism Authority

Hawaii Hotel Performance Info: For the week of June 21 – June 27, 2020

	Occupancy	ADR	RevPAR
State of Hawaii	16.1%	\$ 166.34	\$ 26.77
Oahu	15.0%	\$ 175.31	\$ 26.30
Maui County	10.9%	\$ 151.52	\$ 16.46
Kauai County	21.6%	\$ 163.71	\$ 35.30
Island of Hawai'i	24.4%	\$ 154.80	\$ 37.84

Domestic by Island Month-to-Date and Year-to-Date Daily Passenger Volume

2020 Volume versus 2019 Volume

Through June 30, 2020

June 2020 (Month-to-Date through June 30)

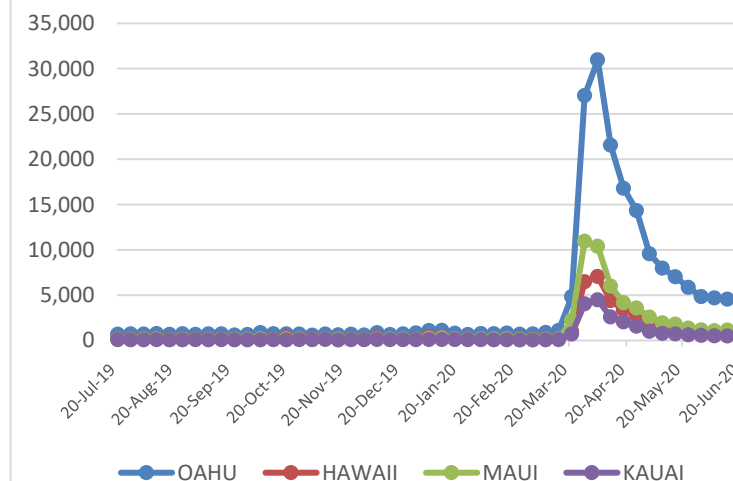
	2020	2019	Volume Change	Percent Change
Honolulu	35,200	430,954	-395,754	-91.8%
Maui County	2,598	229,763	-227,165	-98.9%
Island of Hawai'i	1,299	101,274	-99,975	-98.7%
Kaua'i	431	77,976	-77,545	-99.4%
Total	39,528	839,967	-800,439	-95.3%

2020 (Year-to-Date through June 30)

	2020	2019	Volume Change	Percent Change
Honolulu	1,027,789	2,267,875	-1,240,086	-54.7%
Maui County	445,000	1,089,461	-644,461	-59.2%
Island of Hawai'i	218,965	506,188	-287,223	-56.7%
Kaua'i	149,614	379,628	-230,014	-60.6%
Total	1,841,368	4,243,152	-2,401,784	-56.6%

Source: HVCB analysis based on data from DBEDT
Note: Passenger volume figures include both visitors and residents. Total includes other international passengers. 2020 includes one additional day due to Leap Year (February 29th, 2020).

2020 Initial Weekly Unemployment Claims by Island



Weekly Unemployment Initial Claims: June 20, 2020

State of Hawaii	7,199
C&C of Oahu	4,352
Hawaii County	970
Maui County	1,173
Kauai County	545
Agent (filed in Hawaii against another state)	159

News Highlights

July 1, 2020

Hawaii News Now: [State forges ahead with plan to reopen tourism with testing, despite potential loophole](#)

Honolulu Star-Advertiser: [Hawaii residents OK with shopping, not so much with gyms, survey finds](#)

Honolulu Star-Advertiser: [Editorial: Show your aloha, keep the mask on](#)

Honolulu Star-Advertiser: [2 returning Oahu residents arrested for allegedly violating state's mandatory quarantine](#)

Hawaii News Now: [Kauai partners with Airbnb, travel sites to enforce short-term rental laws](#)

KHON2: [Airlines stepping up mask enforcement on flights](#)

KHON2: [Travel officials work on messaging campaign to inform visitors of state rules](#)

Hawaii Public Radio: [COVID-19 Puts Short-Term Rentals Back Under Microscope](#)

Honolulu Civil Beat: [Lots Of Questions Surround Hawaii's Pre-Travel Testing Program](#)

Pacific Business News: [Hawaii visitor arrivals drop by nearly 100% for second consecutive month](#)

Helpful Resources

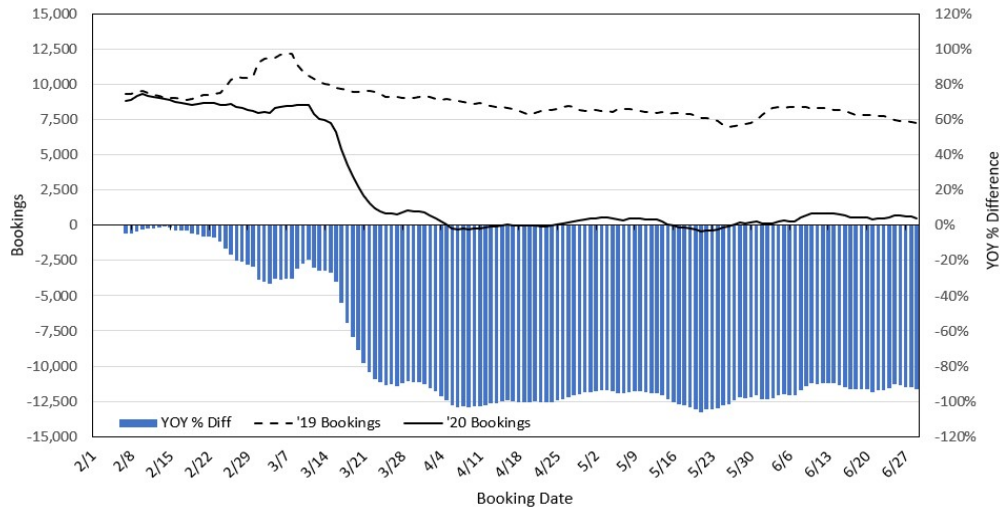
Department of Health
<https://hawaiicovid19.com/>

Department of Health
<https://health.hawaii.gov/docd/advisories/novel-coronavirus-2019>

Dept. of Business, Economic Development & Tourism
<https://dbedt.hawaii.gov/economic/covid19/>

Department of Transportation
<https://hidot.hawaii.gov/coronavirus/>

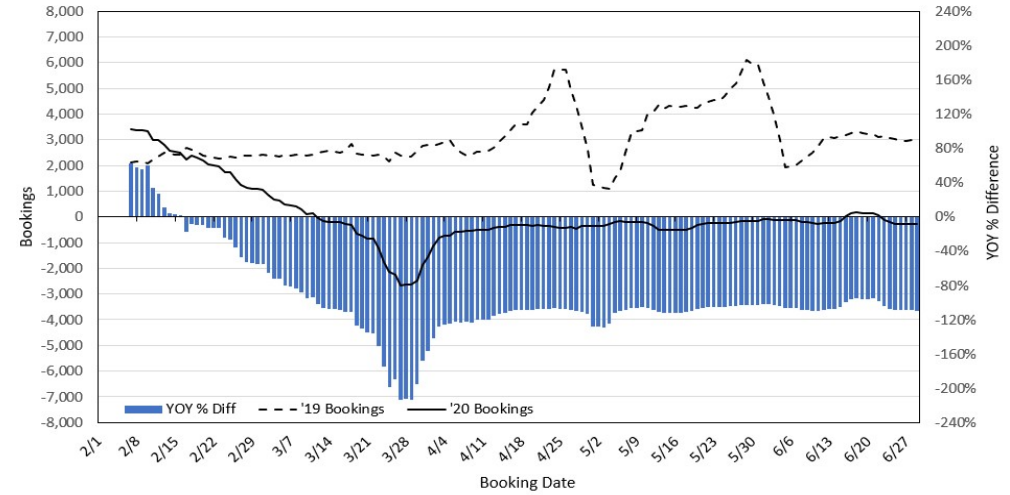
Travel Agency Bookings to Hawaii for Future Arrivals* Based on a 7-day Moving Average, 2020 vs 2019 U.S.



*Future Arrivals refers to all arrivals that are 'future' relative to the referenced booking date.
Source: Global Agency Pro

Update: Jun 29, 2020

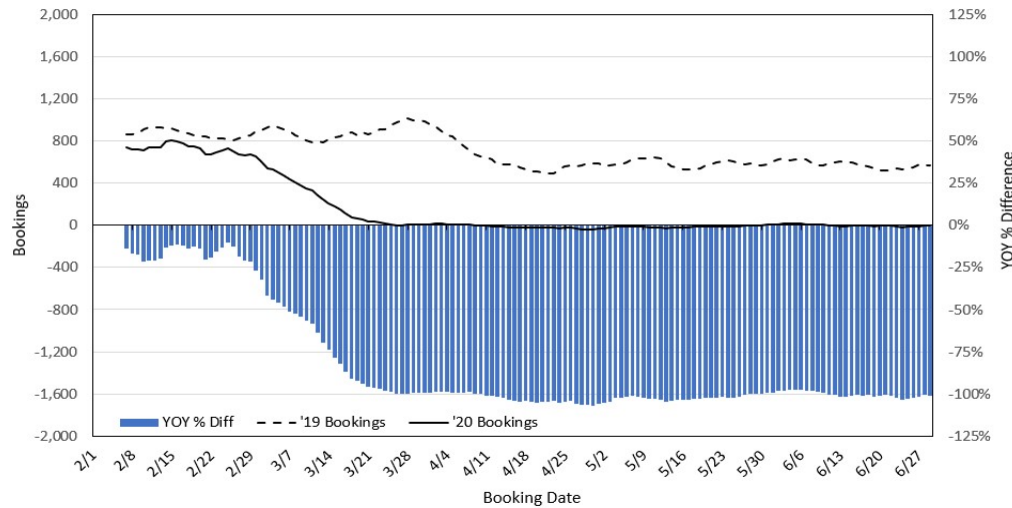
Travel Agency Bookings to Hawaii for Future Arrivals* Based on a 7-day Moving Average, 2020 vs 2019 Japan



*Future Arrivals refers to all arrivals that are 'future' relative to the referenced booking date.
Source: Global Agency Pro

Update: Jun 29, 2020

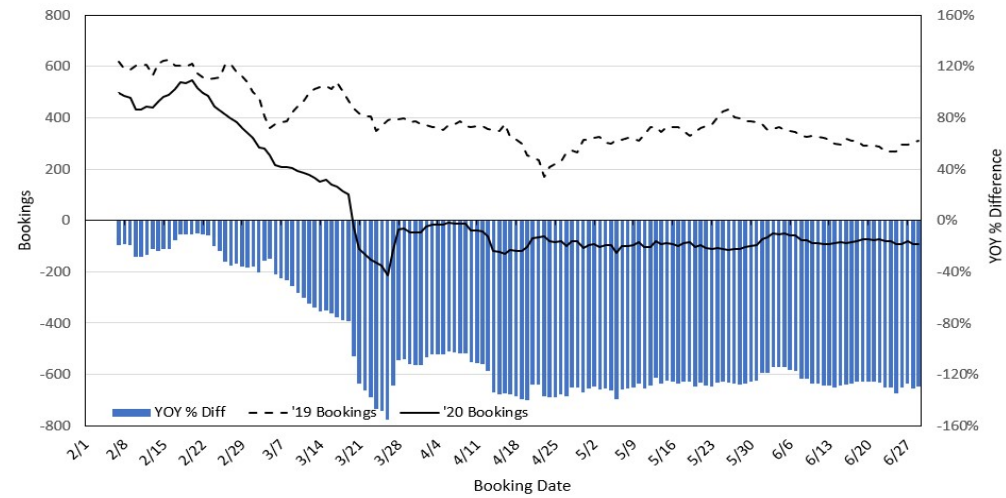
Travel Agency Bookings to Hawaii for Future Arrivals* Based on a 7-day Moving Average, 2020 vs 2019 Canada



*Future Arrivals refers to all arrivals that are 'future' relative to the referenced booking date.
Source: Global Agency Pro

Update: Jun 29, 2020

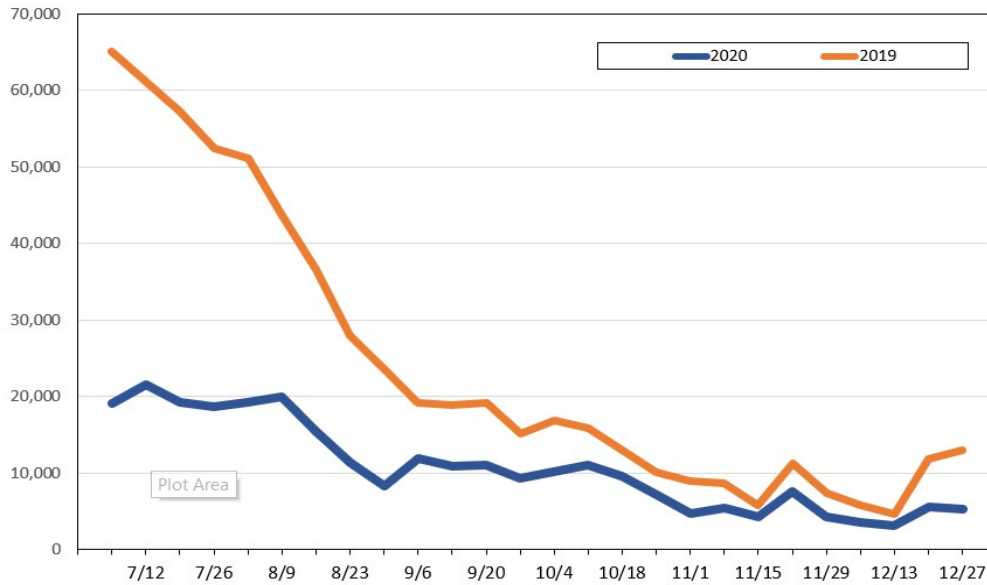
Travel Agency Bookings to Hawaii for Future Arrivals* Based on a 7-day Moving Average, 2020 vs 2019 Australia



*Future Arrivals refers to all arrivals that are 'future' relative to the referenced booking date.
Source: Global Agency Pro

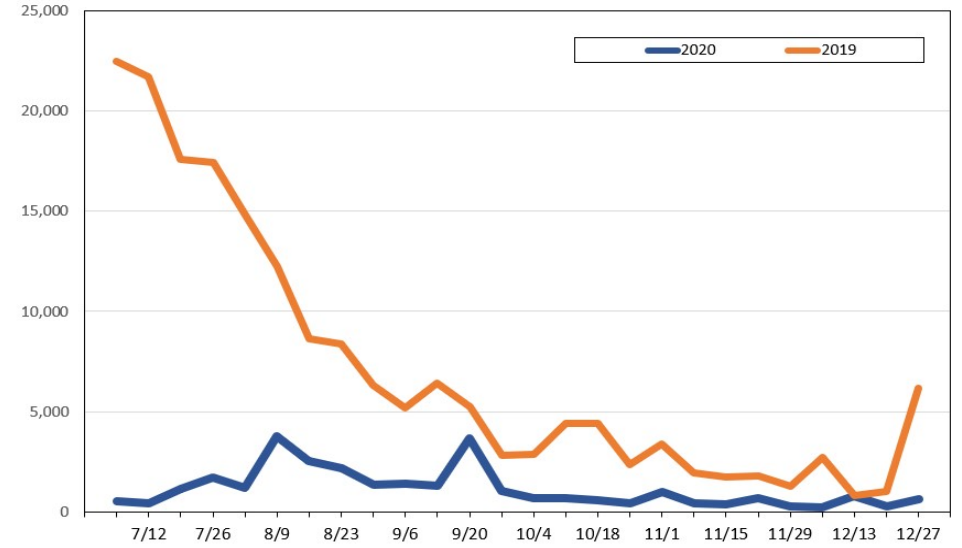
Update: Jun 29, 2020

Travel Agency Bookings for Future Travel to Hawai'i as of June 29, 2020
U.S.



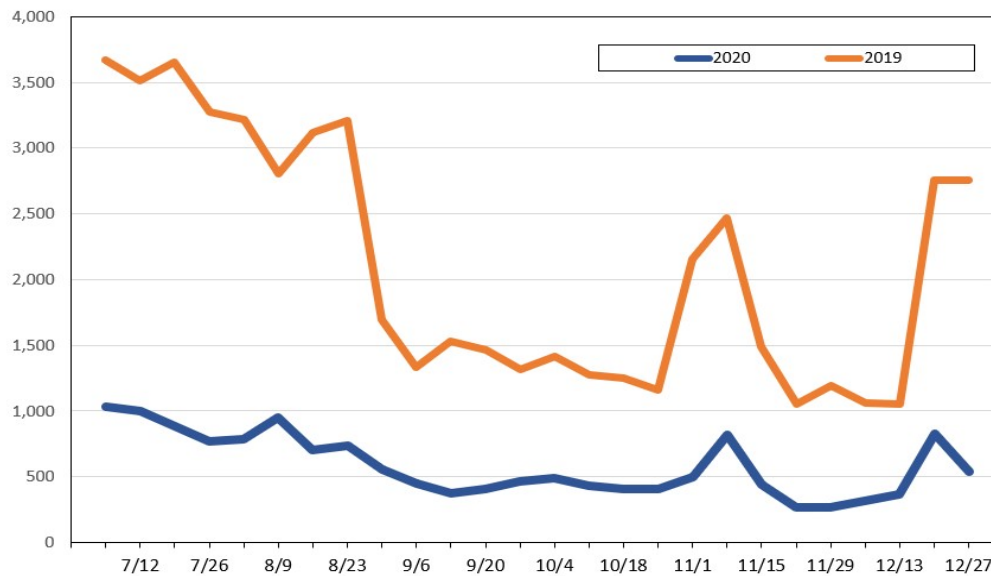
Source: Global Agency Pro, as of June 29, 2020

Travel Agency Bookings for Future Travel to Hawai'i as of June 29, 2020
Japan



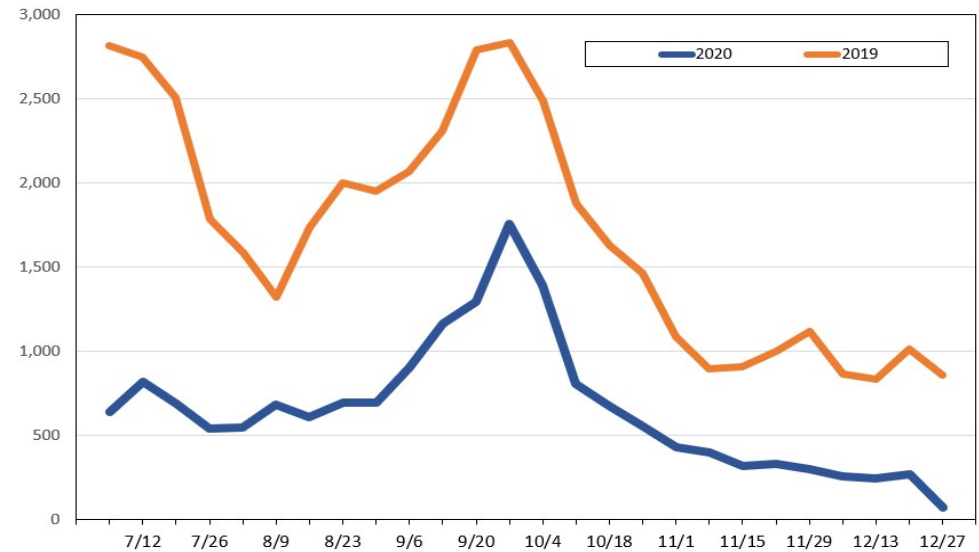
Source: Global Agency Pro, as of June 29, 2020

Travel Agency Bookings for Future Travel to Hawai'i as of June 29, 2020
Canada



Source: Global Agency Pro, as of June 29, 2020

Travel Agency Bookings for Future Travel to Hawai'i as of June 29, 2020
Australia



Source: Global Agency Pro, as of June 29, 2020