

HTA COVID-19 UPDATE

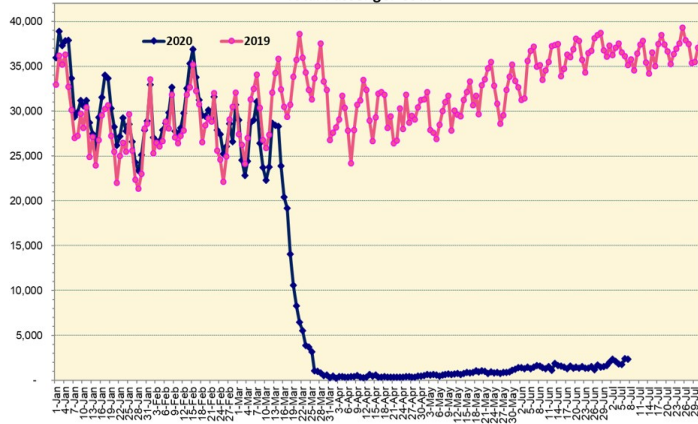
(Issued: 7/8/20 @ 4:00pm)

Novel Coronavirus in Hawaii

COVID-19 Positive* Cases

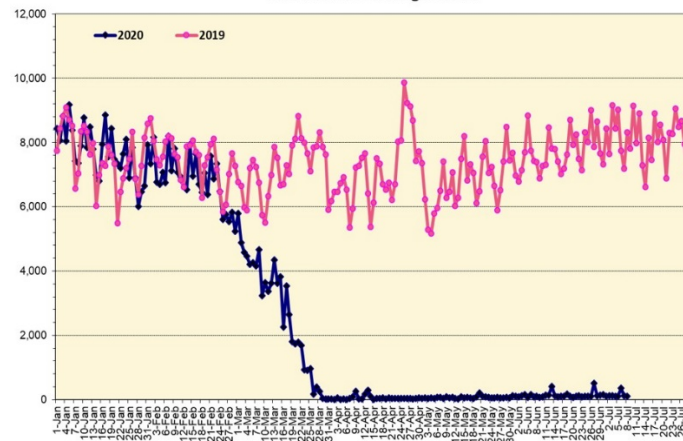
Cumulative totals as of 12:00 noon on July 8, 2020

Total Passenger Count



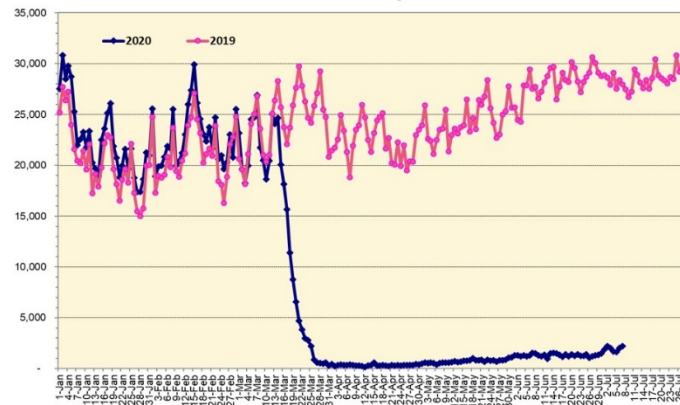
Note: Excludes flights from Canada

International Passenger Count



Note: Excludes flights from Canada

Domestic Passenger Count



Daily Passenger Count Table

07/07/2020	Domestic	International	Total
Oahu	1870	117	1987
Maui	210		210
Island of Hawaii	123		123
Kauai	0		0
State	2203	117	2320

7/8/20 Hawaii Passenger Arrivals by Air Update

Yesterday, 2685 people arrived in Hawaii. This table shows the number of people who arrived by air from out of state yesterday and does not include interisland travel. This data was collected from the Hawaii DOT new Mandatory Travel Declaration Form.

	Kona	Maui	Oahu	Lihue	Total
Crew	7	26	223	6	262
Transit	1		202		203
Military		2	345		347
Exempt			180		180
Relocate to Hawaii	13	23	107	14	157
Returning Resident	58	123	611	23	815
Visitor	51	62	572	36	721
Grand Total	130	236	2240	79	2685
Flights	1	4	18	1	24

Market Impact Update: <https://www.dropbox.com/07/08/20 HTA COVID19 Update>

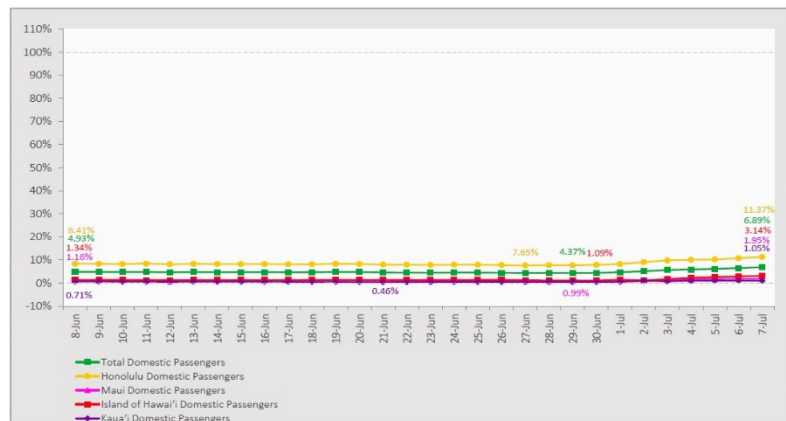
Statewide	Total
Total Cases	1094 (23 new)
Released from Isolation†	811
Required Hospitalization	122
Deaths	19
BY COUNTY	Total
Hawaii County	
Total Cases	96
Released from Isolation†	88
Required Hospitalization	3
Deaths	0
Honolulu County	
Total Cases	808
Released from Isolation†	572
Required Hospitalization	92
Deaths	13
Kauai County	
Total Cases	42
Released from Isolation†	35
Required Hospitalization	1
Deaths	0
Maui County	
Total Cases	130
Released from Isolation†	116
Required Hospitalization	25
Deaths	6
HI Residents diagnosed outside of HI	18
County Pending	0

*includes presumptive and confirmed cases, data are preliminary and subject to change; note that CDC provides case counts according to states of residence.

†Isolation should be maintained until at least 3 days (72 hours) after resolution of fever and myalgia without the use of antipyretics OR at least 7 days have passed since symptom onset, whichever is longer.

7-Day Domestic by Island Moving Average Daily Passenger Volume

2020 Volume as Percentage of 2019 Volume
Through July 7, 2020



Source: HVCB analysis based on data from DBEDT
Note: Passenger volume figures include both visitors and residents.

Domestic by Island Month-to-Date and Year-to-Date Daily Passenger Volume

2020 Volume versus 2019 Volume
Through July 7, 2020

	2020	2019	Volume Change	Percent Change
Honolulu	11,688	102,916	-91,228	-88.6%
Maui County	1,043	54,251	-53,208	-98.1%
Island of Hawai'i	747	24,484	-23,737	-96.9%
Kaua'i	191	18,273	-18,082	-99.0%
Total	13,669	199,924	-186,255	-93.2%

	2020	2019	Volume Change	Percent Change
Honolulu	1,039,477	2,370,791	-1,331,314	-56.2%
Maui County	446,043	1,143,712	-697,669	-61.0%
Island of Hawai'i	219,714	530,672	-310,958	-58.6%
Kaua'i	149,794	397,901	-248,107	-62.4%
Total	1,855,028	4,443,076	-2,588,048	-58.2%

Source: HVCB analysis based on data from DBEDT
Note: Passenger volume figures include both visitors and residents. Total includes other international passengers. 2020 includes one additional day due to Leap Year (February 29th, 2020).

News Highlights

July 8, 2020

Hawaii News Now: [Surge in COVID-19 cases across US raises questions about Hawaii's plan to reopen tourism](#)

Hawaii News Now: [Japanese travel agency extends tour cancellations to Hawaii until Aug. 31](#)

Honolulu Star-Advertiser: [Editorial: Bad time to let down our guard](#)

Honolulu Star-Advertiser: [Kokua Line: Would-be Hawaii travelers have many questions about preflight tests](#)

KHON2: [Hawaii's CVS trans-pacific testing partnership leaves holes for 72-hour window](#)

KHON2: [Mayors to meet with governor on plans to lift travel quarantine amid COVID-19 spike](#)

KHON2: [Health officials see disturbing trend in recent spike of COVID-19 cases](#)

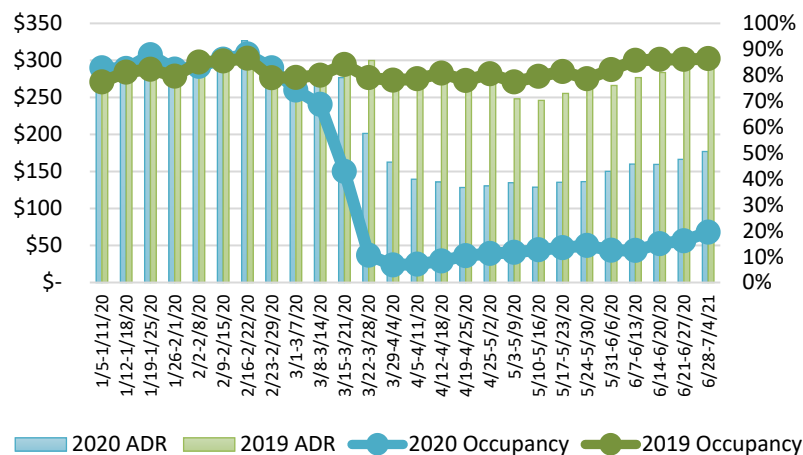
KHON2: [COVID-19 case surge could lead to opening scale-backs](#)

KITV4: [Kauai police arrest Texas man for violating 14-day quarantine](#)

The Garden Island: [KVB offers insights to reopening efforts](#)

West Hawaii Today: [Physician Miscovich says Ige should rethink bypassing quarantine](#)

State of Hawai'i Hotel Performance by Week - 2020 vs 2019



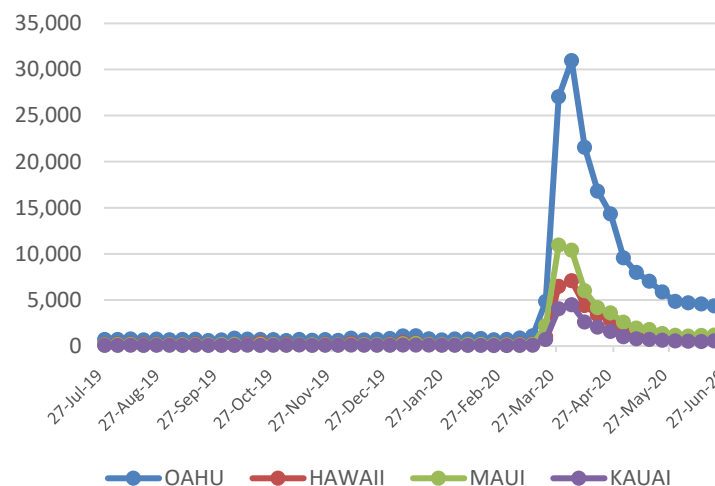
Source: STR, Inc. © Copyright 2020 Hawai'i Tourism Authority

Hawaii Hotel Performance Info:

For the week of June 28 – July 4, 2020

	Occupancy	ADR	RevPAR
State of Hawaii	19.4%	\$ 176.94	\$ 34.38
Oahu	19.4%	\$ 180.77	\$ 35.05
Maui County	11.7%	\$ 186.13	\$ 21.71
Kauai County	21.7%	\$ 165.56	\$ 35.85
Island of Hawaii	29.8%	\$ 167.83	\$ 49.99

2020 Initial Weekly Unemployment Claims by Island



Weekly Unemployment Initial Claims: June 27, 2020

State of Hawaii	8,219
C&C of Oahu	5,090
Hawaii County	1,153
Maui County	1,241
Kauai County	537
Agent (filed in Hawaii against another state)	198

Helpful Resources

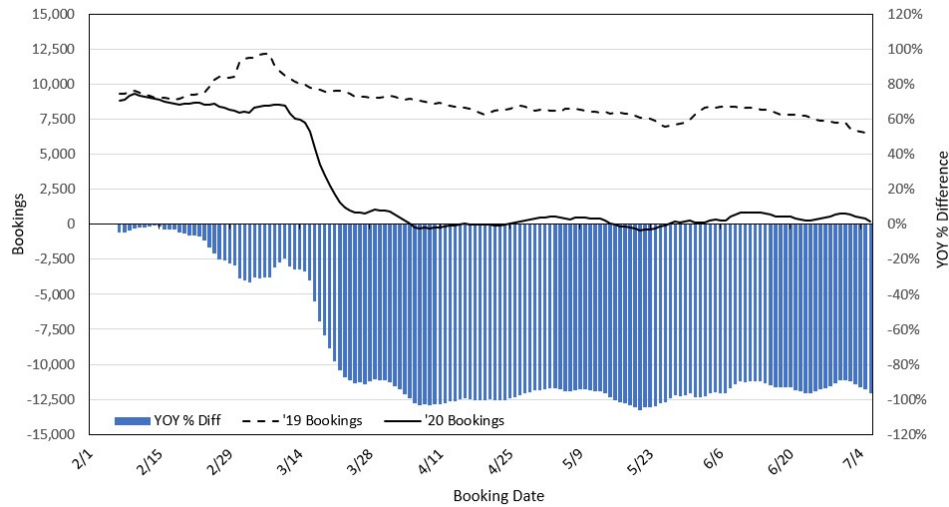
Department of Health
<https://hawaiicovid19.com/>

Department of Health
<https://health.hawaii.gov/docd/advisories/novel-coronavirus-2019>

Dept. of Business, Economic Development & Tourism
<https://dbedt.hawaii.gov/economic/covid19/>

Department of Transportation
<https://hidot.hawaii.gov/coronavirus/>

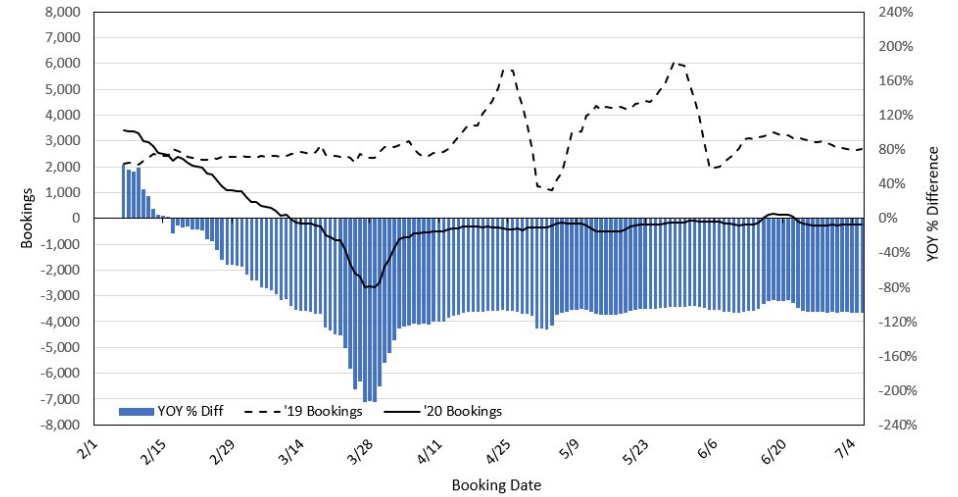
Travel Agency Bookings to Hawaii for Future Arrivals* Based on a 7-day Moving Average, 2020 vs 2019 U.S.



*Future Arrivals refers to all arrivals that are 'future' relative to the referenced booking date.
Source: Global Agency Pro

Update: Jul 6, 2020

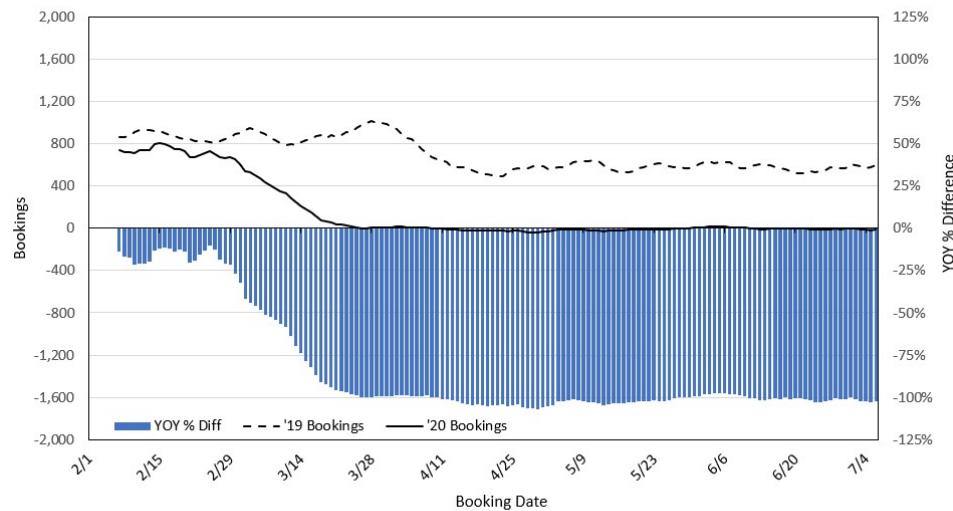
Travel Agency Bookings to Hawaii for Future Arrivals* Based on a 7-day Moving Average, 2020 vs 2019 Japan



*Future Arrivals refers to all arrivals that are 'future' relative to the referenced booking date.
Source: Global Agency Pro

Update: Jul 6, 2020

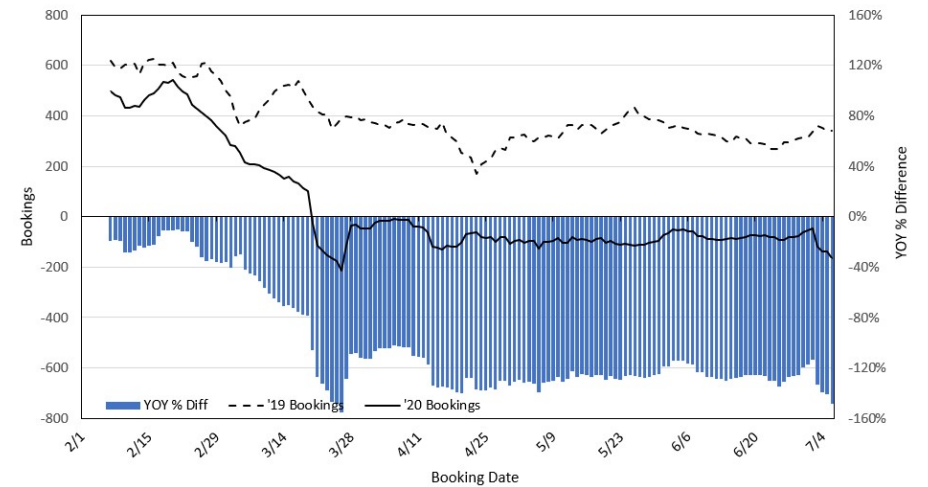
Travel Agency Bookings to Hawaii for Future Arrivals* Based on a 7-day Moving Average, 2020 vs 2019 Canada



*Future Arrivals refers to all arrivals that are 'future' relative to the referenced booking date.
Source: Global Agency Pro

Update: Jul 6, 2020

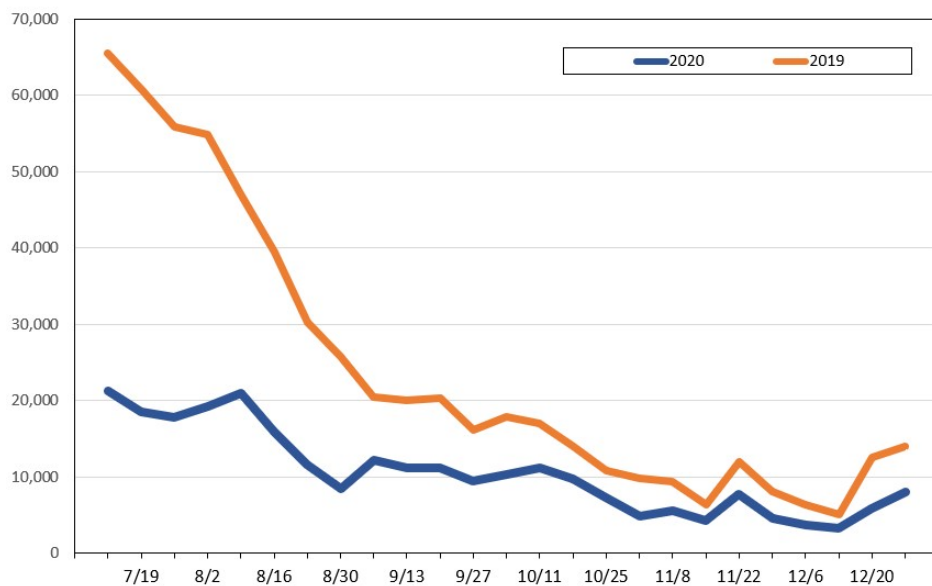
Travel Agency Bookings to Hawaii for Future Arrivals* Based on a 7-day Moving Average, 2020 vs 2019 Australia



*Future Arrivals refers to all arrivals that are 'future' relative to the referenced booking date.
Source: Global Agency Pro

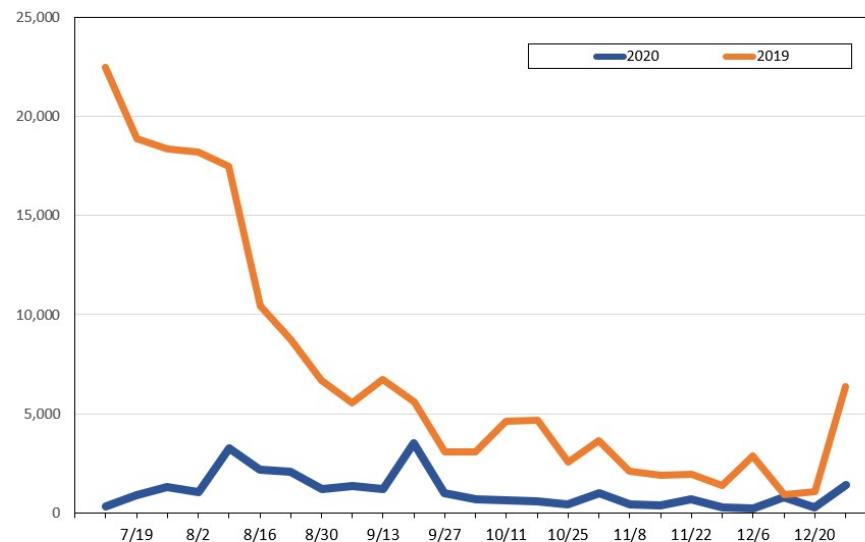
Update: Jul 6, 2020

Travel Agency Bookings for Future Travel to Hawai'i as of July 6, 2020
U.S.



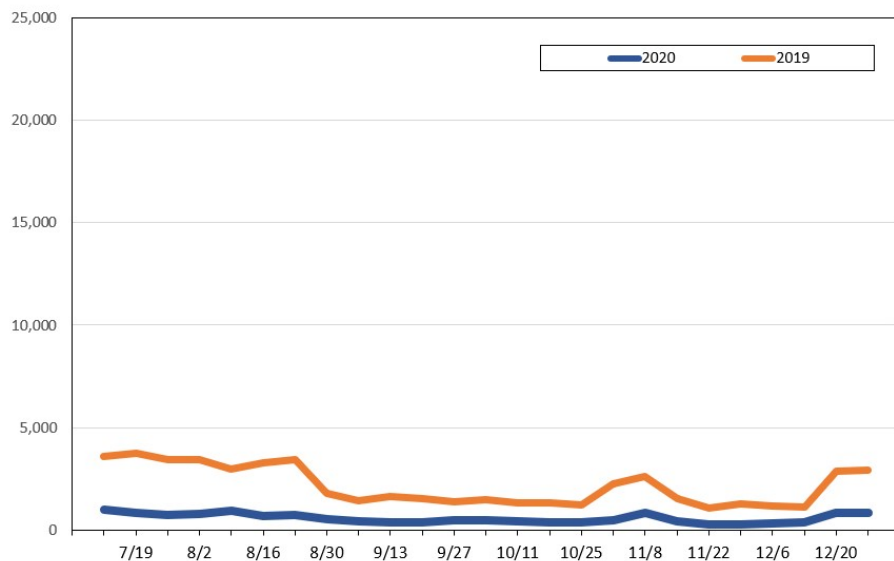
Source: Global Agency Pro, as of July 6, 2020

Travel Agency Bookings for Future Travel to Hawai'i as of July 6, 2020
Japan



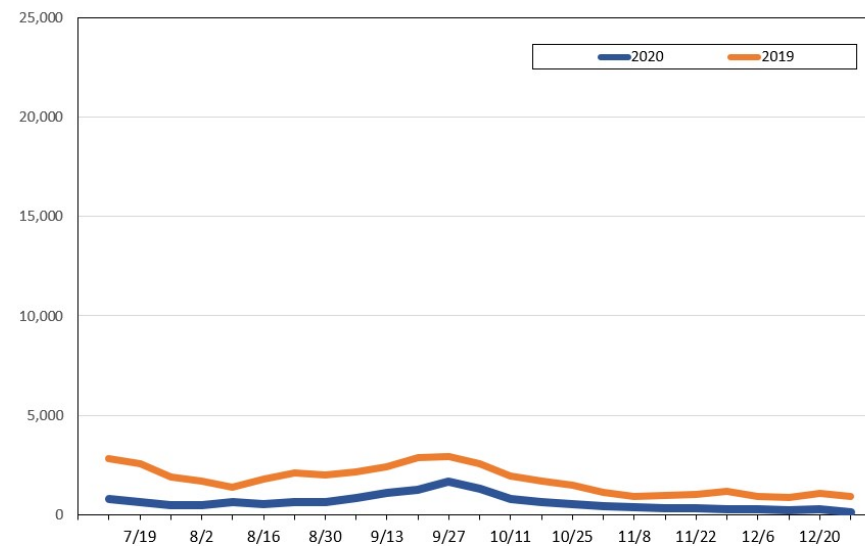
Source: Global Agency Pro, as of July 6, 2020

Travel Agency Bookings for Future Travel to Hawai'i as of July 6, 2020
Canada



Source: Global Agency Pro, as of July 6, 2020

Travel Agency Bookings for Future Travel to Hawai'i as of July 6, 2020
Australia



Source: Global Agency Pro, as of July 6, 2020