

HTA COVID-19 UPDATE

(Issued: 7/9/20 @ 4:00pm)

Novel Coronavirus in Hawaii

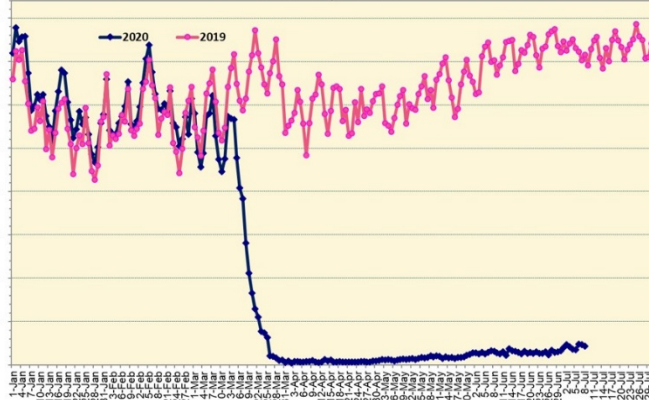
COVID-19 Positive* Cases

Cumulative totals as of 12:00 noon on July 9, 2020

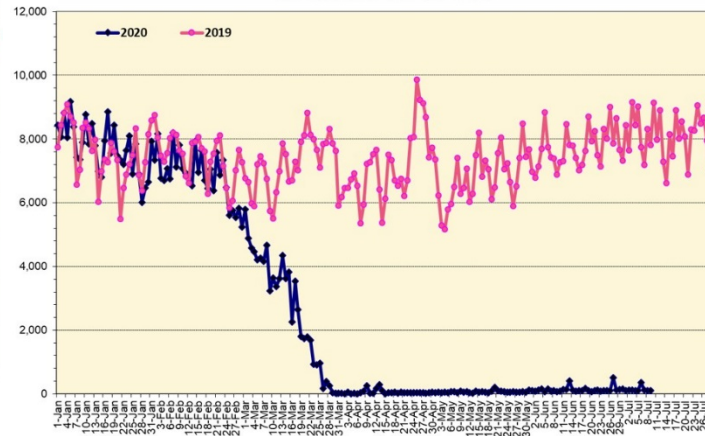
Total Passenger Count

International Passenger Count

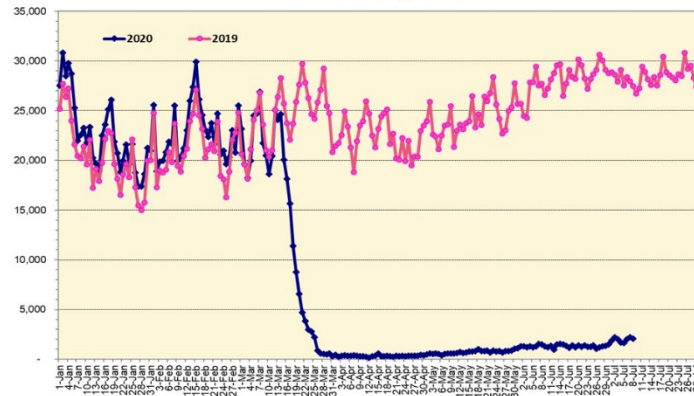
Domestic Passenger Count



Note: Excludes flights from Canada



Note: Excludes flights from Canada



Daily Passenger Count Table

07/08/2020	Domestic	International	Total
Oahu	1764	102	1866
Maui	193		193
Island of Hawaii	110		110
Kauai	0		0
State	2067	102	2169

7/9/20 Hawaii Passenger Arrivals by Air Update

Yesterday, 2387 people arrived in Hawaii. This table shows the number of people who arrived by air from out of state yesterday and does not include interisland travel. This data was collected from the Hawaii DOT new Mandatory Travel Declaration Form.

	Kona	Maui	Oahu	Lihue	Total
Crew	9	25	199		233
Transit		1	122		123
Military			322		322
Exempt			127		127
Relocate to Hawaii	16	18	137		171
Returning Resident	48	109	632		789
Visitor	33	65	524		622
Grand Total	106	218	2063	0	2387
Flights	2	4	20	0	26

Statewide	Total
Total Cases	1130 (36 new)
Released from Isolation†	840
Required Hospitalization	123
Deaths	19
BY COUNTY	Total
Hawaii County	
Total Cases	97
Released from Isolation†	89
Required Hospitalization	3
Deaths	0
Honolulu County	
Total Cases	842
Released from Isolation†	600
Required Hospitalization	93
Deaths	13
Kauai County	
Total Cases	43
Released from Isolation†	35
Required Hospitalization	1
Deaths	0
Maui County	
Total Cases	130
Released from Isolation†	116
Required Hospitalization	25
Deaths	6
HI Residents diagnosed outside of HI	18
County Pending	0

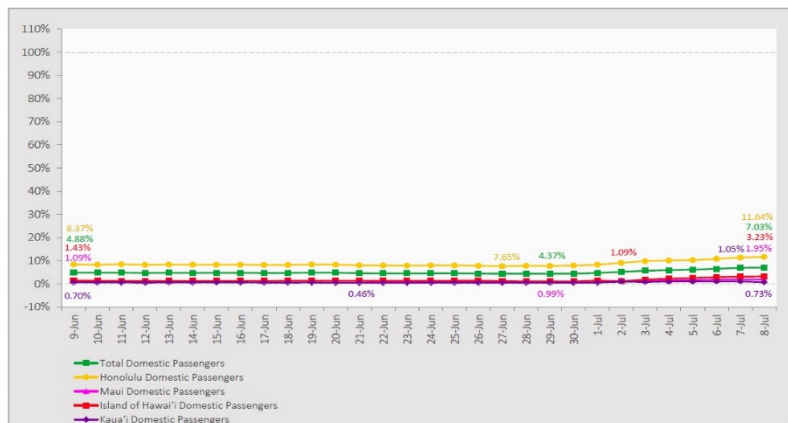
*includes presumptive and confirmed cases, data are preliminary and subject to change; note that CDC provides case counts according to states of residence.

†Isolation should be maintained until at least 3 days (72 hours) after resolution of fever and myalgia without the use of antipyretics OR at least 7 days have passed since symptom onset, whichever is longer.

7-Day Domestic by Island Moving Average Daily Passenger Volume

2020 Volume as Percentage of 2019 Volume

Through July 8, 2020



Source: HVCB analysis based on data from DBEDT

Note: Passenger volume figures include both visitors and residents.

Domestic by Island Month-to-Date and Year-to-Date Daily Passenger Volume

2020 Volume versus 2019 Volume

Through July 8, 2020

July 2020 (Month-to-Date through July 8)

	2020	2019	Volume Change	Percent Change
Honolulu	13,452	117,728	-104,276	-88.6%
Maui County	1,236	62,193	-60,957	-98.0%
Island of Hawai'i	854	27,605	-26,751	-96.9%
Kauai	191	20,777	-20,586	-99.1%
Total	15,733	228,303	-212,570	-93.1%

2020 (Year-to-Date through July 8)

	2020	2019	Volume Change	Percent Change
Honolulu	1,041,241	2,385,603	-1,344,362	-56.4%
Maui County	446,236	1,151,654	-705,418	-61.3%
Island of Hawai'i	219,821	533,793	-313,972	-58.8%
Kauai	149,794	400,405	-250,611	-62.6%
Total	1,857,092	4,471,455	-2,614,363	-58.5%

Source: HVCB analysis based on data from DBEDT

Note: Passenger volume figures include both visitors and residents. Total includes other international passengers. 2020 includes one additional day due to Leap Year (February 29th, 2020).

News Highlights

July 9, 2020

Hawaii News Now: [As US cases surge, council asks state to 'consider' delaying changes to travel restrictions](#)

Honolulu Star-Advertiser: [Visitors to Hawaii surpass 700 for fourth time in July](#)

Hawaii News Now: [COVID-19 surge on the mainland leads to shortage of testing supplies in Hawaii](#)

Honolulu Star-Advertiser: [Letters: Let mayors decide on opening of tourism; Spruce up landscaping near McCoy Pavilion; HPD shouldn't discount public's concerns](#)

Honolulu Star-Advertiser: [Gov. David Ige and the state's mayors will meet again to decide whether to lift the 14-day travel quarantine](#)

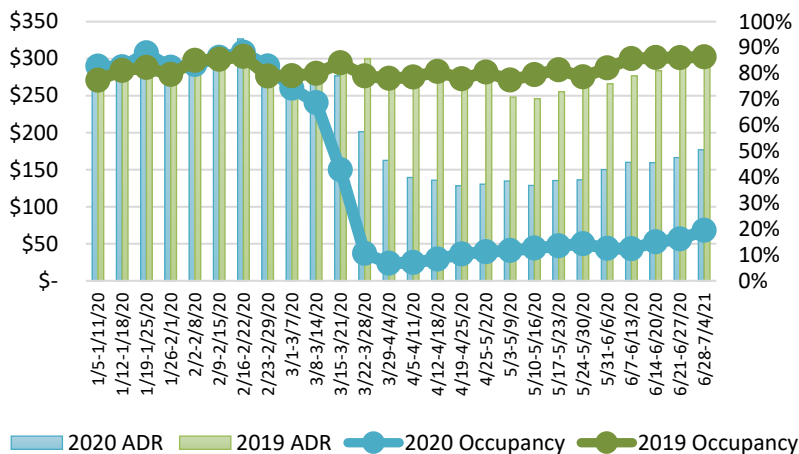
Honolulu Star-Advertiser: [United Airlines anticipates 386 Hawaii job furloughs](#)

KHON2: [Discussion continues between mayors, governor on whether to postpone lifting Hawaii's travel quarantine](#)

KHON2: [Delay in tourism reopening could spell economic disaster for Hawaii](#)

Hawaii Tribune-Herald: [Drive-through options dwindle as COVID testing approach changes](#)

State of Hawai'i Hotel Performance by Week - 2020 vs 2019



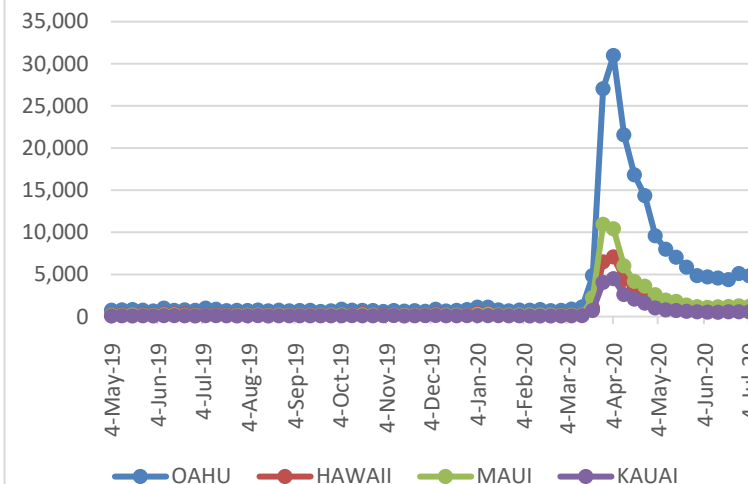
Source: STR, Inc. © Copyright 2020 Hawai'i Tourism Authority

Hawaii Hotel Performance Info:

For the week of June 28 – July 4, 2020

	Occupancy	ADR	RevPAR
State of Hawaii	19.4%	\$ 176.94	\$ 34.38
Oahu	19.4%	\$ 180.77	\$ 35.05
Maui County	11.7%	\$ 186.13	\$ 21.71
Kauai County	21.7%	\$ 165.56	\$ 35.85
Island of Hawaii	29.8%	\$ 167.83	\$ 49.99

2020 Initial Weekly Unemployment Claims by Island



Weekly Unemployment Initial Claims: July 4, 2020

State of Hawaii	7,675
C&C of Oahu	4,810
Hawaii County	988
Maui County	1,191
Kauai County	546
Agent (filed in Hawaii against another state)	140

Helpful Resources

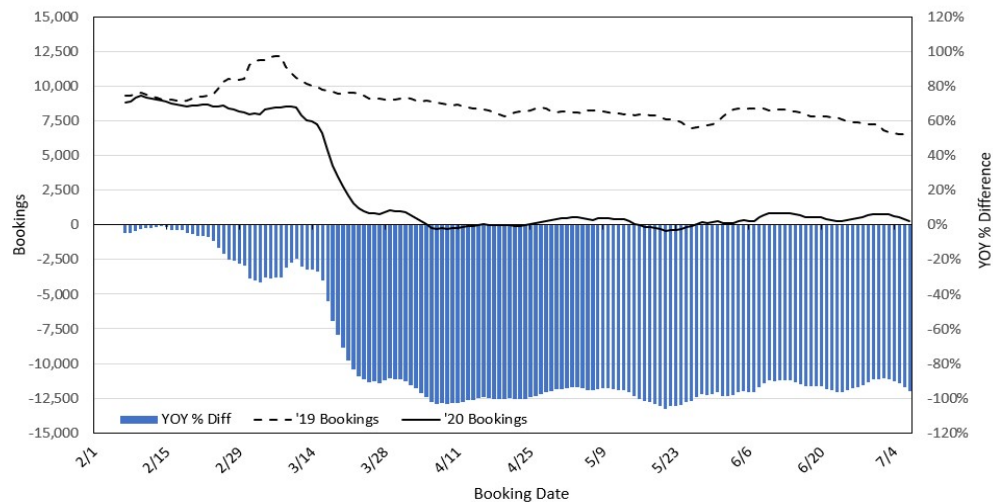
Department of Health
<https://hawaiicovid19.com/>

Department of Health
<https://health.hawaii.gov/docd/advisories/novel-coronavirus-2019>

Dept. of Business, Economic Development & Tourism
<https://dbedt.hawaii.gov/economic/covid19/>

Department of Transportation
<https://hidot.hawaii.gov/coronavirus/>

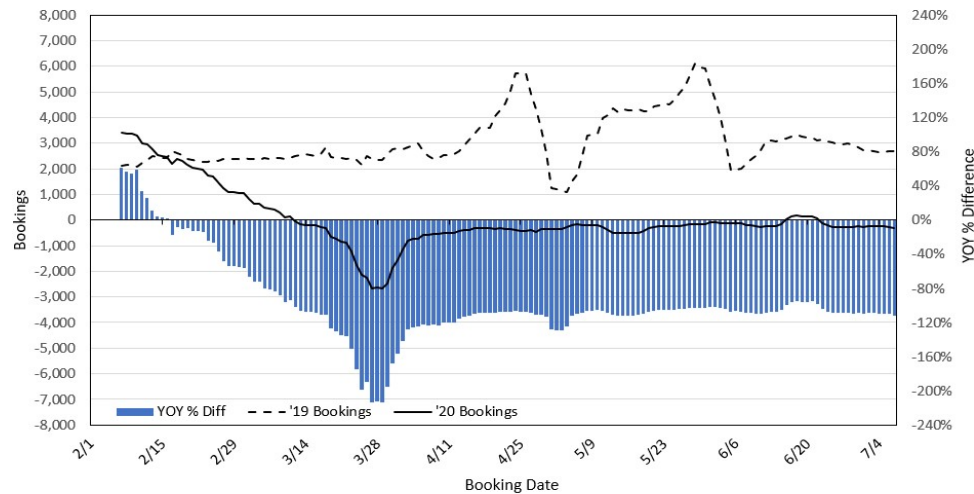
Travel Agency Bookings to Hawaii for Future Arrivals* Based on a 7-day Moving Average, 2020 vs 2019 U.S.



*Future Arrivals refers to all arrivals that are 'future' relative to the referenced booking date.
Source: Global Agency Pro

Update: Jul 7, 2020

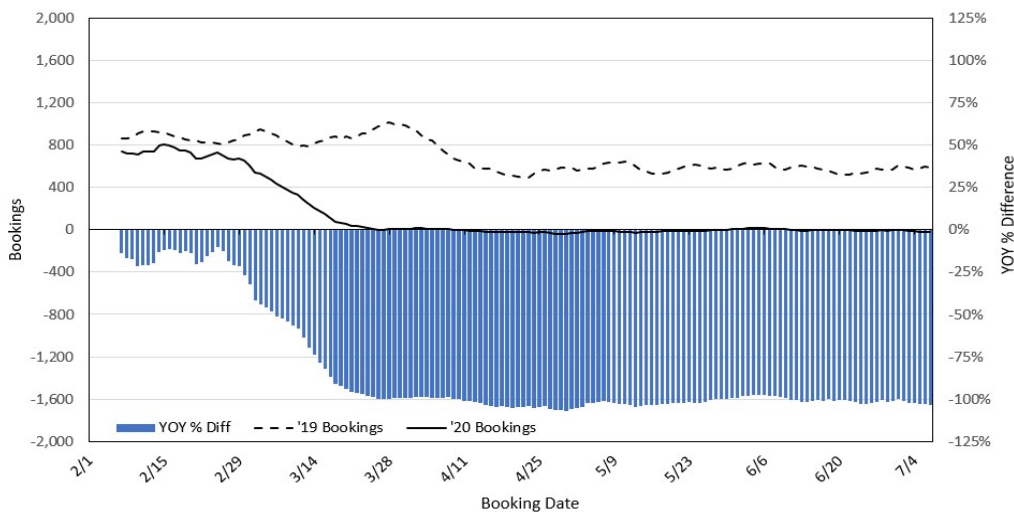
Travel Agency Bookings to Hawaii for Future Arrivals* Based on a 7-day Moving Average, 2020 vs 2019 Japan



*Future Arrivals refers to all arrivals that are 'future' relative to the referenced booking date.
Source: Global Agency Pro

Update: Jul 7, 2020

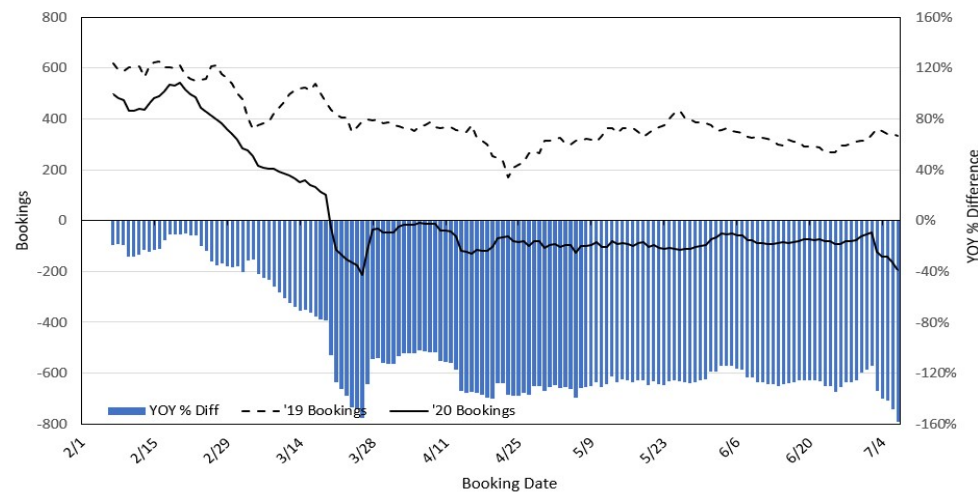
Travel Agency Bookings to Hawaii for Future Arrivals* Based on a 7-day Moving Average, 2020 vs 2019 Canada



*Future Arrivals refers to all arrivals that are 'future' relative to the referenced booking date.
Source: Global Agency Pro

Update: Jul 7, 2020

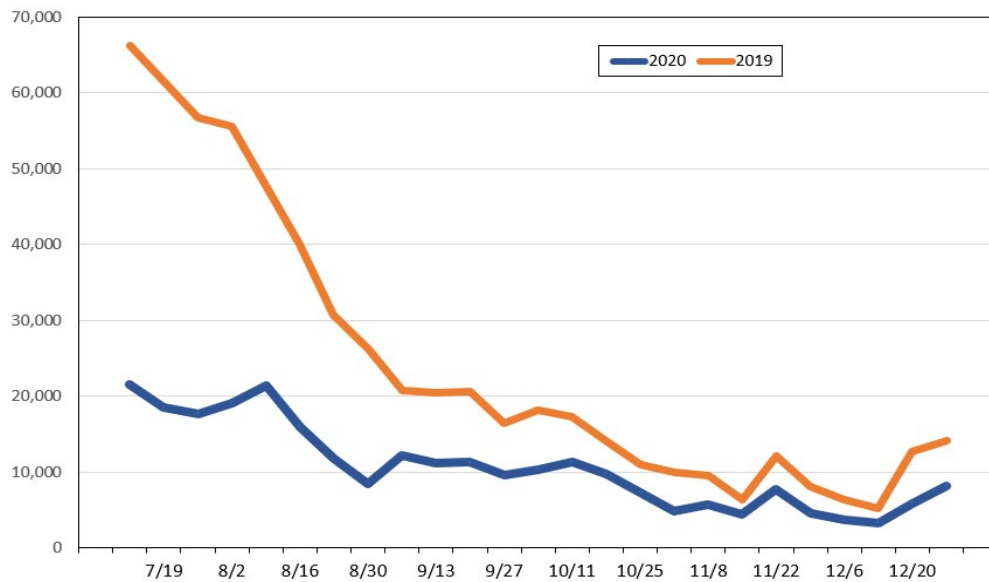
Travel Agency Bookings to Hawaii for Future Arrivals* Based on a 7-day Moving Average, 2020 vs 2019 Australia



*Future Arrivals refers to all arrivals that are 'future' relative to the referenced booking date.
Source: Global Agency Pro

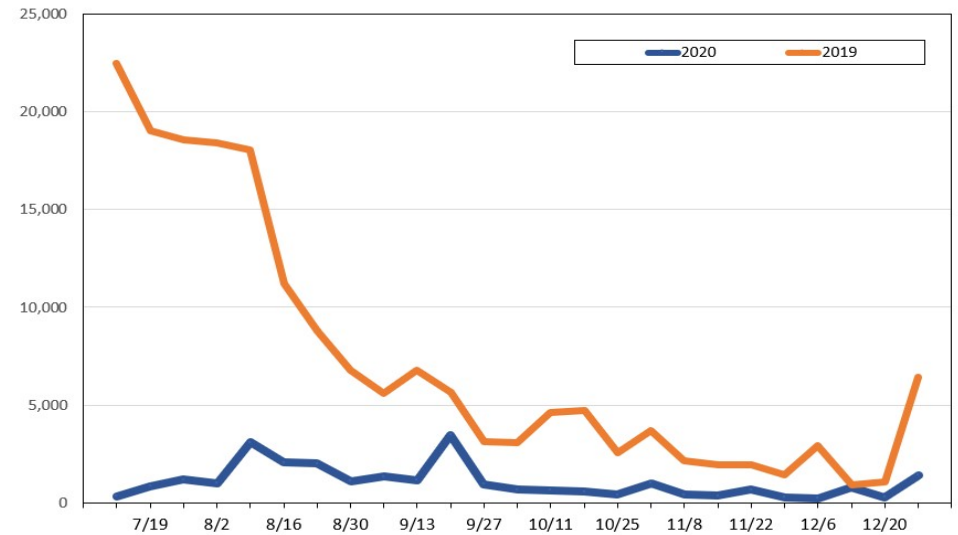
Update: Jul 7, 2020

Travel Agency Bookings for Future Travel to Hawai'i as of July 7, 2020
U.S.



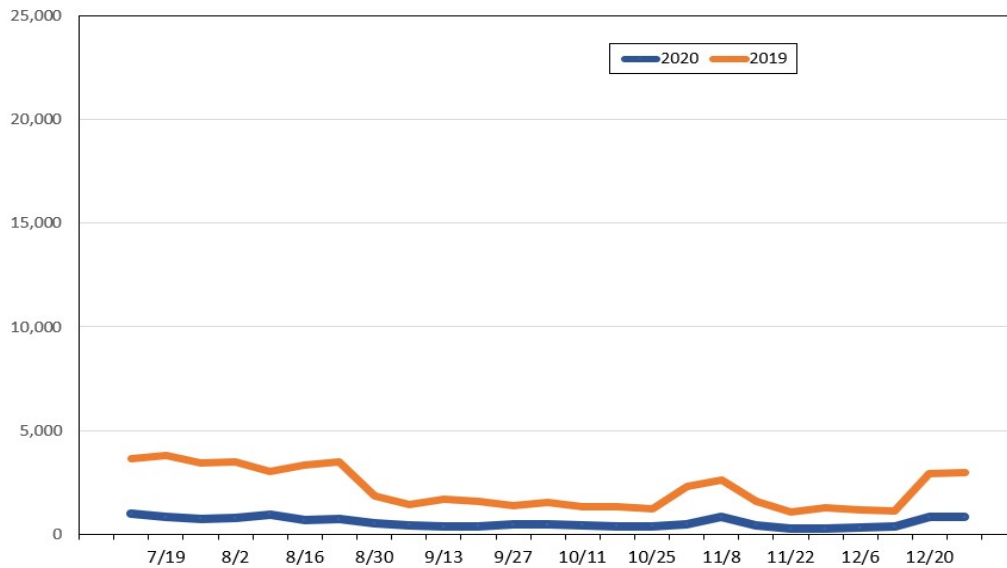
Source: Global Agency Pro, as of July 7, 2020

Travel Agency Bookings for Future Travel to Hawai'i as of July 7, 2020
Japan



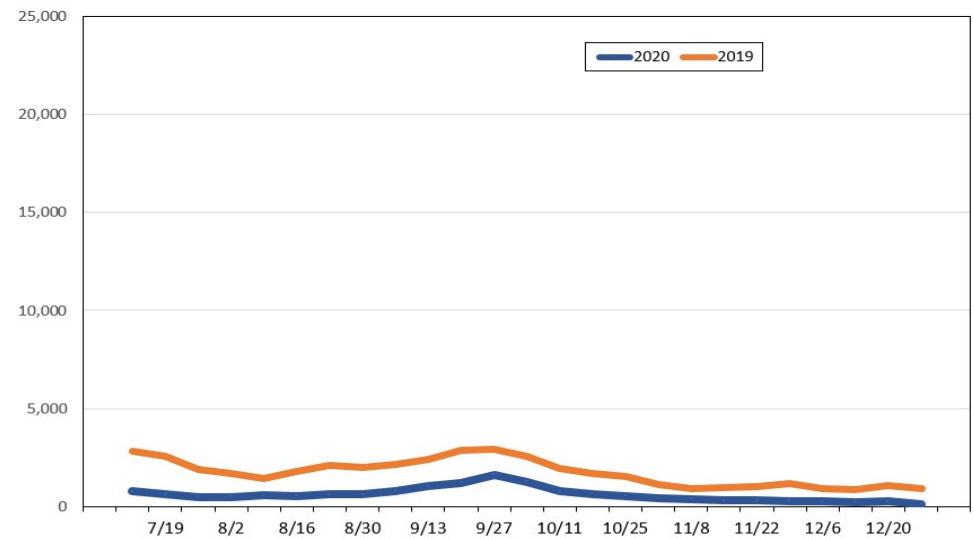
Source: Global Agency Pro, as of July 7, 2020

Travel Agency Bookings for Future Travel to Hawai'i as of July 7, 2020
Canada



Source: Global Agency Pro, as of July 7, 2020

Travel Agency Bookings for Future Travel to Hawai'i as of July 7, 2020
Australia



Source: Global Agency Pro, as of July 7, 2020