

# HTA COVID-19 UPDATE

(Issued: 7/21/20 @ 4:00pm)

## Novel Coronavirus in Hawaii

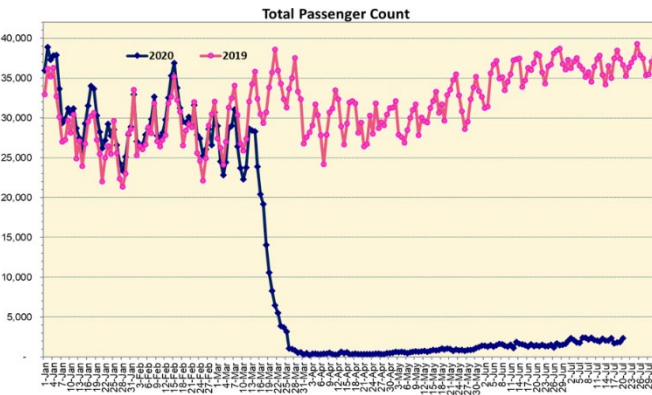
COVID-19 Positive\* Cases

Cumulative totals as of 12:00 noon on July 21, 2020

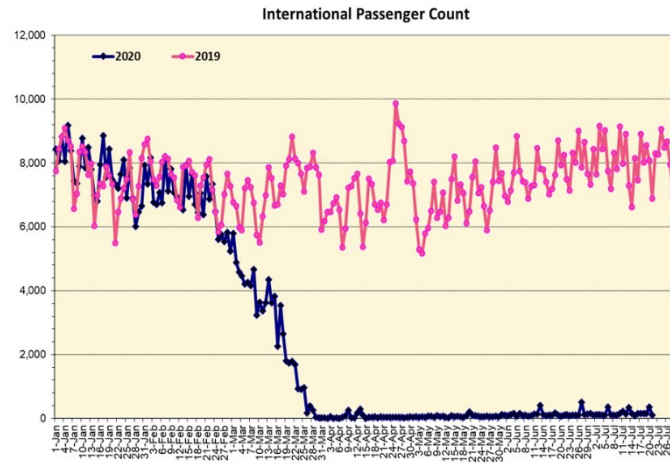
Statewide	Total
Total Cases	<b>1418</b> (25 new)
Released from Isolation†	1084
Required Hospitalization	151
Deaths	24
BY COUNTY	Total
Hawaii County	
Total Cases	114
Released from Isolation†	108
Required Hospitalization	4
Deaths	0
Honolulu County	
Total Cases	1100
Released from Isolation†	812
Required Hospitalization	119
Deaths	17
Kauai County	
Total Cases	43
Released from Isolation†	42
Required Hospitalization	1
Deaths	0
Maui County	
Total Cases	139
Released from Isolation†	122
Required Hospitalization	25
Deaths	6
HI Residents diagnosed outside of HI	22
County Pending	0

\*includes presumptive and confirmed cases, data are preliminary and subject to change; note that CDC provides case counts according to states of residence.

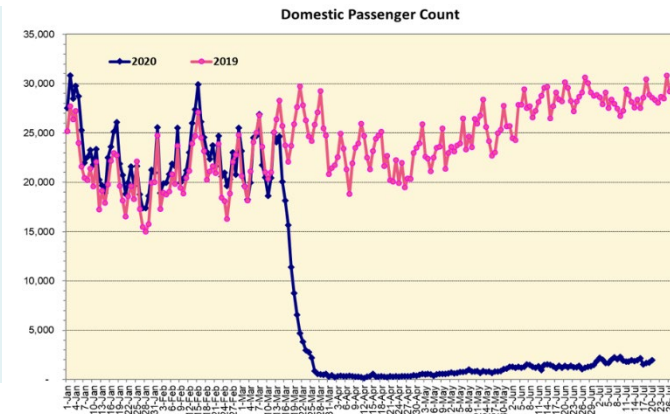
†Isolation should be maintained until at least 3 days (72 hours) after resolution of fever and myalgia without the use of antipyretics OR at least 7 days have passed since symptom onset, whichever is longer.



Note: Excludes flights from Canada



Note: Excludes flights from Canada



### Daily Passenger Count Table

07/20/2020	Domestic	International	Total
Oahu	1720	366	2086
Maui	156		156
Island of Hawaii	78		78
Kauai	0		0
State	1954	366	2320

### 7/21/20 Hawaii Passenger Arrivals by Air Update

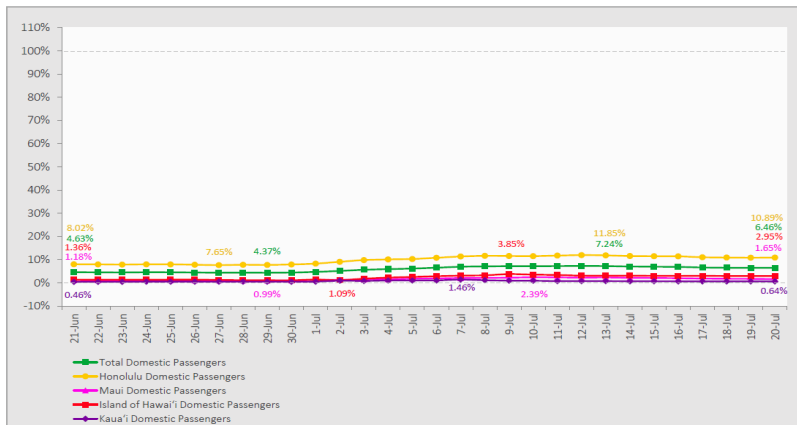
Yesterday, 2703 people arrived in Hawaii. This table shows the number of people who arrived by air from out of state yesterday and does not include interisland travel. This data was collected from the Hawaii DOT new Mandatory Travel Declaration Form.

	Kona	Maui	Oahu	Lihue	Total
Crew	6	18	264		288
Transit		1	146		147
Military			211		211
Exempt			158		158
Relocate to Hawaii	13	2	109		124
Returning Resident	32	106	1030		1168
Visitor	33	50	524		607
<b>Grand Total</b>	<b>84</b>	<b>177</b>	<b>2442</b>	<b>0</b>	<b>2703</b>
<b>Flights</b>	<b>1</b>	<b>3</b>	<b>22</b>	<b>0</b>	<b>26</b>

Market Impact Update: <https://www.dropbox.com/07/21/20 HTA COVID19 Update>

### 7-Day Domestic by Island Moving Average Daily Passenger Volume

2020 Volume as Percentage of 2019 Volume  
Through July 20, 2020



Source: HVCB analysis based on data from DBEDT  
Note: Passenger volume figures include both visitors and residents.

### Domestic by Island Month-to-Date and Year-to-Date Daily Passenger Volume

2020 Volume versus 2019 Volume  
Through July 20, 2020

	2020	2019	Volume Change	Percent Change
Honolulu	33,134	292,833	-259,699	-88.7%
Maui County	3,006	152,729	-149,723	-98.0%
Island of Hawai'i	2,056	68,409	-66,353	-97.0%
Kaua'i	449	52,743	-52,294	-99.1%
<b>Total</b>	<b>38,645</b>	<b>566,714</b>	<b>-528,069</b>	<b>-93.2%</b>

	2020	2019	Volume Change	Percent Change
Honolulu	1,060,923	2,560,708	-1,499,785	-58.6%
Maui County	448,006	1,242,190	-794,184	-63.9%
Island of Hawai'i	221,023	574,597	-353,574	-61.5%
Kaua'i	150,052	432,371	-282,319	-65.3%
<b>Total</b>	<b>1,880,004</b>	<b>4,809,866</b>	<b>-2,929,862</b>	<b>-60.9%</b>

Source: HVCB analysis based on data from DBEDT  
Note: Passenger volume figures include both visitors and residents. Total includes other international passengers. 2020 includes one additional day due to Leap Year (February 29th, 2020).

## News Highlights

July 21, 2020

**Hawaii News Now:** [Investigator: Visitors are skipping out on quarantine rules by going inter-island](#)

**Hawaii News Now:** [New Zealand group wants to bring a pro rugby team to Hawaii](#)

**Hawaii News Now:** [Governor: Reopening Hawaii's public schools is safe and necessary](#)

**Hawaii News Now:** ['Our teachers are scared': Union, parents cast doubt on schools' plan to reopen](#)

**Honolulu Star-Advertiser:** [Hawaii hotels battling for jobs](#)

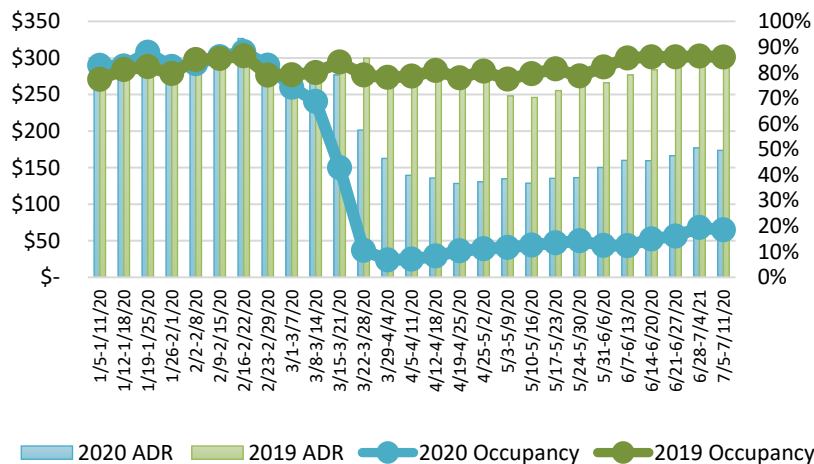
**KHON2:** [July 19: 2,209 passengers, 26 flights land in Hawaii](#)

**Honolulu Magazine:** [Did You Know Vaccines Are Being Developed in Hawaii? The Story Behind That and 5 Other Things Made, Grown and Designed in the Islands](#)

**USA Today:** [Coronavirus updates: Almost half of all states are spiking at a faster rate than in the spring, USA TODAY study finds](#)

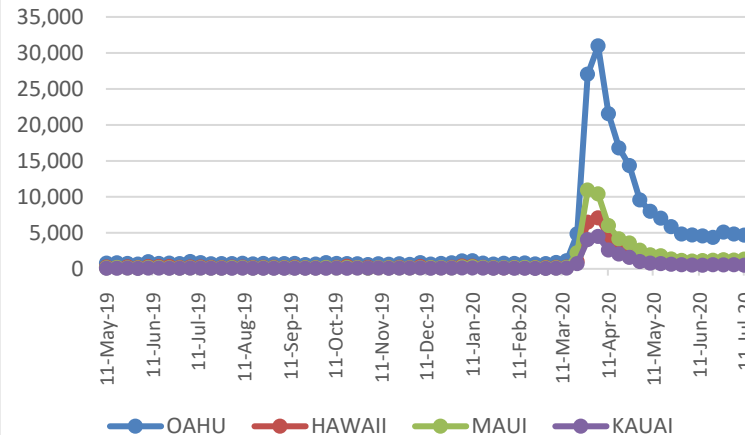
**FOX8:** [Nearly 200 people arrested in Hawaii for violating travel quarantine](#)

### State of Hawai'i Hotel Performance by Week - 2020 vs 2019



Source: STR, Inc. © Copyright 2020 Hawai'i Tourism Authority

### 2020 Initial Weekly Unemployment Claims by Island



### Weekly Unemployment Initial Claims: July 11, 2020

State of Hawaii	7,696
C&C of Oahu	4,667
Hawaii County	1,060
Maui County	1,323
Kauai County	475
Agent (filed in Hawaii against another state)	171

### Hawaii Hotel Performance Info:

For the week of July 5 – July 11, 2020

	Occupancy	ADR	RevPAR
<b>State of Hawaii</b>	18.5%	\$ 173.60	\$ 32.11
<b>Oahu</b>	19.1%	\$ 176.67	\$ 33.77
<b>Maui County</b>	11.5%	\$ 184.46	\$ 21.20
<b>Kauai County</b>	20.4%	\$ 166.22	\$ 33.83
<b>Island of Hawaii</b>	25.3%	\$ 161.83	\$ 40.91

#### Helpful Resources

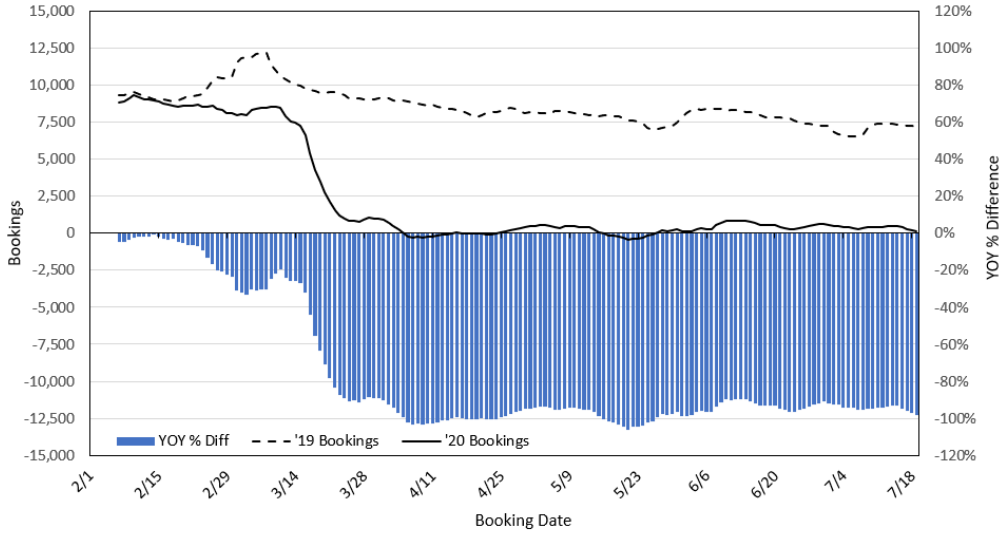
Department of Health  
<https://hawaiiocovid19.com/>

Department of Health  
<https://health.hawaii.gov/docd/advisories/novel-coronavirus-2019>

Dept. of Business, Economic Development & Tourism  
<https://dbedt.hawaii.gov/economic/covid19/>

Department of Transportation  
<https://hidot.hawaii.gov/coronavirus/>

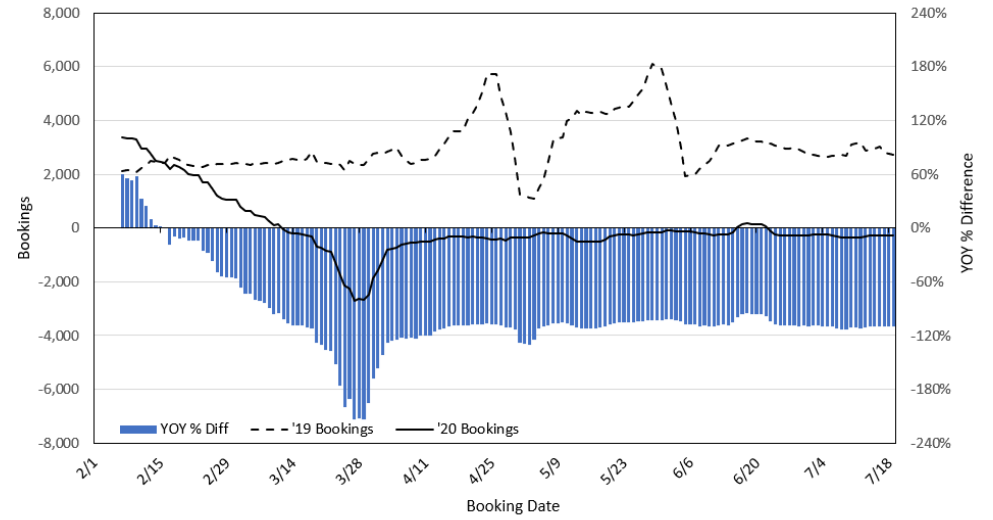
**Travel Agency Bookings to Hawaii for Future Arrivals\*  
Based on a 7-day Moving Average, 2020 vs 2019  
U.S.**



\*Future Arrivals refers to all arrivals that are 'future' relative to the referenced booking date.  
Source: Global Agency Pro

Update: Jul 19, 2020

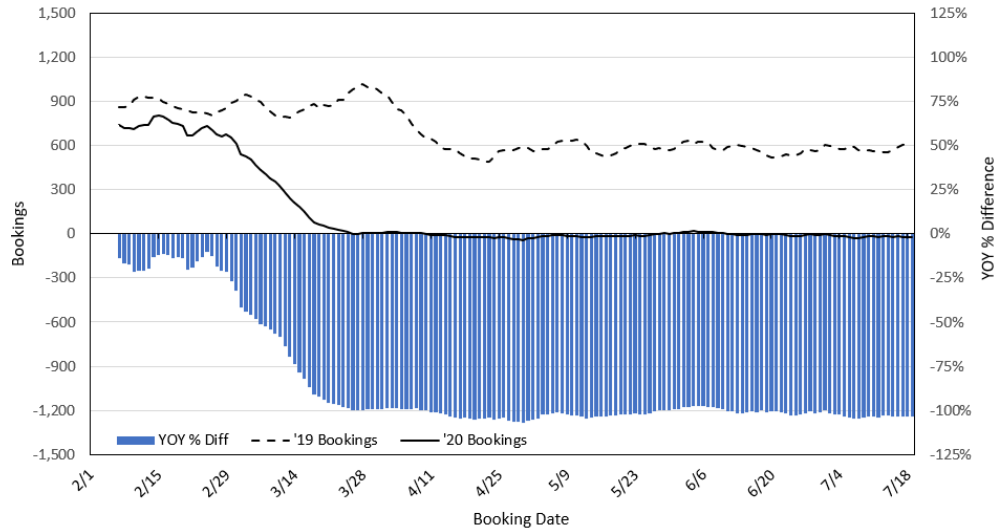
**Travel Agency Bookings to Hawaii for Future Arrivals\*  
Based on a 7-day Moving Average, 2020 vs 2019  
Japan**



\*Future Arrivals refers to all arrivals that are 'future' relative to the referenced booking date.  
Source: Global Agency Pro

Update: Jul 19, 2020

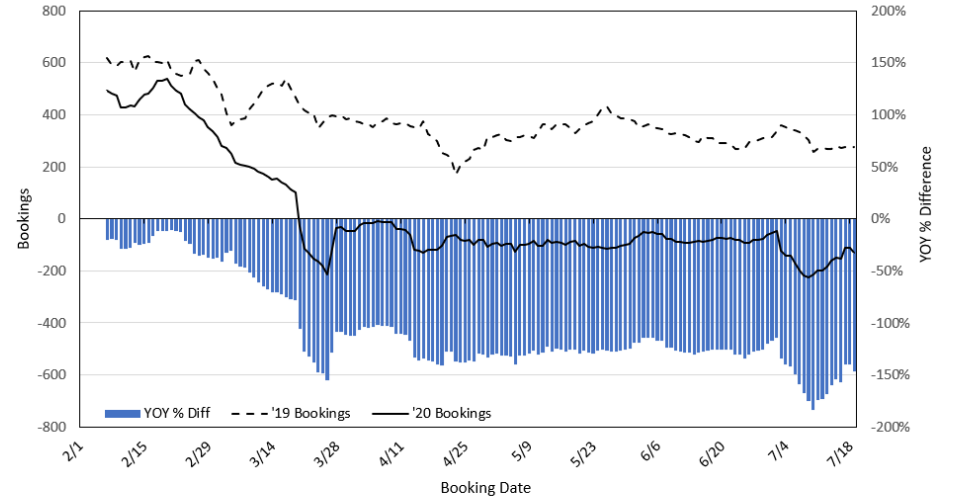
**Travel Agency Bookings to Hawaii for Future Arrivals\*  
Based on a 7-day Moving Average, 2020 vs 2019  
Canada**



\*Future Arrivals refers to all arrivals that are 'future' relative to the referenced booking date.  
Source: Global Agency Pro

Update: Jul 19, 2020

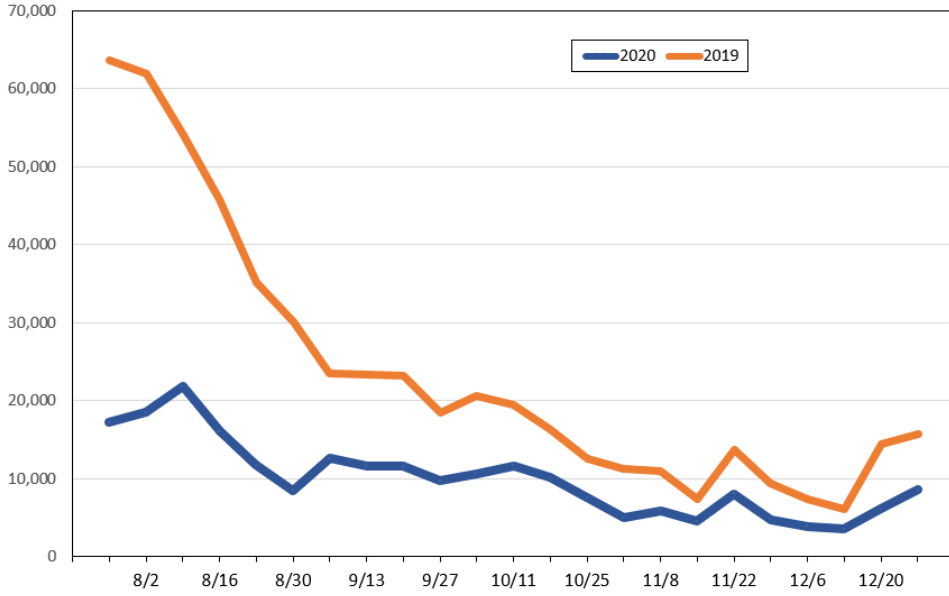
**Travel Agency Bookings to Hawaii for Future Arrivals\*  
Based on a 7-day Moving Average, 2020 vs 2019  
Australia**



\*Future Arrivals refers to all arrivals that are 'future' relative to the referenced booking date.  
Source: Global Agency Pro

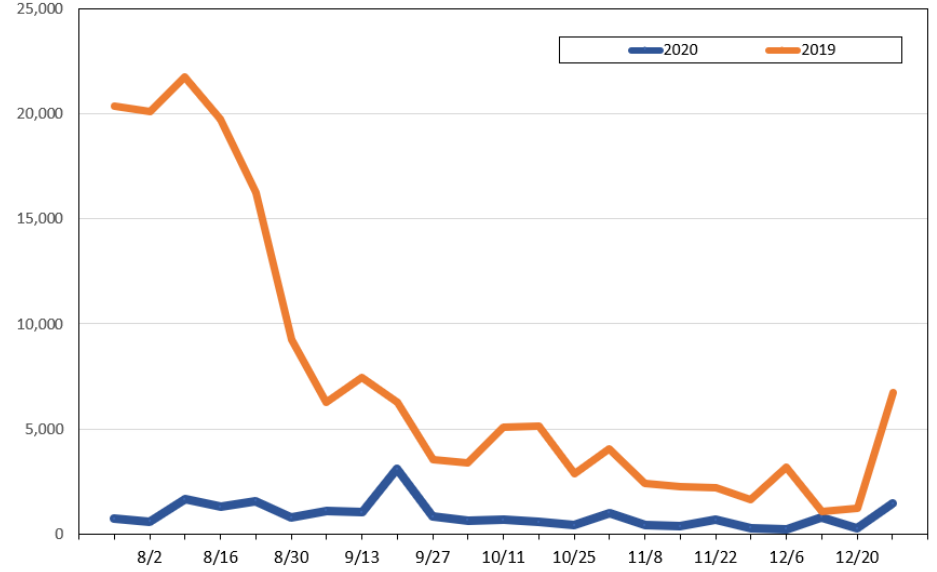
Update: Jul 19, 2020

**Travel Agency Weekly Bookings for Future Travel to Hawai'i as of July 19, 2020**  
U.S.



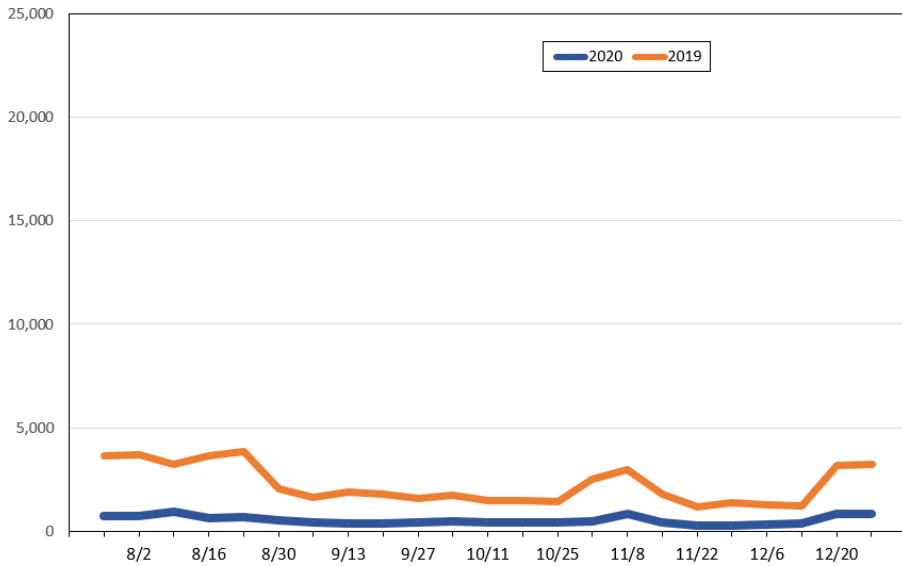
Source: Global Agency Pro, as of July 19, 2020

**Travel Agency Weekly Bookings for Future Travel to Hawai'i as of July 19, 2020**  
Japan



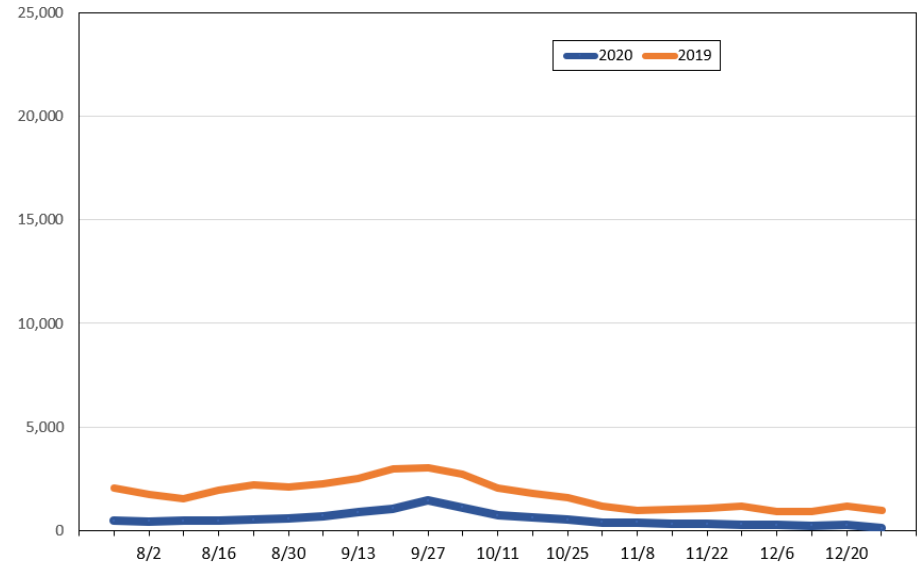
Source: Global Agency Pro, as of July 19, 2020

**Travel Agency Weekly Bookings for Future Travel to Hawai'i as of July 19, 2020**  
Canada



Source: Global Agency Pro, as of July 19, 2020

**Travel Agency Weekly Bookings for Future Travel to Hawai'i as of July 19, 2020**  
Australia



Source: Global Agency Pro, as of July 19, 2020