

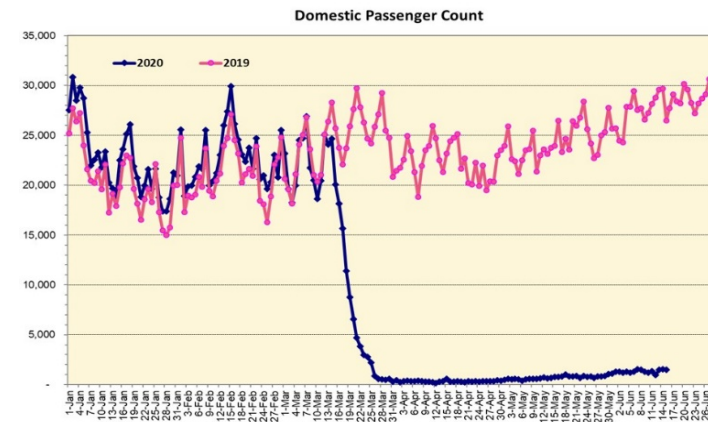
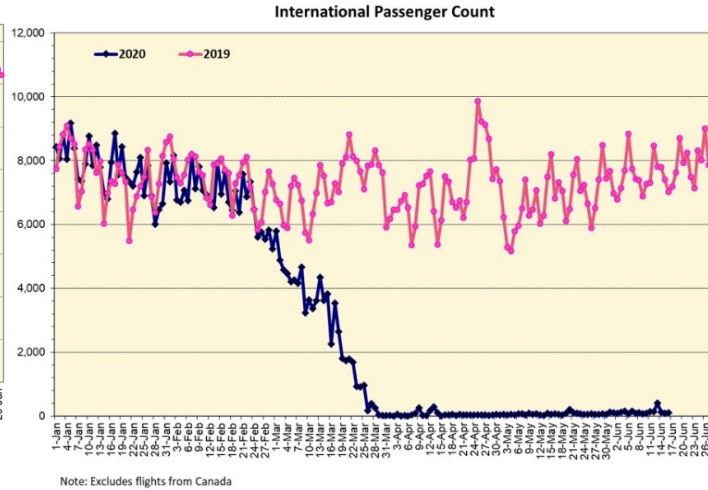
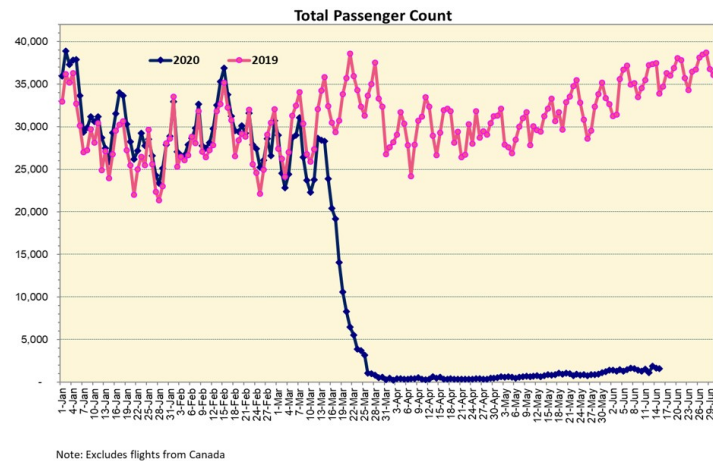
# HTA COVID-19 UPDATE

(Issued: 6/16/20 @ 3:30pm)

## Novel Coronavirus in Hawaii

COVID-19 Positive\* Cases

Cumulative totals as of 12:00 noon on June 16, 2020



### Daily Passenger Count Table

06/15/2020	Domestic	International	Total
Oahu	1351	92	1443
Maui	132		132
Island of Hawaii	0		0
Kauai	0		0
State	1483	92	1575

### 6/16/20 Hawaii Passenger Arrivals by Air Update

Yesterday, 1769 people arrived in Hawaii. This table shows the number of people who arrived by air from out of state yesterday and does not include interisland travel. This data was collected from the Hawaii DOT new Mandatory Travel Declaration Form.

	Kona	Maui	Oahu	Lihue	Total
Crew	8	12	183		203
Transit			140		140
Military			232		232
Exempt			143		143
Relocate to Hawaii		12	99		111
Returning Resident		80	463		543
Visitor	15	36	346		397
<b>Grand Total</b>	<b>23</b>	<b>140</b>	<b>1606</b>	<b>0</b>	<b>1769</b>
<b>Flights</b>	<b>3</b>	<b>2</b>	<b>15</b>	<b>0</b>	<b>20</b>

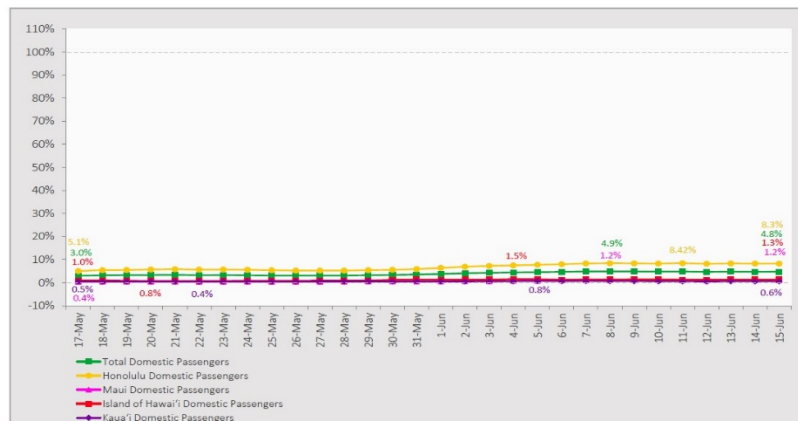
Statewide	Total
Total Cases	740 (4 new)
Released from Isolation†	637
Required Hospitalization	92
Deaths	17
BY COUNTY	Total
Hawaii County	
Total Cases	82
Released from Isolation†	81
Required Hospitalization	1
Deaths	0
Honolulu County	
Total Cases	505
Released from Isolation†	423
Required Hospitalization	67
Deaths	11
Kauai County	
Total Cases	21
Released from Isolation†	20
Required Hospitalization	1
Deaths	0
Maui County	
Total Cases	120
Released from Isolation†	113
Required Hospitalization	22
Deaths	6
HI Residents diagnosed outside of HI	12
County Pending	0

\*includes presumptive and confirmed cases, data are preliminary and subject to change; note that CDC provides case counts according to states of residence.

†Isolation should be maintained until at least 3 days (72 hours) after resolution of fever and myalgia without the use of antipyretics OR at least 7 days have passed since symptom onset, whichever is longer.

## 7-Day Domestic by Island Moving Average Daily Passenger Volume

2020 Volume as Percentage of 2019 Volume  
Through June 15, 2020



Source: HVCB analysis based on data from DBEDT  
Note: Passenger volume figures include both visitors and residents.

## Domestic by Island Month-to-Date and Year-to-Date Daily Passenger Volume

2020 Volume versus 2019 Volume  
Through June 15, 2020

June 2020 (Month-to-Date through June 15)

	2020	2019	Volume Change	Percent Change
Honolulu	17,822	211,712	-193,890	-91.6%
Maui County	1,304	111,239	-109,935	-98.8%
Island of Hawai'i	619	48,590	-47,971	-98.7%
Kaua'i	229	37,046	-36,817	-99.4%
Total	19,974	408,587	-388,613	-95.1%

2020 (Year-to-Date through June 15)

	2020	2019	Volume Change	Percent Change
Honolulu	1,010,411	2,048,633	-1,038,222	-50.7%
Maui County	443,706	970,937	-527,231	-54.3%
Island of Hawai'i	218,285	453,504	-235,219	-51.9%
Kaua'i	149,412	338,698	-189,286	-55.9%
Total	1,821,814	3,811,772	-1,989,958	-52.2%

Source: HVCB analysis based on data from DBEDT  
Note: Passenger volume figures include both visitors and residents. Total includes other international passengers. 2020 includes one additional day due to Leap Year (February 29th, 2020).

## News Highlights

June 16, 2020

KITV4: [Interisland travel quarantine officially lifted](#)

Honolulu Star-Advertiser: [Hawaii visitor arrivals top 400 again on Sunday](#)

Hawaii News Now: [Maui hotel workers demonstrate for worker safety, reopening](#)

The Garden Island: [Inter-island travel forms now available](#)

Honolulu Star-Advertiser: [Editorial: Go interisland to aid isles' recovery](#)

KHON2: [Waikiki Aquarium reopens](#)

The Garden Island: [Kauai Restart: Agriculture](#)

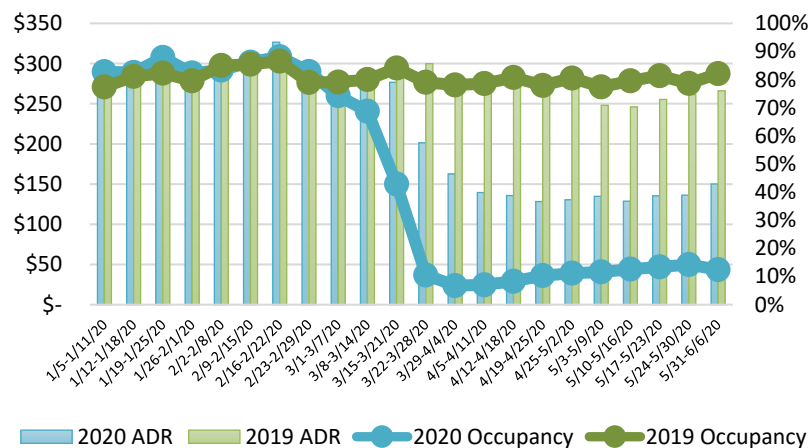
Associated Press: [Travelers accused of breaking quarantine set to leave Hawaii](#)

CNN: [China Eastern to launch new airline amid coronavirus tourism downturn](#)

Travel Pulse: [Travel Trends to Look for Post-COVID-19](#)

Los Angeles Times: [California's starting to reopen hotels. Hawaii just extended its shutdown](#)

## State of Hawai'i Hotel Performance by Week - 2020 vs 2019



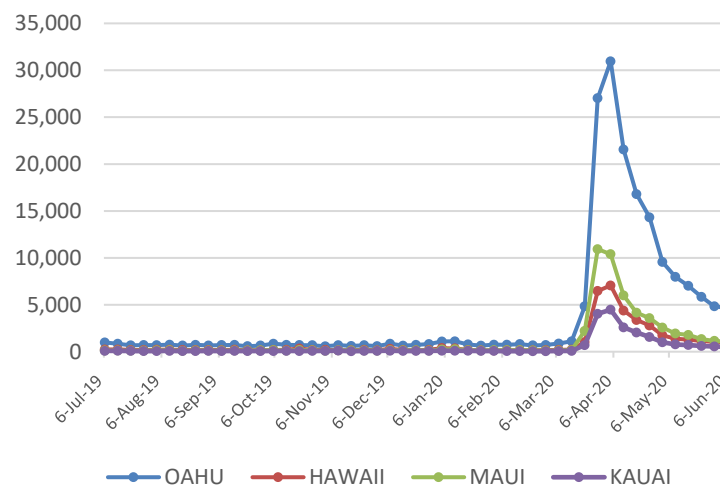
Source: STR, Inc. © Copyright 2020 Hawai'i Tourism Authority

## Hawaii Hotel Performance Info:

For the week of May 31 – June 6, 2020

	Occupancy	ADR	RevPAR
State of Hawaii	12.4%	\$ 150.13	\$ 18.68
Oahu	10.6%	\$ 161.36	\$ 17.14
Maui County	10.6%	\$ 157.50	\$ 16.66
Kauai County	19.1%	\$ 133.36	\$ 25.45
Island of Hawaii	16.5%	\$ 133.59	\$ 22.10

## 2020 Initial Weekly Unemployment Claims by Island



## Weekly Unemployment Initial Claims: June 6, 2020

State of Hawaii	7,370
C&C of Oahu	4,683
Hawaii County	930
Maui County	1,073
Kauai County	507
Agent (filed in Hawaii against another state)	177

## Helpful Resources

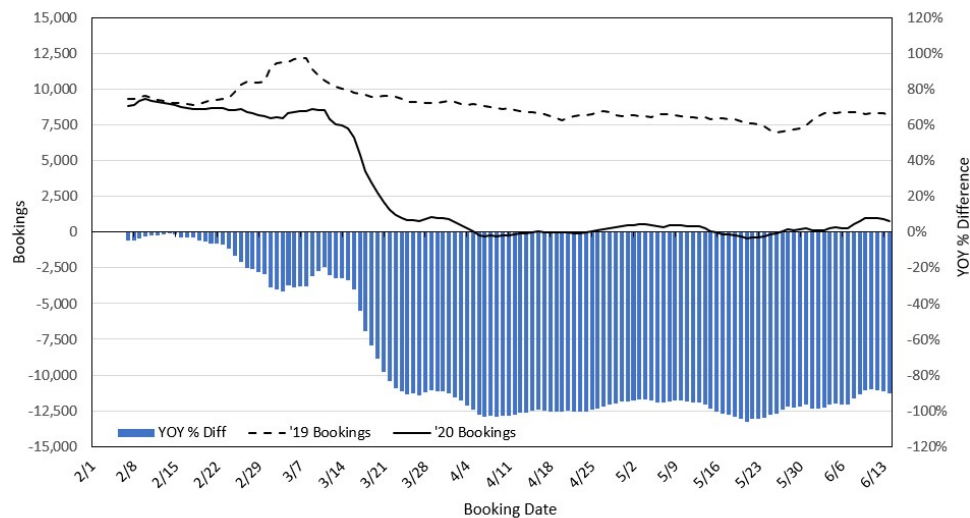
Department of Health  
<https://hawaiicovid19.com/>

Department of Health  
<https://health.hawaii.gov/docd/advisories/novel-coronavirus-2019>

Dept. of Business, Economic Development & Tourism  
<https://dbedt.hawaii.gov/economic/covid19/>

Department of Transportation  
<https://hidot.hawaii.gov/coronavirus/>

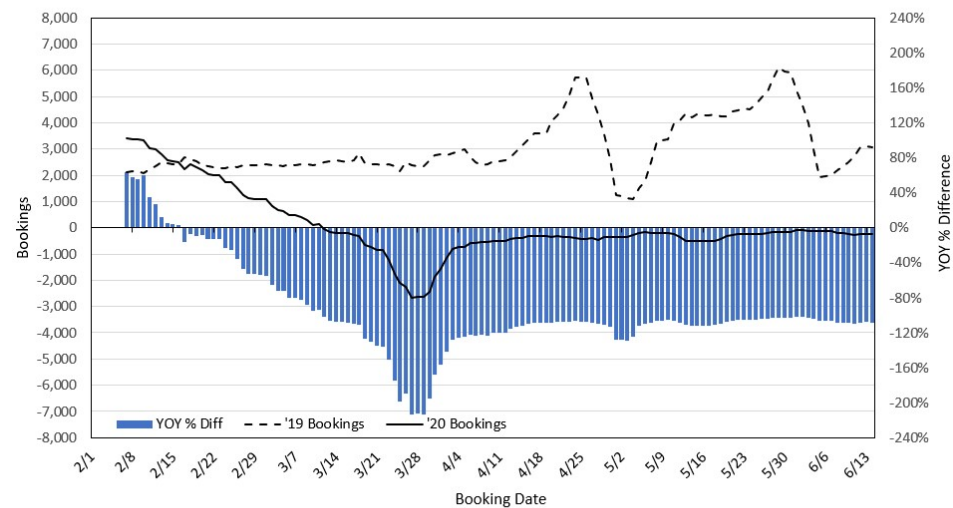
### Travel Agency Bookings to Hawaii for Future Arrivals\* Based on a 7-day Moving Average, 2020 vs 2019 U.S.



\*Future Arrivals refers to all arrivals that are 'future' relative to the referenced booking date.  
Source: Global Agency Pro

Update: Jun 14, 2020

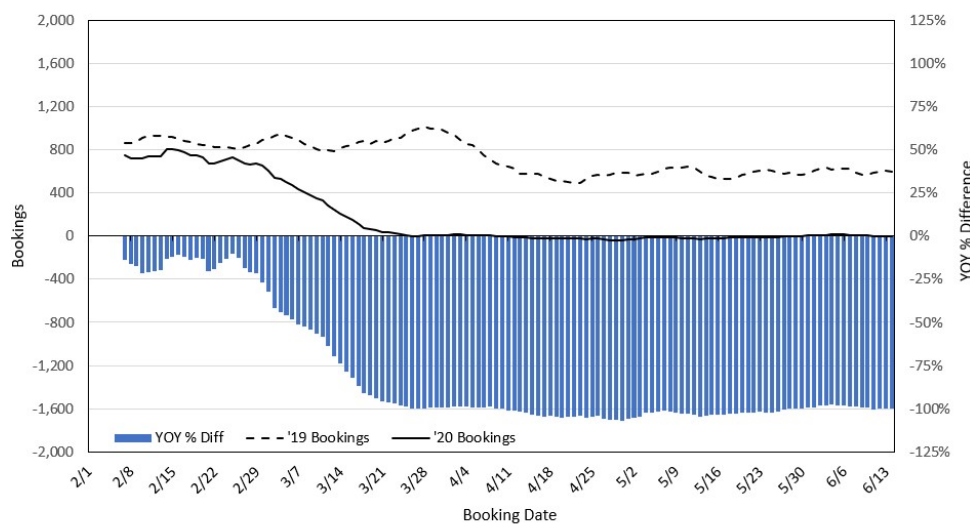
### Travel Agency Bookings to Hawaii for Future Arrivals\* Based on a 7-day Moving Average, 2020 vs 2019 Japan



\*Future Arrivals refers to all arrivals that are 'future' relative to the referenced booking date.  
Source: Global Agency Pro

Update: Jun 14, 2020

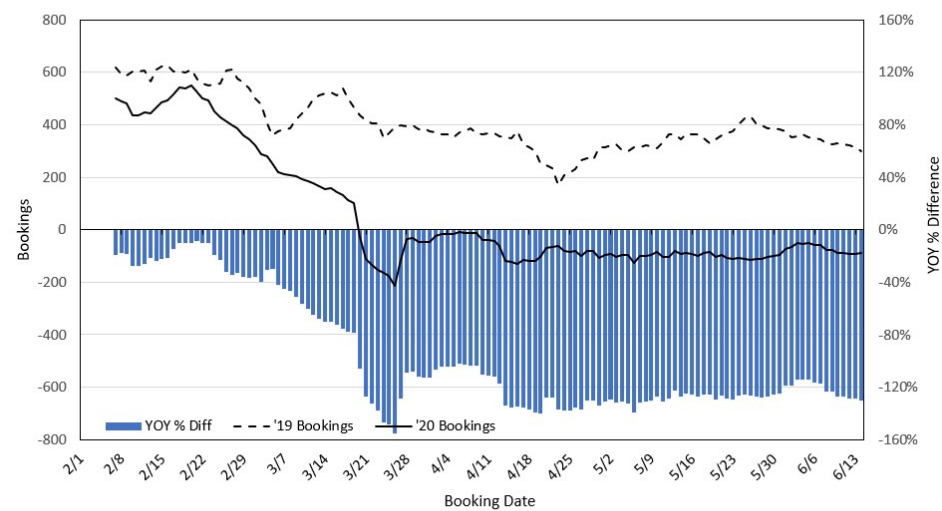
### Travel Agency Bookings to Hawaii for Future Arrivals\* Based on a 7-day Moving Average, 2020 vs 2019 Canada



\*Future Arrivals refers to all arrivals that are 'future' relative to the referenced booking date.  
Source: Global Agency Pro

Update: Jun 14, 2020

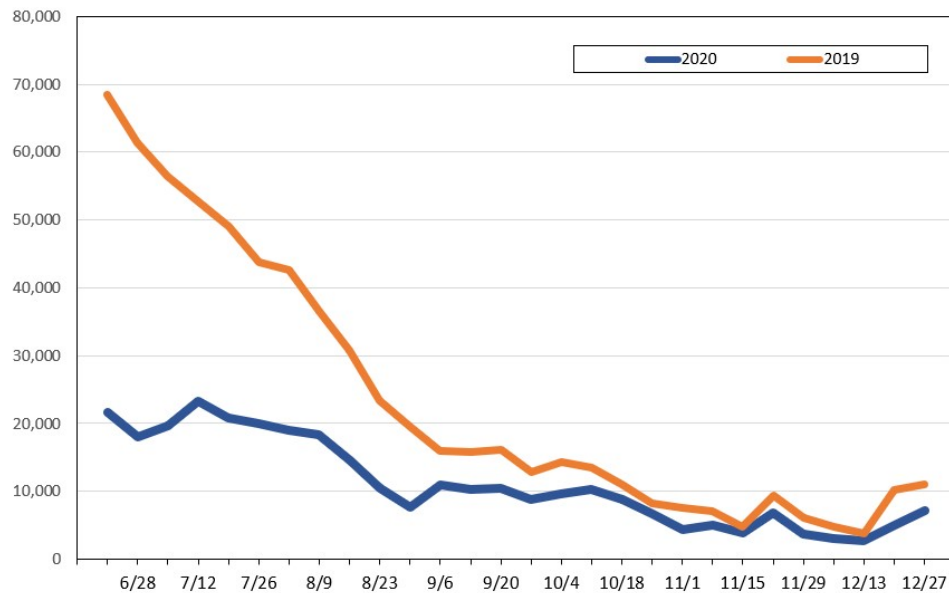
### Travel Agency Bookings to Hawaii for Future Arrivals\* Based on a 7-day Moving Average, 2020 vs 2019 Australia



\*Future Arrivals refers to all arrivals that are 'future' relative to the referenced booking date.  
Source: Global Agency Pro

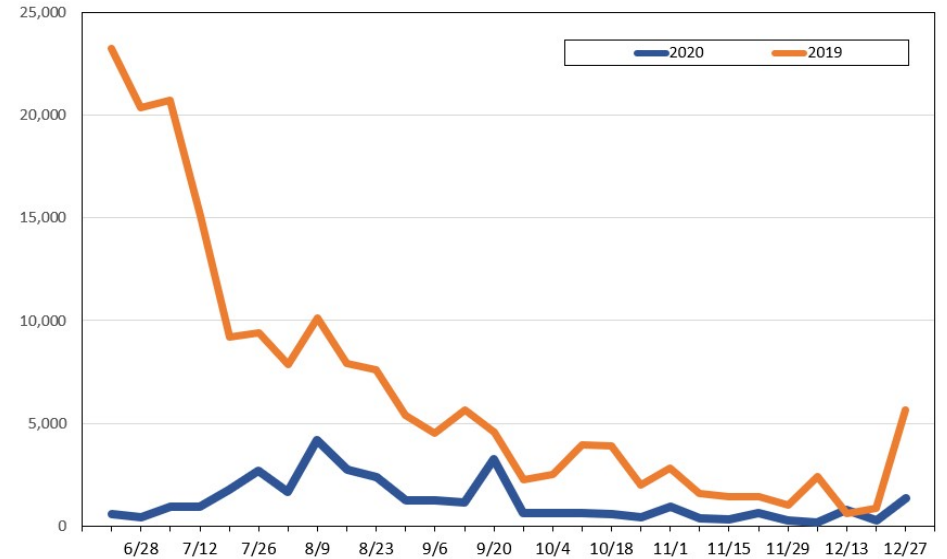
Update: Jun 14, 2020

**Travel Agency Bookings for Future Travel to Hawai'i as of June 14, 2020**  
**U.S.**



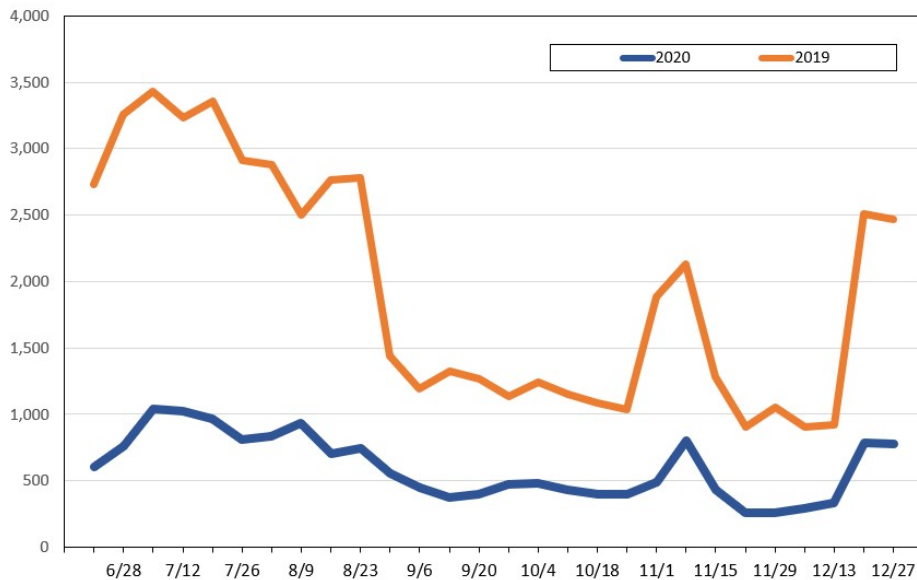
Source: Global Agency Pro, as of June 14, 2020

**Travel Agency Bookings for Future Travel to Hawai'i as of June 14, 2020**  
**Japan**



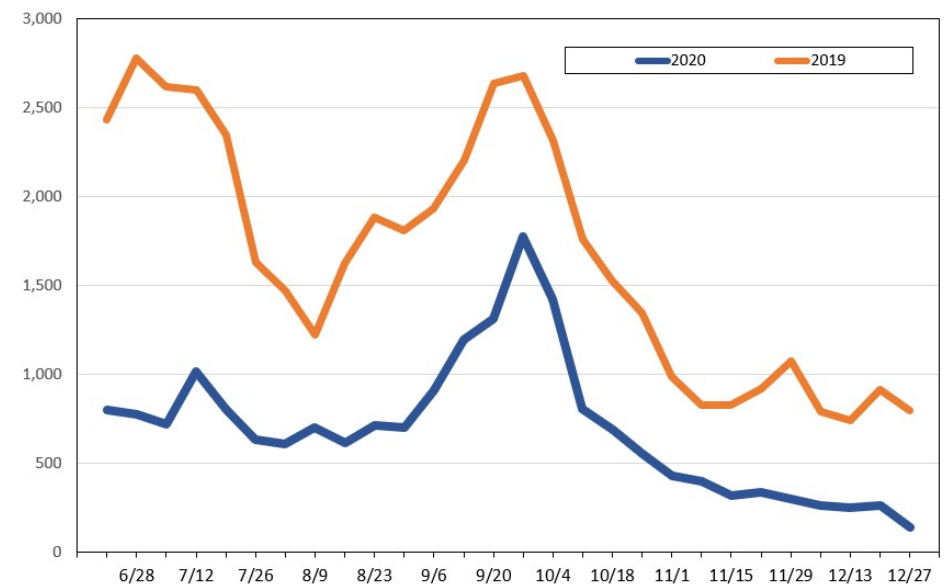
Source: Global Agency Pro, as of June 14, 2020

**Travel Agency Bookings for Future Travel to Hawai'i as of June 14, 2020**  
**Canada**



Source: Global Agency Pro, as of June 14, 2020

**Travel Agency Bookings for Future Travel to Hawai'i as of June 14, 2020**  
**Australia**



Source: Global Agency Pro, as of June 14, 2020