

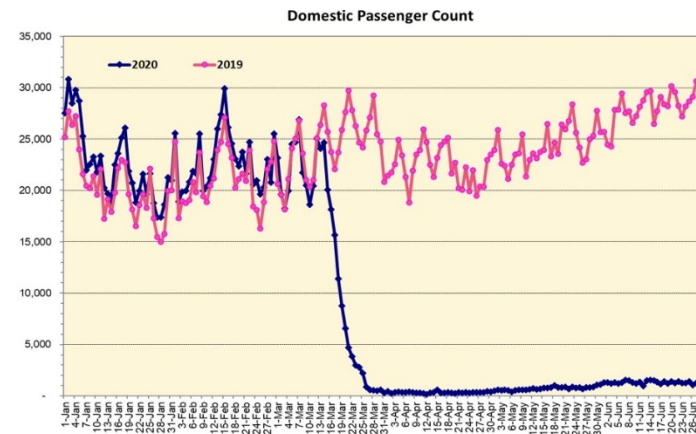
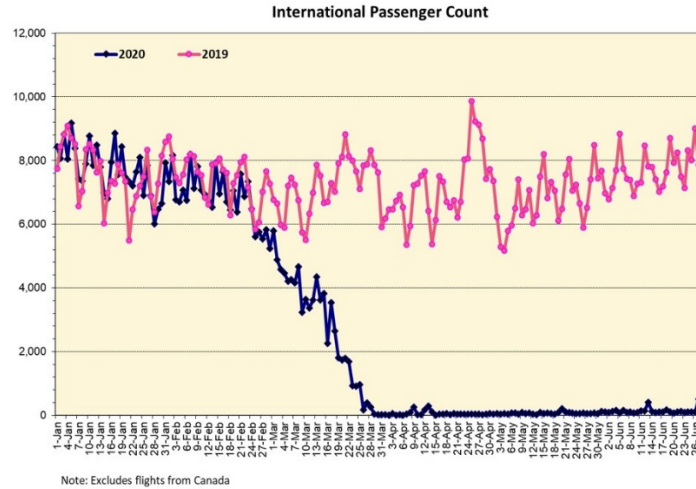
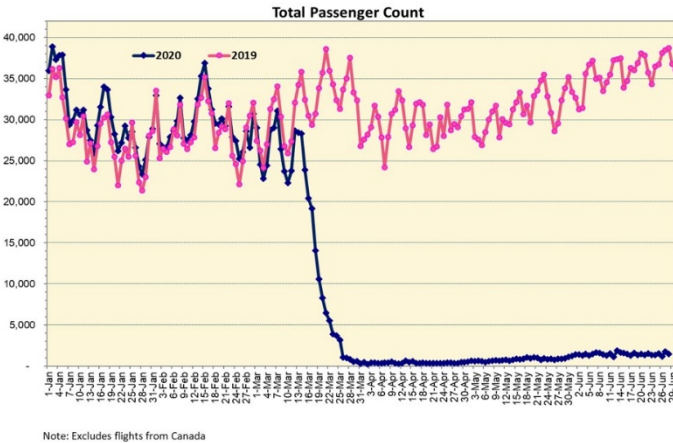
HTA COVID-19 UPDATE

(Issued: 6/29/20 @ 2:30pm)

Novel Coronavirus in Hawaii

COVID-19 Positive* Cases

Cumulative totals as of 12:00 noon on June 29, 2020



Daily Passenger Count Table

06/28/2020	Domestic	International	Total
Oahu	1209	115	1324
Maui	49		49
Island of Hawaii	59		59
Kauai	0		0
State	1317	115	1432

6/29/20 Hawaii Passenger Arrivals by Air Update

Yesterday, 1633 people arrived in Hawaii. This table shows the number of people who arrived by air from out of state yesterday and does not include interisland travel. This data was collected from the Hawaii DOT new Mandatory Travel Declaration Form.

	Kona	Maui	Oahu	Lihue	Total
Crew	6	12	167		185
Transit			117		117
Military			165		165
Exempt			113		113
Relocate to Hawaii	7	5	79		91
Returning Resident	24	26	451		501
Visitor	56	18	387		461
Grand Total	93	61	1479	0	1633
Flights	2	2	16	0	20

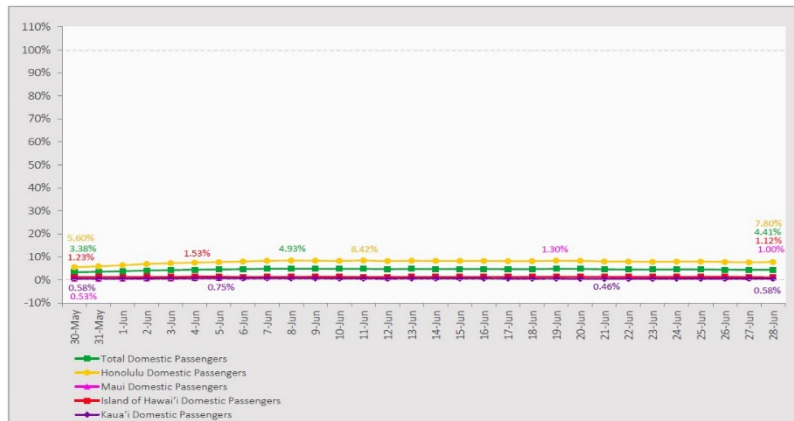
Statewide	Total
Total Cases	900 (2 new)
Released from Isolation†	722
Required Hospitalization	111
Deaths	18
BY COUNTY	Total
Hawaii County	
Total Cases	87
Released from Isolation†	84
Required Hospitalization	2
Deaths	0
Honolulu County	
Total Cases	638
Released from Isolation†	505
Required Hospitalization	82
Deaths	12
Kauai County	
Total Cases	37
Released from Isolation†	20
Required Hospitalization	1
Deaths	0
Maui County	
Total Cases	122
Released from Isolation†	113
Required Hospitalization	25
Deaths	6
HI Residents diagnosed outside of HI	16
County Pending	0

*includes presumptive and confirmed cases, data are preliminary and subject to change; note that CDC provides case counts according to states of residence.

†Isolation should be maintained until at least 3 days (72 hours) after resolution of fever and myalgia without the use of antipyretics OR at least 7 days have passed since symptom onset, whichever is longer.

7-Day Domestic by Island Moving Average Daily Passenger Volume

2020 Volume as Percentage of 2019 Volume
Through June 28, 2020



Source: HVCB analysis based on data from DBEDT
Note: Passenger volume figures include both visitors and residents.

Domestic by Island Month-to-Date and Year-to-Date Daily Passenger Volume

2020 Volume versus 2019 Volume
Through June 28, 2020

June 2020 (Month-to-Date through June 28)				
	2020	2019	Volume Change	Percent Change
Honolulu	32,626	400,636	-368,010	-91.9%
Maui County	2,368	212,830	-210,462	-98.9%
Island of Hawai'i	1,230	93,906	-92,676	-98.7%
Kaua'i	431	71,902	-71,471	-99.4%
Total	36,655	779,274	-742,619	-95.3%

2020 (Year-to-Date through June 28)				
	2020	2019	Volume Change	Percent Change
Honolulu	1,025,215	2,237,557	-1,212,342	-54.2%
Maui County	444,770	1,072,528	-627,758	-58.5%
Island of Hawai'i	218,896	498,820	-279,924	-56.1%
Kaua'i	149,614	373,554	-223,940	-59.9%
Total	1,838,495	4,182,459	-2,343,964	-56.0%

Source: HVCB analysis based on data from DBEDT
Note: Passenger volume figures include both visitors and residents. Total includes other international passengers. 2020 includes one additional day due to Leap Year (February 29th, 2020).

News Highlights

June 29, 2020

Honolulu Star-Advertiser: [Oahu's 1st city bus driver to test positive worked 1 week with COVID-19 symptoms](#)

Honolulu Star-Advertiser: [Editorial: Reopening Hawaii tourism is imperative for economy; so are tight protocols for health](#)

Honolulu Star-Advertiser: [Hundreds seeking testing in Waipahu, scene of recent clusters](#)

Honolulu Star-Advertiser: [Thursday's daily visitor count hit 504; Hawaii Tourism Authority kicks off search for new leader](#)

Hawaii Tribune-Herald: [Green to residents: Take longer trips](#)

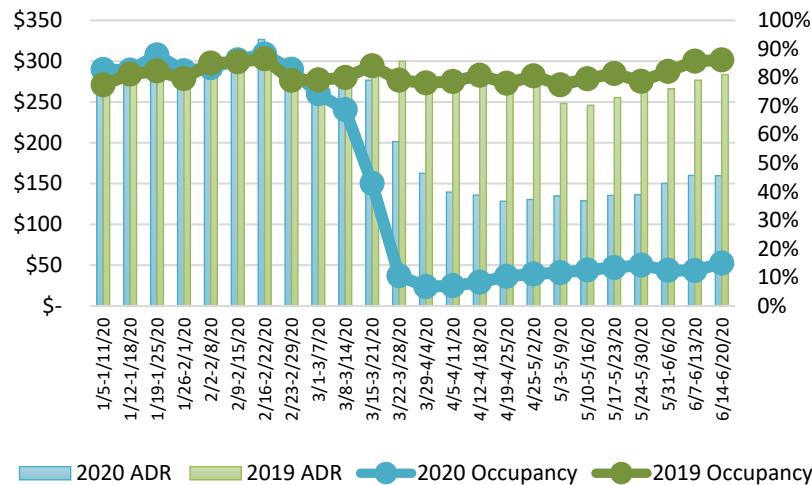
The Maui News: [Occupancy at 12.6% for hotels, 7.2% for vacation rentals in May](#)

The Garden Island: [Vacation rentals can, should safely reopen](#)

The Maui News: [Maui tourism leaders welcome prearrival testing date for visitors](#)

Travel Weekly: [With testing option, Hawaii sees 'safe and healthy' path to reopening tourism](#)

State of Hawai'i Hotel Performance by Week - 2020 vs 2019

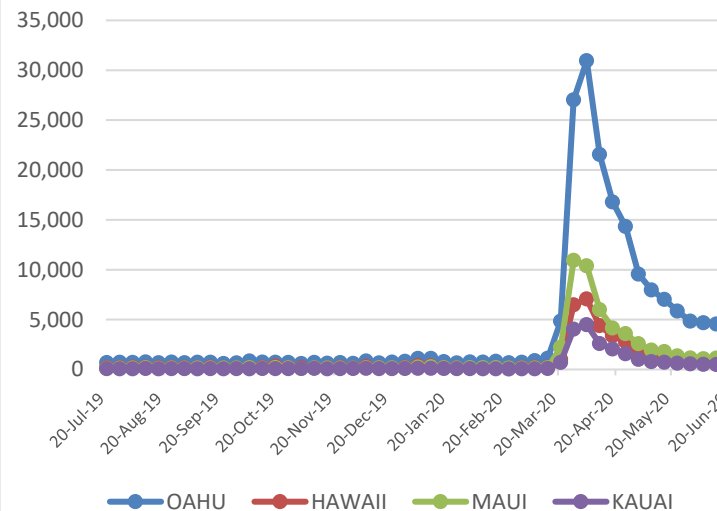


Source: STR, Inc. © Copyright 2020 Hawai'i Tourism Authority

Hawaii Hotel Performance Info: For the week of June 14 – June 20, 2020

	Occupancy	ADR	RevPAR
State of Hawaii	15.0%	\$ 159.53	\$ 23.89
Oahu	13.7%	\$ 169.07	\$ 23.22
Maui County	11.4%	\$ 139.97	\$ 15.96
Kauai County	20.9%	\$ 158.19	\$ 33.11
Island of Hawaii	20.5%	\$ 150.52	\$ 30.91

2020 Initial Weekly Unemployment Claims by Island



Weekly Unemployment Initial Claims: June 20, 2020

State of Hawaii	7,199
C&C of Oahu	4,352
Hawaii County	970
Maui County	1,173
Kauai County	545
Agent (filed in Hawaii against another state)	159

Helpful Resources

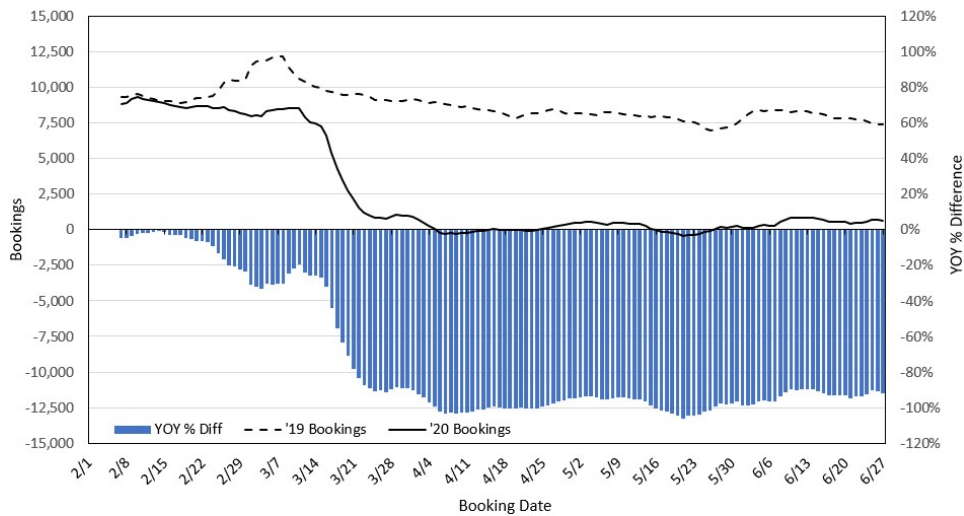
Department of Health
<https://hawaiicovid19.com/>

Department of Health
<https://health.hawaii.gov/docd/advisories/novel-coronavirus-2019>

Dept. of Business, Economic Development & Tourism
<https://dbedt.hawaii.gov/economic/covid19/>

Department of Transportation
<https://hidot.hawaii.gov/coronavirus/>

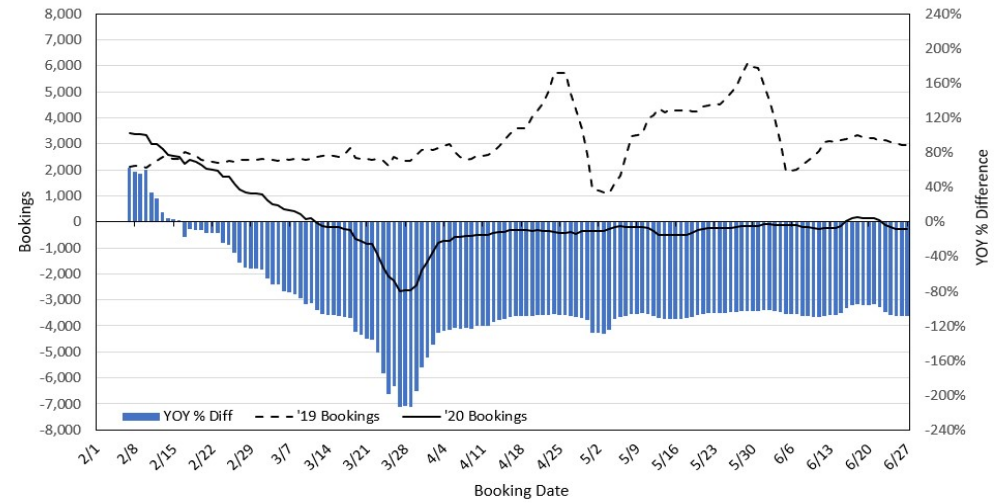
Travel Agency Bookings to Hawaii for Future Arrivals* Based on a 7-day Moving Average, 2020 vs 2019 U.S.



*Future Arrivals refers to all arrivals that are 'future' relative to the referenced booking date.
Source: Global Agency Pro

Update: Jun 27, 2020

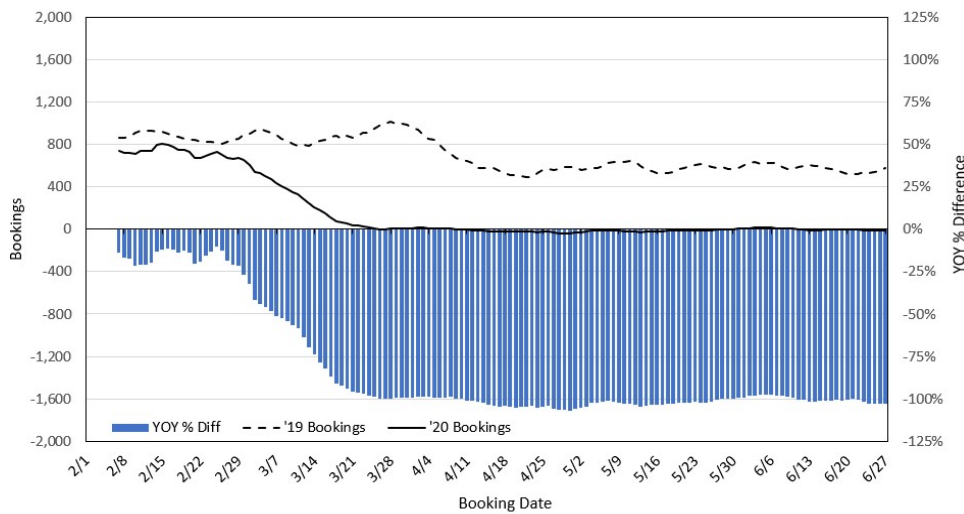
Travel Agency Bookings to Hawaii for Future Arrivals* Based on a 7-day Moving Average, 2020 vs 2019 Japan



*Future Arrivals refers to all arrivals that are 'future' relative to the referenced booking date.
Source: Global Agency Pro

Update: Jun 27, 2020

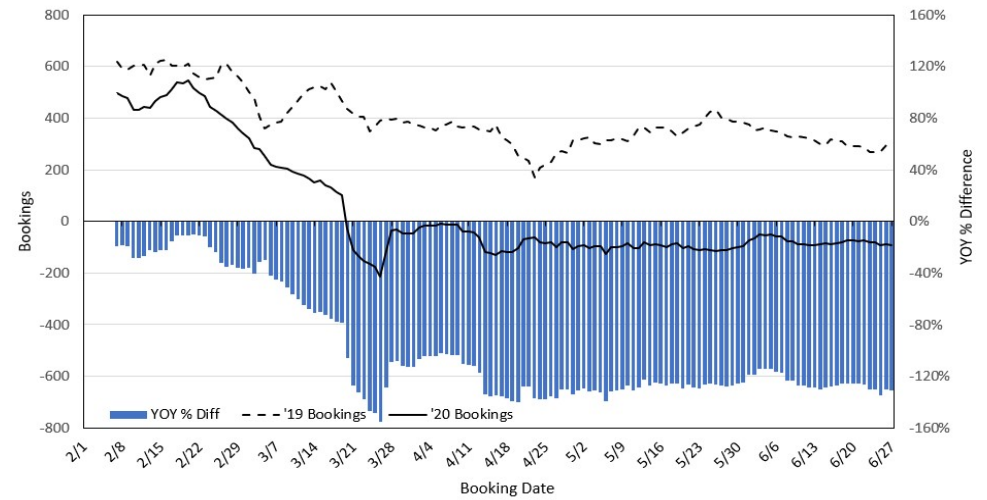
Travel Agency Bookings to Hawaii for Future Arrivals* Based on a 7-day Moving Average, 2020 vs 2019 Canada



*Future Arrivals refers to all arrivals that are 'future' relative to the referenced booking date.
Source: Global Agency Pro

Update: Jun 27, 2020

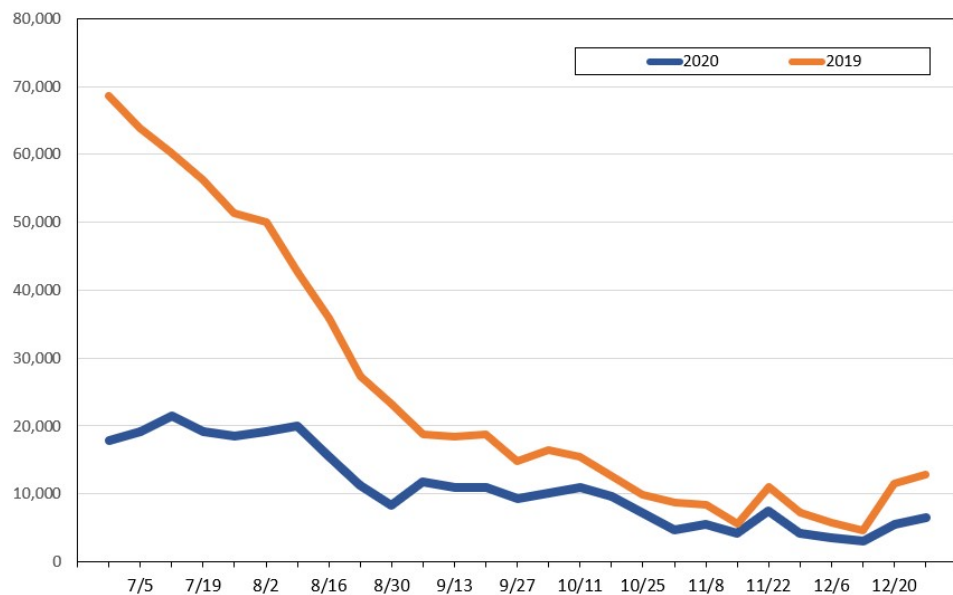
Travel Agency Bookings to Hawaii for Future Arrivals* Based on a 7-day Moving Average, 2020 vs 2019 Australia



*Future Arrivals refers to all arrivals that are 'future' relative to the referenced booking date.
Source: Global Agency Pro

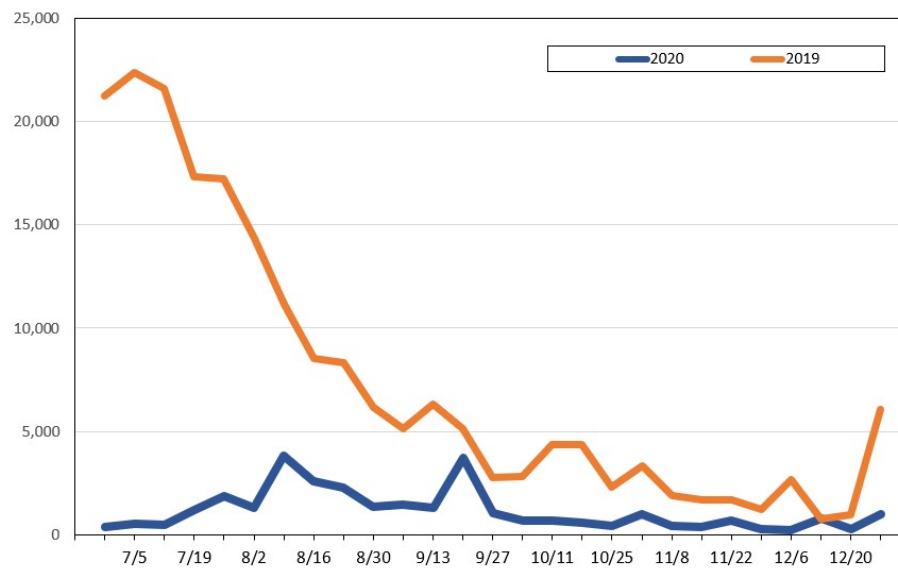
Update: Jun 27, 2020

Travel Agency Bookings for Future Travel to Hawai'i as of June 27, 2020
U.S.



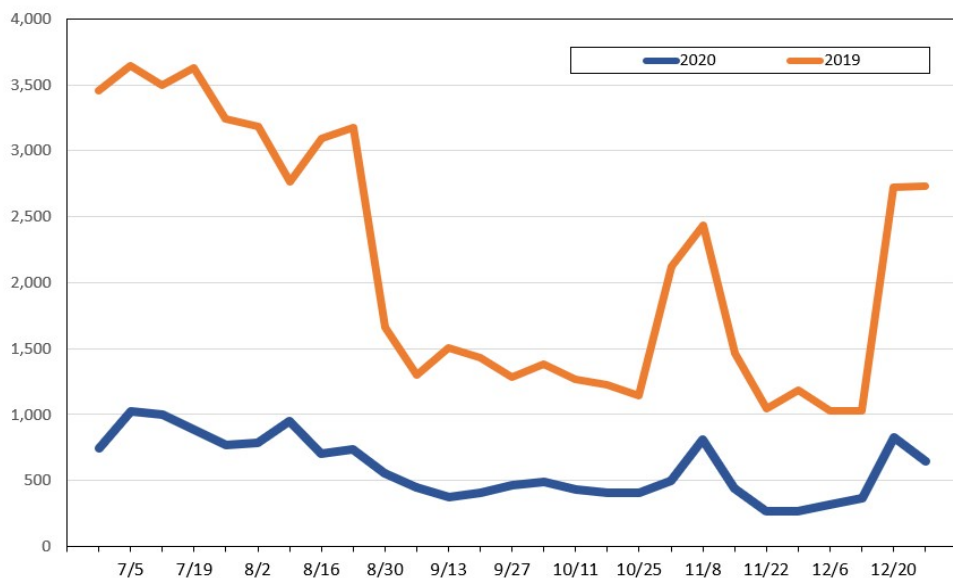
Source: Global Agency Pro, as of June 27, 2020

Travel Agency Bookings for Future Travel to Hawai'i as of June 27, 2020
Japan



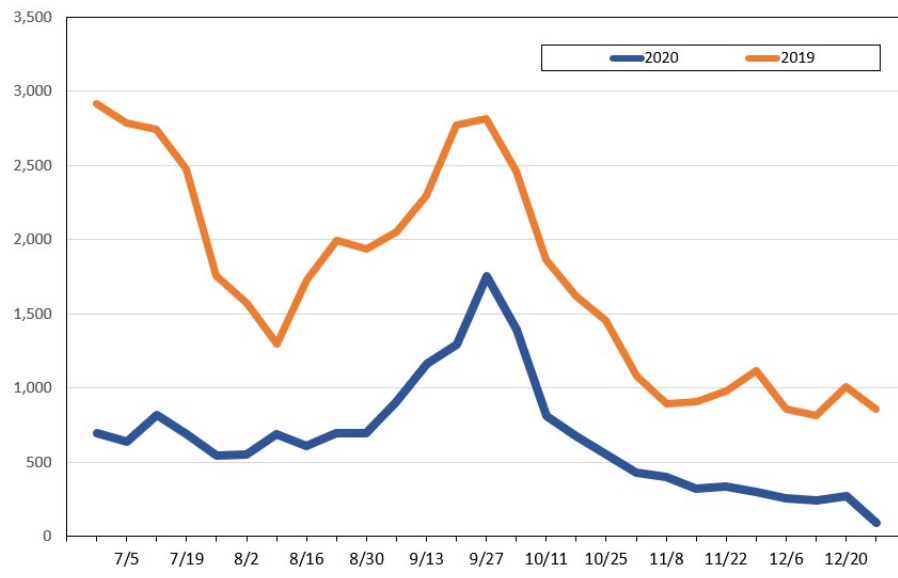
Source: Global Agency Pro, as of June 27, 2020

Travel Agency Bookings for Future Travel to Hawai'i as of June 27, 2020
Canada



Source: Global Agency Pro, as of June 27, 2020

Travel Agency Bookings for Future Travel to Hawai'i as of June 27, 2020
Australia



Source: Global Agency Pro, as of June 27, 2020