

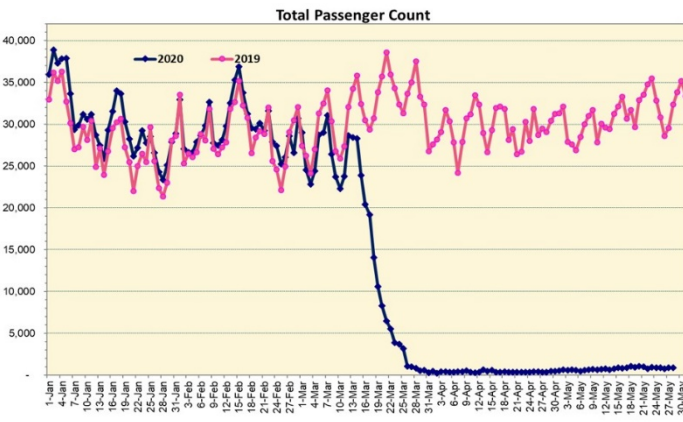
HTA COVID-19 UPDATE

(Issued: 5/29/20 @ 3:30pm)

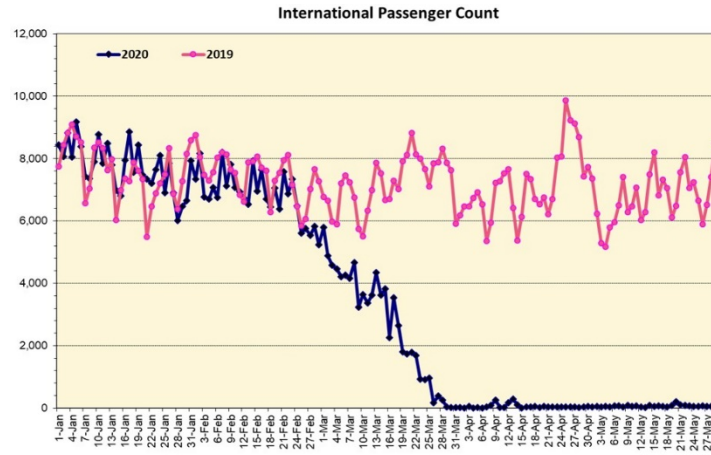
Novel Coronavirus in Hawaii

COVID-19 Positive* Cases

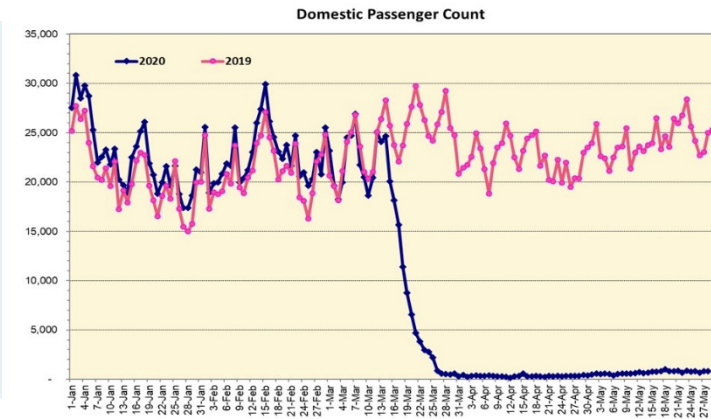
Cumulative totals as of 12:00 noon on May 29, 2020



Note: Excludes flights from Canada



Note: Excludes flights from Canada



Daily Passenger Count Table

05/28/2020	Domestic	International	Total
Oahu	801	57	858
Maui	0		0
Island of Hawaii	40		40
Kauai	0		0
State	841	57	898

05/29/20 Hawaii Passenger Arrivals by Air Update

Yesterday, 1031 people arrived in Hawaii. This table shows the number of people who arrived by air from out of state yesterday and does not include interisland travel. This data was collected from the Hawaii DOT new Mandatory Travel Declaration Form.

	Kona	Maui	Oahu	Lihue	Total
Crew	4		136		140
Exempt			54		54
Military			114		114
Relocate to Hawaii			39		39
Returning Resident	2		66		68
Transit	18		298		316
Visitor	20		280		300
Grand Total	44	0	987	0	1031
Flights	2	0	13	0	15

Statewide	Total
Total Cases	649 (3 new)
Released from Isolation†	605
Required Hospitalization	83
Deaths	17
BY COUNTY	Total
Hawaii County	
Total Cases	82
Released from Isolation†	82
Required Hospitalization	1
Deaths	0
Honolulu County	
Total Cases	419
Released from Isolation†	397
Required Hospitalization	58
Deaths	11
Kauai County	
Total Cases	20
Released from Isolation†	19
Required Hospitalization	1
Deaths	0
Maui County	
Total Cases	118
Released from Isolation†	107
Required Hospitalization	22
Deaths	6
HI Residents diagnosed outside of HI	10
County Pending	0

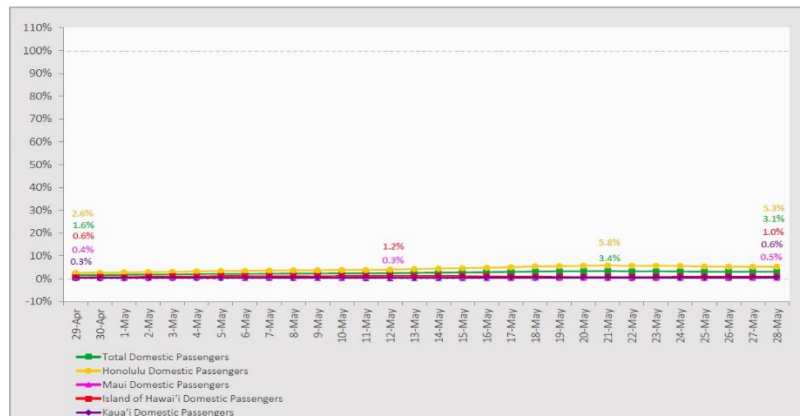
*includes presumptive and confirmed cases, data are preliminary and subject to change; note that CDC provides case counts according to states of residence.

†Isolation should be maintained until at least 3 days (72 hours) after resolution of fever and myalgia without the use of antipyretics OR at least 7 days have passed since symptom onset, whichever is longer.

7-Day Domestic by Island Moving Average Daily Passenger Volume

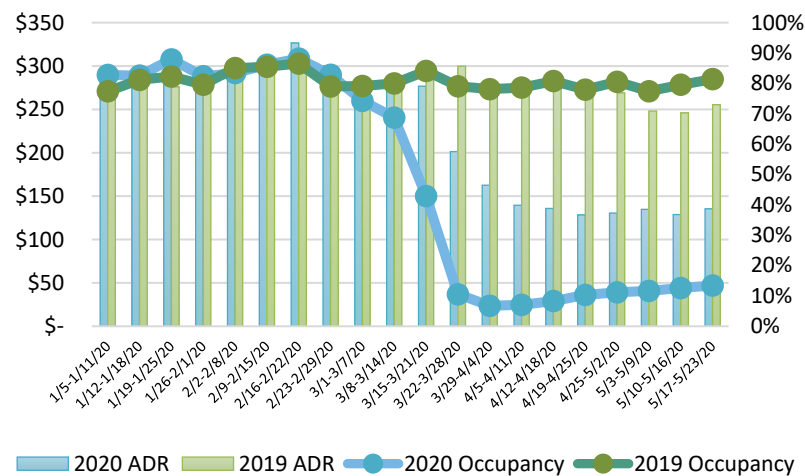
2020 Volume as Percentage of 2019 Volume

Through May 28, 2020



Source: HVCB analysis based on data from DBEDT
Note: Passenger volume figures include both visitors and residents.

State of Hawai'i Hotel Performance by Week - 2020 vs 2019



Hawaii Hotel Performance Info:

For the week of May 17 – May 23, 2020

	Occupancy	ADR	RevPAR
State of Hawaii	13.4%	\$ 135.39	\$ 18.18
Oahu	12.7%	\$ 143.62	\$ 18.20
Maui County	12.8%	\$ 143.81	\$ 18.44
Kauai County	12.3%	\$ 127.47	\$ 18.44
Island of Hawaii	17.9%	\$ 108.54	\$ 19.43

Domestic by Island Month-to-Date and Year-to-Date Daily Passenger Volume

2020 Volume versus 2019 Volume

Through May 28, 2020

May 2020 (Month-to-Date through May 28)

	2020	2019	Volume Change	Percent Change
Honolulu	17,690	365,616	-347,926	-95.2%
Maui County	726	174,140	-173,414	-99.6%
Island of Hawai'i	749	72,590	-71,841	-99.0%
Kaua'i	288	61,819	-61,531	-99.5%
Total	19,453	674,165	-654,712	-97.1%

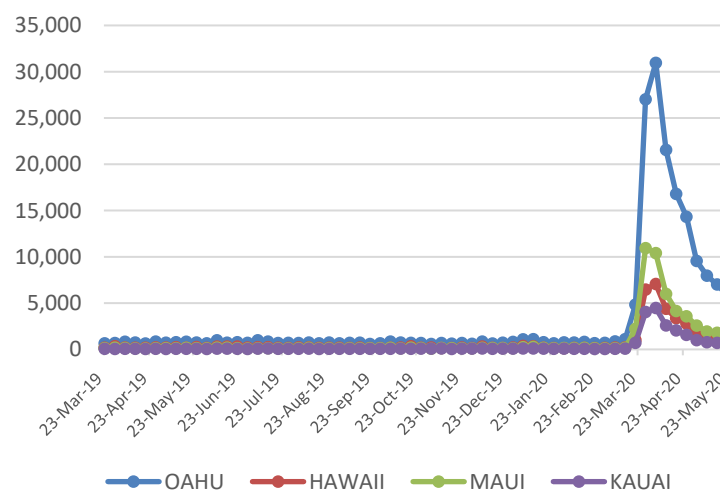
2020 (Year-to-Date through May 28)

	2020	2019	Volume Change	Percent Change
Honolulu	989,921	1,796,878	-806,957	-44.9%
Maui County	442,306	840,841	-398,535	-47.4%
Island of Hawai'i	217,503	396,746	-179,243	-45.2%
Kaua'i	149,134	295,397	-146,263	-49.5%
Total	1,798,864	3,329,862	-1,530,998	-46.0%

Source: HVCB analysis based on data from DBEDT

Note: Passenger volume figures include both visitors and residents. Total includes other international passengers. 2020 includes one additional day due to Leap Year (February 29th, 2020).

2020 Initial Weekly Unemployment Claims by Island



Weekly Unemployment Initial Claims: May 23, 2020

State of Hawaii	9,160
C&C of Oahu	5,851
Hawaii County	1,148
Maui County	1,349
Kauai County	611
Agent (filed in Hawaii against another state)	201

News Highlights

May 29, 2020

Hawaii News Now: [Tourism](#)

Authority: With traveler quarantine in place, Hawaii saw 4,500 visitors in April

Honolulu Star-Advertiser: [Visitor arrivals to Hawaii declined 99.5% in April, tourism recovery still far out](#)

KITV4: [Governor Ige and mayors want to make sure the proper quarantine protocols are in place](#)

KITV4: [New proposal plans from senators meant to help restart tourism in Hawaii](#)

KITV4: [Car rental industry running out of gas because of COVID-19](#)

Honolulu Star-Advertiser: [Hawaii explores 'travel bubble' with Japan amid tourism collapse](#)

The Maui News: [23 hotels in county still open earlier in May](#)

Honolulu Civil Beat: [Tensions Grow Over How — And When — To Reopen Tourism](#)

PBS Hawaii: [INSIGHTS ON PBS HAWAII What's it Going to Take? Managing Tourism in Hawaii](#)

The New York Times: [Hawaii Governor to Extend Traveler Quarantine Past June](#)

Helpful Resources

Department of Health
<https://hawaiiocovid19.com/>

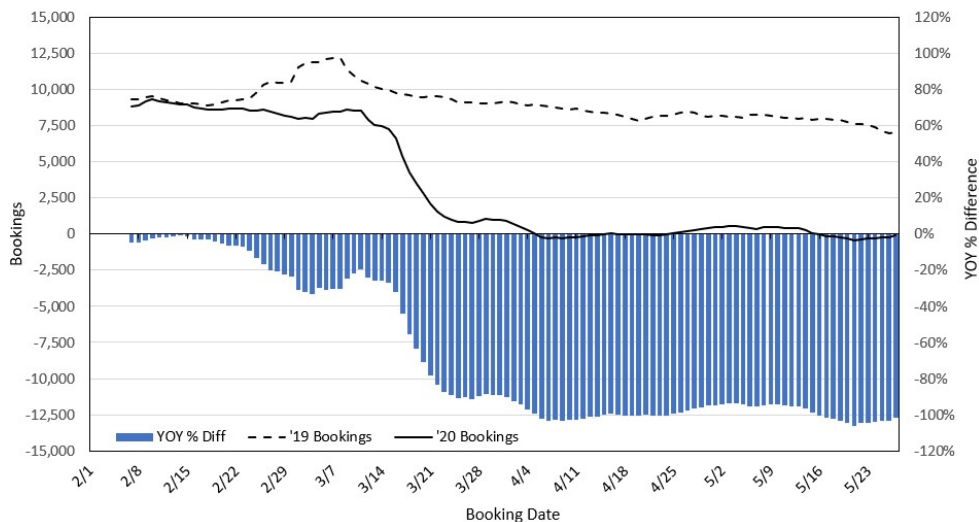
Department of Health
<https://health.hawaii.gov/docd/advisories/novel-coronavirus-2019>

Dept. of Business, Economic Development & Tourism
<https://dbedt.hawaii.gov/economic/covid19/>

Department of Transportation
<https://hidot.hawaii.gov/coronavirus/>

Travel Agency Bookings to Hawaii for Future Arrivals* Based on a 7-day Moving Average, 2020 vs 2019 U.S.

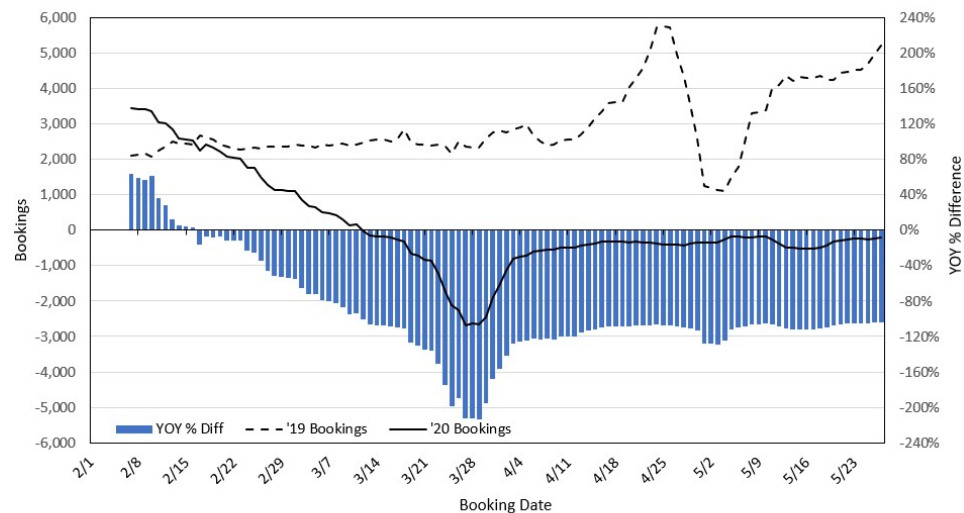
TextBox 1



*Future Arrivals refers to all arrivals that are 'future' relative to the referenced booking date.
Source: Global Agency Pro

Update: May 27, 2020

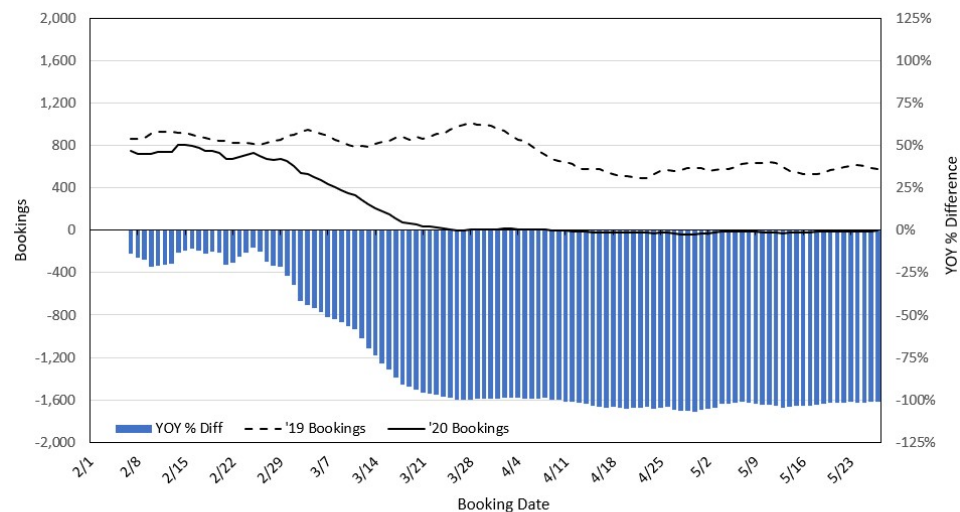
Travel Agency Bookings to Hawaii for Future Arrivals* Based on a 7-day Moving Average, 2020 vs 2019 Japan



*Future Arrivals refers to all arrivals that are 'future' relative to the referenced booking date.
Source: Global Agency Pro

Update: May 27, 2020

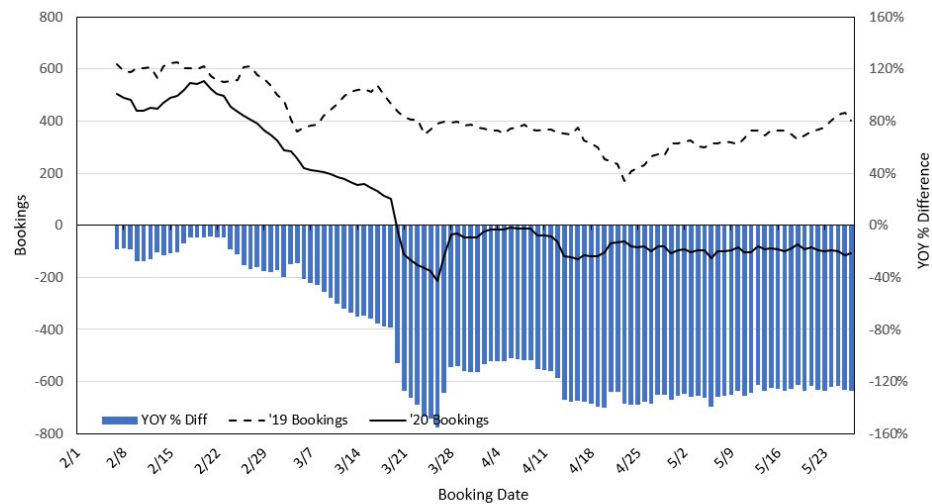
Travel Agency Bookings to Hawaii for Future Arrivals* Based on a 7-day Moving Average, 2020 vs 2019 Canada



*Future Arrivals refers to all arrivals that are 'future' relative to the referenced booking date.
Source: Global Agency Pro

Update: May 27, 2020

Travel Agency Bookings to Hawaii for Future Arrivals* Based on a 7-day Moving Average, 2020 vs 2019 Australia



*Future Arrivals refers to all arrivals that are 'future' relative to the referenced booking date.
Source: Global Agency Pro

Update: May 27, 2020