



COVID-19 UPDATE

(Issued: 3/20/20 @ 12:30pm)

Impact on Wholesale Partners

CANADA: Vancouver City is about to declare a state of emergency to keep people off the streets. All airlines and travel industry partners are laying off employees, some for a specific period of time and some are simply being let go.

OCEANIA: The Australian and New Zealand governments have imposed a ban to close its borders to any non-citizens or residents.

MALAYSIA: Currently in its 3rd day of nationwide semi-lockdown. No Malaysians are allowed to travel abroad during this 14-day period.

THAILAND: Bangkok and Phuket have closed all schools and entertainment outlets including restaurants for 14 days. The Thai government also announced that their Songkran Festival (Thai New Year) will be postponed.

SINGAPORE: Has expanded its travel restrictions to include ASEAN countries, Japan, Switzerland, and UK. Singapore Airlines have announced to only fly 50% of their capacity until end of April.

JAPAN: Has reported 1 death and 121 cases of people who have COVID-19.

Department of Health Update

COVID-19 Positive* Cases
 Cumulative totals as of 12:00pm on March 20, 2020

Total (new)	37 (11)
County of Hawaii	1 (0)
City & County of Honolulu	28 (10)
County Kauai	3 (1)
County of Maui	5 (0)
* Includes presumptive and confirmed	

Impact on Airlines & Cruise

The airlines that still have routes to Hawaii continue to decrease in load factor.

AIR CANADA: A union official has revealed that Air Canada is laying off more than 5,000 flight attendants as the airline suspends service due to COVID-19.

HAWAIIAN AIRLINES: Announced specific service reductions to Hawaii from Las Vegas, Portland, Seattle, San Diego, LA, San Francisco, Oakland, San Jose, Sacramento, Phenix, Boston and New York. Effective 3/19, Californians have been ordered to stay home (except for critical services) until further notice.

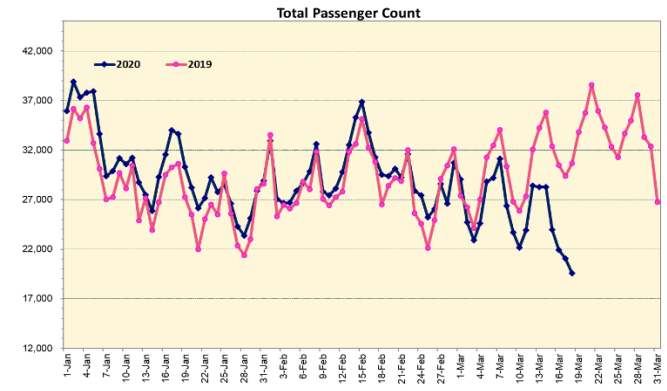
KOREAN AIR: Is decreasing its frequency of its daily Incheon-Paris route to 3 times a week from 3/25. Asiana Airlines has been further paring the service to U.S. destinations. Incheon - Honolulu (OZ232) will implement an additional suspension on 3/26 and 3/28. This flight will start services from 3/29 - 4/29 with 3 times weekly flights (Sunday, Monday, Wednesday).

Impact on Hotels

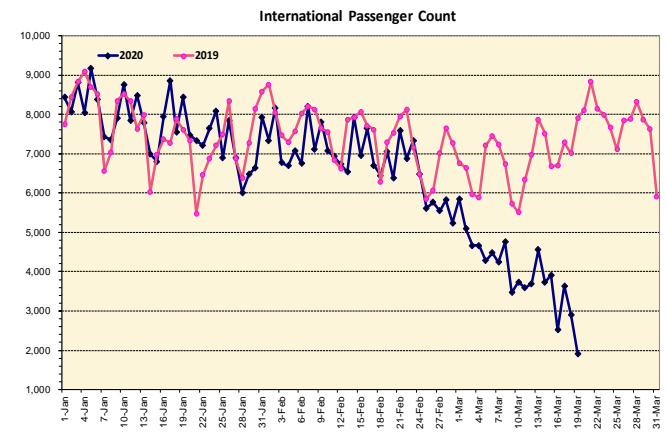
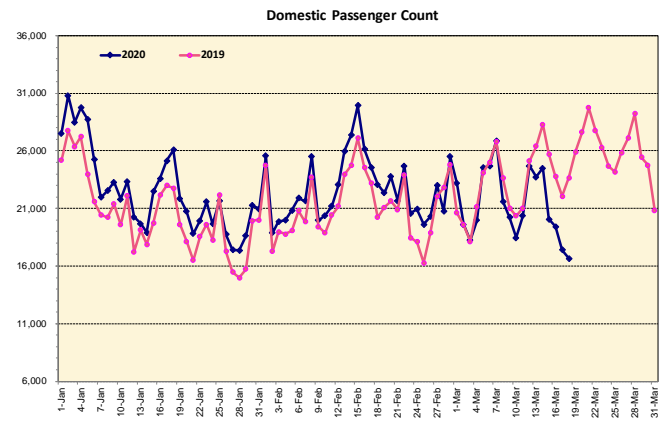
Several hotels reported that they had a general staff meeting where the present state of the situation was reported. Many furloughs and lay offs were made shortly there after.

Friendly Reminders:

- Wash your hands often with soap and water for at least 20 seconds.
- Avoid touching your eyes, nose, and mouth with unwashed hands.
- Avoid close contact with people who are sick.
- Stay home when you are sick.
- Cover your cough/sneeze with a tissue & throw away.
- Clean and disinfect frequently touched objects/surfaces using a regular household cleaning spray or wipe.

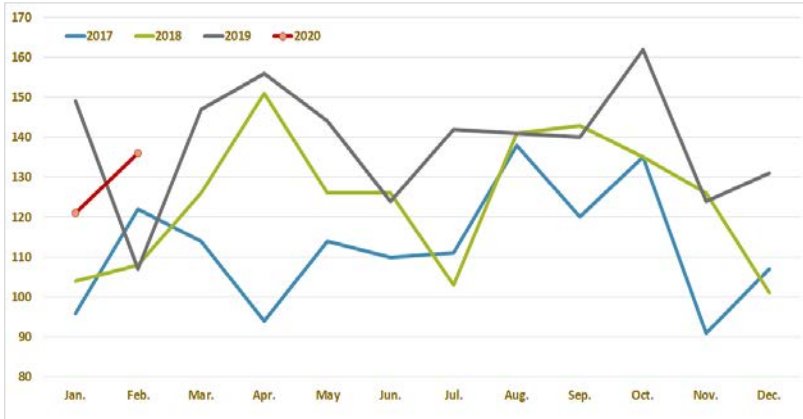


Note: Excludes flights from Canada

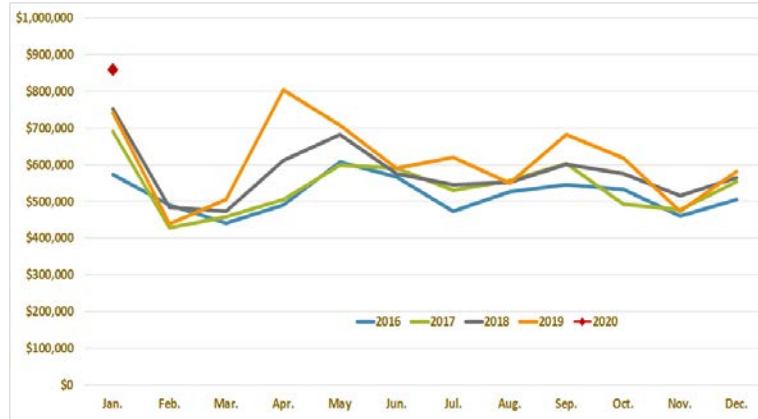


Note: Excludes flights from Canada

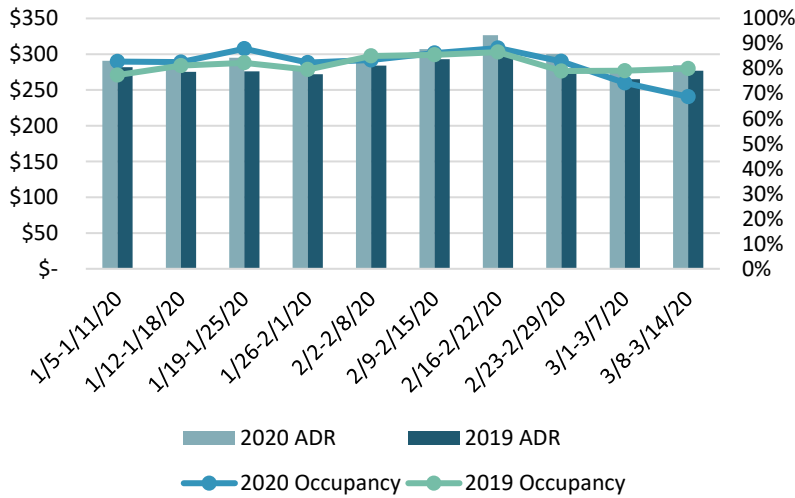
Bankruptcy Filings All Chapters 2017 to 2020



General Fund Tax Revenue 2016 to 2020



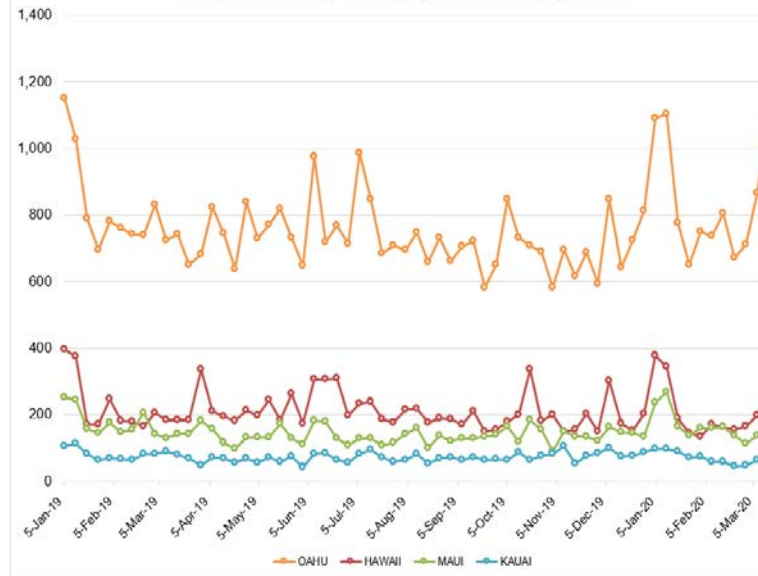
State of Hawai'i Hotel Performance by Week 2020 vs 2019



Hawaii Hotel Performance Info: For the week of March 8-14, 2020

	Occupancy	ADR	RevPAR
State of Hawaii	68.7%	\$ 284.57	\$ 195.57
Oahu	64.5%	\$ 220.68	\$ 142.24
Maui County	75.0%	\$ 417.75	\$ 313.24
Kauai County	78.0%	\$ 304.78	\$ 237.85
Island of Hawaii	70.8%	\$ 271.57	\$ 192.24
Kohala Coast	69.7%	\$ 390.31	\$ 272.18

2020 Initial Weekly Unemployment Claims by Island



Weekly Unemployment Initial Claims: March 14, 2020

State of Hawaii	1,595
City and County of Honolulu	1,108
Maui County	166
Hawaii County	217
Kauai County	84
Agent (filed in Hawaii against another state)	18

News Highlights

March 20, 2020

Hawaii News Now: [LIST: Here's how the state and each island is responding to coronavirus](#)

Hawaii News Now: [A major Waikiki hotel closes its doors to encourage visitors to return home safely](#)

Honolulu Star-Advertiser: [City pulls lifeguards from Oahu beaches](#)

Pacific Business News: [Hawaii hotels saw growth in occupancy in February, before coronavirus impacts](#)

Hawaii Tribune-Herald: [Green urges quarantine as people arrive in Hawaii](#)

Honolulu Civil Beat: [10 New Coronavirus Cases Reported In Hawaii](#)

Honolulu Star Advertiser: [Convention that could bring 20,000 canceled](#)

ABC News: [Global coronavirus death toll surpasses 10,000, California governor asks all 39M residents to stay at home](#)

Forbes: [Hawaii Travel Update: New Closures, Restrictions For COVID-19](#)

Phocus Wire: ["What just happened?" - Tours and activities come to grips with coronavirus](#)

Helpful Resources

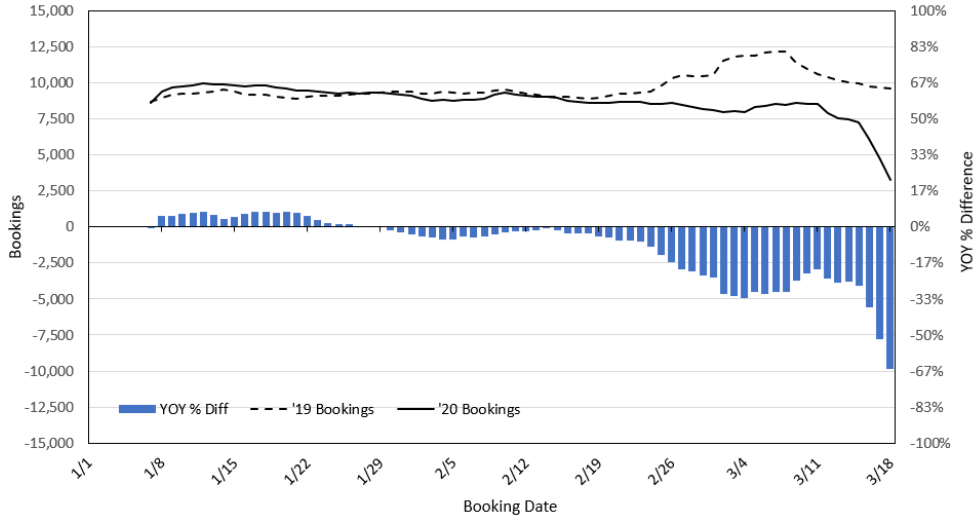
Department of Health
<https://hawaiicovid19.com/>

Department of Health
<https://health.hawaii.gov/docd/advisories/nov-el-coronavirus-2019>

Dept. of Business, Economic Development & Tourism
<https://dbedt.hawaii.gov/economic/covid19/>

Department of Transportation
<https://hidot.hawaii.gov/coronavirus/>

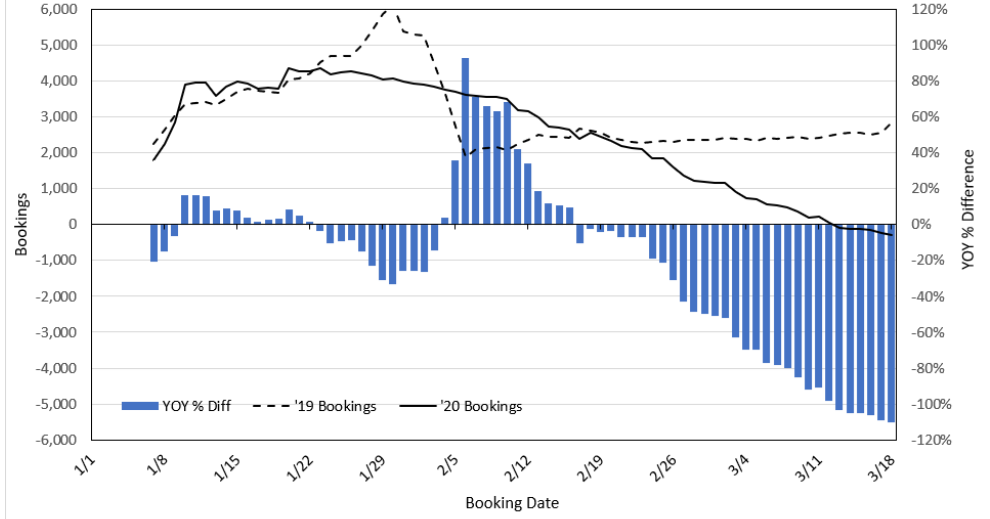
Travel Agency Bookings to Hawaii for Future Arrivals*
Based on a 7-day Moving Average, 2020 vs 2019
U.S.



*Future Arrivals refers to all arrivals that are 'future' relative to the referenced booking date.
 Source: Global Agency Pro

Update: Mar 18, 2020

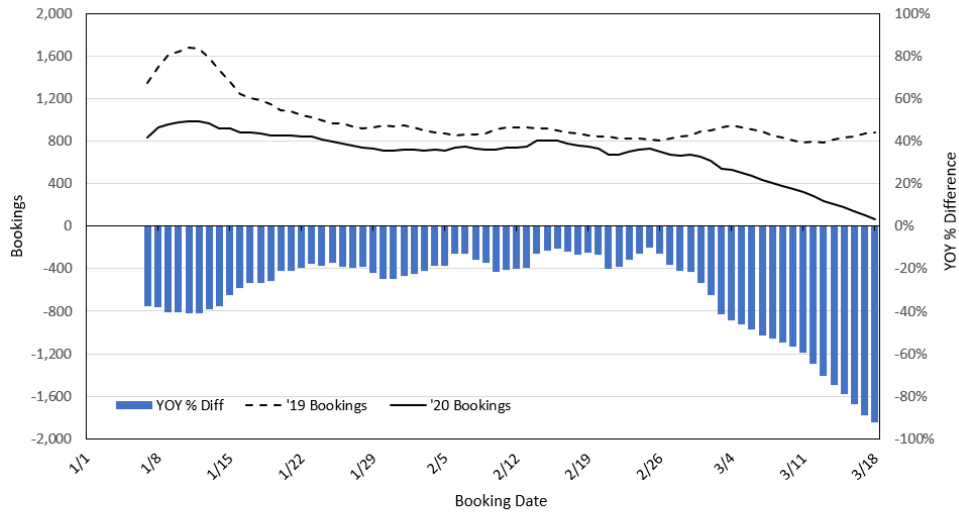
Travel Agency Bookings to Hawaii for Future Arrivals*
Based on a 7-day Moving Average, 2020 vs 2019
Japan



*Future Arrivals refers to all arrivals that are 'future' relative to the referenced booking date.
 Source: Global Agency Pro

Update: Mar 18, 2020

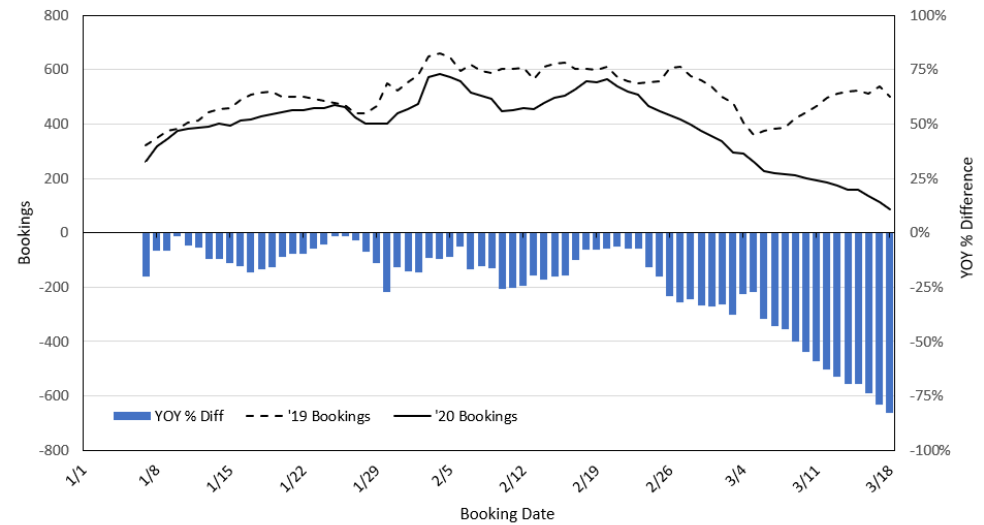
Travel Agency Bookings to Hawaii for Future Arrivals*
Based on a 7-day Moving Average, 2020 vs 2019
Canada



*Future Arrivals refers to all arrivals that are 'future' relative to the referenced booking date.
 Source: Global Agency Pro

Update: Mar 18, 2020

Travel Agency Bookings to Hawaii for Future Arrivals*
Based on a 7-day Moving Average, 2020 vs 2019
Australia



*Future Arrivals refers to all arrivals that are 'future' relative to the referenced booking date.
 Source: Global Agency Pro

Update: Mar 18, 2020