

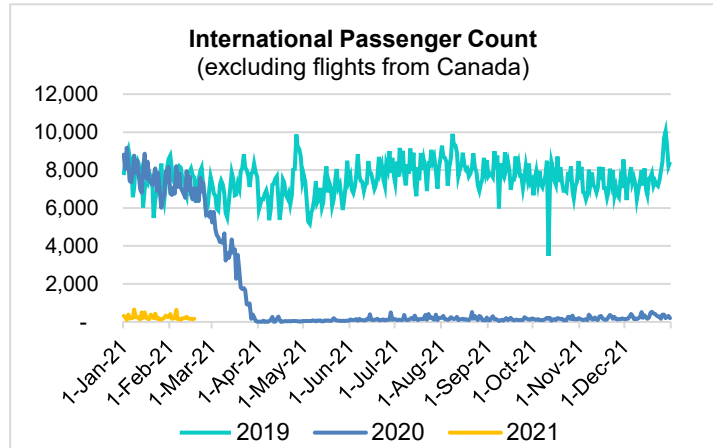
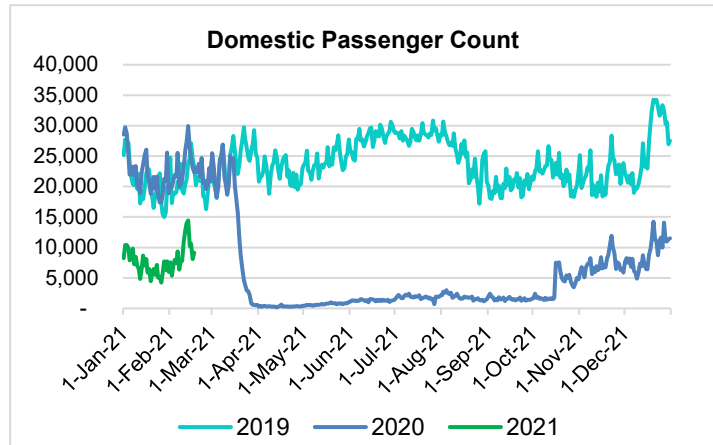
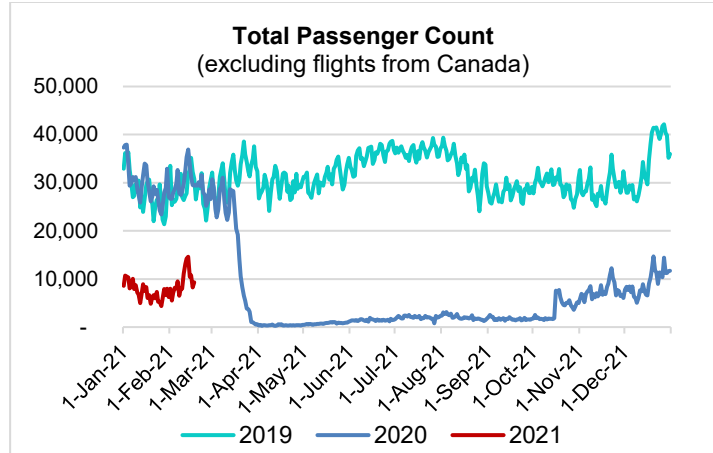
HTA COVID-19 UPDATE

(Issued: 2/18/21 @ 4:30pm)

Reason for Trip by Arrival Airport - Transpacific Screened Passengers as of 02/17/21	Honolulu (HNL)	Kahului (OGG)	Kona (KOA)	Lihue (LIH)	Grand Total
Airline Crew	398	194	100	17	709
Connecting Flight (Transit)	274	15	1	0	290
Corporate Meeting	5	7	0	0	12
Essential Worker	85	34	11	1	131
Honeymoon	8	2	3	0	13
Incentive Trip	1	4	0	0	5
Intended Resident	48	12	14	2	76
Military or Federal Government	76	0	1	0	77
Other	67	25	5	1	98
Other Business	59	30	12	4	105
Pleasure/Vacation	2,431	2,504	949	48	5,932
Returning Resident	764	159	101	22	1,046
To Attend School	7	0	5	0	12
To Get Married	7	1	4	2	14
Visiting Friends or Relatives	928	222	198	17	1,365
Grand Total	5,158	3,209	1,404	114	9,885

Source: Safe Travels program developed by the State of Hawaii Office of Enterprise Technology Services

Note: The data is preliminary and subject to change



Daily Passenger Count Table

02/17/2021	Domestic	International	Total
Oahu	4971	161	5132
Maui	2850		2850
Island of Hawaii	1238		1238
Kauai	97		97
State	9156	161	9317

Novel Coronavirus in Hawaii

COVID-19 Positive Cases

Cumulative totals as of 12:00pm on February 18, 2021

Total Confirmed Cases	27,000* (67 new)
Hawaii	2,224
Kauai	180
Lanai	108
Maui	1966†
Molokai	27
Oahu	21,695
Out of State	800
Pending	0
Required Hospitalization	1806‡
Hawaii Deaths	428
Cases in the past 14 days	769*

Footnotes for COVID-19 Cases

*As a result of updated information, two cases on Maui were removed from the counts, and one case was re-categorized from Maui to Molokai. Due to an interruption of electronic laboratory reporting, our case count was lower than the true number of new cases. We expect to see catch-up reporting of the additional cases over the next 1 to 2 days.

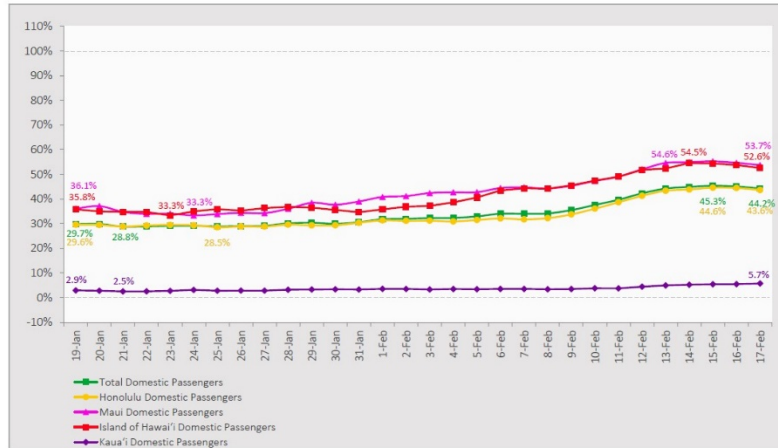
**Using cases reported in the past 14 days provides a rough approximation of the number of cases currently meeting criteria for isolation. This proxy number for "active cases" resolves classification issues for cases unable to be reached or who are out of jurisdiction, for whom precise release from isolation date may not be possible to determine. It is also not influenced by lags in data entry. (This total does not include Hawaii residents diagnosed outside of Hawaii)

†One case is a Lanai resident whose exposure is on Maui Island and who will be remaining on Maui Island for the interim.

‡Includes Hawaii residents hospitalized out of state.

7-Day Domestic by Island Moving Average Daily Passenger Volume

2021 Volume as Percentage of 2020 Volume
Through February 17, 2021



Source: HVCB analysis based on data from DBEDT
Note: Passenger volume figures include both visitors and residents.

Domestic by Island Month-to-Date and Year-to-Date Daily Passenger Volume

2021 Volume versus 2020 Volume
Through February 17, 2021

February 2021 (Month-to-Date through February 17)

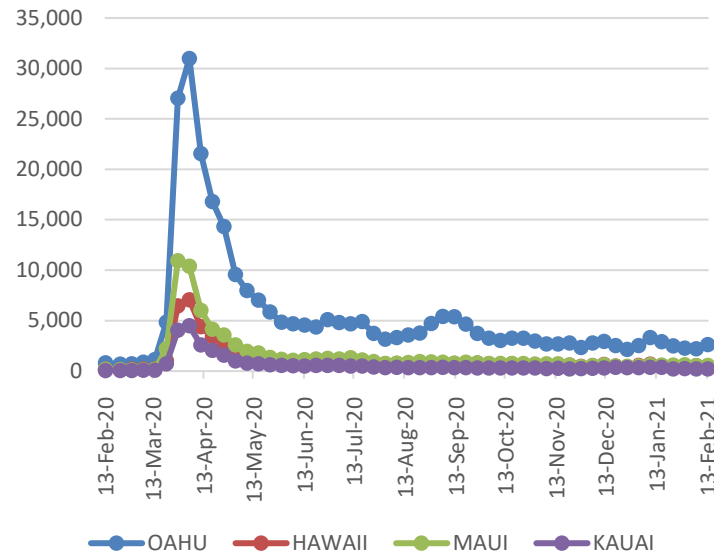
	2021	2020	Volume Change	Percent Change
Honolulu	80,863	208,432	-127,569	-61.2%
Maui County	50,738	101,405	-50,667	-50.0%
Island of Hawai'i	23,770	48,887	-25,117	-51.4%
Kaua'i	1,510	34,101	-32,591	-95.6%
Total	156,881	392,825	-235,944	-60.1%

2021 (Year-to-Date through February 17)

	2021	2020	Volume Change	Percent Change
Honolulu	205,633	593,258	-387,625	-65.3%
Maui County	113,474	272,877	-159,403	-58.4%
Island of Hawai'i	53,691	132,751	-79,060	-59.6%
Kaua'i	3,347	92,232	-88,885	-96.4%
Total	376,145	1,091,118	-714,973	-65.5%

Source: HVCB analysis based on data from DBEDT
Note: Passenger volume figures include both visitors and residents. Total includes other international passengers.

2021 Initial Weekly Unemployment Claims by Island



Weekly Unemployment Initial Claims: February 13, 2021

State of Hawaii	3,907
C&C of Oahu	2,626
Honolulu	1,052
Kaneohe	316
Waipahu	1,258
Hawaii County	429
Hilo	249
Kona	180
Maui County	538
Wailuku	522
Molokai	16
Kauai County	196
Agent (filed in Hawaii against another state)	118

News Highlights

February 18, 2021

KHON2: [How do we know the COVID-19 vaccines are safe?](#)

KITV4: [Hawaii launches work from home pilot project](#)

The Maui News: [Visitors arrested, fly back to Oahu](#)

Maui Now: [Survey: Hawaii is the 2nd Safest State During COVID-19](#)

Maui Now: [Maui Tourists Will Find Most Activities Available and Businesses Open, But With Limitations](#)

Departures: [Fully Vaccinated Americans Won't Need to Quarantine After COVID-19 Exposure, CDC Says](#)

New York Post: [Tourists accused of bribing Hawaii airport screener to skip quarantine](#)

SF Gate: [Hawaii is developing a 'vaccine passport' that would allow travelers to skip quarantine](#)

Traveling For Miles: [Flying To Hawaii? Here's How To Find An Approved Covid Testing Site](#)

Helpful Resources

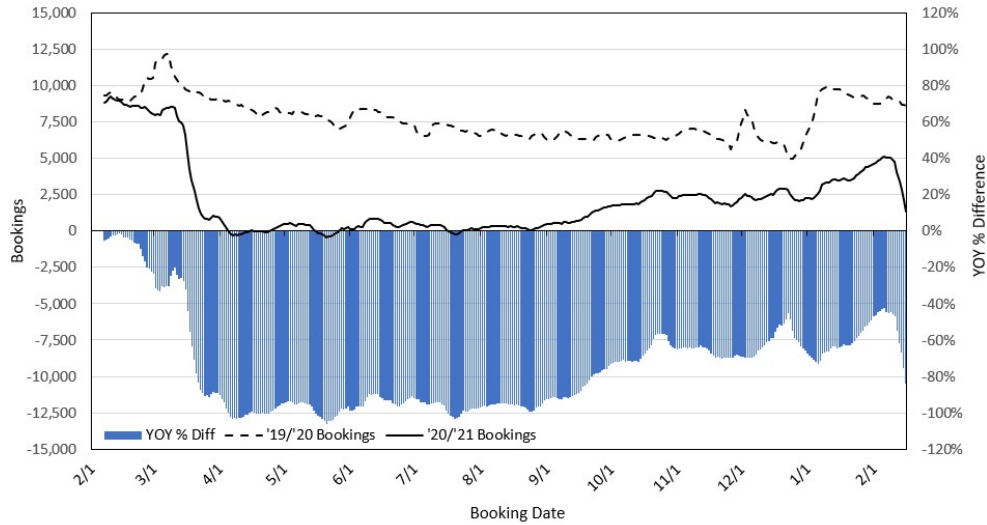
Department of Health
<https://hawaiiicovid19.com/>

Hawaii Tourism Authority
<https://www.hawaiitourismauthority.org/covid-19-updates/>

Dept. of Business, Economic Development & Tourism
<https://dbedt.hawaii.gov/economic/covid19/>

Department of Transportation
<https://hidot.hawaii.gov/coronavirus/>

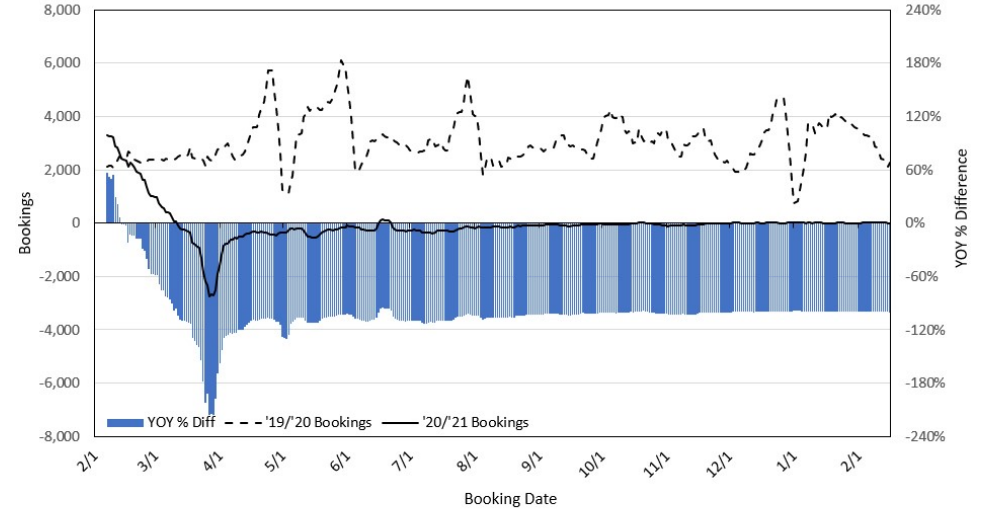
Travel Agency Bookings to Hawaii for Future Arrivals* Based on a 7-day Moving Average as of February 16, 2021 U.S.



*Future Arrivals refers to all arrivals that are 'future' relative to the referenced booking date.
Source: Global Agency Pro

Update: Feb 16, 2021

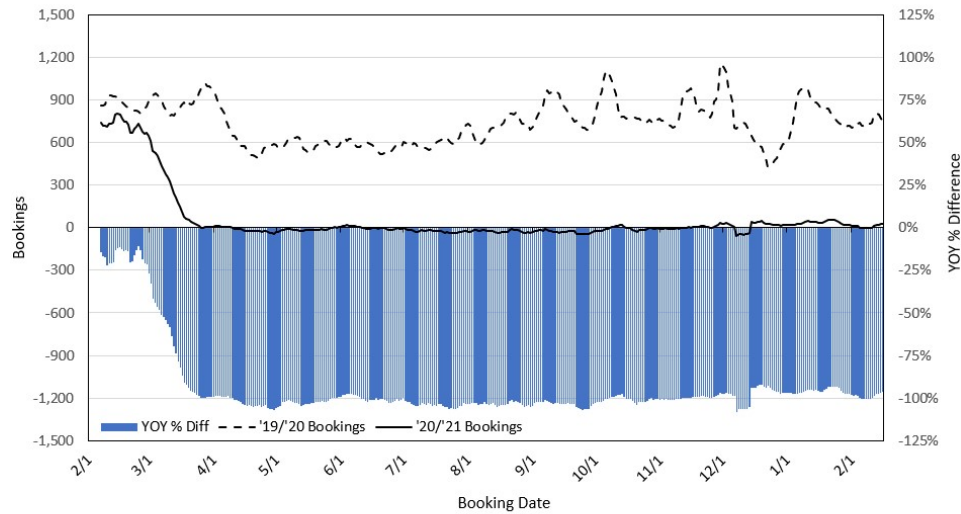
Travel Agency Bookings to Hawaii for Future Arrivals* Based on a 7-day Moving Average as of February 16, 2021 Japan



*Future Arrivals refers to all arrivals that are 'future' relative to the referenced booking date.
Source: Global Agency Pro

Update: Feb 16, 2021

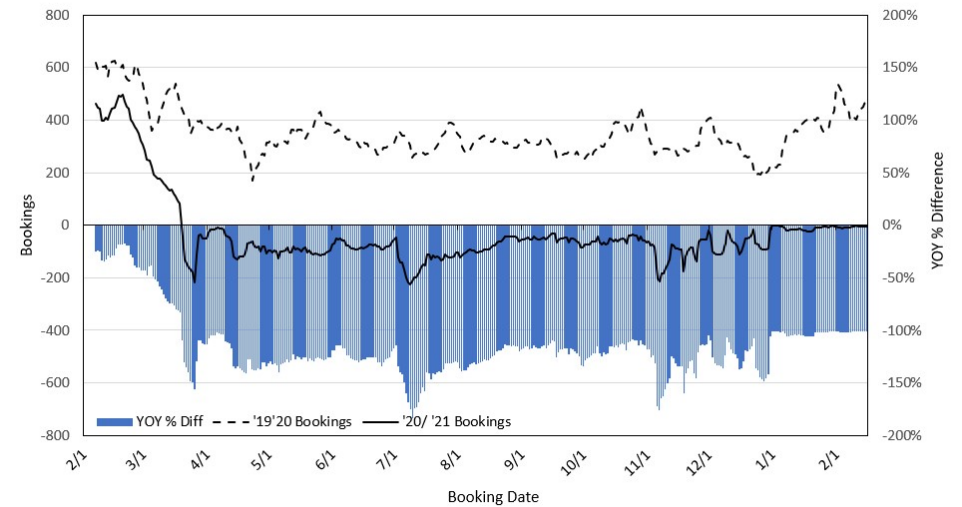
Travel Agency Bookings to Hawaii for Future Arrivals* Based on a 7-day Moving Average as of February 16, 2021 Canada



*Future Arrivals refers to all arrivals that are 'future' relative to the referenced booking date.
Source: Global Agency Pro

Update: Feb 16, 2021

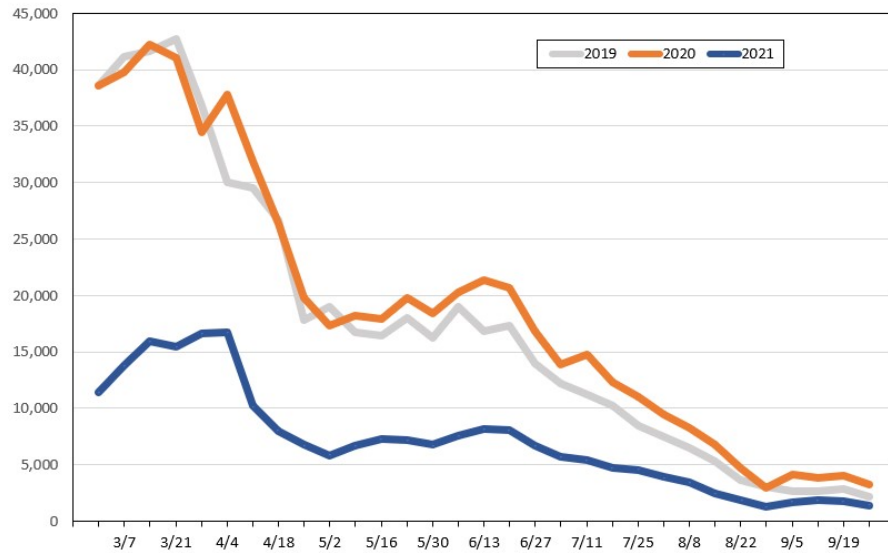
Travel Agency Bookings to Hawaii for Future Arrivals* Based on a 7-day Moving Average as of February 16, 2021 Australia



*Future Arrivals refers to all arrivals that are 'future' relative to the referenced booking date.
Source: Global Agency Pro

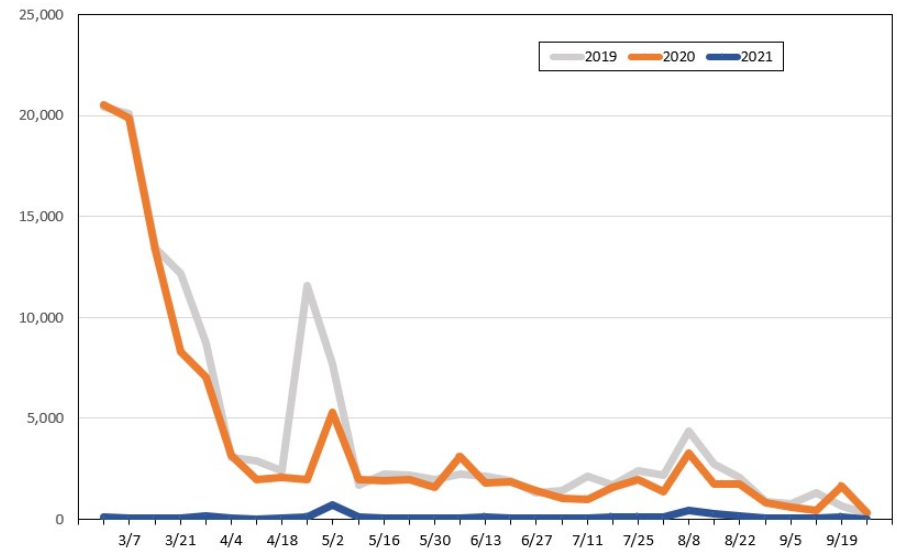
Update: Feb 16, 2021

Travel Agency Weekly Bookings for Future Travel to Hawai'i as of February 16, 2021
U.S.



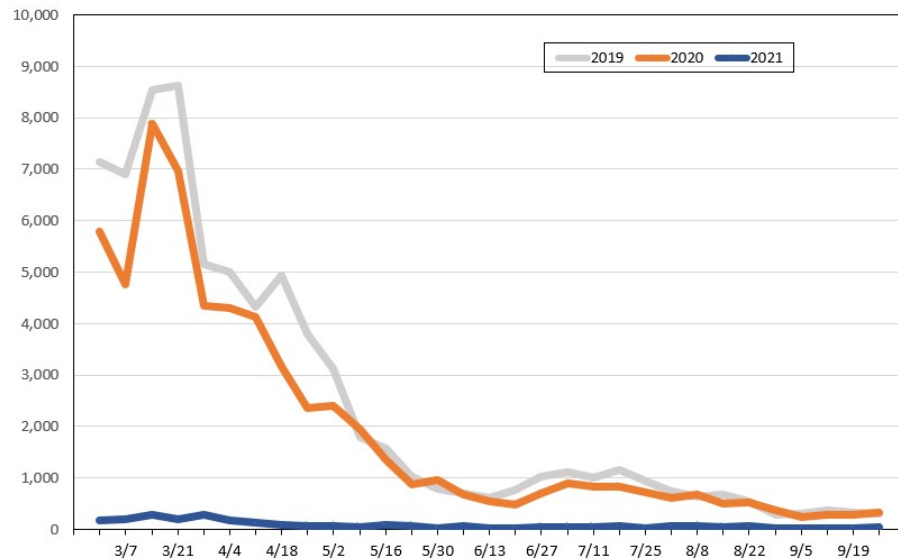
Source: Global Agency Pro, as of February 16, 2021

Travel Agency Weekly Bookings for Future Travel to Hawai'i as of February 16, 2021
Japan



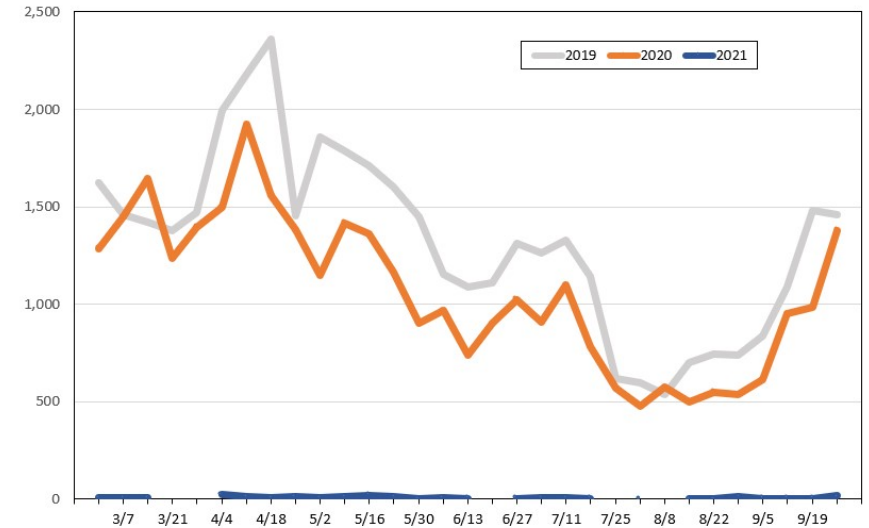
Source: Global Agency Pro, as of February 16, 2021

Travel Agency Weekly Bookings for Future Travel to Hawai'i as of February 16, 2021
Canada



Source: Global Agency Pro, as of February 16, 2021

Travel Agency Weekly Bookings for Future Travel to Hawai'i as of February 16, 2021
Australia



Source: Global Agency Pro, as of February 16, 2021