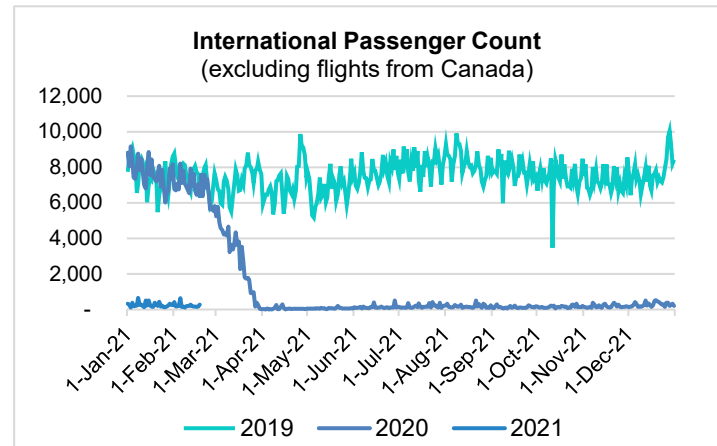
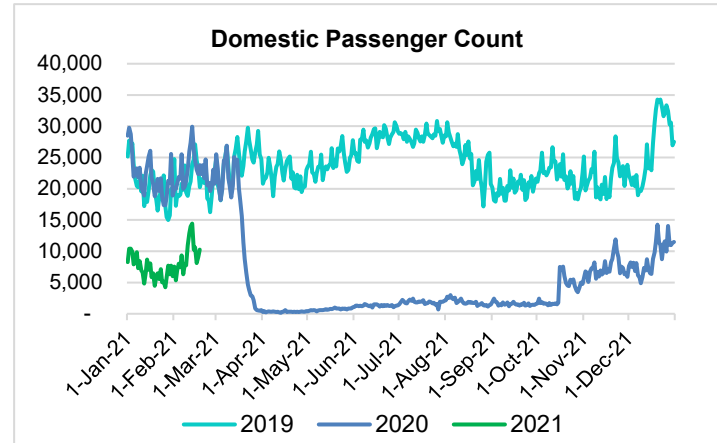
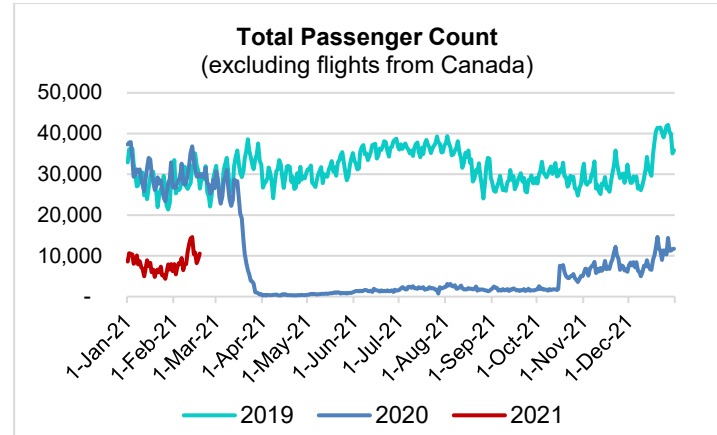


HTA COVID-19 UPDATE

(Issued: 2/19/21 @ 4:30pm)

Reason for Trip by Arrival Airport - Transpacific Screened Passengers as of 02/18/21	Honolulu (HNL)	Kahului (OGG)	Kona (KOA)	Lihue (LIH)	Grand Total
Airline Crew	441	184	114	18	757
Connecting Flight (Transit)	287	12	0	0	299
Corporate Meeting	2	5	1	0	8
Essential Worker	102	20	12	10	144
Honeymoon	10	0	1	0	11
Incentive Trip	0	5	0	0	5
Intended Resident	93	28	18	11	150
Military or Federal Government	111	2	1	0	114
Other	93	22	17	0	132
Other Business	58	30	18	2	108
Pleasure/Vacation	3,353	2,658	1,258	68	7,337
Returning Resident	805	141	108	24	1,078
Sports Event	3	0	0	0	3
To Attend School	11	2	0	0	13
To Get Married	7	5	1	2	15
Visiting Friends or Relatives	1,192	313	292	17	1,814
Grand Total	6,568	3,427	1,841	152	11,988

Source: Safe Travels program developed by the State of Hawaii Office of Enterprise Technology Services
Note: The data is preliminary and subject to change



Daily Passenger Count Table

02/18/2021	Domestic	International	Total
Oahu	5331	277	5608
Maui	3069		3069
Island of Hawaii	1735		1735
Kauai	133		133
State	10268	277	10545

Novel Coronavirus in Hawaii

COVID-19 Positive Cases

Cumulative totals as of 12:00pm on February 19, 2021

Total Confirmed Cases	27,048* (50 new)
Hawaii	2,226
Kauai	180
Lanai	108
Maui	1987†
Molokai	27
Oahu	21,716
Out of State	804
Pending	0
Required Hospitalization	1815‡
Hawaii Deaths	430
Cases in the past 14 days	722*

Footnotes for COVID-19 Cases

*As a result of updated information, one case on Oahu was recategorized to Maui, and one case on Oahu and one case on Maui were removed from the counts.

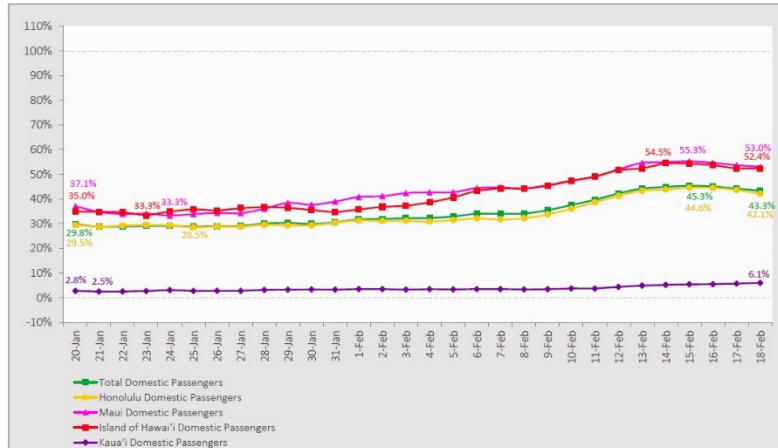
**Using cases reported in the past 14 days provides a rough approximation of the number of cases currently meeting criteria for isolation. This proxy number for "active cases" resolves classification issues for cases unable to be reached or who are out of jurisdiction, for whom precise release from isolation date may not be possible to determine. It is also not influenced by lags in data entry. (This total does not include Hawaii residents diagnosed outside of Hawaii)

†One case is a Lanai resident whose exposure is on Maui Island and who will be remaining on Maui Island for the interim.

‡Includes Hawaii residents hospitalized out of state.

7-Day Domestic by Island Moving Average Daily Passenger Volume

2021 Volume as Percentage of 2020 Volume
Through February 18, 2021



Source: HVCB analysis based on data from DBEDT
Note: Passenger volume figures include both visitors and residents.

Domestic by Island Month-to-Date and Year-to-Date Daily Passenger Volume

2021 Volume versus 2020 Volume
Through February 18, 2021

February 2021 (Month-to-Date through February 18)

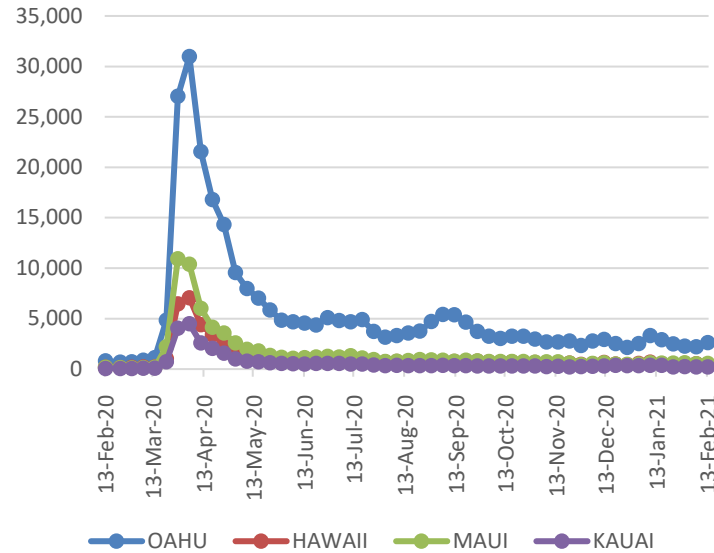
	2021	2020	Volume Change	Percent Change
Honolulu	86,194	220,934	-134,740	-61.0%
Maui County	53,807	107,467	-53,660	-49.9%
Island of Hawai'i	25,445	51,697	-26,252	-50.8%
Kaua'i	1,648	35,804	-34,156	-95.4%
Total	167,094	415,902	-248,808	-59.8%

2021 (Year-to-Date through February 18)

	2021	2020	Volume Change	Percent Change
Honolulu	210,964	605,760	-394,796	-65.2%
Maui County	116,543	278,939	-162,396	-58.2%
Island of Hawai'i	55,366	135,561	-80,195	-59.2%
Kaua'i	3,485	93,935	-90,450	-96.3%
Total	386,358	1,114,195	-727,837	-65.3%

Source: HVCB analysis based on data from DBEDT
Note: Passenger volume figures include both visitors and residents. Total includes other international passengers.

2021 Initial Weekly Unemployment Claims by Island



Weekly Unemployment Initial Claims: February 13, 2021

State of Hawaii	3,907
C&C of Oahu	2,626
Honolulu	1,052
Kaneohe	316
Waipahu	1,258
Hawaii County	429
Hilo	249
Kona	180
Maui County	538
Wailuku	522
Molokai	16
Kauai County	196
Agent (filed in Hawaii against another state)	118

News Highlights

February 19, 2021

Hawaii News Now: [Hundreds rally on Kauai to call for tourism reopening](#)

Hawaii News Now: [Some want a unified Hawaii travel program, critics argue it's not a 'one-size-fits-all' solution](#)

KITV4: [City says if Oahu meets Tier Three criteria next Wednesday more restrictions will lift next week](#)

Honolulu Civil Beat: [Hawaii Plans For Post-Pandemic Tourism, Starting With Kauai](#)

Maui Now: [Maui Tourists Will Find Most Activities Available and Businesses Open, But With Limitations](#)

West Hawaii Today: [Experts warn against COVID-19 variants as states reopen](#)

Hawaii Tribune-Herald: [Thousands could be vaccinated Saturday during large-scale clinic for UH, DOE employees](#)

Big Island Now: [Big Island's Coronavirus Decline Not Linked to Less Testing](#)

Helpful Resources

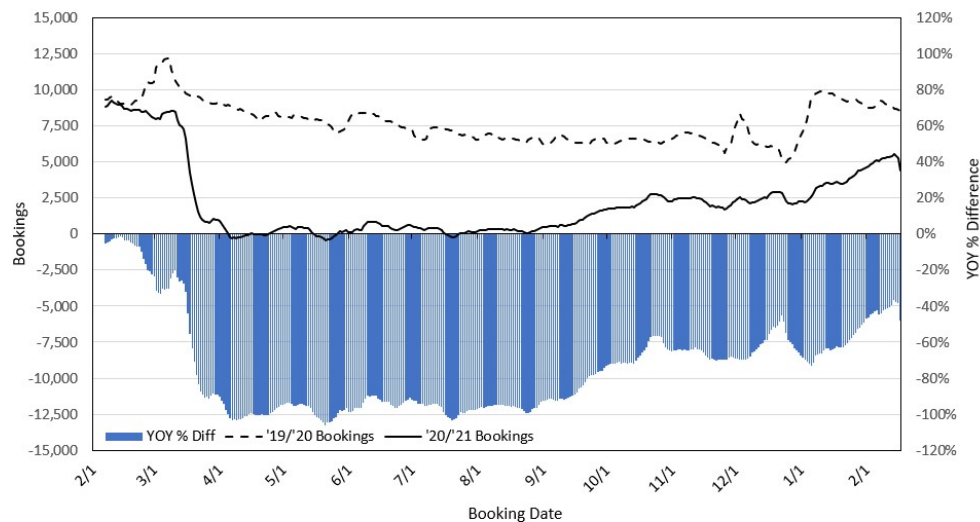
Department of Health
<https://hawaiiicovid19.com/>

Hawaii Tourism Authority
<https://www.hawaiitourismauthority.org/covid-19-updates/>

Dept. of Business, Economic Development & Tourism
<https://dbedt.hawaii.gov/economic/covid19/>

Department of Transportation
<https://hidot.hawaii.gov/coronavirus/>

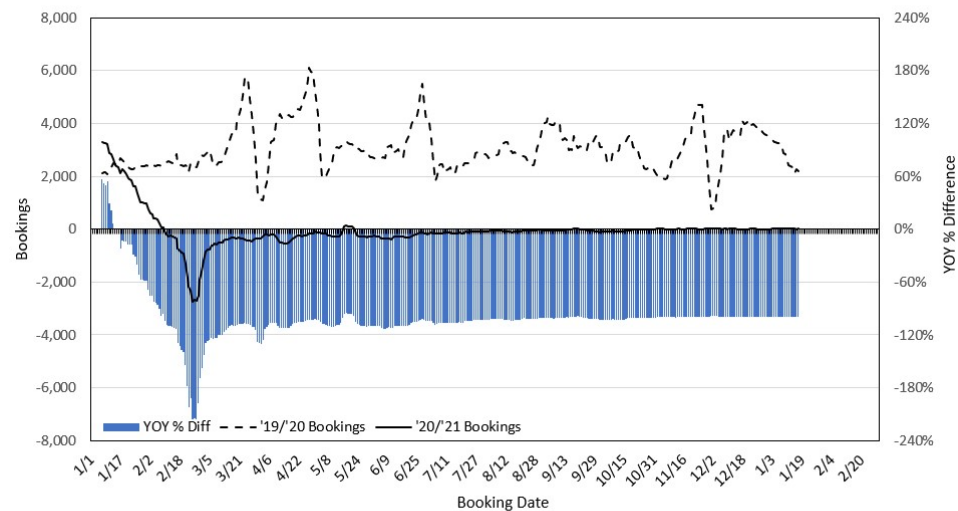
Travel Agency Bookings to Hawaii for Future Arrivals* Based on a 7-day Moving Average as of February 17, 2021 U.S.



*Future Arrivals refers to all arrivals that are 'future' relative to the referenced booking date.
Source: Global Agency Pro

Update: Feb 17, 2021

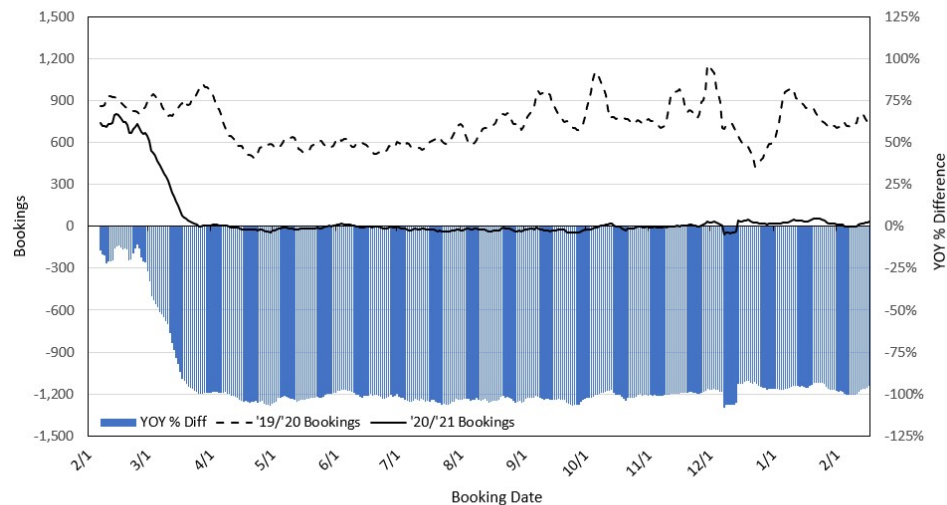
Travel Agency Bookings to Hawaii for Future Arrivals* Based on a 7-day Moving Average as of February 17, 2021 Japan



*Future Arrivals refers to all arrivals that are 'future' relative to the referenced booking date.
Source: Global Agency Pro

Update: Feb 17, 2021

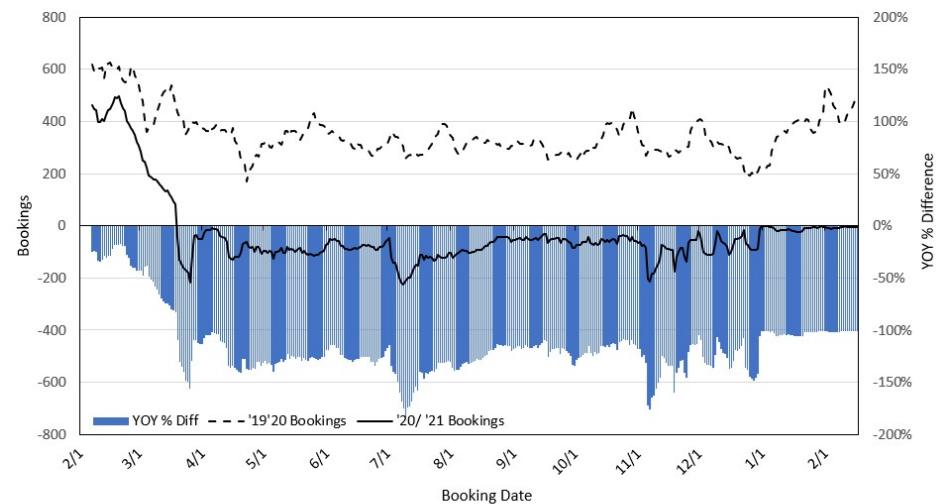
Travel Agency Bookings to Hawaii for Future Arrivals* Based on a 7-day Moving Average as of February 17, 2021 Canada



*Future Arrivals refers to all arrivals that are 'future' relative to the referenced booking date.
Source: Global Agency Pro

Update: Feb 17, 2021

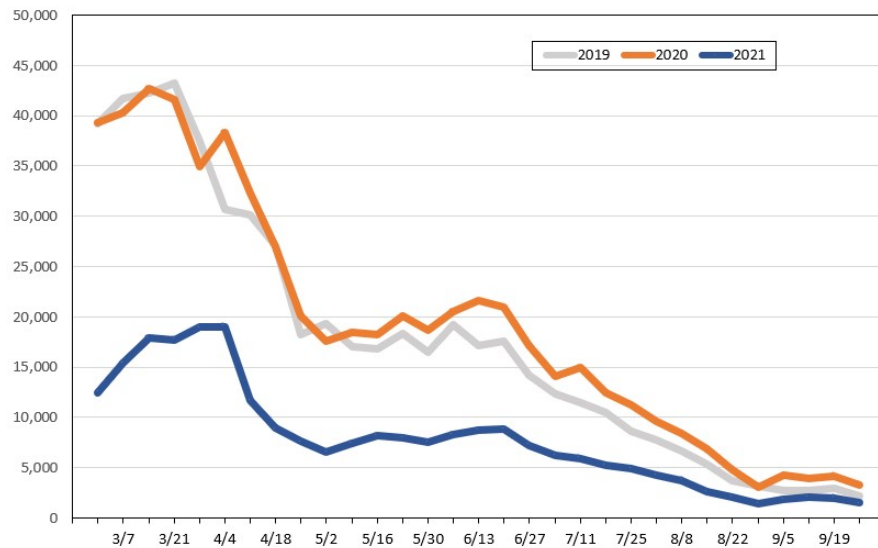
Travel Agency Bookings to Hawaii for Future Arrivals* Based on a 7-day Moving Average as of February 17, 2021 Australia



*Future Arrivals refers to all arrivals that are 'future' relative to the referenced booking date.
Source: Global Agency Pro

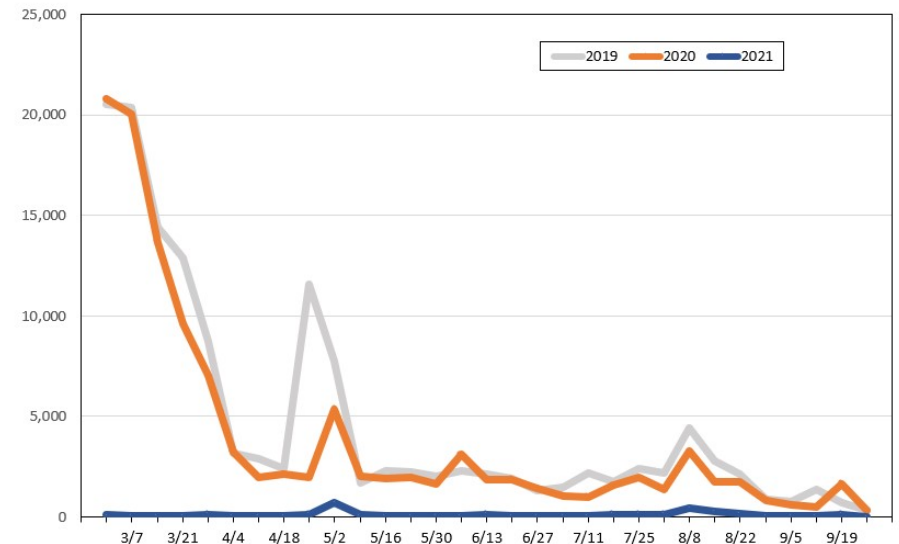
Update: Feb 17, 2021

Travel Agency Weekly Bookings for Future Travel to Hawai'i as of February 17, 2021
U.S.



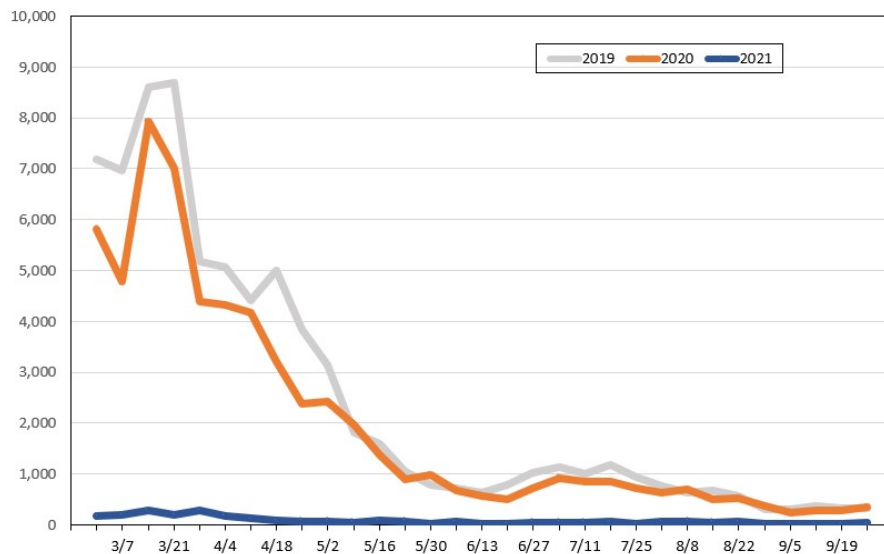
Source: Global Agency Pro, as of February 17, 2021

Travel Agency Weekly Bookings for Future Travel to Hawai'i as of February 17, 2021
Japan



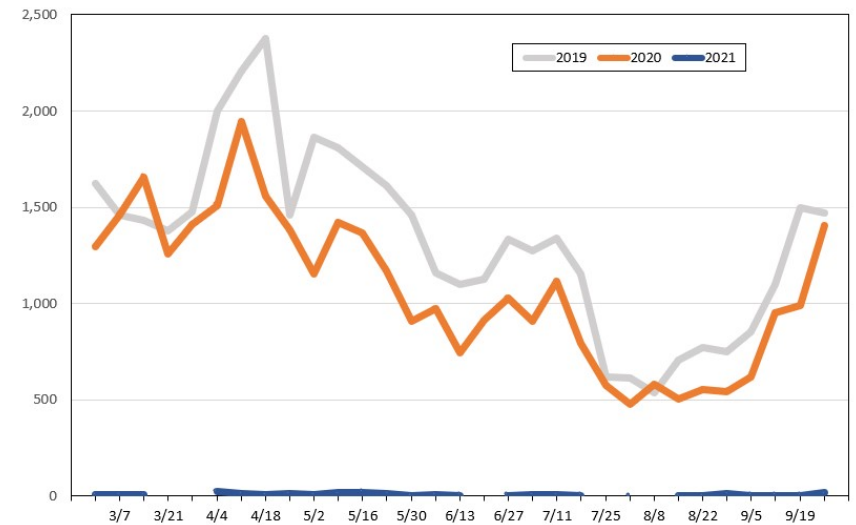
Source: Global Agency Pro, as of February 17, 2021

Travel Agency Weekly Bookings for Future Travel to Hawai'i as of February 17, 2021
Canada



Source: Global Agency Pro, as of February 17, 2021

Travel Agency Weekly Bookings for Future Travel to Hawai'i as of February 17, 2021
Australia



Source: Global Agency Pro, as of February 17, 2021