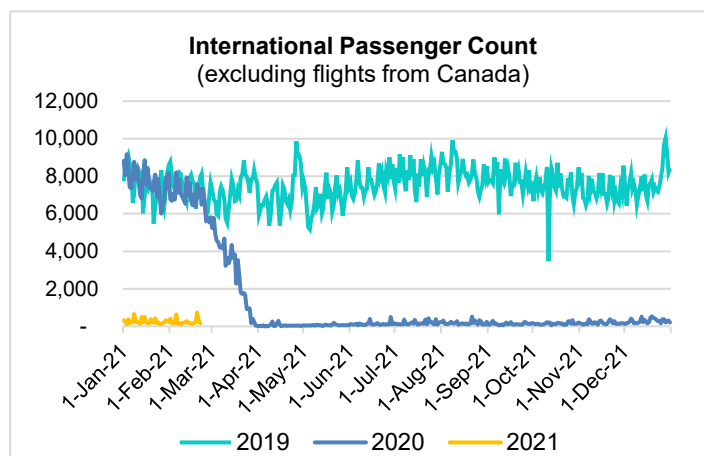
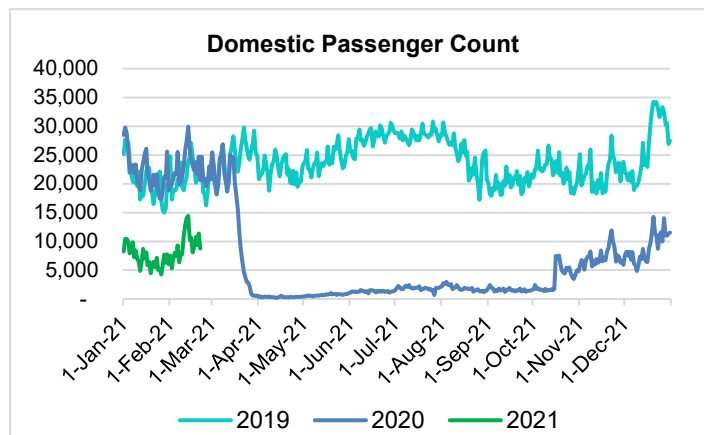
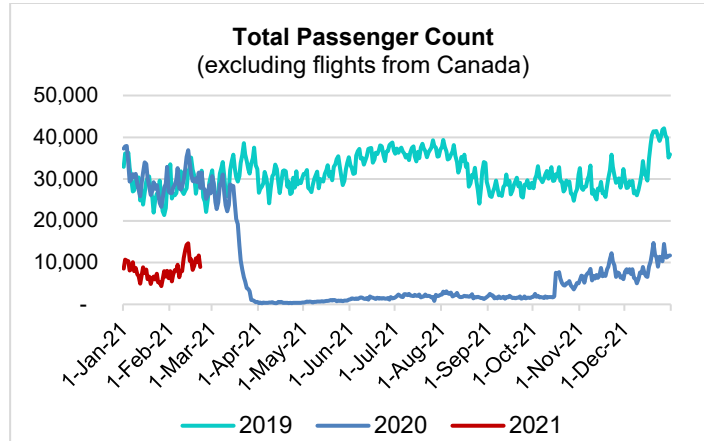


HTA COVID-19 UPDATE

(Issued: 2/22/21 @ 4:30pm)

Reason for Trip by Arrival Airport - Transpacific Screened Passengers as of 02/21/21	Honolulu (HNL)	Kahului (OGG)	Kona (KOA)	Lihue (LIH)	Grand Total
Airline Crew	426	220	113	18	777
Connecting Flight (Transit)	294	12	2	1	309
Corporate Meeting	14	11	0	2	27
Essential Worker	177	49	22	16	264
Honeymoon	14	15	4	0	33
Incentive Trip	0	16	0	0	16
Intended Resident	79	15	8	6	108
Military or Federal Government	133	2	1	0	136
Other	31	14	7	0	52
Other Business	110	43	24	2	179
Pleasure/Vacation	2,065	2,520	891	58	5,534
Returning Resident	1,059	153	155	14	1,381
Sports Event	0	0	1	0	1
To Attend School	7	1	0	0	8
To Get Married	4	3	1	2	10
Visiting Friends or Relatives	551	163	159	25	898
Grand Total	4,964	3,237	1,388	144	9,733

Source: Safe Travels program developed by the State of Hawaii Office of Enterprise Technology Services
Note: The data is preliminary and subject to change



Daily Passenger Count Table

02/21/2021	Domestic	International	Total
Oahu	4592	157	4749
Maui	2855		2855
Island of Hawaii	1209		1209
Kauai	119		119
State	8775	157	8932

Novel Coronavirus in Hawaii

COVID-19 Positive Cases

Cumulative totals as of 12:00pm on February 22, 2021

Total Confirmed Cases	27,223* (52 new)
Hawaii	2,234
Kauai	181
Lanai	108
Maui	2054†
Molokai	27
Oahu	21,806
Out of State	817
Pending	0
Required Hospitalization	1834‡
Hawaii Deaths	431
Cases in the past 14 days	683*

Footnotes for COVID-19 Cases

*As a result of updated information, two cases on Oahu and one case on Maui were removed from the counts.

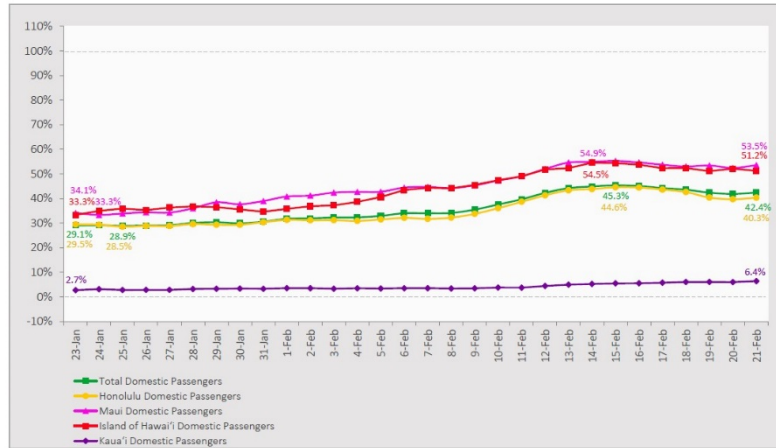
**Using cases reported in the past 14 days provides a rough approximation of the number of cases currently meeting criteria for isolation. This proxy number for "active cases" resolves classification issues for cases unable to be reached or who are out of jurisdiction, for whom precise release from isolation date may not be possible to determine. It is also not influenced by lags in data entry. (This total does not include Hawaii residents diagnosed outside of Hawaii)

†One case is a Lanai resident whose exposure is on Maui Island and who will be remaining on Maui Island for the interim.

‡Includes Hawaii residents hospitalized out of state.

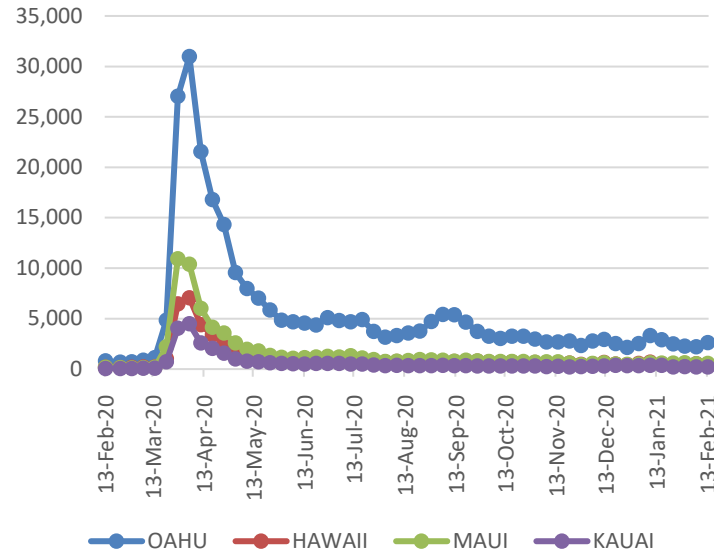
7-Day Domestic by Island Moving Average Daily Passenger Volume

2021 Volume as Percentage of 2020 Volume
Through February 21, 2021



Source: HVCB analysis based on data from DBEDT
Note: Passenger volume figures include both visitors and residents.

2021 Initial Weekly Unemployment Claims by Island



News Highlights

February 22, 2021

Honolulu Star Advertiser: [Older people are taking advantage of a different early-bird special by hitting the road after their vaccinations](#)

Hawaii News Now: [Hotel workers aren't yet eligible for COVID vaccines in Hawaii. Should they be?](#)

KHON2: [Kauai business owners say resort bubble extension is a huge blow for economy](#)

Honolulu Civil Beat: [Hawaii Plans For Post-Pandemic Tourism, Starting With Kauai](#)

The Garden Island: [Vaccines for kupuna 75 and over readily available](#)

The Maui News: [Visitor arrested, voluntarily leaves](#)

West Hawaii Today: [Testing for those arriving on Big Island will continue](#)

Travel Pulse: [US Extends Land Border Closure With Canada, Mexico Again](#)

Fox Business: [Travel's COVID-19 blues are likely here to stay — 'people will go out of business'](#)

Domestic by Island Month-to-Date and Year-to-Date Daily Passenger Volume

2021 Volume versus 2020 Volume
Through February 21, 2021

February 2021 (Month-to-Date through February 21)

	2021	2020	Volume Change	Percent Change
Honolulu	100,802	258,154	-157,352	-61.0%
Maui County	64,236	124,682	-60,446	-48.5%
Island of Hawai'i	30,003	59,901	-29,898	-49.9%
Kaua'i	2,053	40,936	-38,883	-95.0%
Total	197,094	483,673	-286,579	-59.3%

2021 (Year-to-Date through February 21)

	2021	2020	Volume Change	Percent Change
Honolulu	225,572	642,980	-417,408	-64.9%
Maui County	126,972	296,154	-169,182	-57.1%
Island of Hawai'i	59,924	143,765	-83,841	-58.3%
Kaua'i	3,890	99,067	-95,177	-96.1%
Total	416,358	1,181,966	-765,608	-64.8%

Source: HVCB analysis based on data from DBEDT
Note: Passenger volume figures include both visitors and residents. Total includes other international passengers.

Weekly Unemployment Initial Claims: February 13, 2021

State of Hawaii	3,907
C&C of Oahu	2,626
Honolulu	1,052
Kaneohe	316
Waipahu	1,258
Hawaii County	429
Hilo	249
Kona	180
Maui County	538
Wailuku	522
Molokai	16
Kauai County	196
Agent (filed in Hawaii against another state)	118

Helpful Resources

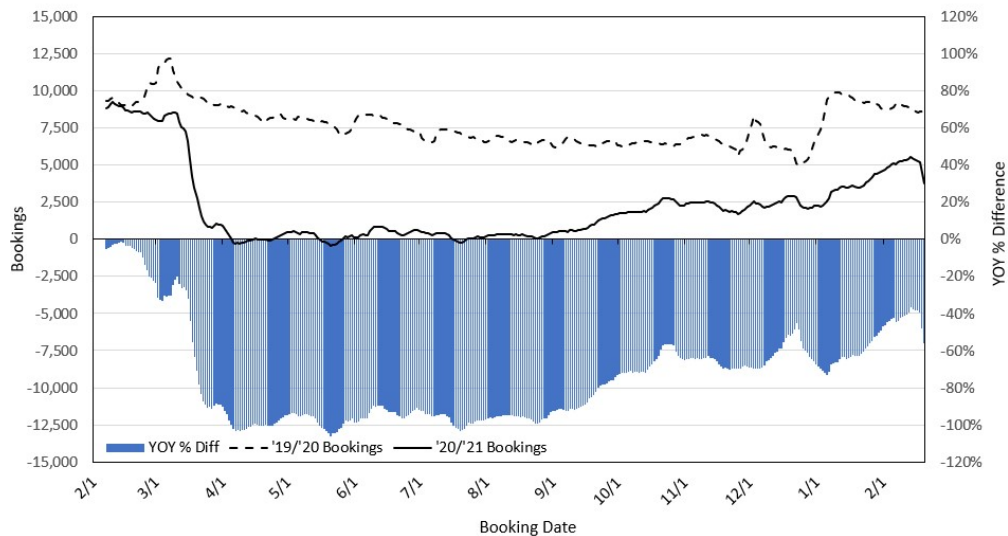
Department of Health
<https://hawaiiicovid19.com/>

Hawaii Tourism Authority
<https://www.hawaiitourismauthority.org/covid-19-updates/>

Dept. of Business, Economic Development & Tourism
<https://dbedt.hawaii.gov/economic/covid19/>

Department of Transportation
<https://hidot.hawaii.gov/coronavirus/>

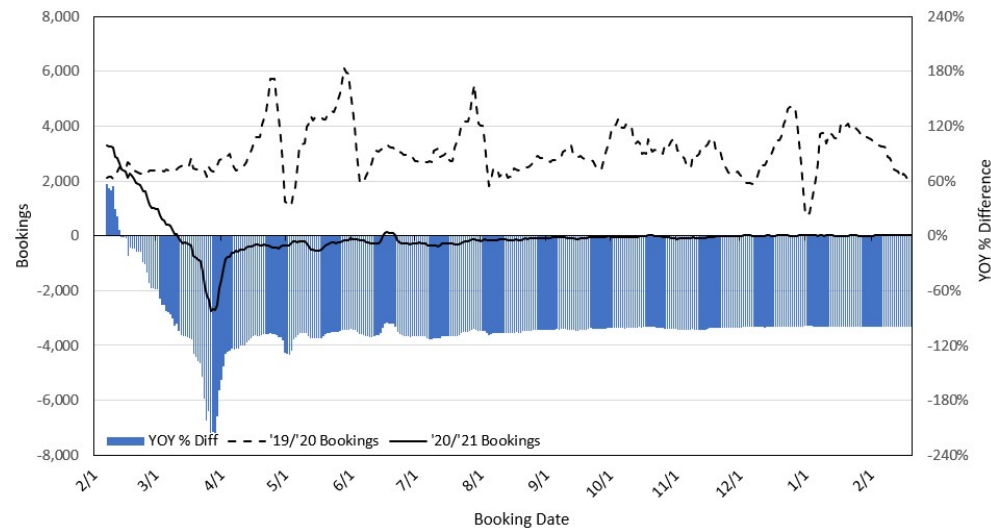
Travel Agency Bookings to Hawaii for Future Arrivals* Based on a 7-day Moving Average as of February 20, 2021 U.S.



*Future Arrivals refers to all arrivals that are 'future' relative to the referenced booking date.
Source: Global Agency Pro

Update: Feb 20, 2021

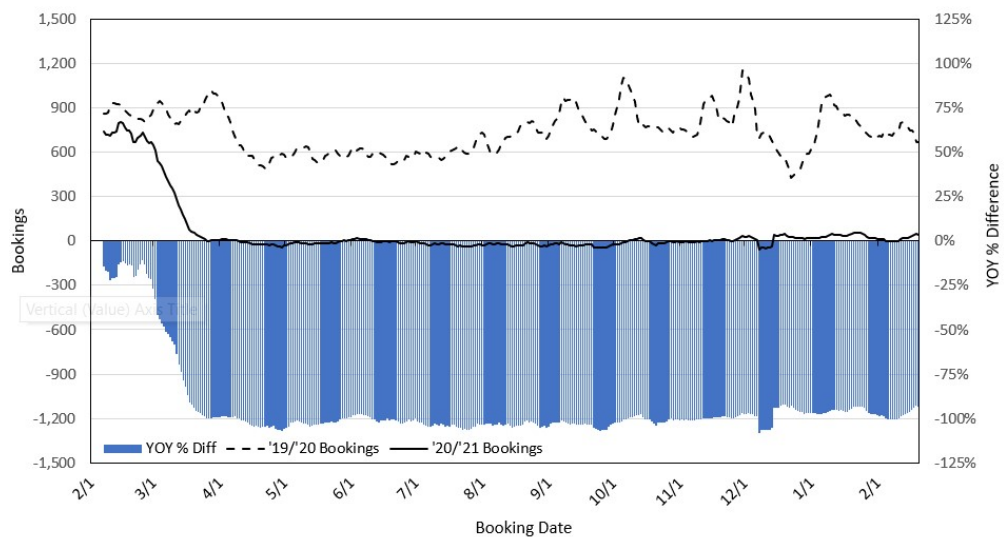
Travel Agency Bookings to Hawaii for Future Arrivals* Based on a 7-day Moving Average as of February 20, 2021 Japan



*Future Arrivals refers to all arrivals that are 'future' relative to the referenced booking date.
Source: Global Agency Pro

Update: Feb 20, 2021

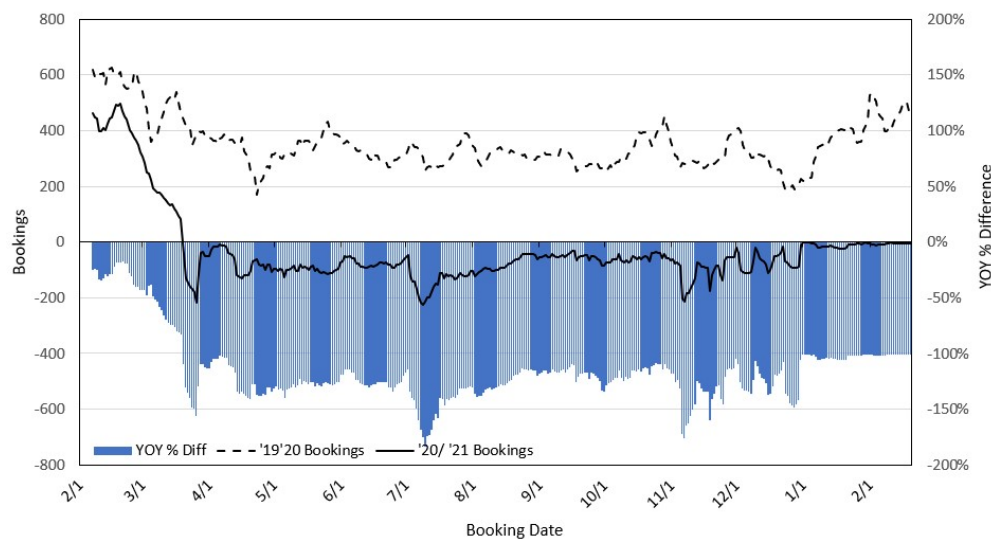
Travel Agency Bookings to Hawaii for Future Arrivals* Based on a 7-day Moving Average as of February 20, 2021 Canada



*Future Arrivals refers to all arrivals that are 'future' relative to the referenced booking date.
Source: Global Agency Pro

Update: Feb 20, 2021

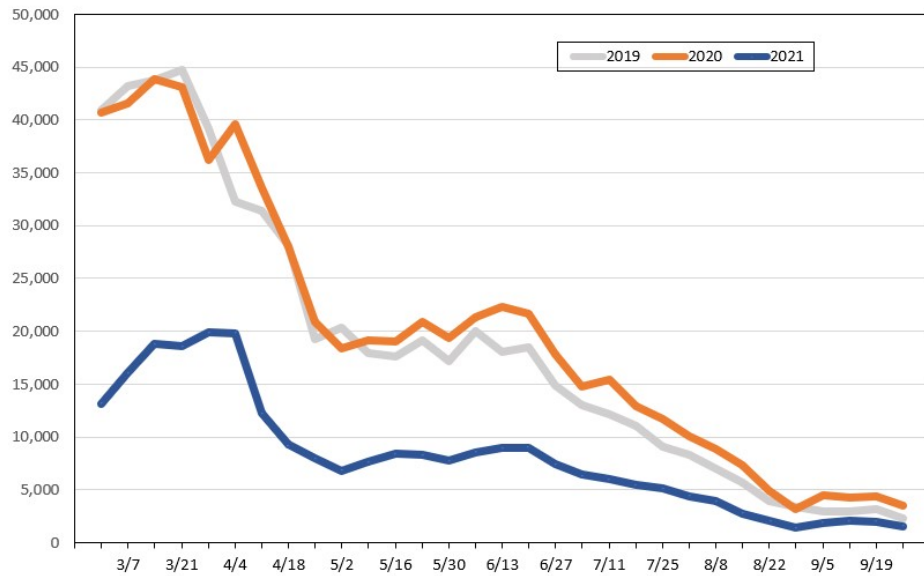
Travel Agency Bookings to Hawaii for Future Arrivals* Based on a 7-day Moving Average as of February 20, 2021 Australia



*Future Arrivals refers to all arrivals that are 'future' relative to the referenced booking date.
Source: Global Agency Pro

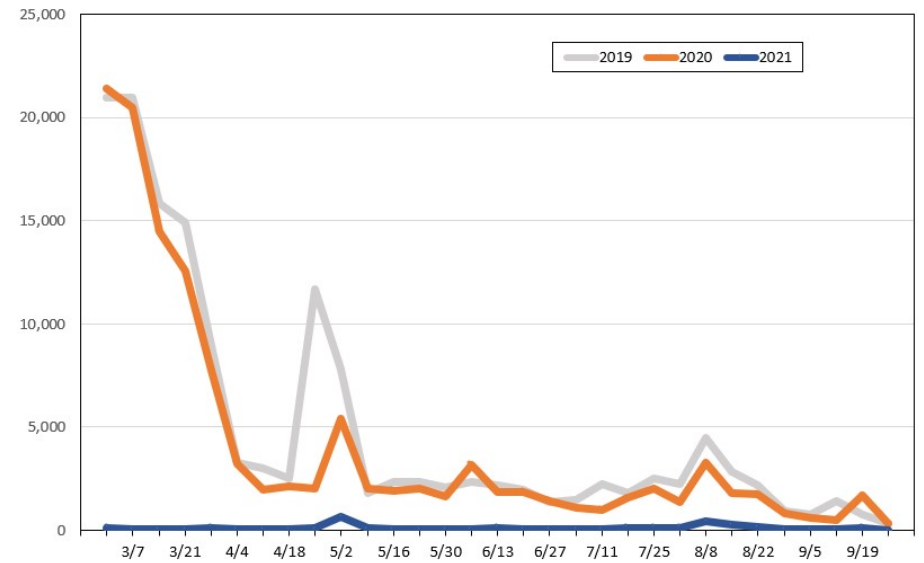
Update: Feb 20, 2021

Travel Agency Weekly Bookings for Future Travel to Hawai'i as of February 20, 2021
U.S.



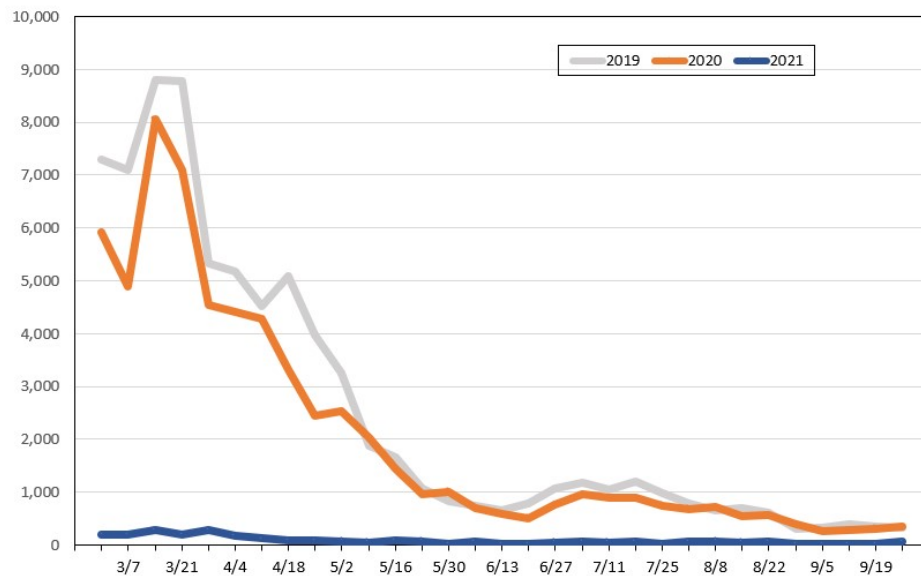
Source: Global Agency Pro, as of February 20, 2021

Travel Agency Weekly Bookings for Future Travel to Hawai'i as of February 20, 2021
Japan



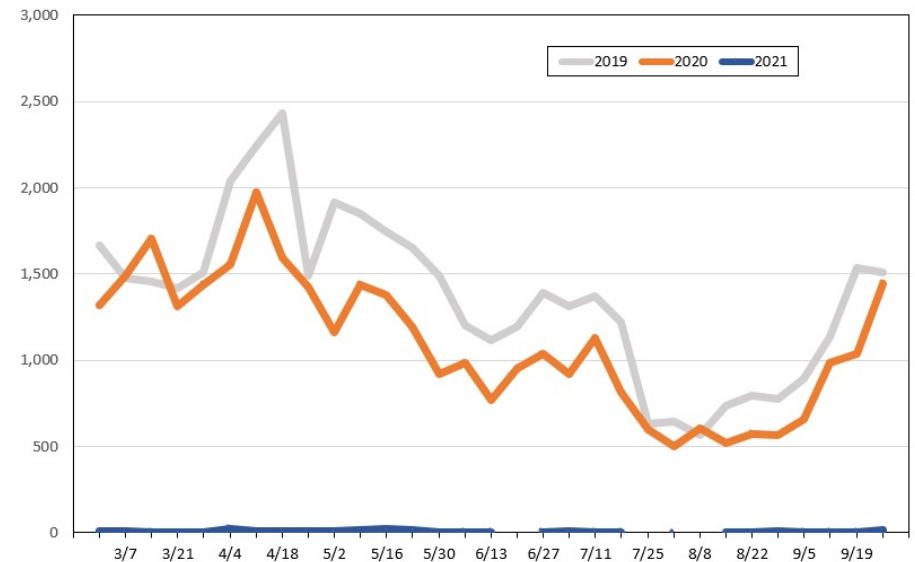
Source: Global Agency Pro, as of February 20, 2021

Travel Agency Weekly Bookings for Future Travel to Hawai'i as of February 20, 2021
Canada



Source: Global Agency Pro, as of February 20, 2021

Travel Agency Weekly Bookings for Future Travel to Hawai'i as of February 20, 2021
Australia



Source: Global Agency Pro, as of February 20, 2021