

HTA COVID-19 UPDATE

(Issued: 2/23/21 @ 4:30pm)

Reason for Trip by Arrival Airport - Transpacific Screened Passengers as of 02/22/21	Honolulu (HNL)	Kahului (OGG)	Kona (KOA)	Lihue (LIH)	Grand Total
Airline Crew	444	209	113	11	777
Connecting Flight (Transit)	339	28	0	0	367
Corporate Meeting	11	25	0	0	36
Essential Worker	134	21	19	6	180
Honeymoon	17	17	3	0	37
Incentive Trip	2	57	0	0	59
Intended Resident	112	17	20	1	150
Military or Federal Government	127	3	2	3	135
Other	42	7	10	2	61
Other Business	83	43	19	3	148
Pleasure/Vacation	2,221	2,285	831	42	5,379
Returning Resident	1,222	227	133	16	1,598
Sports Event	5	1	1	0	7
To Attend School	8	0	2	0	10
To Get Married	3	6	5	0	14
Transit	1	0	0	0	1
Visiting Friends or Relatives	724	249	184	24	1,181
Grand Total	5,495	3,195	1,342	108	10,140

Source: Safe Travels program developed by the State of Hawaii Office of Enterprise Technology Services

Note: The data is preliminary and subject to change

Novel Coronavirus in Hawaii

COVID-19 Positive Cases

Cumulative totals as of 12:00pm on February 23, 2021

Total Confirmed Cases	27,270* (47 new)
Hawaii	2,234
Kauai	181
Lanai	108
Maui	2071†
Molokai	27
Oahu	21,829
Out of State	820
Pending	0
Required Hospitalization	1840‡
Hawaii Deaths	431
Cases in the past 14 days	693*

Footnotes for COVID-19 Cases

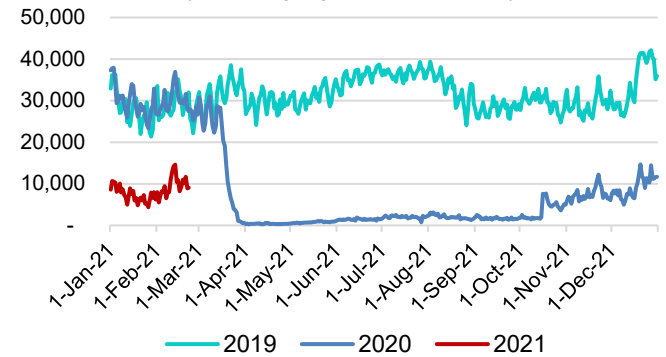
*As a result of updated information, two cases on Oahu and one case on Maui were removed from the counts.

**Using cases reported in the past 14 days provides a rough approximation of the number of cases currently meeting criteria for isolation. This proxy number for "active cases" resolves classification issues for cases unable to be reached or who are out of jurisdiction, for whom precise release from isolation date may not be possible to determine. It is also not influenced by lags in data entry. (This total does not include Hawaii residents diagnosed outside of Hawaii)

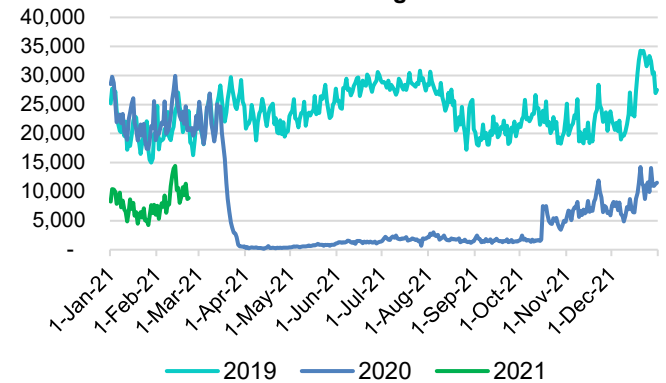
†One case is a Lanai resident whose exposure is on Maui Island and who will be remaining on Maui Island for the interim.

‡Includes Hawaii residents hospitalized out of state.

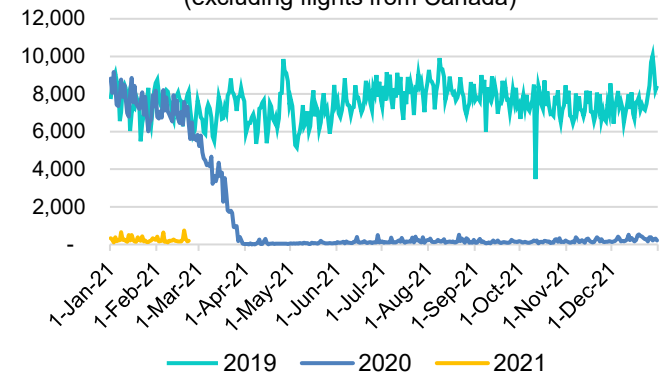
Total Passenger Count (excluding flights from Canada)



Domestic Passenger Count



International Passenger Count (excluding flights from Canada)

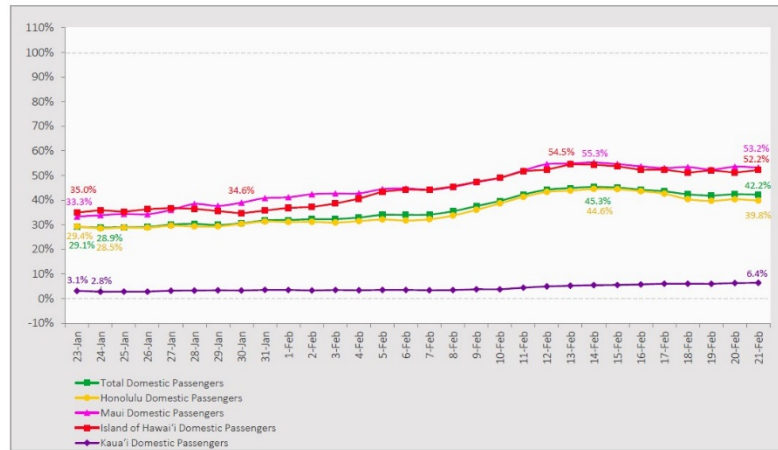


Daily Passenger Count Table

02/22/2021	Domestic	International	Total
Oahu	4785	194	4979
Maui	2810		2810
Island of Hawaii	1186		1186
Kauai	83		83
State	8864	194	9058

7-Day Domestic by Island Moving Average Daily Passenger Volume

2021 Volume as Percentage of 2020 Volume
Through February 22, 2021



Source: HVCB analysis based on data from DBEDT
Note: Passenger volume figures include both visitors and residents.

Domestic by Island Month-to-Date and Year-to-Date Daily Passenger Volume

2021 Volume versus 2020 Volume
Through February 22, 2021

February 2021 (Month-to-Date through February 22)

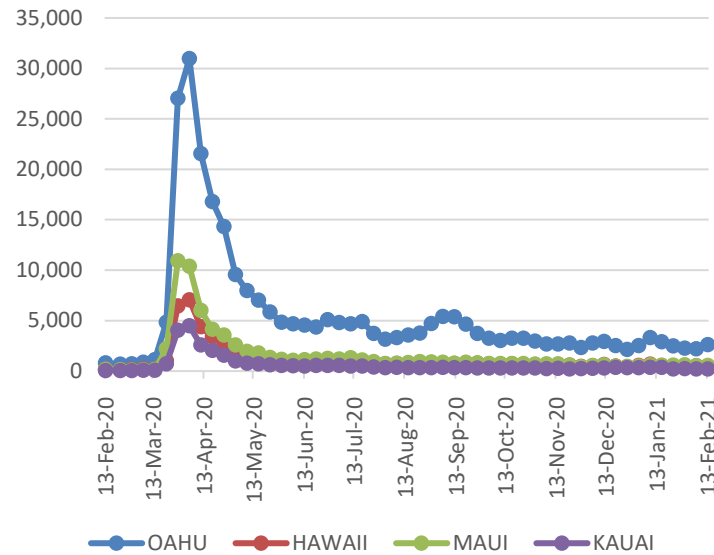
	2021	2020	Volume Change	Percent Change
Honolulu	105,587	270,581	-164,994	-61.0%
Maui County	67,046	131,478	-64,432	-49.0%
Island of Hawai'i	31,176	63,143	-31,967	-50.6%
Kaua'i	2,124	43,182	-41,058	-95.1%
Total	205,933	508,384	-302,451	-59.5%

2021 (Year-to-Date through February 22)

	2021	2020	Volume Change	Percent Change
Honolulu	230,357	655,407	-425,050	-64.9%
Maui County	129,782	302,950	-173,168	-57.2%
Island of Hawai'i	61,097	147,007	-85,910	-58.4%
Kaua'i	3,961	101,313	-97,352	-96.1%
Total	425,197	1,206,677	-781,480	-64.8%

Source: HVCB analysis based on data from DBEDT
Note: Passenger volume figures include both visitors and residents. Total includes other international passengers.

2021 Initial Weekly Unemployment Claims by Island



Weekly Unemployment Initial Claims: February 13, 2021

State of Hawaii	3,907
C&C of Oahu	2,626
Honolulu	1,052
Kaneohe	316
Waipahu	1,258
Hawaii County	429
Hilo	249
Kona	180
Maui County	538
Wailuku	522
Molokai	16
Kauai County	196
Agent (filed in Hawaii against another state)	118

News Highlights

February 23, 2021

Honolulu Star Advertiser:

[Retailers seek rent relief as coronavirus pandemic wears on](#)

Hawaii News Now: [Scenes of unmasked tourists in large groups stir frustration, anger among locals](#)

KHON2: [Hawaii Quarantine Kapu Breakers say mask wearing an issue in tourist areas](#)

Hawaii Tribune-Herald: [Hotel occupancy rates plummet by 60% from January 2020](#)

The Maui News: [Businesses navigate mask exemptions](#)

Hawaii Tribune-Herald: [Health director: Vaccinations for ages 70-74 could be offered in 3 weeks; wait might be longer on Big Isle](#)

Fox40: [Vacaville woman and friend arrested in Hawaii for violating COVID-19 travel rules](#)

New York Post: [Tourists accused of breaking Hawaii COVID rules by pretending to be locals](#)

Travel Weekly: [CDC says hotel workers should be prioritized for vaccinations](#)

Helpful Resources

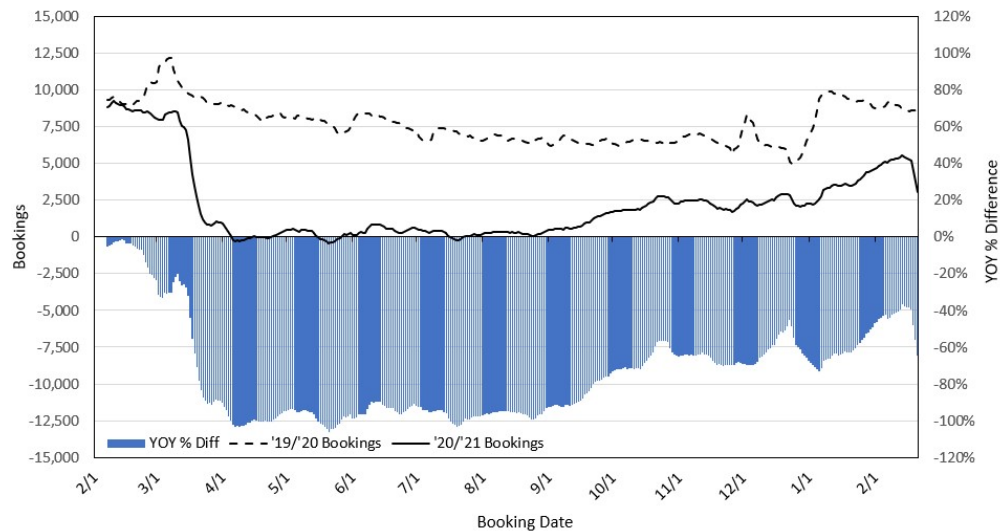
Department of Health
<https://hawaiiicovid19.com/>

Hawaii Tourism Authority
<https://www.hawaiitourismauthority.org/covid-19-updates/>

Dept. of Business, Economic Development & Tourism
<https://dbedt.hawaii.gov/economic/covid19/>

Department of Transportation
<https://hidot.hawaii.gov/coronavirus/>

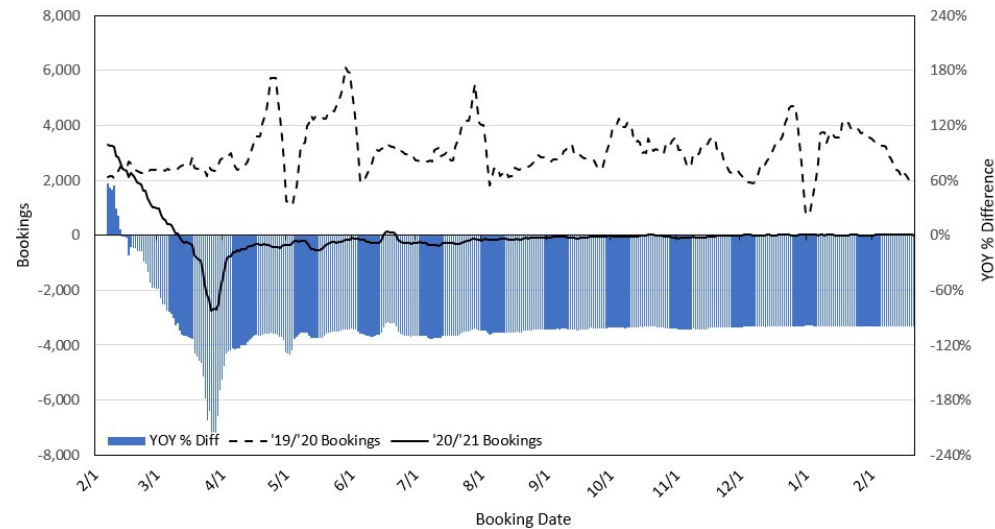
Travel Agency Bookings to Hawaii for Future Arrivals* Based on a 7-day Moving Average as of February 21, 2021 U.S.



*Future Arrivals refers to all arrivals that are 'future' relative to the referenced booking date.
Source: Global Agency Pro

Update: Feb 21, 2021

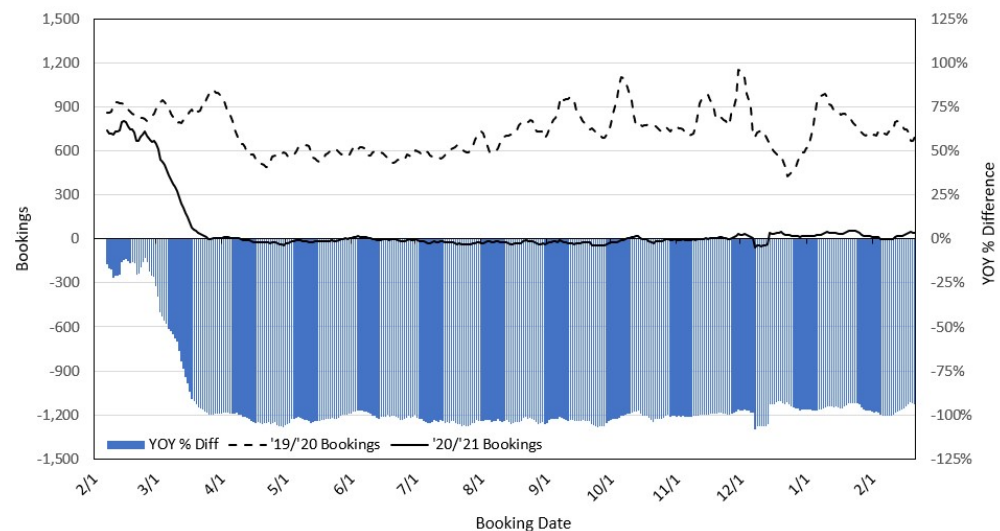
Travel Agency Bookings to Hawaii for Future Arrivals* Based on a 7-day Moving Average as of February 21, 2021 Japan



*Future Arrivals refers to all arrivals that are 'future' relative to the referenced booking date.
Source: Global Agency Pro

Update: Feb 21, 2021

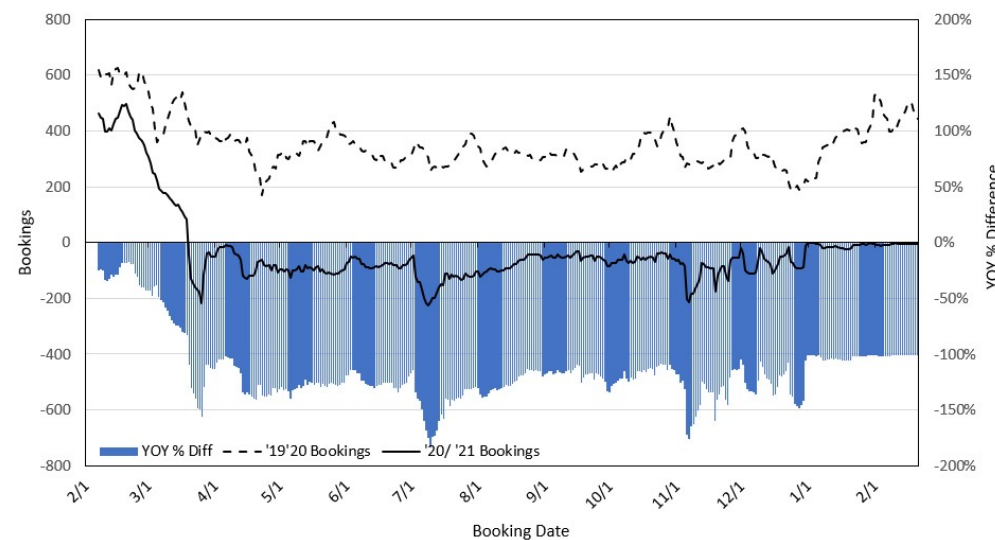
Travel Agency Bookings to Hawaii for Future Arrivals* Based on a 7-day Moving Average as of February 21, 2021 Canada



*Future Arrivals refers to all arrivals that are 'future' relative to the referenced booking date.
Source: Global Agency Pro

Update: Feb 21, 2021

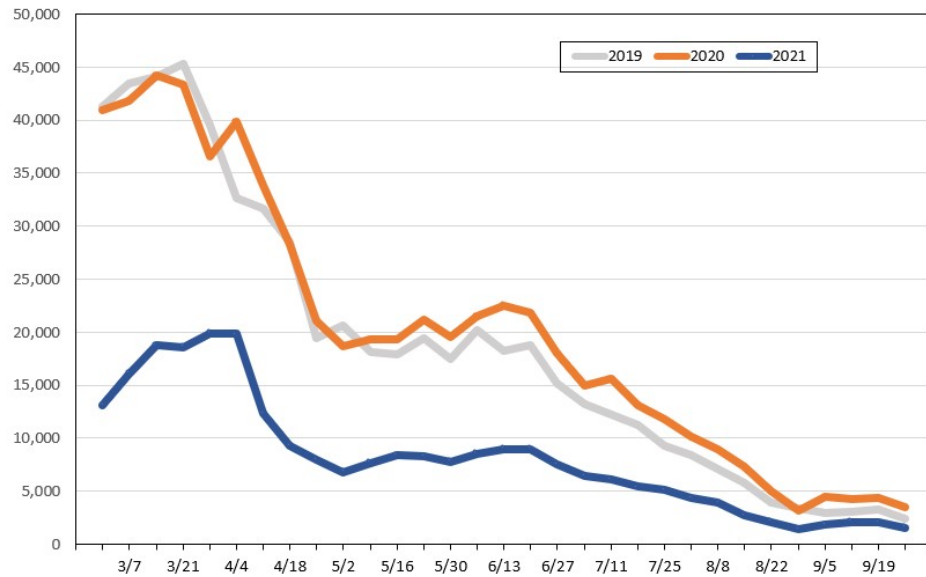
Travel Agency Bookings to Hawaii for Future Arrivals* Based on a 7-day Moving Average as of February 21, 2021 Australia



*Future Arrivals refers to all arrivals that are 'future' relative to the referenced booking date.
Source: Global Agency Pro

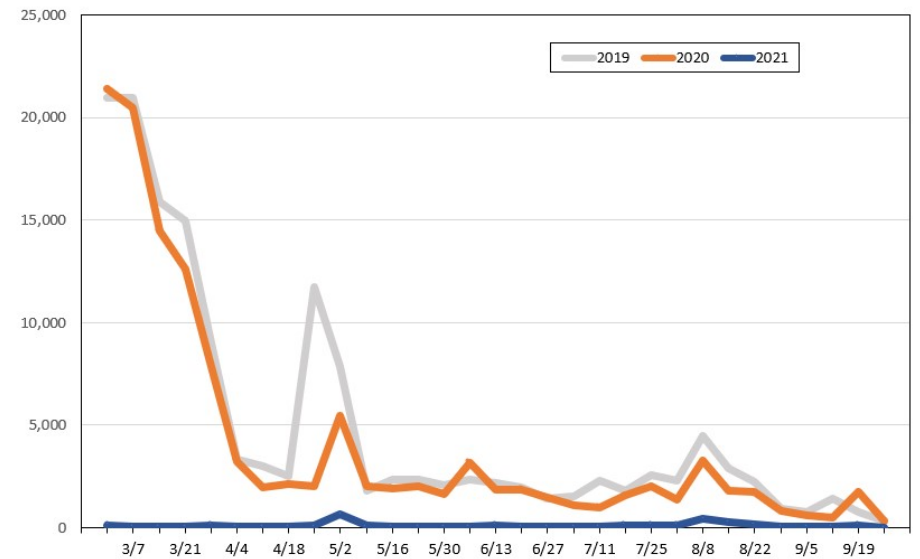
Update: Feb 21, 2021

Travel Agency Weekly Bookings for Future Travel to Hawai'i as of February 21, 2021
U.S.



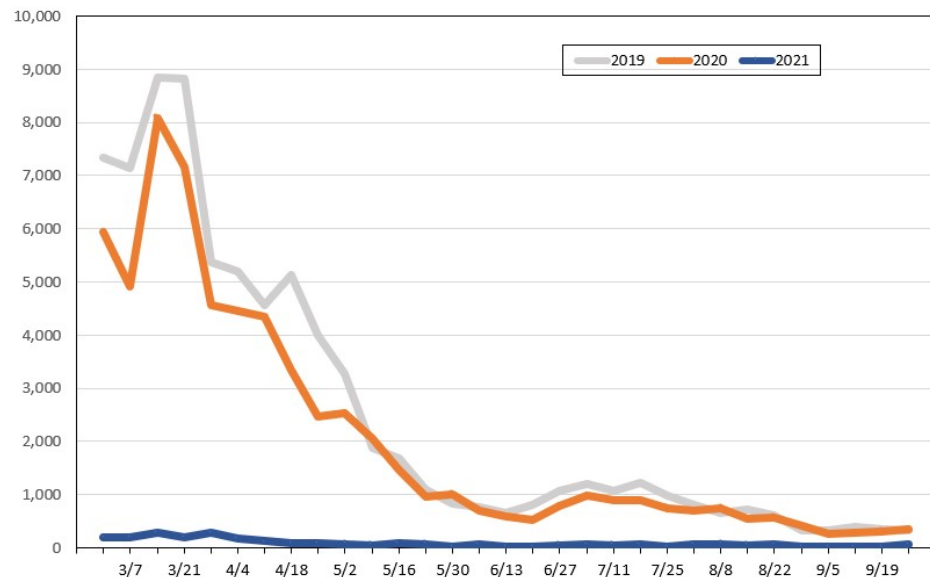
Source: Global Agency Pro, as of February 21, 2021

Travel Agency Weekly Bookings for Future Travel to Hawai'i as of February 21, 2021
Japan



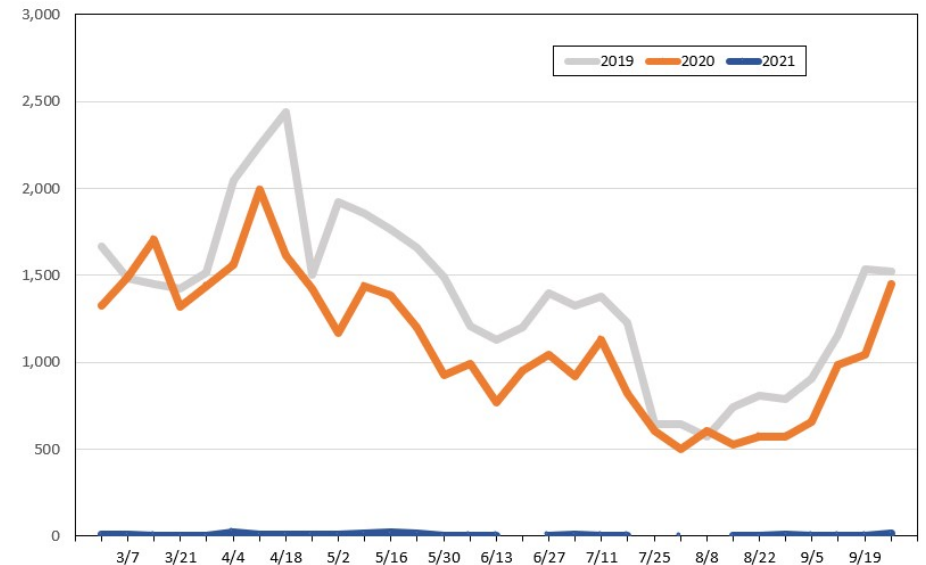
Source: Global Agency Pro, as of February 21, 2021

Travel Agency Weekly Bookings for Future Travel to Hawai'i as of February 21, 2021
Canada



Source: Global Agency Pro, as of February 21, 2021

Travel Agency Weekly Bookings for Future Travel to Hawai'i as of February 21, 2021
Australia



Source: Global Agency Pro, as of February 21, 2021