

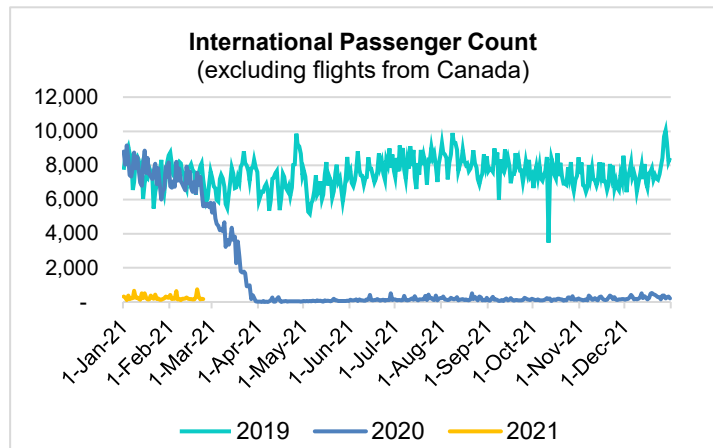
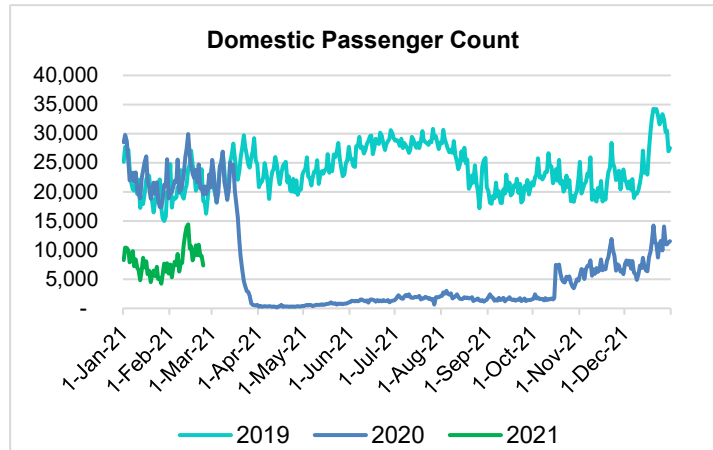
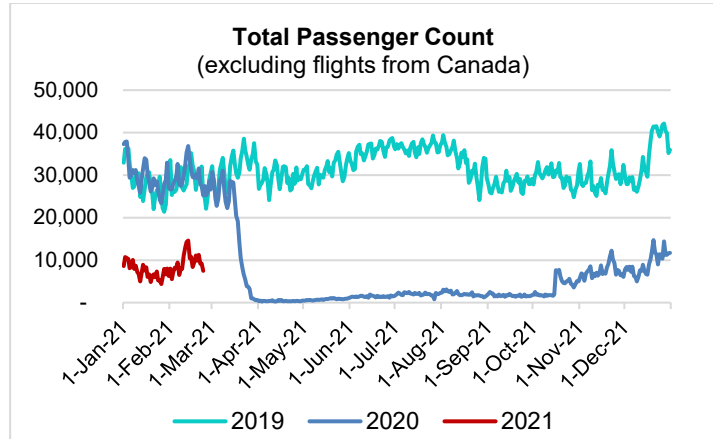
HTA COVID-19 UPDATE

(Issued: 2/24/21 @ 4:30pm)

Reason for Trip by Arrival Airport - Transpacific Screened Passengers as of 02/23/21	Honolulu (HNL)	Kahului (OGG)	Kona (KOA)	Lihue (LIH)	Grand Total
Airline Crew	422	190	105	18	735
Connecting Flight (Transit)	261	8	2	2	273
Corporate Meeting	1	7	0	0	8
Essential Worker	108	17	19	3	147
Honeymoon	7	12	0	0	19
Incentive Trip	0	1	0	0	1
Intended Resident	52	16	20	1	89
Military or Federal Government	96	0	0	0	96
Other	45	4	11	2	62
Other Business	66	21	14	4	105
Pleasure/Vacation	1,818	1,911	796	38	4,563
Returning Resident	1,023	140	93	15	1,271
Sports Event	2	0	2	0	4
To Attend School	13	1	0	0	14
To Get Married	4	4	0	0	8
Visiting Friends or Relatives	622	173	181	23	999
Grand Total	4,540	2,505	1,243	106	8,394

Source: Safe Travels program developed by the State of Hawaii Office of Enterprise Technology Services

Note: The data is preliminary and subject to change



Daily Passenger Count Table

02/23/2021	Domestic	International	Total
Oahu	4017	168	4185
Maui	2192		2192
Island of Hawaii	1079		1079
Kauai	62		62
State	7350	168	7518

Novel Coronavirus in Hawaii

COVID-19 Positive Cases

Cumulative totals as of 12:00pm on February 24, 2021

Total Confirmed Cases	27,320* (50 new)
Hawaii	2,236
Kauai	182
Lanai	108
Maui	2095†
Molokai	27
Oahu	21,845
Out of State	827
Pending	0
Required Hospitalization	1848‡
Hawaii Deaths	435
Cases in the past 14 days	684*

Footnotes for COVID-19 Cases

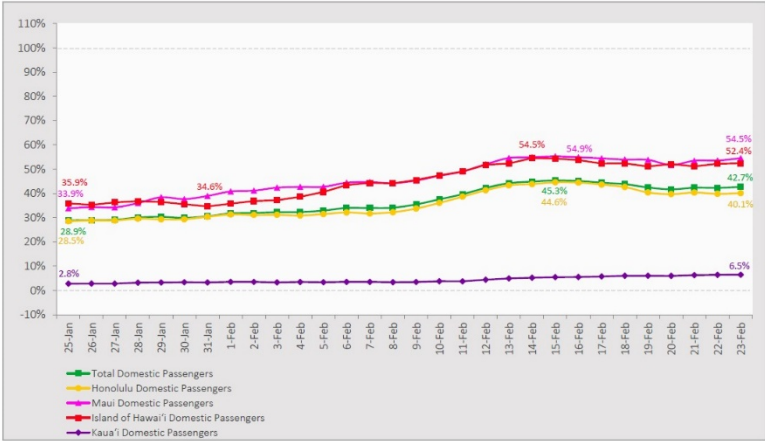
*

**Using cases reported in the past 14 days provides a rough approximation of the number of cases currently meeting criteria for isolation. This proxy number for "active cases" resolves classification issues for cases unable to be reached or who are out of jurisdiction, for whom precise release from isolation date may not be possible to determine. It is also not influenced by lags in data entry. (This total does not include Hawaii residents diagnosed outside of Hawaii)

†One case is a Lanai resident whose exposure is on Maui Island and who will be remaining on Maui Island for the interim.

‡Includes Hawaii residents hospitalized out of state.

7-Day Domestic by Island Moving Average Daily Passenger Volume
2021 Volume as Percentage of 2020 Volume
Through February 23, 2021



Source: HVCB analysis based on data from DBEDT.
Note: Passenger volume figures include both visitors and residents.

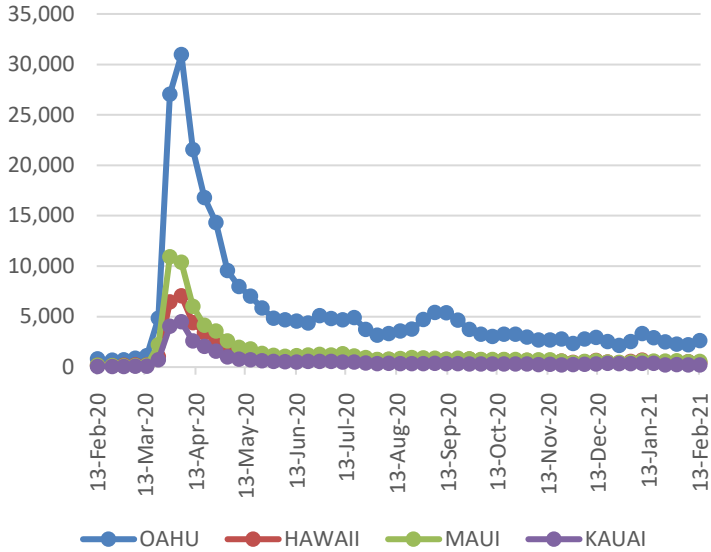
Domestic by Island Month-to-Date and Year-to-Date Daily Passenger Volume
2021 Volume versus 2020 Volume
Through February 23, 2021

February 2021 (Month-to-Date through February 23)				
	2021	2020	Volume Change	Percent Change
Honolulu	109,604	282,456	-172,852	-61.2%
Maui County	69,368	136,466	-67,098	-49.2%
Island of Hawai'i	32,255	65,438	-33,183	-50.7%
Kaua'i	2,186	44,595	-42,409	-95.1%
Total	213,413	528,955	-315,542	-59.7%

2021 (Year-to-Date through February 23)				
	2021	2020	Volume Change	Percent Change
Honolulu	234,374	667,282	-432,908	-64.9%
Maui County	132,104	307,938	-175,834	-57.1%
Island of Hawai'i	62,176	149,302	-87,126	-58.4%
Kaua'i	4,023	102,726	-98,703	-96.1%
Total	432,677	1,227,248	-794,571	-64.7%

Source: HVCB analysis based on data from DBEDT.
Note: Passenger volume figures include both visitors and residents. Total includes other international passengers.

2021 Initial Weekly Unemployment Claims by Island



Weekly Unemployment Initial Claims: February 13, 2021

State of Hawaii	3,907
C&C of Oahu	2,626
Honolulu	1,052
Kaneohe	316
Waipahu	1,258
Hawaii County	429
Hilo	249
Kona	180
Maui County	538
Wailuku	522
Molokai	16
Kauai County	196
Agent (filed in Hawaii against another state)	118

News Highlights

February 24, 2021

KHON2: [Safe travels quarantine violators say Hawaii takes rules very seriously](#)

Pacific Business News: [Honolulu receives approval from Ige to move to Tier 3 in coronavirus recovery](#)

Honolulu Magazine: [Honolulu Slated to Move Into Tier 3 with Bigger Gatherings Starting February 25](#)

Hawaii Public Radio: [Vaccination Hesitation: Community Health Centers Get Creative to Engage the Community](#)

West Hawaii Today: [Hotel occupancy remains down amid pandemic](#)

The Mercury News: [Covid-19 U.S. travel restrictions state by state](#)

Travel Pulse: [COVID-19 Vaccine Rollouts Continue to Fuel Travelers' Optimism](#)

eTurbo News: [Hawaii hotels remain severely impacted by COVID-19](#)

Forbes: [Hawaii Is Rethinking Its Post-Pandemic Approach To Tourism](#)

Helpful Resources

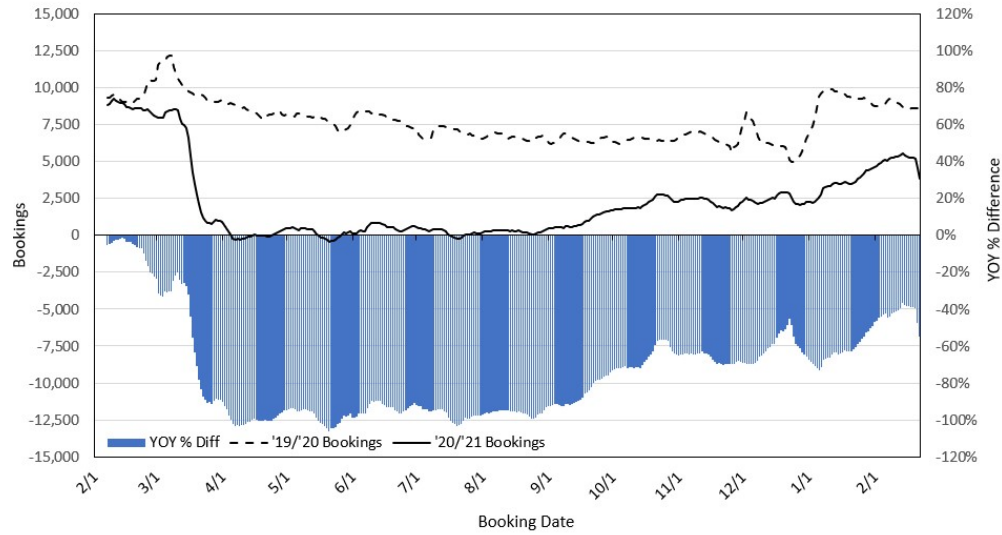
Department of Health
<https://hawaiiicovid19.com/>

Hawaii Tourism Authority
<https://www.hawaiitourismauthority.org/covid-19-updates/>

Dept. of Business, Economic Development & Tourism
<https://dbedt.hawaii.gov/economic/covid19/>

Department of Transportation
<https://hidot.hawaii.gov/coronavirus/>

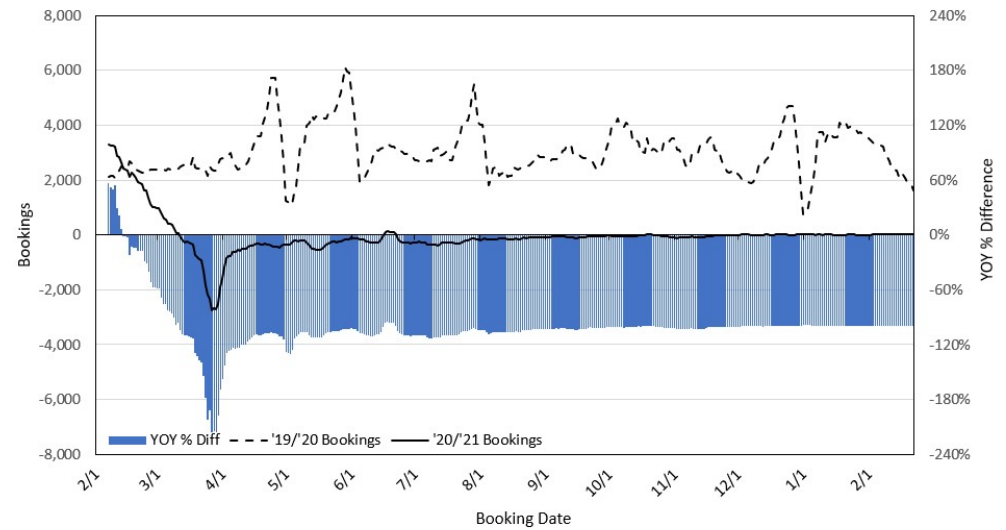
Travel Agency Bookings to Hawaii for Future Arrivals* Based on a 7-day Moving Average as of February 22, 2021 U.S.



*Future Arrivals refers to all arrivals that are 'future' relative to the referenced booking date.
Source: Global Agency Pro

Update: Feb 22, 2021

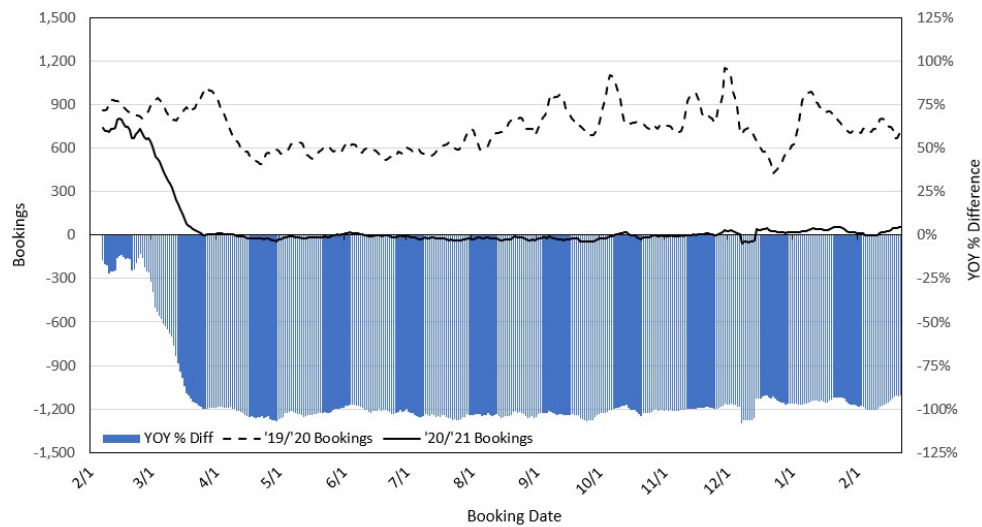
Travel Agency Bookings to Hawaii for Future Arrivals* Based on a 7-day Moving Average as of February 22, 2021 Japan



*Future Arrivals refers to all arrivals that are 'future' relative to the referenced booking date.
Source: Global Agency Pro

Update: Feb 22, 2021

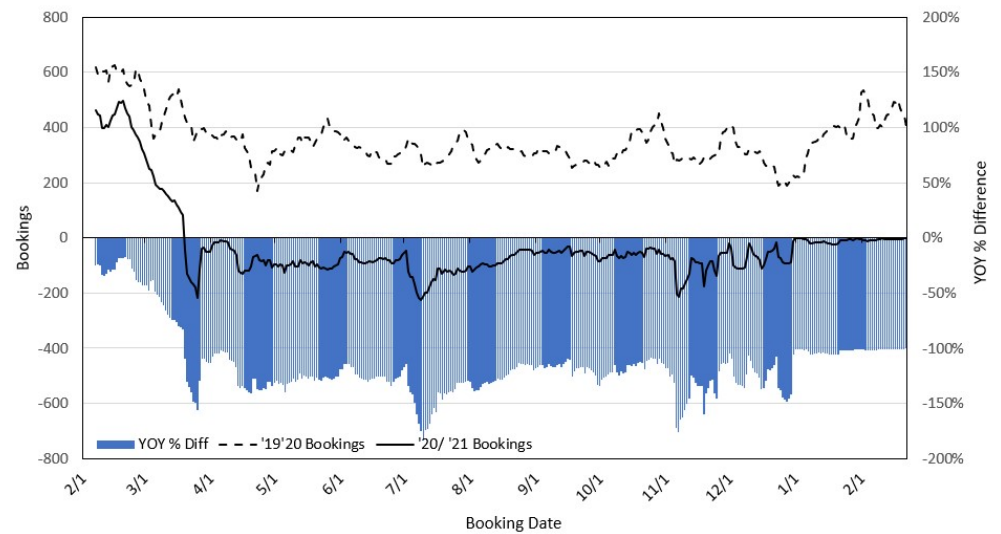
Travel Agency Bookings to Hawaii for Future Arrivals* Based on a 7-day Moving Average as of February 22, 2021 Canada



*Future Arrivals refers to all arrivals that are 'future' relative to the referenced booking date.
Source: Global Agency Pro

Update: Feb 22, 2021

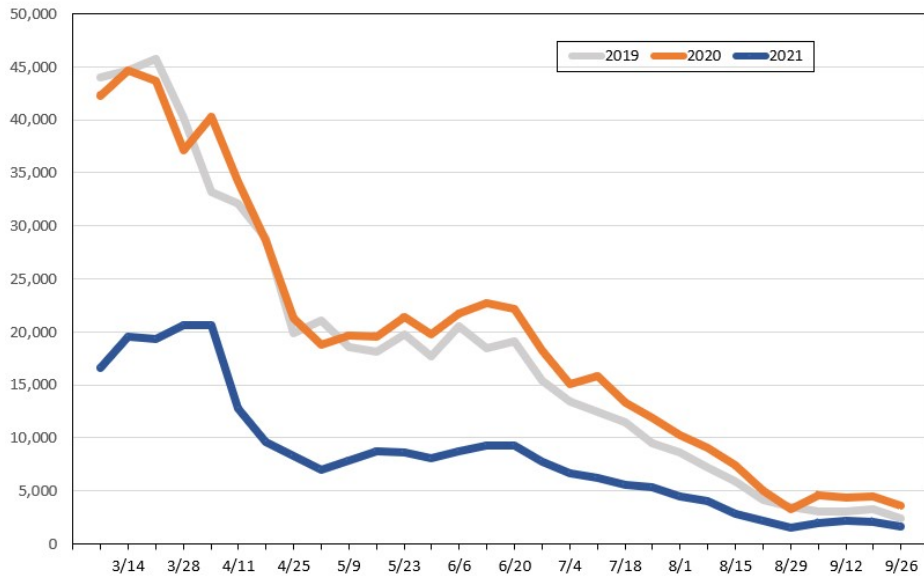
Travel Agency Bookings to Hawaii for Future Arrivals* Based on a 7-day Moving Average as of February 22, 2021 Australia



*Future Arrivals refers to all arrivals that are 'future' relative to the referenced booking date.
Source: Global Agency Pro

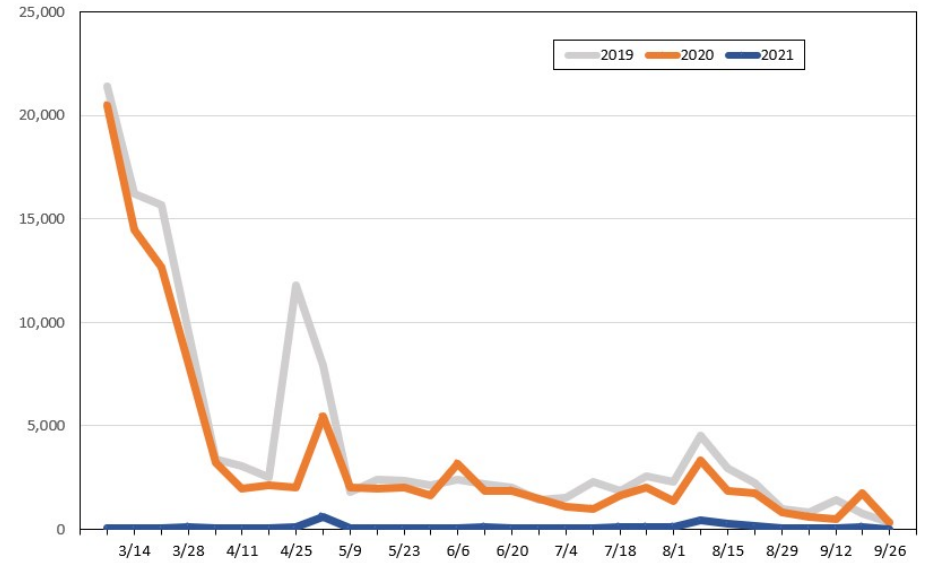
Update: Feb 22, 2021

Travel Agency Weekly Bookings for Future Travel to Hawai'i as of February 22, 2021
U.S.



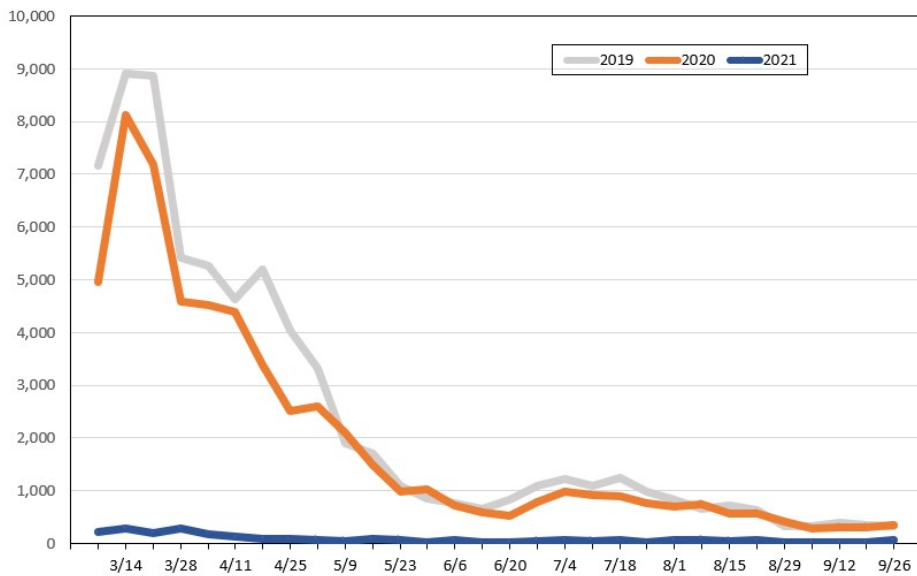
Source: Global Agency Pro, as of February 22, 2021

Travel Agency Weekly Bookings for Future Travel to Hawai'i as of February 22, 2021
Japan



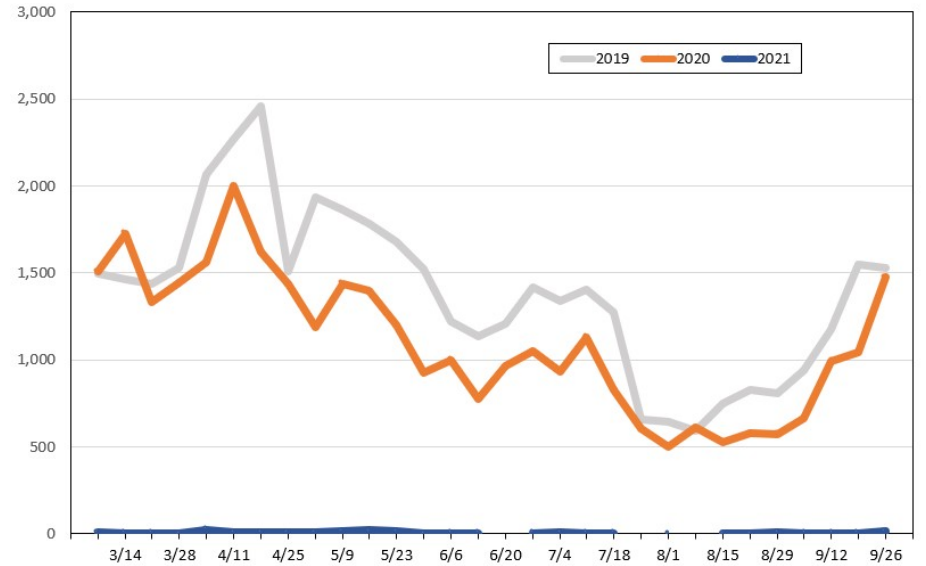
Source: Global Agency Pro, as of February 22, 2021

Travel Agency Weekly Bookings for Future Travel to Hawai'i as of February 22, 2021
Canada



Source: Global Agency Pro, as of February 22, 2021

Travel Agency Weekly Bookings for Future Travel to Hawai'i as of February 22, 2021
Australia



Source: Global Agency Pro, as of February 22, 2021