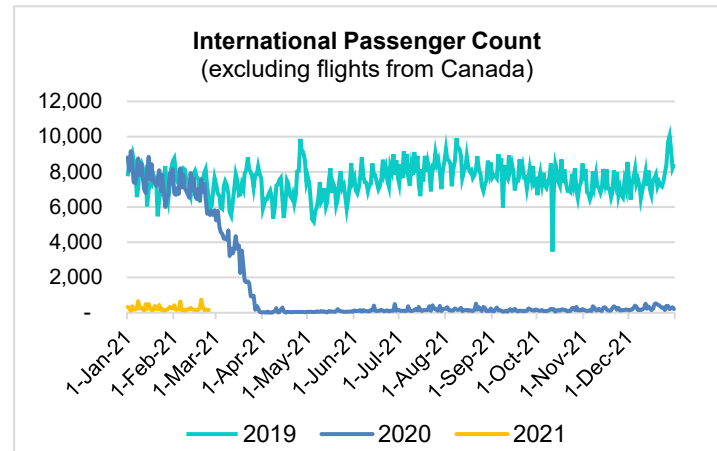
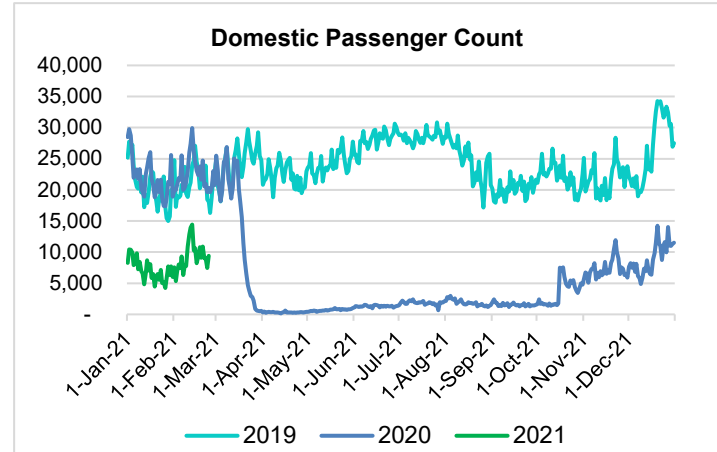
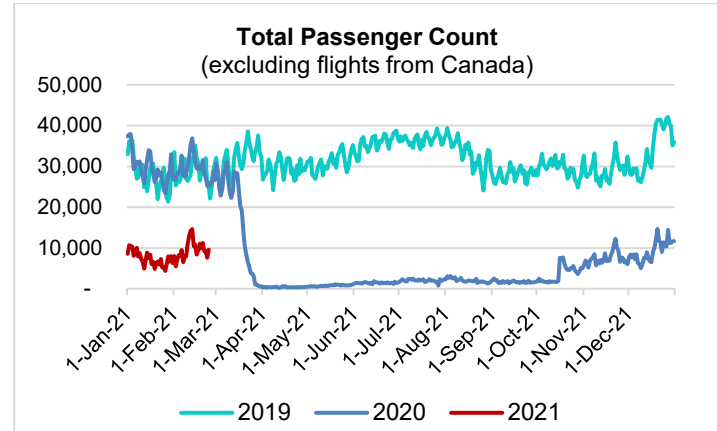


HTA COVID-19 UPDATE

(Issued: 2/25/21 @ 4:30pm)

Reason for Trip by Arrival Airport - Transpacific Screened Passengers as of 02/24/21	Honolulu (HNL)	Kahului (OGG)	Kona (KOA)	Lihue (LIH)	Grand Total
Airline Crew	428	180	111	18	737
Connecting Flight (Transit)	325	22	0	1	348
Corporate Meeting	3	6	0	0	9
Essential Worker	79	33	10	4	126
Honeymoon	6	11	2	0	19
Incentive Trip	1	0	0	0	1
Intended Resident	90	19	10	6	125
Military or Federal Government	70	0	1	1	72
Other	63	23	11	0	97
Other Business	59	36	22	4	121
Pleasure/Vacation	2,716	2,613	936	44	6,309
Returning Resident	860	179	94	17	1,150
To Attend School	11	1	0	0	12
To Get Married	2	0	0	0	2
Visiting Friends or Relatives	920	278	229	6	1,433
Grand Total	5,633	3,401	1,426	101	10,561

Source: Safe Travels program developed by the State of Hawaii Office of Enterprise Technology Services
Note: The data is preliminary and subject to change



Daily Passenger Count Table

02/24/2021	Domestic	International	Total
Oahu	5045	154	5199
Maui	3039		3039
Island of Hawaii	1249		1249
Kauai	78		78
State	9411	154	9565

Novel Coronavirus in Hawaii

COVID-19 Positive Cases

Cumulative totals as of 12:00pm on February 25, 2021

Total Confirmed Cases	27,358* (45 new)
Hawaii	2,237
Kauai	182
Lanai	108
Maui	2106†
Molokai	27
Oahu	21,869
Out of State	829
Pending	0
Required Hospitalization	1858‡
Hawaii Deaths	435
Cases in the past 14 days	634*

Footnotes for COVID-19 Cases

* As a result of updated information, 7 cases on Maui were removed from the counts.

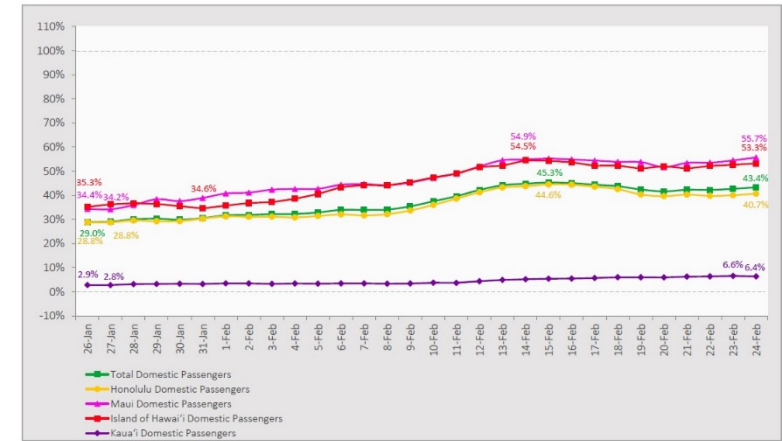
**Using cases reported in the past 14 days provides a rough approximation of the number of cases currently meeting criteria for isolation. This proxy number for "active cases" resolves classification issues for cases unable to be reached or who are out of jurisdiction, for whom precise release from isolation date may not be possible to determine. It is also not influenced by lags in data entry. (This total does not include Hawaii residents diagnosed outside of Hawaii).

†One case is a Lanai resident whose exposure is on Maui Island and who will be remaining on Maui Island for the interim.

‡Includes Hawaii residents hospitalized out of state.

7-Day Domestic by Island Moving Average Daily Passenger Volume

2021 Volume as Percentage of 2020 Volume
Through February 24, 2021



Source: HVCB analysis based on data from DBEDT
Note: Passenger volume figures include both visitors and residents.

Domestic by Island Month-to-Date and Year-to-Date Daily Passenger Volume

2021 Volume versus 2020 Volume
Through February 24, 2021

February 2021 (Month-to-Date through February 24)

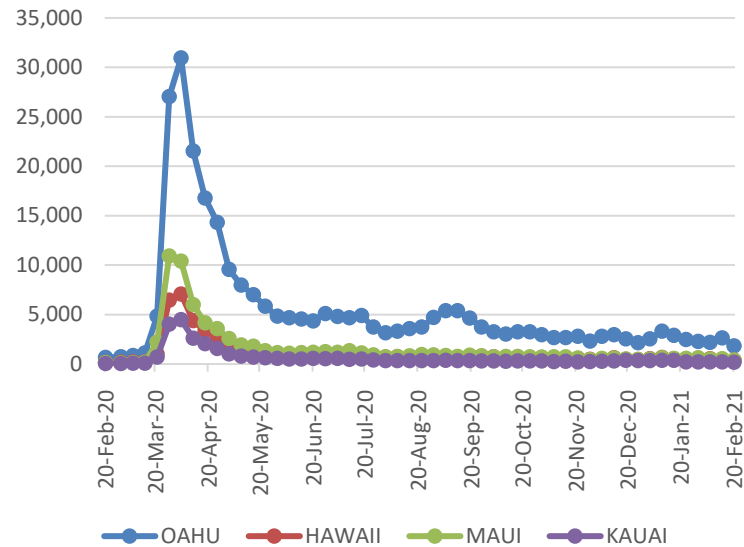
	2021	2020	Volume Change	Percent Change
Honolulu	114,649	294,100	-179,451	-61.0%
Maui County	72,407	141,815	-69,408	-48.9%
Island of Hawai'i	33,564	67,846	-34,282	-50.5%
Kaua'i	2,281	46,142	-43,861	-95.1%
Total	222,901	549,903	-327,002	-59.5%

2021 (Year-to-Date through February 24)

	2021	2020	Volume Change	Percent Change
Honolulu	239,419	678,926	-439,507	-64.7%
Maui County	135,143	313,287	-178,144	-56.9%
Island of Hawai'i	63,485	151,710	-88,225	-58.2%
Kaua'i	4,118	104,273	-100,155	-96.1%
Total	442,165	1,248,196	-806,031	-64.6%

Source: HVCB analysis based on data from DBEDT
Note: Passenger volume figures include both visitors and residents. Total includes other international passengers.

2021 Initial Weekly Unemployment Claims by Island



Weekly Unemployment Initial Claims: February 20, 2021

State of Hawaii	2,891
C&C of Oahu	1,829
Honolulu	786
Kaneohe	185
Waipahu	858
Hawaii County	364
Hilo	198
Kona	166
Maui County	413
Wailuku	394
Molokai	19
Kauai County	173
Agent (filed in Hawaii against another state)	112

News Highlights

February 25, 2021

Honolulu Star Advertiser: [Maui County is Hawaii's new COVID-19 infection hot spot](#)

Pacific Business News: [Hawaii vacation rentals report losses in occupancy, supply and demand in January](#)

Hawaii Magazine: [Oahu Will See Fewer Restrictions Starting Thursday](#)

The Maui News: [Maui Health plans to ramp up vaccine appointments](#)

Hawaii Tribune-Herald: [FDA says single-dose shot from Johnson & Johnson prevents severe COVID](#)

Bloomberg: [Hawaii's Next Phase Is to See If Tourism Can Work for Locals, Too](#)

CNN: [Going maskless is a key factor in Covid-19 outbreaks at gyms, studies say](#)

ABC News: [Vaccine makers vow to get doses out faster](#)

The New York Times: [Two weeks in a hotel room: Air travelers share their quarantine experiences](#)

Helpful Resources

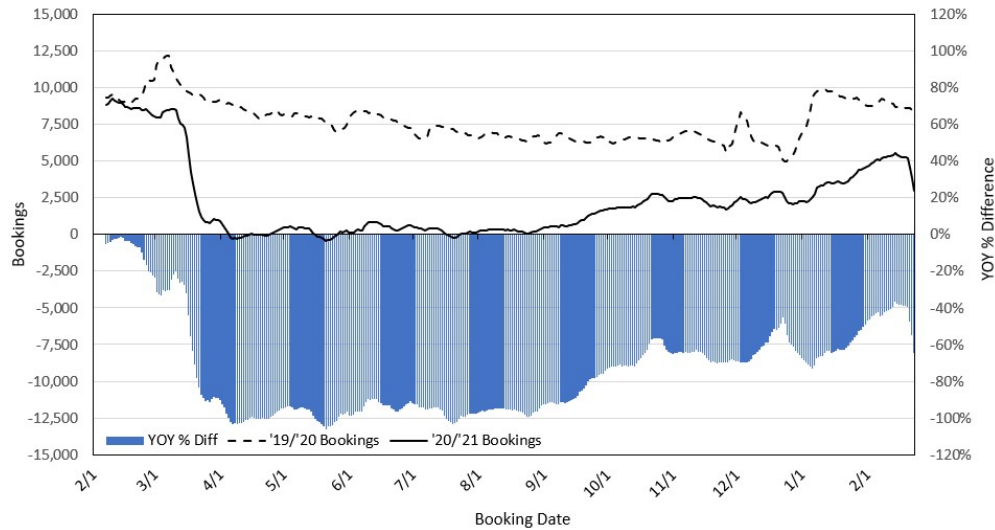
Department of Health
<https://hawaiiicovid19.com/>

Hawaii Tourism Authority
<https://www.hawaiitourismauthority.org/covid-19-updates/>

Dept. of Business, Economic Development & Tourism
<https://dbedt.hawaii.gov/economic/covid19/>

Department of Transportation
<https://hidot.hawaii.gov/coronavirus/>

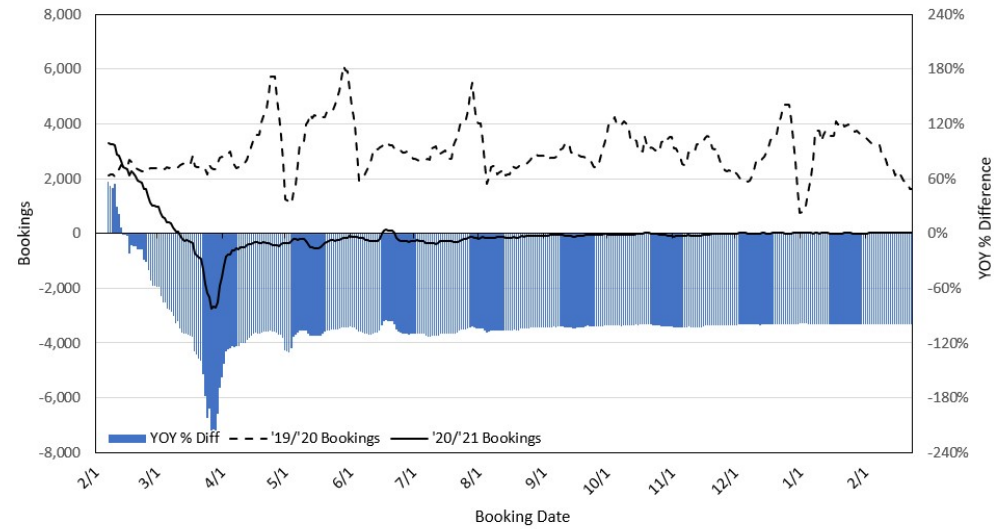
Travel Agency Bookings to Hawaii for Future Arrivals* Based on a 7-day Moving Average as of February 23, 2021 U.S.



*Future Arrivals refers to all arrivals that are 'future' relative to the referenced booking date.
Source: Global Agency Pro

Update: Feb 23, 2021

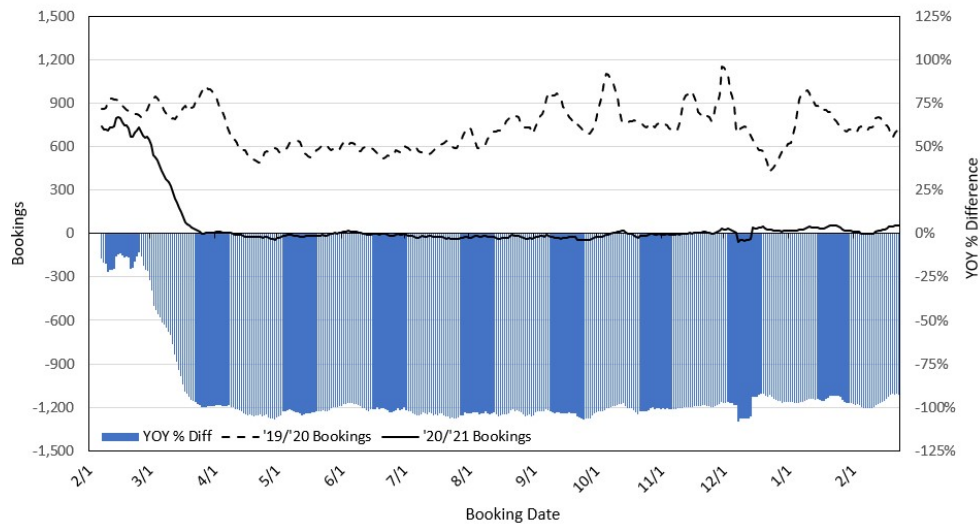
Travel Agency Bookings to Hawaii for Future Arrivals* Based on a 7-day Moving Average as of February 23, 2021 Japan



*Future Arrivals refers to all arrivals that are 'future' relative to the referenced booking date.
Source: Global Agency Pro

Update: Feb 23, 2021

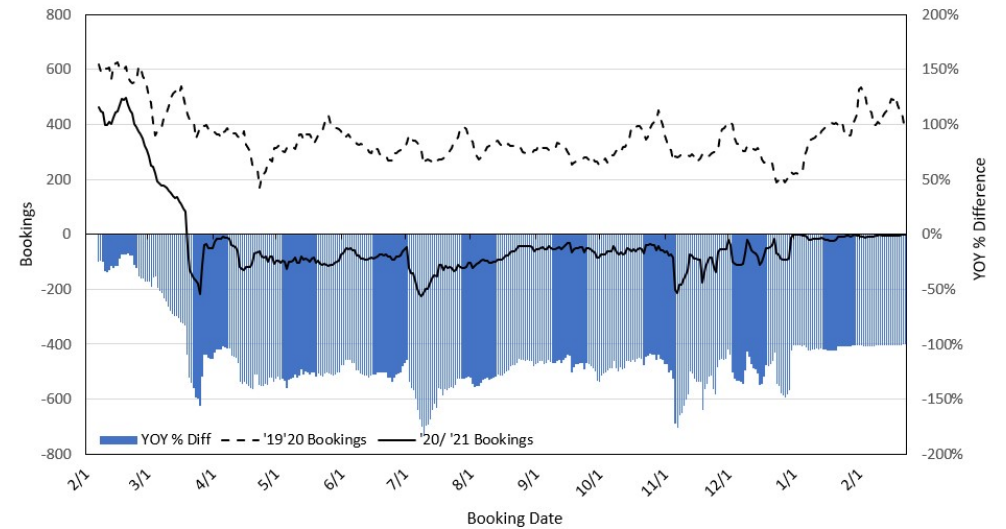
Travel Agency Bookings to Hawaii for Future Arrivals* Based on a 7-day Moving Average as of February 23, 2021 Canada



*Future Arrivals refers to all arrivals that are 'future' relative to the referenced booking date.
Source: Global Agency Pro

Update: Feb 23, 2021

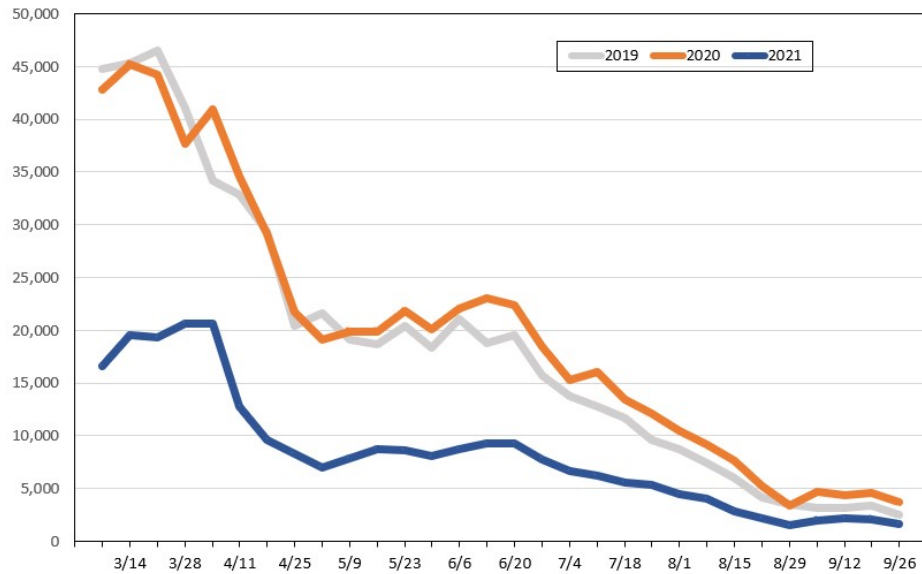
Travel Agency Bookings to Hawaii for Future Arrivals* Based on a 7-day Moving Average as of February 23, 2021 Australia



*Future Arrivals refers to all arrivals that are 'future' relative to the referenced booking date.
Source: Global Agency Pro

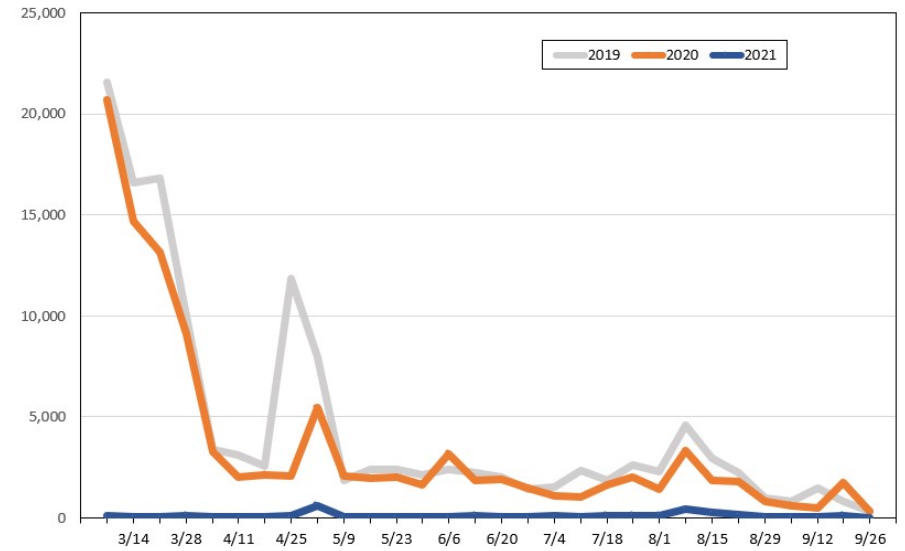
Update: Feb 23, 2021

Travel Agency Weekly Bookings for Future Travel to Hawai'i as of February 23, 2021
U.S.



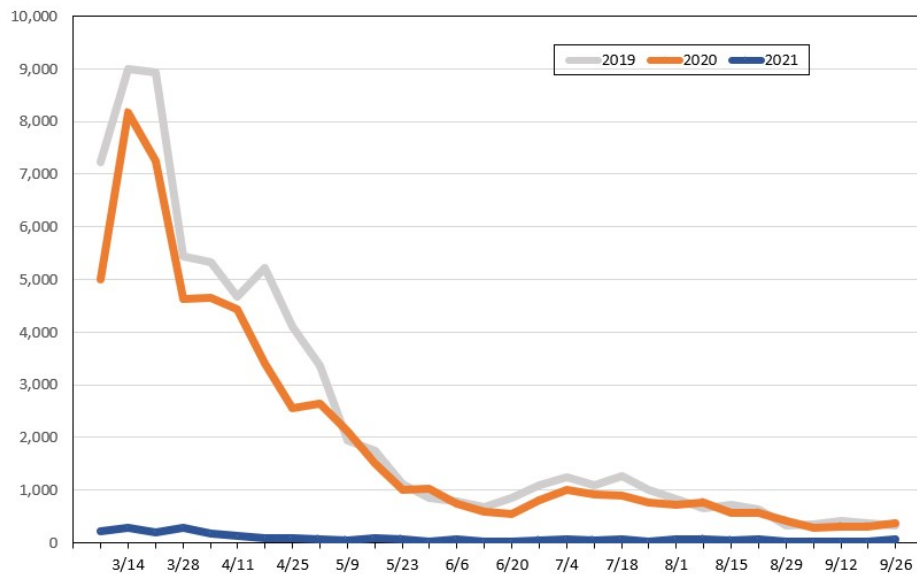
Source: Global Agency Pro, as of February 23, 2021

Travel Agency Weekly Bookings for Future Travel to Hawai'i as of February 23, 2021
Japan



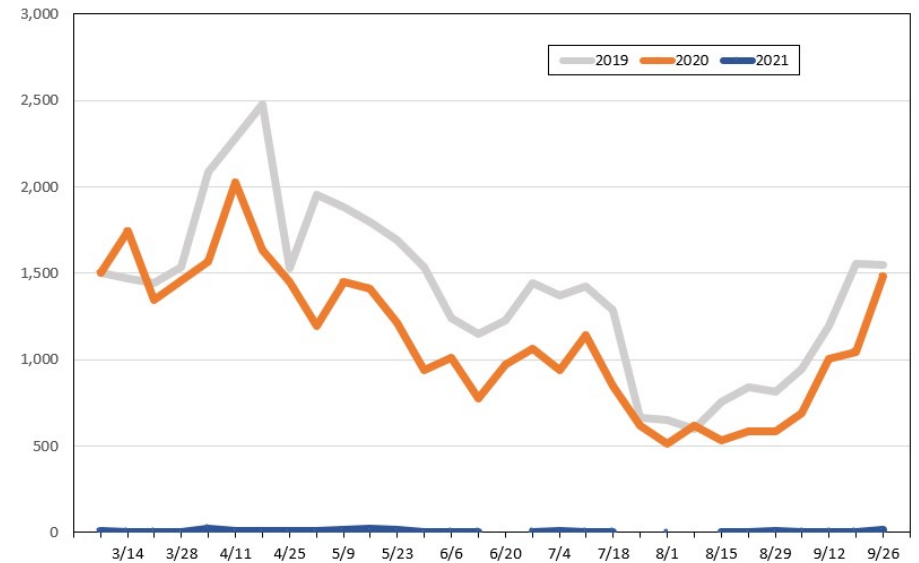
Source: Global Agency Pro, as of February 23, 2021

Travel Agency Weekly Bookings for Future Travel to Hawai'i as of February 23, 2021
Canada



Source: Global Agency Pro, as of February 23, 2021

Travel Agency Weekly Bookings for Future Travel to Hawai'i as of February 23, 2021
Australia



Source: Global Agency Pro, as of February 23, 2021