

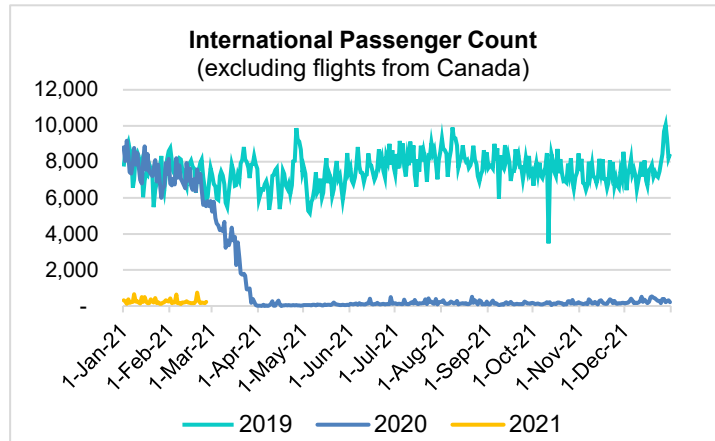
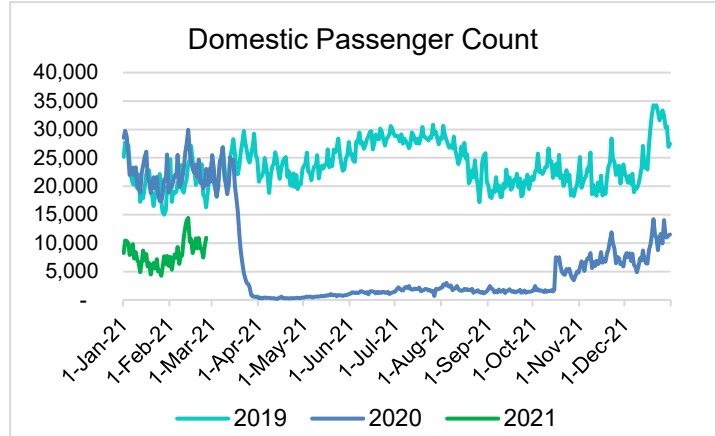
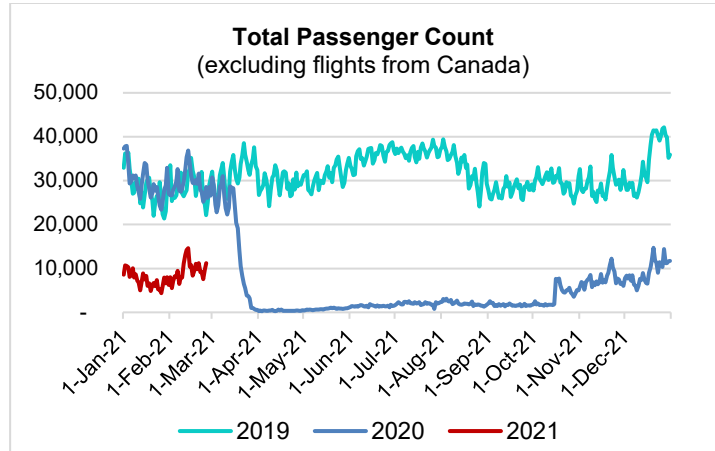
# HTA COVID-19 UPDATE

(Issued: 2/26/21 @ 4:30pm)

Reason for Trip by Arrival Airport - Transpacific Screened Passengers as of 02/25/21	Honolulu (HNL)	Kahului (OGG)	Kona (KOA)	Lihue (LIH)	Grand Total
Airline Crew	477	208	120	20	825
Connecting Flight (Transit)	342	37	2	0	381
Corporate Meeting	12	1	4	1	18
Essential Worker	74	18	9	5	106
Honeymoon	5	12	1	0	18
Incentive Trip	2	0	2	0	4
Intended Resident	111	27	31	12	181
Military or Federal Government	99	1	0	4	104
Other	72	21	12	3	108
Other Business	86	26	18	6	136
Pleasure/Vacation	3,423	2,752	1,161	81	7,417
Returning Resident	944	144	145	17	1,250
Sports Event	28	0	0	0	28
To Attend School	13	2	0	0	15
To Get Married	1	4	2	0	7
Visiting Friends or Relatives	1,206	292	286	16	1,800
<b>Grand Total</b>	<b>6,895</b>	<b>3,545</b>	<b>1,793</b>	<b>165</b>	<b>12,398</b>

Source: Safe Travels program developed by the State of Hawaii Office of Enterprise Technology Services

Note: The data is preliminary and subject to change



## Daily Passenger Count Table

02/25/2021	Domestic	International	Total
Oahu	6082	231	6313
Maui	3135		3135
Island of Hawaii	1587		1587
Kauai	138		138
State	10942	231	11173

## Novel Coronavirus in Hawaii

### COVID-19 Positive Cases

Cumulative totals as of 12:00pm on February 26, 2021

Total Confirmed Cases	27,399* (44 new)
Hawaii	2,237
Kauai	183
Lanai	108
Maui	2121†
Molokai	27
Oahu	21,892
Out of State	831
Pending	0
Required Hospitalization	1862‡
Hawaii Deaths	437
Cases in the past 14 days	613*

### Footnotes for COVID-19 Cases

\* As a result of updated information, one case on Oahu was recategorized to the Island of Hawaii, and two cases on Oahu and one case on the Island of Hawaii were removed from the counts.

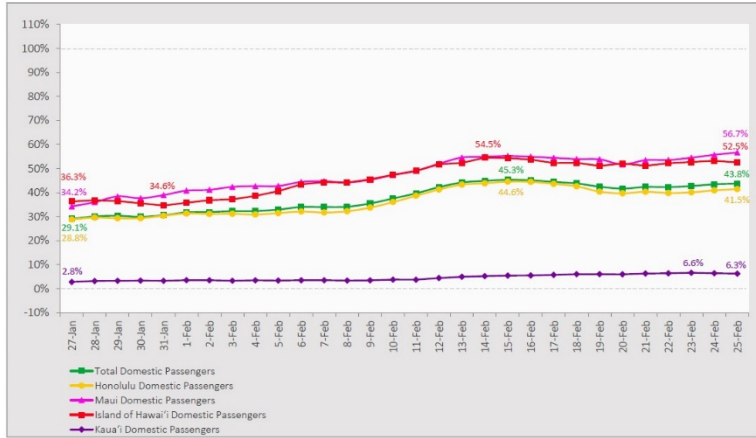
\*\*Using cases reported in the past 14 days provides a rough approximation of the number of cases currently meeting criteria for isolation. This proxy number for "active cases" resolves classification issues for cases unable to be reached or who are out of jurisdiction, for whom precise release from isolation date may not be possible to determine. It is also not influenced by lags in data entry. (This total does not include Hawaii residents diagnosed outside of Hawaii).

†One case is a Lanai resident whose exposure is on Maui Island and who will be remaining on Maui Island for the interim.

‡Includes Hawaii residents hospitalized out of state.

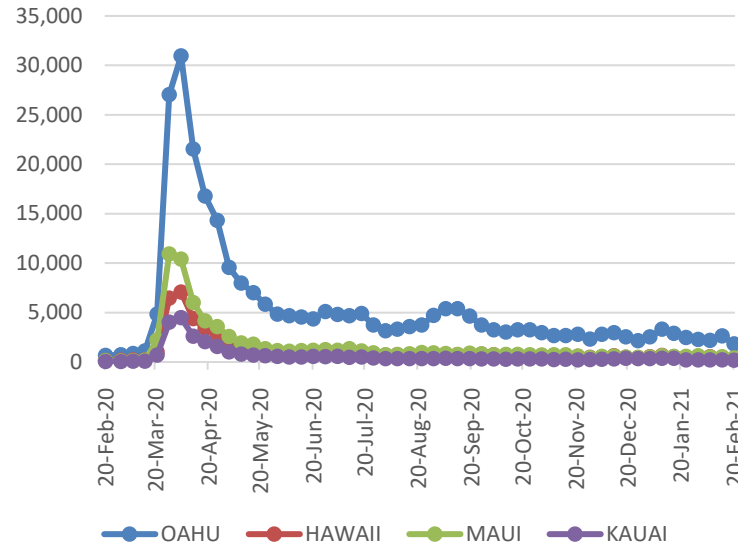
### 7-Day Domestic by Island Moving Average Daily Passenger Volume

2021 Volume as Percentage of 2020 Volume  
Through February 25, 2021



Source: HVCB analysis based on data from DBEDT  
Note: Passenger volume figures include both visitors and residents.

### 2021 Initial Weekly Unemployment Claims by Island



### Domestic by Island Month-to-Date and Year-to-Date Daily Passenger Volume

2021 Volume versus 2020 Volume  
Through February 25, 2021

February 2021 (Month-to-Date through February 25)

	2021	2020	Volume Change	Percent Change
Honolulu	120,893	305,030	-184,137	-60.4%
Maui County	75,542	146,619	-71,077	-48.5%
Island of Hawai'i	35,151	70,251	-35,100	-50.0%
Kaua'i	2,419	47,620	-45,201	-94.9%
<b>Total</b>	<b>234,005</b>	<b>569,520</b>	<b>-335,515</b>	<b>-58.9%</b>

2021 (Year-to-Date through February 25)

	2021	2020	Volume Change	Percent Change
Honolulu	245,663	689,856	-444,193	-64.4%
Maui County	138,278	318,091	-179,813	-56.5%
Island of Hawai'i	65,072	154,115	-89,043	-57.8%
Kaua'i	4,256	105,751	-101,495	-96.0%
<b>Total</b>	<b>453,269</b>	<b>1,267,813</b>	<b>-814,544</b>	<b>-64.2%</b>

Source: HVCB analysis based on data from DBEDT  
Note: Passenger volume figures include both visitors and residents. Total includes other international passengers.

### Weekly Unemployment Initial Claims: February 20, 2021

<b>State of Hawaii</b>	<b>2,891</b>
<b>C&amp;C of Oahu</b>	<b>1,829</b>
Honolulu	786
Kaneohe	185
Waipahu	858
<b>Hawaii County</b>	<b>364</b>
Hilo	198
Kona	166
<b>Maui County</b>	<b>413</b>
Wailuku	394
Molokai	19
<b>Kauai County</b>	<b>173</b>
<b>Agent (filed in Hawaii against another state)</b>	<b>112</b>

### News Highlights

February 26, 2021

**KHON2:** [Hawaii could open 1C category for vaccines by early April](#)

**Pacific Business News:** [Newly refreshed Kaimana Beach Hotel aims to 'reconnect' with community](#)

**The Maui News:** [Health officials investigate COVID-19 cluster among cleaning service workers](#)

**The Garden Island:** [Kauai County widens vaccine distributions for Kupuna](#)

**Successful Meetings:** [How to Improve Networking at Virtual Events](#)

**Jeffsetter:** [A New Airport Lounge Opened in Honolulu](#)

**Travel Pulse:** [Travel Industry Asking Congress to Provide More Assistance to Travel Agencies](#)

**USA Today:** [Hawaii lawmakers may standardize COVID travel restrictions across islands](#)

**The Washington Post:** [Digital health passports promise to simplify travel, but come with a lack of standards](#)

### Helpful Resources

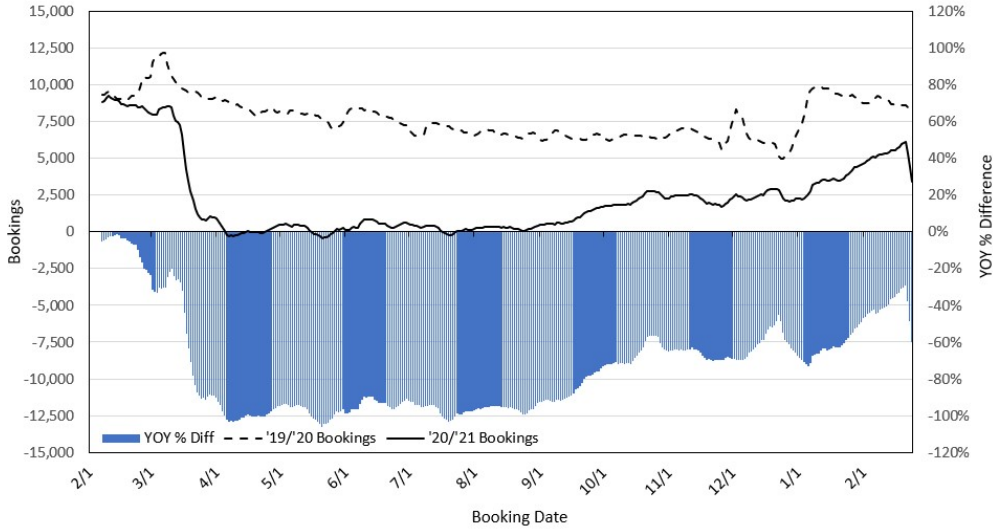
**Department of Health**  
<https://hawaiiicovid19.com/>

**Hawaii Tourism Authority**  
<https://www.hawaiitourismauthority.org/covid-19-updates/>

**Dept. of Business, Economic Development & Tourism**  
<https://dbedt.hawaii.gov/economic/covid19/>

**Department of Transportation**  
<https://hidot.hawaii.gov/coronavirus/>

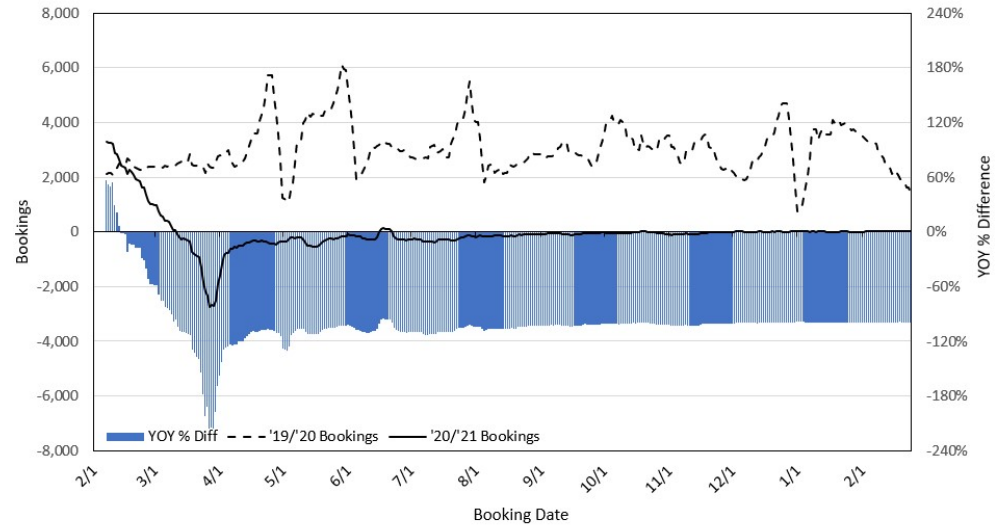
**Travel Agency Bookings to Hawaii for Future Arrivals\*  
Based on a 7-day Moving Average as of February 24, 2021**  
U.S.



\*Future Arrivals refers to all arrivals that are 'future' relative to the referenced booking date.  
Source: Global Agency Pro

Update: Feb 24, 2021

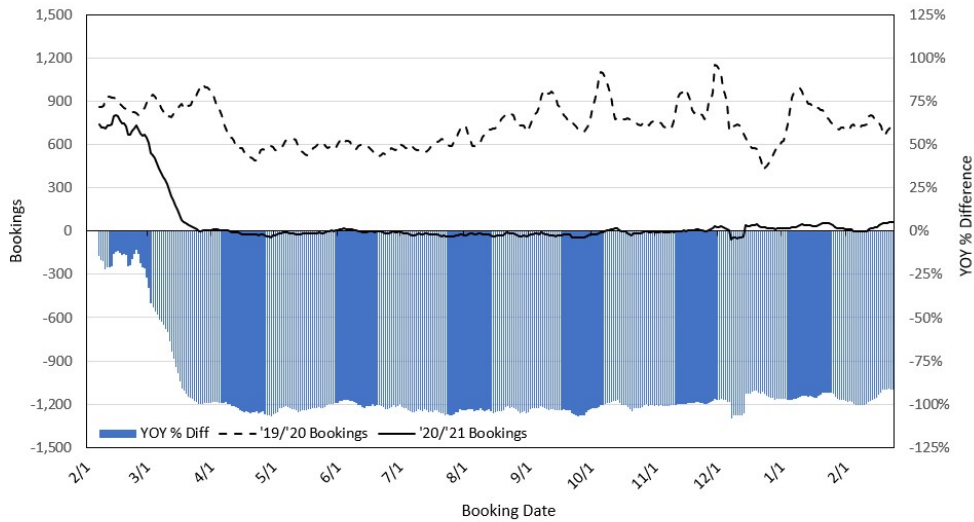
**Travel Agency Bookings to Hawaii for Future Arrivals\*  
Based on a 7-day Moving Average as of February 24, 2021**  
Japan



\*Future Arrivals refers to all arrivals that are 'future' relative to the referenced booking date.  
Source: Global Agency Pro

Update: Feb 24, 2021

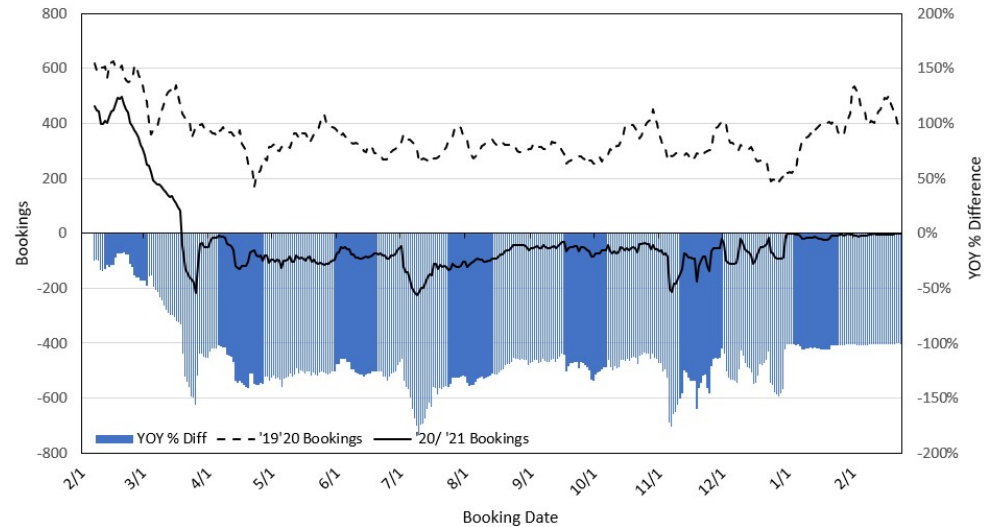
**Travel Agency Bookings to Hawaii for Future Arrivals\*  
Based on a 7-day Moving Average as of February 24, 2021**  
Canada



\*Future Arrivals refers to all arrivals that are 'future' relative to the referenced booking date.  
Source: Global Agency Pro

Update: Feb 24, 2021

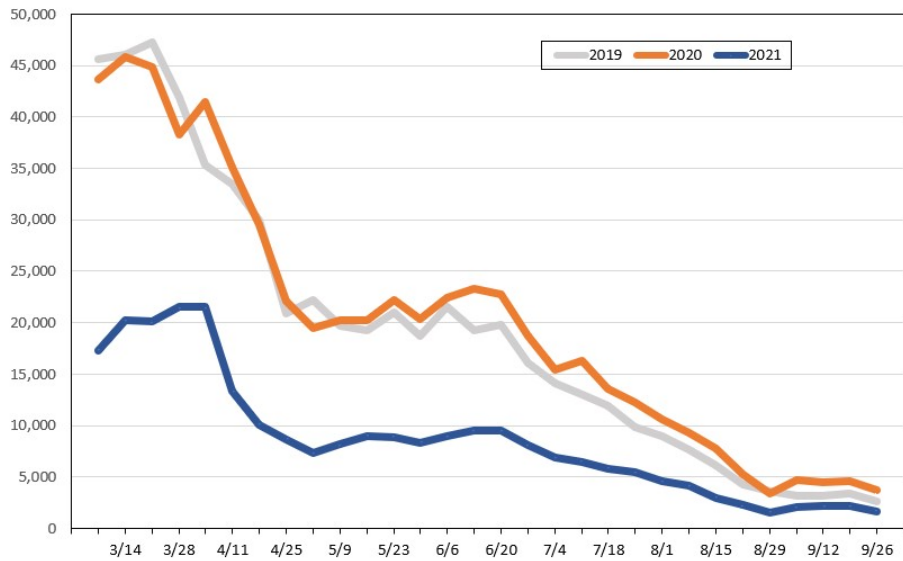
**Travel Agency Bookings to Hawaii for Future Arrivals\*  
Based on a 7-day Moving Average as of February 24, 2021**  
Australia



\*Future Arrivals refers to all arrivals that are 'future' relative to the referenced booking date.  
Source: Global Agency Pro

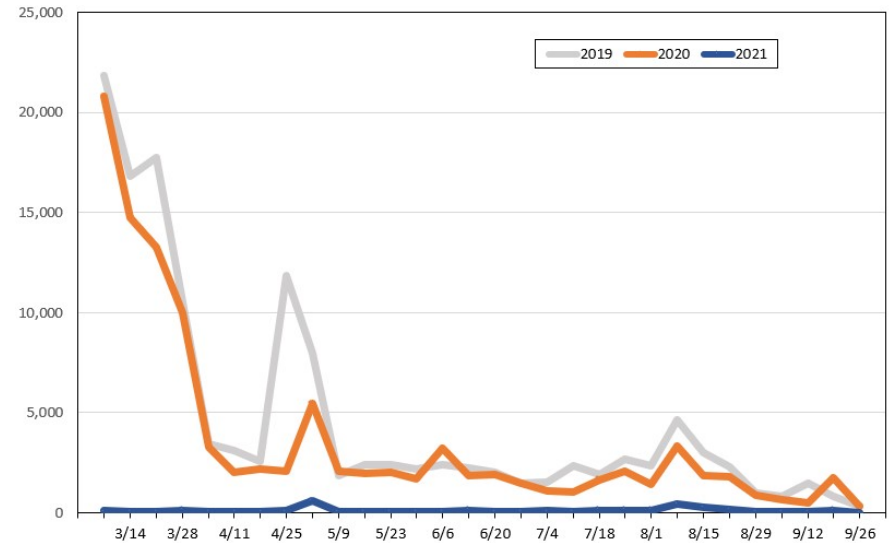
Update: Feb 24, 2021

**Travel Agency Weekly Bookings for Future Travel to Hawai'i as of February 24, 2021**  
U.S.



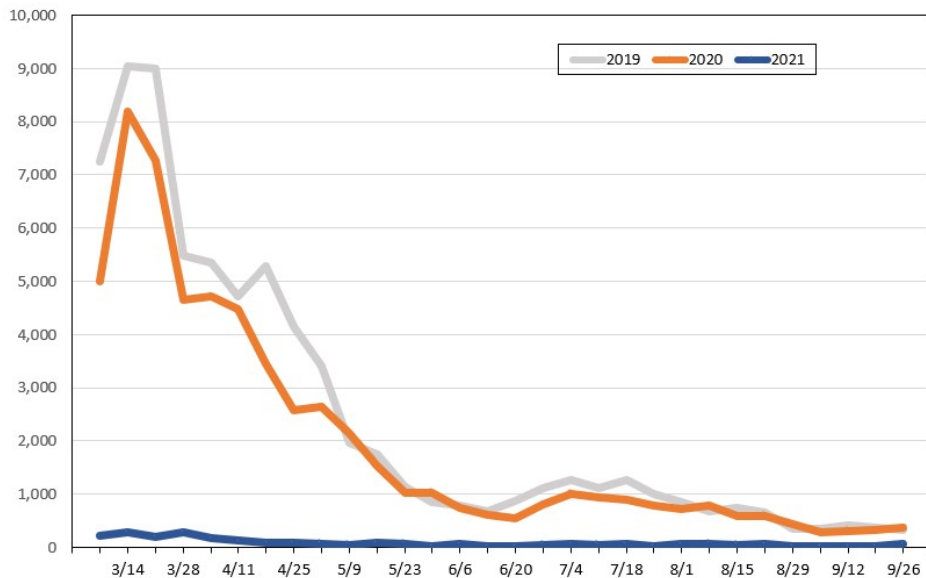
Source: Global Agency Pro, as of February 24, 2021

**Travel Agency Weekly Bookings for Future Travel to Hawai'i as of February 24, 2021**  
Japan



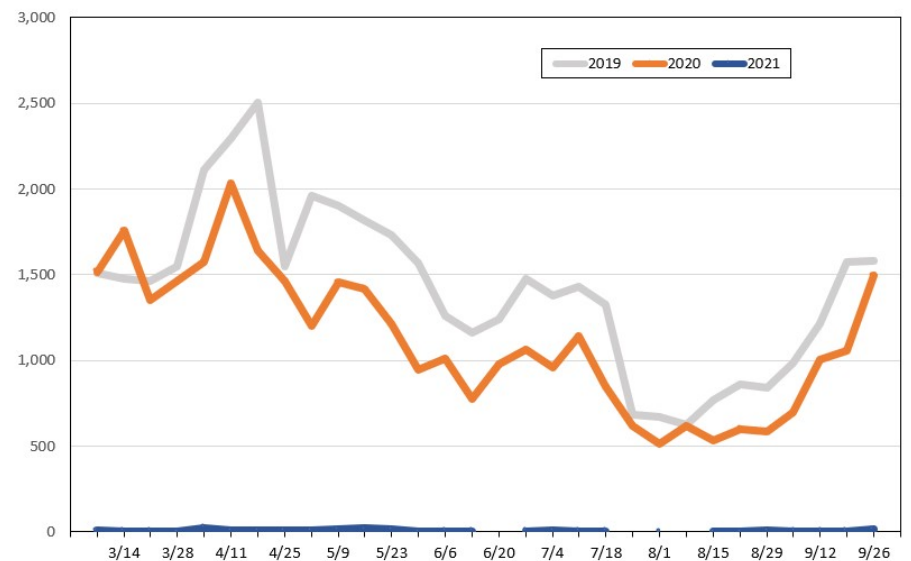
Source: Global Agency Pro, as of February 24, 2021

**Travel Agency Weekly Bookings for Future Travel to Hawai'i as of February 24, 2021**  
Canada



Source: Global Agency Pro, as of February 24, 2021

**Travel Agency Weekly Bookings for Future Travel to Hawai'i as of February 24, 2021**  
Australia



Source: Global Agency Pro, as of February 24, 2021