

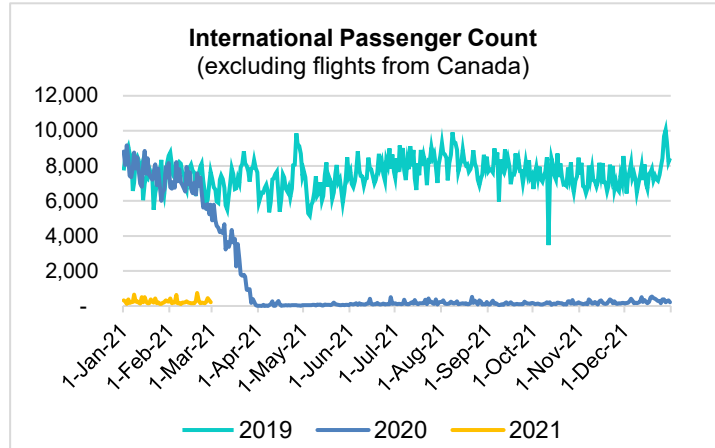
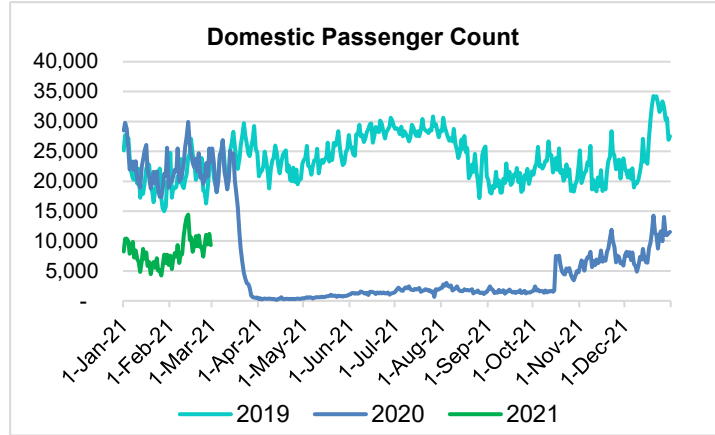
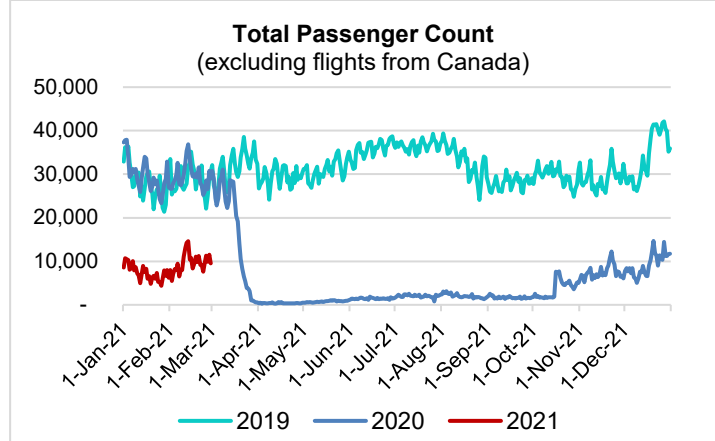
HTA COVID-19 UPDATE

(Issued: 3/1/21 @ 4:30pm)

Reason for Trip by Arrival Airport - Transpacific Screened Passengers as of 02/28/21	Honolulu (HNL)	Kahului (OGG)	Kona (KOA)	Lihue (LIH)	Grand Total
Airline Crew	443	212	118	18	791
Connecting Flight (Transit)	293	7	0	0	300
Corporate Meeting	11	2	4	0	17
Essential Worker	170	20	30	11	231
Honeymoon	17	17	8	0	42
Incentive Trip	1	3	0	0	4
Intended Resident	107	21	24	6	158
Military or Federal Government	165	1	0	2	168
Other	51	17	13	0	81
Other Business	91	26	26	6	149
Pleasure/Vacation	2,316	2,543	1,044	64	5,967
Returning Resident	1,224	170	178	44	1,616
Sports Event	1	0	0	0	1
To Attend School	17	0	2	0	19
To Get Married	3	3	0	0	6
Visiting Friends or Relatives	587	188	165	11	951
Grand Total	5,497	3,230	1,612	162	10,501

Source: Safe Travels program developed by the State of Hawaii Office of Enterprise Technology Services

Note: The data is preliminary and subject to change



Daily Passenger Count Table

02/28/2021	Domestic	International	Total
Oahu	4910	207	5117
Maui	2860		2860
Island of Hawaii	1420		1420
Kauai	137		137
State	9327	207	9534

Novel Coronavirus in Hawaii

COVID-19 Positive Cases

Cumulative totals as of 12:00pm on March 1, 2021

Total Confirmed Cases	27,588* (29 new)
Hawaii	2,245
Kauai	183
Lanai	108
Maui	2218†
Molokai	27
Oahu	21,966
Out of State	841
Pending	0
Required Hospitalization	1873‡
Hawaii Deaths	439
Cases in the past 14 days	630*

Footnotes for COVID-19 Cases

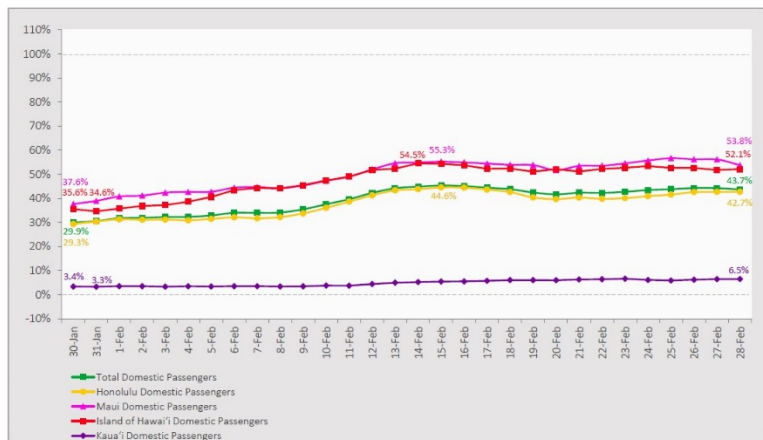
*

**Using cases reported in the past 14 days provides a rough approximation of the number of cases currently meeting criteria for isolation. This proxy number for "active cases" resolves classification issues for cases unable to be reached or who are out of jurisdiction, for whom precise release from isolation date may not be possible to determine. It is also not influenced by lags in data entry. (This total does not include Hawaii residents diagnosed outside of Hawaii).

†One case is a Lanai resident whose exposure is on Maui Island and who will be remaining on Maui Island for the interim.

‡Includes Hawaii residents hospitalized out of state.

7-Day Domestic by Island Moving Average Daily Passenger Volume
2021 Volume as Percentage of 2020 Volume
Through February 28, 2021



Source: HVCB analysis based on data from DBEDT
Note: Passenger volume figures include both visitors and residents.

Domestic by Island Month-to-Date and Year-to-Date Daily Passenger Volume
2021 Volume versus 2020 Volume
Through February 28, 2021

February 2021 (Month-to-Date through February 28)

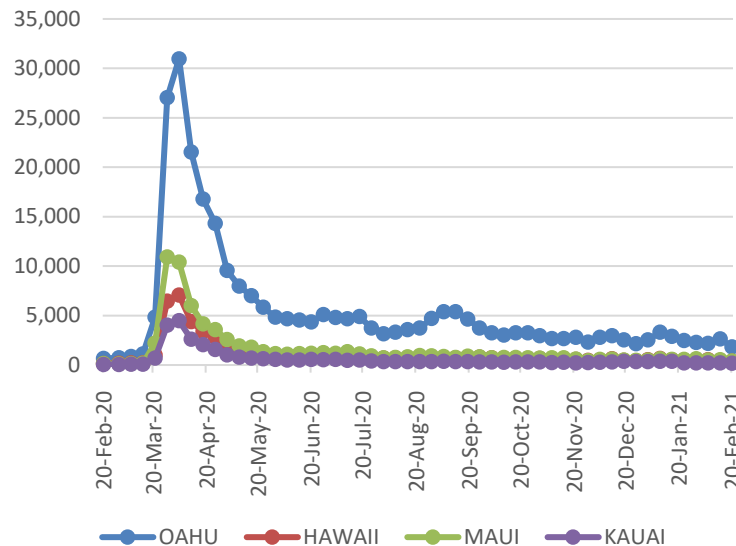
	2021	2020	Volume Change	Percent Change
Honolulu	135,950	339,969	-204,019	-60.0%
Maui County	85,411	162,312	-76,901	-47.4%
Island of Hawai'i	39,806	78,208	-38,402	-49.1%
Kaua'i	2,877	53,153	-50,276	-94.6%
Total	264,044	633,642	-369,598	-58.3%

2021 (Year-to-Date through February 28)

	2021	2020	Volume Change	Percent Change
Honolulu	260,720	724,795	-464,075	-64.0%
Maui County	148,147	333,784	-185,637	-55.6%
Island of Hawai'i	69,727	162,072	-92,345	-57.0%
Kaua'i	4,714	111,284	-106,570	-95.8%
Total	483,308	1,331,935	-848,627	-63.7%

Source: HVCB analysis based on data from DBEDT
Note: Passenger volume figures include both visitors and residents. Total includes other International passengers.

2021 Initial Weekly Unemployment Claims by Island



Weekly Unemployment Initial Claims: February 20, 2021

State of Hawaii	2,891
C&C of Oahu	1,829
Honolulu	786
Kaneohe	185
Waipahu	858
Hawaii County	364
Hilo	198
Kona	166
Maui County	413
Wailuku	394
Molokai	19
Kauai County	173
Agent (filed in Hawaii against another state)	112

News Highlights

March 1, 2021

Honolulu Star Advertiser: [Hawaii sees 60 new coronavirus cases, bringing the state's total to 27,559](#)

Honolulu Star Advertiser: [A year of COVID-19: Key leaders in Hawaii's pandemic response recall the challenges they faced](#)

Hawaii News Now: [Hawaii gets \\$87M to open multiple community vaccination sites](#)

Honolulu Star Advertiser: [Hawaii sees 60 new coronavirus cases, bringing the state's total to 27,559](#)

Honolulu Star Advertiser: [Hawaii sees 60 new coronavirus cases, bringing the state's total to 27,559](#)

The Maui News: [Mayor weighing 'additional restrictions' as cases rise](#)

West Hawaii Today: [State Laboratory finds new COVID variant](#)

TravelAge West: [World Travel Holdings Launches COVID-19 Travel Safety Training for its Advisors](#)

Travel Pulse: [What Top Cruise Lines Are Saying About Possible COVID-19 Vaccine Requirements](#)

Helpful Resources

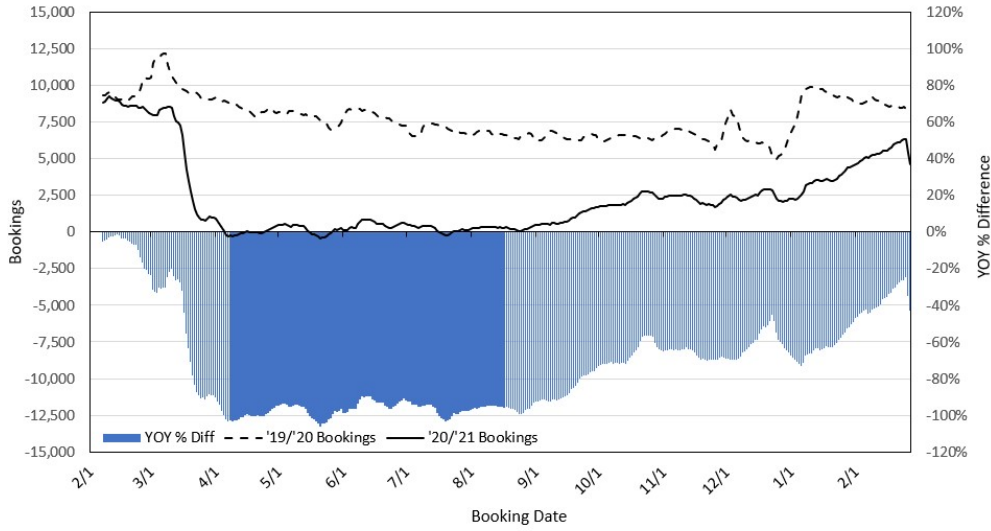
Department of Health
<https://hawaiiocovid19.com/>

Hawaii Tourism Authority
<https://www.hawaiitourismauthority.org/covid-19-updates/>

Dept. of Business, Economic Development & Tourism
<https://dbedt.hawaii.gov/economic/covid19/>

Department of Transportation
<https://hidot.hawaii.gov/coronavirus/>

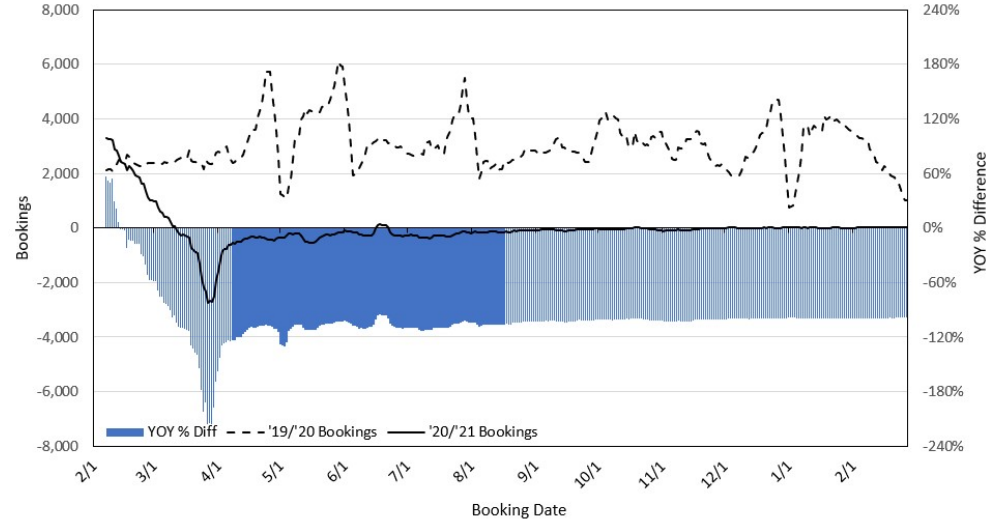
**Travel Agency Bookings to Hawaii for Future Arrivals*
Based on a 7-day Moving Average as of February 27, 2021
U.S.**



*Future Arrivals refers to all arrivals that are 'future' relative to the referenced booking date.
Source: Global Agency Pro

Update: Feb 27, 2021

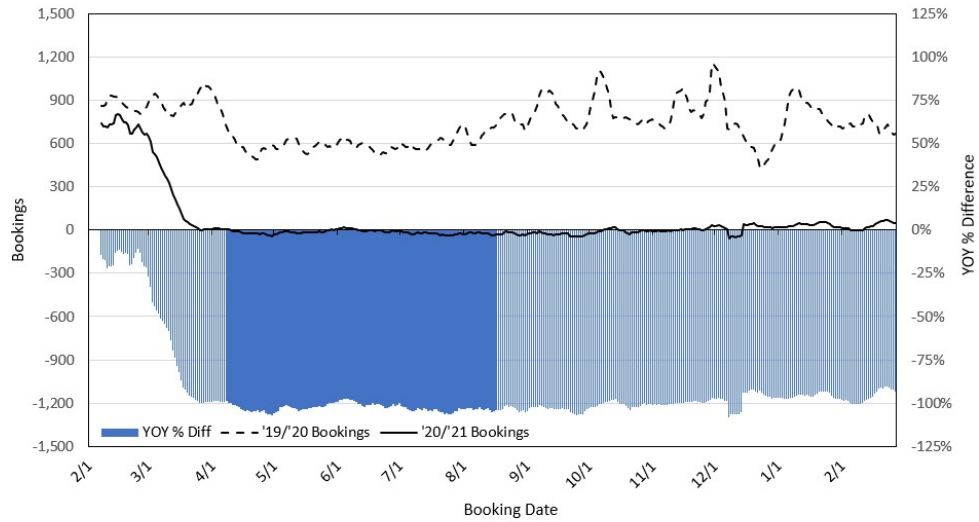
**Travel Agency Bookings to Hawaii for Future Arrivals*
Based on a 7-day Moving Average as of February 27, 2021
Japan**



*Future Arrivals refers to all arrivals that are 'future' relative to the referenced booking date.
Source: Global Agency Pro

Update: Feb 27, 2021

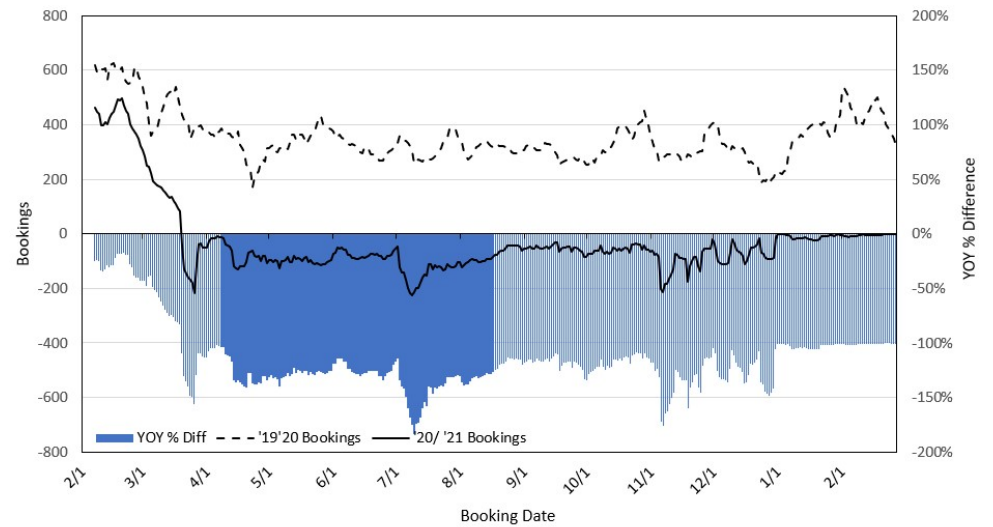
**Travel Agency Bookings to Hawaii for Future Arrivals*
Based on a 7-day Moving Average as of February 27, 2021
Canada**



*Future Arrivals refers to all arrivals that are 'future' relative to the referenced booking date.
Source: Global Agency Pro

Update: Feb 27, 2021

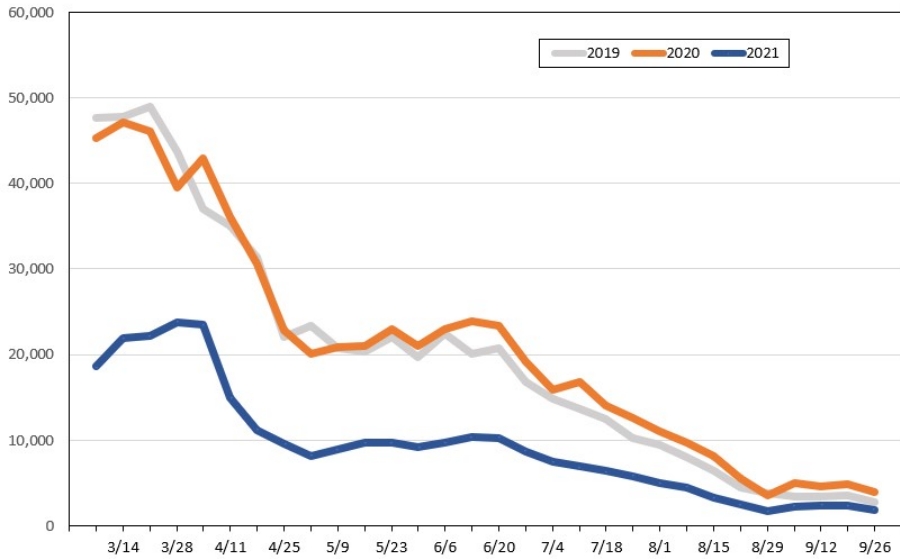
**Travel Agency Bookings to Hawaii for Future Arrivals*
Based on a 7-day Moving Average as of February 27, 2021
Australia**



*Future Arrivals refers to all arrivals that are 'future' relative to the referenced booking date.
Source: Global Agency Pro

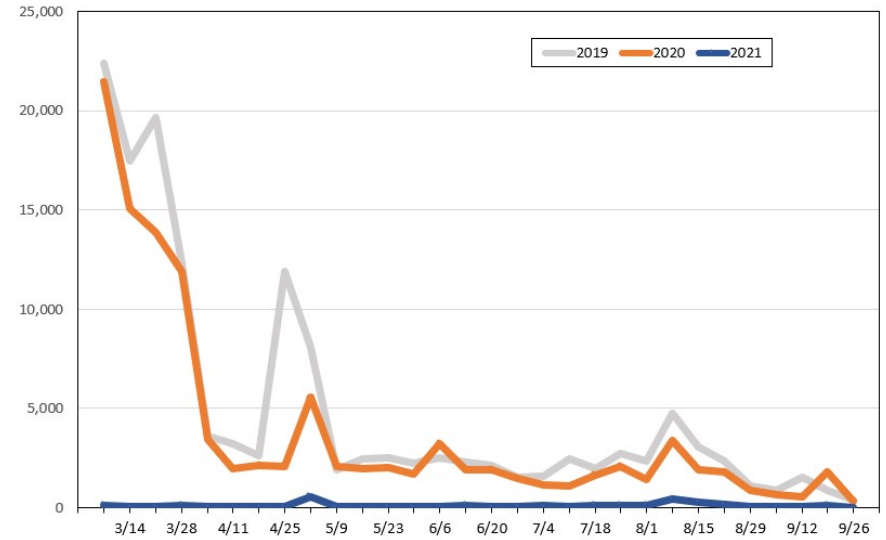
Update: Feb 27, 2021

Travel Agency Weekly Bookings for Future Travel to Hawai'i as of February 27, 2021
U.S.



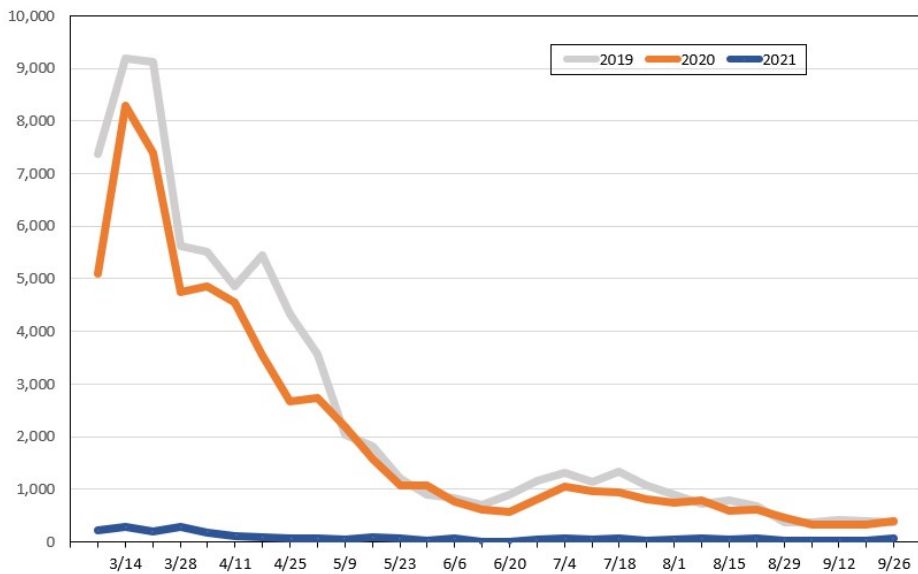
Source: Global Agency Pro, as of February 27, 2021

Travel Agency Weekly Bookings for Future Travel to Hawai'i as of February 27, 2021
Japan



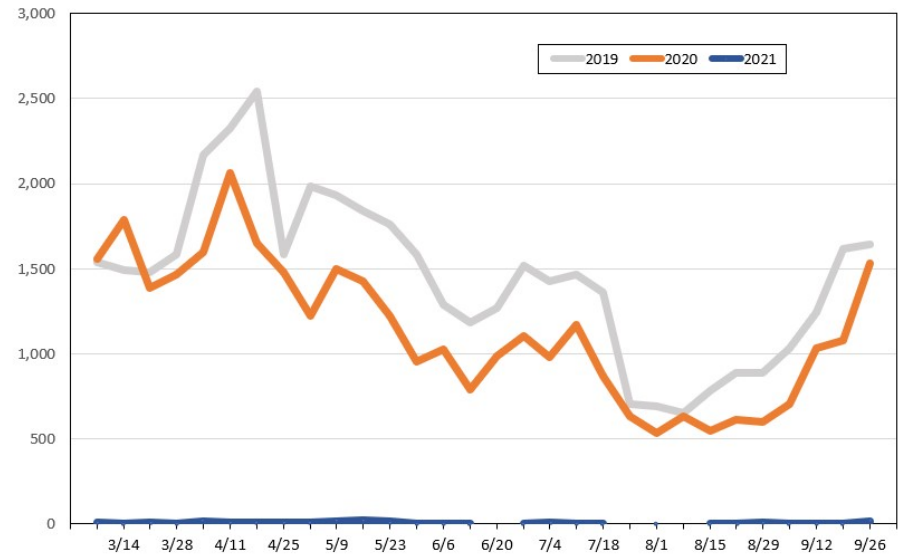
Source: Global Agency Pro, as of February 27, 2021

Travel Agency Weekly Bookings for Future Travel to Hawai'i as of February 27, 2021
Canada



Source: Global Agency Pro, as of February 27, 2021

Travel Agency Weekly Bookings for Future Travel to Hawai'i as of February 27, 2021
Australia



Source: Global Agency Pro, as of February 27, 2021