

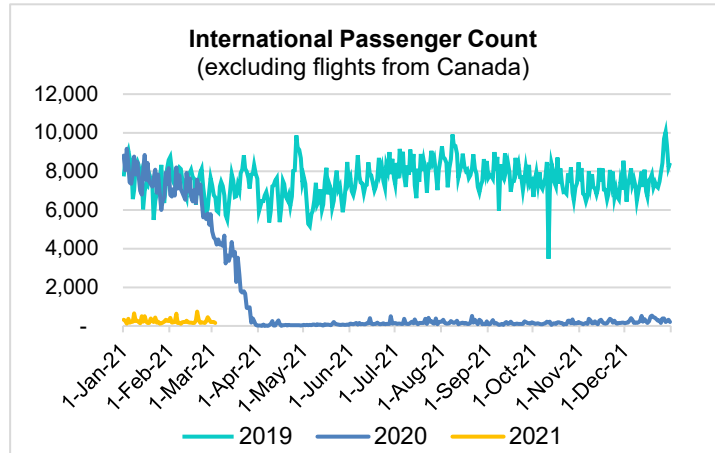
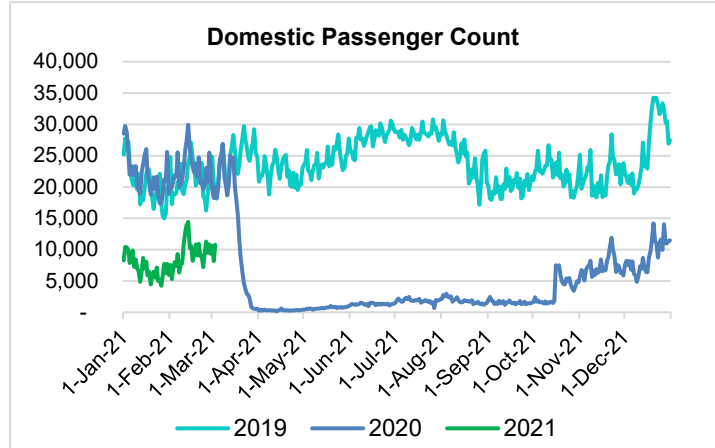
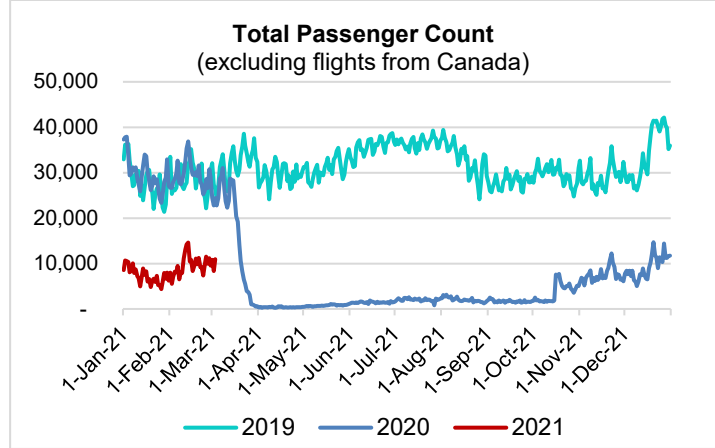
HTA COVID-19 UPDATE

(Issued: 3/4/21 @ 4:30pm)

Reason for Trip by Arrival Airport - Transpacific Screened Passengers as of 03/03/21	Honolulu (HNL)	Kahului (OGG)	Kona (KOA)	Lihue (LIH)	Grand Total
Airline Crew	480	223	119	21	843
Connecting Flight (Transit)	350	20	1	0	371
Corporate Meeting	4	14	1	0	19
Essential Worker	94	20	20	6	140
Honeymoon	18	13	0	0	31
Incentive Trip	2	2	0	0	4
Intended Resident	75	16	23	2	116
Military or Federal Government	88	0	1	4	93
Other	60	16	11	0	87
Other Business	84	30	30	1	145
Pleasure/Vacation	3,253	3,157	1,092	54	7,556
Returning Resident	792	154	128	29	1,103
Sports Event	28	0	0	0	28
To Attend School	3	0	0	0	3
To Get Married	7	6	2	0	15
Visiting Friends or Relatives	933	277	246	17	1,473
Grand Total	6,271	3,948	1,674	134	12,027

Source: Safe Travels program developed by the State of Hawaii Office of Enterprise Technology Services

Note: The data is preliminary and subject to change



Daily Passenger Count Table

03/03/2021	Domestic	International	Total
Oahu	5673	154	5827
Maui	3520		3520
Island of Hawaii	1476		1476
Kauai	102		102
State	10771	154	10925

Novel Coronavirus in Hawaii

COVID-19 Positive Cases

Cumulative totals as of 12:00pm on March 4, 2021

Total Confirmed Cases	27,699* (60 new)
Hawaii	2,252
Kauai	184
Lanai	108
Maui	2255†
Molokai	27
Oahu	22,026
Out of State	847
Pending	0
Required Hospitalization	1891‡
Hawaii Deaths	441
Cases in the past 14 days	635*

Footnotes for COVID-19 Cases

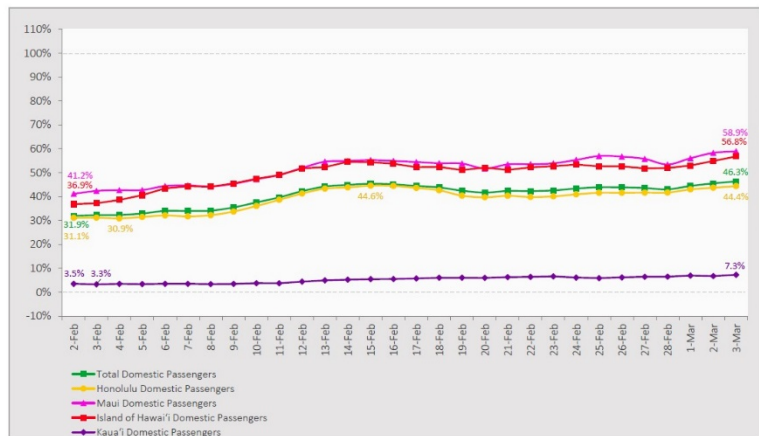
*As a result of updated information, two cases on Maui were recategorized to out-of-state, one case on Maui was recategorized to Kauai, and one case on Oahu was removed from the counts.

**Using cases reported in the past 14 days provides a rough approximation of the number of cases currently meeting criteria for isolation. This proxy number for "active cases" resolves classification issues for cases unable to be reached or who are out of jurisdiction, for whom precise release from isolation date may not be possible to determine. It is also not influenced by lags in data entry. (This total does not include Hawaii residents diagnosed outside of Hawaii).

†One case is a Lanai resident whose exposure is on Maui Island and who will be remaining on Maui Island for the interim.

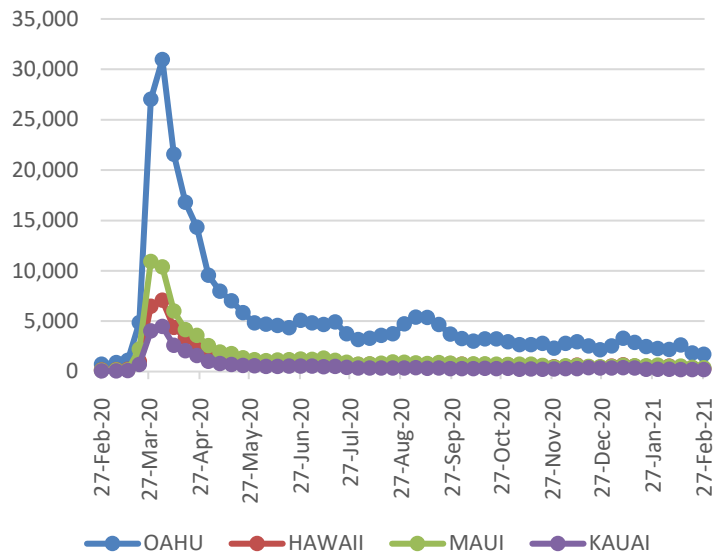
‡Includes Hawaii residents hospitalized out of state.

7-Day Domestic by Island Moving Average Daily Passenger Volume
2021 Volume as Percentage of 2020 Volume
Through March 3, 2021



Source: HVCB analysis based on data from DBEDT
Note: Passenger volume figures include both visitors and residents.

2021 Initial Weekly Unemployment Claims by Island



Domestic by Island Month-to-Date and Year-to-Date Daily Passenger Volume
2021 Volume versus 2020 Volume
Through March 3, 2021

March 2021 (Month-to-Date through March 3)

	2021	2020	Volume Change	Percent Change
Honolulu	15,596	33,885	-18,289	-54.0%
Maui County	9,349	14,619	-5,270	-36.0%
Island of Hawai'i	4,281	7,282	-3,001	-41.2%
Kaua'i	324	5,247	-4,923	-93.8%
Total	29,550	61,033	-31,483	-51.6%

2021 (Year-to-Date through March 3)

	2021	2020	Volume Change	Percent Change
Honolulu	275,466	770,879	-495,413	-64.3%
Maui County	157,353	355,784	-198,431	-55.8%
Island of Hawai'i	73,974	172,813	-98,839	-57.2%
Kaua'i	5,038	118,992	-113,954	-95.8%
Total	511,831	1,418,468	-906,637	-63.9%

Source: HVCB analysis based on data from DBEDT
Note: Passenger volume figures include both visitors and residents. Total includes other international passengers. 2020 includes one additional day due to Leap Year (February 29th, 2020).

Weekly Unemployment Initial Claims: February 27, 2021

State of Hawaii	2,684
C&C of Oahu	1,708
Honolulu	675
Kaneohe	176
Waipahu	857
Hawaii County	282
Hilo	168
Kona	115
Maui County	348
Wailuku	369
Molokai	15
Kauai County	196
Agent (filed in Hawaii against another state)	114

News Highlights

March 4, 2021

Honolulu Star Advertiser:

[Hawaii's hotel industry wants workers vaccinated now](#)

Hawaii News Now: [Does the second dose of the COVID vaccine really pack a bigger punch?](#)

KITV4: [Covid-19 cluster among UH Manoa students continues to grow](#)

Honolulu Civil Beat: [Starting Monday: Hawaii COVID-19 Vaccinations To Include 70+](#)

West Hawaii Today: [No new COVID-19 cases reported on Big Island](#)

Hawaii Tribune-Herald: [Vaccinations ramp up: 4,000 doses could be given at Hilo POD](#)

Conde Nast Traveler: [Women in the Travel Industry Are Bearing the Brunt of the Pandemic's Economic Hardships](#)

SF Gate: [What can you do once you're vaccinated? Actually a lot.](#)

Travel Pulse: [Americans Feel More Confident About Travel](#)

Travel Weekly: [For Marriott staff, it pays to get the Covid vaccine](#)

Helpful Resources

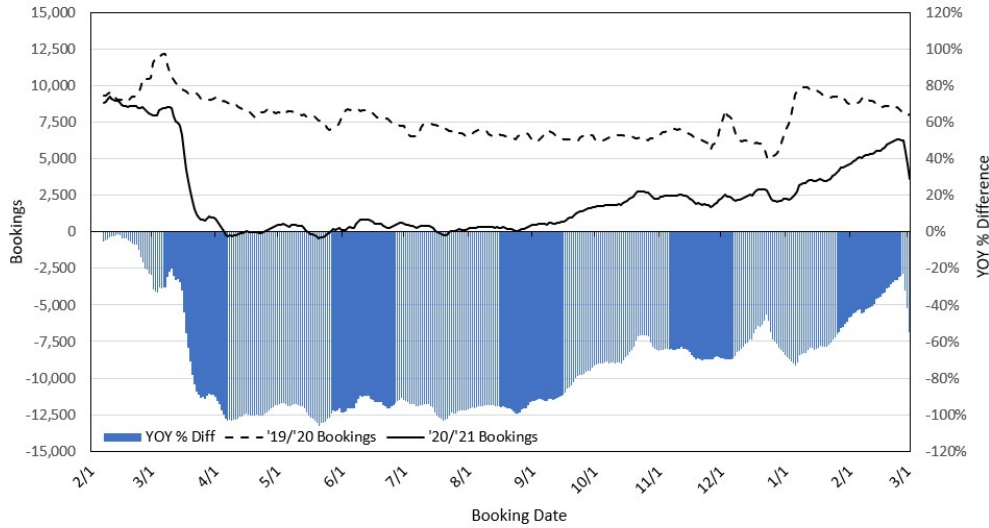
Department of Health
<https://hawaiiicovid19.com/>

Hawaii Tourism Authority
<https://www.hawaiitourismauthority.org/covid-19-updates/>

Dept. of Business, Economic Development & Tourism
<https://dbedt.hawaii.gov/economic/covid19/>

Department of Transportation
<https://hidot.hawaii.gov/coronavirus/>

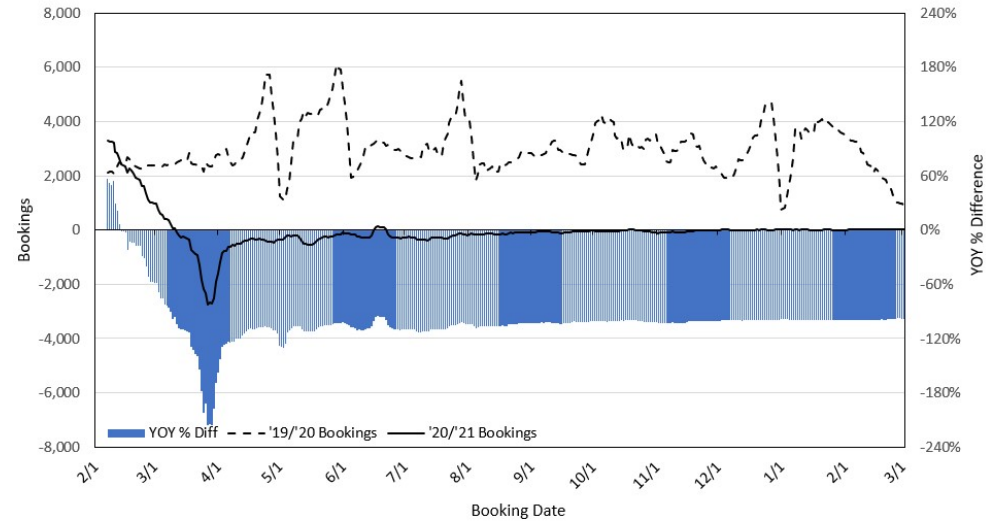
Travel Agency Bookings to Hawaii for Future Arrivals*
Based on a 7-day Moving Average as of March 2, 2021
U.S.



*Future Arrivals refers to all arrivals that are 'future' relative to the referenced booking date.
 Source: Global Agency Pro

Update: Mar 2, 2021

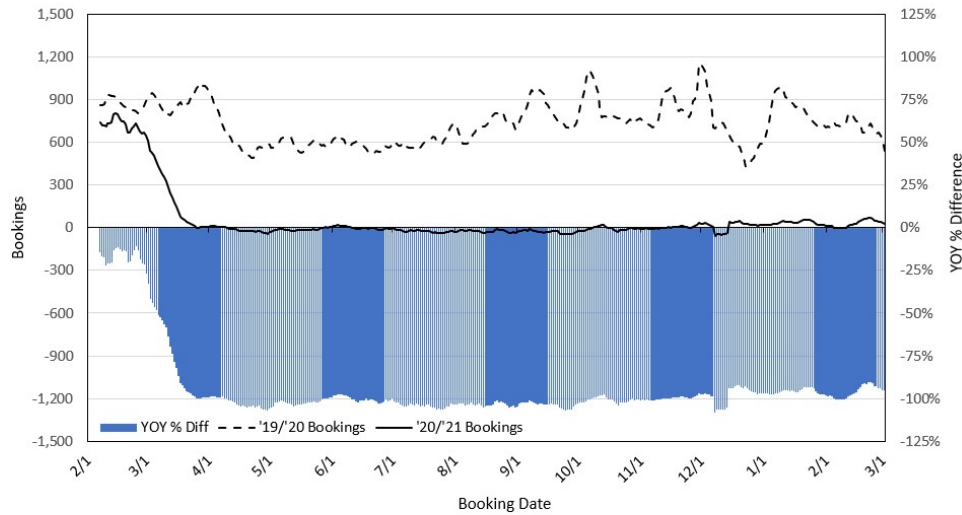
Travel Agency Bookings to Hawaii for Future Arrivals*
Based on a 7-day Moving Average as of March 2, 2021
Japan



*Future Arrivals refers to all arrivals that are 'future' relative to the referenced booking date.
 Source: Global Agency Pro

Update: Mar 2, 2021

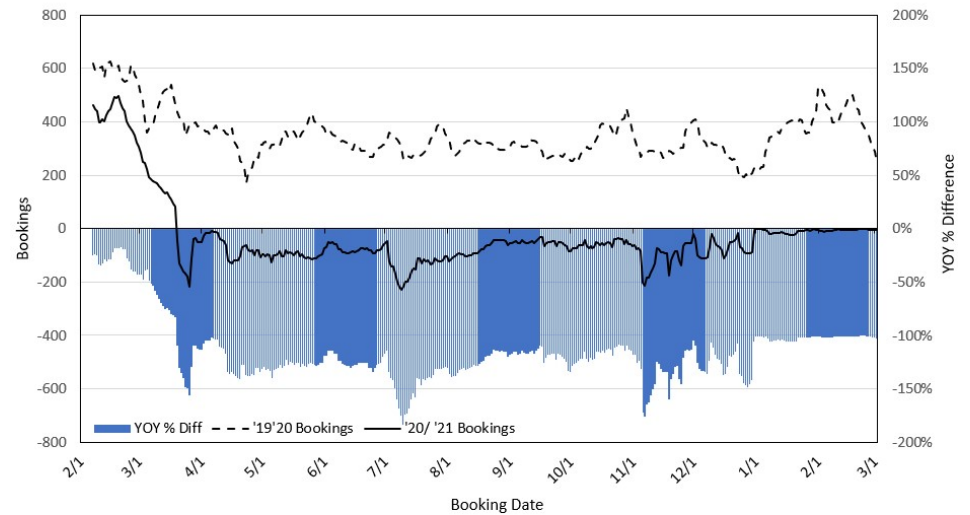
Travel Agency Bookings to Hawaii for Future Arrivals*
Based on a 7-day Moving Average as of March 2, 2021
Canada



*Future Arrivals refers to all arrivals that are 'future' relative to the referenced booking date.
 Source: Global Agency Pro

Update: Mar 2, 2021

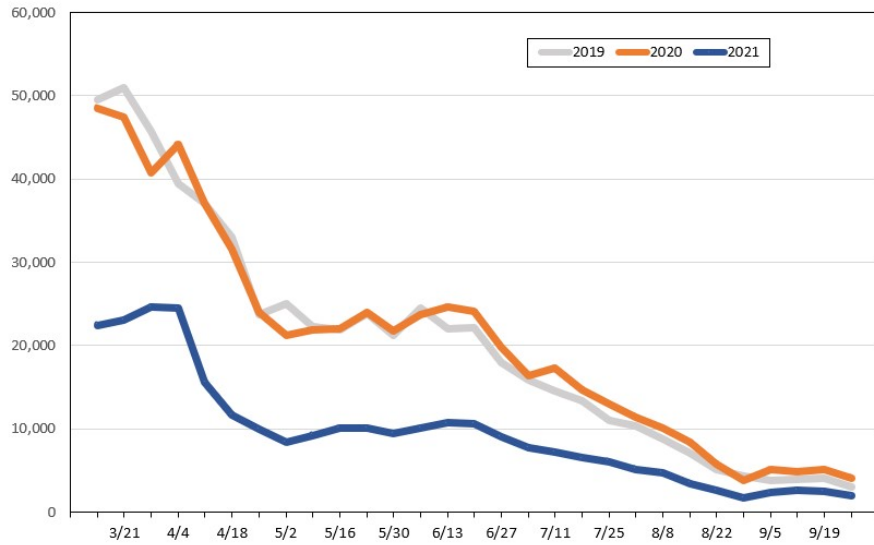
Travel Agency Bookings to Hawaii for Future Arrivals*
Based on a 7-day Moving Average as of March 2, 2021
Australia



*Future Arrivals refers to all arrivals that are 'future' relative to the referenced booking date.
 Source: Global Agency Pro

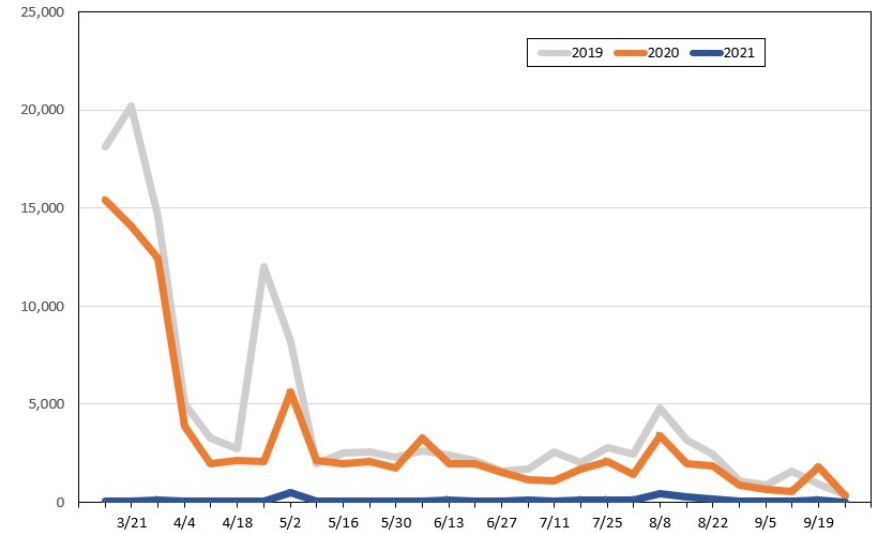
Update: Mar 2, 2021

Travel Agency Weekly Bookings for Future Travel to Hawai'i as of March 2, 2021
U.S.



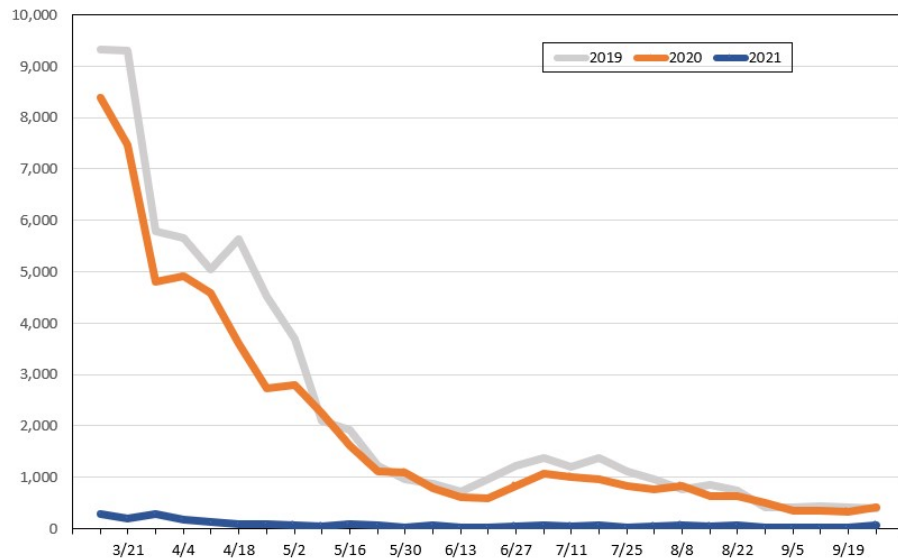
Source: Global Agency Pro, as of March 2, 2021

Travel Agency Weekly Bookings for Future Travel to Hawai'i as of March 2, 2021
Japan



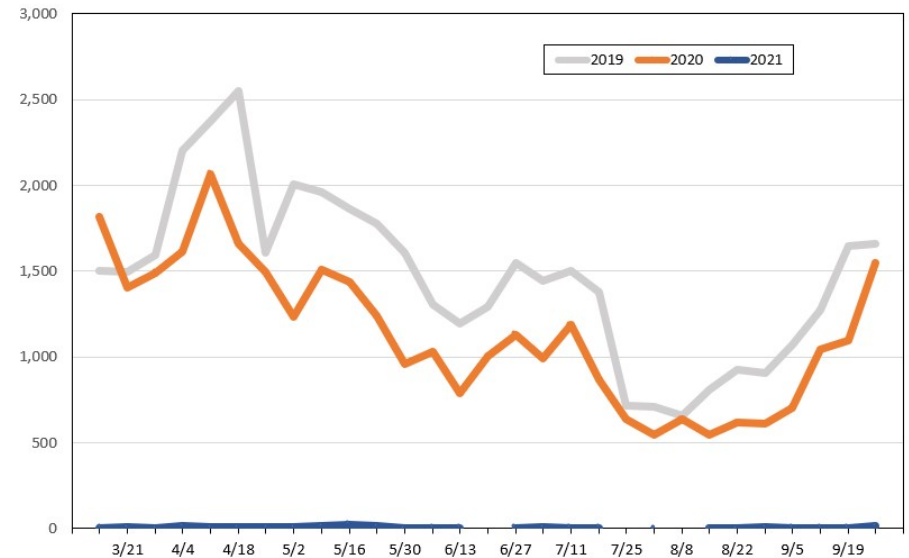
Source: Global Agency Pro, as of March 2, 2021

Travel Agency Weekly Bookings for Future Travel to Hawai'i as of March 2, 2021
Canada



Source: Global Agency Pro, as of March 2, 2021

Travel Agency Weekly Bookings for Future Travel to Hawai'i as of March 2, 2021
Australia



Source: Global Agency Pro, as of March 2, 2021