

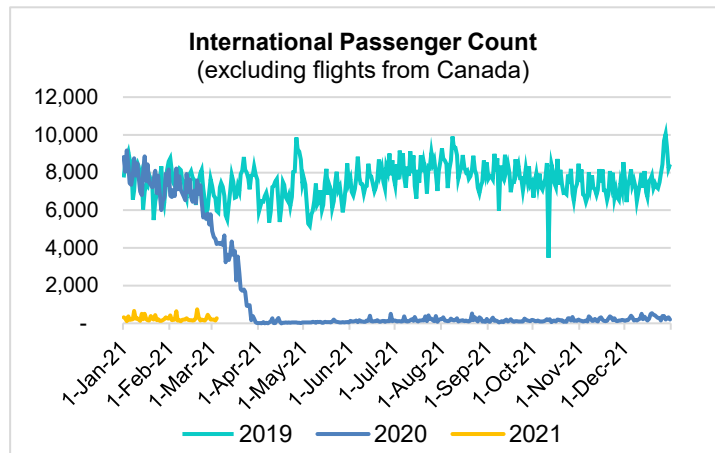
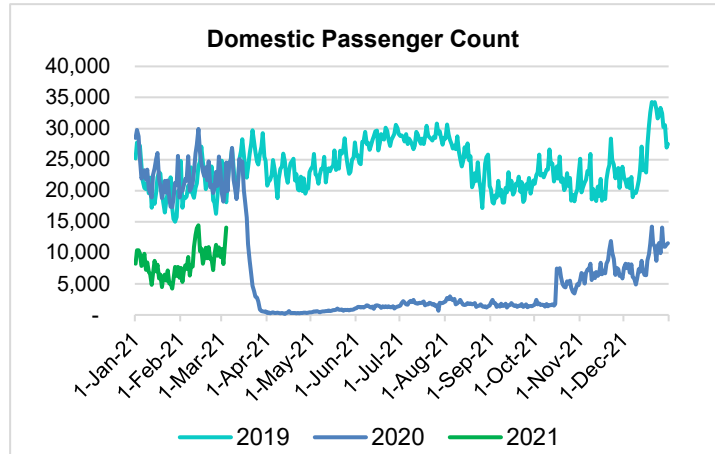
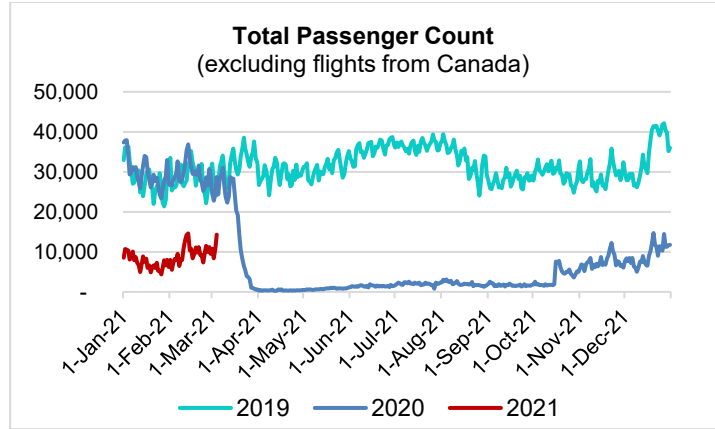
# HTA COVID-19 UPDATE

(Issued: 3/5/21 @ 4:30pm)

Reason for Trip by Arrival Airport - Transpacific Screened Passengers as of 03/04/21	Honolulu (HNL)	Kahului (OGG)	Kona (KOA)	Hilo (ITO)	Lihue (LIH)	Grand Total
Airline Crew	476	228	107	2	27	840
Connecting Flight (Transit)	433	15	4	1	0	453
Corporate Meeting	9	10	0	0	0	19
Essential Worker	79	14	13	1	2	109
Honeymoon	11	15	5	0	0	31
Incentive Trip	10	1	0	0	0	11
Intended Resident	112	12	26	3	2	155
Military or Federal Government	119	1	0	0	2	122
Other	125	18	14	1	2	160
Other Business	89	35	22	3	4	153
Pleasure/Vacation	4,507	3,819	1,594	23	118	10,061
Returning Resident	811	196	123	11	18	1,159
Sports Event	17	0	0	0	0	17
To Attend School	12	0	2	0	0	14
To Get Married	8	8	0	0	0	16
Visiting Friends or Relatives	1,466	385	329	12	34	2,226
<b>Grand Total</b>	<b>8,284</b>	<b>4,757</b>	<b>2,239</b>	<b>57</b>	<b>209</b>	<b>15,546</b>

Source: Safe Travels program developed by the State of Hawaii Office of Enterprise Technology Services

Note: The data is preliminary and subject to change



## Daily Passenger Count Table

03/04/2021	Domestic	International	Total
Oahu	7626	271	7897
Maui	4288		4288
Island of Hawaii	2022		2022
Kauai	135		135
State	14071	271	14342

## Novel Coronavirus in Hawaii

### COVID-19 Positive Cases

Cumulative totals as of 12:00pm on March 5, 2021

Total Confirmed Cases	27,753* (54 new)
Hawaii	2,256
Kauai	184
Lanai	108
Maui	2273†
Molokai	27
Oahu	22,055
Out of State	850
Pending	0
Required Hospitalization	1893‡
Hawaii Deaths	443
Cases in the past 14 days	639*

## Footnotes for COVID-19 Cases

\*

\*\*Using cases reported in the past 14 days provides a rough approximation of the number of cases currently meeting criteria for isolation. This proxy number for "active cases" resolves classification issues for cases unable to be reached or who are out of jurisdiction, for whom precise release from isolation date may not be possible to determine. It is also not influenced by lags in data entry. (This total does not include Hawaii residents diagnosed outside of Hawaii)

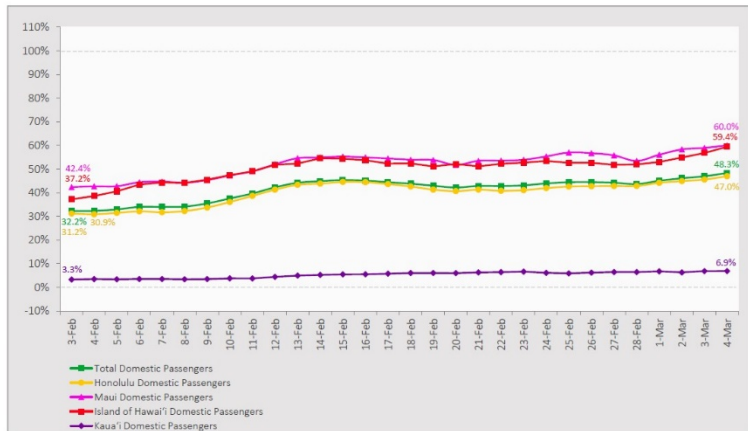
†One case is a Lanai resident whose exposure is on Maui Island and who will be remaining on Maui Island for the interim.

‡Includes Hawaii residents hospitalized out of state.

§Includes cases that meet isolation release criteria (Isolation should be maintained until at least 24 hours after resolution of fever and myalgia without the use of antipyretics OR at least 10 days have passed since symptom onset, whichever is longer). (The cases that have died and one case that has left the jurisdiction have been removed from these counts). Positive cases include confirmed cases, and Hawaii residents and non-residents; data are preliminary and subject to change. Note that CDC provides case counts according to states of residence.

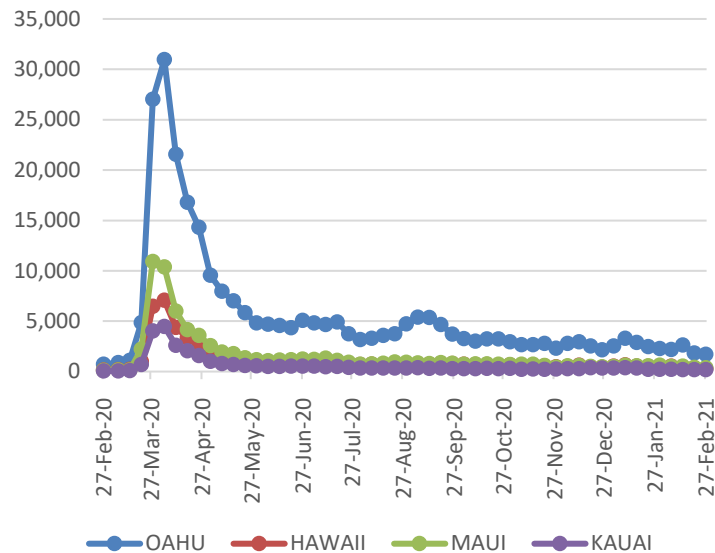
### 7-Day Domestic by Island Moving Average Daily Passenger Volume

2021 Volume as Percentage of 2020 Volume  
Through March 4, 2021



Source: HVCB analysis based on data from DBEDT  
Note: Passenger volume figures include both visitors and residents.

### 2021 Initial Weekly Unemployment Claims by Island



### Domestic by Island Month-to-Date and Year-to-Date Daily Passenger Volume

2021 Volume versus 2020 Volume  
Through March 4, 2021

March 2021 (Month-to-Date through March 4)

	2021	2020	Volume Change	Percent Change
Honolulu	23,222	45,159	-21,937	-48.6%
Maui County	13,637	19,188	-5,551	-28.9%
Island of Hawai'i	6,303	9,727	-3,424	-35.2%
Kaua'i	410	6,914	-6,504	-94.1%
<b>Total</b>	<b>43,572</b>	<b>80,988</b>	<b>-37,416</b>	<b>-46.2%</b>

2021 (Year-to-Date through March 4)

	2021	2020	Volume Change	Percent Change
Honolulu	284,891	782,153	-497,262	-63.6%
Maui County	161,641	360,353	-198,712	-55.1%
Island of Hawai'i	75,996	175,258	-99,262	-56.6%
Kaua'i	5,117	120,659	-115,542	-95.8%
<b>Total</b>	<b>527,645</b>	<b>1,438,423</b>	<b>-910,778</b>	<b>-63.3%</b>

Source: HVCB analysis based on data from DBEDT  
Note: Passenger volume figures include both visitors and residents. Total includes other international passengers. 2020 includes one additional day due to Leap Year (February 29th, 2020).

### Weekly Unemployment Initial Claims: February 27, 2021

<b>State of Hawaii</b>	<b>2,684</b>
<b>C&amp;C of Oahu</b>	<b>1,708</b>
Honolulu	675
Kaneohe	176
Waipahu	857
<b>Hawaii County</b>	<b>282</b>
Hilo	168
Kona	115
<b>Maui County</b>	<b>348</b>
Wailuku	369
Molokai	15
<b>Kauai County</b>	<b>196</b>
<b>Agent (filed in Hawaii against another state)</b>	<b>114</b>

## News Highlights

March 5, 2021

**Hawaii News Now:** [Hawaii-based travel agency aims to be COVID expert for travelers](#)

**KITV4:** ['Paperwork problem' in Maui County delays reports of Covid-19 shots being administered](#)

**Honolulu Magazine:** [Photo Gallery: Hawaii During the Pandemic in 2020](#)

**Hawaii Tribune-Herald:** [Sustainability Summit explores ecological issues on Big Island](#)

**Big Island Now:** [Mass COVID Vaccination Clinics Continue Weekly, Walk-Ins Accepted on Fridays](#)

**eTurbo News:** [Hawaii Tourism plans for Maui, Molokai and Lanai](#)

**Forbes:** [March U.S. Travel Restrictions By State—Quarantine And Covid-19 Test Requirements](#)

**Travel Pulse:** [Are Americans Waiting for Vaccines to Travel?](#)

**Travel Weekly:** [Covid vaccines roll out, fueling a comeback of traveler confidence](#)

### Helpful Resources

**Department of Health**  
<https://hawaiiicovid19.com/>

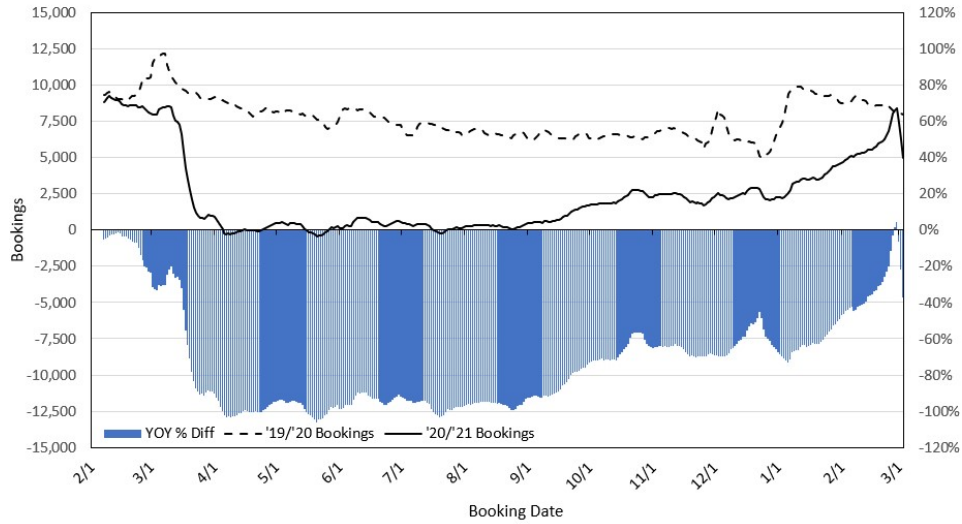
**Hawaii Tourism Authority**  
<https://www.hawaiitourismauthority.org/covid-19-updates/>

**Dept. of Business, Economic Development & Tourism**  
<https://dbedt.hawaii.gov/economic/covid19/>

**Department of Transportation**  
<https://hidot.hawaii.gov/coronavirus/>

**Travel Agency Bookings to Hawaii for Future Arrivals\*  
Based on a 7-day Moving Average as of March 3, 2021**

**U.S.**

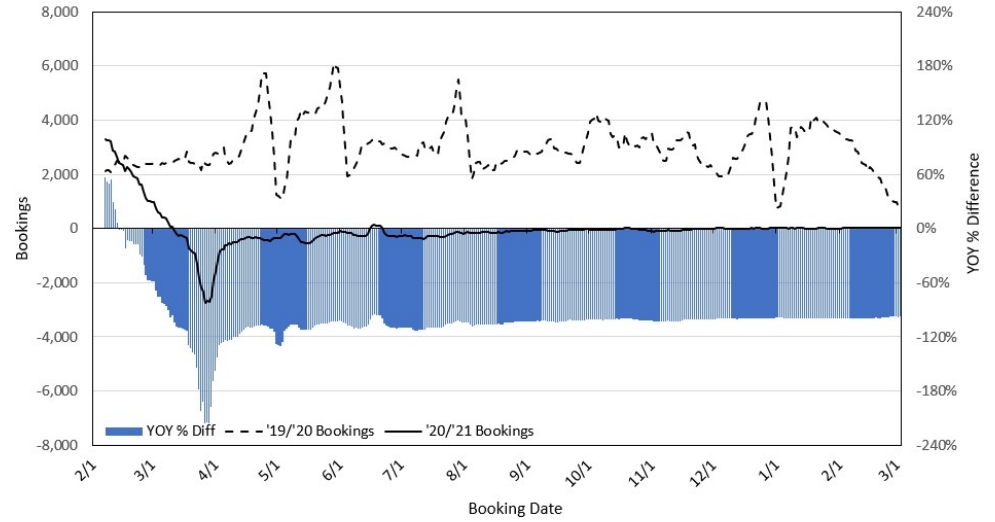


\*Future Arrivals refers to all arrivals that are 'future' relative to the referenced booking date.  
Source: Global Agency Pro

Update: Mar 3, 2021

**Travel Agency Bookings to Hawaii for Future Arrivals\*  
Based on a 7-day Moving Average as of March 3, 2021**

**Japan**

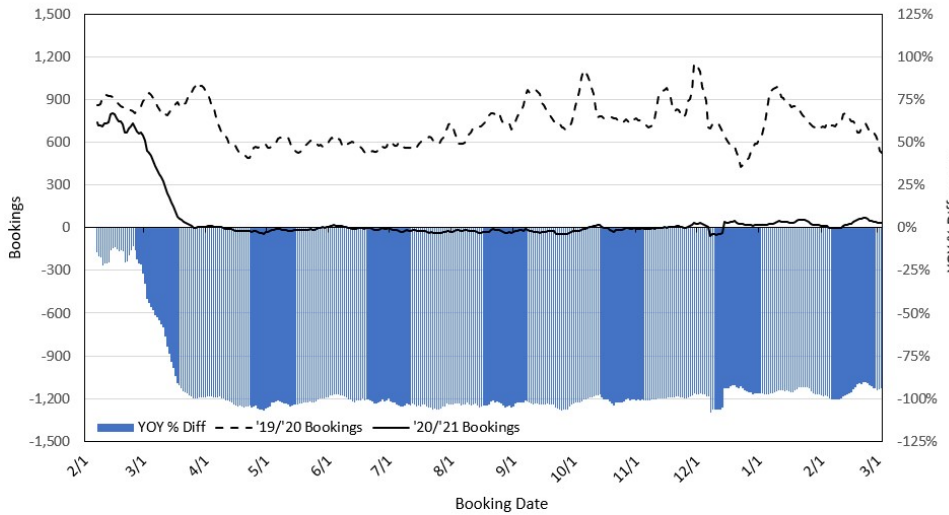


\*Future Arrivals refers to all arrivals that are 'future' relative to the referenced booking date.  
Source: Global Agency Pro

Update: Mar 3, 2021

**Travel Agency Bookings to Hawaii for Future Arrivals\*  
Based on a 7-day Moving Average as of March 3, 2021**

**Canada**

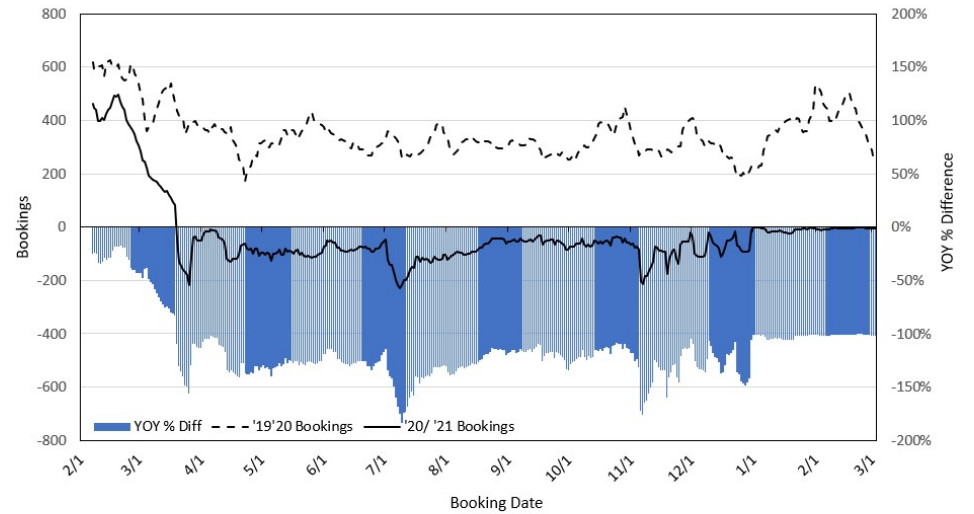


\*Future Arrivals refers to all arrivals that are 'future' relative to the referenced booking date.  
Source: Global Agency Pro

Update: Mar 3, 2021

**Travel Agency Bookings to Hawaii for Future Arrivals\*  
Based on a 7-day Moving Average as of March 3, 2021**

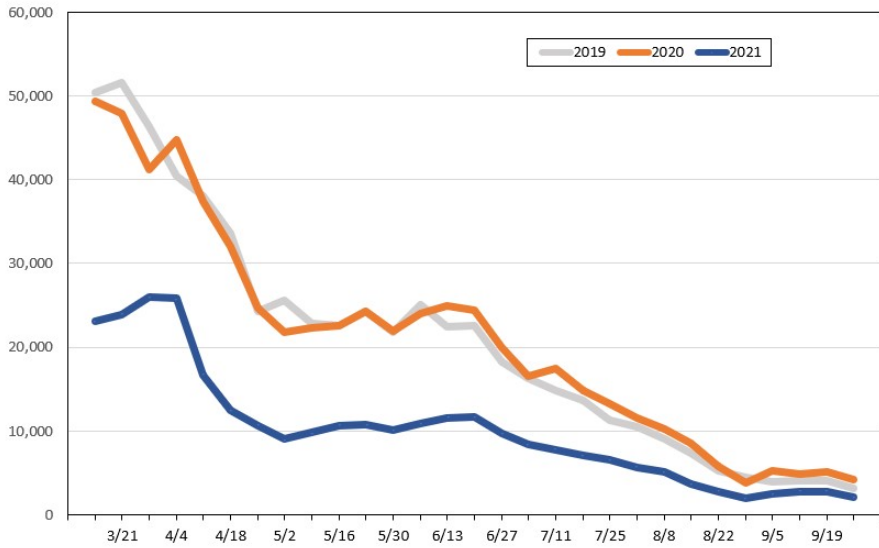
**Australia**



\*Future Arrivals refers to all arrivals that are 'future' relative to the referenced booking date.  
Source: Global Agency Pro

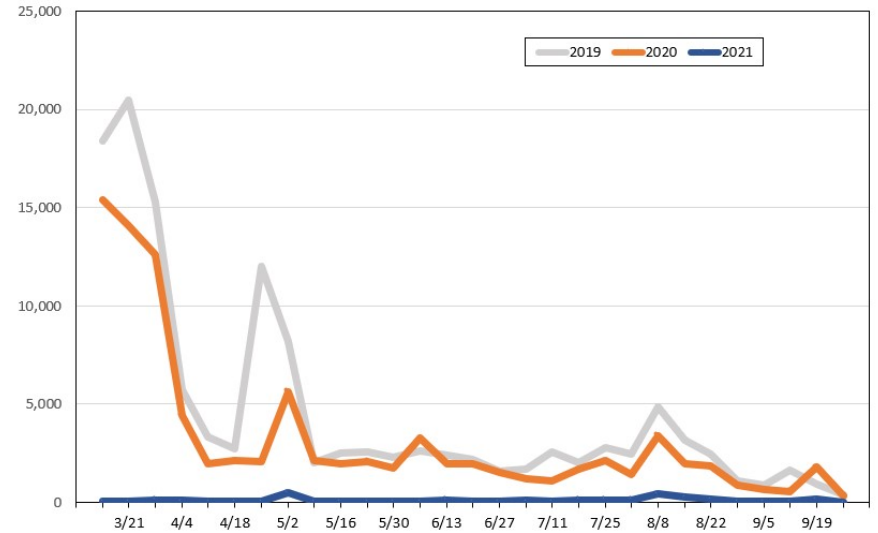
Update: Mar 3, 2021

**Travel Agency Weekly Bookings for Future Travel to Hawai'i as of March 3, 2021**  
U.S.



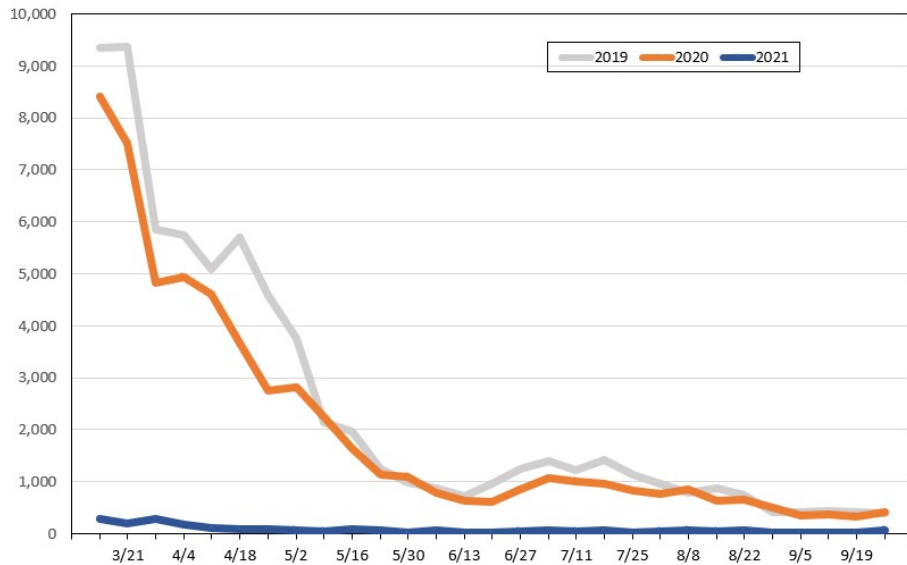
Source: Global Agency Pro, as of March 3, 2021

**Travel Agency Weekly Bookings for Future Travel to Hawai'i as of March 3, 2021**  
Japan



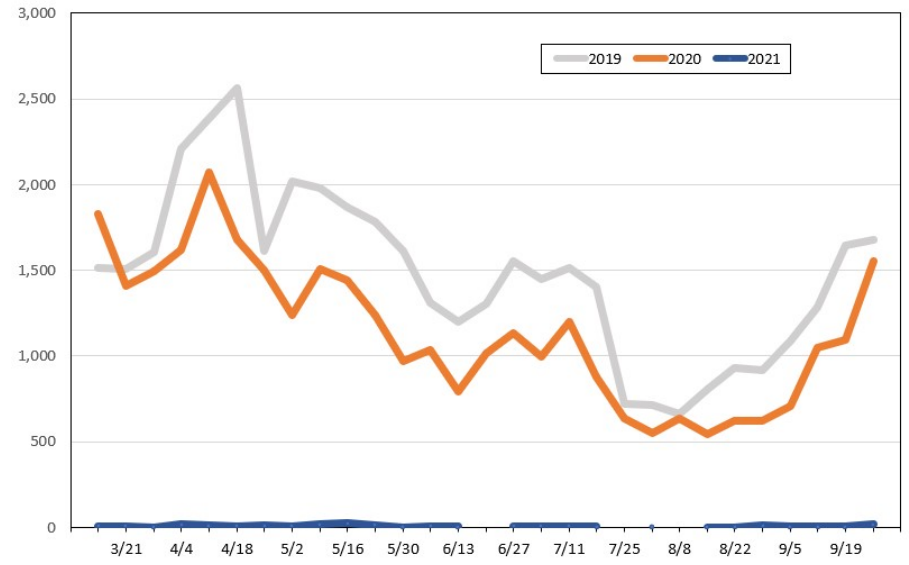
Source: Global Agency Pro, as of March 3, 2021

**Travel Agency Weekly Bookings for Future Travel to Hawai'i as of March 3, 2021**  
Canada



Source: Global Agency Pro, as of March 3, 2021

**Travel Agency Weekly Bookings for Future Travel to Hawai'i as of March 3, 2021**  
Australia



Source: Global Agency Pro, as of March 3, 2021