

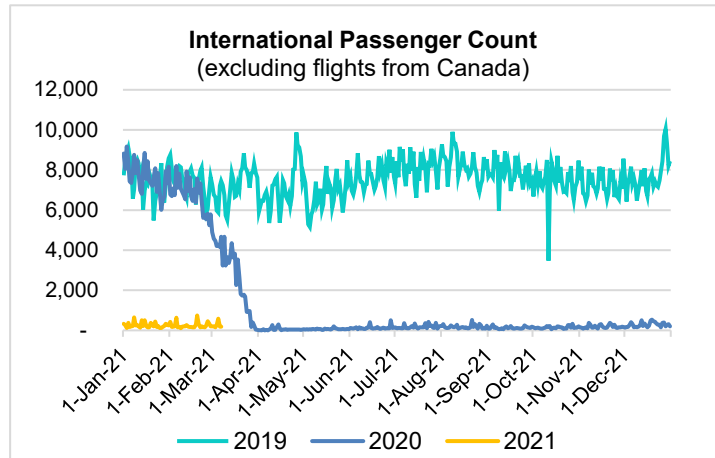
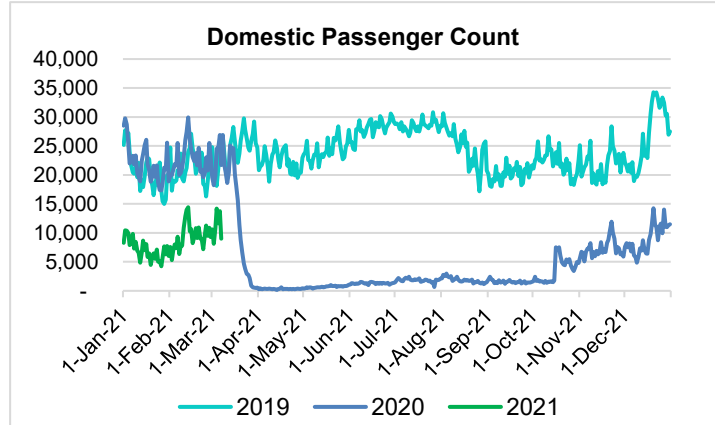
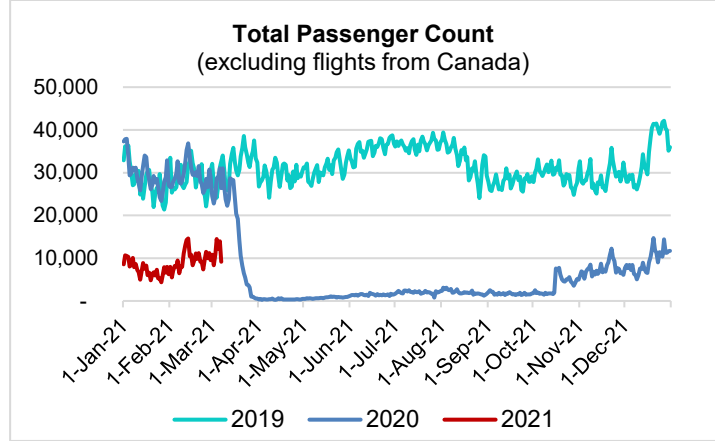
HTA COVID-19 UPDATE

(Issued: 3/8/21 @ 4:30pm)

| Reason for Trip by Arrival Airport - Transpacific Screened Passengers as of 03/07/21 | Honolulu (HNL) | Kahului (OGG) | Kona (KOA) | Hilo (ITO) | Lihue (LIH) | Grand Total |
|--|----------------|---------------|--------------|------------|-------------|--------------|
| Airline Crew | 414 | 182 | 112 | 0 | 6 | 714 |
| Connecting Flight (Transit) | 383 | 11 | 5 | 0 | 0 | 399 |
| Corporate Meeting | 6 | 0 | 0 | 0 | 0 | 6 |
| Essential Worker | 93 | 19 | 19 | 0 | 1 | 132 |
| Honeymoon | 6 | 5 | 0 | 0 | 0 | 11 |
| Incentive Trip | 1 | 0 | 0 | 0 | 0 | 1 |
| Intended Resident | 114 | 25 | 24 | 0 | 3 | 166 |
| Military or Federal Government | 133 | 0 | 0 | 0 | 1 | 134 |
| Other | 50 | 10 | 19 | 0 | 2 | 81 |
| Other Business | 44 | 14 | 9 | 0 | 0 | 67 |
| Pleasure/Vacation | 1,894 | 2,542 | 949 | 0 | 26 | 5,411 |
| Returning Resident | 735 | 118 | 95 | 0 | 17 | 965 |
| Sports Event | 2 | 0 | 0 | 0 | 0 | 2 |
| To Attend School | 18 | 0 | 0 | 0 | 0 | 18 |
| To Get Married | 1 | 3 | 2 | 0 | 0 | 6 |
| Transit | 1 | 0 | 0 | 0 | 0 | 1 |
| Visiting Friends or Relatives | 768 | 236 | 164 | 0 | 10 | 1,178 |
| Grand Total | 4,663 | 3,165 | 1,398 | 0 | 66 | 9,292 |

Source: Safe Travels program developed by the State of Hawaii Office of Enterprise Technology Services

Note: The data is preliminary and subject to change



Daily Passenger Count Table

| 03/07/2021 | Domestic | International | Total |
|------------------|----------|---------------|-------|
| Oahu | 5954 | 188 | 6142 |
| Maui | 2024 | | 2024 |
| Island of Hawaii | 990 | | 990 |
| Kauai | 49 | | 49 |
| State | 9017 | 188 | 9205 |

Novel Coronavirus in Hawaii

COVID-19 Positive Cases

Cumulative totals as of 12:00pm on March 8, 2021

| Total Confirmed Cases | 27,935* (45 new) |
|---------------------------|------------------|
| Hawaii | 2,282 |
| Kauai | 186 |
| Lanai | 108 |
| Maui | 2338† |
| Molokai | 27 |
| Oahu | 22,131 |
| Out of State | 863 |
| Pending | 0 |
| Required Hospitalization | 1904‡ |
| Hawaii Deaths | 445 |
| Cases in the past 14 days | 648* |

Footnotes for COVID-19 Cases

*As a result of updated information, one case on Oahu was removed from the counts.

**Using cases reported in the past 14 days provides a rough approximation of the number of cases currently meeting criteria for isolation. This proxy number for "active cases" resolves classification issues for cases unable to be reached or who are out of jurisdiction, for whom precise release from isolation date may not be possible to determine. It is also not influenced by lags in data entry. (This total does not include Hawaii residents diagnosed outside of Hawaii)

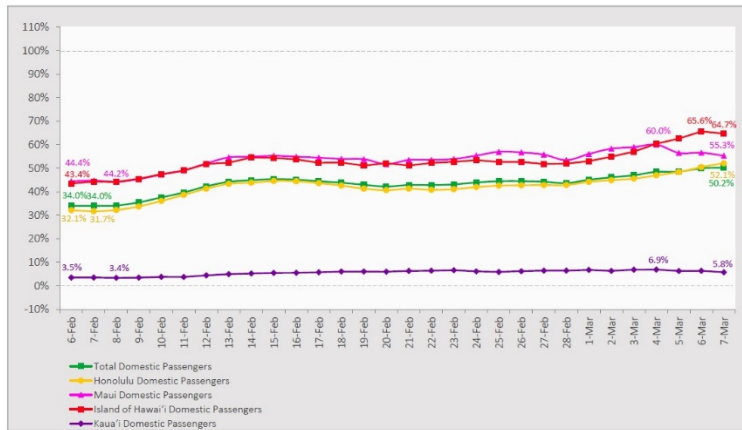
†One case is a Lanai resident whose exposure is on Maui Island and who will be remaining on Maui Island for the interim.

‡Includes Hawaii residents hospitalized out of state.

§Includes cases that meet isolation release criteria (Isolation should be maintained until at least 24 hours after resolution of fever and myalgia without the use of antipyretics OR at least 10 days have passed since symptom onset, whichever is longer). (The cases that have died and one case that has left the jurisdiction have been removed from these counts). Positive cases include confirmed cases, and Hawaii residents and non-residents; data are preliminary and subject to change. Note that CDC provides case counts according to states of residence.

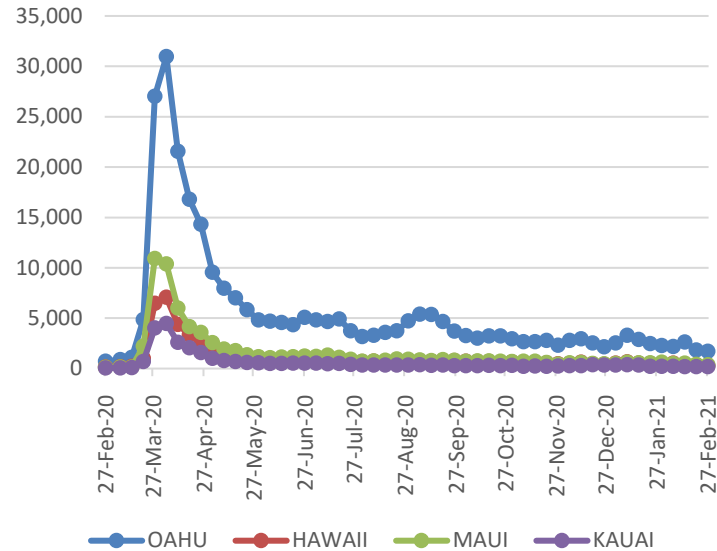
7-Day Domestic by Island Moving Average Daily Passenger Volume

2021 Volume as Percentage of 2020 Volume
Through March 7, 2021



Source: HVCB analysis based on data from DBEDT
Note: Passenger volume figures include both visitors and residents.

2021 Initial Weekly Unemployment Claims by Island



Domestic by Island Month-to-Date and Year-to-Date Daily Passenger Volume

2021 Volume versus 2020 Volume
Through March 7, 2021

March 2021 (Month-to-Date through March 7)

| | 2021 | 2020 | Volume Change | Percent Change |
|-------------------|---------------|----------------|----------------|----------------|
| Honolulu | 43,146 | 83,395 | -40,249 | -48.3% |
| Maui County | 22,042 | 40,456 | -18,414 | -45.5% |
| Island of Hawai'i | 12,144 | 19,114 | -6,970 | -36.5% |
| Kaua'i | 822 | 14,153 | -13,331 | -94.2% |
| Total | 78,154 | 157,118 | -78,964 | -50.3% |

2021 (Year-to-Date through March 7)

| | 2021 | 2020 | Volume Change | Percent Change |
|-------------------|----------------|------------------|-----------------|----------------|
| Honolulu | 304,815 | 820,389 | -515,574 | -62.8% |
| Maui County | 170,046 | 381,621 | -211,575 | -55.4% |
| Island of Hawai'i | 81,837 | 184,645 | -102,808 | -55.7% |
| Kaua'i | 5,529 | 127,898 | -122,369 | -95.7% |
| Total | 562,227 | 1,514,553 | -952,326 | -62.9% |

Source: HVCB analysis based on data from DBEDT
Note: Passenger volume figures include both visitors and residents. Total includes other international passengers. 2020 includes one additional day due to Leap Year (February 29th, 2020).

Weekly Unemployment Initial Claims: February 27, 2021

| | |
|--|--------------|
| State of Hawaii | 2,684 |
| C&C of Oahu | 1,708 |
| Honolulu | 675 |
| Kaneohe | 176 |
| Waipahu | 857 |
| Hawaii County | 282 |
| Hilo | 168 |
| Kona | 115 |
| Maui County | 348 |
| Wailuku | 369 |
| Molokai | 15 |
| Kauai County | 196 |
| Agent (filed in Hawaii against another state) | 114 |

News Highlights

March 8, 2021

KHON2: [70 to 74 group to start vaccinations Monday, younger ages soon to follow](#)

Hawaii News Now: DOH: [Residents will soon be able to choose which vaccine they want at specific sites](#)

Hawaii Tribune-Herald: [\\$1.8M for travel: Federal grants prop up county travel budgets](#)

Hawaii Magazine: [A Year Later: How COVID-19 Has Affected Hawaii](#)

Honolulu Magazine: [A COVID-19 Timeline: How Honolulu Got To This Point](#)

Hawaii Public Radio: [Better Days Coming for Tourism?](#)

The Garden Island: [Hawaii hotel leaders, union push for vaccine eligibility](#)

Travel Pulse: [COVID-19 US Travel Restrictions: State-by-State Guide for March 2021](#)

New York Times: [In Hawaii, Reimagining Tourism for a Post-Pandemic World](#)

Helpful Resources

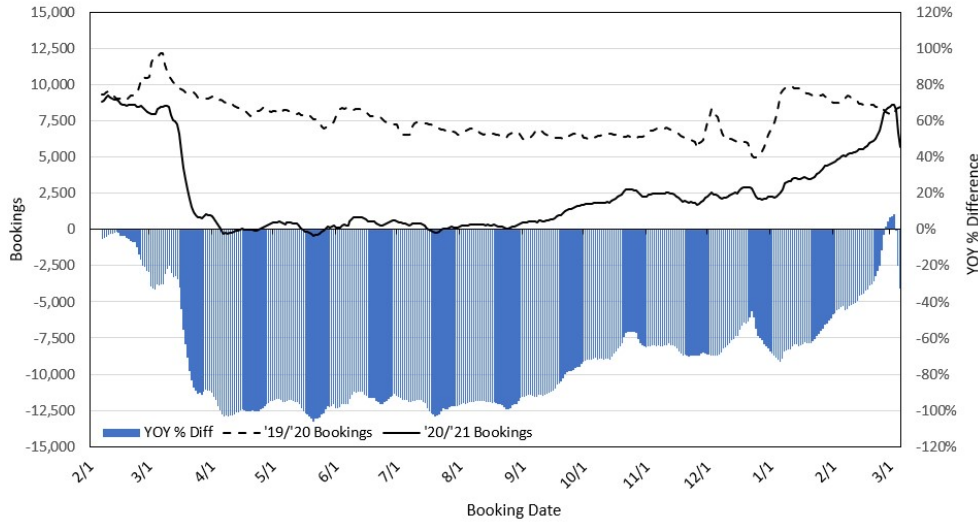
Department of Health
<https://hawaiiicovid19.com/>

Hawaii Tourism Authority
<https://www.hawaiitourismauthority.org/covid-19-updates/>

Dept. of Business, Economic Development & Tourism
<https://dbedt.hawaii.gov/economic/covid19/>

Department of Transportation
<https://hidot.hawaii.gov/coronavirus/>

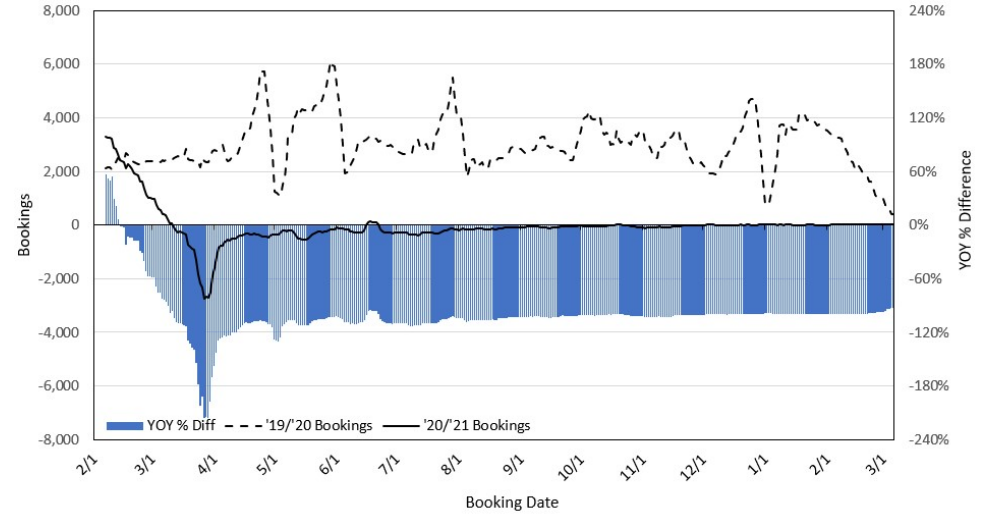
Travel Agency Bookings to Hawaii for Future Arrivals*
Based on a 7-day Moving Average as of March 6, 2021
U.S.



*Future Arrivals refers to all arrivals that are 'future' relative to the referenced booking date.
 Source: Global Agency Pro

Update: Mar 6, 2021

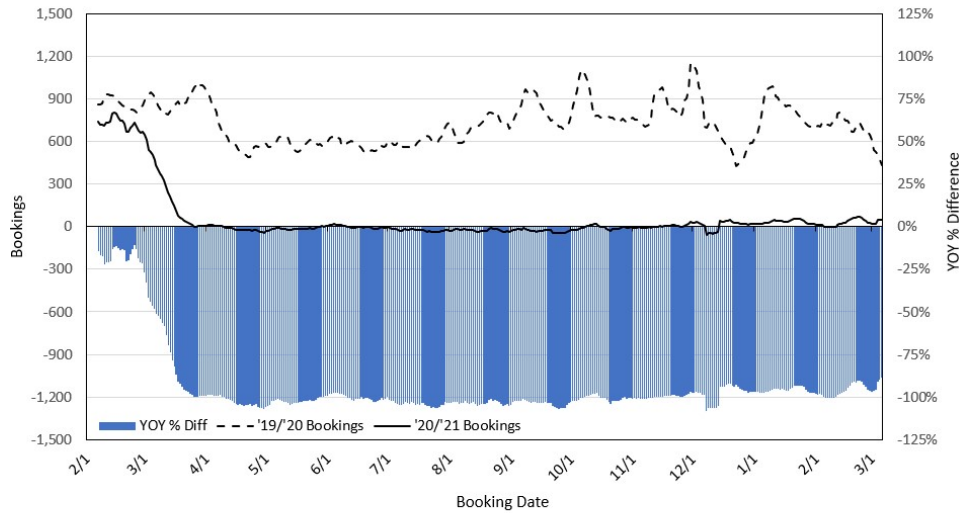
Travel Agency Bookings to Hawaii for Future Arrivals*
Based on a 7-day Moving Average as of March 6, 2021
Japan



*Future Arrivals refers to all arrivals that are 'future' relative to the referenced booking date.
 Source: Global Agency Pro

Update: Mar 6, 2021

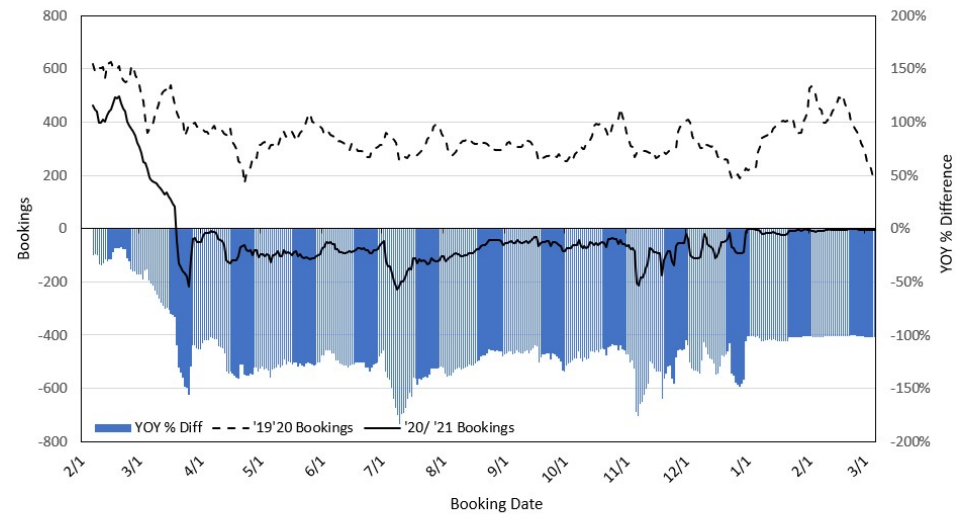
Travel Agency Bookings to Hawaii for Future Arrivals*
Based on a 7-day Moving Average as of March 6, 2021
Canada



*Future Arrivals refers to all arrivals that are 'future' relative to the referenced booking date.
 Source: Global Agency Pro

Update: Mar 6, 2021

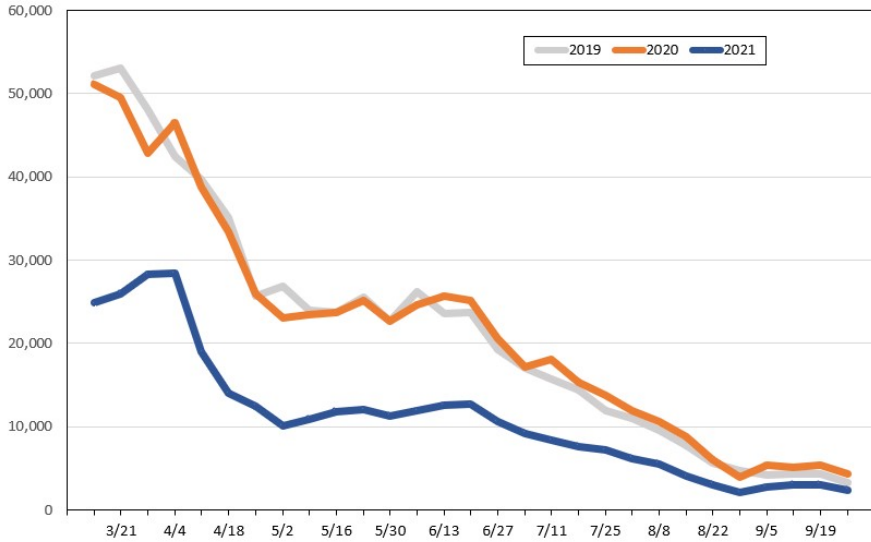
Travel Agency Bookings to Hawaii for Future Arrivals*
Based on a 7-day Moving Average as of March 6, 2021
Australia



*Future Arrivals refers to all arrivals that are 'future' relative to the referenced booking date.
 Source: Global Agency Pro

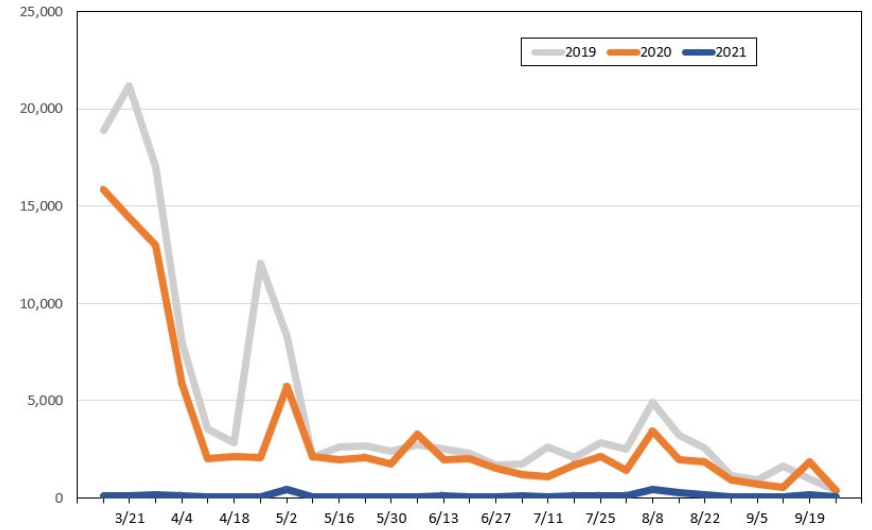
Update: Mar 6, 2021

Travel Agency Weekly Bookings for Future Travel to Hawai'i as of March 6, 2021
U.S.



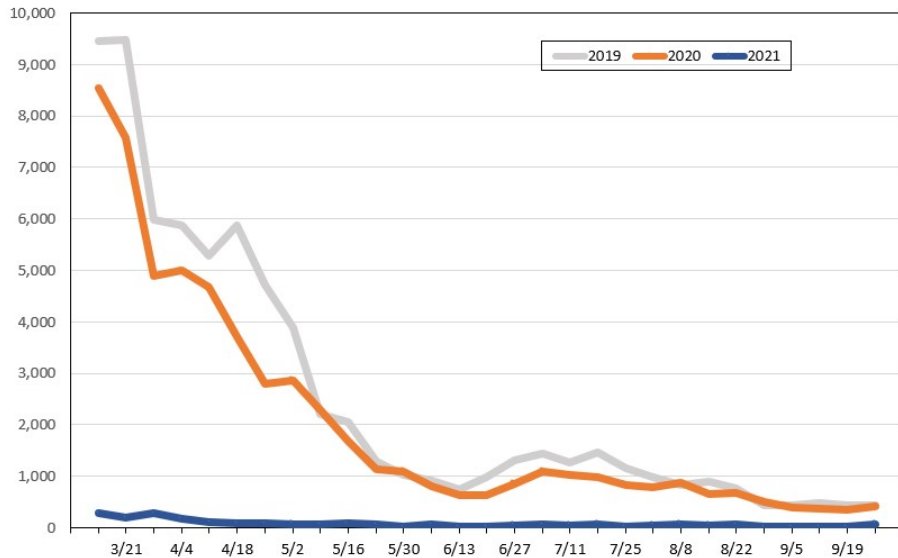
Source: Global Agency Pro, as of March 6, 2021

Travel Agency Weekly Bookings for Future Travel to Hawai'i as of March 6, 2021
Japan



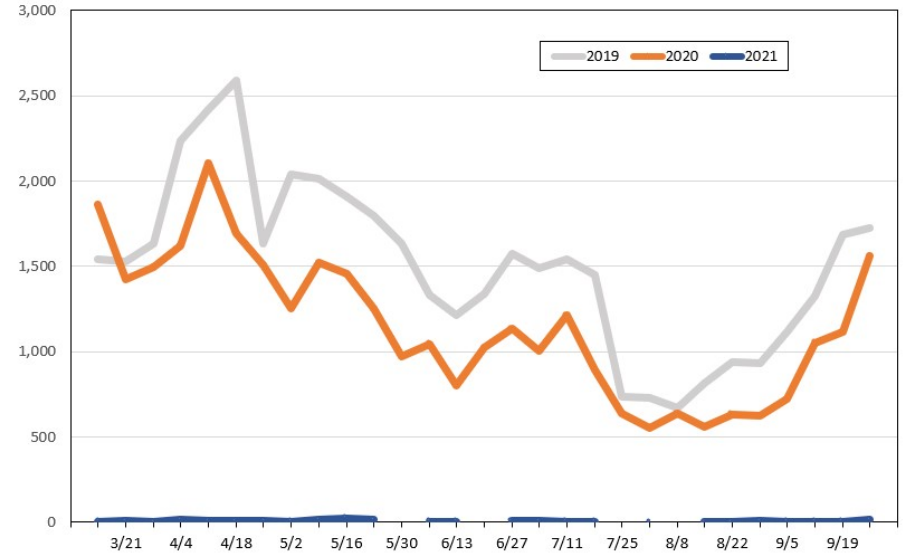
Source: Global Agency Pro, as of March 6, 2021

Travel Agency Weekly Bookings for Future Travel to Hawai'i as of March 6, 2021
Canada



Source: Global Agency Pro, as of March 6, 2021

Travel Agency Weekly Bookings for Future Travel to Hawai'i as of March 6, 2021
Australia



Source: Global Agency Pro, as of March 6, 2021