

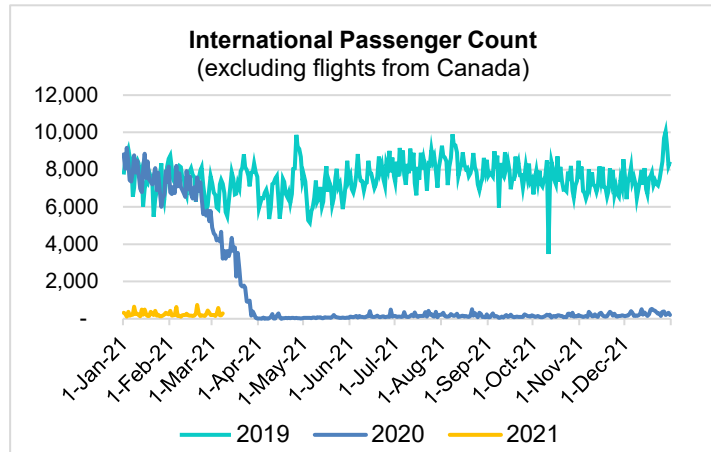
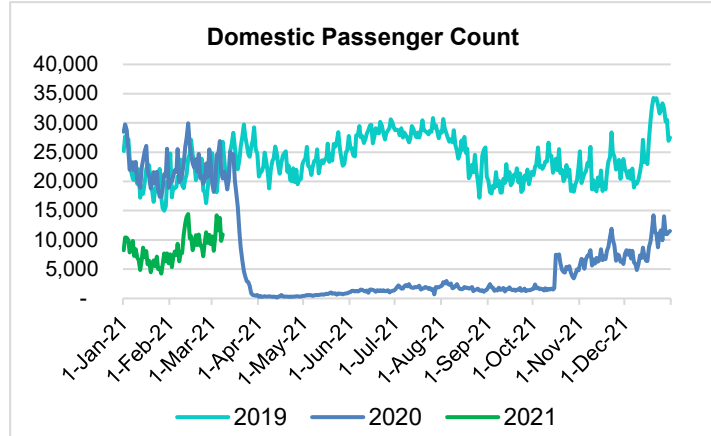
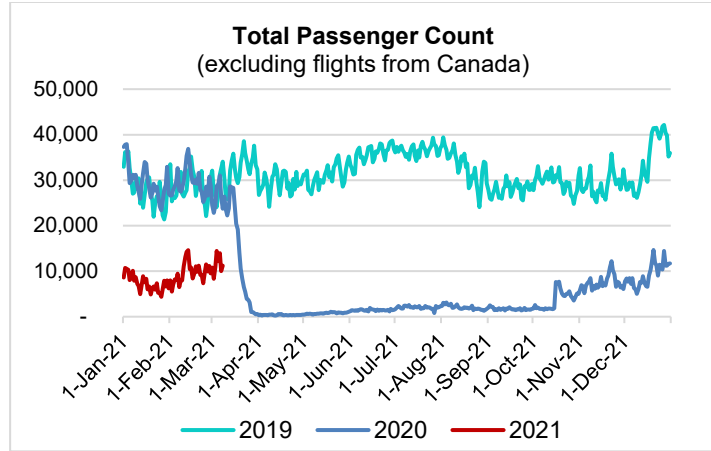
HTA COVID-19 UPDATE

(Issued: 3/9/21 @ 4:30pm)

Reason for Trip by Arrival Airport - Transpacific Screened Passengers as of 03/08/21	Honolulu (HNL)	Kahului (OGG)	Kona (KOA)	Hilo (ITO)	Lihue (LIH)	Grand Total
Airline Crew	416	234	110	0	15	775
Connecting Flight (Transit)	446	17	2	0	0	465
Corporate Meeting	17	3	2	0	0	22
Essential Worker	109	27	9	0	4	149
Honeymoon	31	30	1	0	0	62
Incentive Trip	3	1	2	0	0	6
Intended Resident	78	30	24	0	3	135
Military or Federal Government	94	0	0	0	1	95
Other	50	22	10	0	0	82
Other Business	96	27	28	0	0	151
Pleasure/Vacation	3,068	3,076	1,090	0	82	7,316
Returning Resident	1,132	215	138	0	16	1,501
Sports Event	3	0	0	0	0	3
To Attend School	21	1	0	0	0	22
To Get Married	3	6	0	0	0	9
Visiting Friends or Relatives	916	237	168	0	24	1,345
Grand Total	6,483	3,926	1,584	0	145	12,138

Source: Safe Travels program developed by the State of Hawaii Office of Enterprise Technology Services

Note: The data is preliminary and subject to change



Daily Passenger Count Table

03/08/2021	Domestic	International	Total
Oahu	5934	287	6221
Maui	3491		3491
Island of Hawaii	1398		1398
Kauai	120		120
State	10943	287	11230

Novel Coronavirus in Hawaii

COVID-19 Positive Cases

Cumulative totals as of 12:00pm on March 9, 2021

Total Confirmed Cases	27,977* (42 new)
Hawaii	2,289
Kauai	186
Lanai	108
Maui	2356†
Molokai	27
Oahu	22,147
Out of State	864
Pending	0
Required Hospitalization	1905‡
Hawaii Deaths	445
Cases in the past 14 days	645*

Footnotes for COVID-19 Cases

*

**Using cases reported in the past 14 days provides a rough approximation of the number of cases currently meeting criteria for isolation. This proxy number for "active cases" resolves classification issues for cases unable to be reached or who are out of jurisdiction, for whom precise release from isolation date may not be possible to determine. It is also not influenced by lags in data entry. (This total does not include Hawaii residents diagnosed outside of Hawaii)

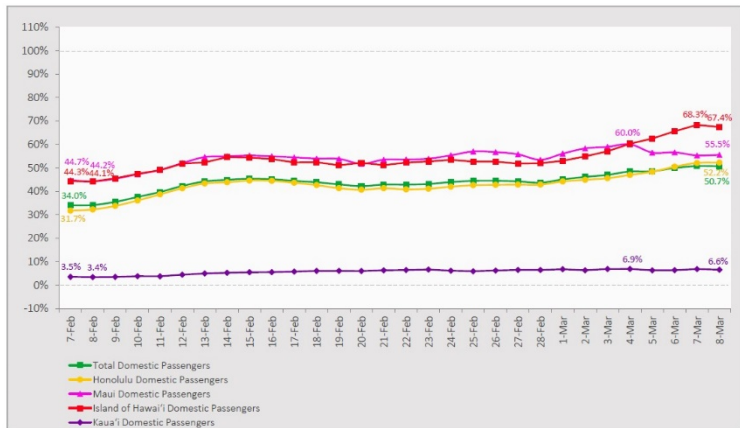
†One case is a Lanai resident whose exposure is on Maui Island and who will be remaining on Maui Island for the interim.

‡Includes Hawaii residents hospitalized out of state.

§Includes cases that meet isolation release criteria (Isolation should be maintained until at least 24 hours after resolution of fever and myalgia without the use of antipyretics OR at least 10 days have passed since symptom onset, whichever is longer). (The cases that have died and one case that has left the jurisdiction have been removed from these counts). Positive cases include confirmed cases, and Hawaii residents and non-residents; data are preliminary and subject to change. Note that CDC provides case counts according to states of residence.

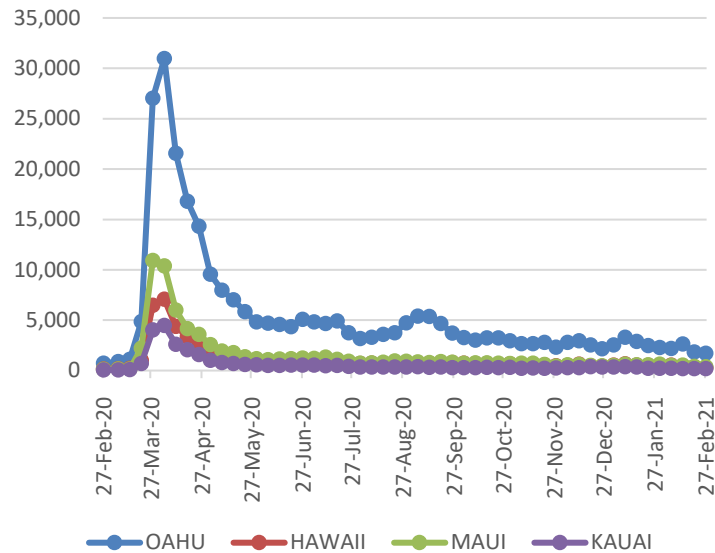
7-Day Domestic by Island Moving Average Daily Passenger Volume

2021 Volume as Percentage of 2020 Volume
Through March 8, 2021



Source: HVCB analysis based on data from DBEDT
Note: Passenger volume figures include both visitors and residents.

2021 Initial Weekly Unemployment Claims by Island



Domestic by Island Month-to-Date and Year-to-Date Daily Passenger Volume

2021 Volume versus 2020 Volume
Through March 8, 2021

March 2021 (Month-to-Date through March 8)

	2021	2020	Volume Change	Percent Change
Honolulu	49,080	95,396	-46,316	-48.6%
Maui County	25,533	46,068	-20,535	-44.6%
Island of Hawai'i	14,213	21,367	-7,154	-33.5%
Kaua'i	1,091	16,006	-14,915	-93.2%
Total	89,917	178,837	-88,920	-49.7%

2021 (Year-to-Date through March 8)

	2021	2020	Volume Change	Percent Change
Honolulu	310,749	832,390	-521,641	-62.7%
Maui County	173,537	387,233	-213,696	-55.2%
Island of Hawai'i	83,906	186,898	-102,992	-55.1%
Kaua'i	5,798	129,751	-123,953	-95.5%
Total	573,990	1,536,272	-962,282	-62.6%

Source: HVCB analysis based on data from DBEDT
Note: Passenger volume figures include both visitors and residents. Total includes other international passengers. 2020 includes one additional day due to Leap Year (February 29th, 2020).

Weekly Unemployment Initial Claims: February 27, 2021

State of Hawaii	2,684
C&C of Oahu	1,708
Honolulu	675
Kaneohe	176
Waipahu	857
Hawaii County	282
Hilo	168
Kona	115
Maui County	348
Wailuku	369
Molokai	15
Kauai County	196
Agent (filed in Hawaii against another state)	114

News Highlights

March 9, 2021

KHON2: [CDC releases COVID guidelines for those fully vaccinated](#)

KITV4: [Big Island gets approval to ease certain COVID-19 restrictions](#)

KHON2: [Kauai gets approval to rejoin Hawaii's Safe Travels program in April](#)

West Hawaii Today: Ige: ['Vaccine passport' program unlikely until May](#)

Hawaii News Now: [A 150-person luau sparks frustration for businesses still hobbled by COVID restrictions](#)

Hawaii News Now: [Hawaii plans brand-specific vaccination sites to allow people to pick their shot](#)

Hawaii Tribune-Herald: [Hawaiian newspapers re-digitized to preserve knowledge](#)

Hawaii Tribune-Herald: [Resolutions urge Ige to ease travel quarantine on vaccinated persons](#)

The Garden Island: ['South African variant' detected on Oahu](#)

Helpful Resources

Department of Health
<https://hawaiiicovid19.com/>

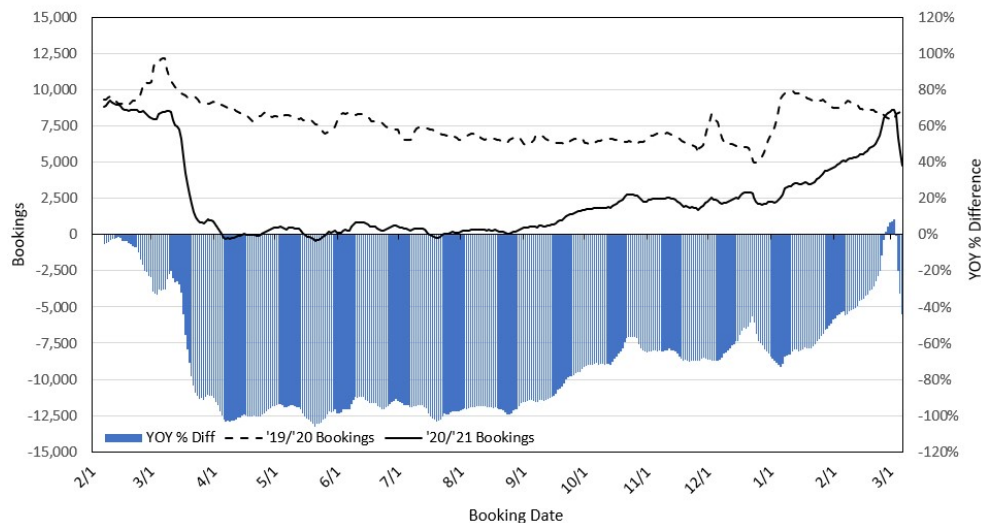
Hawaii Tourism Authority
<https://www.hawaiitourismauthority.org/covid-19-updates/>

Dept. of Business, Economic Development & Tourism
<https://dbedt.hawaii.gov/economic/covid19/>

Department of Transportation
<https://hidot.hawaii.gov/coronavirus/>

**Travel Agency Bookings to Hawaii for Future Arrivals*
Based on a 7-day Moving Average as of March 7, 2021**

U.S.

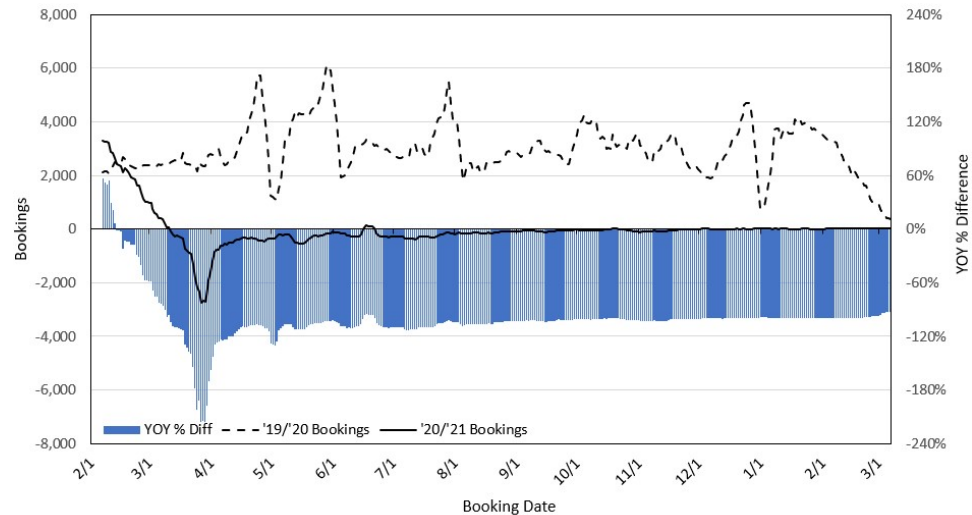


*Future Arrivals refers to all arrivals that are 'future' relative to the referenced booking date.
Source: Global Agency Pro

Update: Mar 7, 2021

**Travel Agency Bookings to Hawaii for Future Arrivals*
Based on a 7-day Moving Average as of March 7, 2021**

Japan

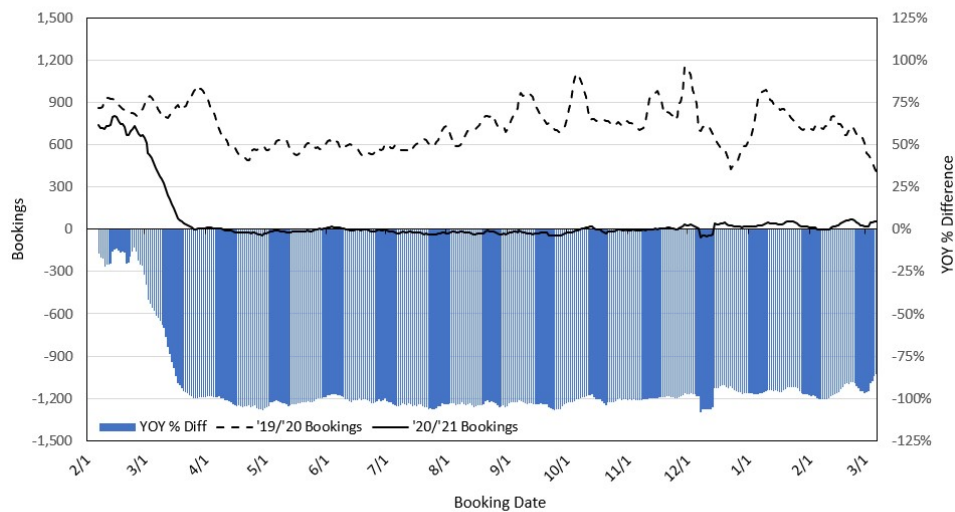


*Future Arrivals refers to all arrivals that are 'future' relative to the referenced booking date.
Source: Global Agency Pro

Update: Mar 7, 2021

**Travel Agency Bookings to Hawaii for Future Arrivals*
Based on a 7-day Moving Average as of March 7, 2021**

Canada

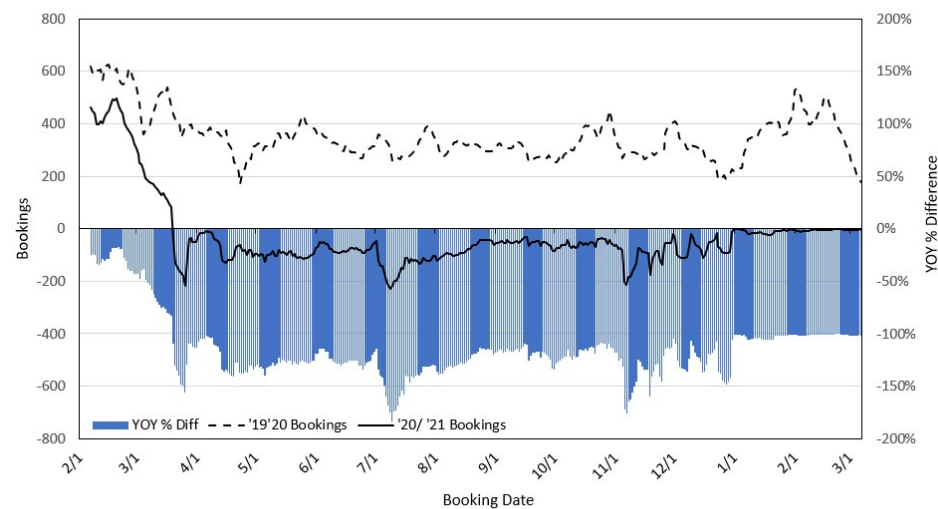


*Future Arrivals refers to all arrivals that are 'future' relative to the referenced booking date.
Source: Global Agency Pro

Update: Mar 7, 2021

**Travel Agency Bookings to Hawaii for Future Arrivals*
Based on a 7-day Moving Average as of March 7, 2021**

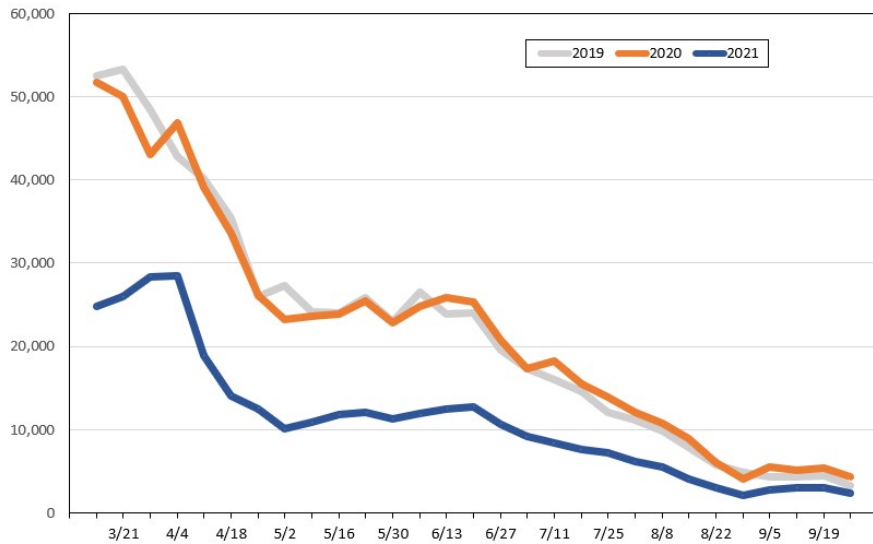
Australia



*Future Arrivals refers to all arrivals that are 'future' relative to the referenced booking date.
Source: Global Agency Pro

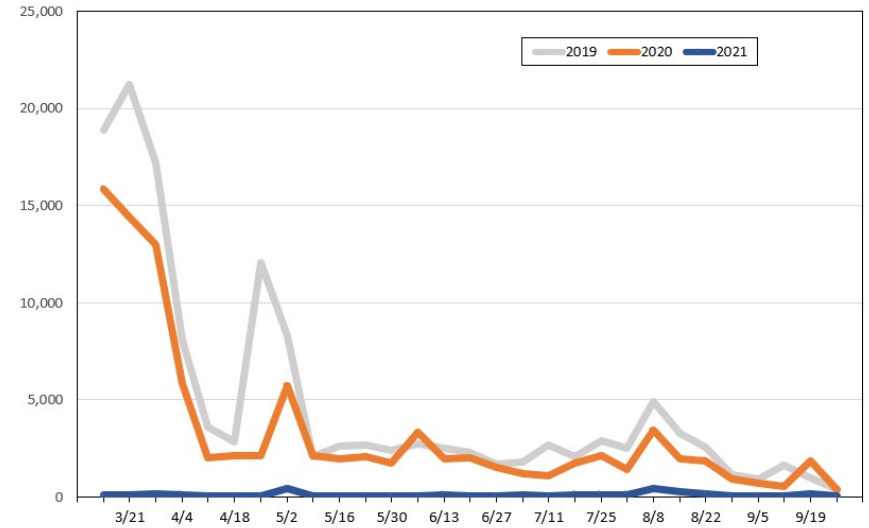
Update: Mar 7, 2021

Travel Agency Weekly Bookings for Future Travel to Hawai'i as of March 7, 2021
U.S.



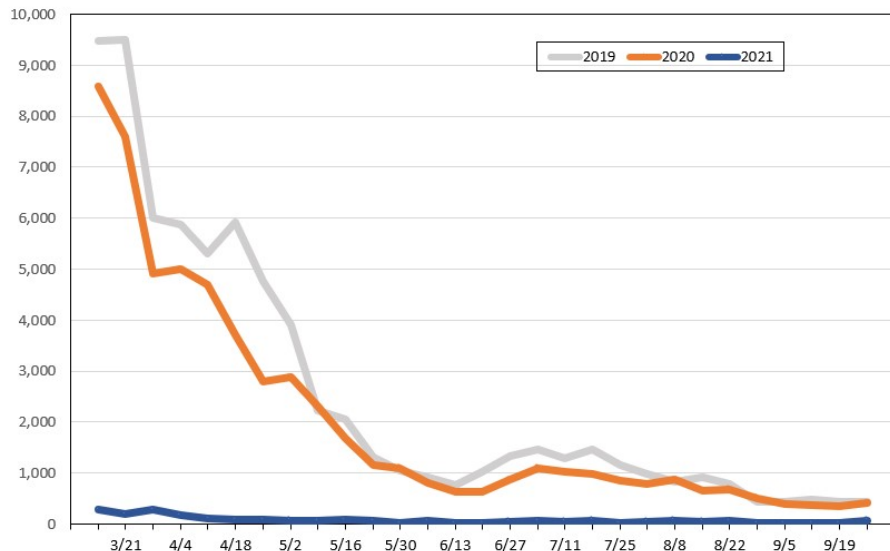
Source: Global Agency Pro, as of March 7, 2021

Travel Agency Weekly Bookings for Future Travel to Hawai'i as of March 7, 2021
Japan



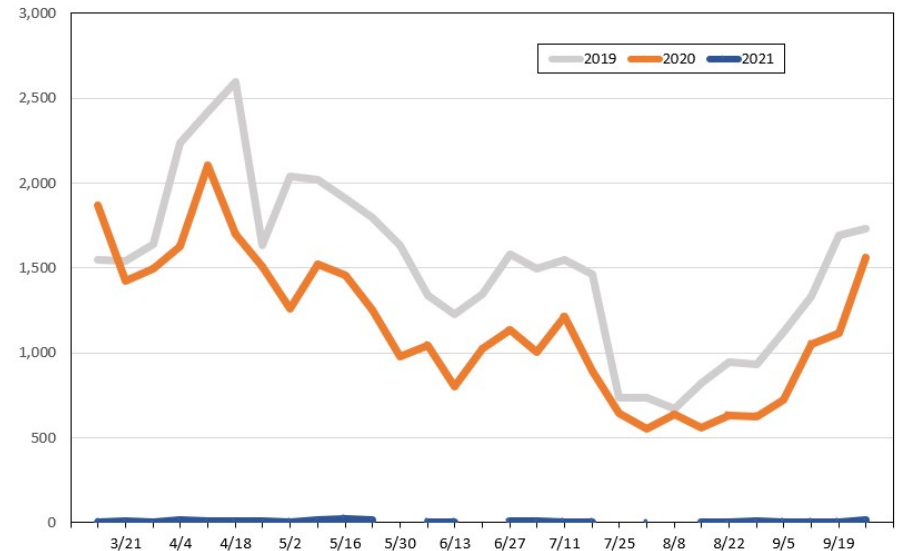
Source: Global Agency Pro, as of March 7, 2021

Travel Agency Weekly Bookings for Future Travel to Hawai'i as of March 7, 2021
Canada



Source: Global Agency Pro, as of March 7, 2021

Travel Agency Weekly Bookings for Future Travel to Hawai'i as of March 7, 2021
Australia



Source: Global Agency Pro, as of March 7, 2021