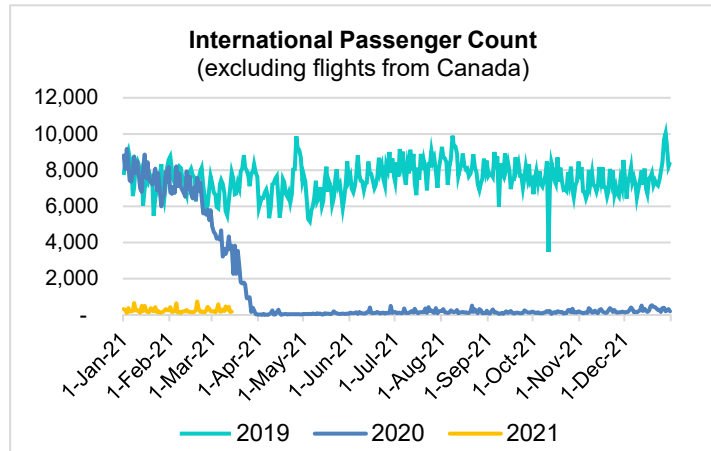
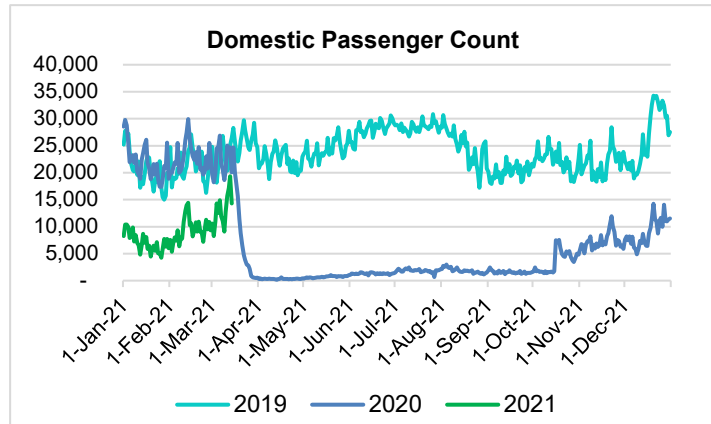
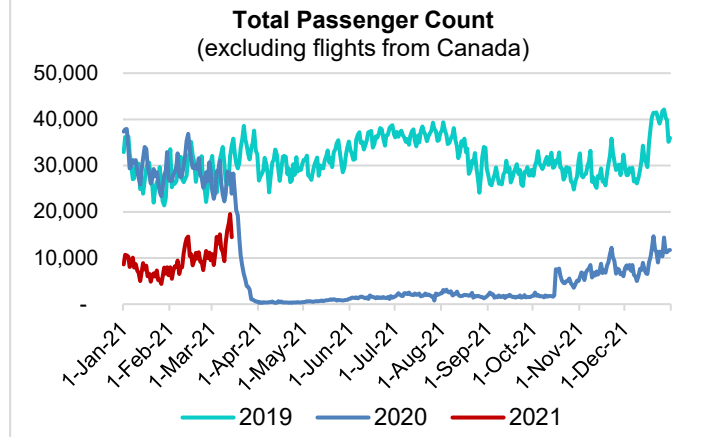


# HTA COVID-19 UPDATE

(Issued: 3/15/21 @ 4:30pm)

Reason for Trip by Arrival Airport - Transpacific Screened Passengers as of 03/14/21	Honolulu (HNL)	Kahului (OGG)	Kona (KOA)	Hilo (ITO)	Lihue (LIH)	Grand Total
Airline Crew	482	250	121	0	18	871
Connecting Flight (Transit)	313	45	6	0	0	364
Corporate Meeting	10	7	1	0	0	18
Essential Worker	178	22	25	0	6	231
Honeymoon	14	19	8	0	0	41
Incentive Trip	2	3	0	0	0	5
Intended Resident	61	11	8	0	0	80
Military or Federal Government	118	4	0	0	4	126
Other	72	14	11	0	1	98
Other Business	97	39	37	0	2	175
Pleasure/Vacation	4,173	4,192	1,818	0	78	10,261
Returning Resident	1,351	171	123	0	16	1,661
To Attend School	16	1	1	0	0	18
To Get Married	6	2	2	0	0	10
Visiting Friends or Relatives	1,100	283	248	0	17	1,648
<b>Grand Total</b>	<b>7,993</b>	<b>5,063</b>	<b>2,409</b>	<b>0</b>	<b>142</b>	<b>15,607</b>

Source: Safe Travels program developed by the State of Hawaii Office of Enterprise Technology Services  
 Note: The data is preliminary and subject to change



## Daily Passenger Count Table

03/14/2021	Domestic	International	Total
Oahu	7468	179	8365
Maui	4530		4880
Island of Hawaii	2168		2312
Kauai	121		122
State	14287	179	15679

## Novel Coronavirus in Hawaii

### COVID-19 Positive Cases

Cumulative totals as of 12:00pm on March 15, 2021

Total Confirmed Cases	28,305* (46 new)
Hawaii	2,335
Kauai	186
Lanai	108
Maui	2458†
Molokai	28
Oahu	22,313
Out of State	877
Pending	0
Required Hospitalization	1932‡
Hawaii Deaths	451
Cases in the past 14 days	693*

## Footnotes for COVID-19 Cases

\*As a result of updated information, two cases on Oahu were removed from the counts.

\*\*Using cases reported in the past 14 days provides a rough approximation of the number of cases currently meeting criteria for isolation. This proxy number for "active cases" resolves classification issues for cases unable to be reached or who are out of jurisdiction, for whom precise release from isolation date may not be possible to determine. It is also not influenced by lags in data entry. (This total does not include Hawaii residents diagnosed outside of Hawaii)

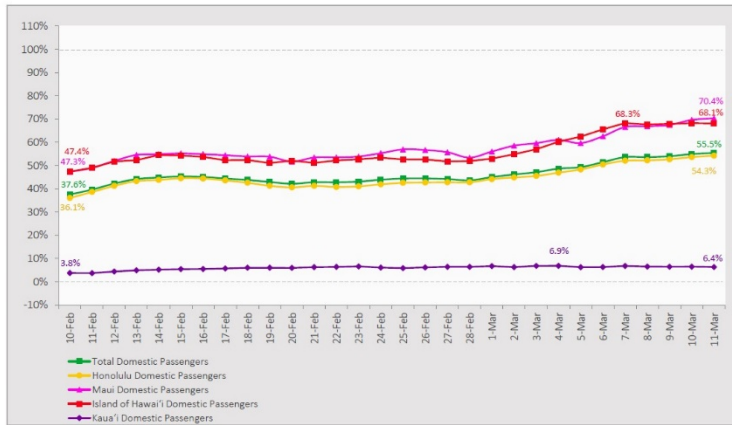
†One case is a Lanai resident whose exposure is on Maui Island and who will be remaining on Maui Island for the interim.

‡Includes Hawaii residents hospitalized out of state.

§Includes cases that meet isolation release criteria (Isolation should be maintained until at least 24 hours after resolution of fever and myalgia without the use of antipyretics OR at least 10 days have passed since symptom onset, whichever is longer). (The cases that have died and one case that has left the jurisdiction have been removed from these counts). Positive cases include confirmed cases, and Hawaii residents and non-residents; data are preliminary and subject to change. Note that CDC provides case counts according to states of residence.

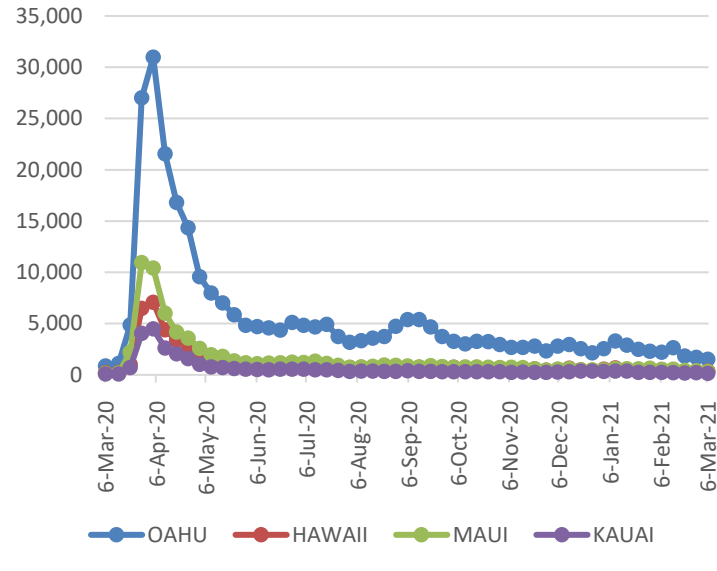
### 7-Day Domestic by Island Moving Average Daily Passenger Volume

2021 Volume as Percentage of 2020 Volume  
Through March 11, 2021



Source: HVCB analysis based on data from DBEDT  
Note: Passenger volume figures include both visitors and residents.

### 2021 Initial Weekly Unemployment Claims by Island



### Domestic by Island Month-to-Date and Year-to-Date Daily Passenger Volume

2021 Volume versus 2020 Volume  
Through March 11, 2021

March 2021 (Month-to-Date through March 11)

	2021	2020	Volume Change	Percent Change
Honolulu	68,715	129,119	-60,404	-46.8%
Maui County	41,750	58,317	-16,567	-28.4%
Island of Hawai'i	19,869	29,113	-9,244	-31.8%
Kaua'i	1,372	21,840	-20,468	-93.7%
<b>Total</b>	<b>131,706</b>	<b>238,389</b>	<b>-106,683</b>	<b>-44.8%</b>

2021 (Year-to-Date through March 11)

	2021	2020	Volume Change	Percent Change
Honolulu	330,384	866,113	-535,729	-61.9%
Maui County	189,754	399,482	-209,728	-52.5%
Island of Hawai'i	89,562	194,644	-105,082	-54.0%
Kaua'i	6,079	135,585	-129,506	-95.5%
<b>Total</b>	<b>615,779</b>	<b>1,595,824</b>	<b>-980,045</b>	<b>-61.4%</b>

Source: HVCB analysis based on data from DBEDT  
Note: Passenger volume figures include both visitors and residents. Total includes other international passengers. 2020 includes one additional day due to Leap Year (February 29th, 2020).

### Weekly Unemployment Initial Claims: March 6, 2021

<b>State of Hawaii</b>	<b>2,483</b>
<b>C&amp;C of Oahu</b>	<b>1,512</b>
Honolulu	640
Kaneohe	138
Waipahu	734
<b>Hawaii County</b>	<b>354</b>
Hilo	230
Kona	124
<b>Maui County</b>	<b>323</b>
Wailuku	313
Molokai	10
<b>Kauai County</b>	<b>131</b>
<b>Agent (filed in Hawaii against another state)</b>	<b>163</b>

### News Highlights

March 15, 2021

**Honolulu Star Advertiser:**

[Honolulu Mayor Rick Blangiardi to discuss modifications to Tier 3 reopening plan](#)

**KHON2:** [How long after the second dose of the COVID vaccine is it effective?](#)

**West Hawaii Today:** [Walk-in clinic draws hundreds](#)

**The Maui News:** [Tourism plan focuses on quality, not quantity](#)

**Business Insider:** [As the US vaccine rollout ramps up, here's who's next in line: younger adults, restaurant employees, and grocery workers](#)

**Forbes:** [3 Fully Vaccinated People Catch Covid-19 Coronavirus, Says Hawaii DOH](#)

**Los Angeles Times:** [What travelers need to know now about testing and vaccine records. Paper won't cut it](#)

**Travel Pulse:** [CDC Won't Release Travel Guidance for Vaccinated Americans Just Yet](#)

**Fodor's Travel:** [I Planned to Move to Hawaii. And Then I Realized Why I Shouldn't](#)

### Helpful Resources

**Department of Health**  
<https://hawaiiicovid19.com/>

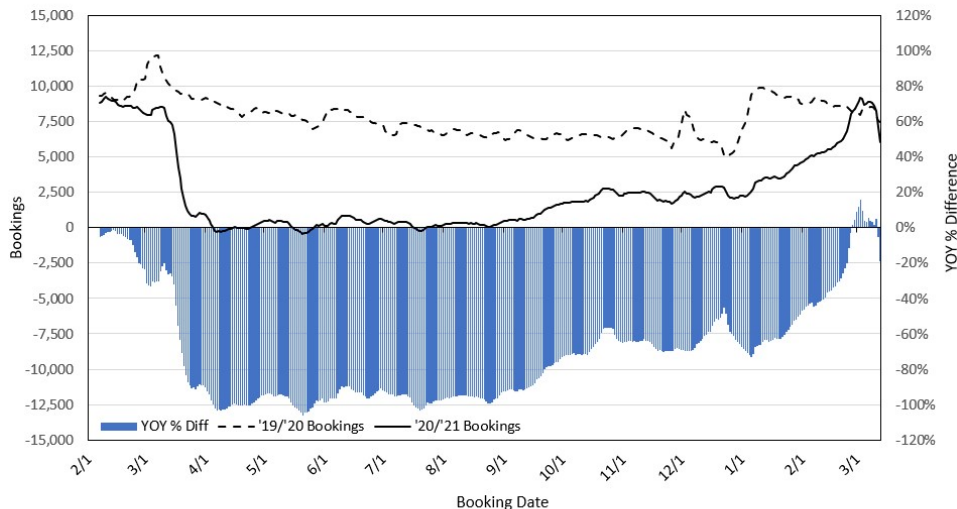
**Hawaii Tourism Authority**  
<https://www.hawaiitourismauthority.org/covid-19-updates/>

**Dept. of Business, Economic Development & Tourism**  
<https://dbedt.hawaii.gov/economic/covid19/>

**Department of Transportation**  
<https://hidot.hawaii.gov/coronavirus/>

**Travel Agency Bookings to Hawaii for Future Arrivals\*  
Based on a 7-day Moving Average as of March 13, 2021**

**U.S.**

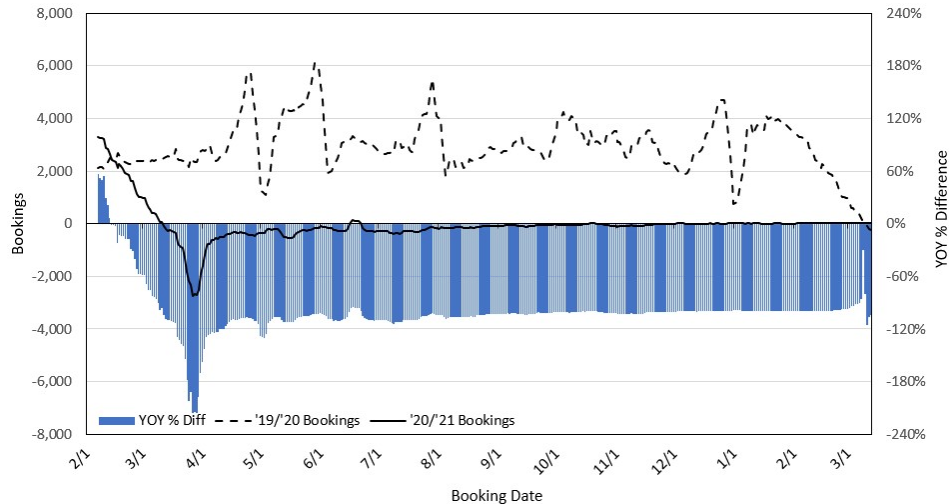


\*Future Arrivals refers to all arrivals that are 'future' relative to the referenced booking date.  
Source: Global Agency Pro

Update: Mar 13, 2021

**Travel Agency Bookings to Hawaii for Future Arrivals\*  
Based on a 7-day Moving Average as of March 13, 2021**

**Japan**

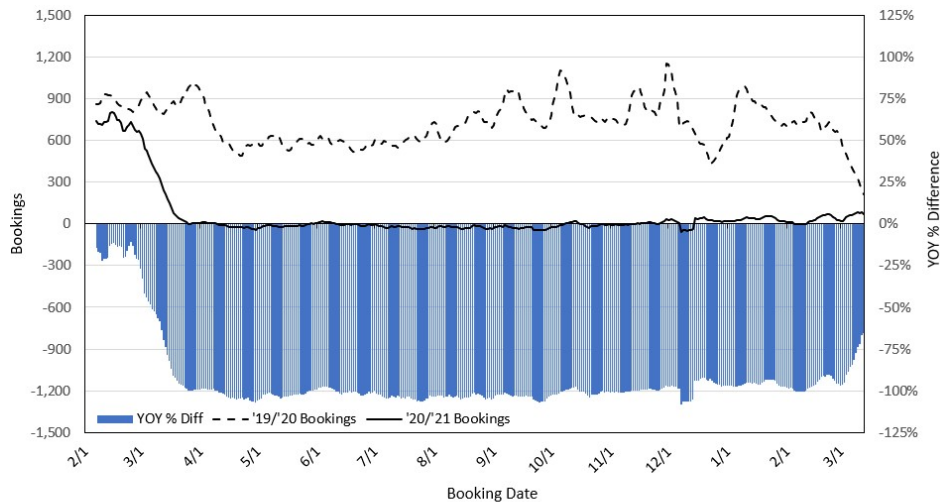


\*Future Arrivals refers to all arrivals that are 'future' relative to the referenced booking date.  
Source: Global Agency Pro

Update: Mar 13, 2021

**Travel Agency Bookings to Hawaii for Future Arrivals\*  
Based on a 7-day Moving Average as of March 13, 2021**

**Canada**

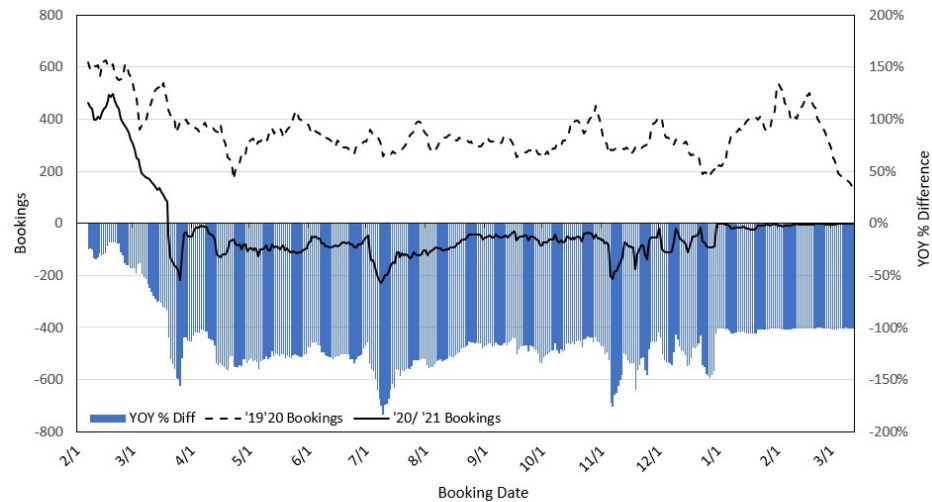


\*Future Arrivals refers to all arrivals that are 'future' relative to the referenced booking date.  
Source: Global Agency Pro

Update: Mar 13, 2021

**Travel Agency Bookings to Hawaii for Future Arrivals\*  
Based on a 7-day Moving Average as of March 13, 2021**

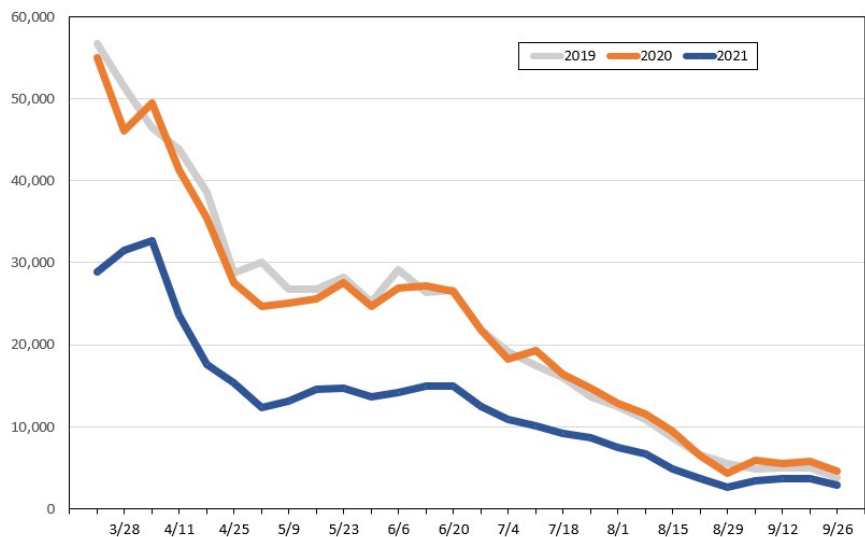
**Australia**



\*Future Arrivals refers to all arrivals that are 'future' relative to the referenced booking date.  
Source: Global Agency Pro

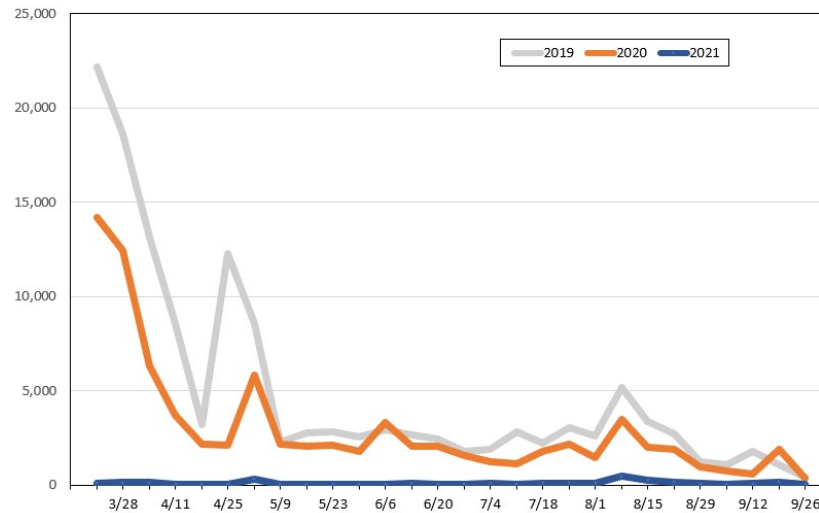
Update: Mar 13, 2021

**Travel Agency Weekly Bookings for Future Travel to Hawai'i as of March 13, 2021**  
U.S.



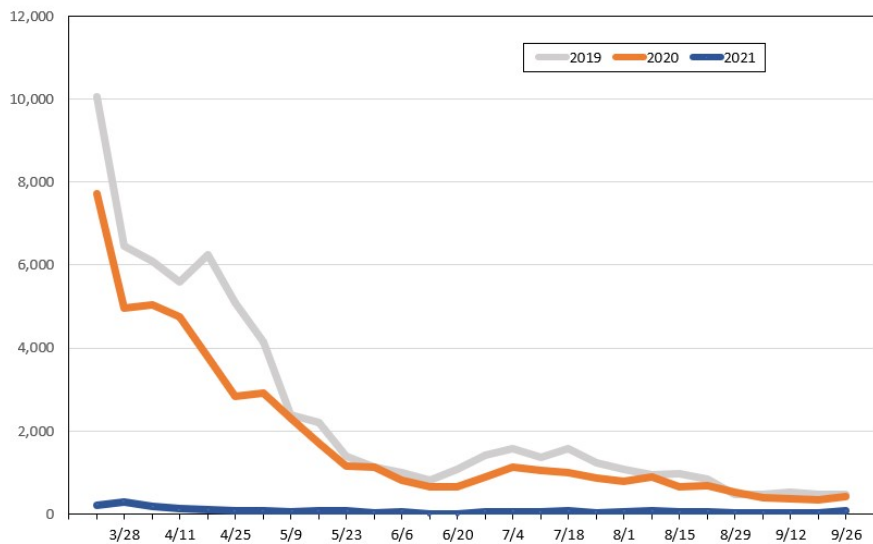
Source: Global Agency Pro, as of March 13, 2021

**Travel Agency Weekly Bookings for Future Travel to Hawai'i as of March 13, 2021**  
Japan



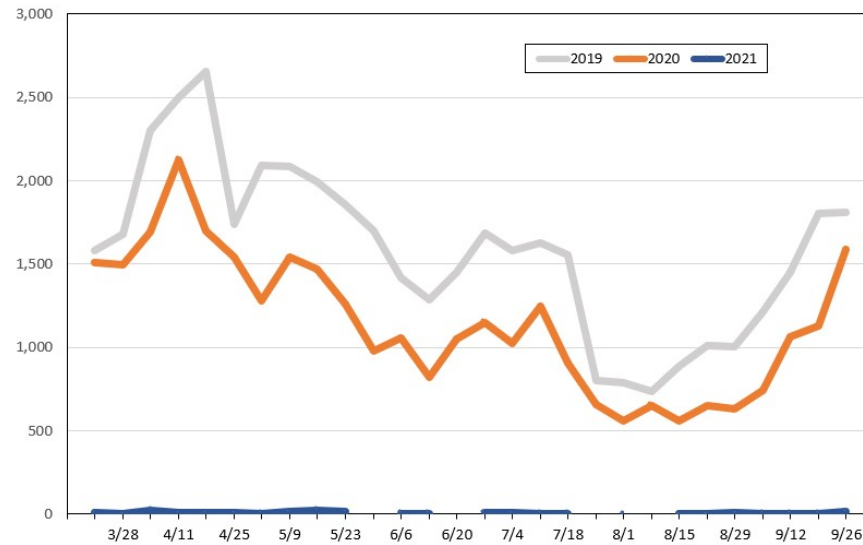
Source: Global Agency Pro, as of March 13, 2021

**Travel Agency Weekly Bookings for Future Travel to Hawai'i as of March 13, 2021**  
Canada



Source: Global Agency Pro, as of March 13, 2021

**Travel Agency Weekly Bookings for Future Travel to Hawai'i as of March 13, 2021**  
Australia



Source: Global Agency Pro, as of March 13, 2021