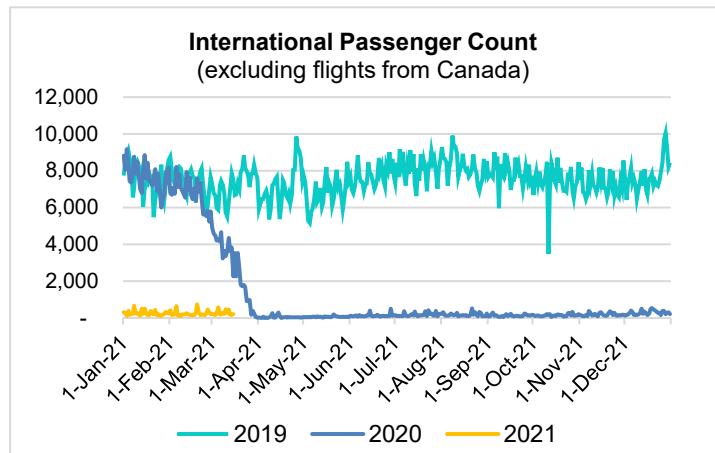
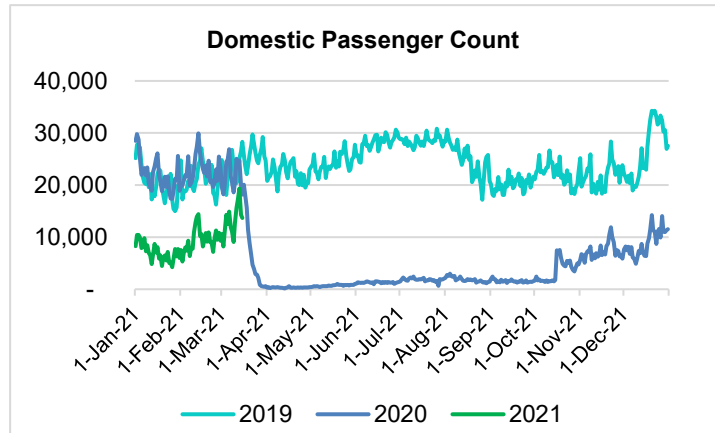
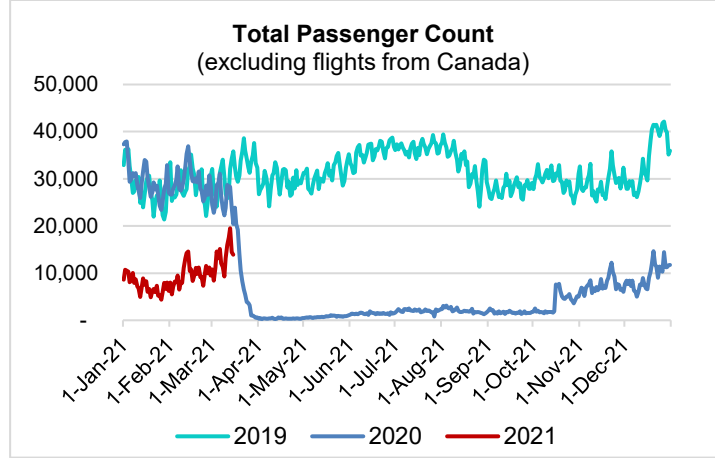


HTA COVID-19 UPDATE

(Issued: 3/16/21 @ 4:30pm)

Reason for Trip by Arrival Airport - Transpacific Screened Passengers as of 03/15/21	Honolulu (HNL)	Kahului (OGG)	Kona (KOA)	Hilo (ITO)	Lihue (LIH)	Grand Total
Airline Crew	459	251	111	0	22	843
Connecting Flight (Transit)	450	40	1	0	1	492
Corporate Meeting	13	3	3	0	0	19
Essential Worker	136	40	20	0	12	208
Honeymoon	27	26	7	0	0	60
Incentive Trip	0	4	1	0	0	5
Intended Resident	124	19	16	0	3	162
Military or Federal Government	111	0	0	0	1	112
Other	75	20	12	0	1	108
Other Business	97	33	17	0	3	150
Pleasure/Vacation	4,362	3,862	1,362	0	84	9,670
Returning Resident	1,144	212	140	0	37	1,533
Sports Event	1	0	0	0	0	1
To Attend School	18	0	2	0	0	20
To Get Married	10	4	0	0	0	14
Visiting Friends or Relatives	1,180	349	241	0	38	1,808
Grand Total	8,207	4,863	1,933	0	202	15,205

Source: Safe Travels program developed by the State of Hawaii Office of Enterprise Technology Services
 Note: The data is preliminary and subject to change



Daily Passenger Count Table

03/15/2021	Domestic	International	Total
Oahu	7430	215	7645
Maui	4343		4343
Island of Hawaii	1730		1730
Kauai	170		170
State	13673	215	13888

Novel Coronavirus in Hawaii

COVID-19 Positive Cases

Cumulative totals as of 12:00pm on March 16, 2021

Total Confirmed Cases	28,352* (48 new)
Hawaii	2,343
Kauai	187
Lanai	108
Maui	2465†
Molokai	28
Oahu	22,342
Out of State	879
Pending	0
Required Hospitalization	1934‡
Hawaii Deaths	451
Cases in the past 14 days	709*

Footnotes for COVID-19 Cases

*As a result of updated information, one case on Oahu was dropped from the counts.

**Using cases reported in the past 14 days provides a rough approximation of the number of cases currently meeting criteria for isolation. This proxy number for "active cases" resolves classification issues for cases unable to be reached or who are out of jurisdiction, for whom precise release from isolation date may not be possible to determine. It is also not influenced by lags in data entry. (This total does not include Hawaii residents diagnosed outside of Hawaii)

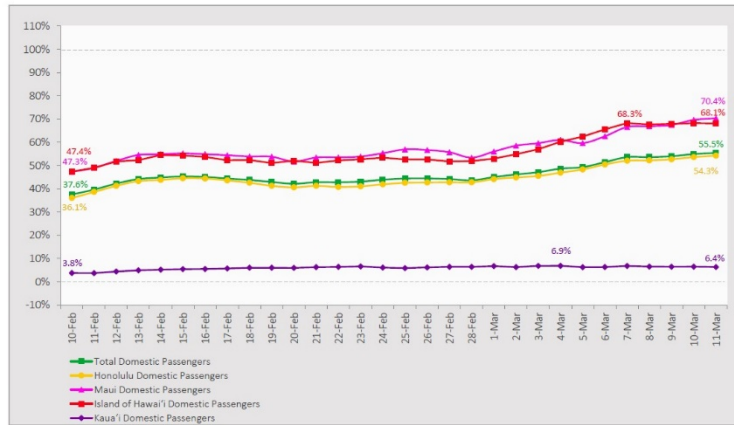
†One case is a Lanai resident whose exposure is on Maui Island and who will be remaining on Maui Island for the interim.

‡Includes Hawaii residents hospitalized out of state.

§Includes cases that meet isolation release criteria (Isolation should be maintained until at least 24 hours after resolution of fever and myalgia without the use of antipyretics OR at least 10 days have passed since symptom onset, whichever is longer). (The cases that have died and one case that has left the jurisdiction have been removed from these counts). Positive cases include confirmed cases, and Hawaii residents and non-residents; data are preliminary and subject to change. Note that CDC provides case counts according to states of residence.

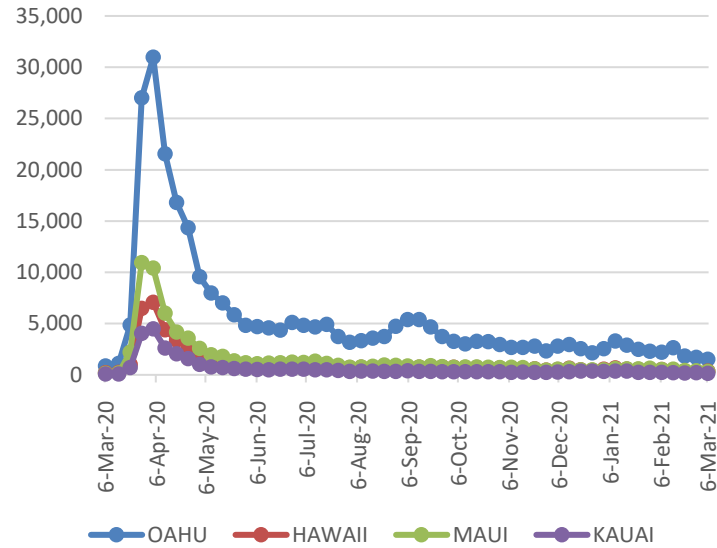
7-Day Domestic by Island Moving Average Daily Passenger Volume

2021 Volume as Percentage of 2020 Volume
Through March 11, 2021



Source: HVCB analysis based on data from DBEDT
Note: Passenger volume figures include both visitors and residents.

2021 Initial Weekly Unemployment Claims by Island



Domestic Only March 2021 (Month-to-Date through March 15)

	2021	2020	Volume Change	Percent Change
Honolulu	101,585	177,113	-75,528	-42.6%
Maui	63,270	83,467	-20,197	-24.2%
Island of Hawai'i	29,509	41,042	-11,533	-28.1%
Kaua'i	2,289	30,607	-28,318	-92.5%
Total	196,653	332,229	-135,576	-40.8%

Domestic Only 2021 (Year-to-Date through March 15)

	2021	2020	Volume Change	Percent Change
Honolulu	363,254	914,107	-550,853	-60.3%
Maui	211,274	424,632	-213,358	-50.2%
Island of Hawai'i	99,202	206,573	-107,371	-52.0%
Kaua'i	6,996	144,352	-137,356	-95.2%
Total	680,726	1,689,664	-1,008,938	-59.7%

Note: Passenger volume figures include both visitors and residents. 2020 includes one additional day due to Leap Year (February 29th, 2020).

Weekly Unemployment Initial Claims: March 6, 2021

State of Hawaii	2,483
C&C of Oahu	1,512
Honolulu	640
Kaneohe	138
Waipahu	734
Hawaii County	354
Hilo	230
Kona	124
Maui County	323
Wailuku	313
Molokai	10
Kauai County	131
Agent (filed in Hawaii against another state)	163

News Highlights

March 16, 2021

Hawaii News Now: [Hawaii shores inundated with visitors as spring break drives up travel](#)

Honolulu Civil Beat: [Hawaii's Rush To Vaccinate Has Led To A Patchwork System With Little Policing](#)

The Maui News: [State kicks off largest phase of vaccinations](#)

West Hawaii Today: [DOH reports seven new COVID-19 cases](#)

Fox News Salt Lake City: [Utah couple stranded in Hawaii over COVID-19 confusion](#)

Today: [Is flying safe now? Answers to your burning COVID-19 travel questions](#)

Travel Pulse: [Vaccinated Americans Are Ready To Travel](#)

Travel Pulse: [Airports See Another Surge in Passenger Traffic](#)

The Points Guy: [How far is too far? The murky, uncharted waters of vaccine tourism](#)

Forbes: [Are Covid 'Resort Bubbles' The Next Step For Safe Travel?](#)

Helpful Resources

Department of Health
<https://hawaiiicovid19.com/>

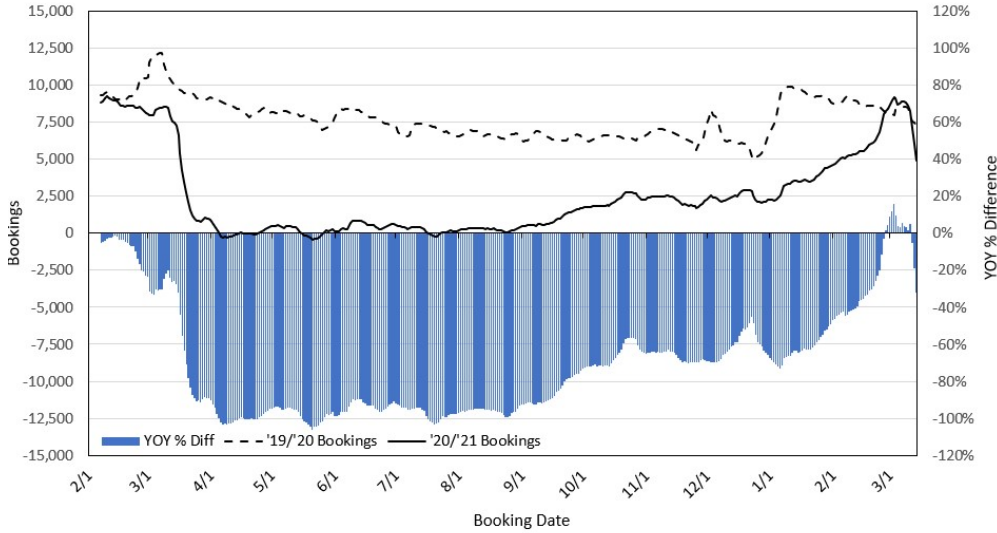
Hawaii Tourism Authority
<https://www.hawaiitourismauthority.org/covid-19-updates/>

Dept. of Business, Economic Development & Tourism
<https://dbedt.hawaii.gov/economic/covid19/>

Department of Transportation
<https://hidot.hawaii.gov/coronavirus/>

**Travel Agency Bookings to Hawaii for Future Arrivals*
Based on a 7-day Moving Average as of March 14, 2021**

U.S.

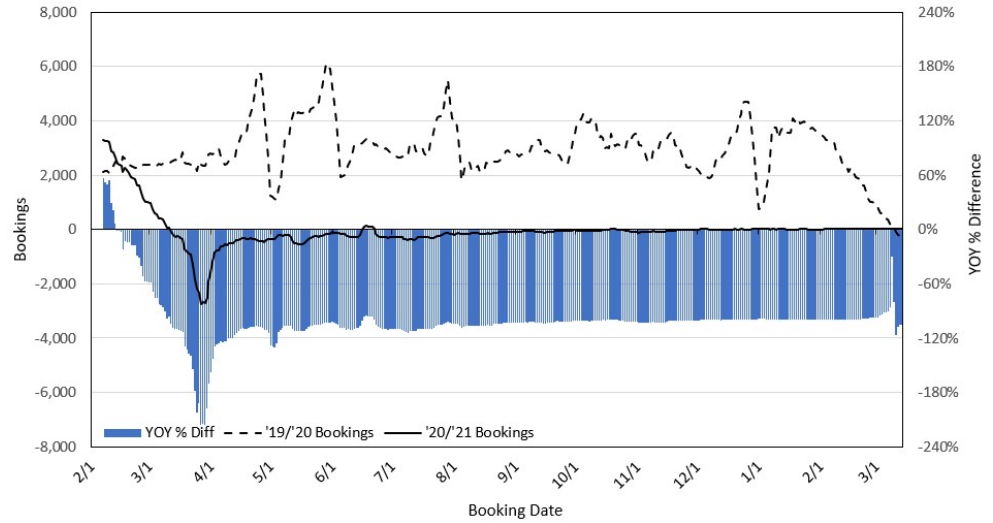


*Future Arrivals refers to all arrivals that are 'future' relative to the referenced booking date.
Source: Global Agency Pro

Update: Mar 14, 2021

**Travel Agency Bookings to Hawaii for Future Arrivals*
Based on a 7-day Moving Average as of March 14, 2021**

Japan

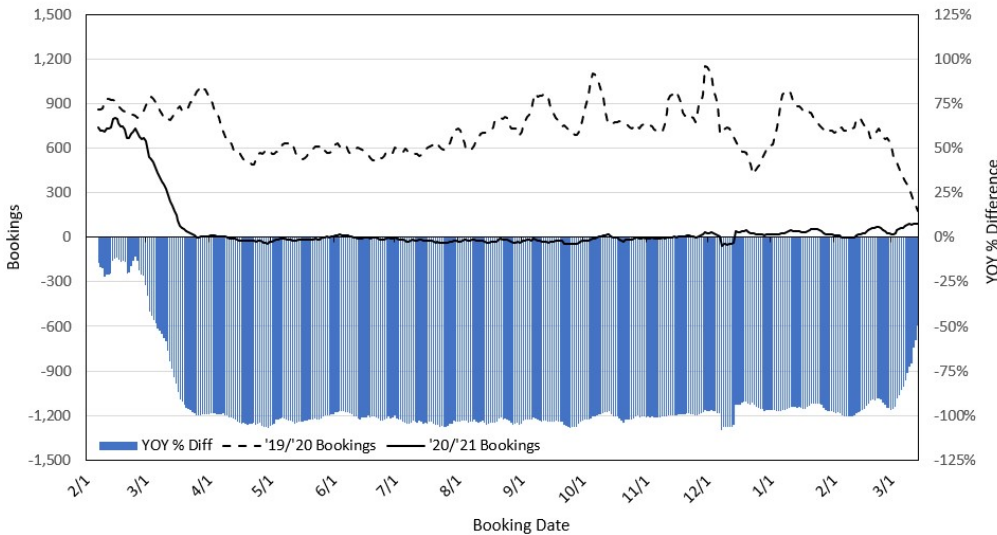


*Future Arrivals refers to all arrivals that are 'future' relative to the referenced booking date.
Source: Global Agency Pro

Update: Mar 14, 2021

**Travel Agency Bookings to Hawaii for Future Arrivals*
Based on a 7-day Moving Average as of March 14, 2021**

Canada

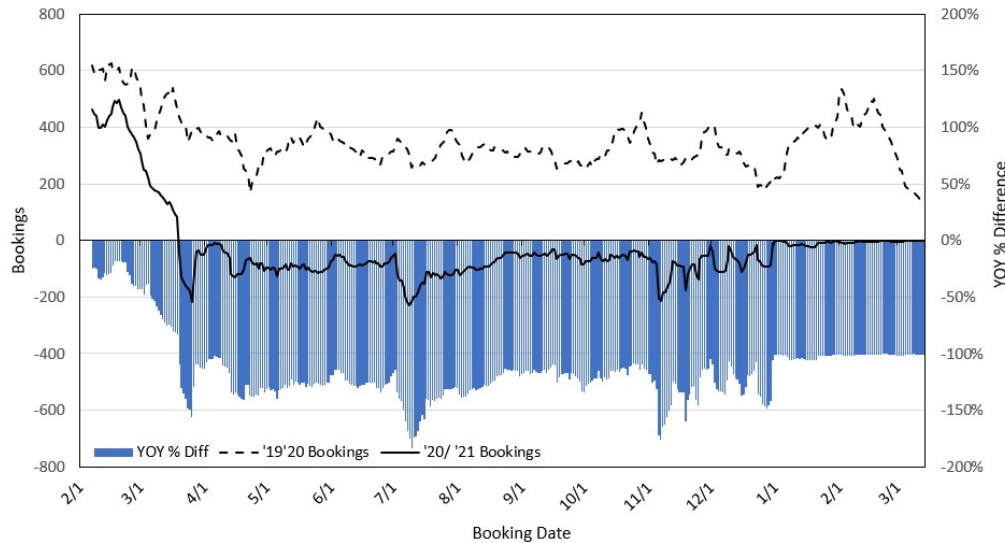


*Future Arrivals refers to all arrivals that are 'future' relative to the referenced booking date.
Source: Global Agency Pro

Update: Mar 14, 2021

**Travel Agency Bookings to Hawaii for Future Arrivals*
Based on a 7-day Moving Average as of March 14, 2021**

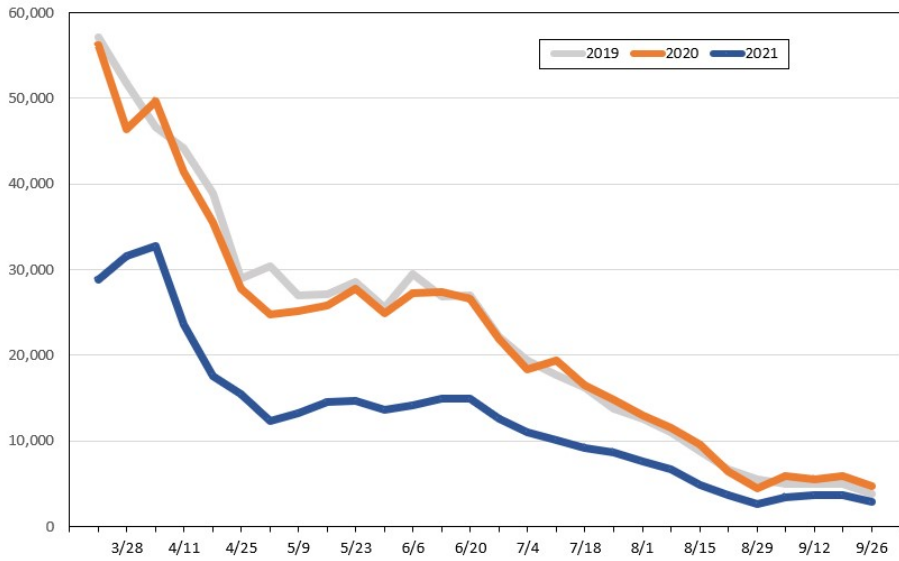
Australia



*Future Arrivals refers to all arrivals that are 'future' relative to the referenced booking date.
Source: Global Agency Pro

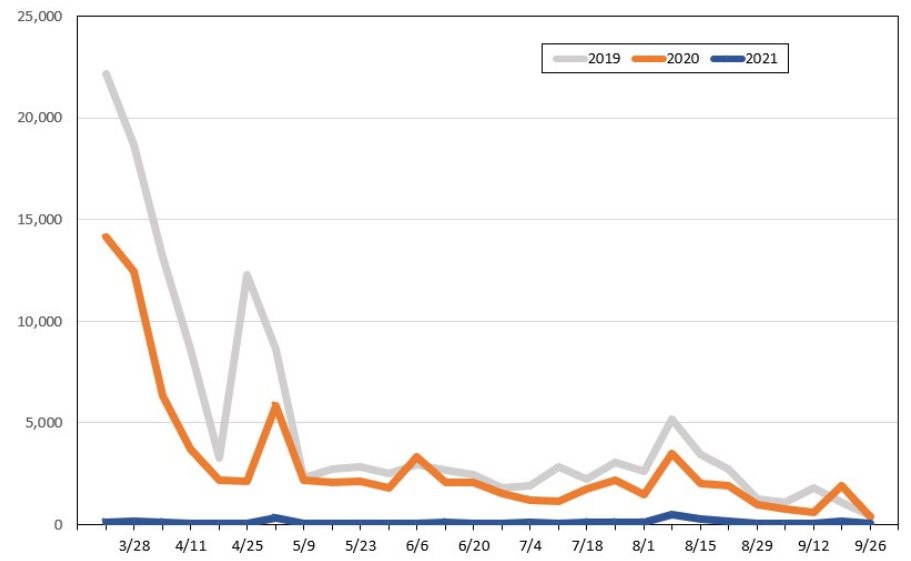
Update: Mar 14, 2021

Travel Agency Weekly Bookings for Future Travel to Hawai'i as of March 14, 2021
U.S.



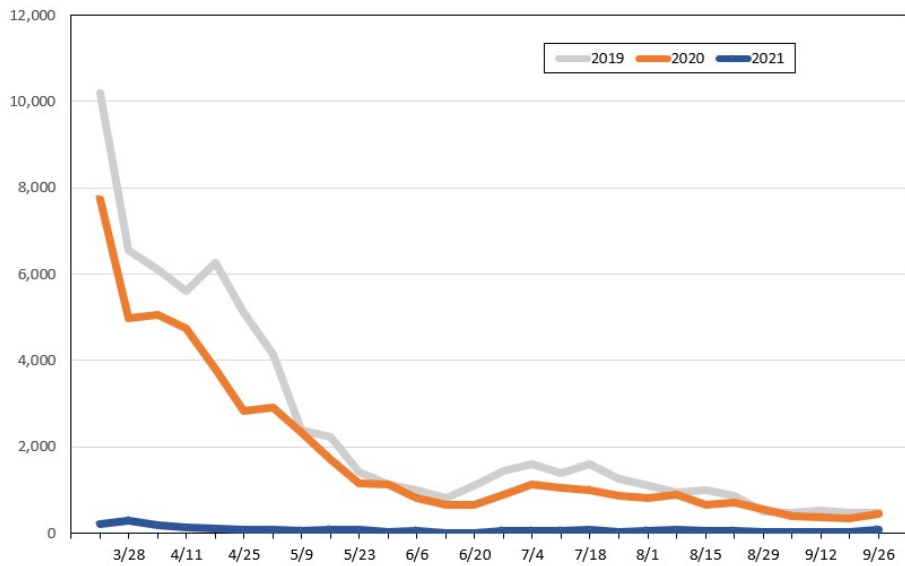
Source: Global Agency Pro, as of March 14, 2021

Travel Agency Weekly Bookings for Future Travel to Hawai'i as of March 14, 2021
Japan



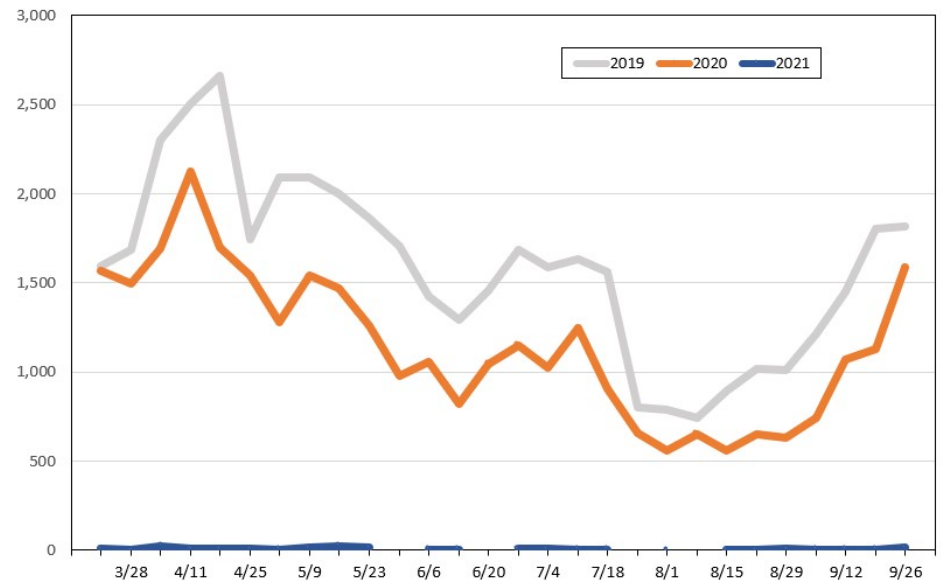
Source: Global Agency Pro, as of March 14, 2021

Travel Agency Weekly Bookings for Future Travel to Hawai'i as of March 14, 2021
Canada



Source: Global Agency Pro, as of March 14, 2021

Travel Agency Weekly Bookings for Future Travel to Hawai'i as of March 14, 2021
Australia



Source: Global Agency Pro, as of March 14, 2021