

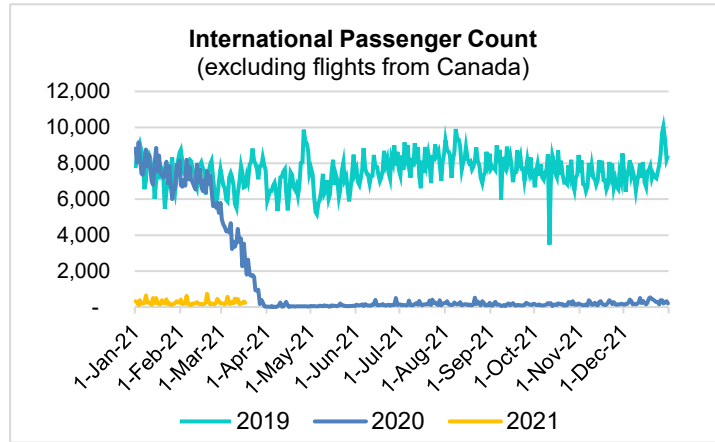
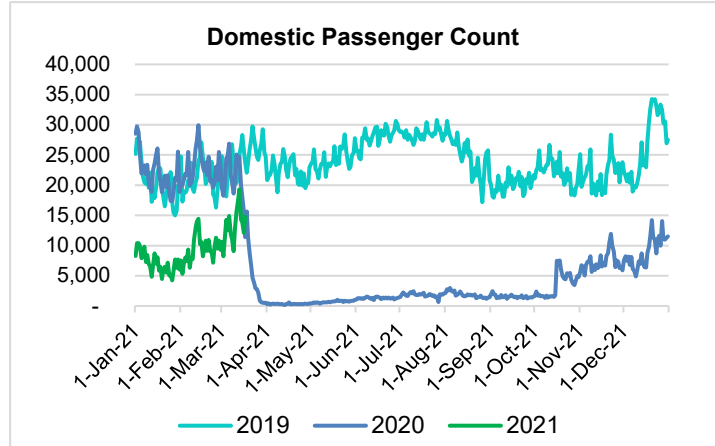
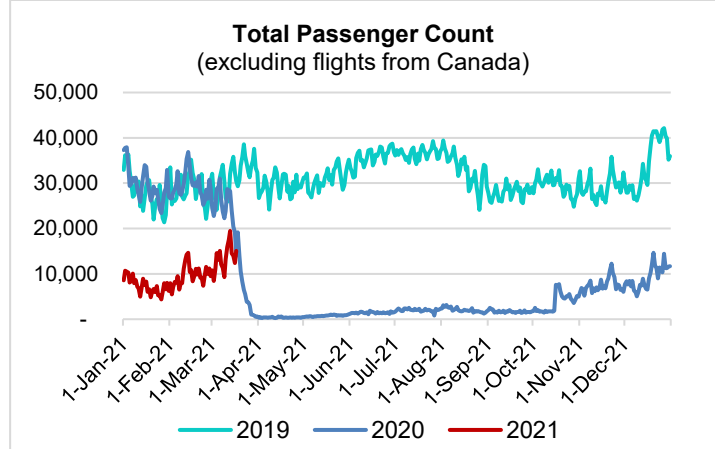
# HTA COVID-19 UPDATE

(Issued: 3/18/21 @ 4:30pm)

Reason for Trip by Arrival Airport - Transpacific Screened Passengers as of 03/17/21	Honolulu (HNL)	Kahului (OGG)	Kona (KOA)	Hilo (ITO)	Lihue (LIH)	Grand Total
Airline Crew	520	241	103	0	23	887
Connecting Flight (Transit)	476	37	2	0	0	515
Corporate Meeting	3	3	2	0	0	8
Essential Worker	88	20	8	0	4	120
Honeymoon	15	5	5	0	0	25
Incentive Trip	2	1	0	0	1	4
Intended Resident	89	23	13	0	5	130
Military or Federal Government	96	3	0	0	1	100
Other	94	26	15	0	1	136
Other Business	72	35	22	0	7	136
Pleasure/Vacation	4,588	4,500	1,639	0	121	10,848
Returning Resident	1,328	220	137	0	17	1,702
Sports Event	24	0	0	0	0	24
To Attend School	10	0	0	0	0	10
To Get Married	20	15	3	0	0	38
Transit	1	0	0	0	0	1
Visiting Friends or Relatives	1,447	355	267	0	17	2,086
<b>Grand Total</b>	<b>8,873</b>	<b>5,484</b>	<b>2,216</b>	<b>0</b>	<b>197</b>	<b>16,770</b>

Source: Safe Travels program developed by the State of Hawaii Office of Enterprise Technology Services

Note: The data is preliminary and subject to change



## Daily Passenger Count Table

03/17/2021	Domestic	International	Total
Oahu	7712	243	7955
Maui	4946		4946
Island of Hawaii	2051		2051
Kauai	98		98
State	14807	243	15050

## Novel Coronavirus in Hawaii

### COVID-19 Positive Cases

Cumulative totals as of 12:00pm on March 18, 2021

Total Confirmed Cases	28,509* (88 new)
Hawaii	2,354
Kauai	186
Lanai	109
Maui	2527†
Molokai	30
Oahu	22,419
Out of State	884
Pending	0
Required Hospitalization	1943‡
Hawaii Deaths	451
Cases in the past 14 days	781*

### Footnotes for COVID-19 Cases

\*As a result of updated information, one case on Kauai was recategorized to Oahu.

\*\*Using cases reported in the past 14 days provides a rough approximation of the number of cases currently meeting criteria for isolation. This proxy number for "active cases" resolves classification issues for cases unable to be reached or who are out of jurisdiction, for whom precise release from isolation date may not be possible to determine. It is also not influenced by lags in data entry. (This total does not include Hawaii residents diagnosed outside of Hawaii)

†One case is a Lanai resident whose exposure is on Maui Island and who will be remaining on Maui Island for the interim.

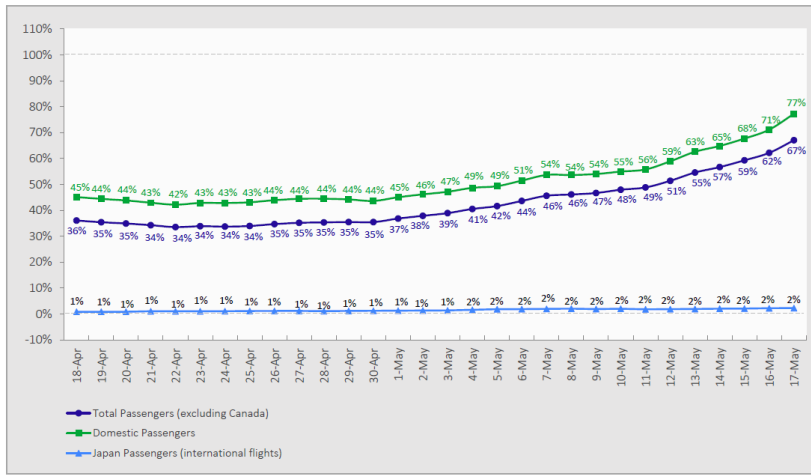
‡Includes Hawaii residents hospitalized out of state.

§Includes cases that meet isolation release criteria (Isolation should be maintained until at least 24 hours after resolution of fever and myalgia without the use of antipyretics OR at least 10 days have passed since symptom onset, whichever is longer). (The cases that have died and one case that has left the jurisdiction have been removed from these counts). Positive cases include confirmed cases, and Hawaii residents and non-residents; data are preliminary and subject to change. Note that CDC provides case counts according to states of residence.

### 7-Day Moving Average Daily Passenger Volume

2021 Volume as Percentage of 2020 Volume

Through March 17, 2021



Source: HVCB analysis based on data from DBEDT  
 Note: Passenger volume figures include both visitors and residents. Total includes other international passengers.

### Domestic by Island Month-to-Date and Year-to-Date Daily Passenger Volume

2021 Volume versus 2020 Volume

Through March 17, 2021

March 2021 (Month-to-Date through March 17)

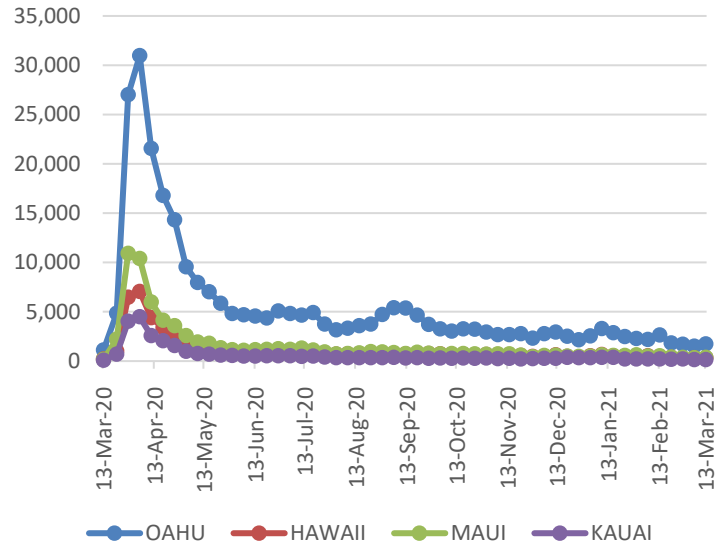
	2021	2020	Volume Change	Percent Change
Honolulu	115,836	196,136	-80,300	-40.9%
Maui County	71,813	91,572	-19,759	-21.6%
Island of Hawai'i	33,558	45,547	-11,989	-26.3%
Kaua'i	2,465	32,762	-30,297	-92.5%
<b>Total</b>	<b>223,672</b>	<b>366,017</b>	<b>-142,345</b>	<b>-38.9%</b>

2021 (Year-to-Date through March 17)

	2021	2020	Volume Change	Percent Change
Honolulu	377,505	933,130	-555,625	-59.5%
Maui County	219,817	432,737	-212,920	-49.2%
Island of Hawai'i	103,251	211,078	-107,827	-51.1%
Kaua'i	7,172	146,507	-139,335	-95.1%
<b>Total</b>	<b>707,745</b>	<b>1,723,452</b>	<b>-1,015,707</b>	<b>-58.9%</b>

Source: HVCB analysis based on data from DBEDT  
 Note: Passenger volume figures include both visitors and residents. Total includes other international passengers. 2020 includes one additional day due to Leap Year (February 29th, 2020).

### 2021 Initial Weekly Unemployment Claims by Island



### Weekly Unemployment Initial Claims: March 13, 2021

<b>State of Hawaii</b>	<b>2,699</b>
<b>C&amp;C of Oahu</b>	<b>1,720</b>
Honolulu	727
Kaneohe	156
Waipahu	837
<b>Hawaii County</b>	<b>326</b>
Hilo	184
Kona	142
<b>Maui County</b>	<b>380</b>
Wailuku	370
Molokai	10
<b>Kauai County</b>	<b>157</b>
<b>Agent (filed in Hawaii against another state)</b>	<b>116</b>

## News Highlights

March 18, 2021

**Hawaii News Now:** [Queen's Medical Center-West Oahu to launch mass vaccination clinic](#)

**KITV4:** [DOH: 69 new COVID-19 cases reported statewide Wednesday](#)

**The Garden Island:** [One new case on island, travel related](#)

**Hawaii Tribune-Herald:** [Nearly 500K doses of COVID vaccines administered in Hawaii](#)

**Pacific Business News:** [Tourism-focused workforce development event moves online this year](#)

**ABC News:** [Experts urge caution as 15 states see uptick in COVID-19 infections](#)

**Travel Pulse:** [Travel Loses \\$1.1 Trillion in US Economic Output](#)

**Phocus Wire:** [How pandemic-led consumer behaviors might play out in travel](#)

**The Washington Post:** [Adapting to post-pandemic life will require remembering covid-19](#)

**Travel Week:** [Hawaii sees busiest travel day since start of pandemic in US](#)

### Helpful Resources

**Department of Health**  
<https://hawaiiicovid19.com/>

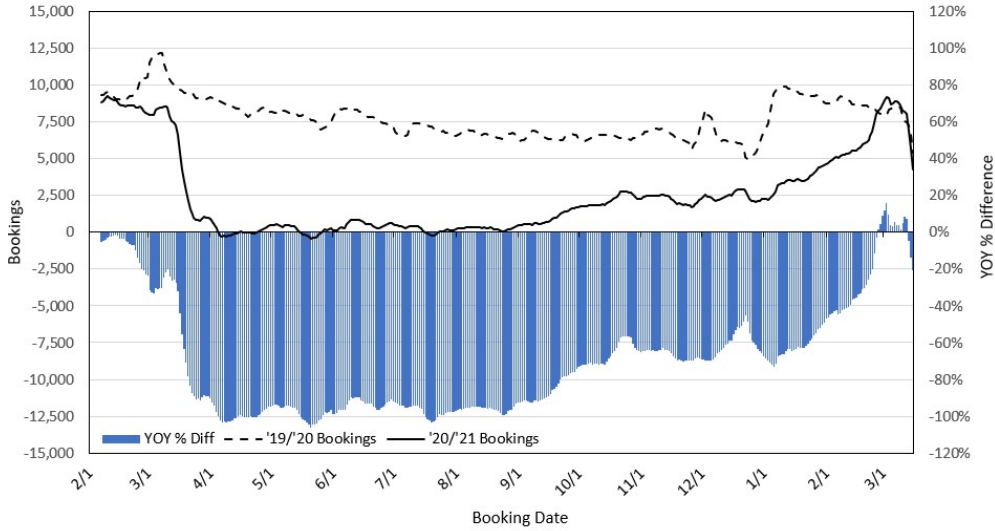
**Hawaii Tourism Authority**  
<https://www.hawaiitourismauthority.org/covid-19-updates/>

**Dept. of Business, Economic Development & Tourism**  
<https://dbedt.hawaii.gov/economic/covid19/>

**Department of Transportation**  
<https://hidot.hawaii.gov/coronavirus/>

**Travel Agency Bookings to Hawaii for Future Arrivals\*  
Based on a 7-day Moving Average as of March 16, 2021**

**U.S.**

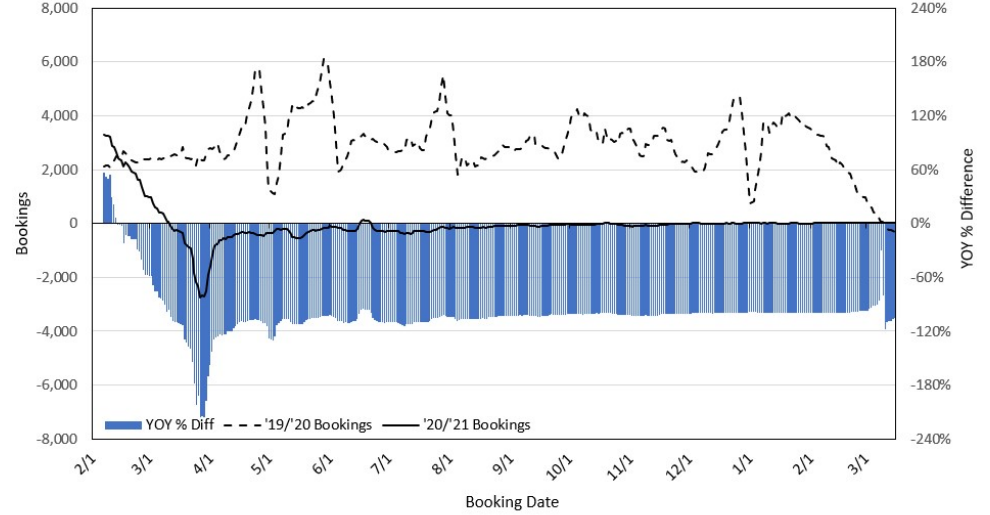


\*Future Arrivals refers to all arrivals that are 'future' relative to the referenced booking date.  
Source: Global Agency Pro

Update: Mar 16, 2021

**Travel Agency Bookings to Hawaii for Future Arrivals\*  
Based on a 7-day Moving Average as of March 16, 2021**

**Japan**

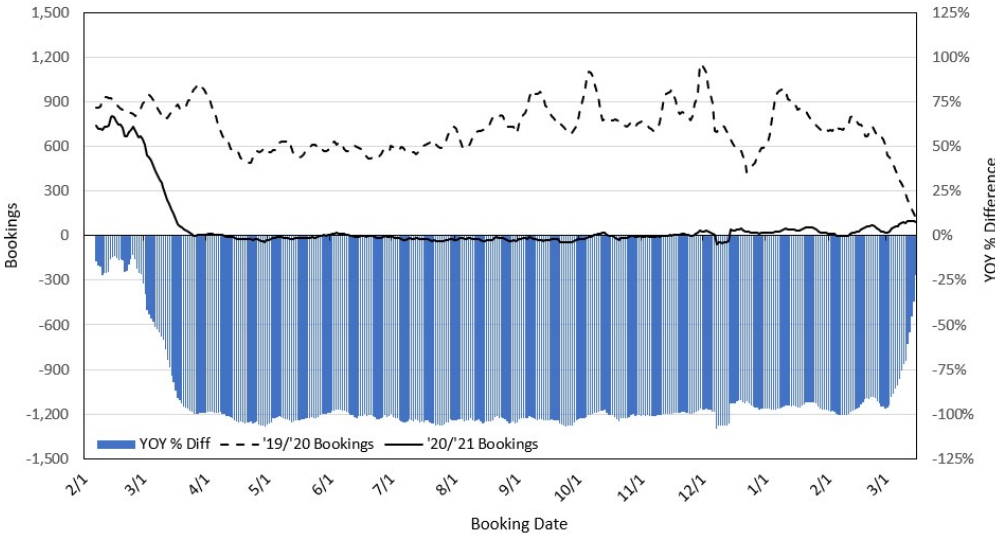


\*Future Arrivals refers to all arrivals that are 'future' relative to the referenced booking date.  
Source: Global Agency Pro

Update: Mar 16, 2021

**Travel Agency Bookings to Hawaii for Future Arrivals\*  
Based on a 7-day Moving Average as of March 16, 2021**

**Canada**

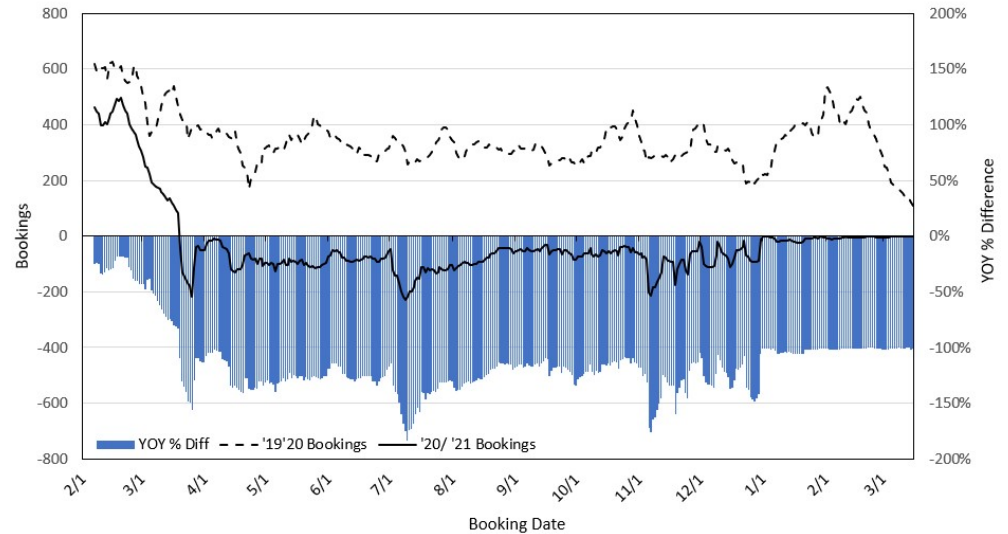


\*Future Arrivals refers to all arrivals that are 'future' relative to the referenced booking date.  
Source: Global Agency Pro

Update: Mar 16, 2021

**Travel Agency Bookings to Hawaii for Future Arrivals\*  
Based on a 7-day Moving Average as of March 16, 2021**

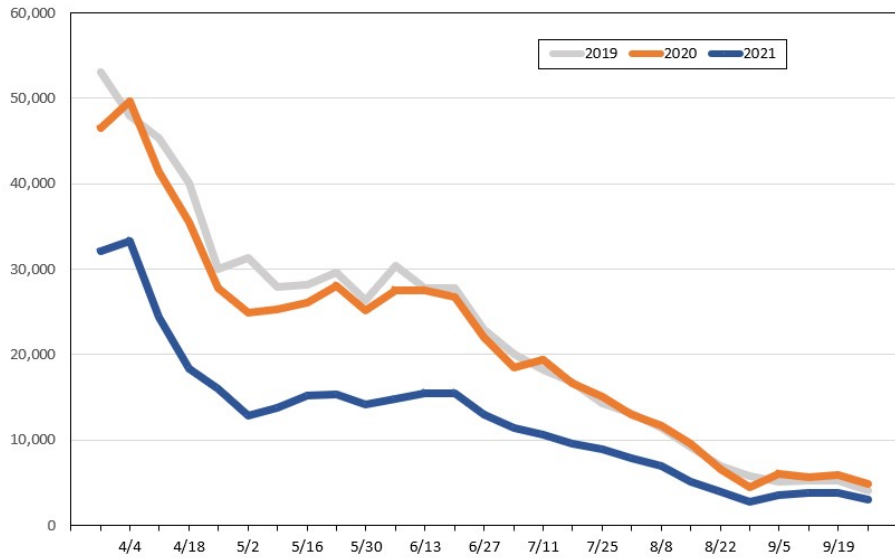
**Australia**



\*Future Arrivals refers to all arrivals that are 'future' relative to the referenced booking date.  
Source: Global Agency Pro

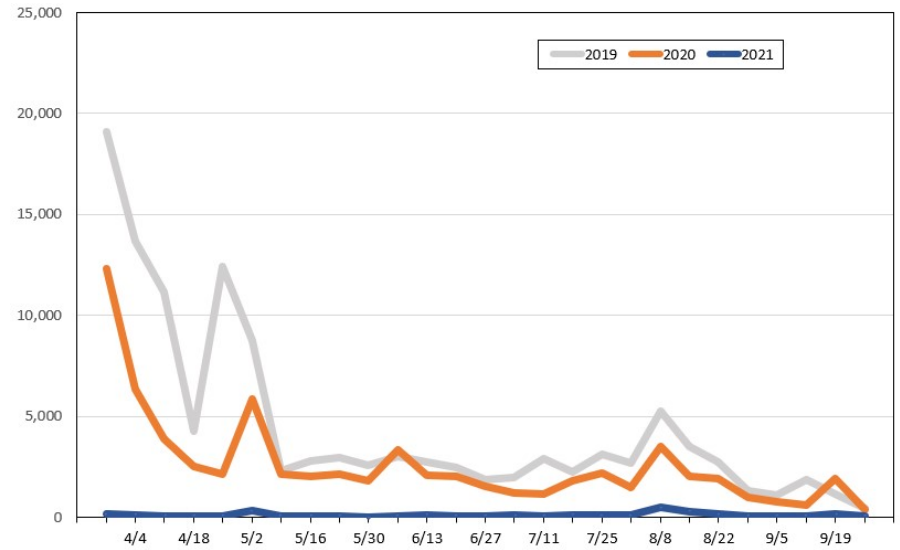
Update: Mar 16, 2021

**Travel Agency Weekly Bookings for Future Travel to Hawai'i as of March 16, 2021**  
U.S.



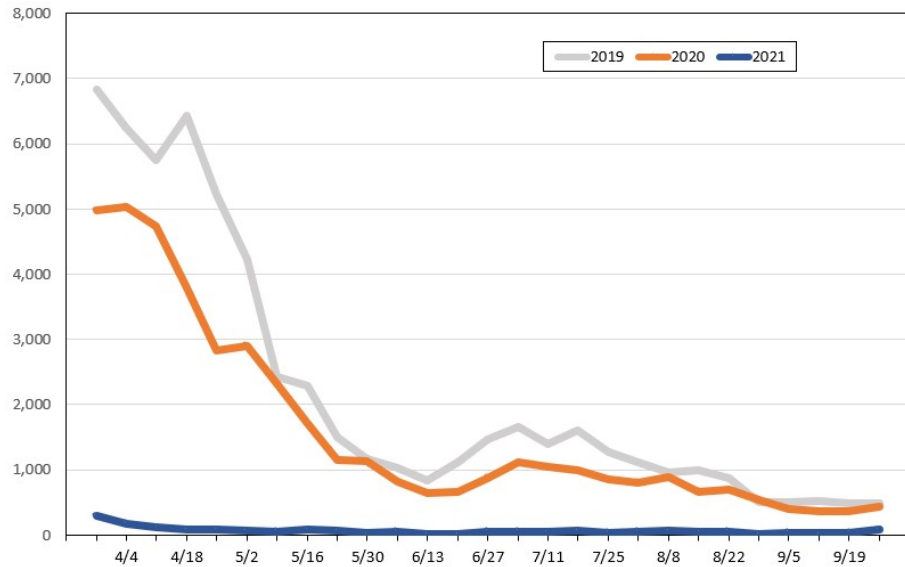
Source: Global Agency Pro, as of March 16, 2021

**Travel Agency Weekly Bookings for Future Travel to Hawai'i as of March 16, 2021**  
Japan



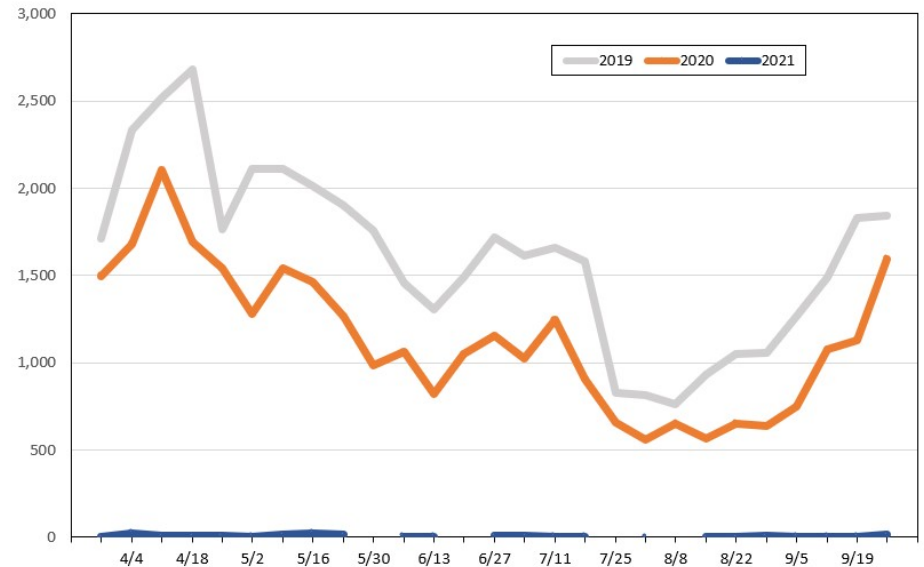
Source: Global Agency Pro, as of March 16, 2021

**Travel Agency Weekly Bookings for Future Travel to Hawai'i as of March 16, 2021**  
Canada



Source: Global Agency Pro, as of March 16, 2021

**Travel Agency Weekly Bookings for Future Travel to Hawai'i as of March 16, 2021**  
Australia



Source: Global Agency Pro, as of March 16, 2021