

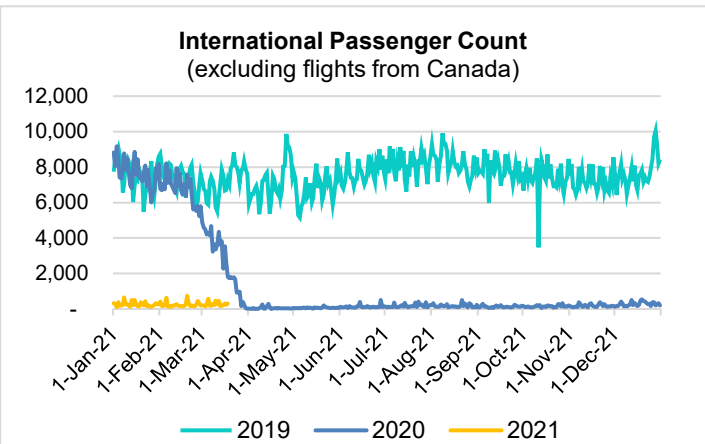
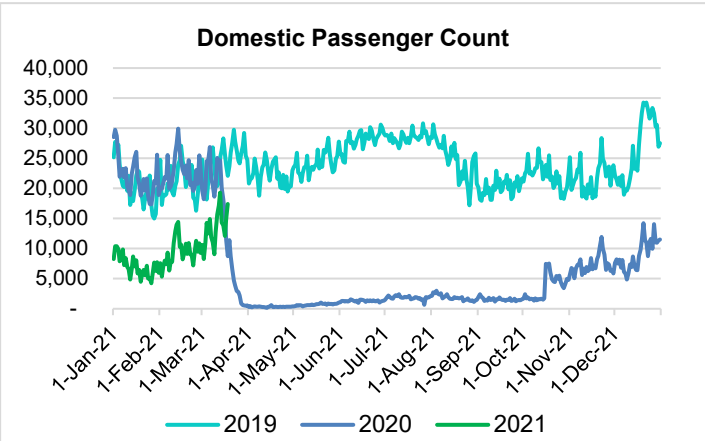
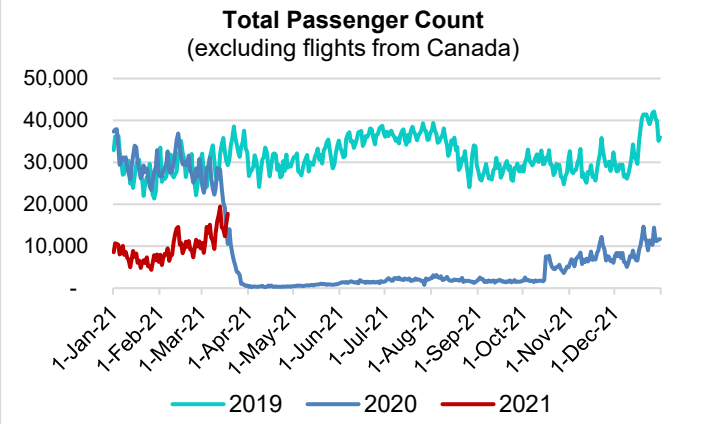
# HTA COVID-19 UPDATE

(Issued: 3/19/21 @ 4:30pm)

Reason for Trip by Arrival Airport - Transpacific Screened Passengers as of 03/18/21	Honolulu (HNL)	Kahului (OGG)	Kona (KOA)	Hilo (ITO)	Lihue (LIH)	Grand Total
Airline Crew	520	251	102	5	22	900
Connecting Flight (Transit)	470	31	6	4	2	513
Corporate Meeting	14	7	3	0	1	25
Essential Worker	70	10	13	5	7	105
Honeymoon	15	19	0	0	0	34
Incentive Trip	6	0	0	0	0	6
Intended Resident	92	16	18	3	2	131
Military or Federal Government	149	1	0	0	8	158
Other	83	21	17	3	4	128
Other Business	67	17	32	0	3	119
Pleasure/Vacation	5,966	4,936	2,159	40	180	13,281
Returning Resident	1,131	218	143	37	40	1,569
Sports Event	35	7	0	0	0	42
To Attend School	10	0	1	1	0	12
To Get Married	10	8	0	0	0	18
Visiting Friends or Relatives	1,677	394	330	44	30	2,475
<b>Grand Total</b>	<b>10,315</b>	<b>5,936</b>	<b>2,824</b>	<b>142</b>	<b>299</b>	<b>19,516</b>

Source: Safe Travels program developed by the State of Hawaii Office of Enterprise Technology Services

Note: The data is preliminary and subject to change



## Daily Passenger Count Table

03/18/2021	Domestic	International	Total
Oahu	9136	307	9443
Maui	5371		5371
Island of Hawaii	2713		2713
Kauai	176		176
State	17396	307	17703

## Novel Coronavirus in Hawaii

### COVID-19 Positive Cases

Cumulative totals as of 12:00pm on March 19, 2021

Total Confirmed Cases	28,608* (99 new)
Hawaii	2,361
Kauai	186
Lanai	109
Maui	2564†
Molokai	30
Oahu	22,468
Out of State	890
Pending	0
Required Hospitalization	1947‡
Hawaii Deaths	452
Cases in the past 14 days	823*

## Footnotes for COVID-19 Cases

\*

\*\*Using cases reported in the past 14 days provides a rough approximation of the number of cases currently meeting criteria for isolation. This proxy number for "active cases" resolves classification issues for cases unable to be reached or who are out of jurisdiction, for whom precise release from isolation date may not be possible to determine. It is also not influenced by lags in data entry. (This total does not include Hawaii residents diagnosed outside of Hawaii)

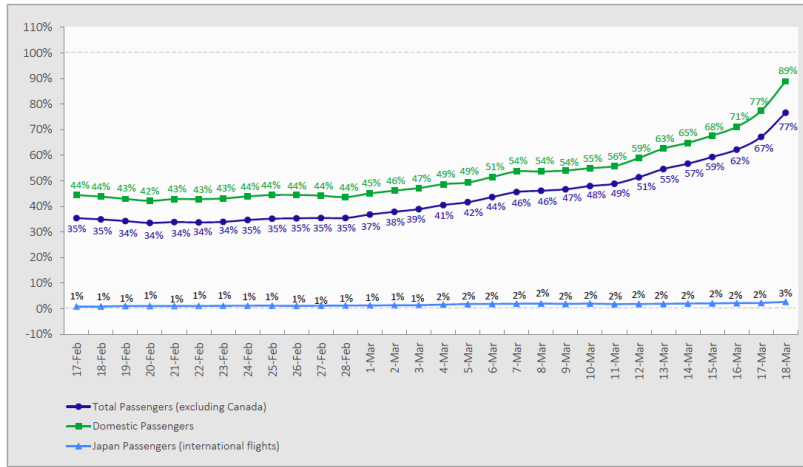
†One case is a Lanai resident whose exposure is on Maui Island and who will be remaining on Maui Island for the interim.

#Includes Hawaii residents hospitalized out of state.

§Includes cases that meet isolation release criteria (Isolation should be maintained until at least 24 hours after resolution of fever and myalgia without the use of antipyretics OR at least 10 days have passed since symptom onset, whichever is longer). (The cases that have died and one case that has left the jurisdiction have been removed from these counts). Positive cases include confirmed cases, and Hawaii residents and non-residents; data are preliminary and subject to change. Note that CDC provides case counts according to states of residence.

### 7-Day Moving Average Daily Passenger Volume

2021 Volume as Percentage of 2020 Volume  
Through March 18, 2021



Source: HVCB analysis based on data from DBEDT  
Note: Passenger volume figures include both visitors and residents. Total includes other international passengers.

### Domestic by Island Month-to-Date and Year-to-Date Daily Passenger Volume

2021 Volume versus 2020 Volume  
Through March 18, 2021

March 2021 (Month-to-Date through March 18)

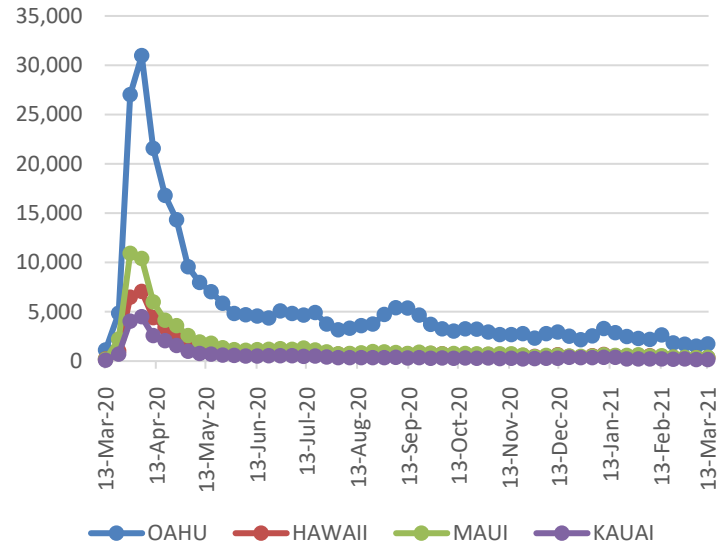
	2021	2020	Volume Change	Percent Change
Honolulu	125,092	203,161	-78,069	-38.4%
Maui County	77,184	93,784	-16,600	-17.7%
Island of Hawai'i	36,271	46,951	-10,680	-22.7%
Kaua'i	2,702	33,519	-30,817	-91.9%
<b>Total</b>	<b>241,249</b>	<b>377,415</b>	<b>-136,166</b>	<b>-36.1%</b>

2021 (Year-to-Date through March 18)

	2021	2020	Volume Change	Percent Change
Honolulu	386,761	940,155	-553,394	-58.9%
Maui County	225,188	434,949	-209,761	-48.2%
Island of Hawai'i	105,964	212,482	-106,518	-50.1%
Kaua'i	7,409	147,264	-139,855	-95.0%
<b>Total</b>	<b>725,322</b>	<b>1,734,850</b>	<b>-1,009,528</b>	<b>-58.2%</b>

Source: HVCB analysis based on data from DBEDT  
Note: Passenger volume figures include both visitors and residents. Total includes other international passengers. 2020 includes one additional day due to Leap Year (February 29th, 2020).

### 2021 Initial Weekly Unemployment Claims by Island



### Weekly Unemployment Initial Claims: March 13, 2021

<b>State of Hawaii</b>	<b>2,699</b>
<b>C&amp;C of Oahu</b>	<b>1,720</b>
Honolulu	727
Kaneohe	156
Waipahu	837
<b>Hawaii County</b>	<b>326</b>
Hilo	184
Kona	142
<b>Maui County</b>	<b>380</b>
Wailuku	370
Molokai	10
<b>Kauai County</b>	<b>157</b>
<b>Agent (filed in Hawaii against another state)</b>	<b>116</b>

### News Highlights

March 19, 2021

**Honolulu Star Advertiser:** [Letters: White racism hinders reaching our potential; COVID relief will have to be repaid fivefold; Unemployed face long wait to get benefits](#)

**Hawaii News Now:** [Swelling inmate populations prompt new fears about COVID outbreaks](#)

**Hawaii Public Radio:** [Sheltered From Coronavirus, Kauai Plans Cautious Return to Tourism](#)

**The Maui News:** [Clusters account for 41 Maui County coronavirus cases](#)

**Big Island Now:** [Seven New COVID Cases on Big Island Thursday](#)

**Hawaii Tribune-Herald:** [Nearly 21% of Hawaii County's total population vaccinated as of Thursday](#)

**West Hawaii Today:** [A shot in the arm: Money, vaccines headed to Hawaii Island](#)

**Eater:** [Nevada Opens COVID-19 Vaccination Availability to All Age 16 and Older on April 5](#)

**Travel Pulse:** [Travel Restrictions at US Land Borders With Canada, Mexico Extended Again](#)

### Helpful Resources

**Department of Health**  
<https://hawaiiicovid19.com/>

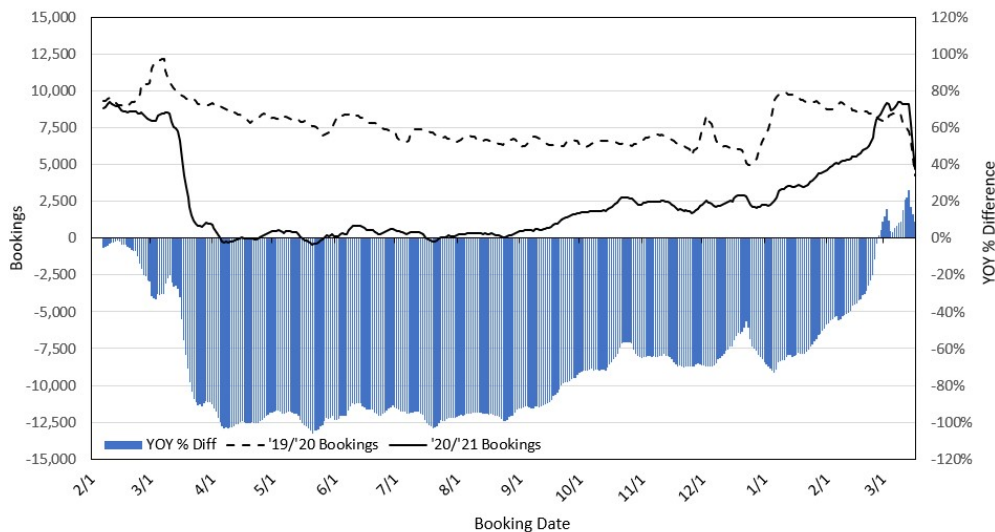
**Hawaii Tourism Authority**  
<https://www.hawaiitourismauthority.org/covid-19-updates/>

**Dept. of Business, Economic Development & Tourism**  
<https://dbedt.hawaii.gov/economic/covid19/>

**Department of Transportation**  
<https://hidot.hawaii.gov/coronavirus/>

**Travel Agency Bookings to Hawaii for Future Arrivals\*  
Based on a 7-day Moving Average as of March 17, 2021**

**U.S.**

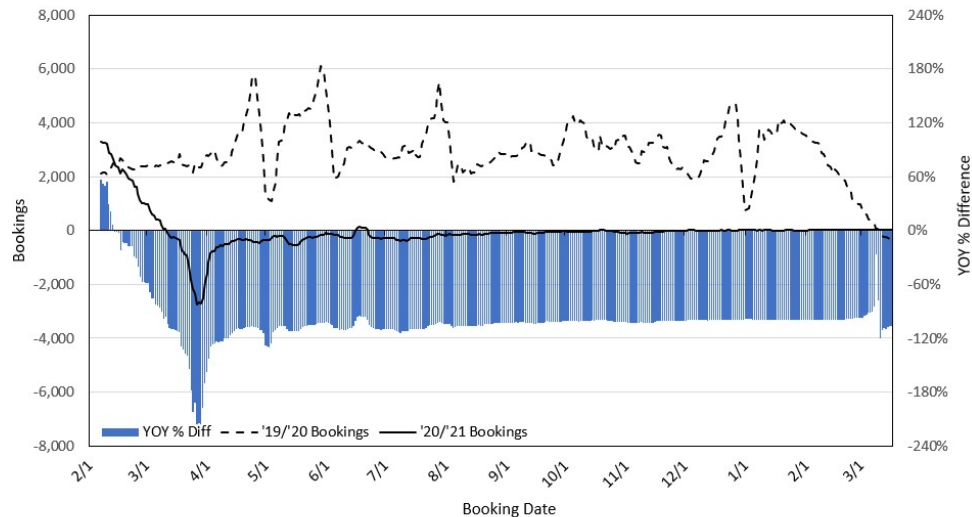


\*Future Arrivals refers to all arrivals that are 'future' relative to the referenced booking date.  
Source: Global Agency Pro

Update: Mar 17, 2021

**Travel Agency Bookings to Hawaii for Future Arrivals\*  
Based on a 7-day Moving Average as of March 17, 2021**

**Japan**

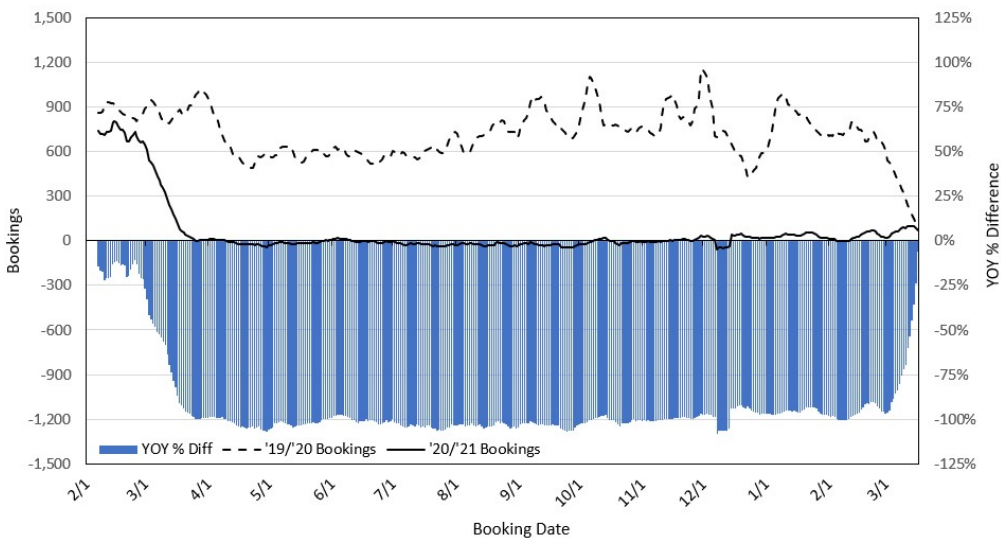


\*Future Arrivals refers to all arrivals that are 'future' relative to the referenced booking date.  
Source: Global Agency Pro

Update: Mar 17, 2021

**Travel Agency Bookings to Hawaii for Future Arrivals\*  
Based on a 7-day Moving Average as of March 17, 2021**

**Canada**

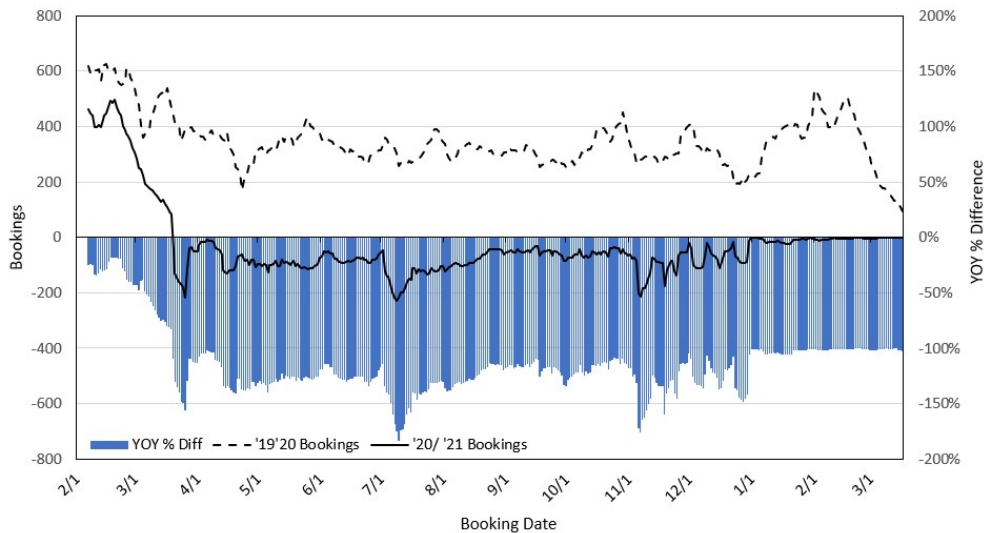


\*Future Arrivals refers to all arrivals that are 'future' relative to the referenced booking date.  
Source: Global Agency Pro

Update: Mar 17, 2021

**Travel Agency Bookings to Hawaii for Future Arrivals\*  
Based on a 7-day Moving Average as of March 17, 2021**

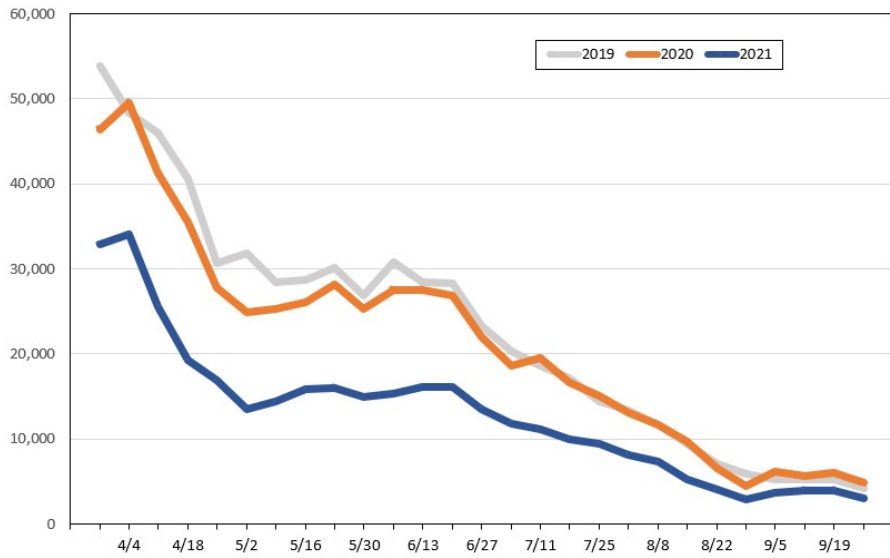
**Australia**



\*Future Arrivals refers to all arrivals that are 'future' relative to the referenced booking date.  
Source: Global Agency Pro

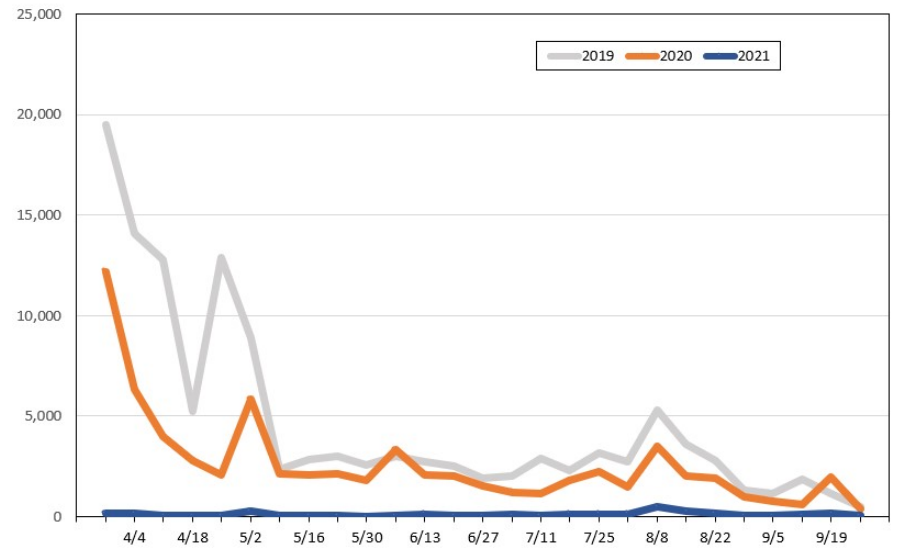
Update: Mar 17, 2021

**Travel Agency Weekly Bookings for Future Travel to Hawai'i as of March 17, 2021**  
U.S.



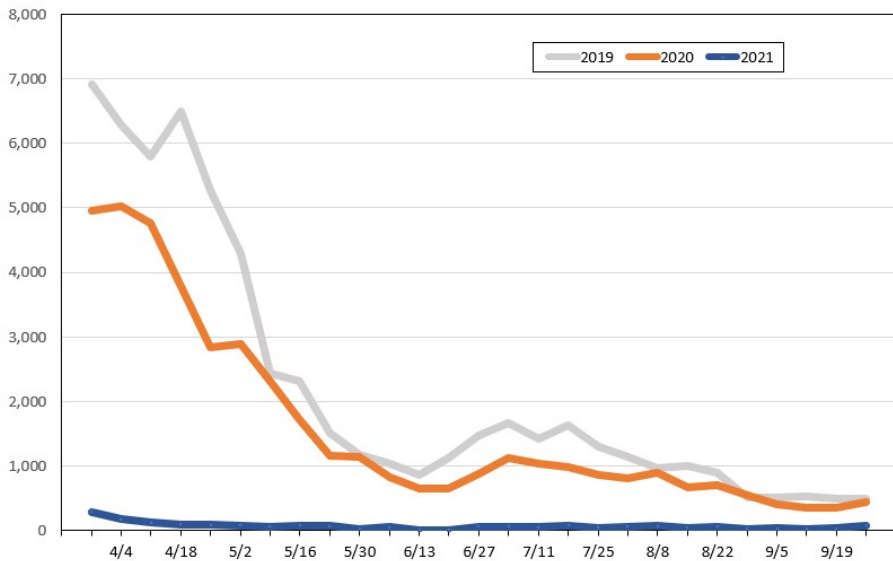
Source: Global Agency Pro, as of March 17, 2021

**Travel Agency Weekly Bookings for Future Travel to Hawai'i as of March 17, 2021**  
Japan



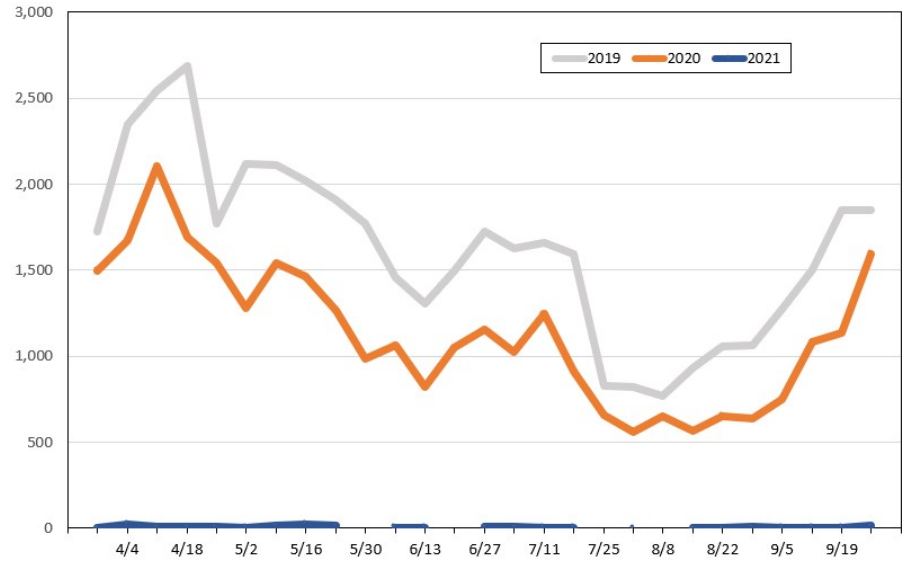
Source: Global Agency Pro, as of March 17, 2021

**Travel Agency Weekly Bookings for Future Travel to Hawai'i as of March 17, 2021**  
Canada



Source: Global Agency Pro, as of March 17, 2021

**Travel Agency Weekly Bookings for Future Travel to Hawai'i as of March 17, 2021**  
Australia



Source: Global Agency Pro, as of March 17, 2021