

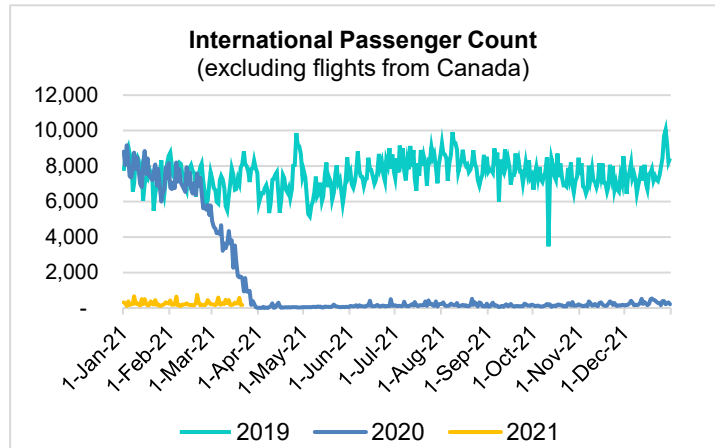
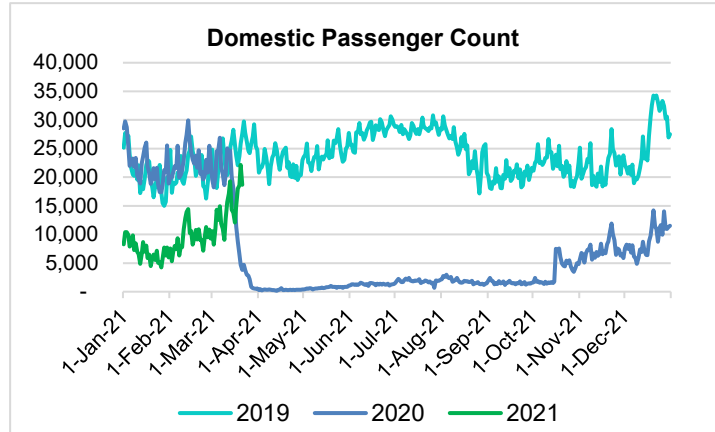
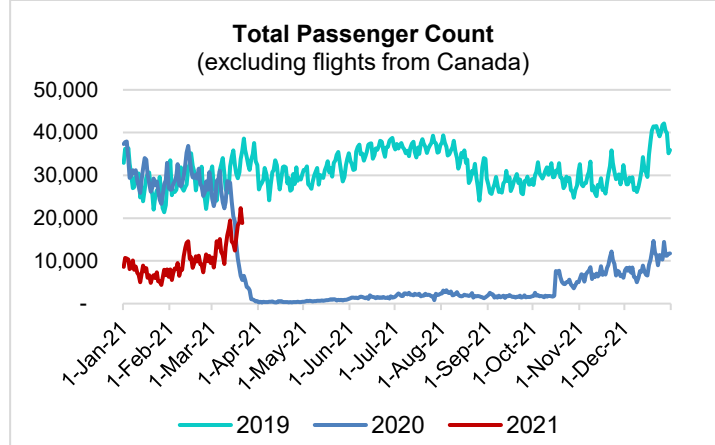
HTA COVID-19 UPDATE

(Issued: 3/22/21 @ 4:30pm)

| Reason for Trip by Arrival Airport - Transpacific Screened Passengers as of 03/21/21 | Honolulu (HNL) | Kahului (OGG) | Kona (KOA) | Hilo (ITO) | Lihue (LIH) | Grand Total |
|--|----------------|---------------|--------------|------------|-------------|---------------|
| Airline Crew | 488 | 250 | 108 | 0 | 20 | 866 |
| Connecting Flight (Transit) | 387 | 67 | 3 | 0 | 3 | 460 |
| Corporate Meeting | 11 | 7 | 9 | 0 | 2 | 29 |
| Essential Worker | 162 | 26 | 16 | 0 | 8 | 212 |
| Honeymoon | 28 | 17 | 2 | 0 | 0 | 47 |
| Incentive Trip | 3 | 1 | 0 | 0 | 0 | 4 |
| Intended Resident | 83 | 12 | 16 | 0 | 2 | 113 |
| Military or Federal Government | 131 | 5 | 0 | 0 | 5 | 141 |
| Other | 59 | 25 | 11 | 0 | 3 | 98 |
| Other Business | 101 | 33 | 25 | 0 | 6 | 165 |
| Pleasure/Vacation | 5,039 | 5,546 | 2,161 | 0 | 148 | 12,894 |
| Returning Resident | 3,052 | 575 | 269 | 0 | 35 | 3,931 |
| Sports Event | 1 | 0 | 0 | 0 | 0 | 1 |
| To Attend School | 46 | 1 | 4 | 0 | 0 | 51 |
| To Get Married | 0 | 1 | 0 | 0 | 0 | 1 |
| Visiting Friends or Relatives | 905 | 281 | 229 | 0 | 18 | 1,433 |
| Grand Total | 10,496 | 6,847 | 2,853 | 0 | 250 | 20,446 |

Source: Safe Travels program developed by the State of Hawaii Office of Enterprise Technology Services

Note: The data is preliminary and subject to change



Daily Passenger Count Table

| 03/21/2021 | Domestic | International | Total |
|------------------|----------|---------------|-------|
| Oahu | 9765 | 170 | 9935 |
| Maui | 6204 | | 6204 |
| Island of Hawaii | 2474 | | 2474 |
| Kauai | 214 | | 214 |
| State | 18657 | 170 | 18827 |

Novel Coronavirus in Hawaii

COVID-19 Positive Cases

Cumulative totals as of 12:00pm on March 22, 2021

| Total Confirmed Cases | 28,851* (79 new) |
|---------------------------|------------------|
| Hawaii | 2,384 |
| Kauai | 187 |
| Lanai | 109 |
| Maui | 2629† |
| Molokai | 33 |
| Oahu | 22,610 |
| Out of State | 899 |
| Pending | 0 |
| Required Hospitalization | 1953‡ |
| Hawaii Deaths | 454 |
| Cases in the past 14 days | 886* |

Footnotes for COVID-19 Cases

*As a result of updated information, one case on Oahu was removed from the counts.

**Using cases reported in the past 14 days provides a rough approximation of the number of cases currently meeting criteria for isolation. This proxy number for "active cases" resolves classification issues for cases unable to be reached or who are out of jurisdiction, for whom precise release from isolation date may not be possible to determine. It is also not influenced by lags in data entry. (This total does not include Hawaii residents diagnosed outside of Hawaii)

†One case is a Lanai resident whose exposure is on Maui Island and who will be remaining on Maui Island for the interim.

‡Includes Hawaii residents hospitalized out of state.

§Includes cases that meet isolation release criteria (Isolation should be maintained until at least 24 hours after resolution of fever and myalgia without the use of antipyretics OR at least 10 days have passed since symptom onset, whichever is longer). (The cases that have died and one case that has left the jurisdiction have been removed from these counts). Positive cases include confirmed cases, and Hawaii residents and non-residents; data are preliminary and subject to change. Note that CDC provides case counts according to states of residence.

Domestic by Island Month-to-Date and Year-to-Date Daily Passenger Volume

2021 Volume versus 2020 Volume

Through March 21, 2021

March 2021 (Month-to-Date through March 21)

| | 2021 | 2020 | Volume Change | Percent Change |
|-------------------|----------------|----------------|----------------|----------------|
| Honolulu | 155,512 | 215,933 | -60,421 | -28.0% |
| Maui County | 97,203 | 97,561 | -358 | -0.4% |
| Island of Hawai'i | 44,823 | 48,984 | -4,161 | -8.5% |
| Kaua'i | 3,664 | 34,954 | -31,290 | -89.5% |
| Total | 301,202 | 397,432 | -96,230 | -24.2% |

2021 (Year-to-Date through March 21)

| | 2021 | 2020 | Volume Change | Percent Change |
|-------------------|----------------|------------------|-----------------|----------------|
| Honolulu | 417,181 | 952,927 | -535,746 | -56.2% |
| Maui County | 245,207 | 438,726 | -193,519 | -44.1% |
| Island of Hawai'i | 114,516 | 214,515 | -99,999 | -46.6% |
| Kaua'i | 8,371 | 148,699 | -140,328 | -94.4% |
| Total | 785,275 | 1,754,867 | -969,592 | -55.3% |

Source: HVCB analysis based on data from DBEDT

Note: Passenger volume figures include both visitors and residents. Total includes other international passengers. 2020 includes one additional day due to Leap Year (February 29th, 2020).

Domestic Only March 2021 (Month-to-Date through March 21)

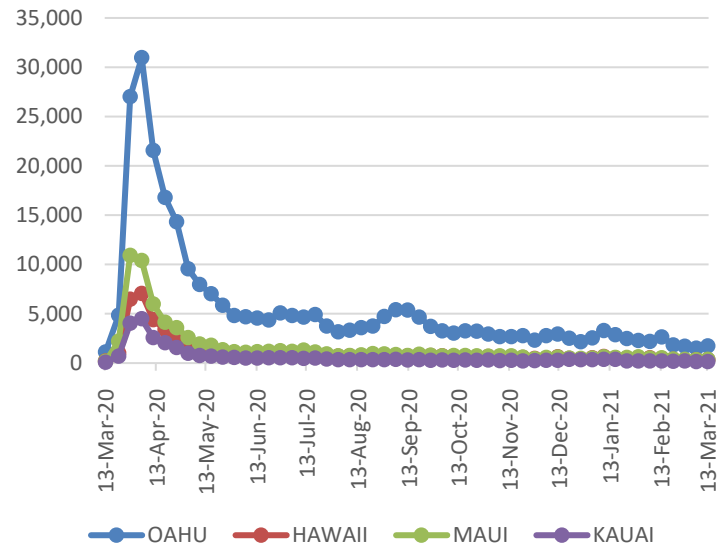
| | 2019 | 2020 | 2021 | 2020 vs 2021 Volume Change | 2020 vs 2021 Percent Change |
|-------------------|----------------|----------------|----------------|-------------------------------|--------------------------------|
| Honolulu | 262,170 | 215,933 | 155,512 | -60,421 | -28.0% |
| Maui | 121,478 | 97,561 | 97,203 | -358 | -0.4% |
| Island of Hawai'i | 61,070 | 48,984 | 44,823 | -4,161 | -8.5% |
| Kaua'i | 43,637 | 34,954 | 3,664 | -31,290 | -89.5% |
| Total | 488,355 | 397,432 | 301,202 | -96,230 | -24.2% |

Domestic Only 2021 (Year-to-Date through March 21)

| | 2019 | 2020 | 2021 | 2020 vs 2021 Volume Change | 2020 vs 2021 Percent Change |
|-------------------|------------------|------------------|----------------|-------------------------------|--------------------------------|
| Honolulu | 932,721 | 952,927 | 417,181 | -535,746 | -56.2% |
| Maui | 418,099 | 438,726 | 245,207 | -193,519 | -44.1% |
| Island of Hawai'i | 213,667 | 214,515 | 114,516 | -99,999 | -46.6% |
| Kaua'i | 151,524 | 148,699 | 8,371 | -140,328 | -94.4% |
| Total | 1,716,011 | 1,754,867 | 785,275 | -969,592 | -55.3% |

Note: Passenger volume figures include both visitors and residents. 2020 includes one additional day due to Leap Year (February 29th, 2020).

2021 Initial Weekly Unemployment Claims by Island



Weekly Unemployment Initial Claims: March 13, 2021

| | |
|--|--------------|
| State of Hawaii | 2,699 |
| C&C of Oahu | 1,720 |
| Honolulu | 727 |
| Kaneohe | 156 |
| Waipahu | 837 |
| Hawaii County | 326 |
| Hilo | 184 |
| Kona | 142 |
| Maui County | 380 |
| Wailuku | 370 |
| Molokai | 10 |
| Kauai County | 157 |
| Agent (filed in Hawaii against another state) | 116 |

News Highlights

March 22, 2021

KHON2: [US data shows AstraZeneca vaccine effective for all ages; 79% effective](#)

KITV4: [Concern over spring break travelers spreading the coronavirus](#)

Honolulu Civil Beat: [A Hawaii 'Vaccine Passport' Could Open Door To Weddings, Concerts And More Tourism](#)

Maui Now: [Maui Mayor Eyes Restrictions in Virus Cluster Areas: "We're at a Crucial Point"](#)

Hawaii Tribune-Herald: [Would higher taxes mean fewer doctors? Some fear increase could dissuade physicians from moving to state](#)

Associated Press: [A rapid COVID-19 vaccine rollout backfired in some US states](#)

Fox News: ['Dire' impact of coronavirus forces legendary Love's Bakery of Hawaii to close](#)

New York Post: [Three fully-vaccinated Hawaii residents infected with coronavirus](#)

Travel Pulse: [COVID-19 US Travel Restrictions: Updated State-by-State Guide for March 2021](#)

Helpful Resources

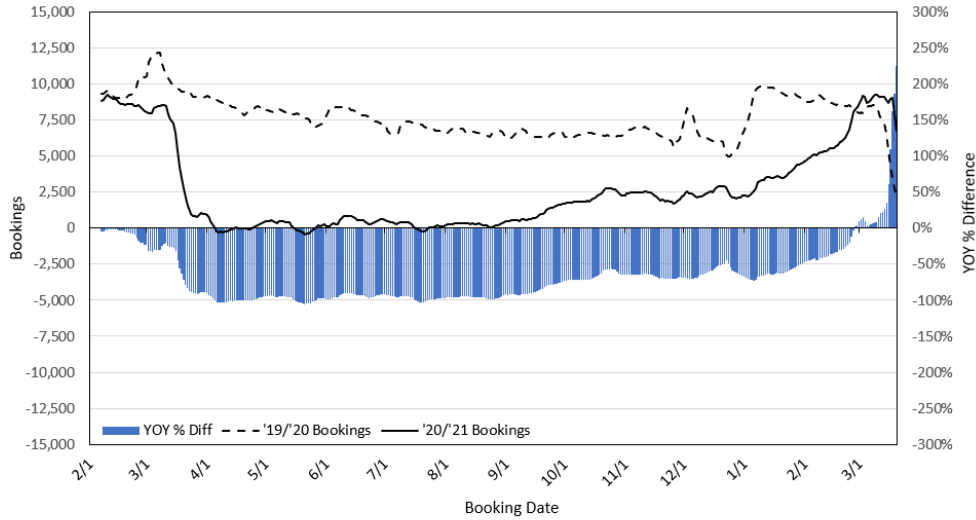
Department of Health
<https://hawaiiicovid19.com/>

Hawaii Tourism Authority
<https://www.hawaiitourismauthority.org/covid-19-updates/>

Dept. of Business, Economic Development & Tourism
<https://dbedt.hawaii.gov/economic/covid19/>

Department of Transportation
<https://hidot.hawaii.gov/coronavirus/>

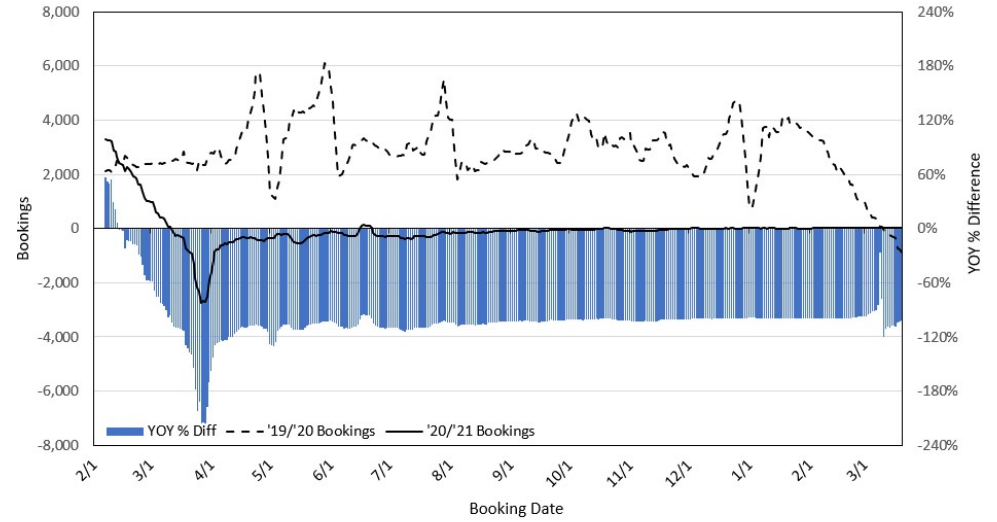
**Travel Agency Bookings to Hawaii for Future Arrivals*
Based on a 7-day Moving Average as of March 20, 2021
U.S.**



*Future Arrivals refers to all arrivals that are 'future' relative to the referenced booking date.
Source: Global Agency Pro

Update: Mar 20, 2021

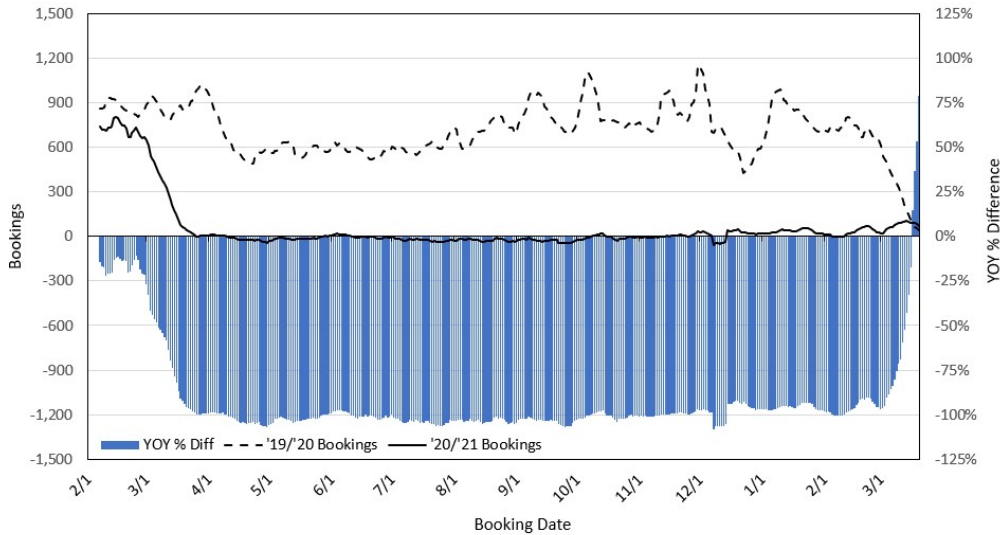
**Travel Agency Bookings to Hawaii for Future Arrivals*
Based on a 7-day Moving Average as of March 20, 2021
Japan**



*Future Arrivals refers to all arrivals that are 'future' relative to the referenced booking date.
Source: Global Agency Pro

Update: Mar 20, 2021

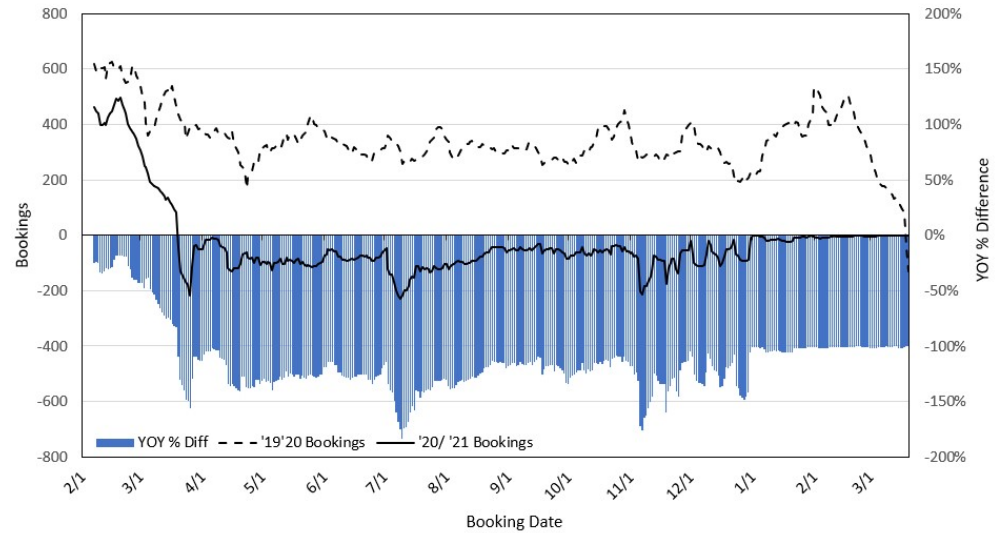
**Travel Agency Bookings to Hawaii for Future Arrivals*
Based on a 7-day Moving Average as of March 20, 2021
Canada**



*Future Arrivals refers to all arrivals that are 'future' relative to the referenced booking date.
Source: Global Agency Pro

Update: Mar 20, 2021

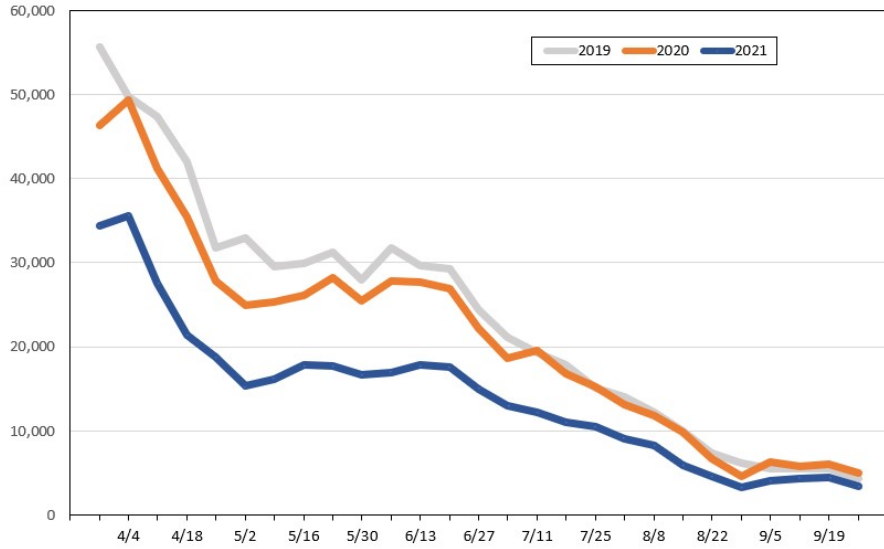
**Travel Agency Bookings to Hawaii for Future Arrivals*
Based on a 7-day Moving Average as of March 20, 2021
Australia**



*Future Arrivals refers to all arrivals that are 'future' relative to the referenced booking date.
Source: Global Agency Pro

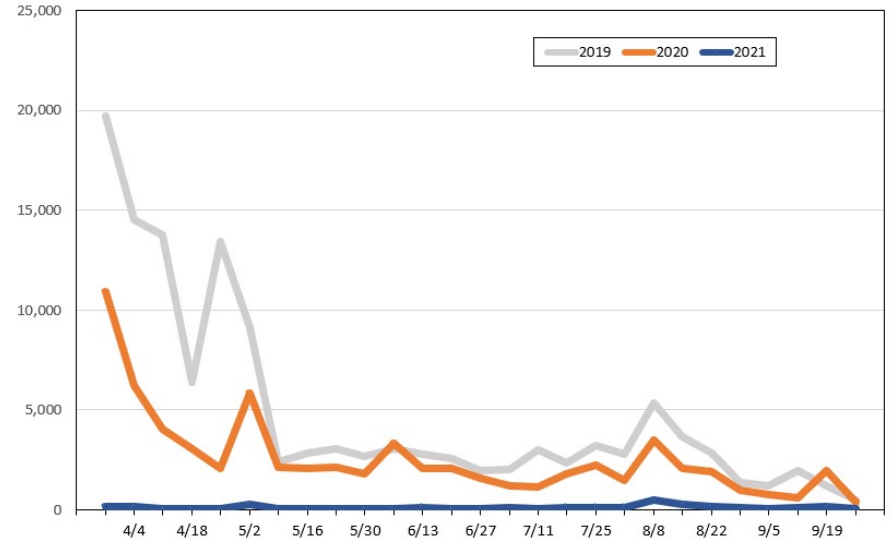
Update: Mar 20, 2021

Travel Agency Weekly Bookings for Future Travel to Hawai'i as of March 20, 2021
U.S.



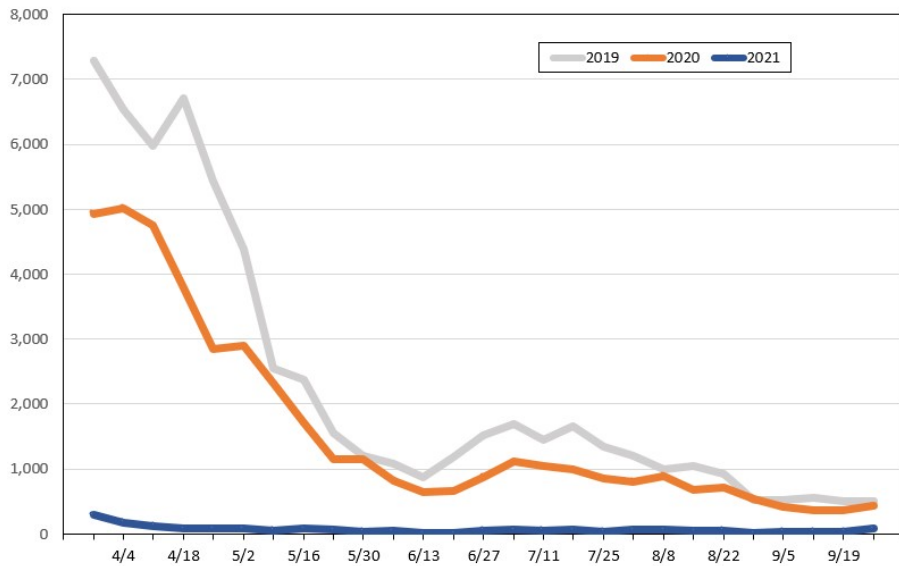
Source: Global Agency Pro, as of March 20, 2021

Travel Agency Weekly Bookings for Future Travel to Hawai'i as of March 20, 2021
Japan



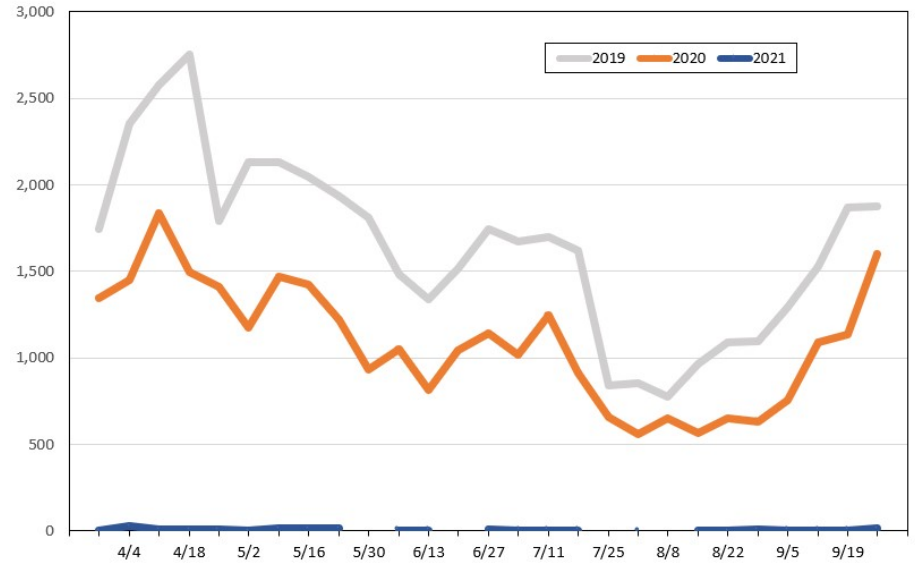
Source: Global Agency Pro, as of March 20, 2021

Travel Agency Weekly Bookings for Future Travel to Hawai'i as of March 20, 2021
Canada



Source: Global Agency Pro, as of March 20, 2021

Travel Agency Weekly Bookings for Future Travel to Hawai'i as of March 20, 2021
Australia



Source: Global Agency Pro, as of March 20, 2021