

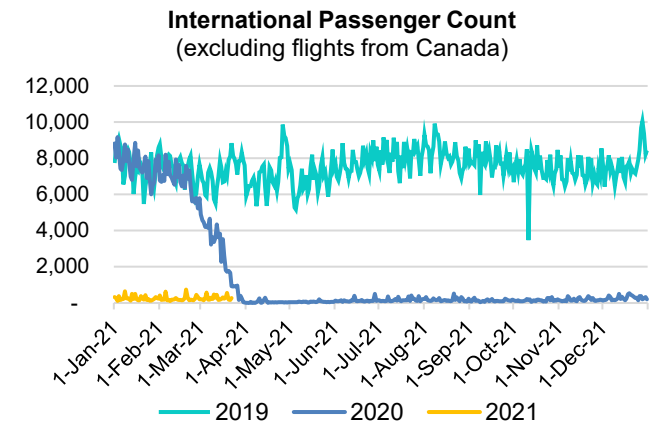
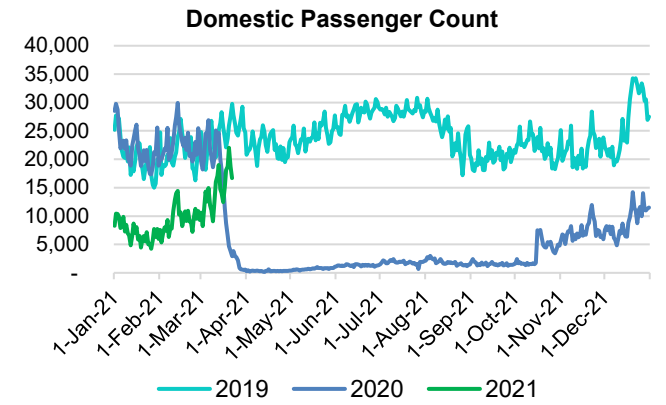
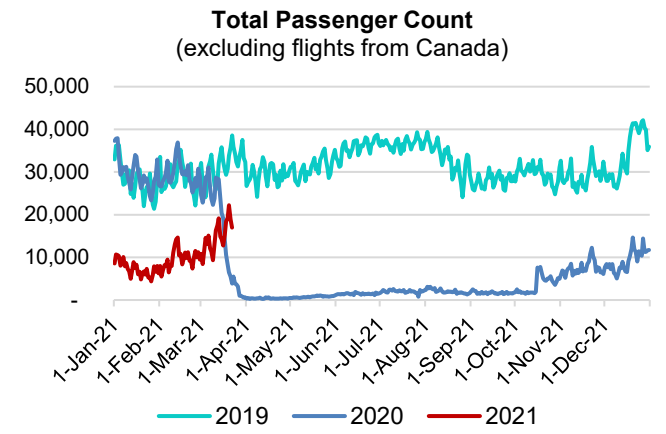
# HTA COVID-19 UPDATE

(Issued: 3/23/21 @ 4:30pm)

Reason for Trip by Arrival Airport - Transpacific Screened Passengers as of 03/22/21	Honolulu (HNL)	Kahului (OGG)	Kona (KOA)	Hilo (ITO)	Lihue (LIH)	Grand Total
Airline Crew	455	240	112	0	30	837
Connecting Flight (Transit)	407	52	3	0	0	462
Corporate Meeting	10	4	5	0	0	19
Essential Worker	151	38	16	0	4	209
Honeymoon	21	28	2	0	0	51
Incentive Trip	6	0	0	0	0	6
Intended Resident	128	16	18	0	3	165
Military or Federal Government	117	0	1	0	0	118
Other	65	18	10	0	3	96
Other Business	120	36	23	0	3	182
Pleasure/Vacation	4,876	4,526	1,823	0	158	11,383
Returning Resident	2,026	494	212	0	62	2,794
To Attend School	23	0	1	0	0	24
To Get Married	6	17	0	0	0	23
Transit	2	0	0	0	0	2
Visiting Friends or Relatives	1,140	333	268	0	18	1,759
<b>Grand Total</b>	<b>9,553</b>	<b>5,802</b>	<b>2,494</b>	<b>0</b>	<b>281</b>	<b>18,130</b>

Source: Safe Travels program developed by the State of Hawaii Office of Enterprise Technology Services

Note: The data is preliminary and subject to change



## Daily Passenger Count Table

03/22/2021	Domestic	International	Total
Oahu	8935	272	9207
Maui	5235		5235
Island of Hawaii	2296		2296
Kauai	217		217
State	16683	272	16955

## Novel Coronavirus in Hawaii

### COVID-19 Positive Cases

Cumulative totals as of 12:00pm on March 23, 2021

Total Confirmed Cases	28,892* (41 new)
Hawaii	2,385
Kauai	187
Lanai	110
Maui	2637†
Molokai	33
Oahu	22,638
Out of State	902
Pending	0
Required Hospitalization	1957‡
Hawaii Deaths	454
Cases in the past 14 days	885*

### Footnotes for COVID-19 Cases

\*As a result of updated information, one case on Oahu was removed from the counts.

\*\*Using cases reported in the past 14 days provides a rough approximation of the number of cases currently meeting criteria for isolation. This proxy number for "active cases" resolves classification issues for cases unable to be reached or who are out of jurisdiction, for whom precise release from isolation date may not be possible to determine. It is also not influenced by lags in data entry. (This total does not include Hawaii residents diagnosed outside of Hawaii)

†One case is a Lanai resident whose exposure is on Maui Island and who will be remaining on Maui Island for the interim.

‡Includes Hawaii residents hospitalized out of state.

§Includes cases that meet isolation release criteria (Isolation should be maintained until at least 24 hours after resolution of fever and myalgia without the use of antipyretics OR at least 10 days have passed since symptom onset, whichever is longer). (The cases that have died and one case that has left the jurisdiction have been removed from these counts). Positive cases include confirmed cases, and Hawaii residents and non-residents; data are preliminary and subject to change. Note that CDC provides case counts according to states of residence.

Domestic Only March 2021 (Month-to-Date through March 22)

	2019	2020	2021	Volume Change	Percent Change
Honolulu	276,638	218,678	164,447	-54,231	-24.8%
Maui	128,610	98,143	103,666	+5,523	+5.6%
Island of Hawai'i	64,974	49,335	47,003	-2,332	-4.7%
Kaua'i	45,763	35,109	3,881	-31,228	-88.9%
<b>Total</b>	<b>515,985</b>	<b>401,265</b>	<b>318,997</b>	<b>-82,268</b>	<b>-20.5%</b>

Domestic Only 2021 (Year-to-Date through March 22)

	2019	2020	2021	Volume Change	Percent Change
Honolulu	947,189	955,672	426,116	-529,556	-55.4%
Maui	425,231	439,308	251,670	-187,638	-42.7%
Island of Hawai'i	217,571	214,866	116,696	-98,170	-45.7%
Kaua'i	153,650	148,854	8,588	-140,266	-94.2%
<b>Total</b>	<b>1,743,641</b>	<b>1,758,700</b>	<b>803,070</b>	<b>-955,630</b>	<b>-54.3%</b>

Note: Passenger volume figures include both visitors and residents. 2020 includes one additional day due to Leap Year (February 29th, 2020).

Month-to-Date and Year-to-Date Daily Passenger Volume

2021 Volume versus 2020 Volume  
Through March 22, 2021

March 2021 (Month-to-Date through March 22)

	2021	2020	Volume Change	Percent Change
Domestic	318,997	401,265	-82,268	-20.5%
Japan	1,302	53,585	-52,283	-97.6%
<b>Total</b>	<b>325,092</b>	<b>479,395</b>	<b>-154,303</b>	<b>-32.2%</b>

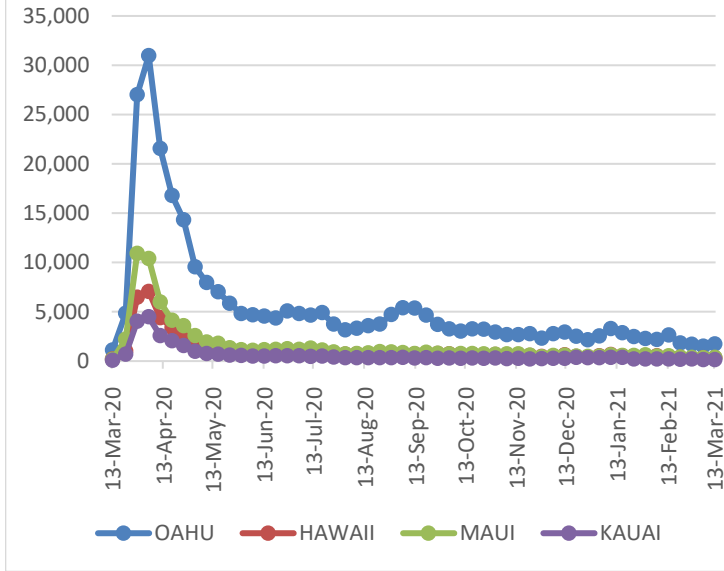
2021 (Year-to-Date through March 22)

	2021	2020	Volume Change	Percent Change
Domestic	803,070	1,758,700	-955,630	-54.3%
Japan	5,152	356,589	-351,437	-98.6%
<b>Total</b>	<b>824,164</b>	<b>2,274,933</b>	<b>-1,450,769</b>	<b>-63.8%</b>

Source: HVCB analysis based on data from DBEDT

Note: Passenger volume figures include both visitors and residents. 2020 includes one additional day due to Leap Year (February 29th, 2020).

2021 Initial Weekly Unemployment Claims by Island



Weekly Unemployment Initial Claims: March 13, 2021

<b>State of Hawaii</b>	<b>2,699</b>
<b>C&amp;C of Oahu</b>	<b>1,720</b>
Honolulu	727
Kaneohe	156
Waipahu	837
<b>Hawaii County</b>	<b>326</b>
Hilo	184
Kona	142
<b>Maui County</b>	<b>380</b>
Wailuku	370
Molokai	10
<b>Kauai County</b>	<b>157</b>
<b>Agent (filed in Hawaii against another state)</b>	<b>116</b>

**News Highlights**

March 23, 2021

**KHON2:** [Travelers can bypass Hawaii's 10-day quarantine by taking these steps](#)

**Hawaii News Now:** [Impacts of pandemic to Hawaii's kupuna go far beyond public health threat](#)

**Hawaii Public Radio:** [COVID-19 Outbreak at Maui Jail Compounded by Staffing Shortages, Contagious Variant](#)

**Pacific Business News:** [In February, Hawaii hotels reported highest occupancy rate since pandemic began](#)

**The Garden Island:** [King Kamehameha celebrations barred due to COVID](#)

**Hawaii Tribune-Herald:** [HMC expands eligibility for COVID vaccine; Hospital opens early registration for people who are 50-65 years old](#)

**West Hawaii Today:** [Vaccine scammers target kupuna](#)

**The Maui News:** [Police issue 189 face mask citations](#)

**Travel Pulse:** [Hawaii Vaccine Passport Could Be Ready by May](#)

**Helpful Resources**

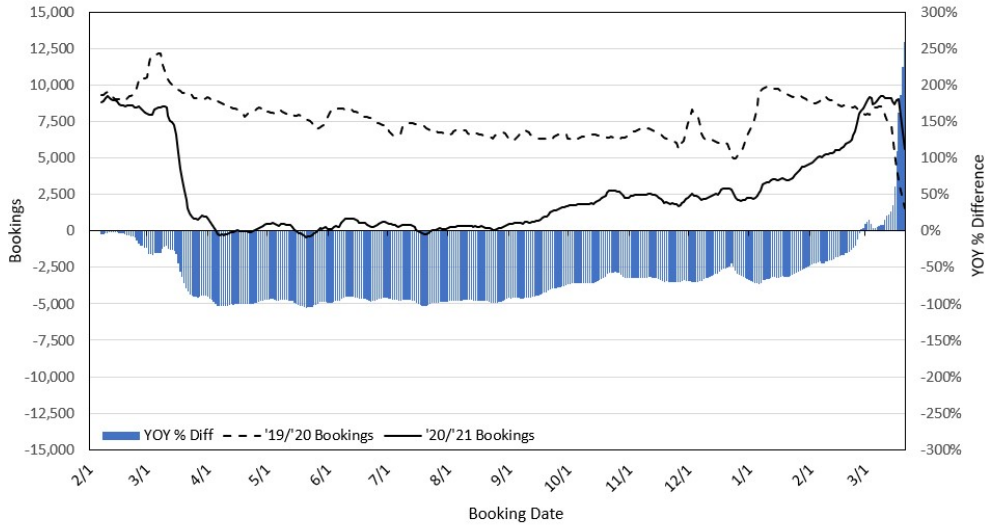
**Department of Health**  
<https://hawaiiicovid19.com/>

**Hawaii Tourism Authority**  
<https://www.hawaiitourismauthority.org/covid-19-updates/>

**Dept. of Business, Economic Development & Tourism**  
<https://dbedt.hawaii.gov/economic/covid19/>

**Department of Transportation**  
<https://hidot.hawaii.gov/coronavirus/>

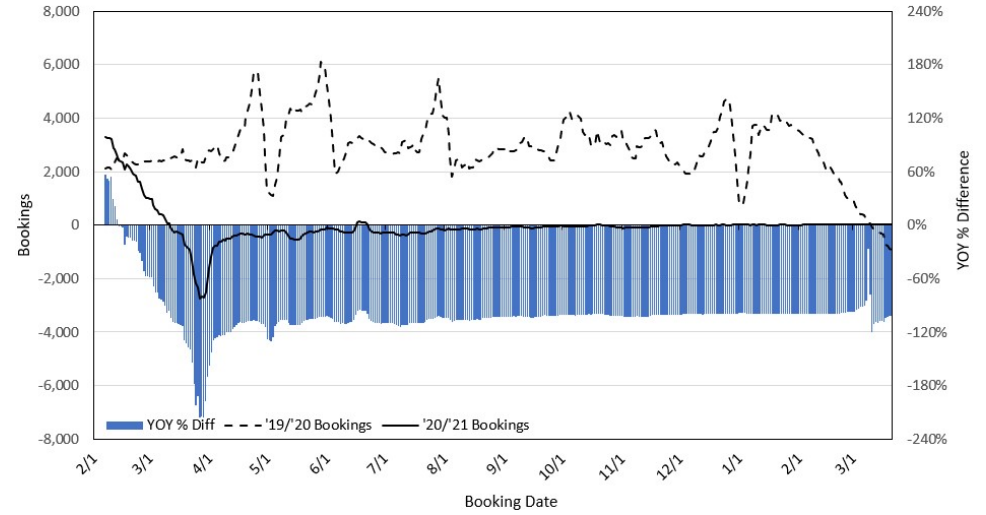
**Travel Agency Bookings to Hawaii for Future Arrivals\*  
Based on a 7-day Moving Average as of March 21, 2021**  
U.S.



\*Future Arrivals refers to all arrivals that are 'future' relative to the referenced booking date.  
Source: Global Agency Pro

Update: Mar 21, 2021

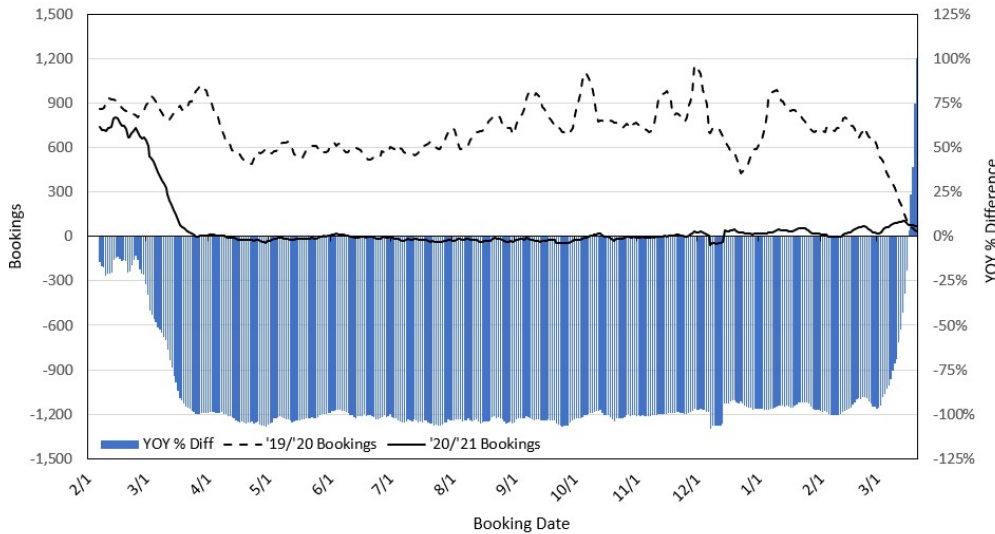
**Travel Agency Bookings to Hawaii for Future Arrivals\*  
Based on a 7-day Moving Average as of March 21, 2021**  
Japan



\*Future Arrivals refers to all arrivals that are 'future' relative to the referenced booking date.  
Source: Global Agency Pro

Update: Mar 21, 2021

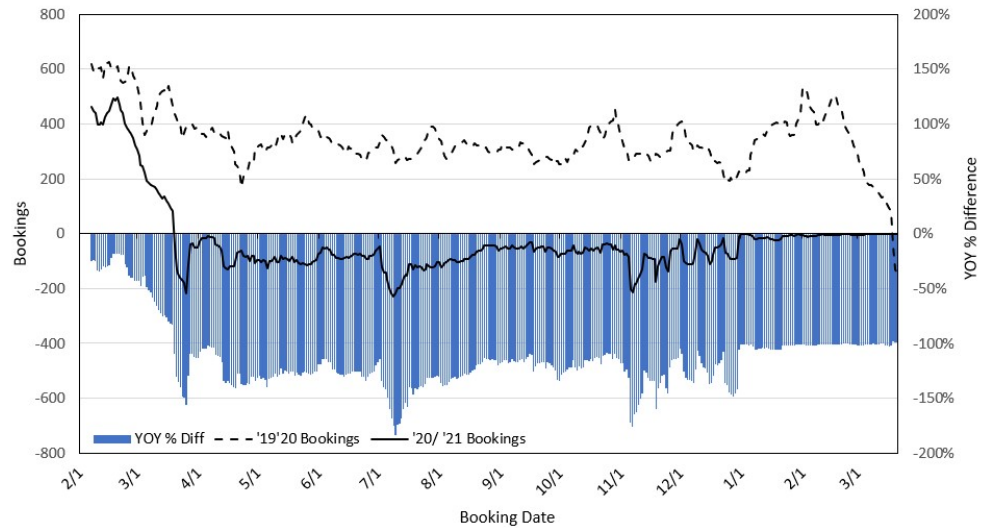
**Travel Agency Bookings to Hawaii for Future Arrivals\*  
Based on a 7-day Moving Average as of March 21, 2021**  
Canada



\*Future Arrivals refers to all arrivals that are 'future' relative to the referenced booking date.  
Source: Global Agency Pro

Update: Mar 21, 2021

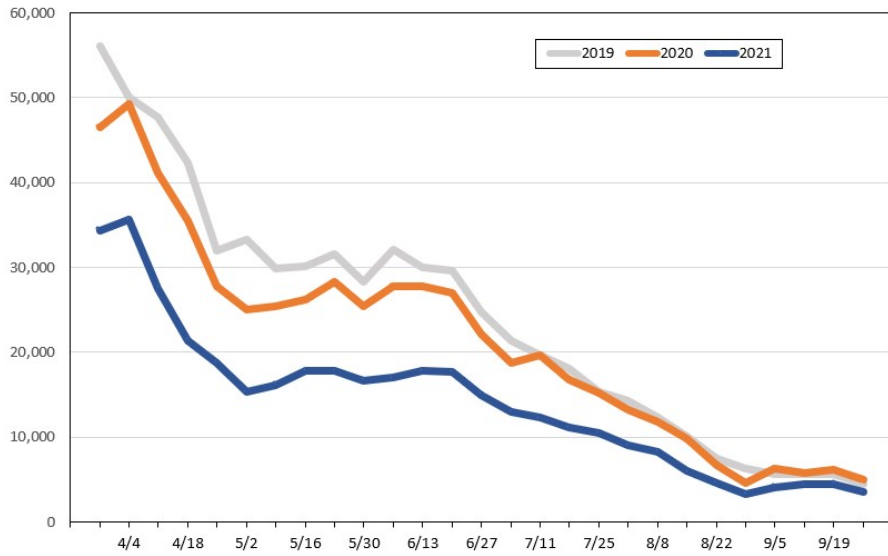
**Travel Agency Bookings to Hawaii for Future Arrivals\*  
Based on a 7-day Moving Average as of March 21, 2021**  
Australia



\*Future Arrivals refers to all arrivals that are 'future' relative to the referenced booking date.  
Source: Global Agency Pro

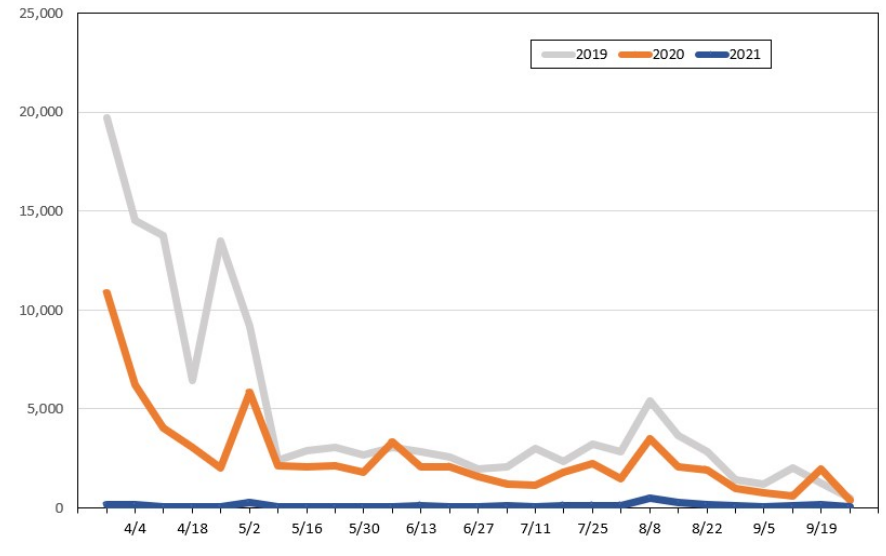
Update: Mar 21, 2021

**Travel Agency Weekly Bookings for Future Travel to Hawai'i as of March 21, 2021**  
U.S.



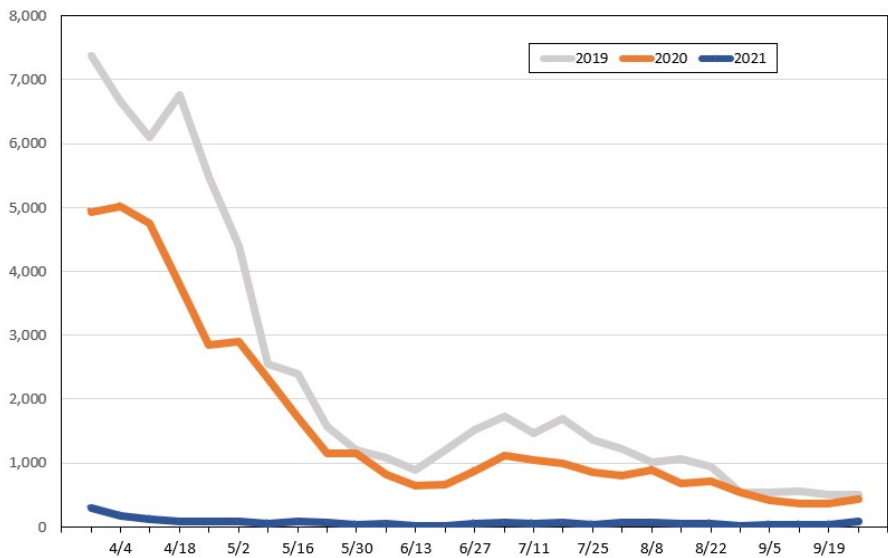
Source: Global Agency Pro, as of March 21, 2021

**Travel Agency Weekly Bookings for Future Travel to Hawai'i as of March 21, 2021**  
Japan



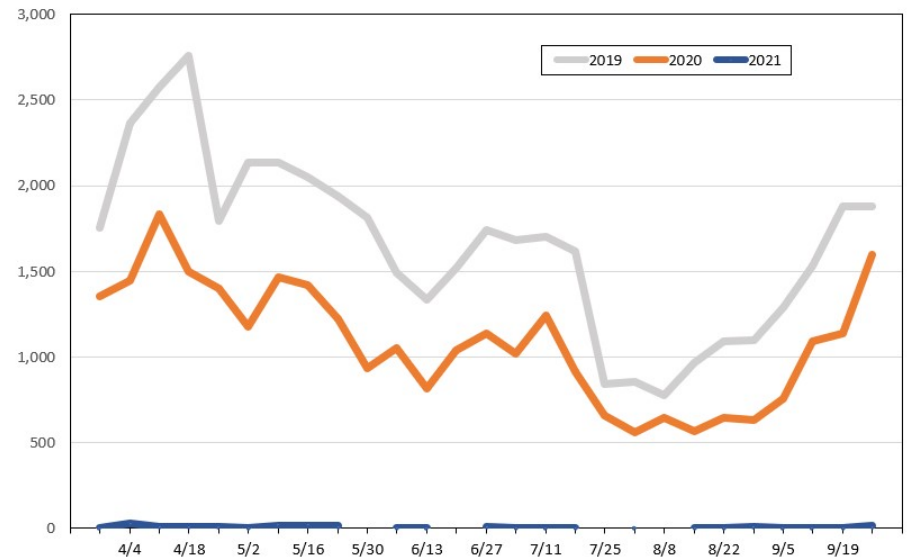
Source: Global Agency Pro, as of March 21, 2021

**Travel Agency Weekly Bookings for Future Travel to Hawai'i as of March 21, 2021**  
Canada



Source: Global Agency Pro, as of March 21, 2021

**Travel Agency Weekly Bookings for Future Travel to Hawai'i as of March 21, 2021**  
Australia



Source: Global Agency Pro, as of March 21, 2021