

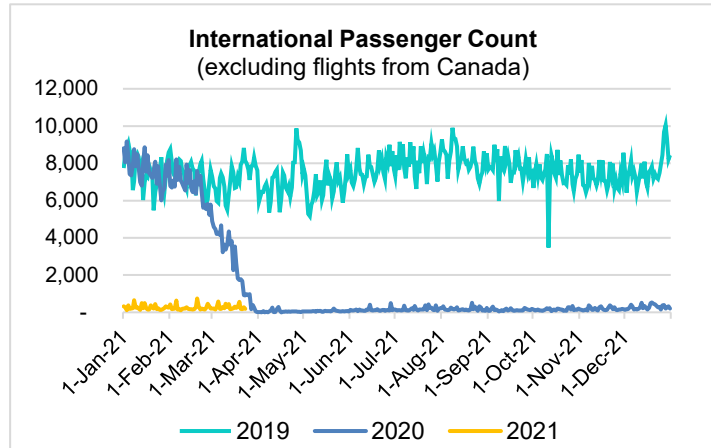
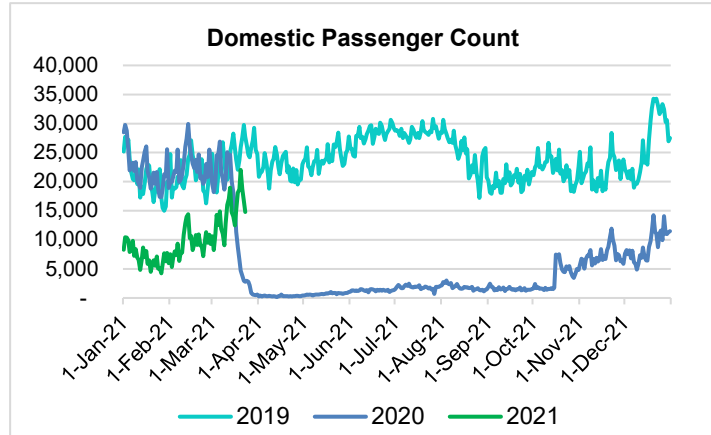
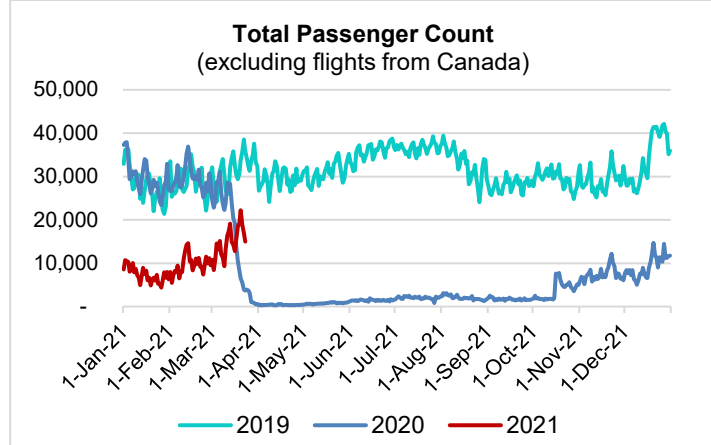
# HTA COVID-19 UPDATE

(Issued: 3/24/21 @ 4:30pm)

Reason for Trip by Arrival Airport - Transpacific Screened Passengers as of 03/23/21	Honolulu (HNL)	Kahului (OGG)	Kona (KOA)	Hilo (ITO)	Lihue (LIH)	Grand Total
Airline Crew	487	228	102	4	7	828
Connecting Flight (Transit)	390	35	3	3	2	433
Corporate Meeting	11	4	0	0	0	15
Essential Worker	139	23	8	2	0	172
Honeymoon	23	11	14	0	0	48
Incentive Trip	2	2	0	0	0	4
Intended Resident	102	27	21	1	0	151
Military or Federal Government	100	0	3	0	0	103
Other	60	13	22	1	3	99
Other Business	75	24	20	0	0	119
Pleasure/Vacation	4,369	3,647	1,501	21	10	9,548
Returning Resident	1,893	353	146	23	10	2,425
Sports Event	2	0	0	0	0	2
To Attend School	17	1	1	0	0	19
To Get Married	4	0	0	0	0	4
Visiting Friends or Relatives	1,338	297	244	23	10	1,912
<b>Grand Total</b>	<b>9,012</b>	<b>4,665</b>	<b>2,085</b>	<b>78</b>	<b>42</b>	<b>15,882</b>

Source: Safe Travels program developed by the State of Hawaii Office of Enterprise Technology Services

Note: The data is preliminary and subject to change



## Daily Passenger Count Table

03/23/2021	Domestic	International	Total
Oahu	8526	192	8718
Maui	4182		4182
Island of Hawaii	2068		2068
Kauai	12		12
State	14788	192	14980

## Novel Coronavirus in Hawaii

### COVID-19 Positive Cases

Cumulative totals as of 12:00pm on March 24, 2021

Total Confirmed Cases	28,892* (41 new)
Hawaii	2,385
Kauai	187
Lanai	110
Maui	2637†
Molokai	33
Oahu	22,638
Out of State	902
Pending	0
Required Hospitalization	1957‡
Hawaii Deaths	454
Cases in the past 14 days	885*

### Footnotes for COVID-19 Cases

\*As a result of updated information, one case on Oahu was removed from the counts.

\*\*Using cases reported in the past 14 days provides a rough approximation of the number of cases currently meeting criteria for isolation. This proxy number for "active cases" resolves classification issues for cases unable to be reached or who are out of jurisdiction, for whom precise release from isolation date may not be possible to determine. It is also not influenced by lags in data entry. (This total does not include Hawaii residents diagnosed outside of Hawaii)

†One case is a Lanai resident whose exposure is on Maui Island and who will be remaining on Maui Island for the interim.

‡Includes Hawaii residents hospitalized out of state.

§Includes cases that meet isolation release criteria (Isolation should be maintained until at least 24 hours after resolution of fever and myalgia without the use of antipyretics OR at least 10 days have passed since symptom onset, whichever is longer). (The cases that have died and one case that has left the jurisdiction have been removed from these counts). Positive cases include confirmed cases, and Hawaii residents and non-residents; data are preliminary and subject to change. Note that CDC provides case counts according to states of residence.

Domestic Only March 2021 (Month-to-Date through March 23)

	2019	2020	2021	Volume Change	Percent Change
Honolulu	290,776	220,642	172,973	-47,669	-21.6%
Maui	136,641	98,621	107,848	+9,227	+9.4%
Island of Hawai'i	69,254	49,749	49,071	-678	-1.4%
Kaua'i	49,057	35,206	3,893	-31,313	-88.9%
<b>Total</b>	<b>545,728</b>	<b>404,218</b>	<b>333,785</b>	<b>-70,433</b>	<b>-17.4%</b>

Domestic Only 2021 (Year-to-Date through March 23)

	2019	2020	2021	Volume Change	Percent Change
Honolulu	961,327	957,636	434,642	-522,994	-54.6%
Maui	433,262	439,786	255,852	-183,934	-41.8%
Island of Hawai'i	221,851	215,280	118,764	-96,516	-44.8%
Kaua'i	156,944	148,951	8,600	-140,351	-94.2%
<b>Total</b>	<b>1,773,384</b>	<b>1,761,653</b>	<b>817,858</b>	<b>-943,795</b>	<b>-53.6%</b>

Note: Passenger volume figures include both visitors and residents. 2020 includes one additional day due to Leap Year (February 29th, 2020).

Month-to-Date and Year-to-Date Daily Passenger Volume

2021 Volume versus 2020 Volume

Through March 23, 2021

March 2021 (Month-to-Date through March 23)

	2021	2020	Volume Change	Percent Change
Domestic	333,785	404,218	-70,433	-17.4%
Japan	1,354	54,100	-52,746	-97.5%
<b>Total</b>	<b>340,072</b>	<b>483,274</b>	<b>-143,202</b>	<b>-29.6%</b>

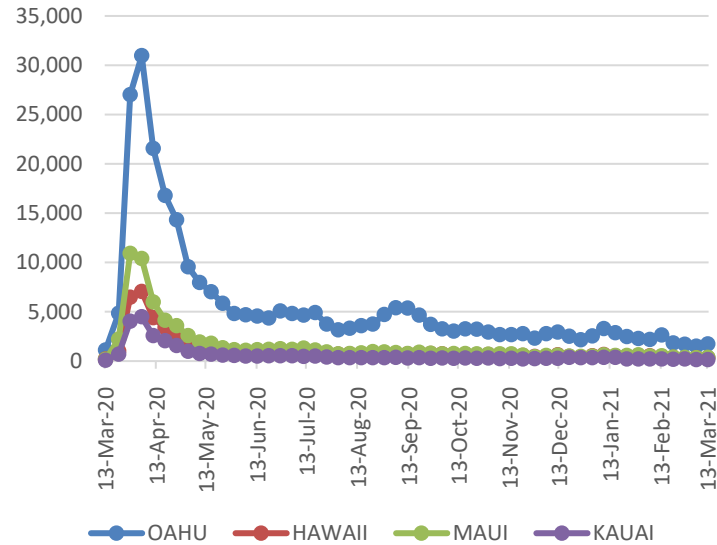
2021 (Year-to-Date through March 23)

	2021	2020	Volume Change	Percent Change
Domestic	817,858	1,761,653	-943,795	-53.6%
Japan	5,204	357,104	-351,900	-98.5%
<b>Total</b>	<b>839,144</b>	<b>2,278,812</b>	<b>-1,439,668</b>	<b>-63.2%</b>

Source: HVCB analysis based on data from DBEDT

Note: Passenger volume figures include both visitors and residents. 2020 includes one additional day due to Leap Year (February 29th, 2020).

2021 Initial Weekly Unemployment Claims by Island



Weekly Unemployment Initial Claims: March 13, 2021

<b>State of Hawaii</b>	<b>2,699</b>
<b>C&amp;C of Oahu</b>	<b>1,720</b>
Honolulu	727
Kaneohe	156
Waipahu	837
<b>Hawaii County</b>	<b>326</b>
Hilo	184
Kona	142
<b>Maui County</b>	<b>380</b>
Wailuku	370
Molokai	10
<b>Kauai County</b>	<b>157</b>
<b>Agent (filed in Hawaii against another state)</b>	<b>116</b>

**News Highlights**

March 24, 2021

**Hawaii News Now:** [Concert in Waianae draws hundreds of people sparking health and safety concerns](#)

**Hawaii News Now:** [US outlook improving as vaccinations rise and deaths fall](#)

**Hawaii News Now:** [Experts: Uptick in spring break visitors a sign that tourism economy is on the mend](#)

**KITV4:** [1,386 COVID-19 vaccine doses compromised at Maui Memorial Medical Center](#)

**The Garden Island:** [COVID vaccine eligibility expanded](#)

**Hawaii Tribune-Herald:** [Kona Community Hospital pre-registering Phase 2 individuals 50 and older for vaccine](#)

**West Hawaii Today:** [Virus relief money plugs hole in proposed Hawaii budget](#)

**Travel Pulse:** [Travel Advisors Mixed on Cruise Lines' Vaccine Requirements](#)

**Smithsonian Magazine:** [Five Things to Know About Vaccine Passports](#)

**Helpful Resources**

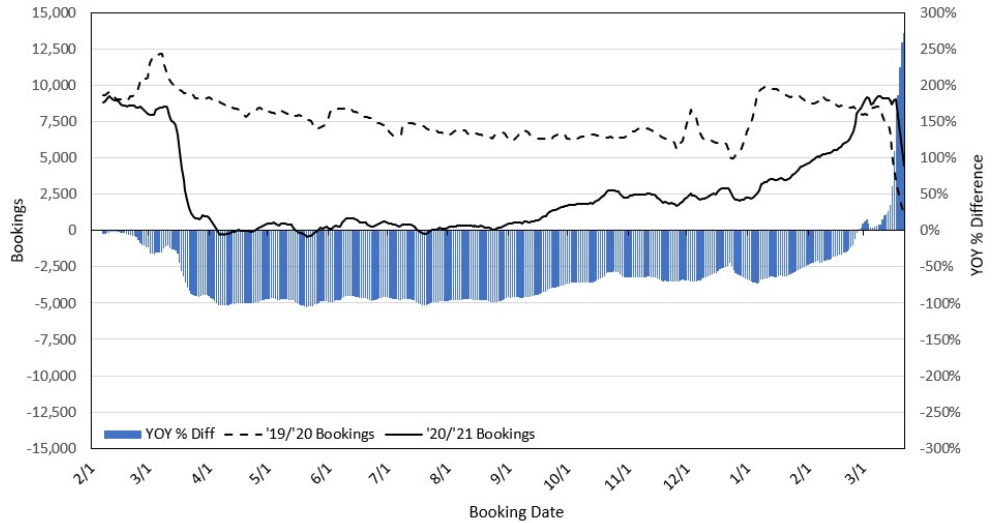
**Department of Health**  
<https://hawaiiicovid19.com/>

**Hawaii Tourism Authority**  
<https://www.hawaiitourismauthority.org/covid-19-updates/>

**Dept. of Business, Economic Development & Tourism**  
<https://dbedt.hawaii.gov/economic/covid19/>

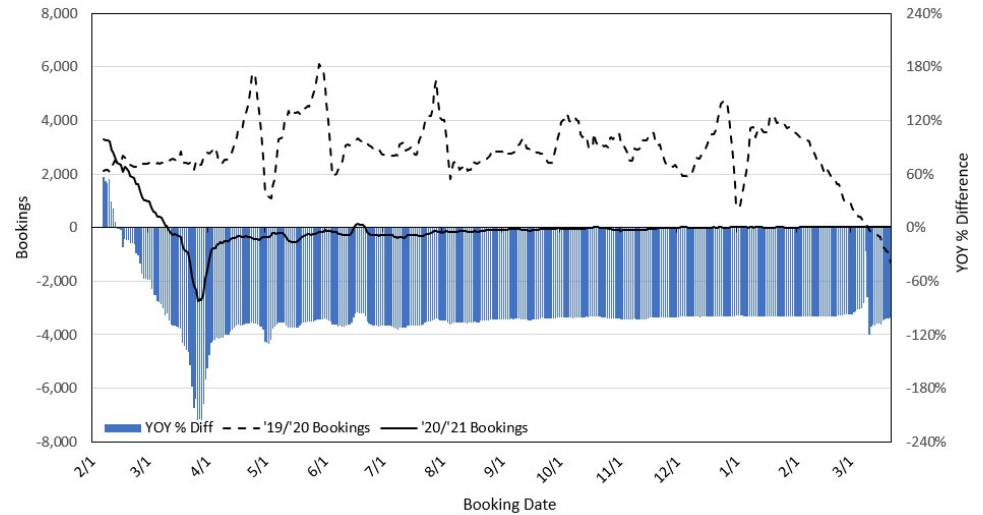
**Department of Transportation**  
<https://hidot.hawaii.gov/coronavirus/>

**Travel Agency Bookings to Hawaii for Future Arrivals\*  
Based on a 7-day Moving Average as of March 22, 2021**  
**U.S.**



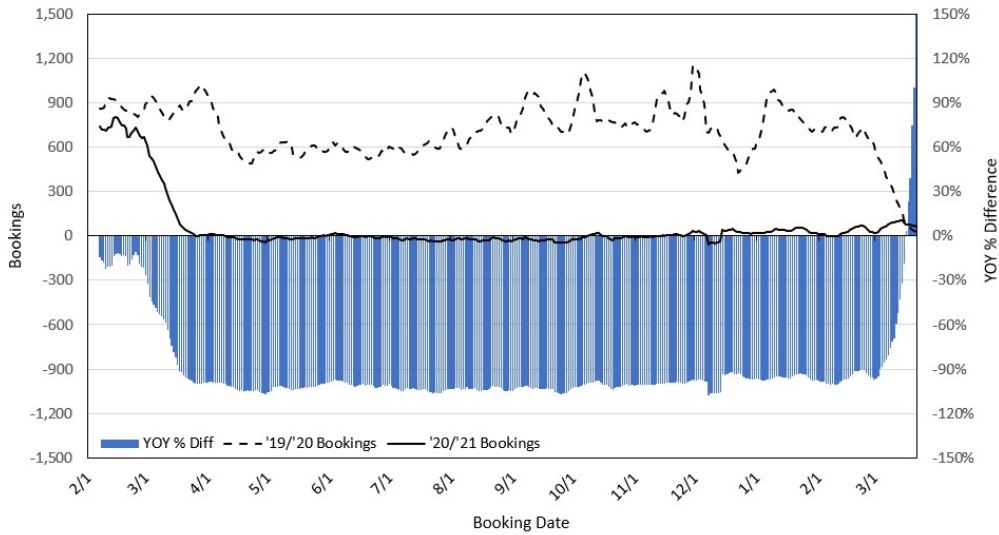
\*Future Arrivals refers to all arrivals that are 'future' relative to the referenced booking date.  
Source: Global Agency Pro  
Update: Mar 22, 2021

**Travel Agency Bookings to Hawaii for Future Arrivals\*  
Based on a 7-day Moving Average as of March 22, 2021**  
**Japan**



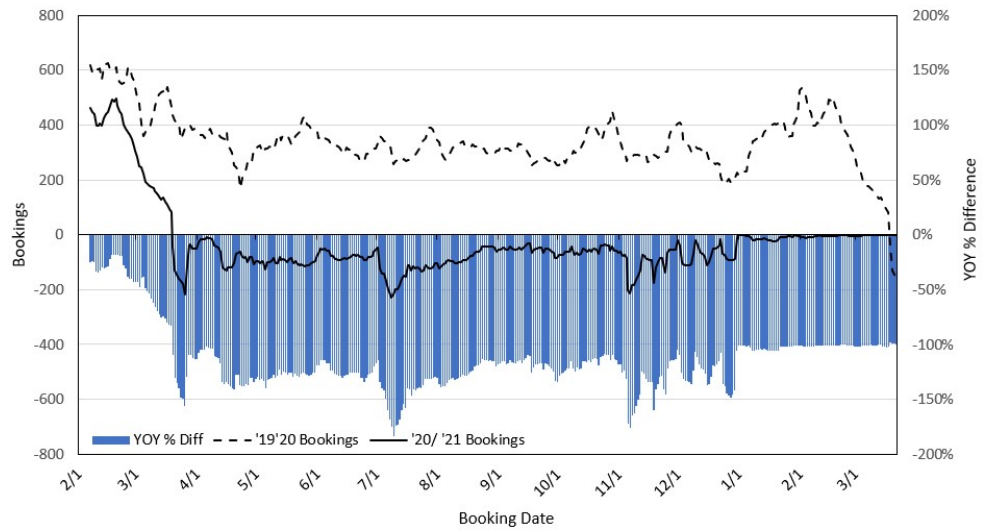
\*Future Arrivals refers to all arrivals that are 'future' relative to the referenced booking date.  
Source: Global Agency Pro  
Update: Mar 22, 2021

**Travel Agency Bookings to Hawaii for Future Arrivals\*  
Based on a 7-day Moving Average as of March 22, 2021**  
**Canada**



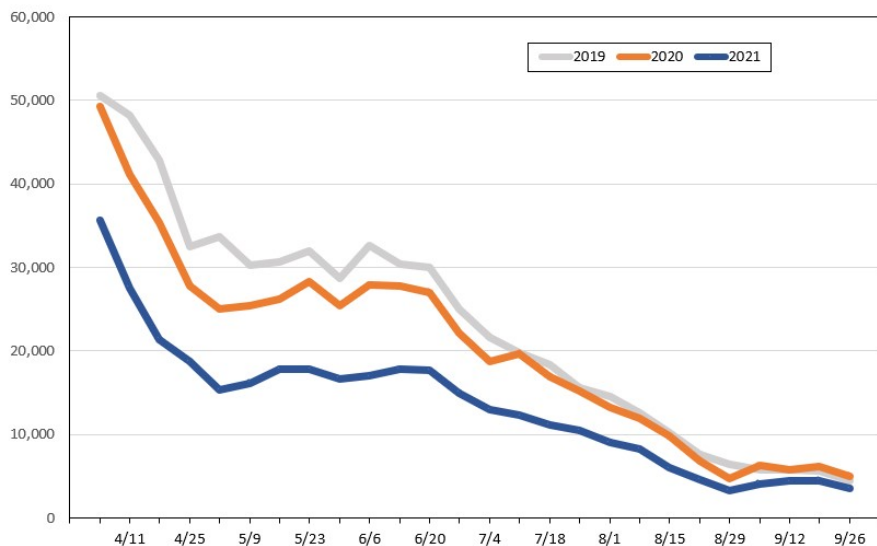
\*Future Arrivals refers to all arrivals that are 'future' relative to the referenced booking date.  
Source: Global Agency Pro  
Update: Mar 22, 2021

**Travel Agency Bookings to Hawaii for Future Arrivals\*  
Based on a 7-day Moving Average as of March 22, 2021**  
**Australia**



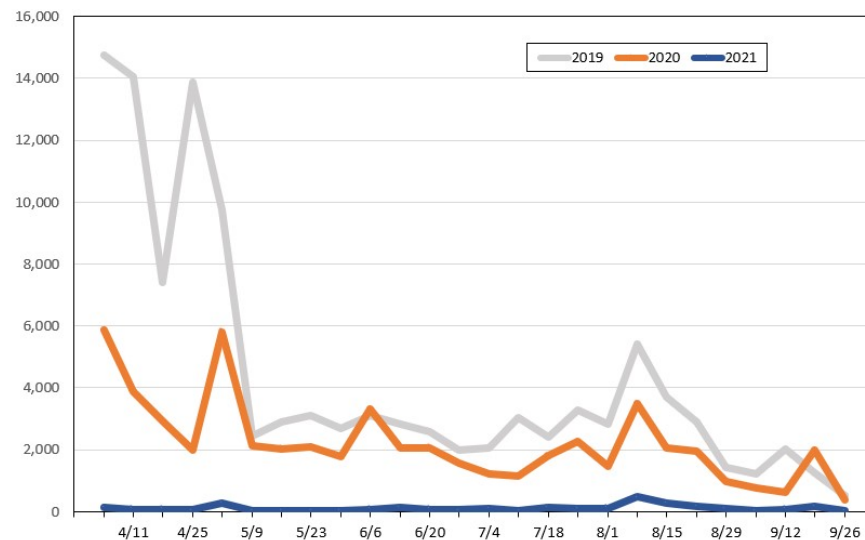
\*Future Arrivals refers to all arrivals that are 'future' relative to the referenced booking date.  
Source: Global Agency Pro  
Update: Mar 22, 2021

**Travel Agency Weekly Bookings for Future Travel to Hawai'i as of March 22, 2021**  
U.S.



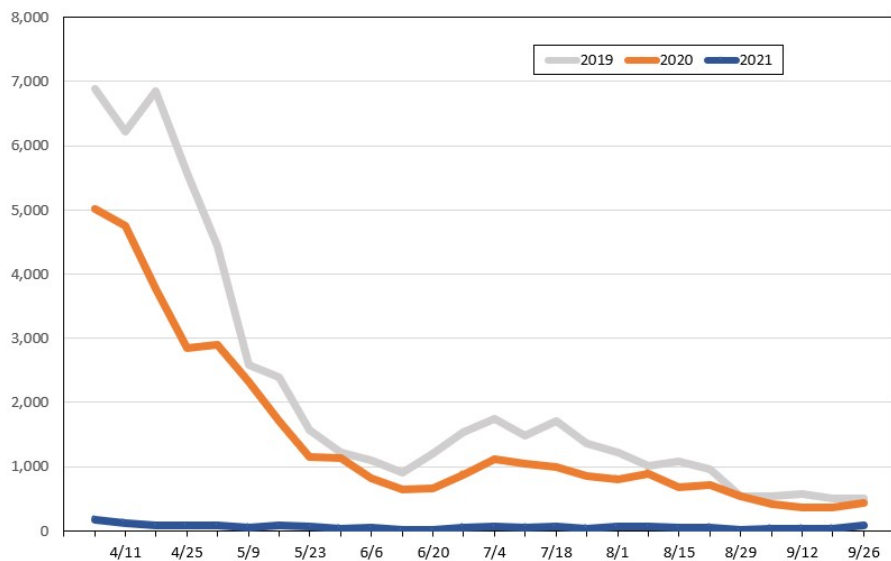
Source: Global Agency Pro, as of March 22, 2021

**Travel Agency Weekly Bookings for Future Travel to Hawai'i as of March 22, 2021**  
Japan



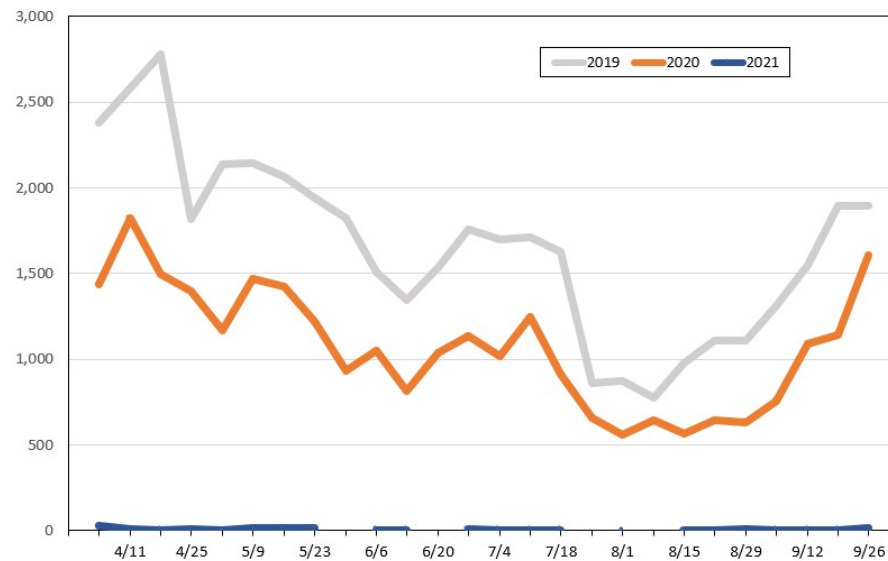
Source: Global Agency Pro, as of March 22, 2021

**Travel Agency Weekly Bookings for Future Travel to Hawai'i as of March 22, 2021**  
Canada



Source: Global Agency Pro, as of March 22, 2021

**Travel Agency Weekly Bookings for Future Travel to Hawai'i as of March 22, 2021**  
Australia



Source: Global Agency Pro, as of March 22, 2021