

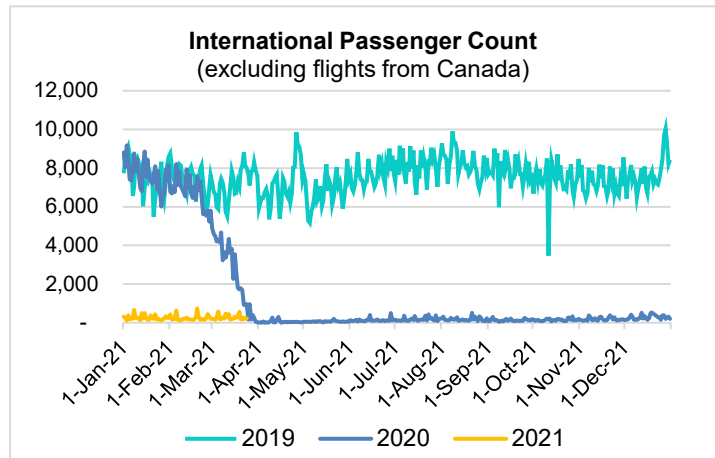
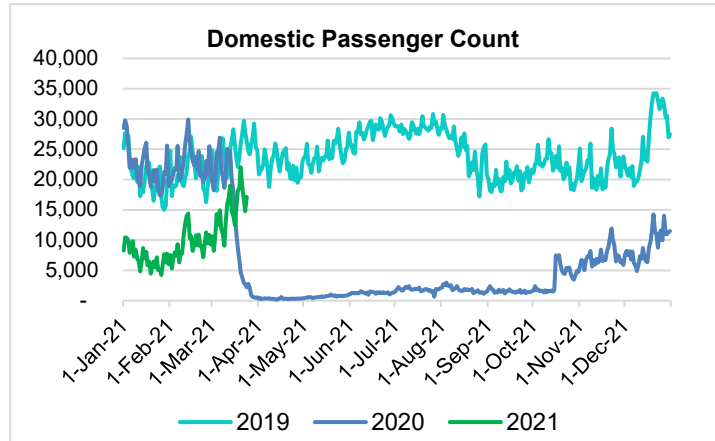
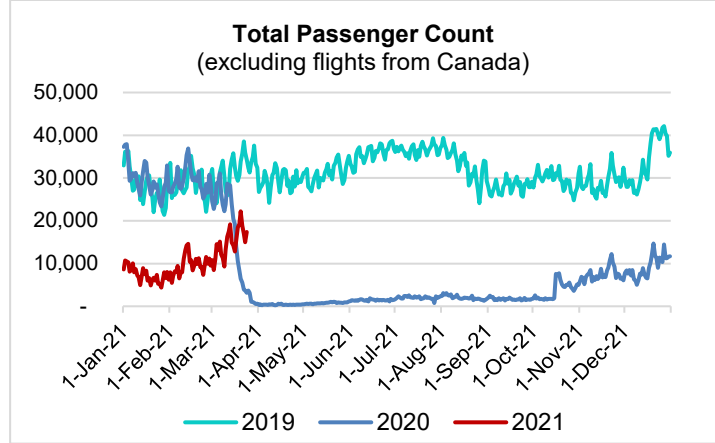
HTA COVID-19 UPDATE

(Issued: 3/25/21 @ 4:30pm)

Reason for Trip by Arrival Airport - Transpacific Screened Passengers as of 03/24/21	Honolulu (HNL)	Kahului (OGG)	Kona (KOA)	Hilo (ITO)	Lihue (LIH)	Grand Total
Airline Crew	471	236	114	0	22	843
Connecting Flight (Transit)	459	32	5	0	0	496
Corporate Meeting	5	4	0	0	0	9
Essential Worker	82	17	5	0	1	105
Honeymoon	13	16	5	0	2	36
Incentive Trip	1	4	0	0	0	5
Intended Resident	86	21	23	0	6	136
Military or Federal Government	98	2	0	0	0	100
Other	71	15	16	0	3	105
Other Business	64	25	21	0	1	111
Pleasure/Vacation	5,750	4,984	1,854	0	140	12,728
Returning Resident	1,298	282	158	0	26	1,764
Sports Event	9	0	0	0	0	9
To Attend School	11	0	0	0	0	11
To Get Married	6	13	2	0	0	21
Visiting Friends or Relatives	1,437	453	352	0	18	2,260
Grand Total	9,861	6,104	2,555	0	219	18,739

Source: Safe Travels program developed by the State of Hawaii Office of Enterprise Technology Services

Note: The data is preliminary and subject to change



Daily Passenger Count Table

03/24/2021	Domestic	International	Total
Oahu	9149	234	9383
Maui	5544		5544
Island of Hawaii	2363		2363
Kauai	133		133
State	17189	234	17423

Novel Coronavirus in Hawaii

COVID-19 Positive Cases

Cumulative totals as of 12:00pm on March 25, 2021

Total Confirmed Cases	29,071* (122 new)
Hawaii	2,404
Kauai	188
Lanai	110
Maui	2679†
Molokai	34
Oahu	22,745
Out of State	911
Pending	0
Required Hospitalization	1963‡
Hawaii Deaths	458
Cases in the past 14 days	957*

Footnotes for COVID-19 Cases

*As a result of updated information, one case on Oahu was removed from the counts.

**Using cases reported in the past 14 days provides a rough approximation of the number of cases currently meeting criteria for isolation. This proxy number for "active cases" resolves classification issues for cases unable to be reached or who are out of jurisdiction, for whom precise release from isolation date may not be possible to determine. It is also not influenced by lags in data entry. (This total does not include Hawaii residents diagnosed outside of Hawaii)

†One case is a Lanai resident whose exposure is on Maui Island and who will be remaining on Maui Island for the interim.

‡Includes Hawaii residents hospitalized out of state.

§Includes cases that meet isolation release criteria (Isolation should be maintained until at least 24 hours after resolution of fever and myalgia without the use of antipyretics OR at least 10 days have passed since symptom onset, whichever is longer). (The cases that have died and one case that has left the jurisdiction have been removed from these counts). Positive cases include confirmed cases, and Hawaii residents and non-residents; data are preliminary and subject to change. Note that CDC provides case counts according to states of residence.

Domestic by Island Month-to-Date and Year-to-Date Daily Passenger Volume

2021 Volume versus 2020 Volume

Through March 24, 2021

March 2021 (Month-to-Date through March 24)

	2019	2020	2021	2019 vs 2021 Volume Change	2019 vs 2021 Percent Change	2020 vs 2021 Volume Change	2020 vs 2021 Percent Change
Honolulu	305,266	222,766	182,122	-123,144	-40.3%	-40,644	-18.2%
Maui County	143,994	98,919	113,392	-30,602	-21.3%	+14,473	+14.6%
Island of Hawai'i	72,641	50,037	51,434	-21,207	-29.2%	+1,397	+2.8%
Kaua'i	51,620	35,273	4,006	-47,614	-92.2%	-31,267	-88.6%
Total	573,521	406,995	350,954	-222,567	-38.8%	-56,041	-13.8%

2021 (Year-to-Date through March 24)

	2019	2020	2021	2019 vs 2021 Volume Change	2019 vs 2021 Percent Change	2020 vs 2021 Volume Change	2020 vs 2021 Percent Change
Honolulu	975,817	959,760	443,791	-532,026	-54.5%	-515,969	-53.8%
Maui County	440,615	440,084	261,396	-179,219	-40.7%	-178,688	-40.6%
Island of Hawai'i	225,238	215,568	121,127	-104,111	-46.2%	-94,441	-43.8%
Kaua'i	159,507	149,018	8,713	-150,794	-94.5%	-140,305	-94.2%
Total	1,801,177	1,764,430	835,027	-966,150	-53.6%	-929,403	-52.7%

Source: HVCB analysis based on data from DBEDT

Note: Passenger volume figures include both visitors and residents. Total includes other international passengers. 2020 includes one additional day due to Leap Year (February 29th, 2020).

Month-to-Date and Year-to-Date Daily Passenger Volume

2021 Volume versus 2020 Volume

Through March 24, 2021

March 2021 (Month-to-Date through March 24)

	2021	2020	Volume Change	Percent Change
Domestic	350,954	406,995	-56,041	-13.8%
Japan	1,354	54,450	-53,096	-97.5%
Total	357,475	486,965	-129,490	-26.6%

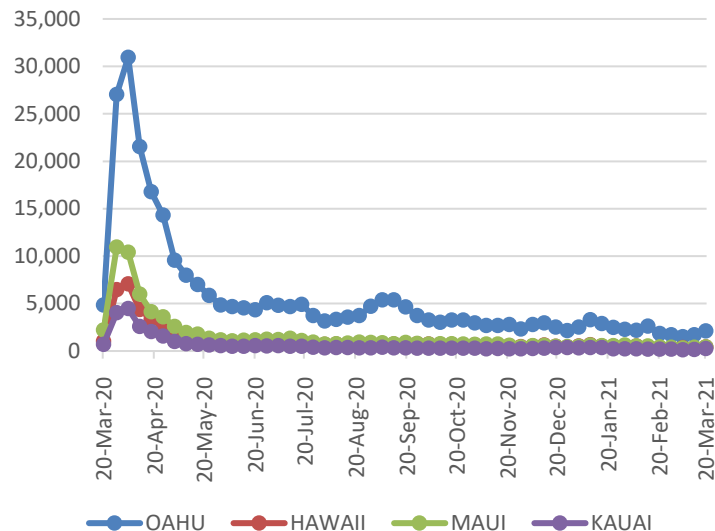
2021 (Year-to-Date through March 24)

	2021	2020	Volume Change	Percent Change
Domestic	835,027	1,764,430	-929,403	-52.7%
Japan	5,204	357,454	-352,250	-98.5%
Total	856,547	2,282,503	-1,425,956	-62.5%

Source: HVCB analysis based on data from DBEDT

Note: Passenger volume figures include both visitors and residents. 2020 includes one additional day due to Leap Year (February 29th, 2020).

2021 Initial Weekly Unemployment Claims by Island



Weekly Unemployment Initial Claims: March 20, 2021

State of Hawaii	3,305
C&C of Oahu	2,097
Honolulu	802
Kaneohe	217
Waipahu	1078
Hawaii County	423
Hilo	301
Kona	122
Maui County	408
Wailuku	401
Molokai	7
Kauai County	248
Agent (filed in Hawaii against another state)	129

News Highlights

March 25, 2021

Honolulu Star Advertiser:

[Coronavirus vaccinations: Hawaii to miss President Joe Biden's goal](#)

Honolulu Star Advertiser: [Hawaii vacation rental outlook brightens, sees dramatic increase in tourism industry](#)

Hawaii Public Radio: [Vaccination Appointment Call Center Opens for Kupuna](#)

West Hawaii Today: [QNHCH reaches 10,000 vaccine milestone](#)

The Points Guy: [Fair warning, Hawaii is packed again with tourists](#)

Travel Pulse: [Consumer Confidence in Travel Gets a Boost as Vaccines Roll Out](#)

Chicago Tribune: [What is a vaccine passport and will you need one to travel?](#)

Travel Weekly: [The new OVERTOURISM debate](#)

Forbes: Hawaii: [An Update On Its 'Vaccine Passport' Program](#)

New York Post: [Hawaii beaches packed with hordes of maskless spring breakers](#)

Helpful Resources

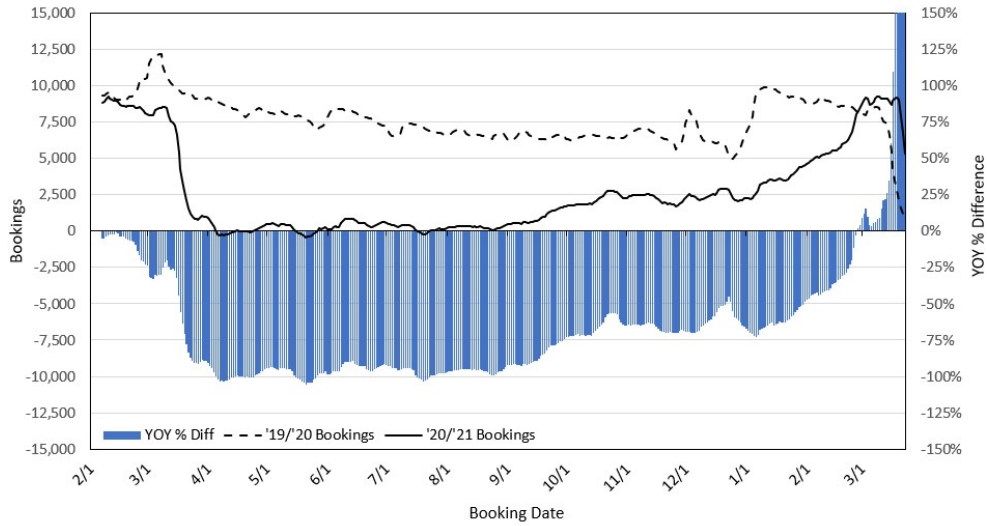
Department of Health
<https://hawaiiicovid19.com/>

Hawaii Tourism Authority
<https://www.hawaiitourismauthority.org/covid-19-updates/>

Dept. of Business, Economic Development & Tourism
<https://dbedt.hawaii.gov/economic/covid19/>

Department of Transportation
<https://hidot.hawaii.gov/coronavirus/>

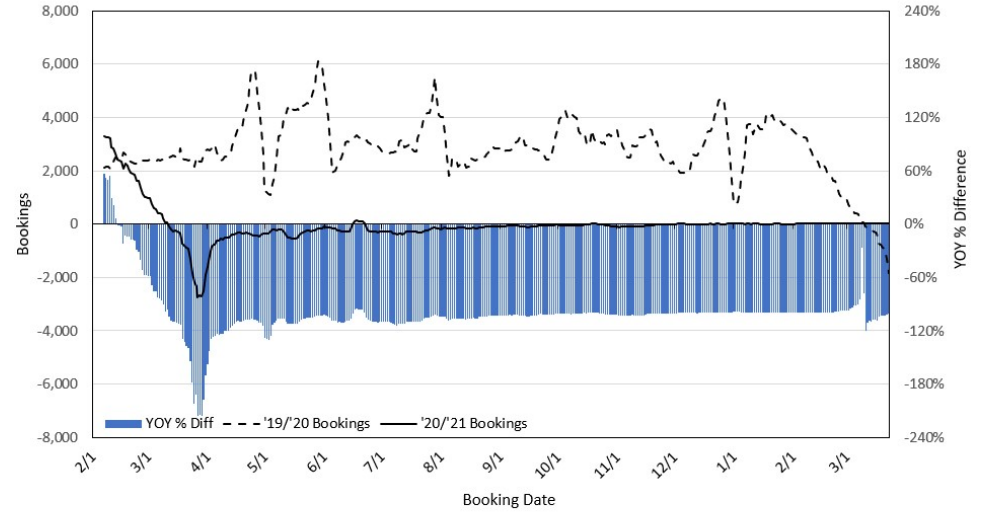
**Travel Agency Bookings to Hawaii for Future Arrivals*
Based on a 7-day Moving Average as of March 23, 2021
U.S.**



*Future Arrivals refers to all arrivals that are 'future' relative to the referenced booking date.
Source: Global Agency Pro

Update: Mar 23, 2021

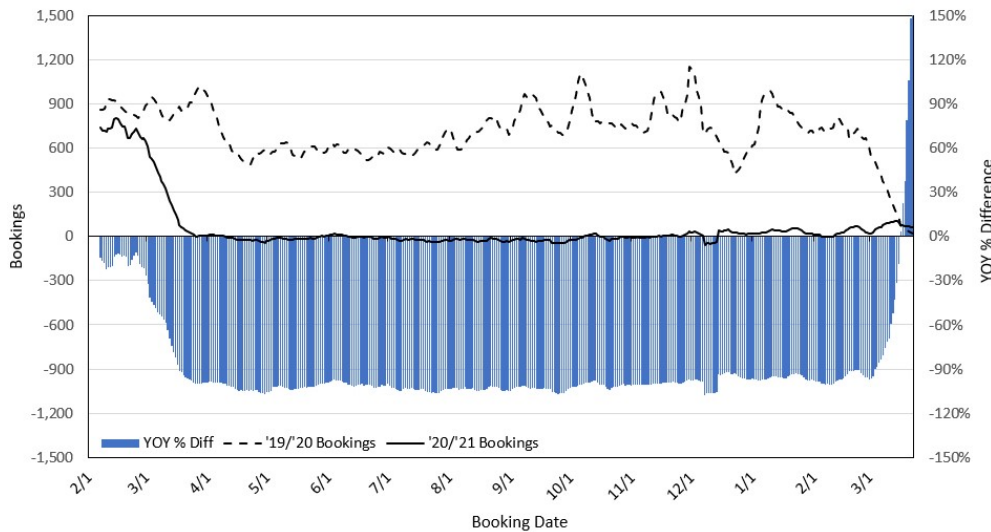
**Travel Agency Bookings to Hawaii for Future Arrivals*
Based on a 7-day Moving Average as of March 23, 2021
Japan**



*Future Arrivals refers to all arrivals that are 'future' relative to the referenced booking date.
Source: Global Agency Pro

Update: Mar 23, 2021

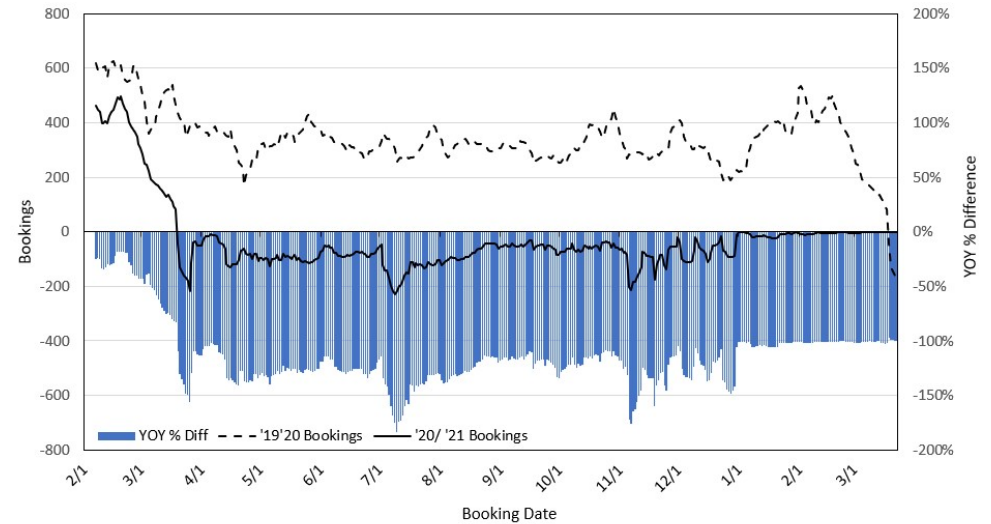
**Travel Agency Bookings to Hawaii for Future Arrivals*
Based on a 7-day Moving Average as of March 23, 2021
Canada**



*Future Arrivals refers to all arrivals that are 'future' relative to the referenced booking date.
Source: Global Agency Pro

Update: Mar 23, 2021

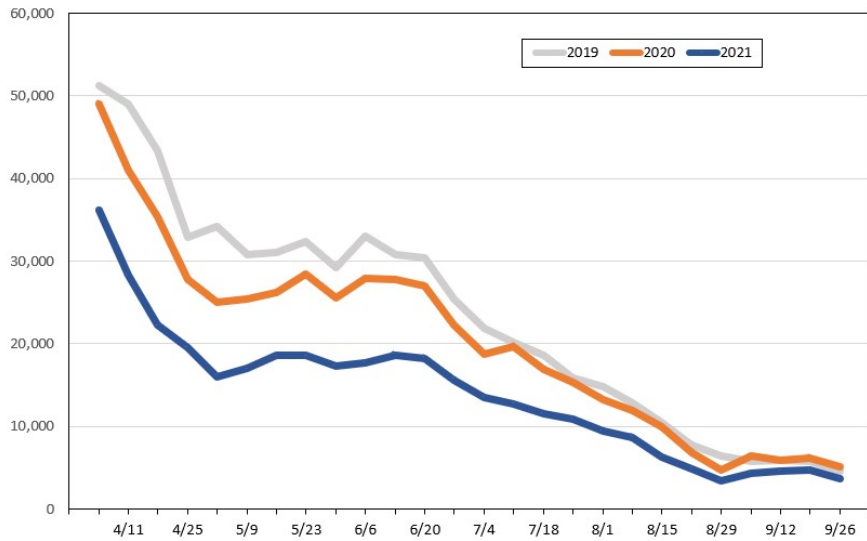
**Travel Agency Bookings to Hawaii for Future Arrivals*
Based on a 7-day Moving Average as of March 23, 2021
Australia**



*Future Arrivals refers to all arrivals that are 'future' relative to the referenced booking date.
Source: Global Agency Pro

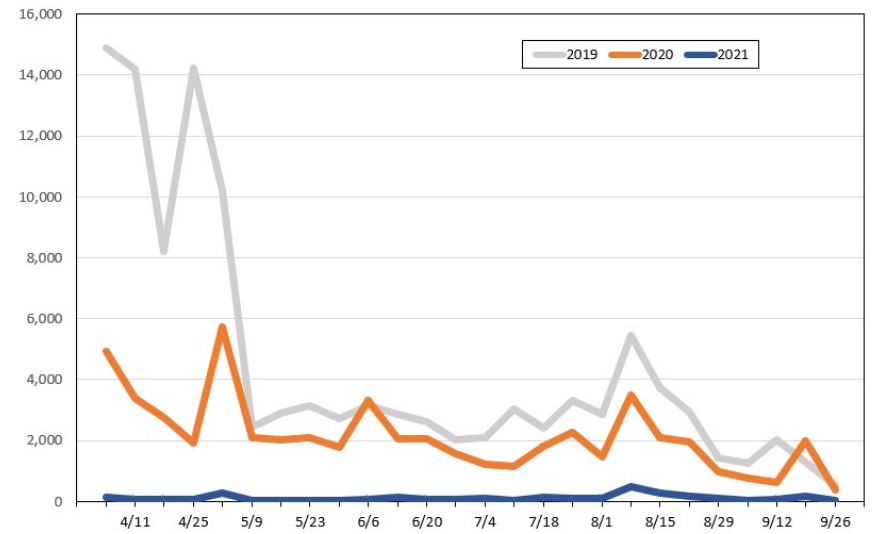
Update: Mar 23, 2021

Travel Agency Weekly Bookings for Future Travel to Hawai'i as of March 23, 2021
U.S.



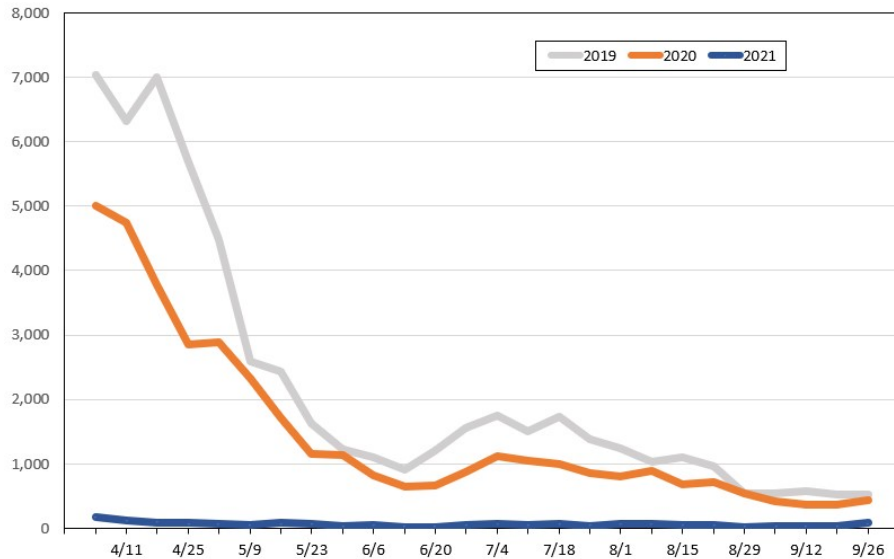
Source: Global Agency Pro, as of March 23, 2021

Travel Agency Weekly Bookings for Future Travel to Hawai'i as of March 23, 2021
Japan



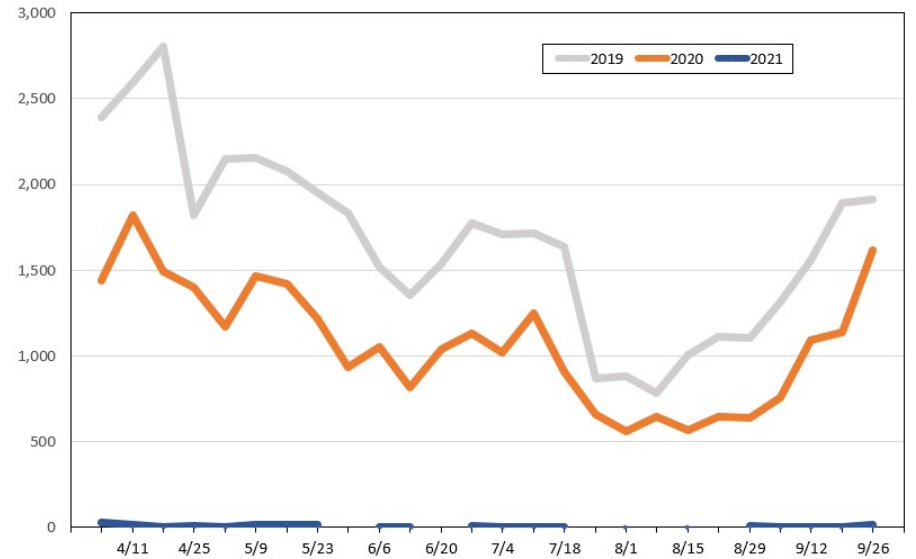
Source: Global Agency Pro, as of March 23, 2021

Travel Agency Weekly Bookings for Future Travel to Hawai'i as of March 23, 2021
Canada



Source: Global Agency Pro, as of March 23, 2021

Travel Agency Weekly Bookings for Future Travel to Hawai'i as of March 23, 2021
Australia



Source: Global Agency Pro, as of March 23, 2021