

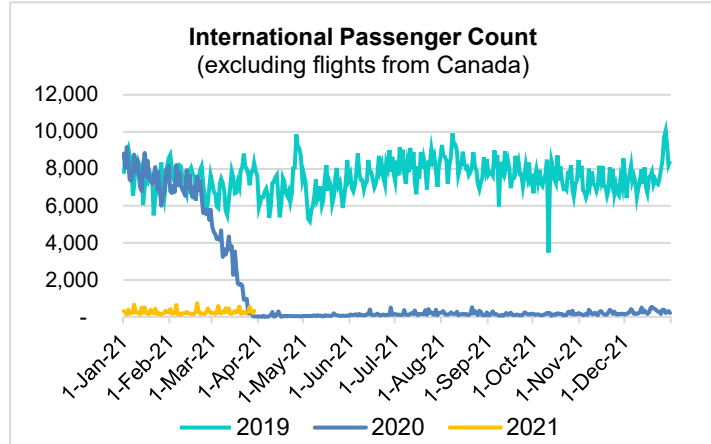
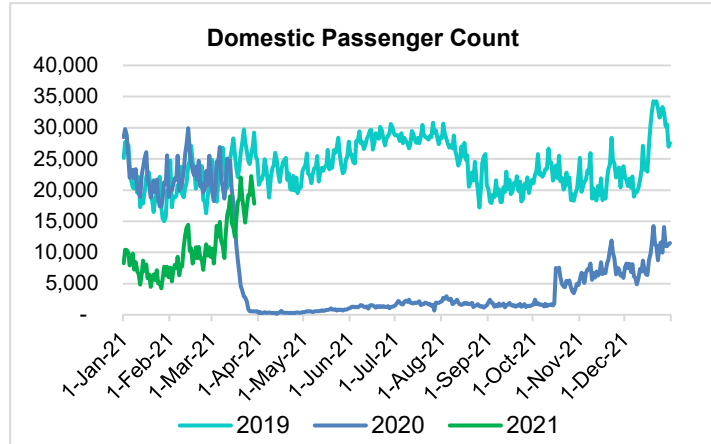
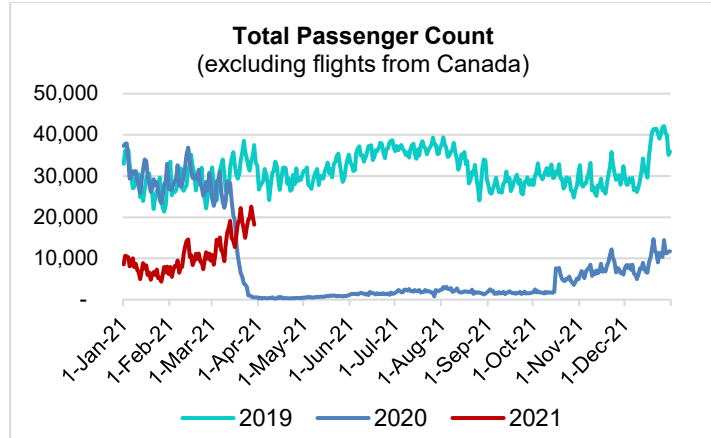
HTA COVID-19 UPDATE

(Issued: 3/30/21 @ 4:30pm)

Reason for Trip by Arrival Airport - Transpacific Screened Passengers as of 03/29/21	Honolulu (HNL)	Kahului (OGG)	Kona (KOA)	Hilo (ITO)	Lihue (LIH)	Grand Total
Airline Crew	462	233	108	0	19	822
Connecting Flight (Transit)	573	64	6	0	1	644
Corporate Meeting	9	2	1	0	1	13
Essential Worker	135	35	11	0	2	183
Honeymoon	28	16	8	0	0	52
Incentive Trip	2	0	0	0	0	2
Intended Resident	100	25	22	0	4	151
Military or Federal Government	113	0	7	0	2	122
Other	60	30	10	0	1	101
Other Business	78	39	21	0	2	140
Pleasure/Vacation	5,834	5,210	1,980	0	138	13,162
Returning Resident	1,608	372	205	0	46	2,231
Sports Event	0	1	0	0	0	1
To Attend School	67	0	6	0	0	73
To Get Married	10	3	2	0	0	15
Visiting Friends or Relatives	1,187	338	231	0	23	1,779
Grand Total	10,266	6,368	2,618	0	239	19,491

Source: Safe Travels program developed by the State of Hawaii Office of Enterprise Technology Services

Note: The data is preliminary and subject to change



Daily Passenger Count Table

03/29/2021	Domestic	International	Total
Oahu	9,356	339	9,695
Maui	5,767		5,767
Island of Hawaii	2,487		2,487
Kauai	219		219
State	17,829	339	18,168

Novel Coronavirus in Hawaii

COVID-19 Positive Cases

Cumulative totals as of 12:00pm on March 30, 2021

Total Confirmed Cases	29,581* (71 new)
Hawaii	2,463
Kauai	190
Lanai	110
Maui	2,826†
Molokai	34
Oahu	23,021
Out of State	937
Pending	0
Required Hospitalization	1,979‡
Hawaii Deaths	462
Cases in the past 14 days	1,175*

Footnotes for COVID-19 Cases

*As a result of updated information, one case on Maui was removed from the counts.

**Using cases reported in the past 14 days provides a rough approximation of the number of cases currently meeting criteria for isolation. This proxy number for "active cases" resolves classification issues for cases unable to be reached or who are out of jurisdiction, for whom precise release from isolation date may not be possible to determine. It is also not influenced by lags in data entry. (This total does not include Hawaii residents diagnosed outside of Hawaii)

†One case is a Lanai resident whose exposure is on Maui Island and who will be remaining on Maui Island for the interim.

‡Includes Hawaii residents hospitalized out of state.

§Includes cases that meet isolation release criteria (Isolation should be maintained until at least 24 hours after resolution of fever and myalgia without the use of antipyretics OR at least 10 days have passed since symptom onset, whichever is longer). (The cases that have died and one case that has left the jurisdiction have been removed from these counts). Positive cases include confirmed cases, and Hawaii residents and non-residents; data are preliminary and subject to change. Note that CDC provides case counts according to states of residence.

Month-to-Date and Year-to-Date Daily Passenger Volume

2021 Volume versus 2020 Volume
Through March 29, 2021

March 2021 (Month-to-Date through March 29)

	2021	2020	Volume Change	Percent Change
Domestic	449,297	411,698	+37,599	+9.1%
Japan	1,791	55,343	-53,552	-96.8%
Total	457,493	493,496	-36,003	-7.3%

2021 (Year-to-Date through March 29)

	2021	2020	Volume Change	Percent Change
Domestic	933,370	1,769,133	-835,763	-47.2%
Japan	5,641	358,347	-352,706	-98.4%
Total	956,565	2,289,034	-1,332,469	-58.2%

Source: HVCB analysis based on data from DBEDT
Note: Passenger volume figures include both visitors and residents. 2020 includes one additional day due to Leap Year (February 29th, 2020).

Domestic by Island Month-to-Date and Year-to-Date Daily Passenger Volume

2021 Volume versus 2020 Volume
Through March 29, 2021

March 2021 (Month-to-Date through March 29)

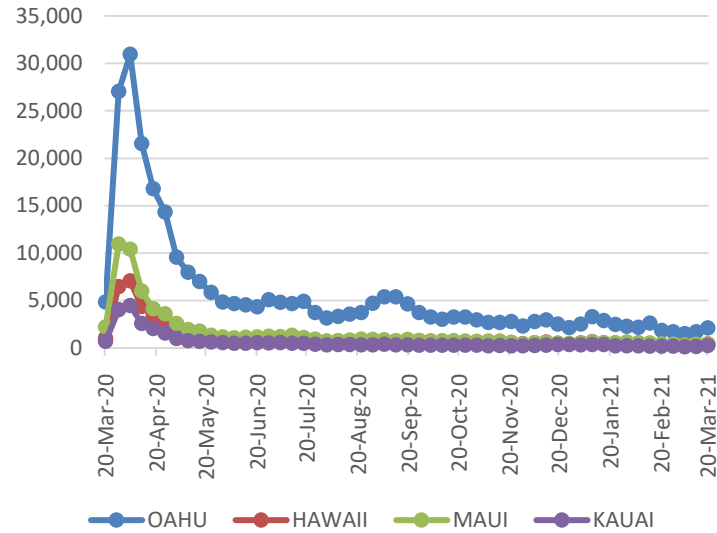
	2019	2020	2021	2019 vs 2021 Volume Change	2019 vs 2021 Percent Change	2020 vs 2021 Volume Change	2020 vs 2021 Percent Change
Honolulu	372,601	226,335	232,837	-139,764	-37.5%	+6,502	+2.9%
Maui County	177,262	99,519	145,619	-31,643	-17.9%	+46,100	+46.3%
Island of Hawai'i	89,484	50,475	65,550	-23,934	-26.7%	+15,075	+29.9%
Kaua'i	63,870	35,369	5,291	-58,579	-91.7%	-30,078	-85.0%
Total	703,217	411,698	449,297	-253,920	-36.1%	+37,599	+9.1%

2021 (Year-to-Date through March 29)

	2019	2020	2021	2019 vs 2021 Volume Change	2019 vs 2021 Percent Change	2020 vs 2021 Volume Change	2020 vs 2021 Percent Change
Honolulu	1,043,152	963,329	494,506	-548,646	-52.6%	-468,823	-48.7%
Maui County	473,883	440,684	293,623	-180,260	-38.0%	-147,061	-33.4%
Island of Hawai'i	242,081	216,006	135,243	-106,838	-44.1%	-80,763	-37.4%
Kaua'i	171,757	149,114	9,998	-161,759	-94.2%	-139,116	-93.3%
Total	1,930,873	1,769,133	933,370	-997,503	-51.7%	-835,763	-47.2%

Source: HVCB analysis based on data from DBEDT
Note: Passenger volume figures include both visitors and residents. Total includes other international passengers. 2020 includes one additional day due to Leap Year (February 29th, 2020).

2021 Initial Weekly Unemployment Claims by Island



Weekly Unemployment Initial Claims: March 20, 2021

State of Hawaii	3,305
C&C of Oahu	2,097
Honolulu	802
Kaneohe	217
Waipahu	1078
Hawaii County	423
Hilo	301
Kona	122
Maui County	408
Wailuku	401
Molokai	7
Kauai County	248
Agent (filed in Hawaii against another state)	129

News Highlights

March 30, 2021

Honolulu Star Advertiser: [Turtle Bay Resort to reopen July 1 as rise in visitors sparks hope for tourism industry](#)

Hawaii News Now: [\\$1,000 a day to rent a car? Low supply, surging demand are pushing up prices in Hawaii](#)

Hawaii Public Radio: [Vaccination Passport System in the Works, Lt. Gov. Green Says](#)

Big Island Now: [COVID Spike Continues as Hawaii Registers Triple-Digit Cases Again](#)

The Garden Island: [Most Kauai residents eligible for COVID-19 vaccines](#)

Hawaii Tribune-Herald: [E. Hawaii a 'hot spot' for new virus cases](#)

West Hawaii Today: [Nearly 15% of Big Islanders fully vaccinated](#)

PR Newswire: [UberMedia Rebrands to 'UM' to Deliver Data Intelligence to Every Business](#)

Jeffsetter Travel: [Hawaii Pre-Clear Expands to Six Airlines](#)

Helpful Resources

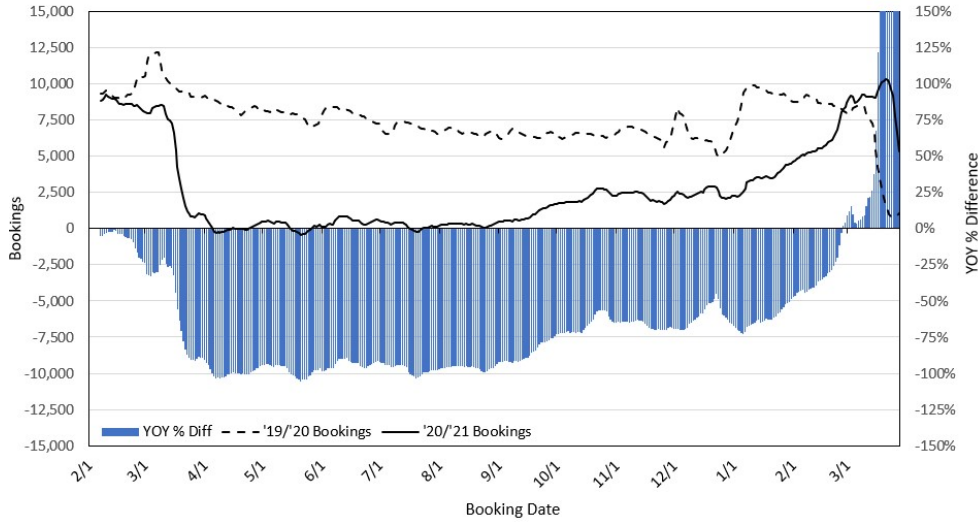
Department of Health
<https://hawaiiicovid19.com/>

Hawaii Tourism Authority
<https://www.hawaiitourismauthority.org/covid-19-updates/>

Dept. of Business, Economic Development & Tourism
<https://dbedt.hawaii.gov/economic/covid19/>

Department of Transportation
<https://hidot.hawaii.gov/coronavirus/>

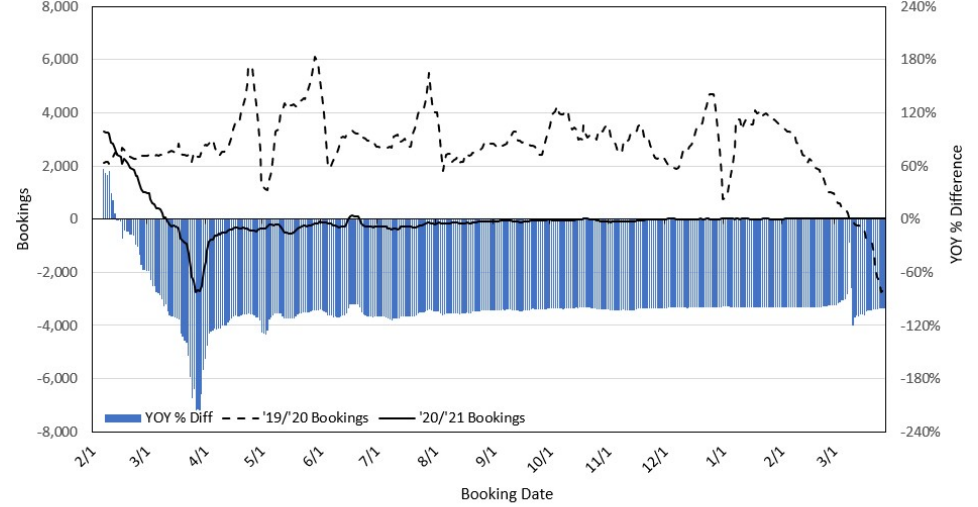
**Travel Agency Bookings to Hawaii for Future Arrivals*
Based on a 7-day Moving Average as of March 28, 2021
U.S.**



*Future Arrivals refers to all arrivals that are 'future' relative to the referenced booking date.
Source: Global Agency Pro

Update: Mar 28, 2021

**Travel Agency Bookings to Hawaii for Future Arrivals*
Based on a 7-day Moving Average as of March 28, 2021
Japan**



*Future Arrivals refers to all arrivals that are 'future' relative to the referenced booking date.
Source: Global Agency Pro

Update: Mar 28, 2021

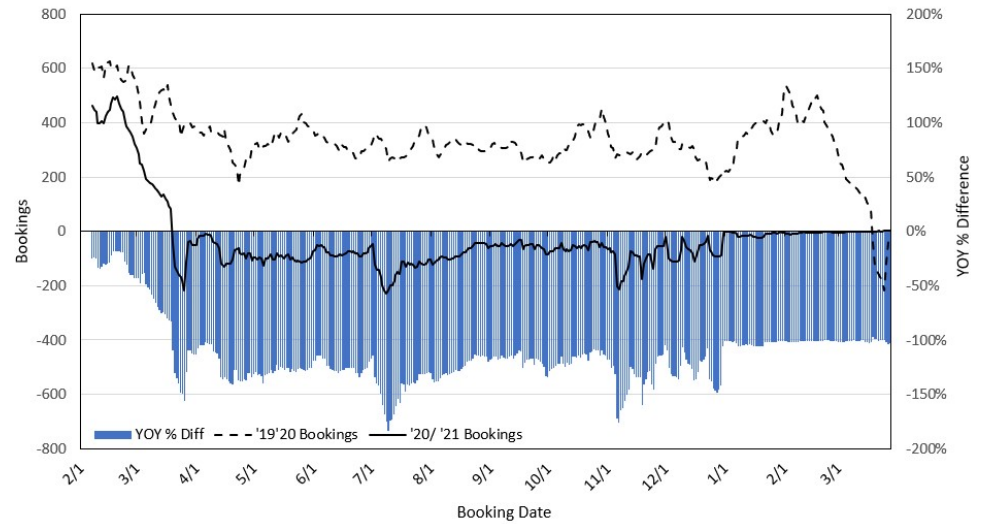
**Travel Agency Bookings to Hawaii for Future Arrivals*
Based on a 7-day Moving Average as of March 28, 2021
Canada**



*Future Arrivals refers to all arrivals that are 'future' relative to the referenced booking date.
Source: Global Agency Pro

Update: Mar 28, 2021

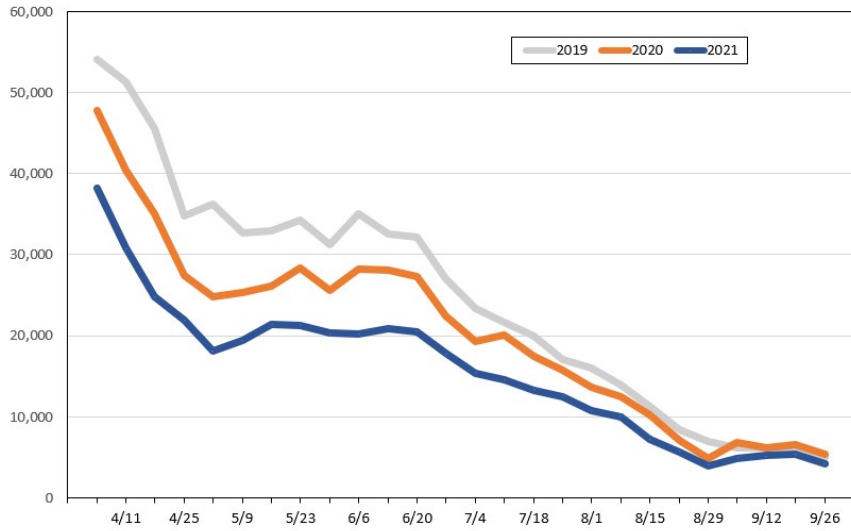
**Travel Agency Bookings to Hawaii for Future Arrivals*
Based on a 7-day Moving Average as of March 28, 2021
Australia**



*Future Arrivals refers to all arrivals that are 'future' relative to the referenced booking date.
Source: Global Agency Pro

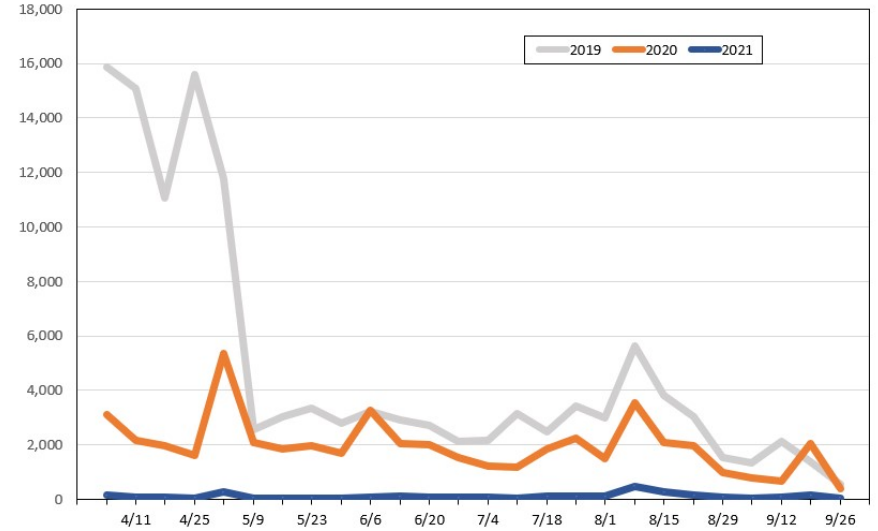
Update: Mar 28, 2021

Travel Agency Weekly Bookings for Future Travel to Hawai'i as of March 28, 2021
U.S.



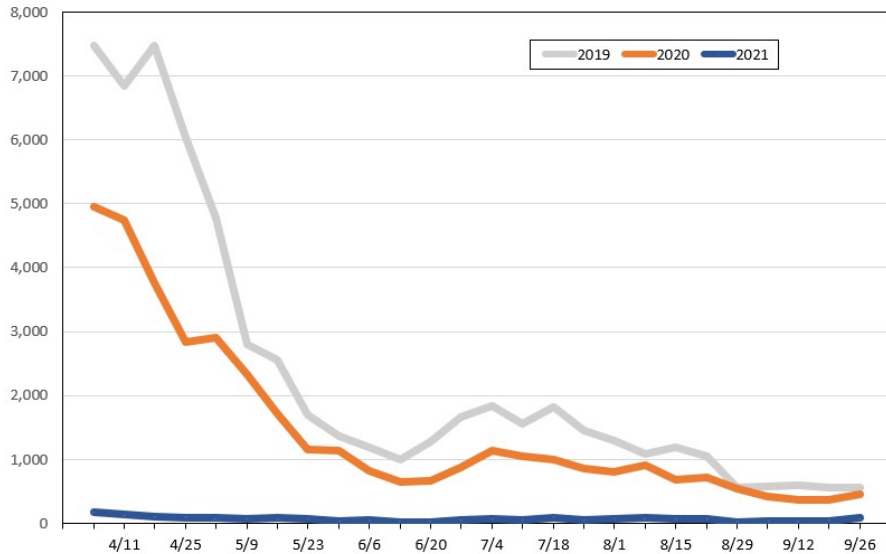
Source: Global Agency Pro, as of March 28, 2021

Travel Agency Weekly Bookings for Future Travel to Hawai'i as of March 28, 2021
Japan



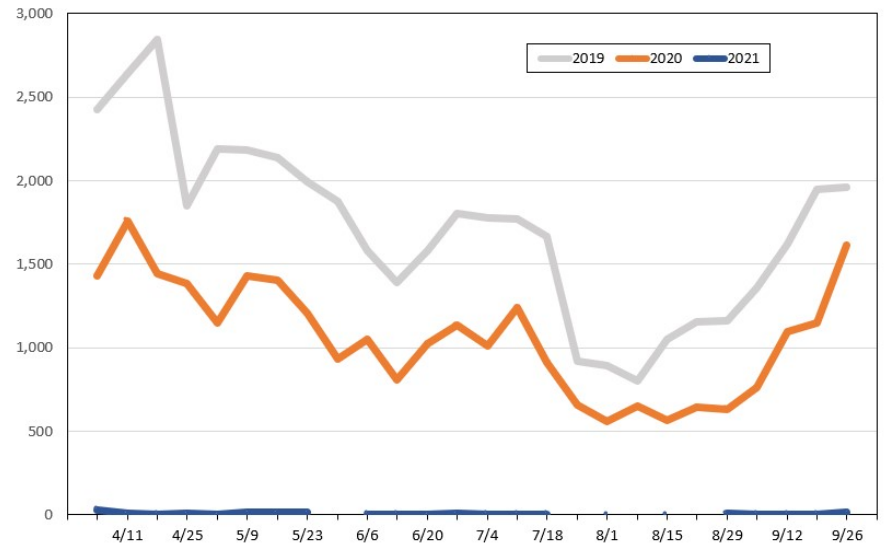
Source: Global Agency Pro, as of March 28, 2021

Travel Agency Weekly Bookings for Future Travel to Hawai'i as of March 28, 2021
Canada



Source: Global Agency Pro, as of March 28, 2021

Travel Agency Weekly Bookings for Future Travel to Hawai'i as of March 28, 2021
Australia



Source: Global Agency Pro, as of March 28, 2021